

# Andrew White

Petroleum Geologist

Scale 1:240 (5"=100') Imperial  
Measured Depth Log

Well Name: Luebbers #1  
Location: 14-18S-38W  
License Number: API: 15-203-20241  
Spud Date: 11/04/13  
Surface Coordinates: 2090' FNL, 1010' FWL  
Region: Wildcat  
Drilling Completed: 11/11/13

Bottom Hole  
Coordinates:  
Ground Elevation (ft): 3372  
Logged Interval (ft): 2500 To: RTD  
Formation: Mississippi  
Type of Drilling Fluid: Chemical  
K.B. Elevation (ft): 3383  
Total Depth (ft): 5165

Printed by WellSight Log Viewer from WellSight Systems 1-800-447-1534 www.WellSight.com

## OPERATOR

Company: White Exploration, Inc.  
Address: 1635 N. Waterfront Pkwy, Suite 100  
Wichita, KS 67206

## GEOLOGIST

Name: Andrew White/ Dave Goldak  
Company:  
Address:

## Remarks

The Luebbers #1 contained the Morrow Sand interval and was structurally high to the White Exploration Oldham #2 but low to the Falcon Oldham #2. After evaluation of the samples and logs it was determined to P&A the Luebbers #1.

## DSTs

No DSTs taken

## General Info

**Drilling Contractor:** Murfin Rig 22

**Logs:** Nabors

**Compensated Density Nuutron, Dual Induction, Micro, and Sonic**

**Drilling Mud:** Mudco/Service Mud, Inc.

**Gas Detector:** Earthtech

**Surveys:** 353'-1, 1012'-1, 1767'-.5, 2269'-1, 3020'-1, 3740'-.25, 4023'-.75, 4600'-.75, 5165'-2

Bit	MFG	Type	Depth Out	Footage	Hours on
12 1/4	HTC	GTG-1	353	353	4
7 7/8	HTC	DP506F	4600	4247	82 3/4
7 7/8	HTC	GX22s	5165	565	42 1/4

## Daily Status

11/04/13 - Spud @ 6:00 p.m.; Set 8-5/8" Csg at 353', 240 Sacks with 3% CC and 2% gel

11/05/13 - 353' Drilling

11/06/13 - 1860' Drilling

11/07/13 - 3330' Drilling, displace @ 3400'

11/08/13 - 4025' Drilling, 4600' bit trip

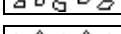
11/09/13 - 4600' Bit Trip

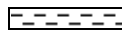



11/10/13 - 4860' Drilling





11/11/13 - 5165' CFS, condition well for log

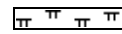
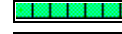
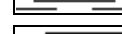
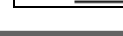
Luebbers # 1 2090' FNL, 1010' FWL 14-18S-38W KB: 3383						Falcon Oldham # 2 550' FSL, 3190' FEL 15-18S-38W KB: 3399 Structural Relationship						White Oldham #1 955' FNL, 1845' FWL 22-18S-38W KB: 3405 Structural Relationship					
Formation	Sample	Sub-Sea	Log	Sub-Sea	Log	Log	Sub-Sea	Sample	Log	Log	Sub-Sea	Sample	Log				
Heebner	3994	-611	3992	-609		3997	-598	-13	-11								
Lansing	4070	-687	4070	-687		4090	-691	4	4		4090	-685	-2				
Stark	4380	-997	4348	-965		4396	-997	0	32		4398	-993	-4				
BKC	4454	-1071	4448	-1065		4470	-1071	0	6		4472	-1067	-4				
Marmaton	4504	-1121	4502	-1119		4510	-1111	-10	-8		4519	-1114	-7				
Cherokee	4644	-1261	4648	-1265		4643	-1244	-17	-21		4645	-1240	-21				
Morrow	4880	-1497	4884	-1501		4874	-1475	-22	-26		4891	-1486	-11				
Morrow Sand	5006	-1623	5010	-1627		5007	-1608	-15	-19		5048	-1643	20				
Mississippi	5104	-1721	5108	-1723		5145	-1746	25	23		5107	-1702	-19				

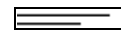



## ROCK TYPES

 Anhy  
 Bent  
 Brec  
 Cht

 Clyst  
 Coal  
 Congl  
 Dol

 Gyp  
 Igne  
 Lmst  
 Meta

 Mrlst  
 Salt  
 Shale  
 Shcol

 Shgy  
 Sltst  
 Ss  
 Till

### ACCESSORIES

- MINERAL**
- Anhy
  - Arggrn
  - Arg
  - Bent
  - Bit
  - Breclfrag
  - Calc
  - Carb
  - Chtdk
  - Chtlt
  - Dol
  - Feldspar
  - Ferrpel
  - Ferr
  - Glau

- Gyp
- Hvymin
- Kaol
- Marl
- Minxl
- Nodule
- Phos
- Pyr
- Salt
- Sandy
- Silt
- Sil
- Sulphur
- Tuff

- FOSSIL**
- Algae
  - Amph
  - Belm
  - Bioclst
  - Brach
  - Bryozoa
  - Cephal
  - Coral
  - Crin
  - Echin
  - Fish
  - Foram
  - Fossil
  - Gastro
  - Oolite

- Ostra
- Pelec
- Pellet
- Pisolite
- Plant
- Strom

- STRINGER**
- Anhy
  - Arg
  - Bent
  - Coal
  - Dol
  - Gyp
  - Ls
  - Mrst

- Siltstrg
- Ssstrg

- TEXTURE**
- Boundst
  - Chalky
  - Cryxln
  - Earthy
  - Finexln
  - Grainst
  - Lithogr
  - Microxln
  - Mudst
  - Packst
  - Wackest

### OTHER SYMBOLS

- POROSITY**
- Earthy
  - Fenest
  - Fracture
  - Inter
  - Moldic
  - Organic
  - Pinpoint

- Vuggy
- SORTING**
- Well
  - Moderate
  - Poor

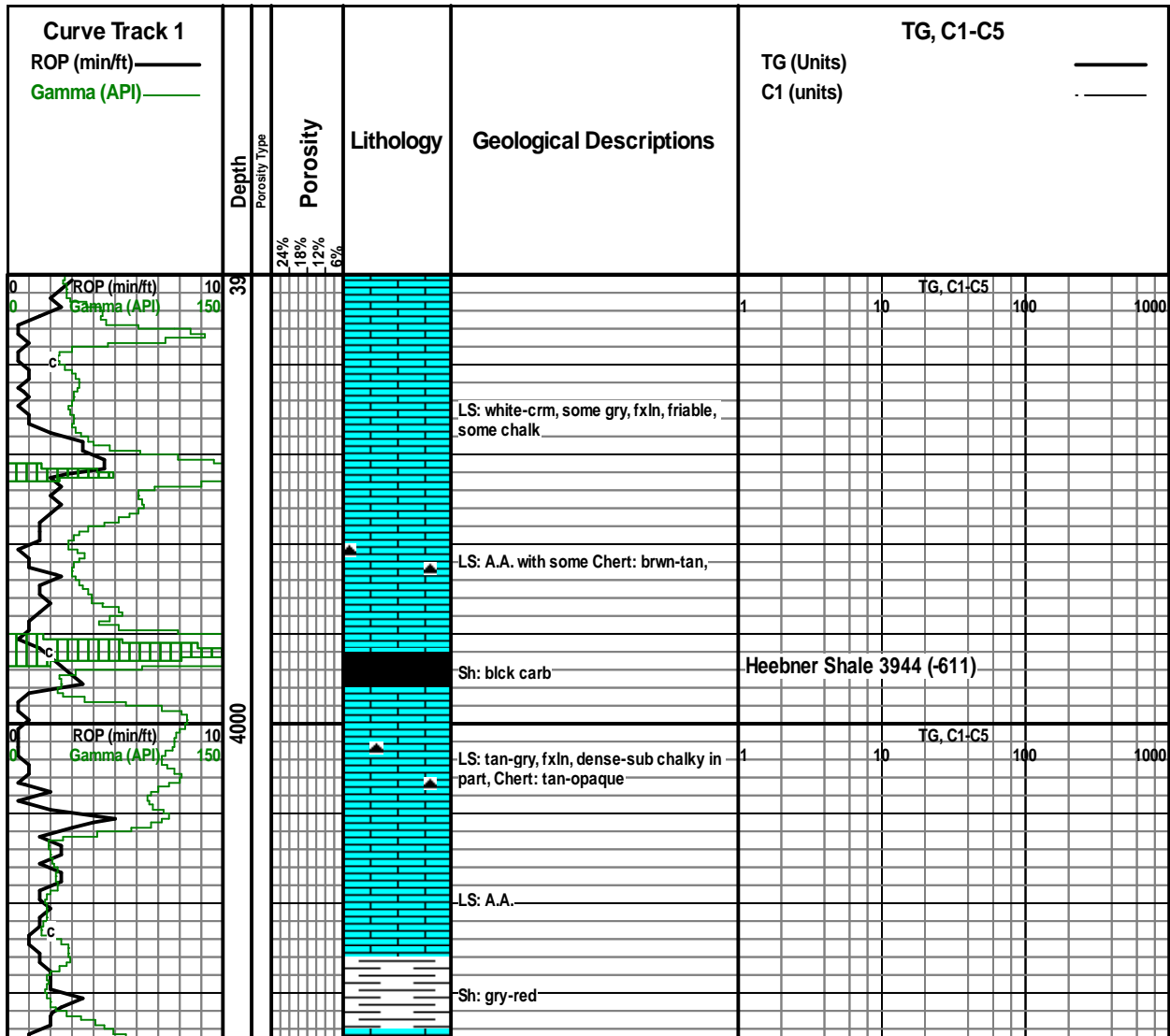
- ROUNDING**
- Rounded
  - Subrnd
  - Subang
  - Angular

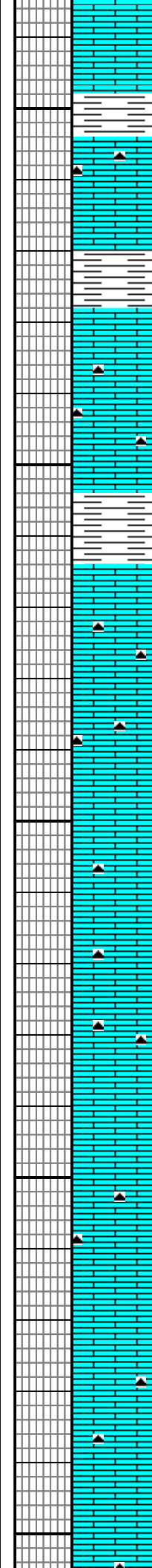
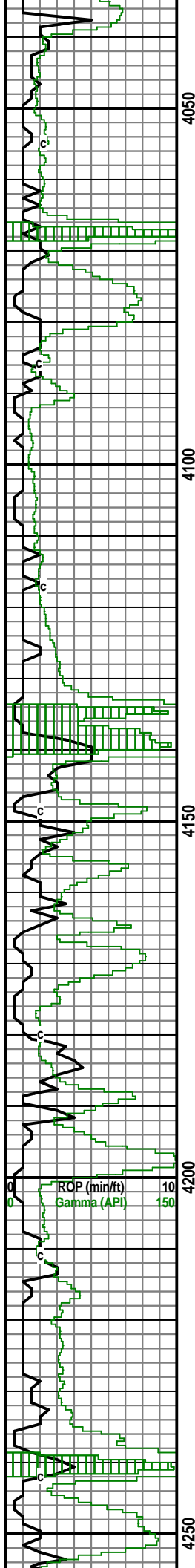
- Spotted
- Ques
- Dead

- EVENT**
- Rft
  - Sidewall

- OIL SHOW**
- Even

- INTERVAL**
- Core
  - Dst





LS: white-tan, mostly chalk, some dense fos, with slight vug pr

Sh: A.A.

LS: white-crm, mcrxln, dense, some chalk, Chert: opaque-tan.

Sh: gry-black, some red

Lansing 4070 (-687)

LS: white-crm, some chalk, dense, Chert: tan-opaque

LS: A.A. Chert: A.A.

Sh: gry

LS and Chert: A.A.

LS: white, dense, some chalk, Chert: A.A. with some trans.

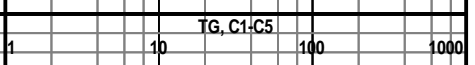
LS: white-crm-tan, mcrxln-fxln, some chalk, mostly dense with some friable, part fos, Chert: tan-opaque, some trans

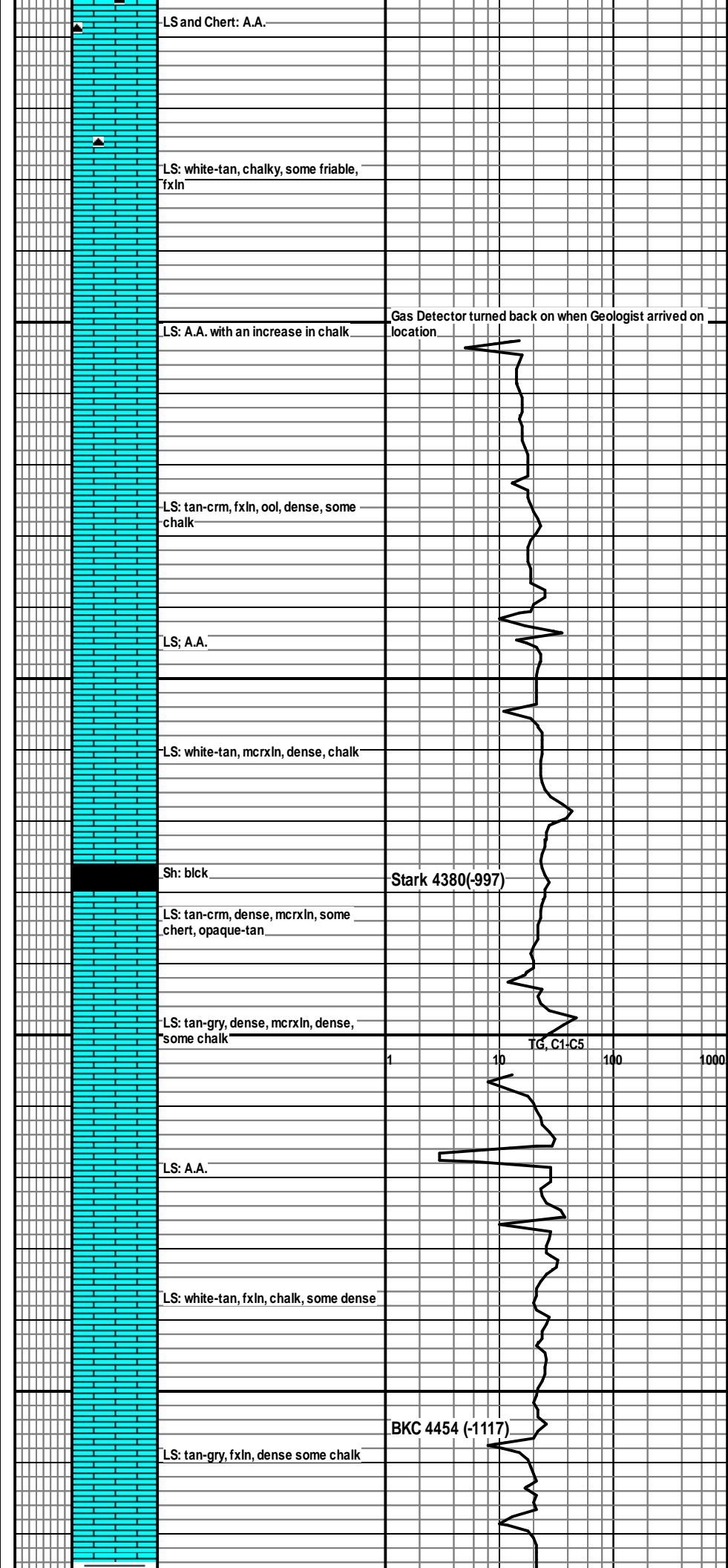
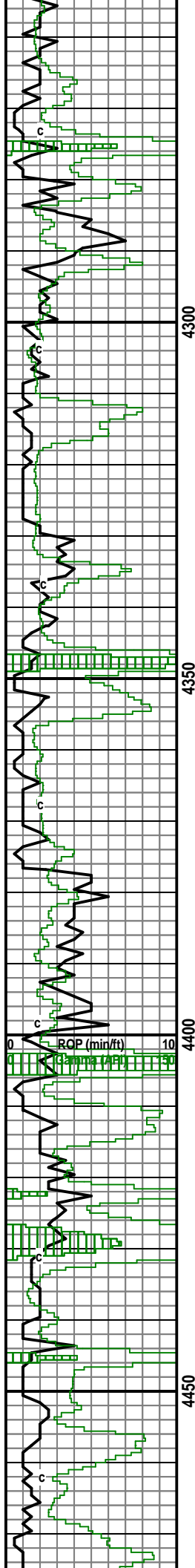
LS: white-tan, fxln, fos, dense, sub chalky, Chert: crm-white

LS: crm-tan, fxln-mxln, some chalk, slight vug por, Chert: brwn-tan

LS: A.A. with some white-tan ool

LS: crm-tan, some chalky, dense, with Chert: gry-tan





LS and Chert: A.A.

LS: white-tan, chalky, some friable, fxln

LS: A.A. with an increase in chalk

Gas Detector turned back on when Geologist arrived on location

LS: tan-crm, fxln, ool, dense, some chalk

LS; A.A.

LS: white-tan, mcrln, dense, chalk

Sh: blk

Stark 4380(-997)

LS: tan-crm, dense, mcrln, some chert, opaque-tan

LS: tan-gry, dense, mcrln, dense, some chalk

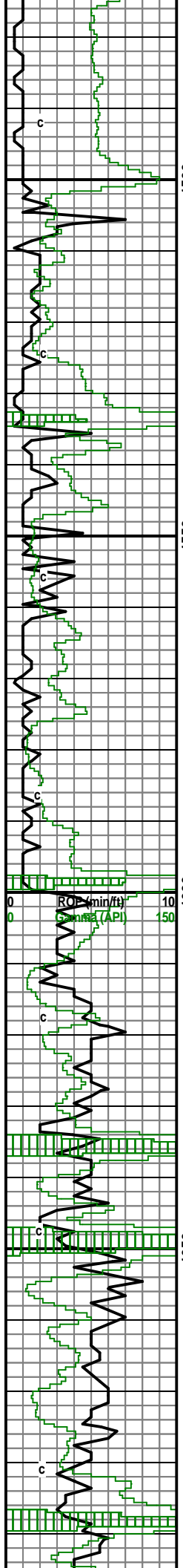
TG, C1-C5  
1 10 100 1000

LS: A.A.

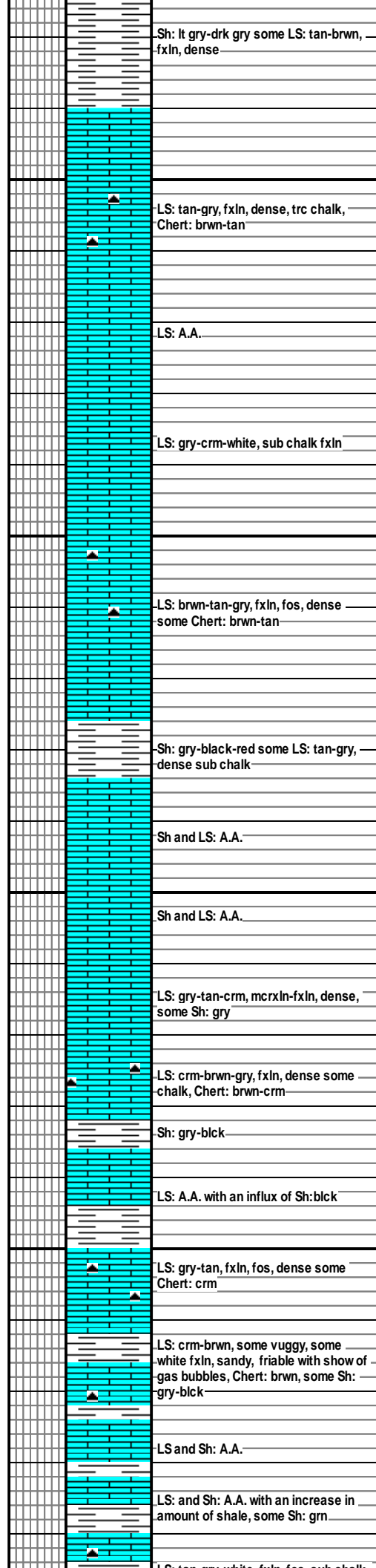
LS: white-tan, fxln, chalk, some dense

BKC 4454 (-1117)

LS: tan-gry, fxln, dense some chalk



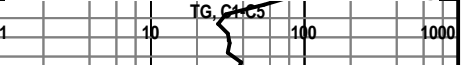
4500  
4550  
4600  
4650

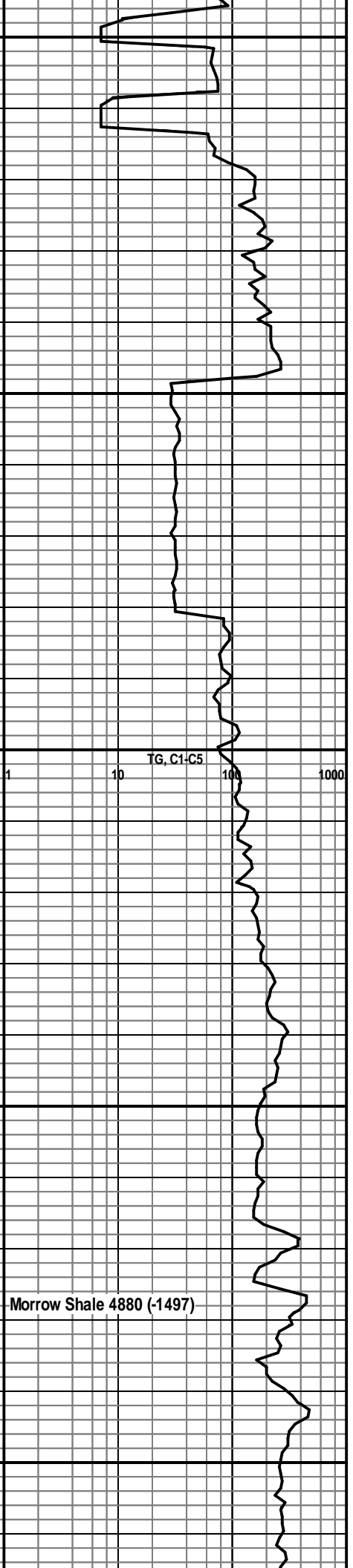
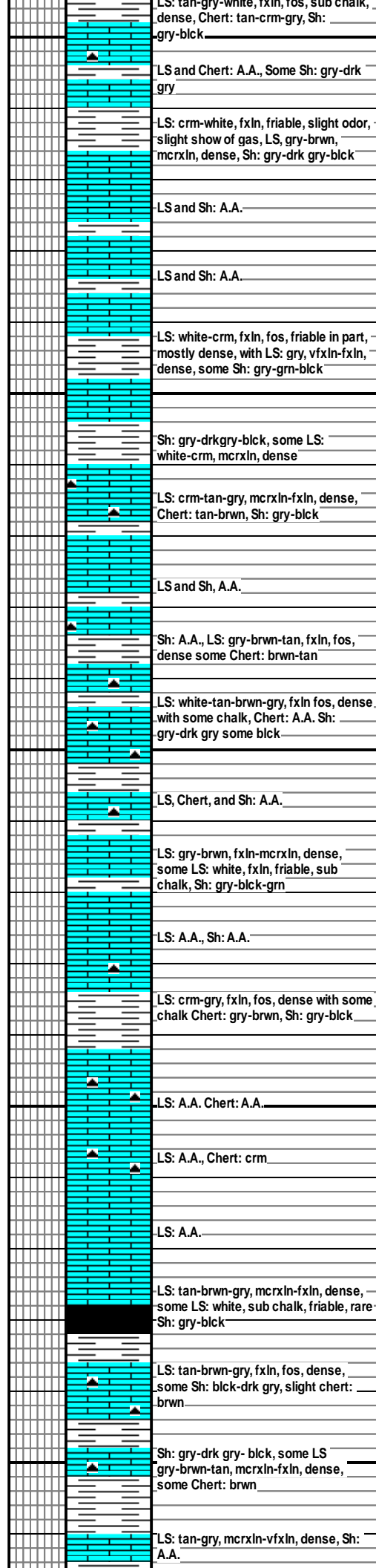
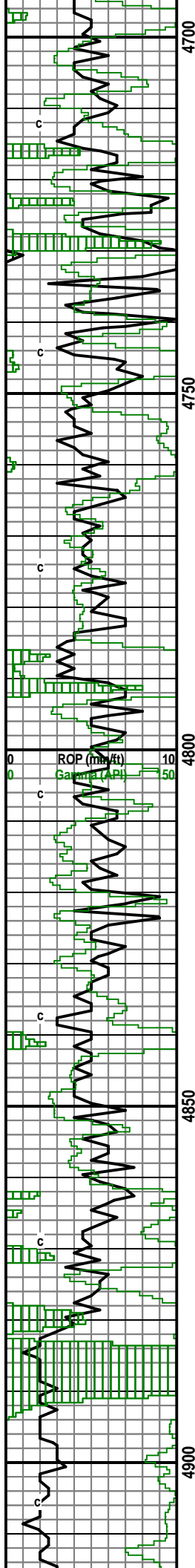


Marmaton 4504 (-1237)

Bit Trip 4600, PDC out Button in, strap .55 long

Cherokee 4644 (-1261)





Morrow Shale 4880 (-1497)

