

# T11S, R22W, 6th P.M.

McELVAIN ENERGY, INC.

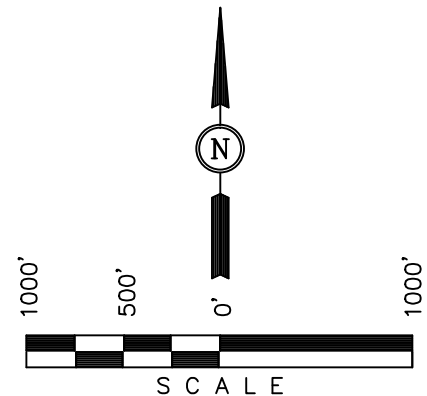
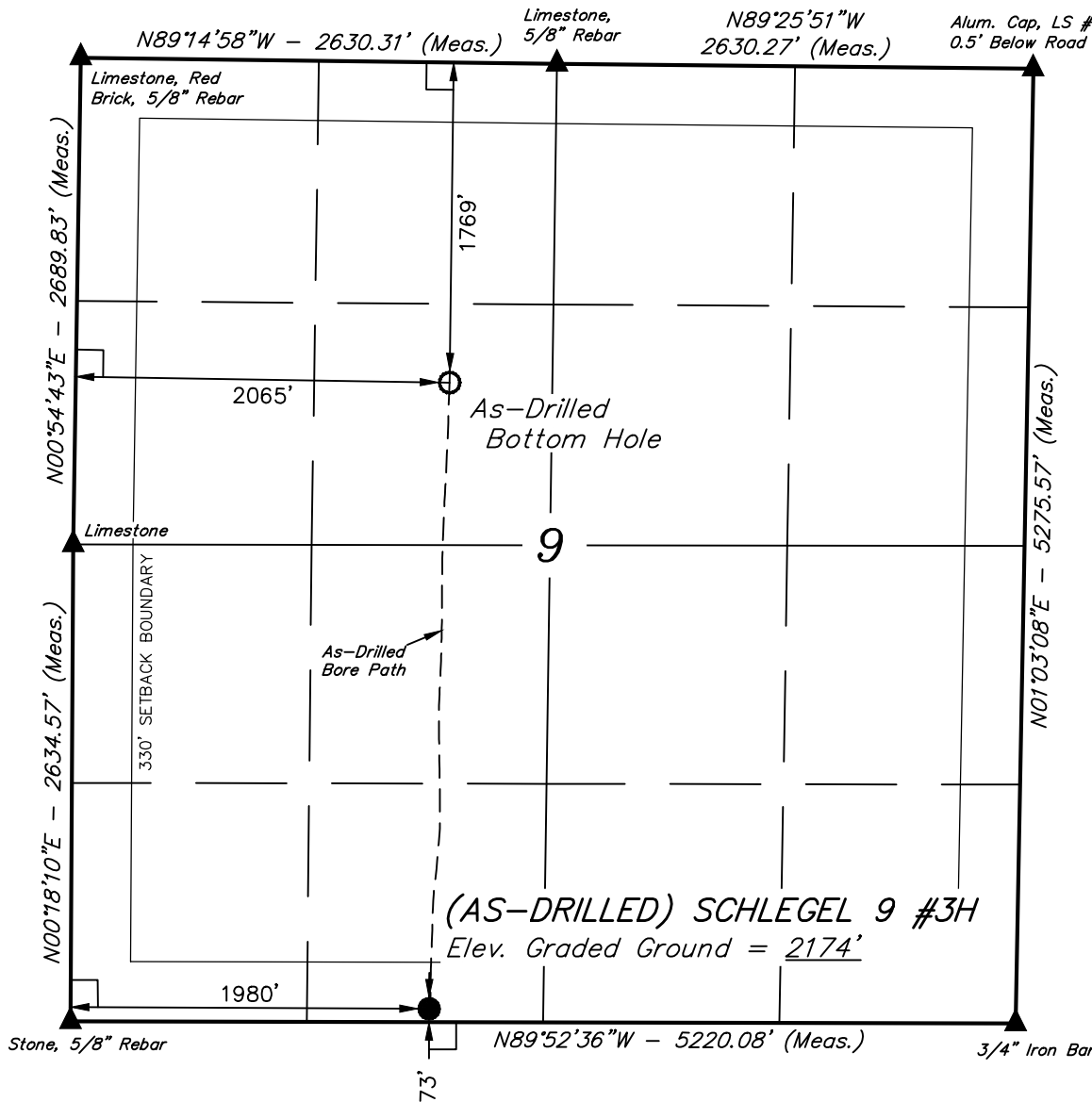
Well location, (AS-DRILLED) SCHLEGEL 9 #3H, located as shown in the SE 1/4 SW 1/4 of Section 9, T11S, R22W, 6th P.M., Trego County, Kansas.

### BASIS OF ELEVATION

USGS COOPERATIVE BASE NETWORK CONTROL STATION, DESIGNATION "X301". NGS DATA SHEET LISTS THE NAVD 88 ELEVATION AS BEING 2397.08 FEET.

### BASIS OF BEARINGS

BASIS OF BEARINGS IS A G.P.S. OBSERVATION.



### CERTIFICATE

THIS IS TO CERTIFY THAT THE ABOVE PLAT WAS PREPARED FROM FIELD NOTES OF ACTUAL SURVEYS MADE BY ME OR UNDER MY SUPERVISION AND THAT THE SAME ARE TRUE AND CORRECT TO THE BEST OF MY KNOWLEDGE AND BELIEF.

*Robert S. Little*  
 REGISTERED LAND SURVEYOR  
 REGISTRATION NO. 1451  
 STATE OF KANSAS 10-01-13

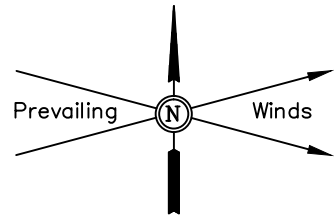
### LEGEND:

- └─┘ = 90° SYMBOL
- = PROPOSED WELL HEAD.
- ▲ = SECTION CORNERS LOCATED.

| NAD 83 (AS-DRILLED BOTTOM HOLE)      | NAD 83 (AS-DRILLED SURFACE LOCATION) |
|--------------------------------------|--------------------------------------|
| LATITUDE = 39°06'45.57" (39.112658)  | LATITUDE = 39°06'11.37" (39.103158)  |
| LONGITUDE = 99°46'12.16" (99.770044) | LONGITUDE = 99°46'13.59" (99.770442) |
| NAD 27 (AS-DRILLED BOTTOM HOLE)      | NAD 27 (AS-DRILLED SURFACE LOCATION) |
| LATITUDE = 39°06'45.54" (39.112650)  | LATITUDE = 39°06'11.35" (39.103153)  |
| LONGITUDE = 99°46'10.73" (99.769647) | LONGITUDE = 99°46'12.16" (99.770044) |

**UINTAH ENGINEERING & LAND SURVEYING**  
 85 SOUTH 200 EAST - VERNAL, UTAH 84078  
 (435) 789-1017

|                         |                               |                         |
|-------------------------|-------------------------------|-------------------------|
| SCALE<br>1" = 1000'     | DATE SURVEYED:<br>09-27-13    | DATE DRAWN:<br>10-01-13 |
| PARTY<br>C.B. J.P. S.S. | REFERENCES<br>G.L.O. PLAT     |                         |
| WEATHER<br>COOL         | FILE<br>McELVAIN ENERGY, INC. |                         |



**McELVAIN ENERGY, INC.**

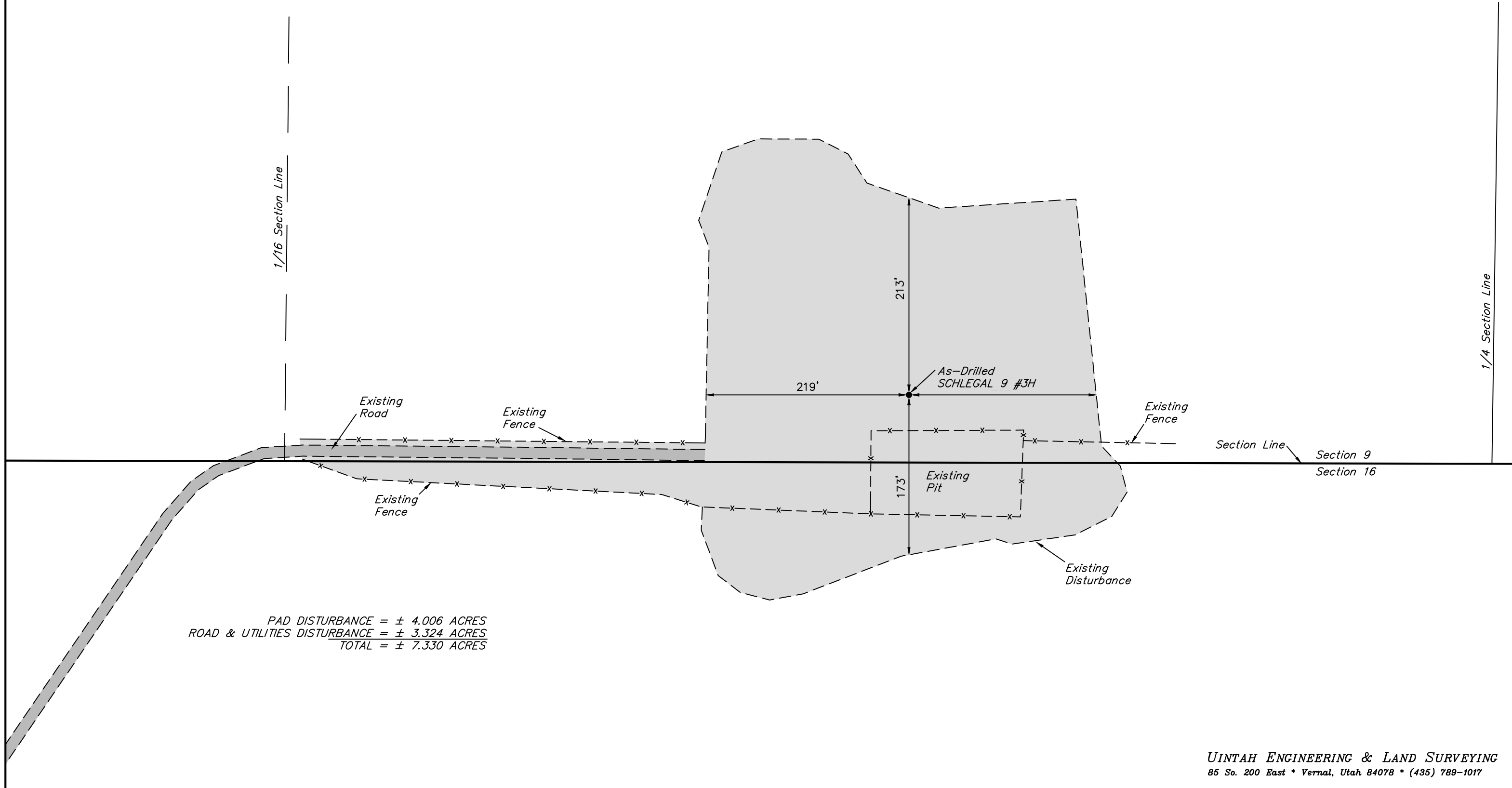
AS-BUILT SITE PLAN FOR

SCHLEGEL 9 #3H

SECTION 9, T11S, R22W, 6th P.M.

1769' FNL 2065' FWL

SCALE: 1" = 100'  
DATE: 10-01-13  
DRAWN BY: S.S.



PAD DISTURBANCE = ± 4.006 ACRES  
ROAD & UTILITIES DISTURBANCE = ± 3.324 ACRES  
TOTAL = ± 7.330 ACRES