

SCHLUMBERGER

COUNTY HASKELL WELL KOENIG
 LOCATION SEC. 1-29S-34W
 WELL LIGHT "D" NO. 1
 COMPANY CITIES SERVICE OIL COMPANY

FIELD KOENIG
 COUNTY HASKELL STATE KANSAS
 Location: C-C-N-SE Other Services: DIL
CNWSE
 Sec. 1 Twp. 29S Rgn. 34W

Permanent Datum: GROUND LEVEL, Elev.: 2900
 Log Measured From K.L., 10 Ft. Above Perm. Datum
 Drilling Measured From K.L. Elev.: K.B. 2978
D.P. 2977
O.L. 2969

DATE	2-7-70	58153 WCO
WELL	ONE	
LOG	PDC-GR	
LOG NO.	10180	
LOG DATE	2-7-70	
LOG INTERVAL	2500	
LOG TYPE	CHEMICAL	
LOG BY	JACQUES, JOHNSON	

RUN-IN-HOLE RECORD				CASING RECORD			
Run No.	Log No.	Time	Wgt.	Run No.	Log No.	Time	Wgt.
1	7/7A	18:30	Y.D.	0	5A	--	G.L.

No well name, location and log number information data were furnished by the customer.

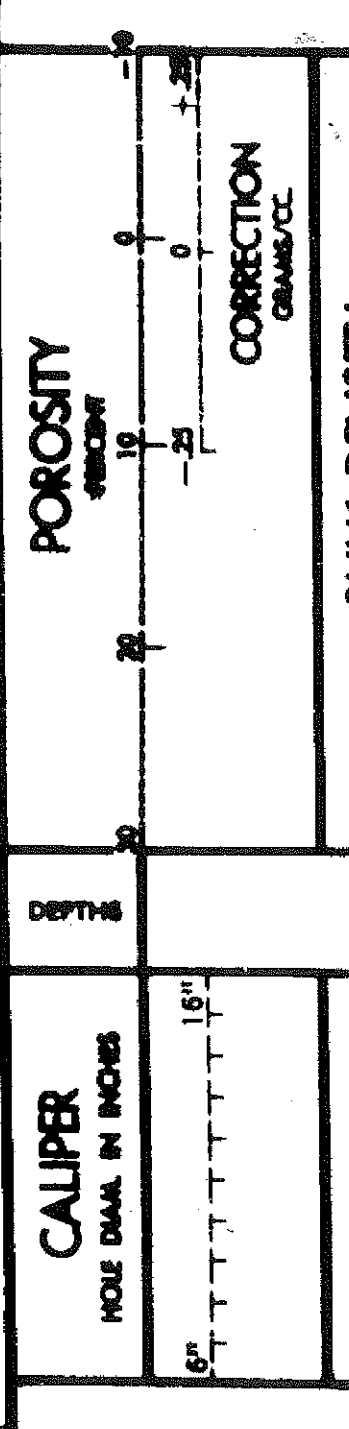
Run No.	RO P-D	RO H-D	RO H-A	RO E	Form No.	SP. No.	SP. No.	SP. No.	SP. No.	SP. No.
1	149	240	300	56	2417	87	178	3713		
2										
3										

CALIBRATION DATA				CORRECTION DATA			
Run No.	API Beads	Background CH	Total CH	Run No.	API Beads	Background CH	Total CH
1	150	60	460	1	320	640	640
2							
3							

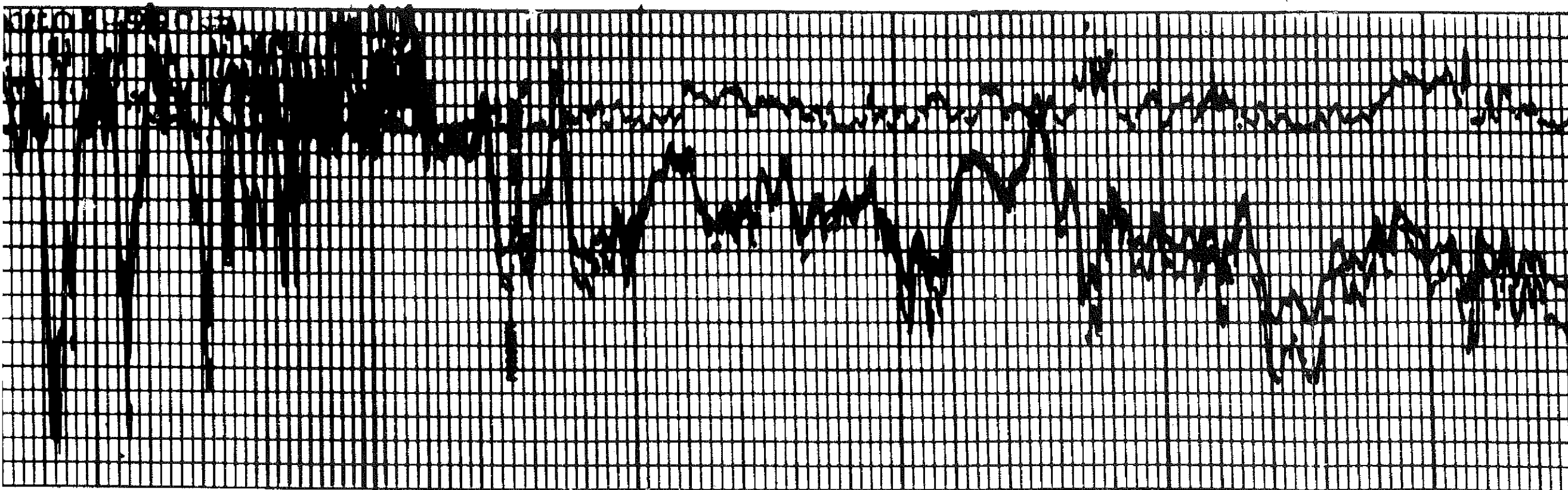
Run No.	API Beads	API Beads	API Beads	API Beads	API Beads	API Beads	API Beads	API Beads	API Beads	API Beads
1	2500	1.0	30	150	1.0	2.71	LIQUID	FW	FW	FW
2										
3										

Run No.	API Beads by Vol.	% Oil by Vol.	% Water by Vol.	% Solids by Vol.	API Beads	API Beads	API Beads	API Beads	API Beads	API Beads
1										
2										
3										

All interpretations are opinions based on information from electrical or other measurements and no account, and do not, guarantee the accuracy or correctness of any interpretation and no shall not, except in the case of gross or willful negligence on our part, be liable or responsible for any loss, with, damage or expense incurred or sustained by anyone relying thereon. Any interpretation made by any of our officers, agents or employees. These interpretations are also subject to Class 7 of our Standard Terms and Conditions on file with our nearest Field Office.



CAMMA RAY

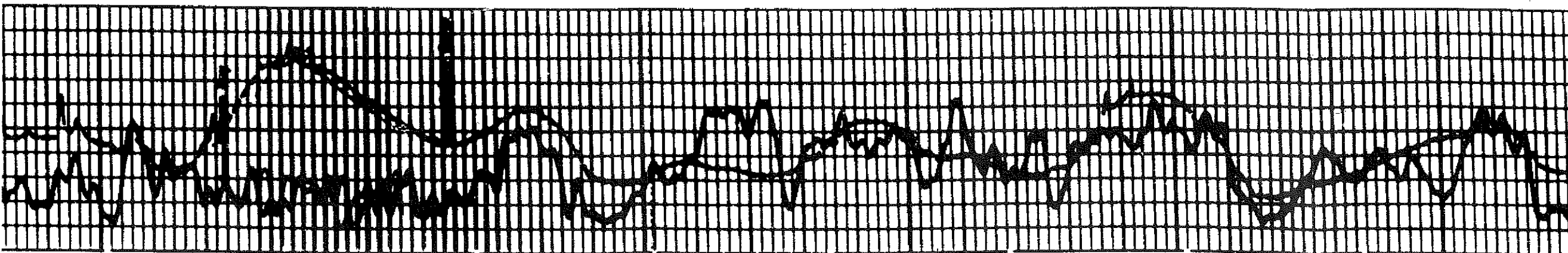


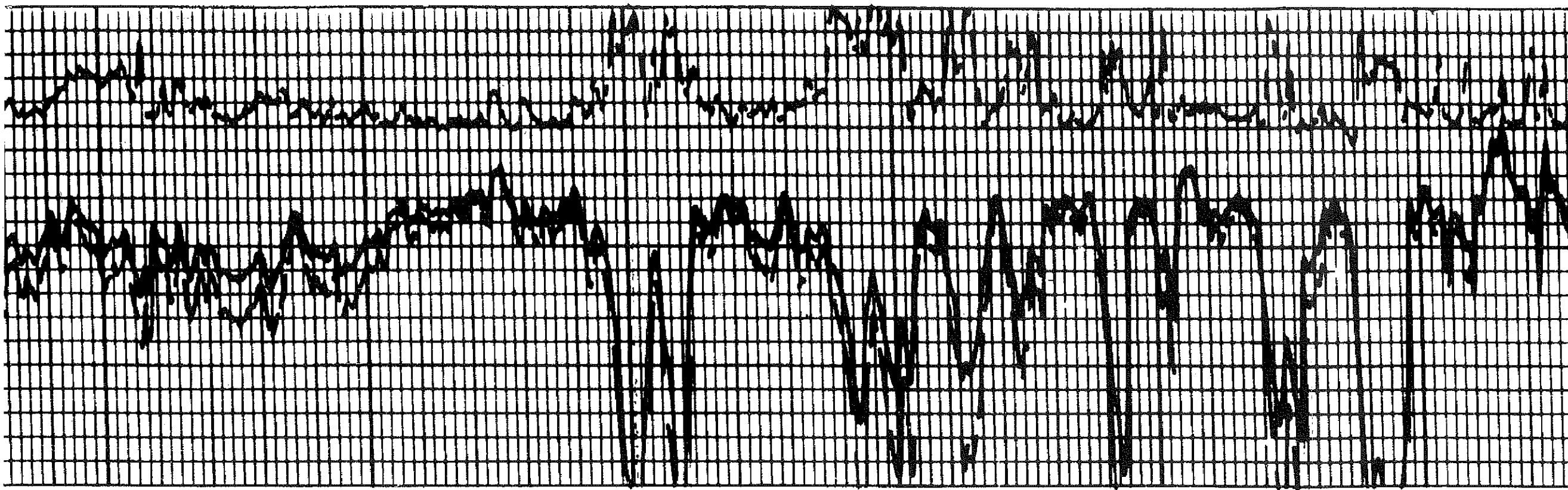
2500

2600

TGS

2700

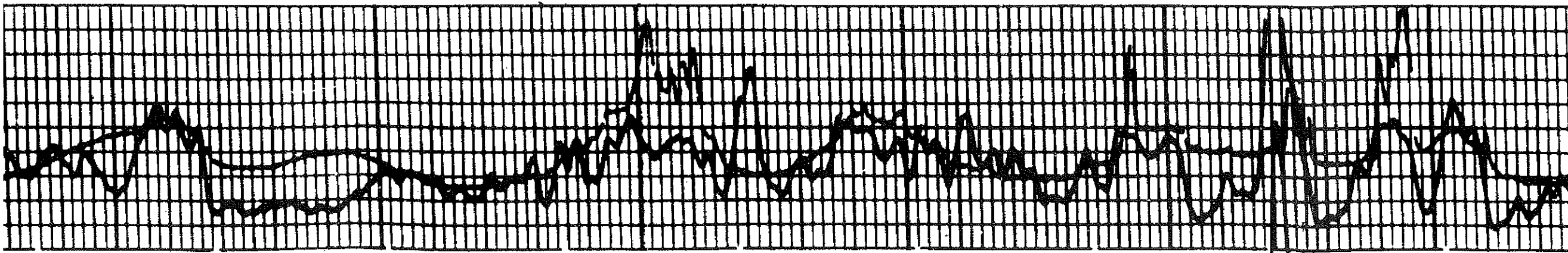


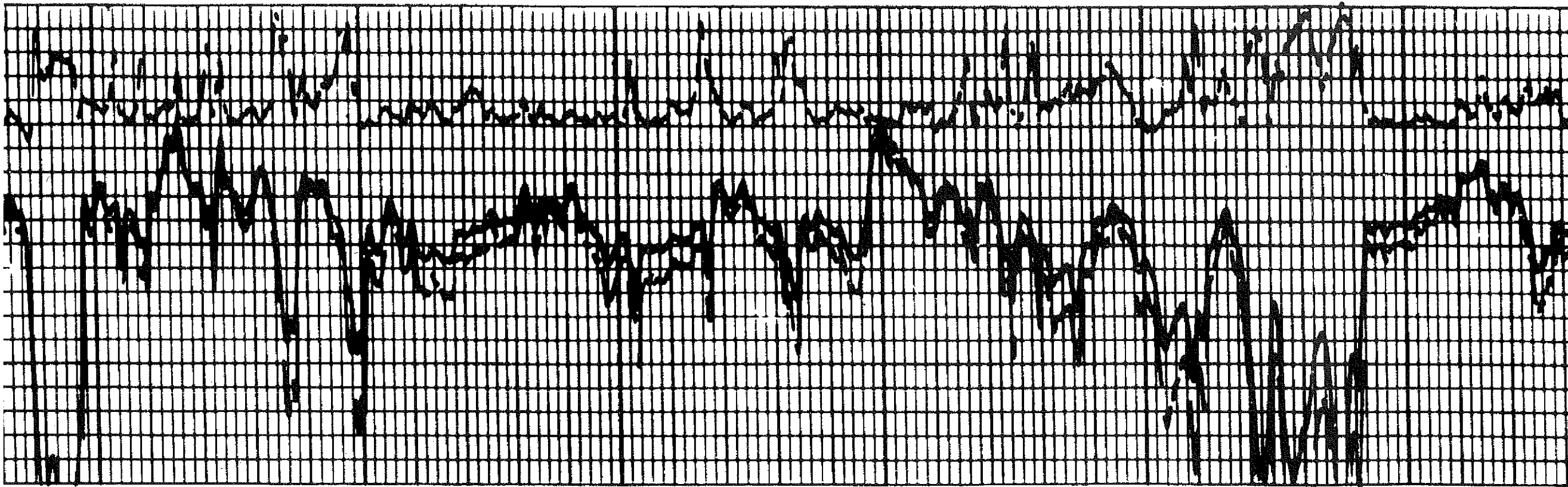


2000

2500

3000



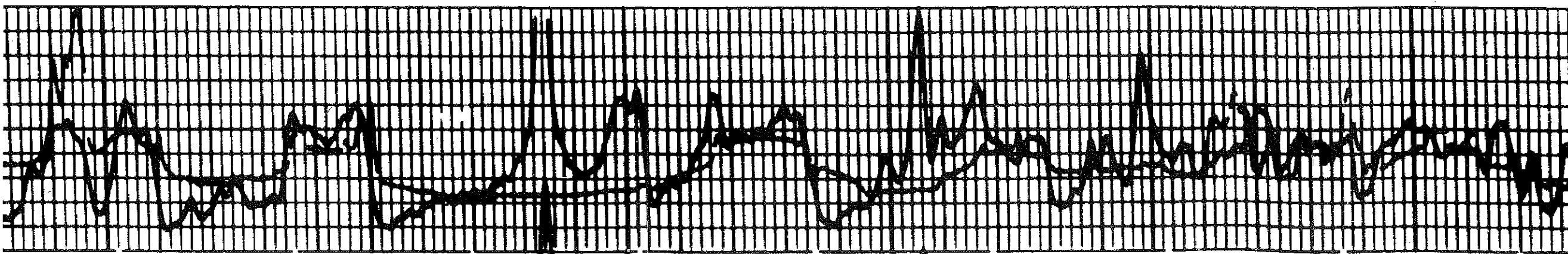


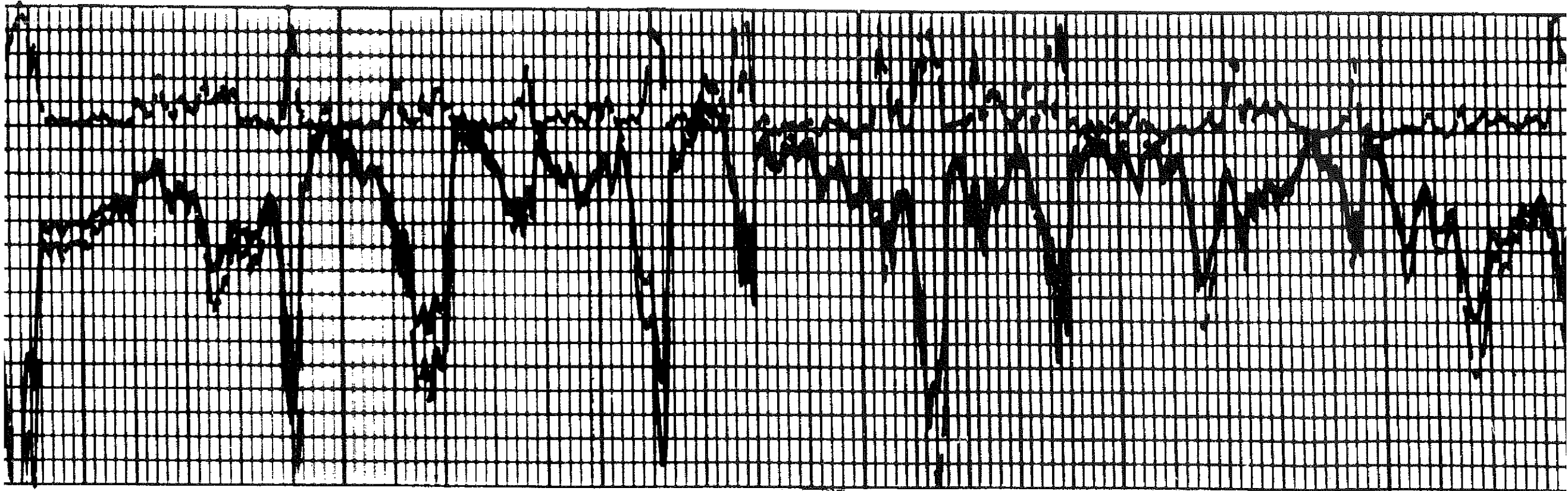
3000

3100

TGS

3200

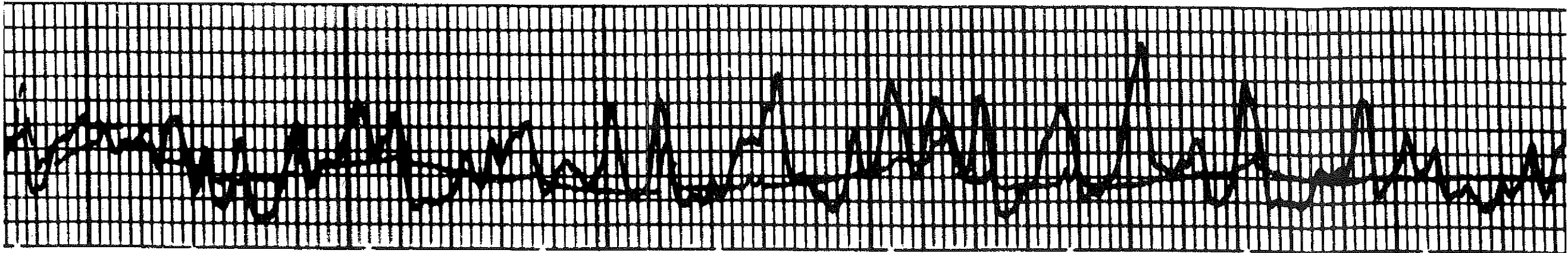


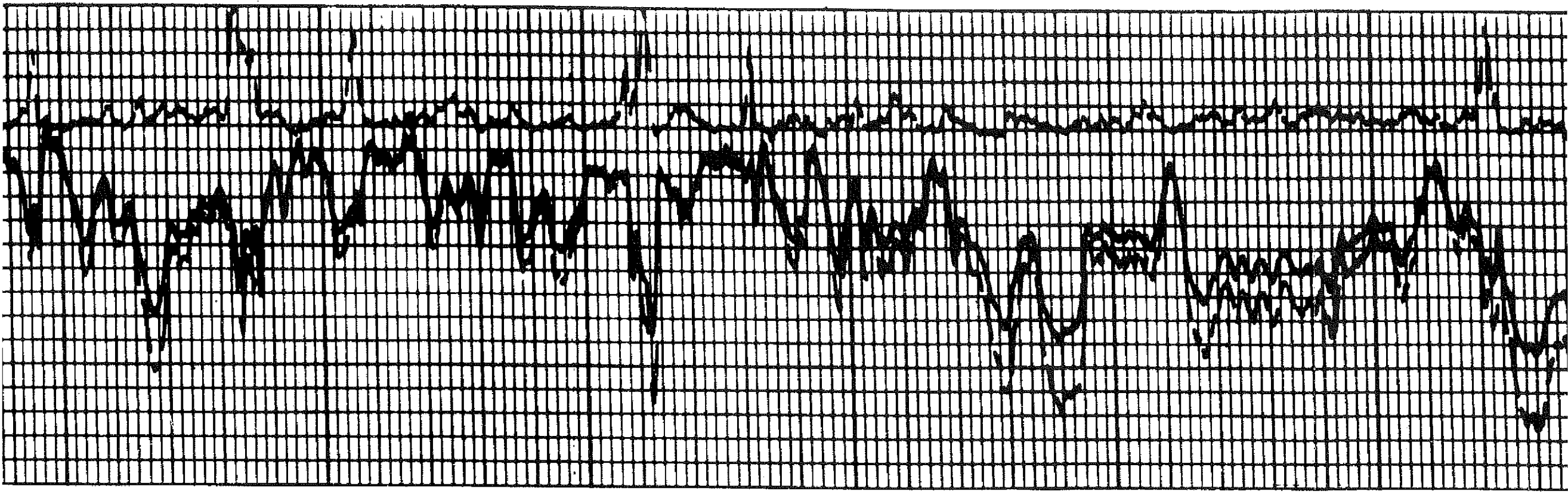


1300

1400

1500



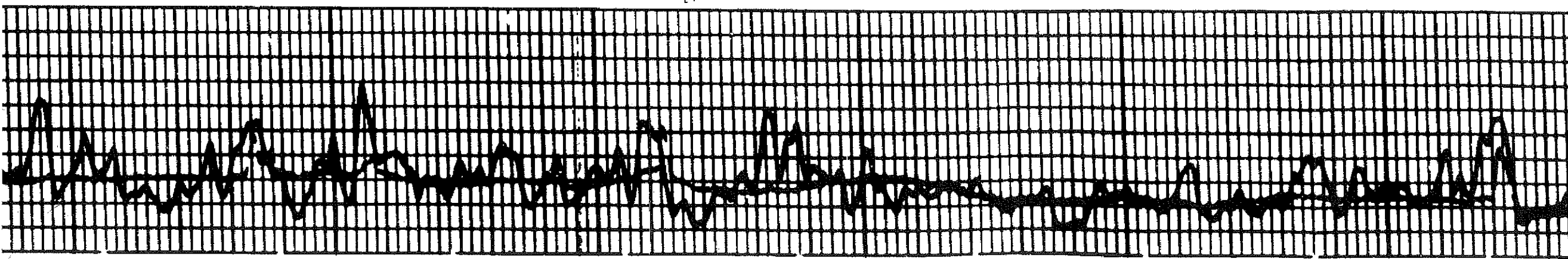


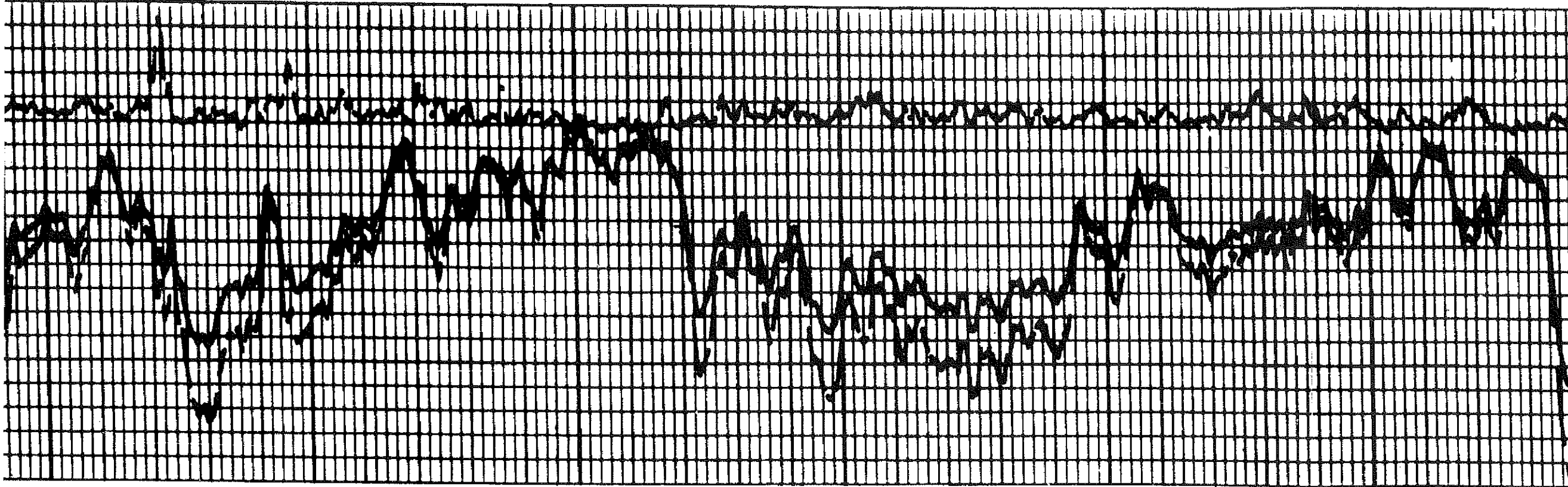
3800

3900

TGS

3700

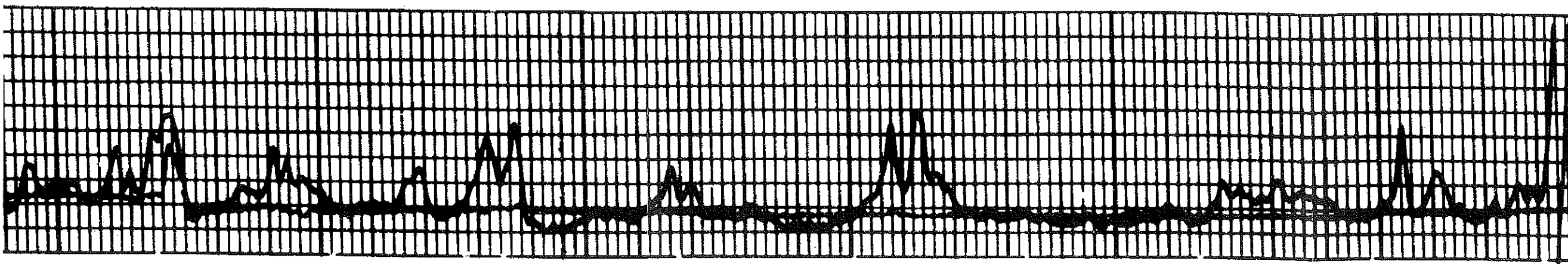




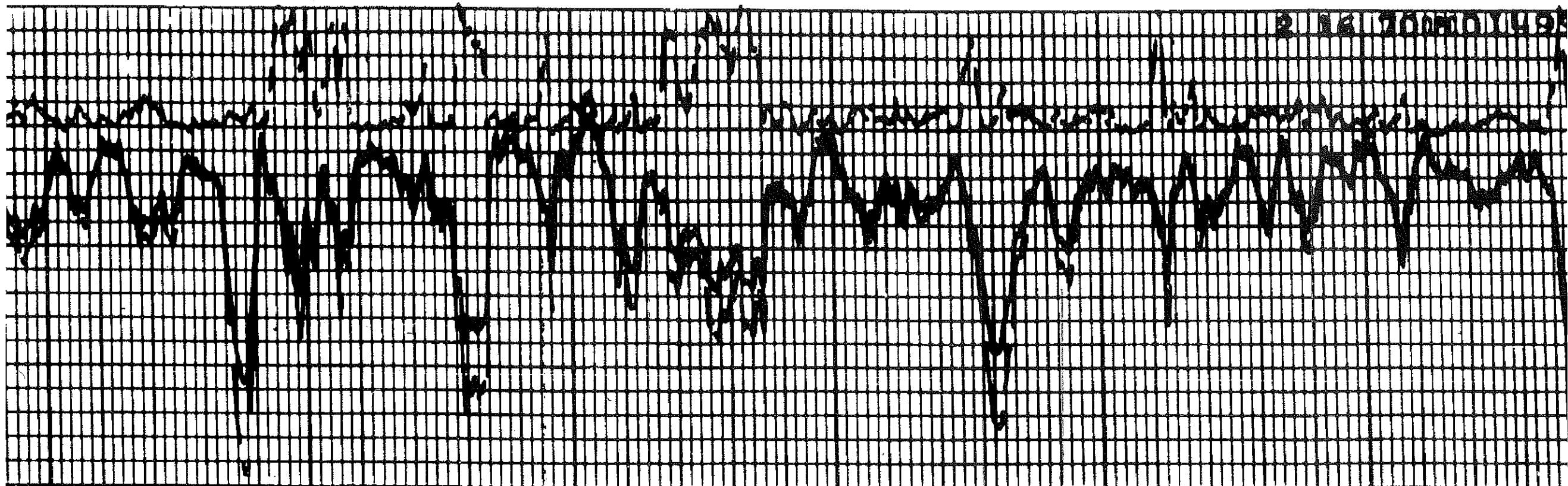
3000

3000

4000



2 13 70 01 49



4000

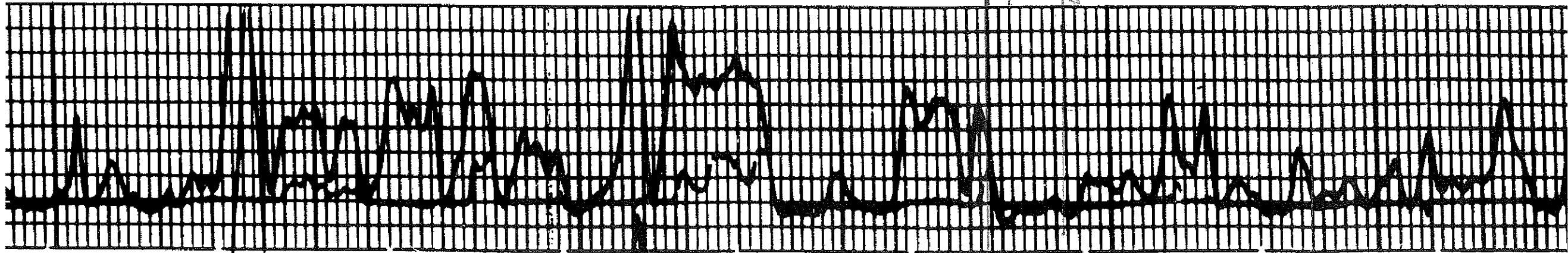
400

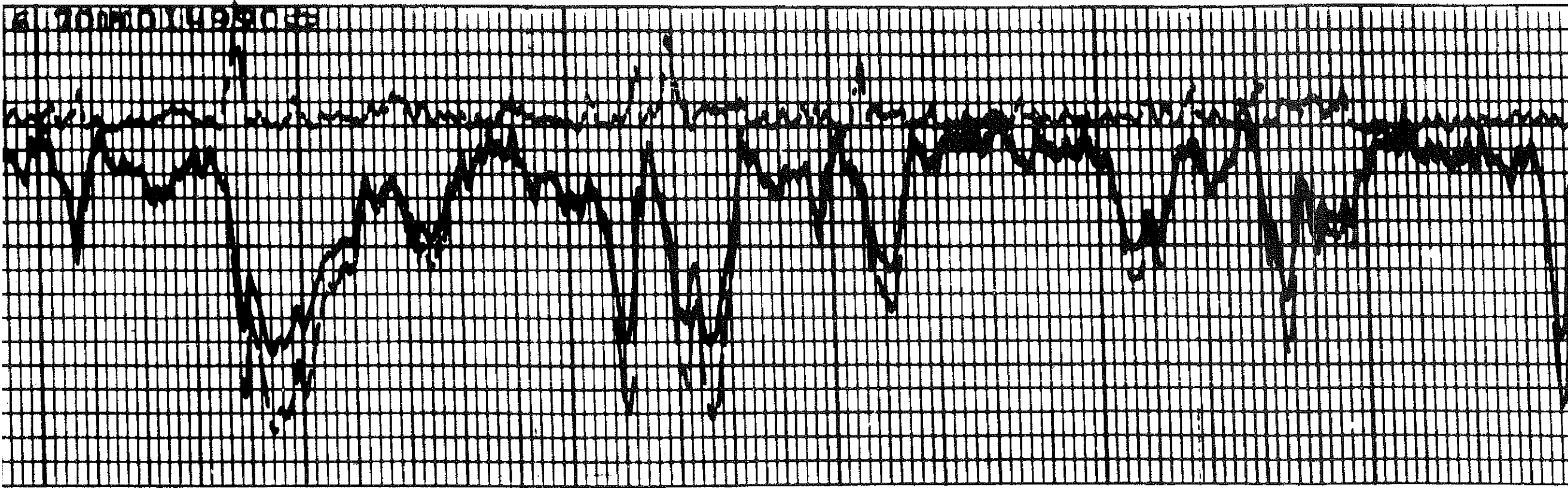
TGS

4178

Ave. h₂ sig. 8
par. 6.554

4200

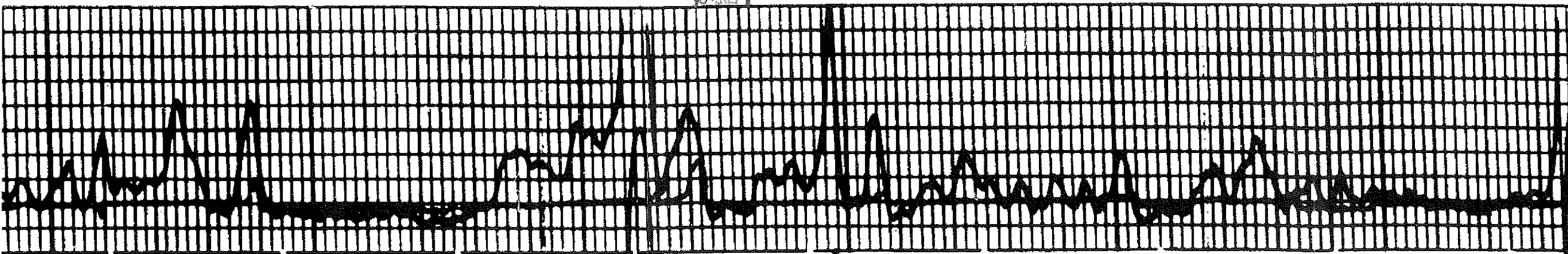


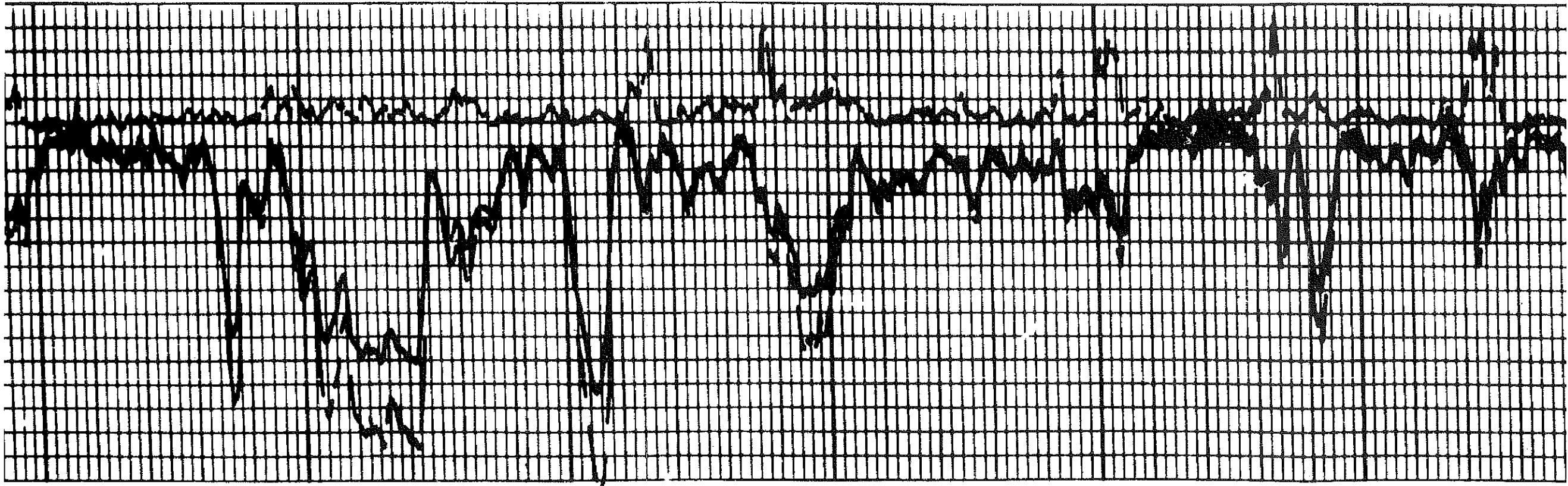


4300

4400

4500



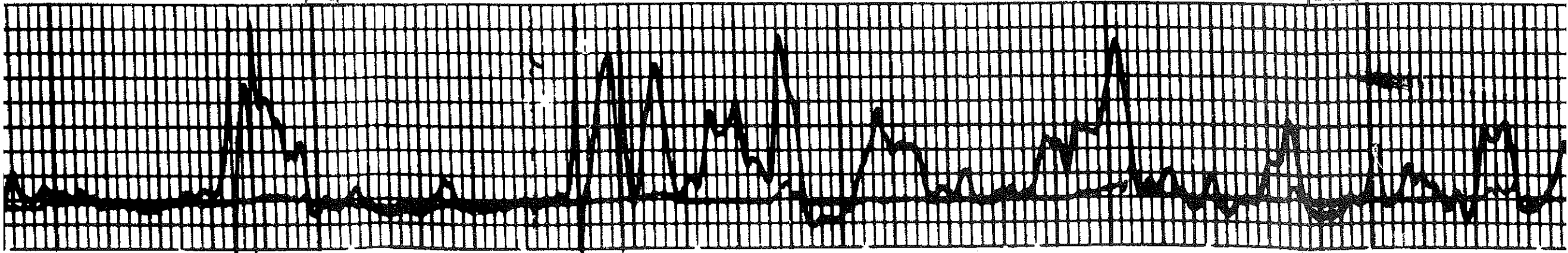


4600

4600

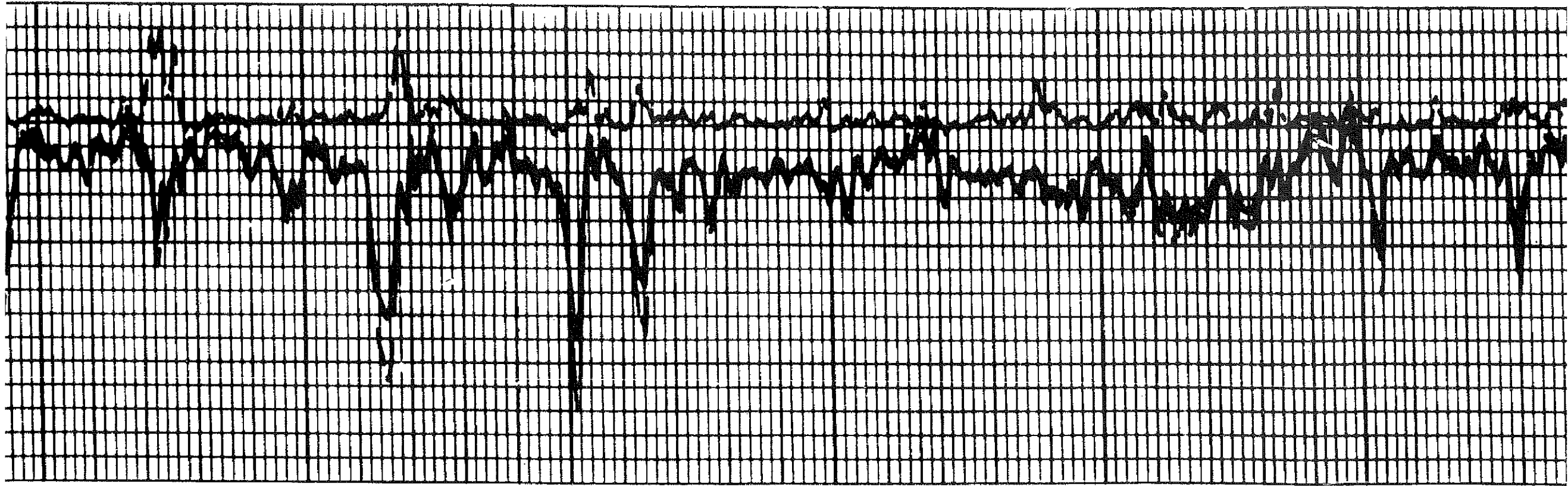
TGS

4700



3

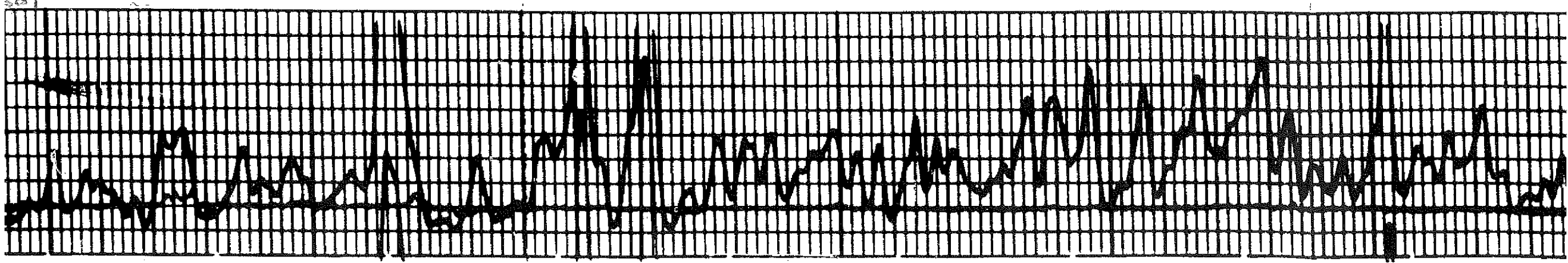
4600

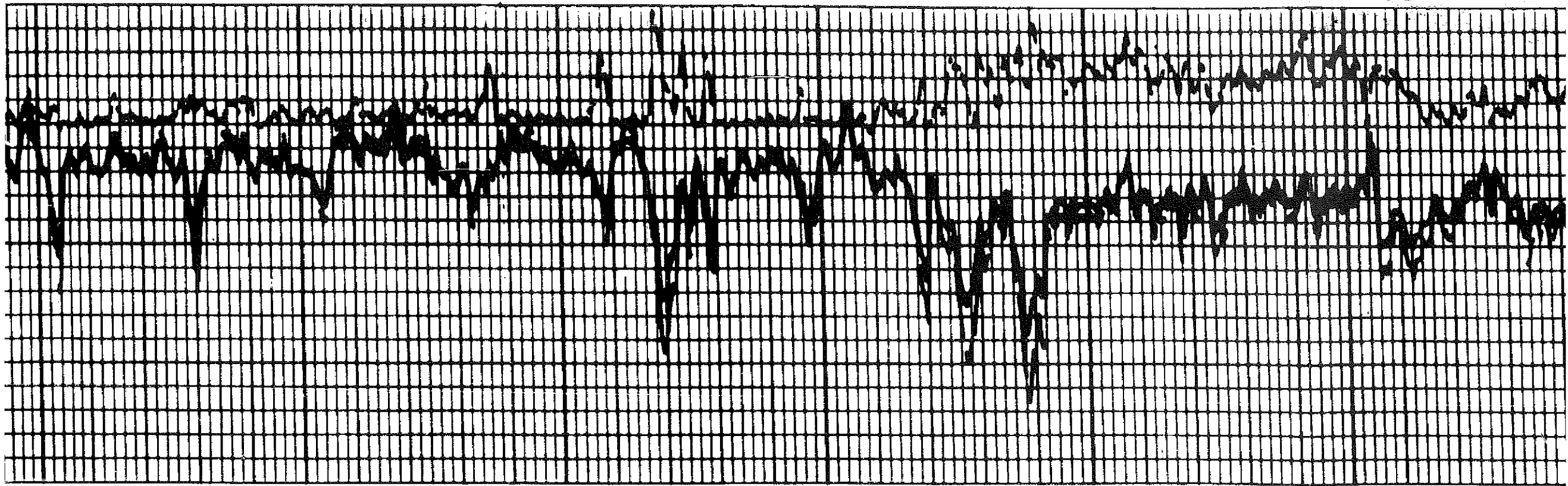


4800

4800

8000





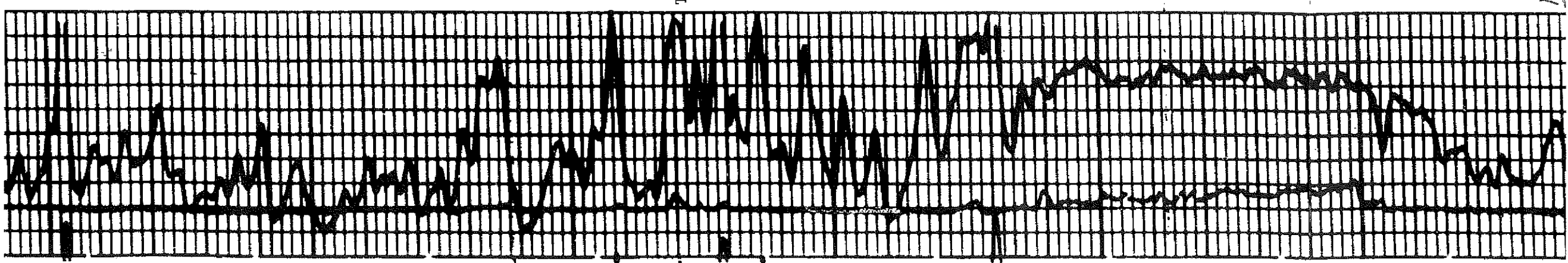
3000

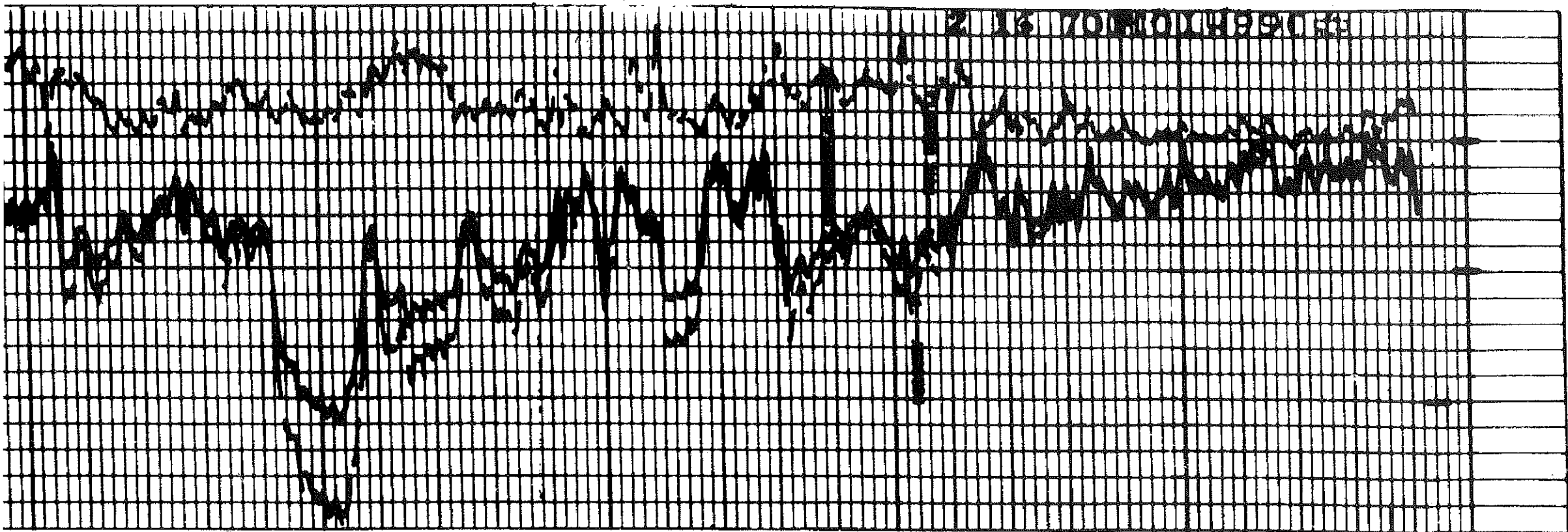
300

TCS

3200

1/18/81





MRP

8300

8400

8500

8200

