



**TRILOBITE  
TESTING, INC.**

# DRILL STEM TEST REPORT

Hess Oil Comp  
p.o. box 1009  
McPherson, Ks  
67460-1009  
ATTN: Seth Evenson

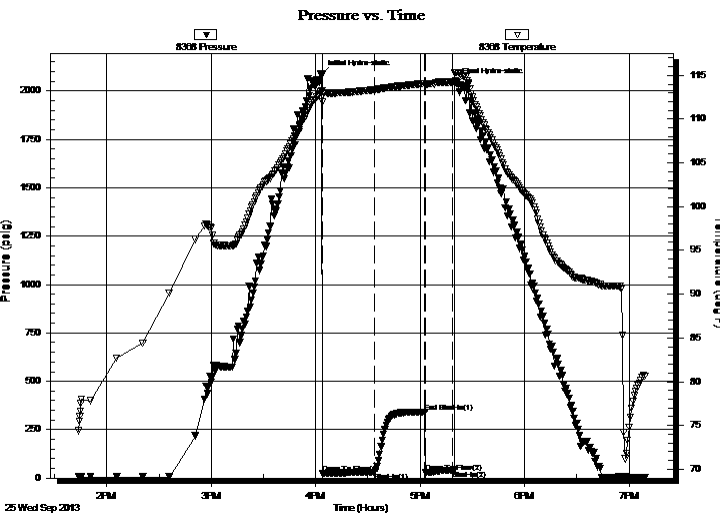
**16-17s-22w Ness, Ks**  
**McCurdy #1**  
Job Ticket: 54635      **DST#: 1**  
Test Start: 2013.09.25 @ 13:43:48

## GENERAL INFORMATION:

Formation: **Cherokee**  
Deviated: No Whipstock: 0.00 ft (KB)  
Time Tool Opened: 16:03:43  
Time Test Ended: 19:20:57  
Interval: **4202.00 ft (KB) To 4265.00 ft (KB) (TVD)**  
Total Depth: 4265.00 ft (KB) (TVD)  
Hole Diameter: 7.88 inches Hole Condition: Fair  
Test Type: Conventional Bottom Hole (Initial)  
Tester: Shane McBride  
Unit No: 55  
Reference Elevations: 2301.00 ft (KB)  
2296.00 ft (CF)  
KB to GR/CF: 5.00 ft

**Serial #: 8368      Outside**  
Press @ Run Depth: 29.27 psig @ 4203.00 ft (KB)      Capacity: 8000.00 psig  
Start Date: 2013.09.25      End Date: 2013.09.25      Last Calib.: 2013.09.25  
Start Time: 13:43:48      End Time: 19:08:57      Time On Btm: 2013.09.25 @ 16:03:28  
Time Off Btm: 2013.09.25 @ 17:19:58

**TEST COMMENT:** 3/4" in blow  
No return  
No blow, Flush tool after 5 min. 1/4" in surge, died in 7 min.  
Pull tool



## PRESSURE SUMMARY

| Time (Min.) | Pressure (psig) | Temp (deg F) | Annotation           |
|-------------|-----------------|--------------|----------------------|
| 0           | 2082.24         | 113.25       | Initial Hydro-static |
| 1           | 23.52           | 111.92       | Open To Flow (1)     |
| 31          | 29.27           | 113.35       | Shut-In(1)           |
| 60          | 341.28          | 114.08       | End Shut-In(1)       |
| 60          | 29.02           | 113.85       | Open To Flow (2)     |
| 76          | 38.72           | 114.25       | Shut-In(2)           |
| 77          | 2042.63         | 115.27       | Final Hydro-static   |

## Recovery

| Length (ft) | Description | Volume (bbl) |
|-------------|-------------|--------------|
| 55.00       | mud 100% m  | 0.27         |
|             |             |              |
|             |             |              |
|             |             |              |
|             |             |              |

## Gas Rates

| Choke (inches) | Pressure (psig) | Gas Rate (Mcf/d) |
|----------------|-----------------|------------------|
|                |                 |                  |



**TRILOBITE  
TESTING, INC.**

# DRILL STEM TEST REPORT

**FLUID SUMMARY**

Hess Oil Comp

**16-17s-22w Ness, Ks**

p.o. box 1009  
McPherson, Ks  
67460-1009

**McCurdy #1**

Job Ticket: 54635

**DST#: 1**

ATTN: Seth Evenson

Test Start: 2013.09.25 @ 13:43:48

## Mud and Cushion Information

Mud Type: Gel Chem

Cushion Type:

Oil API:

0 deg API

Mud Weight: 9.00 lb/gal

Cushion Length:

ft

Water Salinity:

0 ppm

Viscosity: 52.00 sec/qt

Cushion Volume:

bbbl

Water Loss: 6.40 in<sup>3</sup>

Gas Cushion Type:

Resistivity: 0.00 ohm.m

Gas Cushion Pressure:

psig

Salinity: 4900.00 ppm

Filter Cake: 1.00 inches

## Recovery Information

Recovery Table

| Length<br>ft | Description | Volume<br>bbl |
|--------------|-------------|---------------|
| 55.00        | mud 100%m   | 0.270         |

Total Length: 55.00 ft      Total Volume: 0.270 bbl

Num Fluid Samples: 0

Num Gas Bombs: 0

Serial #:

Laboratory Name:

Laboratory Location:

Recovery Comments:

