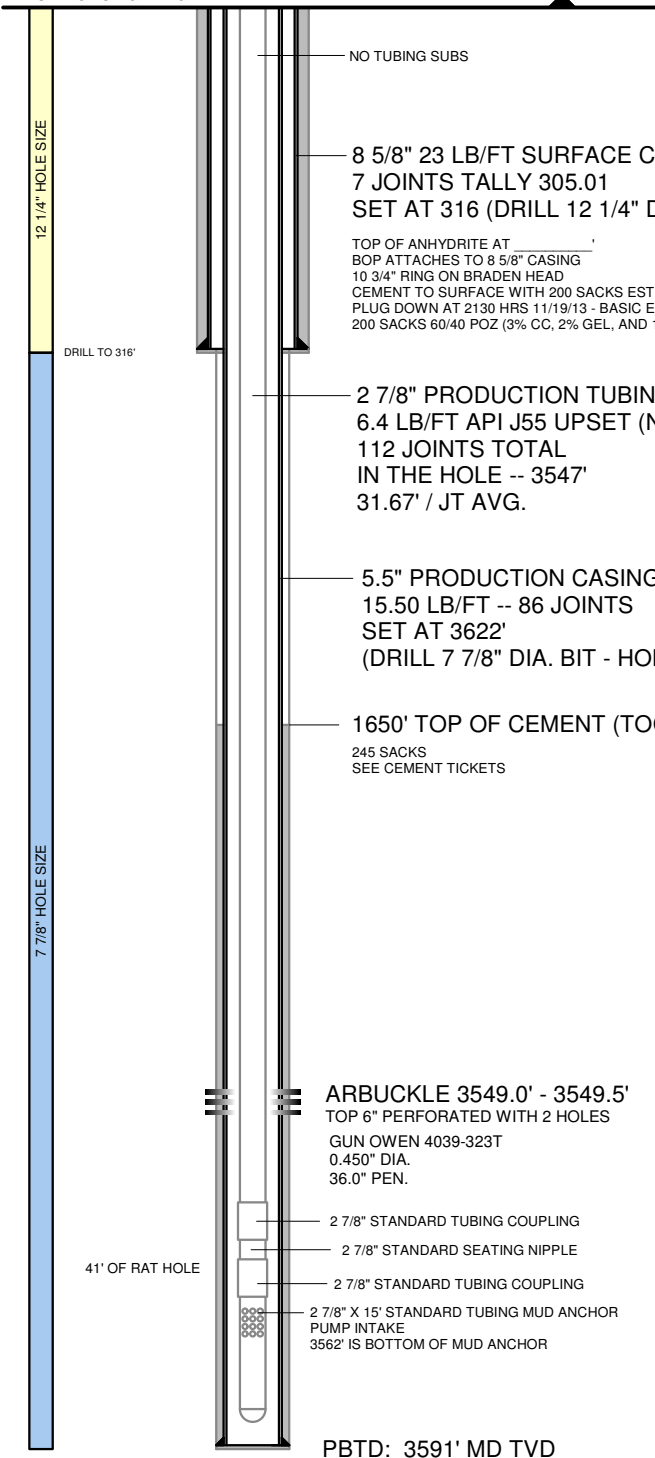


SURFACE TEMP: 70 DEG F MAX

K.B.: 8'

G.L. ELEVATION 1215' (SHL)

5 1/2" X 2 7/8" TUBING HEAD  
SET TOP CLPG 12" AGL



NO TUBING SUBS

8 5/8" 23 LB/FT SURFACE CASING (NEW)  
7 JOINTS TALLY 305.01  
SET AT 316 (DRILL 12 1/4" DIA. BIT)

TOP OF ANHYDRITE AT \_\_\_\_\_  
BOP ATTACHES TO 8 5/8" CASING  
10 3/4" RING ON BRADEN HEAD  
CEMENT TO SURFACE WITH 200 SACKS EST. - CIRCULATED  
PLUG DOWN AT 2130 HRS 11/19/13 - BASIC ENERGY SERVICES  
200 SACKS 60/40 POZ (3% CC, 2% GEL, AND 1/2 LB CF)

2 7/8" PRODUCTION TUBING  
6.4 LB/FT API J55 UPSET (NEW)  
112 JOINTS TOTAL  
IN THE HOLE -- 3547'  
31.67' / JT AVG.

5.5" PRODUCTION CASING (NEW)  
15.50 LB/FT -- 86 JOINTS  
SET AT 3622'  
(DRILL 7 7/8" DIA. BIT - HOLE)

1650' TOP OF CEMENT (TOC)  
245 SACKS  
SEE CEMENT TICKETS

ARBUCKLE 3549.0' - 3549.5'  
TOP 6" PERFORATED WITH 2 HOLES  
GUN OWEN 4039-323T  
0.450" DIA.  
36.0" PEN.

2 7/8" STANDARD TUBING COUPLING  
2 7/8" STANDARD SEATING NIPPLE  
2 7/8" STANDARD TUBING COUPLING  
2 7/8" X 15' STANDARD TUBING MUD ANCHOR  
PUMP INTAKE  
3562' IS BOTTOM OF MUD ANCHOR

PBTD: 3591' MD TVD  
RTD: 3633' MD TVD.  
LTD: 3626' MD TVD  
DOWNHOLE TEMP: 125 DEG F

DOWN HOLE SUCKER ROD PUMP:  
2.00" INSERT PUMP  
PUMP LENGTH: 16' (NICARD AND SS)  
BOTTOM HOLD DOWN TYPE  
TRAVELING BARREL  
2' X 7/8" PONY ROD ON TOP OF PUMP  
8' GAS SEPARATOR ON THE BOTTOM  
PUMP INTAKE DEPTH: 3555'  
PUMP IS SETTING BELOW THE PERFORATIONS  
GAS IS VENTING AT WELL HEAD (TUBING/CASING)

NOTES:

PUMPING UNIT: C - 160 -190 - 74 (74" SURFACE STROKE)  
CONVENTIONAL PARKERSBURG UNIT  
30 HP ELECTRIC MOTOR WITH 50 HP SPOCC VFD  
VFD INSTALLED  
RUN TIME: 24 HRS PER DAY  
1.25" X 16' POLISHED ROD WITH LINER ASSEMBLY (16')  
2' PONY ROD ON TOP (7/8" GRADE D) (2')  
1.50" X 8' HARD LINED POLISHED ROD LINER WITH SEAL (8')  
54 - 7/8" GRADE D SUCKER RODS ON TOP (1350')  
83 - 3/4" GRADE D SUCKER RODS ON BOTTOM (2075')  
2 - 1.50" X 25' SINKER BAR ON TOP OF PUMP (50')  
ONE 2' X 7/8" GRADE D PONY ROD ON BOTTOM (TOP OF PUMP) (2')  
SPEED RANGE: 4 (7.7) TO 14.4 SPM  
MAX. SPEED: 14.4 SPM  
MAX. DISPLACEMENT: 475 BPD (2.00" BORE PUMP)  
MAX. DISPLACEMENT: 900 BPD (2.75" BORE PUMP W/TUBING ANCHOR)

TUBULARS

PURPOSE SIZE	CONDUCTOR 13 3/8"	SURFACE 8 5/8"	INTERMEDIATE	PRODUCTION 5 1/2"	PROD. TUBING 2 7/8"
WEIGHT	NONE	2,946 PSIG	NONE	15.5 LB/FT	6.40 LB/FT
GRADE	NONE	J-55	NONE	J-55	J-55
BURST	NONE	24.0 LB/FT	NONE	4,812 PSIG	7,265 PSIG
COLLAPSE	NONE	381,395 LBF	NONE	4,043 PSIG	7,676 PSIG
YIELD	NONE	1,434 PSIG	NONE	248,274 LBF	99,661 LBF
CAPACITY	NONE	0.064 BBL/FT	NONE	0.024 BBL/FT	0.006 BBL/FT
THICKNESS	NONE	0.2640"	NONE	0.2750"	0.2170"
ID	NONE	8.0970"	NONE	4.9500"	2.4410"
DRIFT ID	NONE	7.9720"	NONE	4.8250"	2.3470"
AREA	NONE	51.49 IN2	NONE	19.42 IN2	4.68 IN2
SETTING DEPTH	NONE	305'	NONE	3,622'	3547' TO PUMP
LENGTH	NONE	305'	NONE	3,622'	NEED 3591'
FOB	NONE	CHASE, KS	NONE	CHASE, KS	CHASE, KS
COST	NONE	\$ ____ / FT	NONE	\$ ____ / FT	\$ ____ / FT

DATE	09/20/2013
APPROVED BY	B. KELSO
AFE	TBD
API No.	15035245380000
GL ELEVATION	1215'
KB	8'
KB ELEVATION	1223'
RIG	FOSSIL #2

**BOGNER A #1**  
COWLEY COUNTY, KANSAS  
22-T33S-R05E  
SHL: 1825 FSL, 3145 FEL  
VERTICAL WELLBORE  
ALBRIGHT FIELD

