

OPERATOR

Company: Lebsack Oil production
 Address: PO Box 354
 Chase, KS 67524

Contact Geologist:
 Contact Phone Nbr: 620-938-2396
 Well Name: Garden City 4-12
 Location: 8 5/8" @ 437'
 Pool:
 State: Kansas, Finney County

API: 15-055-22236-00-00
 Field: Tanker
 Country: USA



Joshua R. Austin

Petroleum Geologist

report for

Lebsack Oil Production, Inc.



Scale 1:240 Imperial

Well Name: Garden City 4-12
 Surface Location: 8 5/8" @ 437'
 Bottom Location:
 API: 15-055-22236-00-00
 License Number:
 Spud Date: 9/10/2013 Time: 3:34 PM
 Region: S2-NW-NW-SE 12-22s-34w
 Drilling Completed: 9/20/2013 Time: 5:50 PM
 Surface Coordinates: 2,304' From South Line & 2310' From East Line
 Bottom Hole Coordinates:
 Ground Elevation: 2909.00ft
 K.B. Elevation: 2920.00ft
 Logged Interval: 3600.00ft To: 4860.00ft
 Total Depth: 4860.00ft
 Formation: Mississippi
 Drilling Fluid Type: Chemical Mud was displaced at 3462'

SURFACE CO-ORDINATES

Well Type: Vertical
 Longitude: Latitude:
 N/S Co-ord: 2,304' From South Line
 E/W Co-ord: 2310' From East Line

LOGGED BY

Company: Joshua R. Austin, Petroleum Geologist
 Address: 732 NE 110th Ave
 Stafford, KS 67578

Phone Nbr: 620-546-3960
 Logged By: Geologist Name: Josh Austin

CONTRACTOR

Contractor: H2 Drilling Company
 Rig #: 2
 Rig Type: mud rotary
 Spud Date: 9/10/2013 Time: 3:34 PM
 TD Date: 9/20/2013 Time: 5:50 PM
 Rig Release: Time:

ELEVATIONS

K.B. Elevation: 2920.00ft
K.B. to Ground: 11.00ft

Ground Elevation: 2909.00ft

NOTES

On the basis of the electric logs and after running DST number 3, it was recommended by all parties involved in the Garden City #4-12 to run 5 1/2" production casing at 4847'

Lebsack Oil Production, Inc. well comparison sheet

	DRILLING WELL				COMPARISON WELL				COMPARISON WELL			
	Garden City #4-12				Garden City #2-12				Loomis 2-12			
	2920 KB				2921 KB		Structural Relationship		2922 KB		Structural Relationship	
Formation	Sample	Sub-Sea	Log	Sub-Sea	Log	Sub-Sea	Sample	Log	Log	Sub-Sea	Sample	Log
Heebner	3798	-878	3796	-876	3794	-873	-5	-3	3801	-879	1	3
Toronto	3817	-897	3812	-892	3809	-888	-9	-4	3822	-900	3	8
Lansing	3892	-972	3892	-972	3887	-966	-6	-6	3898	-976	4	4
Base KC	4316	-1396	4315	-1395	4312	-1391	-5	-4	4322	-1400	4	5
Marmaton	4338	-1418	4348	-1428	4340	-1419	1	-9	4348	-1426	8	-2
Pawnee	4420	-1500	4426	-1506	4417	-1496	-4	-10	4432	-1510	10	4
Ft. Scott	4456	-1536	4456	-1536	4453	-1532	-4	-4	4462	-1540	4	4
Cherokee Sh.	4467	-1547	4466	-1546	4460	-1539	-8	-7	4477	-1555	8	9
Morrow Shale	4646	-1726	4646	-1726	4638	-1717	-9	-9	4673	-1751	25	25
Mississippi	4716	-1796	4717	-1797	4690	-1769	-27	-28	4777	-1855	59	58
St. Louis C	4776	-1856	4775	-1855	4777	-1856	0	1	4848	-1926	70	71
RTD	4860	-1940	4860	-1940	4860	-1939		-1	4900	-1978		38
LTD	4858	-1938	4860	-1940	4860	-1939		-1				



**TRILOBITE
TESTING, INC.**

DRILL STEM TEST REPORT

Lebsack Oil Production

12-22s-34w-Finney, KS

P.O. Box 354
Chase, KS 67524

Garden City #4-12

ATTN: Josh Austin

Job Ticket: 54508 DST#: 1

Test Start: 2013.09.17 @ 19:30:00

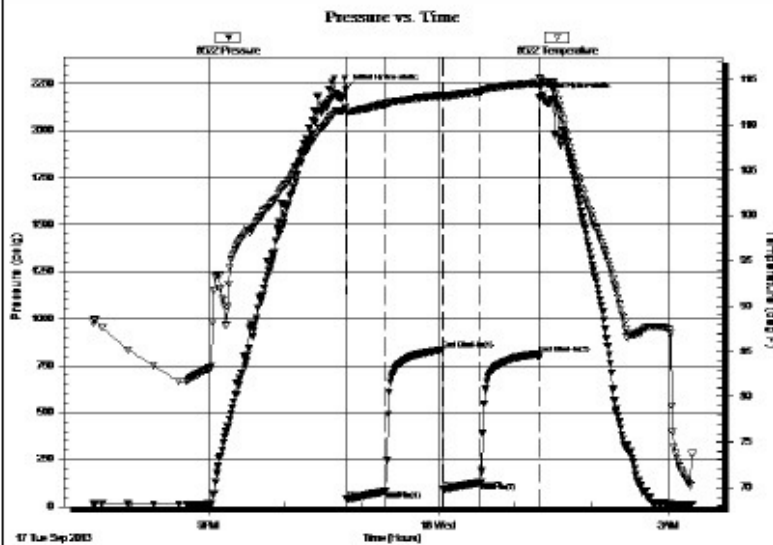
GENERAL INFORMATION:

Formation:	Pawnee	Test Type:	Conventional Bottom Hole (Initial)
Deviated:	No Whipstock: ft (KB)	Tester:	Cornelio Landa III (
Time Tool Opened:	22:48:15	Unit No:	69
Time Test Ended:	03:19:15	Reference Elevations:	2920.00 ft (KB) 2909.00 ft (CF)
Interval:	4417.00 ft (KB) To 4440.00 ft (KB) (TVD)	KB to GR/CF:	11.00 ft
Total Depth:	4440.00 ft (KB) (TVD)		
Hole Diameter:	7.88 inches	Hole Condition:	Fair

Serial #: 8522	Outside	Capacity:	8000.00 psig
Press@RunDepth:	128.57 psig @ 4419.00 ft (KB)	Last Calib.:	2013.09.18
Start Date:	2013.09.17	End Date:	2013.09.18
Start Time:	19:30:05	End Time:	03:19:14
		Time On Btm:	2013.09.17 @ 22:48:00
		Time Off Btm:	2013.09.18 @ 01:19:30

TEST COMMENT: IF: 3 in. of Blow
IS: No return

IS: No Return
 FF: 2 1/2 in. of Blow
 FSI: No Return



PRESSURE SUMMARY

Time (Min.)	Pressure (psig)	Temp (deg F)	Annotation
0	2220.24	112.01	Initial Hydro-static
1	36.62	111.36	Open To Flow (1)
31	82.14	112.31	Shut-In(1)
76	833.69	113.25	End Shut-In(1)
76	91.21	113.02	Open To Flow (2)
106	128.57	113.74	Shut-In(2)
151	812.46	114.63	End Shut-In(2)
152	2175.92	115.28	Final Hydro-static

Recovery

Length (ft)	Description	Volume (bbl)
120.00	Wm 50w 50m	0.59
120.00	Wm 10w 90m w ith oil specs	0.59

Gas Rates

	Choke (inches)	Pressure (psig)	Gas Rate (Mcf/d)



DRILL STEM TEST REPORT

LebSack Oil Production

12-22s-34w-Finney, KS

P.O. Box 354
 Chase, KS 67524

Garden City #4-12

ATTN: Josh Austin

Job Ticket: 54999

DST#: 2

Test Start: 2013.09.19 @ 04:06:00

GENERAL INFORMATION:

Formation: **Morrow Sand**
 Deviated: No Whipstock: ft (KB)
 Time Tool Opened: 06:18:45
 Time Test Ended: 10:12:30

Test Type: Conventional Bottom Hole (Reset)
 Tester: Cornelio Landa III (
 Unit No: 69

Interval: 4636.00 ft (KB) To 4700.00 ft (KB) (TVD)
 Total Depth: 4700.00 ft (KB) (TVD)
 Hole Diameter: 7.88 inches Hole Condition: Good

Reference Elevations: 2920.00 ft (KB)
 2909.00 ft (CF)
 KB to GR/CF: 11.00 ft

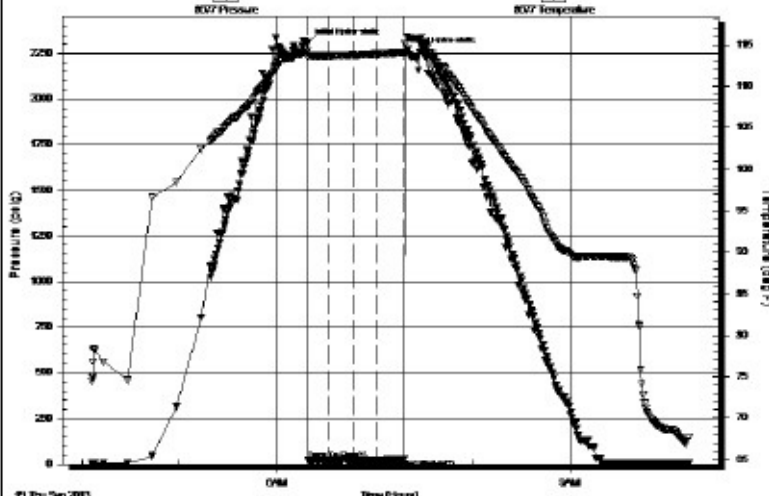
Serial #: 8677

Inside

Press@RunDepth: 22.71 psig @ 4637.00 ft (KB)
 Start Date: 2013.09.19 End Date: 2013.09.19
 Start Time: 04:06:05 End Time: 10:12:29

Capacity: 8000.00 psig
 Last Calib.: 2013.09.19
 Time On Btm: 2013.09.19 @ 06:18:30
 Time Off Btm: 2013.09.19 @ 07:18:30

TEST COMMENT: IF: Surface blow, died @ 13 min.
 IS: No return.
 FF: No blow.
 FSI: No return.



Time (Min.)	Pressure (psig)	Temp (deg F)	Annotation
0	2304.80	114.24	Initial Hydro-static
1	20.48	113.45	Open To Flow (1)
13	21.92	113.66	Shut-in(1)
28	31.54	113.77	End Shut-in(1)
29	22.08	113.77	Open To Flow (2)
43	22.71	113.92	Shut-in(2)
60	27.09	114.13	End Shut-in(2)
60	2252.97	115.14	Final Hydro-static

Recovery

Length (ft)	Description	Volume (bbl)
120.00	Mud 100m	0.59

* Recovery from multiple tests

Gas Rates

Choke (inches)	Pressure (psig)	Gas Rate (Mcf/d)



TRILOBITE TESTING, INC.

DRILL STEM TEST REPORT

LebSack Oil Production

12-22s-34w-Finney, KS

P.O. Box 354
Chase, KS 67524

Garden City #4-12

ATTN: Josh Austin

Job Ticket: 55000 DST#: 3

Test Start: 2013.09.20 @ 11:03:00

GENERAL INFORMATION:

Formation: **Mississippian**
 Deviated: No Whipstock: ft (KB)
 Time Tool Opened: 13:51:00
 Time Test Ended: 19:57:00
 Interval: 4760.00 ft (KB) To 4860.00 ft (KB) (TVD)
 Total Depth: 4860.00 ft (KB) (TVD)
 Hole Diameter: 7.88 inches Hole Condition: Fair
 Test Type: Conventional Bottom Hole (Reset)
 Tester: Bradley Walter
 Unit No: 69
 Reference Elevations: 2920.00 ft (KB)
 2909.00 ft (CF)
 KB to GR/CF: 11.00 ft

Serial #: 8677

Inside

Press@RunDepth: 142.32 psig @ 4761.00 ft (KB) Capacity: 8000.00 psig
 Start Date: 2013.09.20 End Date: 2013.09.20 Last Calib.: 2013.09.20
 Start Time: 11:03:05 End Time: 19:57:00 Time On Btm: 2013.09.20 @ 13:50:45
 Time Off Btm: 2013.09.20 @ 16:49:00

TEST COMMENT: IF: BOB @ 23 min.
 IS: 2" return.
 FF: BOB @ 19 min.
 FSI: 3" return.

Pressure vs. Time



PRESSURE SUMMARY

Time (Min.)	Pressure (psig)	Temp (deg F)	Annotation
0	2369.13	116.41	Initial Hydro-static
1	20.48	113.45	Open To Flow (1)



1	48.08	114.86	Open To Flow (1)
44	106.02	117.42	Shut-In(1)
91	1026.07	118.84	End Shut-In(1)
92	120.57	118.60	Open To Flow (2)
134	142.32	119.22	Shut-In(2)
177	1005.95	120.03	End Shut-In(2)
179	2251.67	120.38	Final Hydro-static

Recovery

Length (ft)	Description	Volume (bbl)
120.00	mco 50m 50o	0.59
120.00	mco 30m 70o	0.59
60.00	mco 20m 80o	0.84
0.00	480' GIP	0.00

* Recovery from multiple tests

Gas Rates

	Choke (inches)	Pressure (psig)	Gas Rate (Mcf/d)
--	----------------	-----------------	------------------

ROCK TYPES

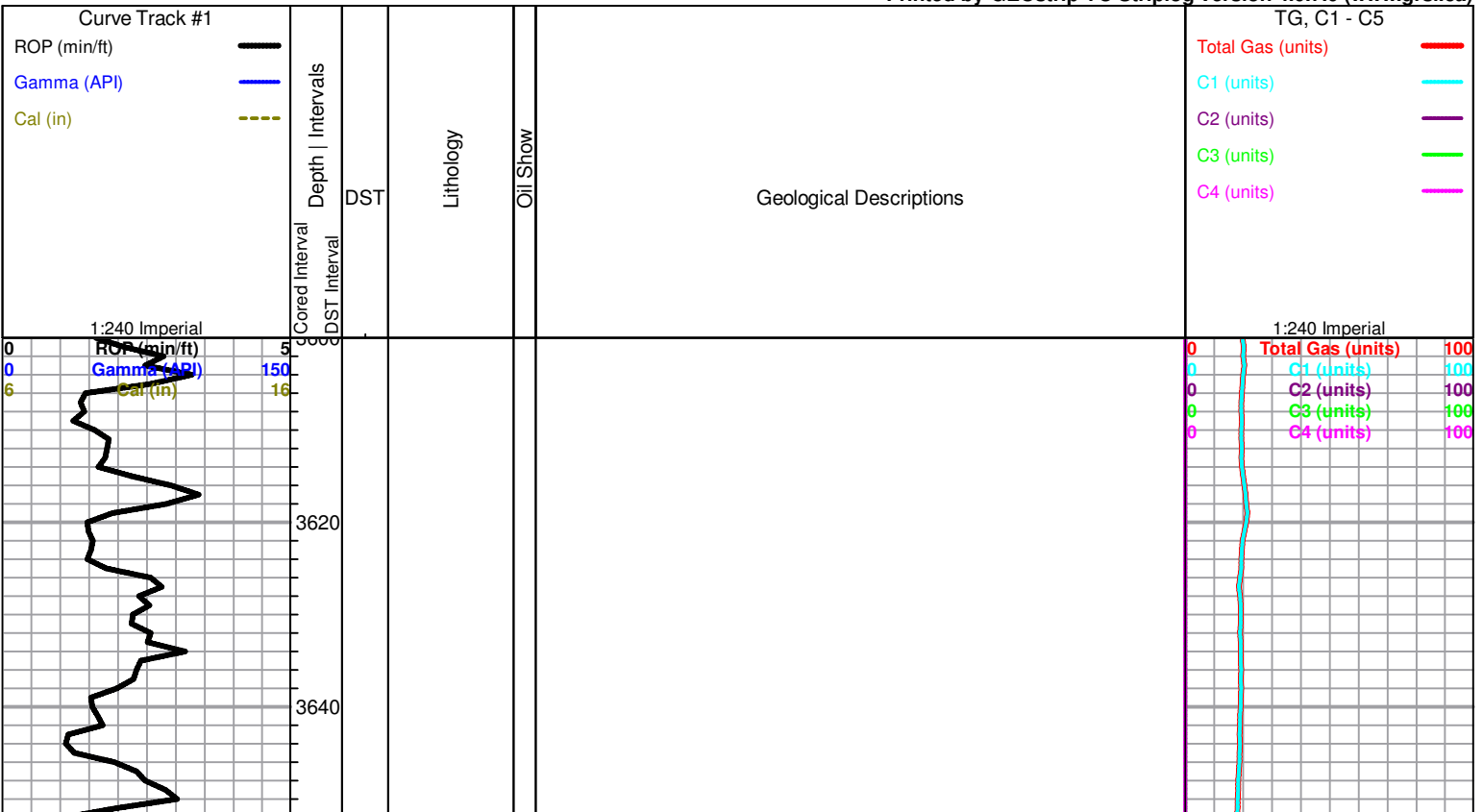
	sdY lmst		shale, grn		Carbon Sh
	Lmst fw7>		shale, gry		Ss

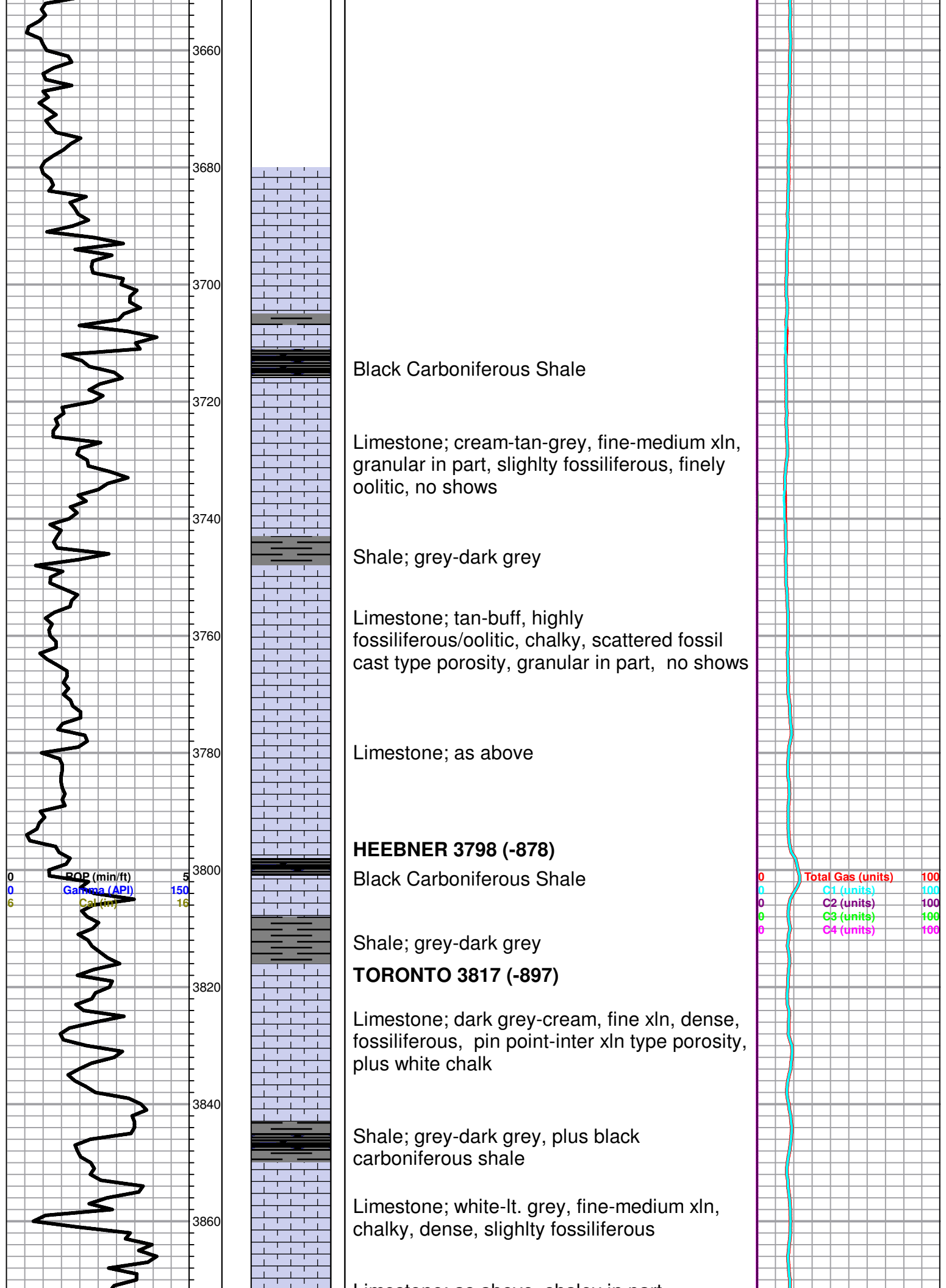
OTHER SYMBOLS

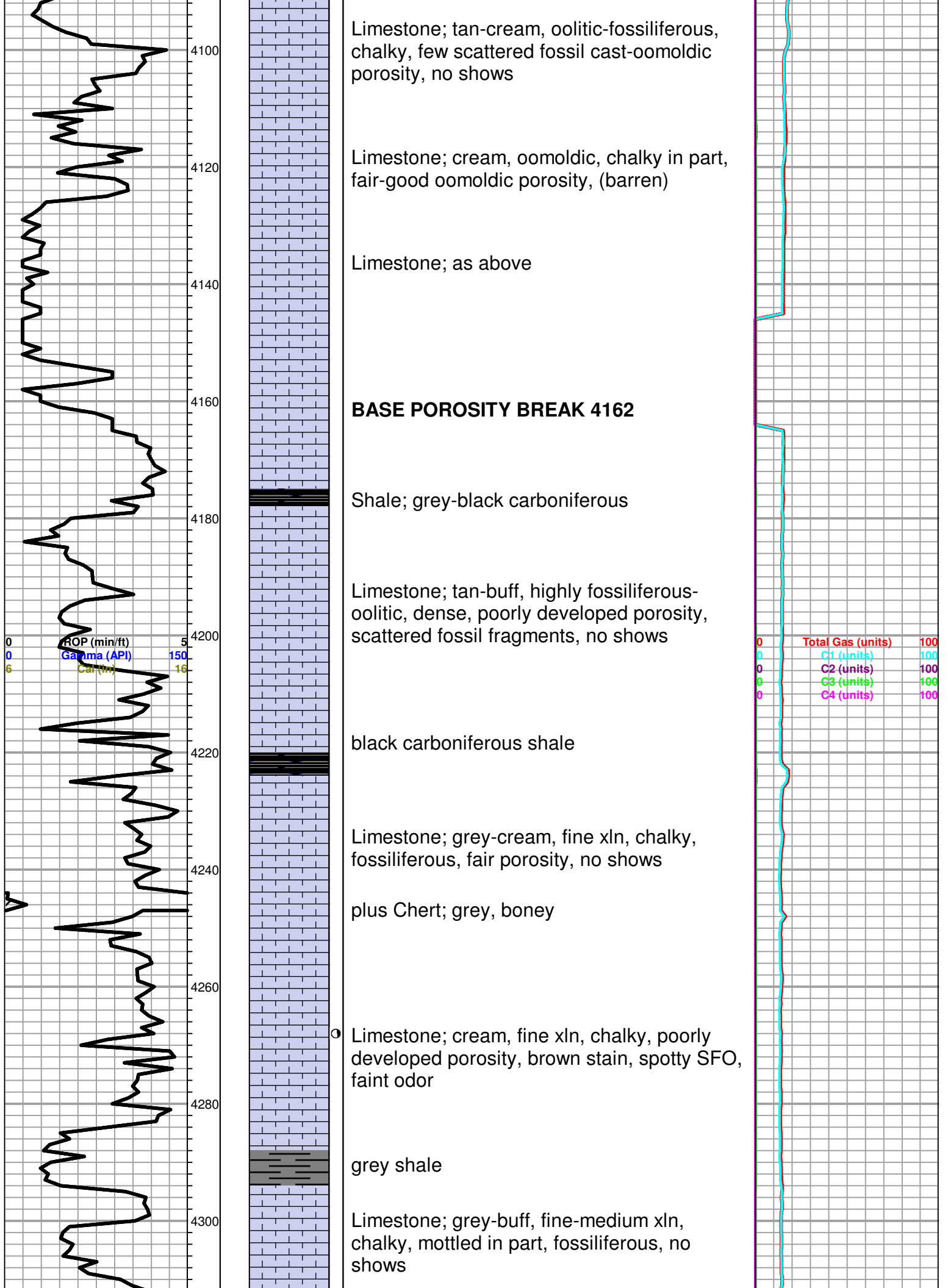
DST

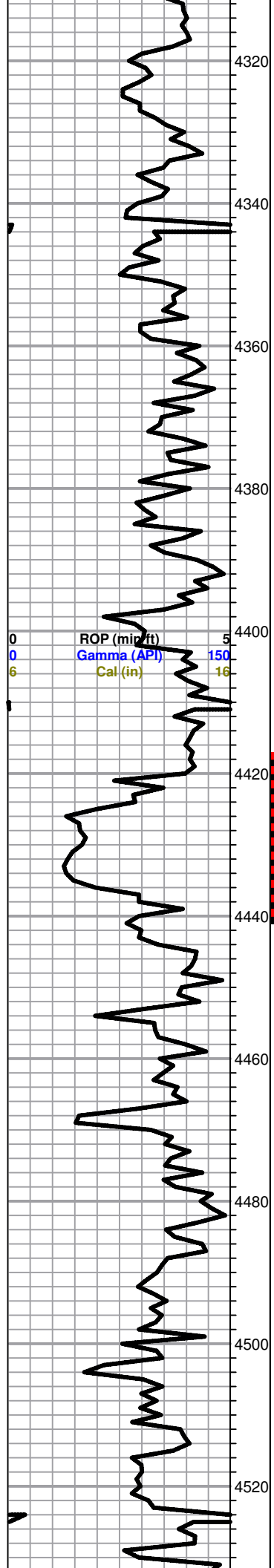
- DST Int
- DST alt
- Core
- tail pipe

Printed by GEOstrip VC Striplog version 4.0.7.0 (www.grsi.ca)









BASE KANSAS CITY 4316 (-1396)

Shale; grey-green, silty in part, few micaceous pieces

Shale; as above grey-green-maroon, soft, silty

MARMATON 4338 (-1418)

Limestone; cream-white, highly oolitic, chalky, few scattered porosity, brown-golden brown stain, SFO, faint odor

trace dark grey-black shale

Limestone; cream-tan, fine xln, dense, slightly oolitic, poorly developed porosity, no shows

Limestone; cream-buff, fine-medium xln, chalky, dense, slightly oolitic, few scattered porosity, no shows

black carboniferous Shale

PAWNEE 4420 (-1500)

Limestone; cream-tan, fine xln, slightly oolitic, inter xln porosity, spotty brown stain, trace free oil, questionable odor

black carboniferous shale

FT. SCOTT 4456 (-1536)

Limestone; grey, fine xln, fossiliferous, dense, poorly developed porosity, slightly cherty, trace brown stain, trace spotty free oil,

CHEROKEE SHALE 4467 (-1547)

black carboniferous shale

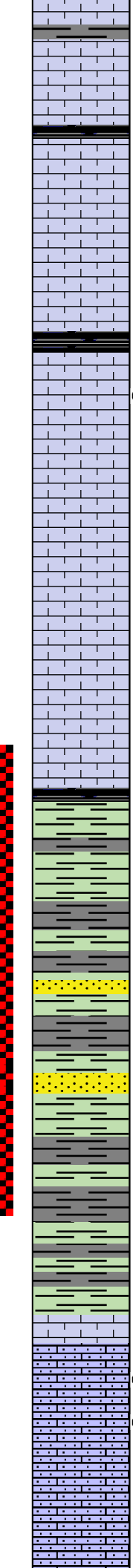
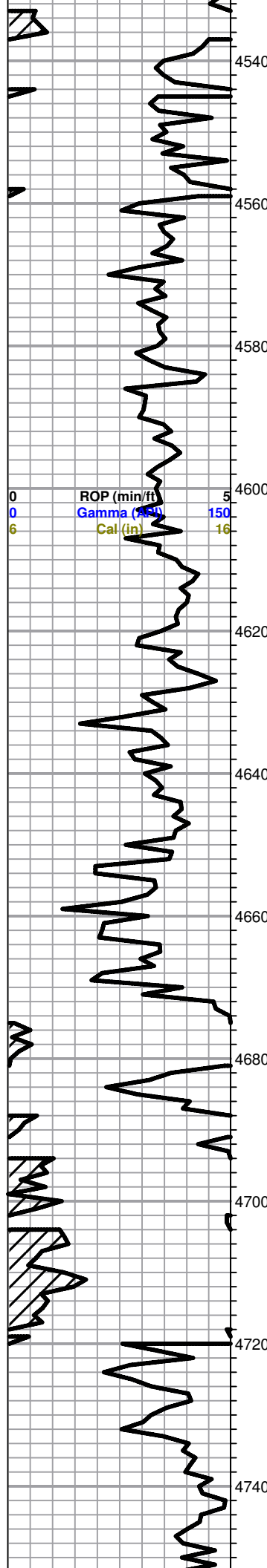
Limestone; cream-tan, fine xln, dense, poor visible porosity, plus grey-black shale

black carboniferous shale, plus grey-dark grey shale

Limestone; cream-grey, fine xln, fossiliferous, dense, no shows

trace black carboniferous shale

DST #1 4417-4440
30-45-30-45
weak
Recovery;
240' Muddy
Water w/ few oil spots
Pressures
ISIP 833
FSIP 812
IFP 36-82
FFP 91-128
HSH 2220-2175



plus chalky white-cream; Limestone

black carboniferous shale

Limestone; grey-tan, fine-medium xln, granular in part, dense, no shows

black carboniferous shale

ATOKA

Limestone; buff-tan, fine-medium xln, dense, slightly cherty, poor porosity, brown stain, slight SFO, no odor

Limestone; tan-brown, fine xln, dense, cherty, plus Chert; tan, few black boney pieces

Limestone; cream, fine xln, fossiliferous in part, chalky, dense, slightly cherty, no shows

black carboniferous shale

MORROW SHALE 4646

Shale; grey-greyish green, soft, micaceous in part, slightly glauconitic

Shale; grey-green, glauconitic, silty

Sand; green-grey, fine-very fine grained, friable, glauconitic, trace black stain, trace spotty sfo, no odor

Shale; grey-greyish green, soft, micaceous in part, slightly glauconitic

MISSISSIPPI ST. GENEVA 4716

Limestone; cream-tan, highly oolitic, granular/sandy, spotty brown stain, SFO, faint odor

Limestone; cream-lt. grey-white, chalky, granular/sandy, oolitic, no shows

0	Total Gas (units)	100
0	C1 (units)	100
0	C2 (units)	100
0	C3 (units)	100
0	C4 (units)	100

DST #2 4636-4700
 15-15-15-15
 weak-no blow
 Recovery;
 120' mud
 Pressures
 ISIP 31
 FSIP 28
 IFP 20-21
 FFP 26-26
 HSH 2305-2252

