

Sean Deenihan

Petroleum Geologist

GEOLOGIST'S REPORT DRILLING TIME AND SAMPLE LOG

COMPANY **Toto Energy, LLC**
LEASE **Binford #2-1**

FIELD _____
LOCATION **1650 FSL & 2310 FEEL**
SEC **2** TWP **28S** RGE **16W**
COUNTY **Kiowa** STATE **Kansas**

CONTRACTOR **Val Kiser #5**
SPUD **7/20/13** COMP _____
RTD **5053'** LTD **5050'**
MUD UP **3500'** TYPE MUD **Chemical**

SAMPLES SAVED FROM **3600'** TO RTD
DRILLING TIME KEPT FROM **3500'** TO RTD
SAMPLES EXAMINED FROM **3600'** TO RTD

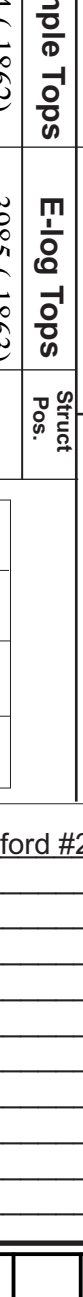
GEOLOGICAL SUPERVISION FROM **3400'**
REFERENCE WELL _____

ELEVATIONS
KB **2122'**
DF _____
GL **2111'**
Measurements Are All From Kelly Bushing

CASING
CONDUCTOR **92'**
SURFACE **871'** OF **8.63"**
PRODUCTION **5.5"** AT TD

ELECTRICAL SURVEYS

Formation	Sample Tops	E-log Tops
Heebner Sh.	3984 (-1862)	3985 (-1863)
Lansing	4154 (-2032)	4156 (-2034)
Cherokee Sh.	4622 (-2500)	4623 (-2503)
Mississippi	4718 (-2596)	4710 (-2588)
Arbuckle	4990 (-2868)	4986 (-2864)

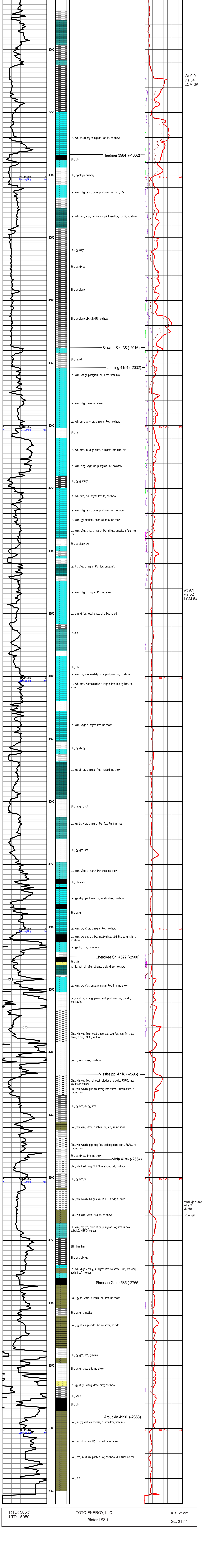


REMARKS The Binford #2-1 will be further evaluated through 5.5" casing.

Respectfully Submitted,

API #15-097-21767

Sean P. Deenihan



Wt 9.0
vis 54
LCM 3#

Wt 9.1
vis 52
LCM 6#

Mud @ 5000'
Wt 9.3
vis 60
LCM 4#

RTD: 5053'
LTD 5050'

TOTO ENERGY, LLC
Binford #2-1

KB: 2122'
GL: 2111'