



DRILL STEM TEST REPORT

Prepared For: **Kirby Krier Oil Inc**

1043 NE 80th Rd
Clafin, KS 67525

ATTN: Kurt Talbott

B. Krier #1

4-16s-12w Barton,KS

Start Date: 2013.11.16 @ 13:33:00

End Date: 2013.11.16 @ 19:28:45

Job Ticket #: 55353 DST #: 1

Trilobite Testing, Inc
PO Box 362 Hays, KS 67601
ph: 785-625-4778 fax: 785-625-5620

Printed: 2013.11.21 @ 10:27:08



**TRILOBITE
TESTING, INC**

DRILL STEM TEST REPORT

Kirby Krier Oil Inc

4-16s-12w Barton,KS

1043 NE 80th Rd
Clafin, KS 67525

B. Krier #1

Job Ticket: 55353

DST#: 1

ATTN: Kurt Talbott

Test Start: 2013.11.16 @ 13:33:00

GENERAL INFORMATION:

Formation: **LKC A & B**

Deviated: No Whipstock: ft (KB)

Time Tool Opened: 15:41:30

Time Test Ended: 19:28:45

Test Type: Conventional Bottom Hole (Initial)

Tester: Tim Phillips

Unit No: 53

Interval: 3069.00 ft (KB) To 3120.00 ft (KB) (TVD)

Reference Elevations: 1899.00 ft (KB)

Total Depth: 3120.00 ft (KB) (TVD)

1892.00 ft (CF)

Hole Diameter: 7.88 inches Hole Condition: Good

KB to GR/CF: 7.00 ft

Serial #: 6799

Inside

Press@RunDepth: 15.58 psig @ 3070.00 ft (KB)

Capacity: 8000.00 psig

Start Date: 2013.11.16

End Date:

2013.11.16

Last Calib.: 2013.11.15

Start Time: 13:33:05

End Time:

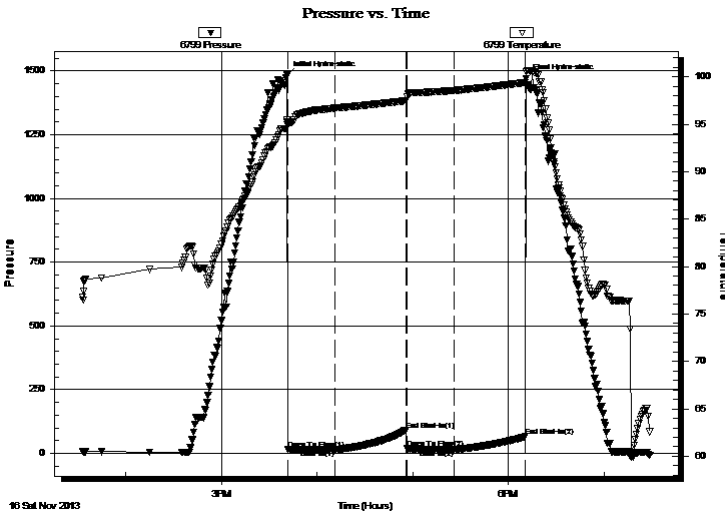
19:28:44

Time On Btm: 2013.11.16 @ 15:41:00

Time Off Btm: 2013.11.16 @ 18:11:15

TEST COMMENT: IFP-30-Weak blow built to 3 1/2"
ISI-45-Dead no blow back
FF-30-Weak blow , built to 2"
FSI-45-Dead no blow back

PRESSURE SUMMARY



Time (Min.)	Pressure (psig)	Temp (deg F)	Annotation
0	1483.45	95.21	Initial Hydro-static
1	15.04	94.89	Open To Flow (1)
30	14.79	96.69	Shut-In(1)
75	91.90	97.48	End Shut-In(1)
76	19.53	97.91	Open To Flow (2)
105	15.58	98.55	Shut-In(2)
150	66.30	99.39	End Shut-In(2)
151	1469.86	100.55	Final Hydro-static

Recovery

Length (ft)	Description	Volume (bbl)
12.00	Mud	0.17
0.00	GIP 57 ft	0.00

Gas Rates

	Choke (inches)	Pressure (psig)	Gas Rate (Mcf/d)



**TRILOBITE
TESTING, INC**

DRILL STEM TEST REPORT

TOOL DIAGRAM

Kirby Krier Oil Inc

4-16s-12w Barton,KS

1043 NE 80th Rd
Clafin, KS 67525

B. Krier #1

Job Ticket: 55353

DST#: 1

ATTN: Kurt Talbott

Test Start: 2013.11.16 @ 13:33:00

Tool Information

Drill Pipe:	Length: 3068.00 ft	Diameter: 3.80 inches	Volume: 43.04 bbl	Tool Weight: 2500.00 lb
Heavy Wt. Pipe:	Length: 0.00 ft	Diameter: 2.70 inches	Volume: 0.00 bbl	Weight set on Packer: 25000.00 lb
Drill Collar:	Length: 0.00 ft	Diameter: 2.25 inches	Volume: 0.00 bbl	Weight to Pull Loose: 47000.00 lb
			<u>Total Volume: 43.04 bbl</u>	Tool Chased 0.00 ft
Drill Pipe Above KB:	20.00 ft			String Weight: Initial 40000.00 lb
Depth to Top Packer:	3069.00 ft			Final 41000.00 lb
Depth to Bottom Packer:	ft			
Interval between Packers:	50.00 ft			
Tool Length:	71.00 ft			
Number of Packers:	1	Diameter: 6.75 inches		

Tool Comments:

Tool Description

Tool Description	Length (ft)	Serial No.	Position	Depth (ft)	Accum. Lengths
Change Over Sub	1.00			3049.00	
Shut In Tool	5.00			3054.00	
Hydraulic tool	5.00			3059.00	
Packer	5.00			3064.00	21.00 Bottom Of Top Packer
Packer	5.00			3069.00	
Stubb	1.00			3070.00	
Recorder	0.00	6799	Inside	3070.00	
Recorder	0.00	8655	Outside	3070.00	
Perforations	14.00			3084.00	
Change Over Sub	1.00			3085.00	
Drill Pipe	31.00			3116.00	
Bullnose	3.00			3119.00	50.00 Bottom Packers & Anchor

Total Tool Length: 71.00



**TRILOBITE
TESTING, INC**

DRILL STEM TEST REPORT

FLUID SUMMARY

Kirby Krier Oil Inc

4-16s-12w Barton,KS

1043 NE 80th Rd
Clafin, KS 67525

B. Krier #1

Job Ticket: 55353

DST#: 1

ATTN: Kurt Talbott

Test Start: 2013.11.16 @ 13:33:00

Mud and Cushion Information

Mud Type: Gel Chem

Cushion Type:

Oil API:

deg API

Mud Weight: 9.00 lb/gal

Cushion Length:

ft

Water Salinity:

ppm

Viscosity: 55.00 sec/qt

Cushion Volume:

bbbl

Water Loss: 7.98 in³

Gas Cushion Type:

Resistivity: ohm.m

Gas Cushion Pressure:

psig

Salinity: 5000.00 ppm

Filter Cake: 1.00 inches

Recovery Information

Recovery Table

Length ft	Description	Volume bbl
12.00	Mud	0.168
0.00	GIP 57 ft	0.000

Total Length: 12.00 ft Total Volume: 0.168 bbl

Num Fluid Samples: 0

Num Gas Bombs: 0

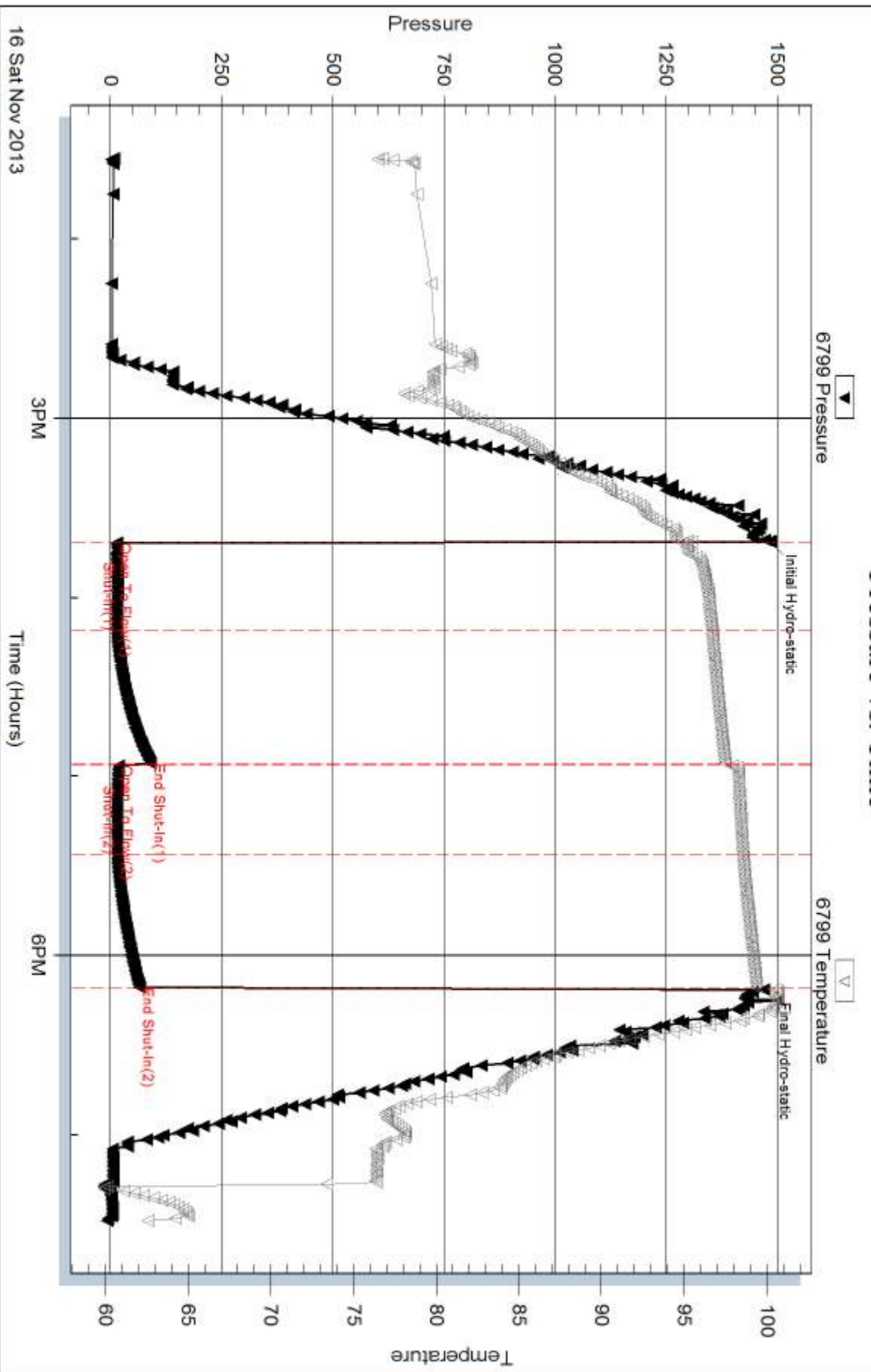
Serial #:

Laboratory Name:

Laboratory Location:

Recovery Comments:

Pressure vs. Time

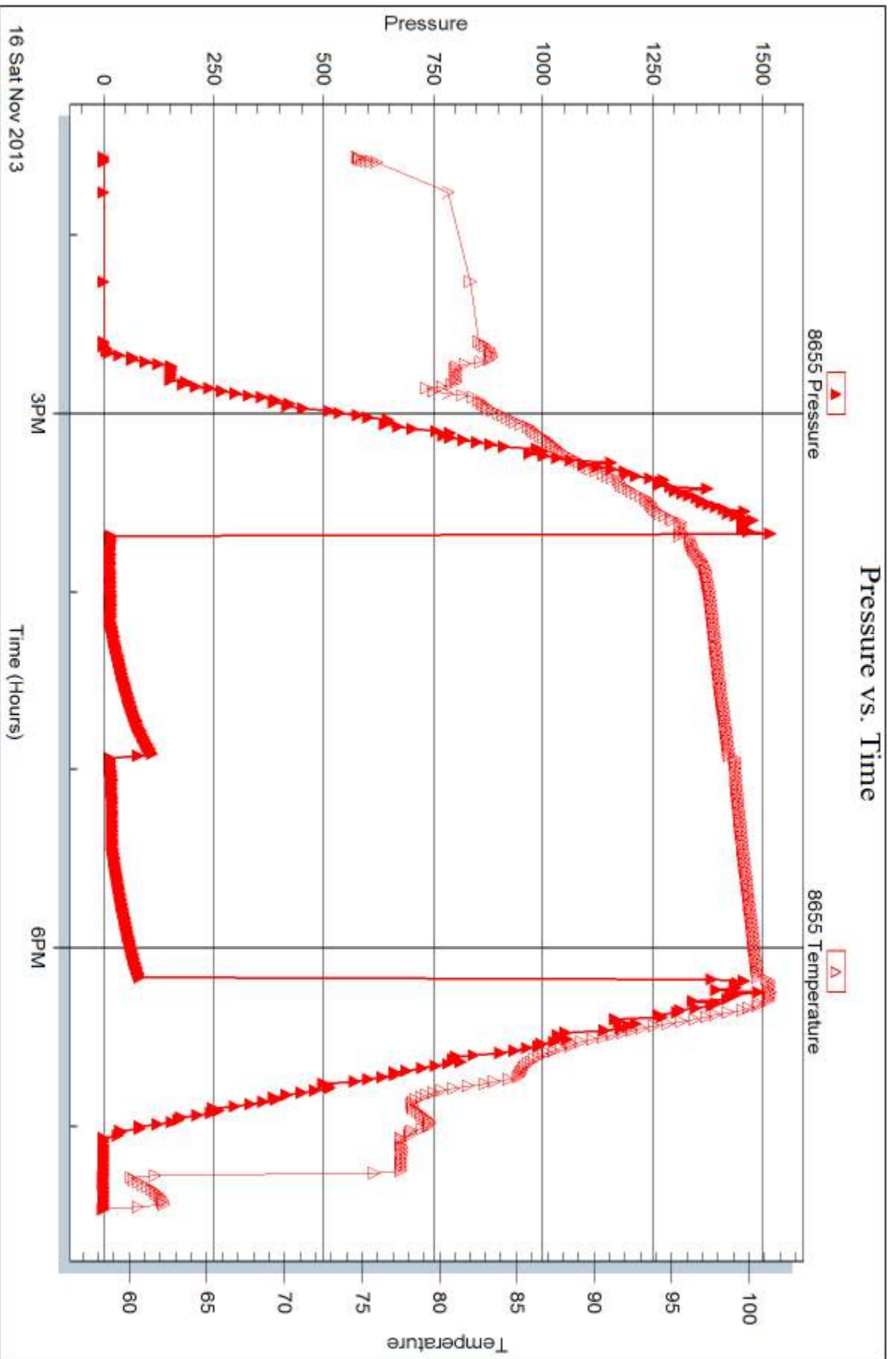


Serial #: 8655

Outside Kirby Krier Oil Inc

B. Krier #1

DST Test Number: 1



Trilobite Testing, Inc

Ref. No: 55353

Printed: 2013.11.21 @ 10:27:10



DRILL STEM TEST REPORT

Prepared For: **Kirby Krier Oil Inc**

1043 NE 80th Rd
Claffin, KS 67525

ATTN: Kurt Talbott

B. Krier #1

4-16s-12w Barton,KS

Start Date: 2013.11.17 @ 12:49:41

End Date: 2013.11.17 @ 18:04:26

Job Ticket #: 55354 DST #: 2

Trilobite Testing, Inc
PO Box 362 Hays, KS 67601
ph: 785-625-4778 fax: 785-625-5620

Printed: 2013.11.21 @ 10:25:51



**TRILOBITE
TESTING, INC**

DRILL STEM TEST REPORT

Kirby Krier Oil Inc

4-16s-12w Barton,KS

1043 NE 80th Rd
Clafin, KS 67525

B. Krier #1

Job Ticket: 55354

DST#: 2

ATTN: Kurt Talbott

Test Start: 2013.11.17 @ 12:49:41

GENERAL INFORMATION:

Formation: **LKC H-I-J**

Deviated: No Whipstock: ft (KB)

Time Tool Opened: 14:41:41

Time Test Ended: 18:04:26

Test Type: Conventional Bottom Hole (Reset)

Tester: Tim Phillips

Unit No: 53

Interval: 3202.00 ft (KB) To 3270.00 ft (KB) (TVD)

Reference Elevations: 1899.00 ft (KB)

Total Depth: 3270.00 ft (KB) (TVD)

1892.00 ft (CF)

Hole Diameter: 7.88 inches Hole Condition: Good

KB to GR/CF: 7.00 ft

Serial #: 6799

Inside

Press@RunDepth: 17.58 psig @ 3203.00 ft (KB)

Capacity: 8000.00 psig

Start Date: 2013.11.17

End Date:

2013.11.17

Last Calib.: 2013.11.16

Start Time: 12:49:46

End Time:

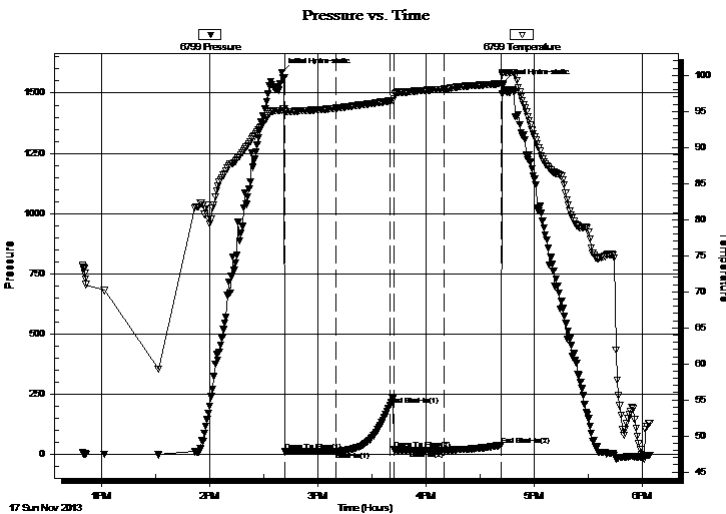
18:04:25

Time On Btm: 2013.11.17 @ 14:39:56

Time Off Btm: 2013.11.17 @ 16:42:26

TEST COMMENT: IFP-30-Weak surface blow , Built to 1/2" Died back to nothing
ISI-30-Dead no blow back
FF-30-Dead no blow
FSI-30-dead no blow back

PRESSURE SUMMARY



Time (Min.)	Pressure (psig)	Temp (deg F)	Annotation
0	1585.82	95.12	Initial Hydro-static
2	13.92	95.02	Open To Flow (1)
31	14.61	95.44	Shut-In(1)
60	206.38	96.45	End Shut-In(1)
63	22.19	96.80	Open To Flow (2)
90	17.58	98.07	Shut-In(2)
122	39.92	98.85	End Shut-In(2)
123	1538.77	100.32	Final Hydro-static

Recovery

Length (ft)	Description	Volume (bbl)
5.00	Mud 100%	0.07

* Recovery from multiple tests

Gas Rates

Choke (inches)	Pressure (psig)	Gas Rate (Mcf/d)



**TRILOBITE
TESTING, INC**

DRILL STEM TEST REPORT

Kirby Krier Oil Inc

4-16s-12w Barton,KS

1043 NE 80th Rd
Clafin, KS 67525

B. Krier #1

ATTN: Kurt Talbott

Job Ticket: 55354

DST#: 2

Test Start: 2013.11.17 @ 12:49:41

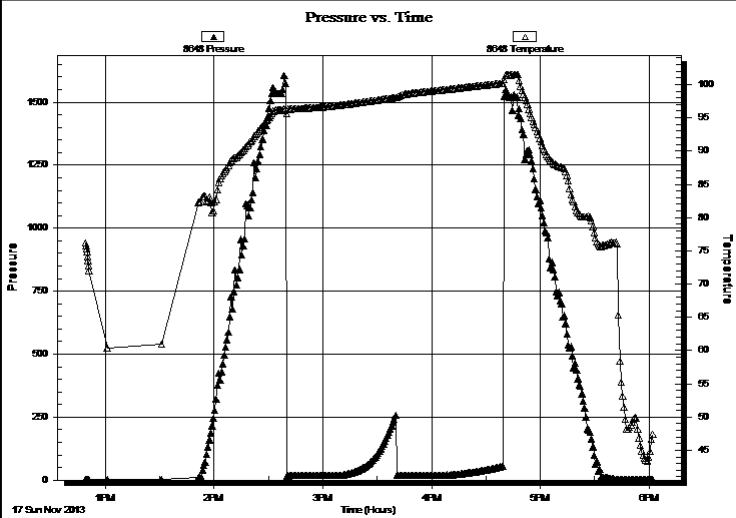
GENERAL INFORMATION:

Formation: LKC H-I-J	Deviated: No Whipstock: ft (KB)	Test Type: Conventional Bottom Hole (Reset)
Time Tool Opened: 14:41:41		Tester: Tim Phillips
Time Test Ended: 18:04:26		Unit No: 53
Interval: 3202.00 ft (KB) To 3270.00 ft (KB) (TVD)		Reference Elevations: 1899.00 ft (KB)
Total Depth: 3270.00 ft (KB) (TVD)		1892.00 ft (CF)
Hole Diameter: 7.88 inches Hole Condition: Good		KB to GR/CF: 7.00 ft

Serial #: 8648 Outside

Press@RunDepth: psig @ 3203.00 ft (KB)	Capacity: 8000.00 psig
Start Date: 2013.11.17 End Date: 2013.11.17	Last Calib.: 2013.11.16
Start Time: 12:49:15 End Time: 18:02:24	Time On Btm: Time Off Btm:

TEST COMMENT: IFP-30-Weak surface blow , Built to 1/2" Died back to nothing
ISI-30-Dead no blow back
FF-30-Dead no blow
FSI-30-dead no blow back



PRESSURE SUMMARY

Time (Min.)	Pressure (psig)	Temp (deg F)	Annotation

Recovery

Length (ft)	Description	Volume (bbl)
5.00	Mud 100%	0.07

Gas Rates

Choke (inches)	Pressure (psig)	Gas Rate (Mcf/d)

* Recovery from multiple tests



**TRILOBITE
TESTING, INC**

DRILL STEM TEST REPORT

TOOL DIAGRAM

Kirby Krier Oil Inc

4-16s-12w Barton,KS

1043 NE 80th Rd
Clafin, KS 67525

B. Krier #1

Job Ticket: 55354

DST#: 2

ATTN: Kurt Talbott

Test Start: 2013.11.17 @ 12:49:41

Tool Information

Drill Pipe:	Length: 3261.00 ft	Diameter: 3.80 inches	Volume: 45.74 bbl	Tool Weight: 2500.00 lb
Heavy Wt. Pipe:	Length: 0.00 ft	Diameter: 2.70 inches	Volume: 0.00 bbl	Weight set on Packer: 25000.00 lb
Drill Collar:	Length: 0.00 ft	Diameter: 2.25 inches	Volume: 0.00 bbl	Weight to Pull Loose: 45000.00 lb
			<u>Total Volume: 45.74 bbl</u>	Tool Chased 0.00 ft
Drill Pipe Above KB:	80.00 ft			String Weight: Initial 43000.00 lb
Depth to Top Packer:	3202.00 ft			Final 43000.00 lb
Depth to Bottom Packer:	ft			
Interval between Packers:	67.00 ft			
Tool Length:	88.00 ft			
Number of Packers:	1	Diameter: 6.75 inches		

Tool Comments:

Tool Description

Tool Description	Length (ft)	Serial No.	Position	Depth (ft)	Accum. Lengths
Change Over Sub	1.00			3182.00	
Shut In Tool	5.00			3187.00	
Hydraulic tool	5.00			3192.00	
Packer	5.00			3197.00	21.00 Bottom Of Top Packer
Packer	5.00			3202.00	
Stubb	1.00			3203.00	
Recorder	0.00	6799	Inside	3203.00	
Recorder	0.00	8648	Outside	3203.00	
Perforations	31.00			3234.00	
Change Over Sub	1.00			3235.00	
Drill Pipe	31.00			3266.00	
Bullnose	3.00			3269.00	67.00 Bottom Packers & Anchor

Total Tool Length: 88.00



**TRILOBITE
TESTING, INC**

DRILL STEM TEST REPORT

FLUID SUMMARY

Kirby Krier Oil Inc

4-16s-12w Barton,KS

1043 NE 80th Rd
Clafin, KS 67525

B. Krier #1

Job Ticket: 55354

DST#: 2

ATTN: Kurt Talbott

Test Start: 2013.11.17 @ 12:49:41

Mud and Cushion Information

Mud Type: Gel Chem

Cushion Type:

Oil API:

deg API

Mud Weight: 9.00 lb/gal

Cushion Length:

ft

Water Salinity:

ppm

Viscosity: 51.00 sec/qt

Cushion Volume:

bbbl

Water Loss: 8.18 in³

Gas Cushion Type:

Resistivity: ohm.m

Gas Cushion Pressure:

psig

Salinity: 5000.00 ppm

Filter Cake: 1.00 inches

Recovery Information

Recovery Table

Length ft	Description	Volume bbbl
5.00	Mud 100%	0.070

Total Length: 5.00 ft Total Volume: 0.070 bbl

Num Fluid Samples: 0

Num Gas Bombs: 0

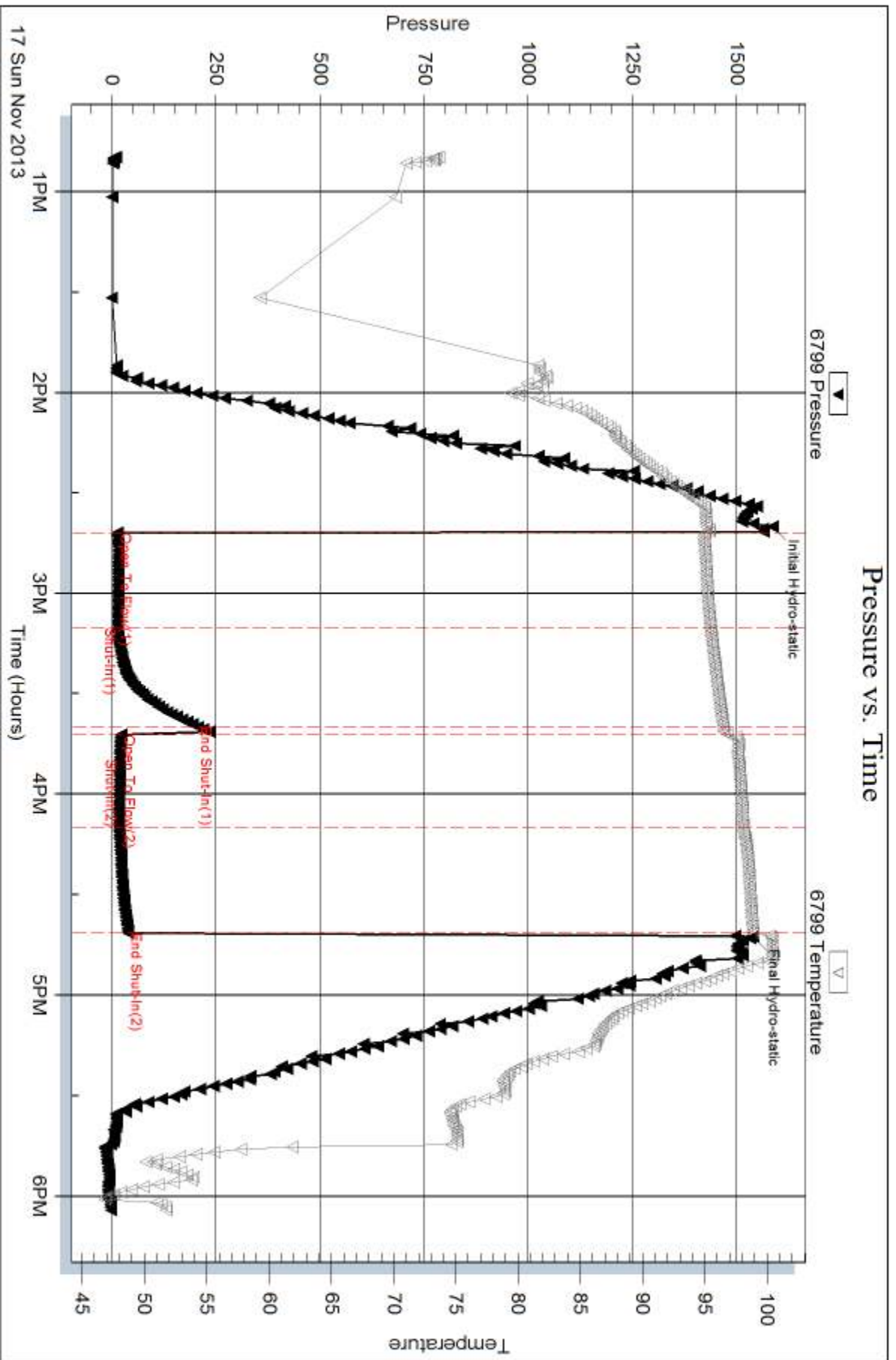
Serial #:

Laboratory Name:

Laboratory Location:

Recovery Comments:

Pressure vs. Time

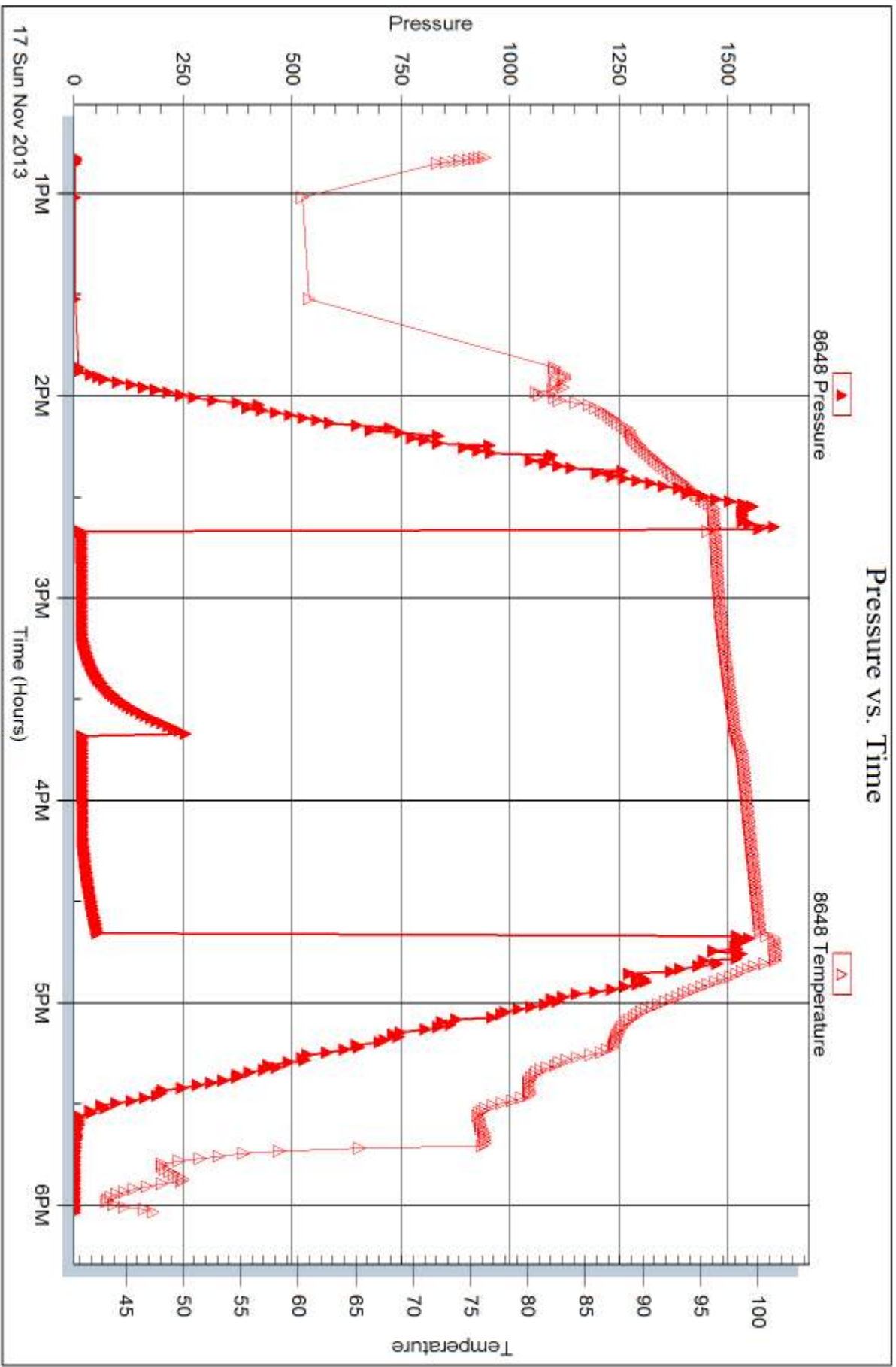


Serial #: 8648

Outside Kirby Krier Oil Inc

B. Krier #1

DST Test Number: 2





DRILL STEM TEST REPORT

Prepared For: **Kirby Krier Oil Inc**

1043 NE 80th Rd
Claffin, KS 67525

ATTN: Kurt Talbott

B. Krier #1

4-16s-12w Barton,KS

Start Date: 2013.11.18 @ 07:49:45

End Date: 2013.11.18 @ 14:55:15

Job Ticket #: 55355 DST #: 3

Trilobite Testing, Inc
PO Box 362 Hays, KS 67601
ph: 785-625-4778 fax: 785-625-5620

Printed: 2013.11.21 @ 10:24:06



TRILOBITE TESTING, INC.

DRILL STEM TEST REPORT

Kirby Krier Oil Inc

4-16s-12w Barton,KS

1043 NE 80th Rd
Clafin, KS 67525

B. Krier #1

Job Ticket: 55355

DST#: 3

ATTN: Kurt Talbott

Test Start: 2013.11.18 @ 07:49:45

GENERAL INFORMATION:

Formation: **Arbuckle**

Deviated: No Whipstock: ft (KB)

Time Tool Opened: 09:18:15

Time Test Ended: 14:55:15

Test Type: Conventional Bottom Hole (Reset)

Tester: Tim Phillips

Unit No: 53

Interval: 3316.00 ft (KB) To 3375.00 ft (KB) (TVD)

Reference Elevations: 1899.00 ft (KB)

Total Depth: 3375.00 ft (KB) (TVD)

1892.00 ft (CF)

Hole Diameter: 7.88 inches Hole Condition: Good

KB to GR/CF: 7.00 ft

Serial #: 6799

Inside

Press@RunDepth: 714.28 psig @ 3317.00 ft (KB)

Capacity: 8000.00 psig

Start Date: 2013.11.18

End Date:

2013.11.18

Last Calib.:

2013.11.17

Start Time: 07:49:50

End Time:

14:55:14

Time On Btm:

2013.11.18 @ 09:17:00

Time Off Btm:

2013.11.18 @ 11:53:30

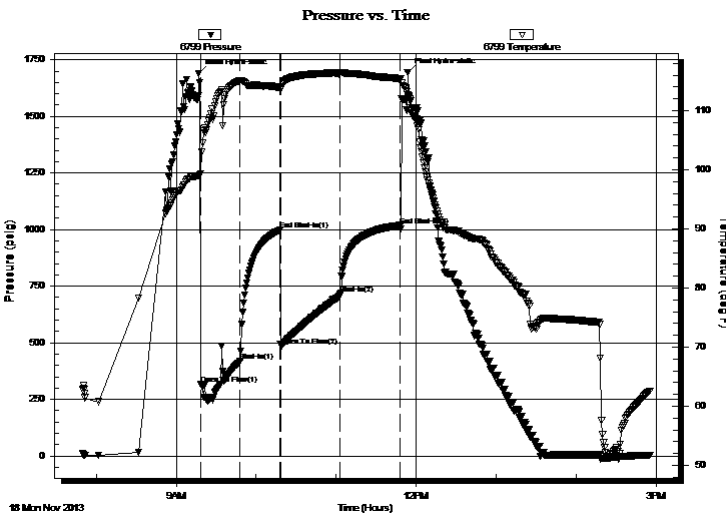
TEST COMMENT: IFP-30-Weak blow built to 2" died back, flushed tool built to 1/4" died back

ISI-30-Dead no blow back

FF-45- BOB in 45 sec.

FSI-45-Dead no blow back

PRESSURE SUMMARY



Time (Min.)	Pressure (psig)	Temp (deg F)	Annotation
0	1687.47	99.04	Initial Hydro-static
2	316.45	99.30	Open To Flow (1)
31	417.82	115.04	Shut-In(1)
61	996.88	113.92	End Shut-In(1)
62	486.68	113.71	Open To Flow (2)
106	714.28	116.42	Shut-In(2)
151	1018.71	115.39	End Shut-In(2)
157	1694.15	112.74	Final Hydro-static

Recovery

Length (ft)	Description	Volume (bbl)
1045.00	GOWCM 20% Gas, 40% Oil, 30% W, 5% M	14.66
630.00	WCM 5%O, 90% W, 5%M	8.84
0.00	GIP 57 ft	0.00

Gas Rates

Choke (inches)	Pressure (psig)	Gas Rate (Mcf/d)

* Recovery from multiple tests



**TRILOBITE
TESTING, INC**

DRILL STEM TEST REPORT

TOOL DIAGRAM

Kirby Krier Oil Inc

4-16s-12w Barton,KS

1043 NE 80th Rd
Clafin, KS 67525

B. Krier #1

Job Ticket: 55355

DST#: 3

ATTN: Kurt Talbott

Test Start: 2013.11.18 @ 07:49:45

Tool Information

Drill Pipe:	Length: 3317.00 ft	Diameter: 3.80 inches	Volume: 46.53 bbl	Tool Weight: 2500.00 lb
Heavy Wt. Pipe:	Length: 0.00 ft	Diameter: 2.70 inches	Volume: 0.00 bbl	Weight set on Packer: 25000.00 lb
Drill Collar:	Length: 0.00 ft	Diameter: 2.25 inches	Volume: 0.00 bbl	Weight to Pull Loose: lb
			<u>Total Volume: 46.53 bbl</u>	Tool Chased 0.00 ft
Drill Pipe Above KB:	22.00 ft			String Weight: Initial 46000.00 lb
Depth to Top Packer:	3316.00 ft			Final lb
Depth to Bottom Packer:	ft			
Interval between Packers:	60.00 ft			
Tool Length:	81.00 ft			
Number of Packers:	1	Diameter: 6.75 inches		

Tool Comments:

Tool Description

Tool Description	Length (ft)	Serial No.	Position	Depth (ft)	Accum. Lengths
Change Over Sub	1.00			3296.00	
Shut In Tool	5.00			3301.00	
Hydraulic tool	5.00			3306.00	
Packer	5.00			3311.00	21.00 Bottom Of Top Packer
Packer	5.00			3316.00	
Stubb	1.00			3317.00	
Recorder	0.00	6799	Inside	3317.00	
Recorder	0.00	8655	Outside	3317.00	
Perforations	24.00			3341.00	
Change Over Sub	1.00			3342.00	
Drill Pipe	31.00			3373.00	
Bullnose	3.00			3376.00	60.00 Bottom Packers & Anchor

Total Tool Length: 81.00



**TRILOBITE
TESTING, INC**

DRILL STEM TEST REPORT

FLUID SUMMARY

Kirby Krier Oil Inc

4-16s-12w Barton,KS

1043 NE 80th Rd
Clafin, KS 67525

B. Krier #1

Job Ticket: 55355

DST#: 3

ATTN: Kurt Talbott

Test Start: 2013.11.18 @ 07:49:45

Mud and Cushion Information

Mud Type: Gel Chem

Cushion Type:

Oil API:

deg API

Mud Weight: 9.00 lb/gal

Cushion Length:

ft

Water Salinity:

ppm

Viscosity: 51.00 sec/qt

Cushion Volume:

bbbl

Water Loss: 8.19 in³

Gas Cushion Type:

Resistivity: ohm.m

Gas Cushion Pressure:

psig

Salinity: 5000.00 ppm

Filter Cake: 1.00 inches

Recovery Information

Recovery Table

Length ft	Description	Volume bbl
1045.00	GOWCM 20% Gas, 40% Oil, 30% W, 5% M	14.659
630.00	WCM 5%O, 90% W, 5%M	8.837
0.00	GIP 57 ft	0.000

Total Length: 1675.00 ft Total Volume: 23.496 bbl

Num Fluid Samples: 0

Num Gas Bombs: 0

Serial #:

Laboratory Name:

Laboratory Location:

Recovery Comments:

Serial #: 6799

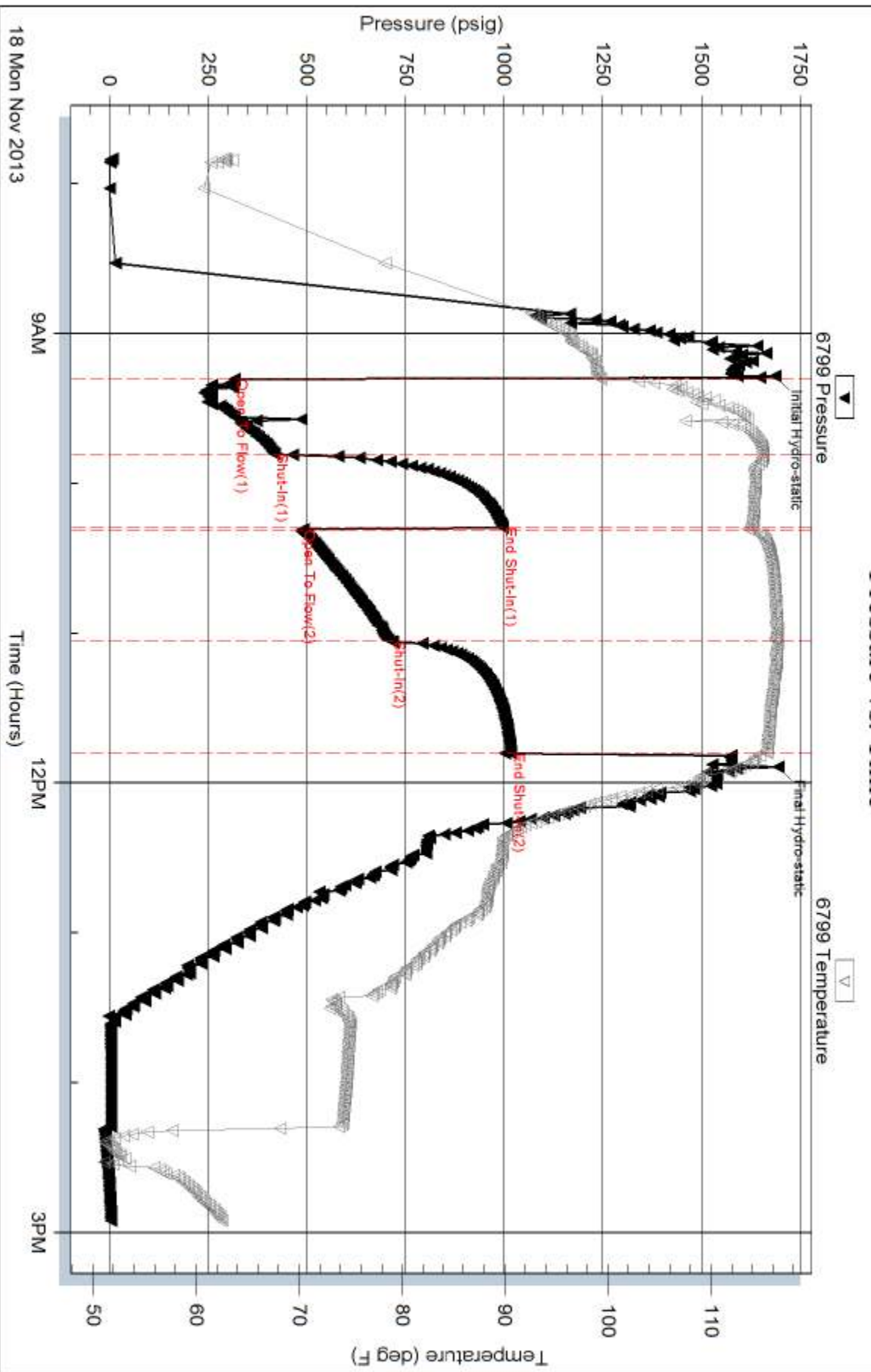
Inside

Kirby Krier Oil Inc

B. Krier #1

DST Test Number: 3

Pressure vs. Time



Trilobite Testing, Inc

Ref. No: 55355

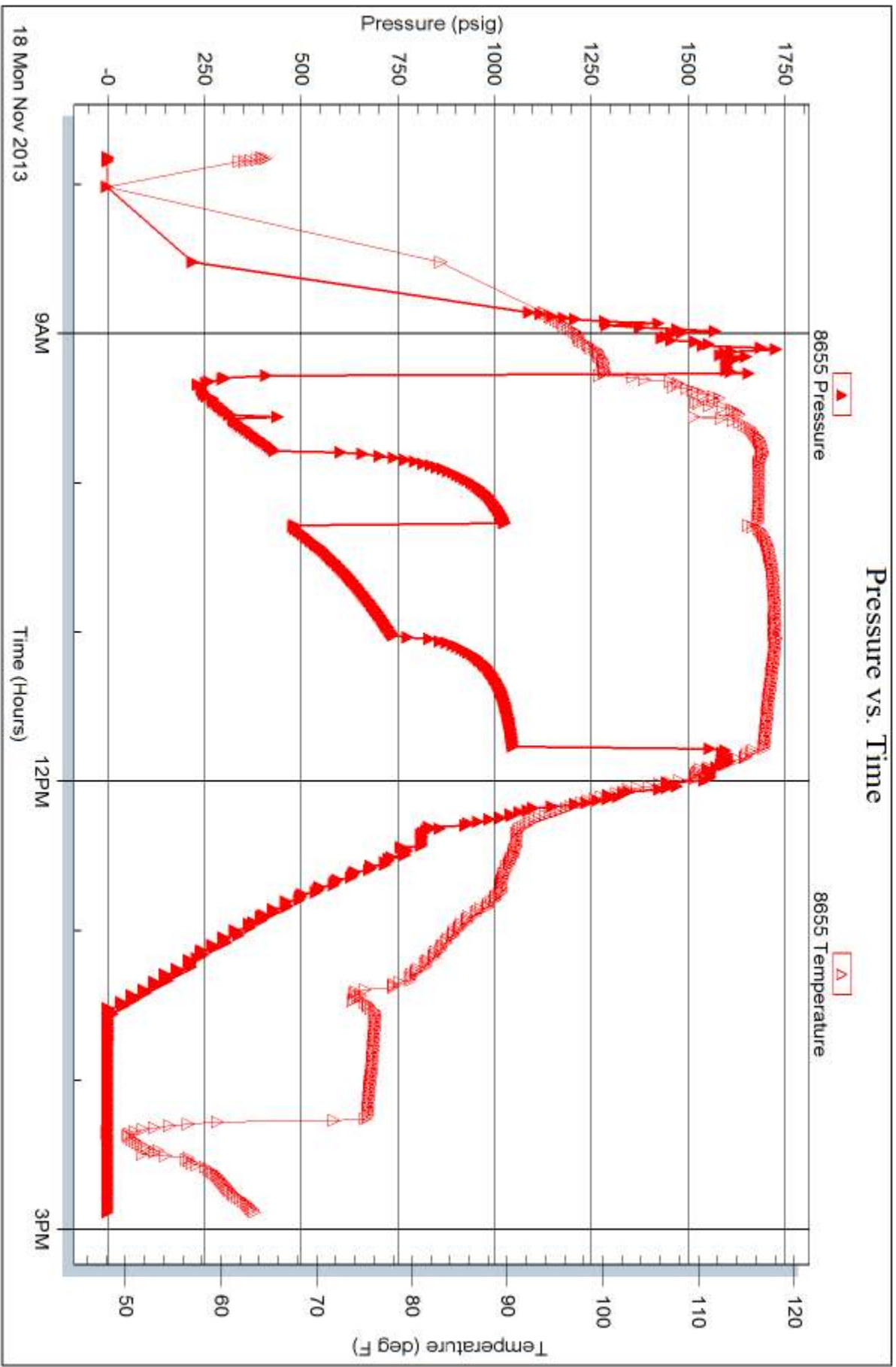
Printed: 2013.11.21 @ 10:24:08

Serial #: 8655

Outside Kirby Krier Oil Inc

B. Krier #1

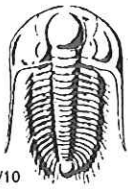
DST Test Number: 3



Tribble Testing, Inc

Ref. No: 55355

Printed: 2013.11.21 @ 10:24:08



TRILOBITE TESTING INC.

1515 Commerce Parkway • Hays, Kansas 67601

Test Ticket

NO. 55353

4/10

Well Name & No. B. Keizer #1 Test No. 1 Date 11/16/2013
 Company Kieby Keizer Oil Inc. Elevation 1899 KB 1892 GL
 Address 1043 NE 80th Rd Claflin, KS. 67525
 Co. Rep / Geo. Kurt Talbot Rig Royal Rig #1
 Location: Sec. 4 Twp. 16S Rge. 12W Co. BARTON State KS

Interval Tested 3069-3120 Zone Tested LANSING A & B
 Anchor Length 51 Drill Pipe Run 3119 3068 Mud Wt. 8.8
 Top Packer Depth 3116 3065 Drill Collars Run 0 Vis 55
 Bottom Packer Depth 3120 3069 Wt. Pipe Run 0 WL 8.0
 Total Depth 3120 Chlorides 5000 ppm System LCM 2#

Blow Description IFP-30-Weak blow built to 3.5 in
ISI-45-DEAD NO blow back
FF-30-Weak blow built to 2 in.
FSI-45-DEAD NO blow back

Rec	Feet of	%gas	%oil	%water	%mud
<u>12</u>	<u>Mud</u>			<u>100</u>	
<u>Q</u>	<u>57^{ft} GIP</u>				

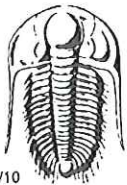
Rec Total 12 BHT 100 Gravity API RW @ F Chlorides ppm

(A) Initial Hydrostatic 1483 Test 1150 T-On Location 1213
 (B) First Initial Flow 15 Jars T-Started 1333
 (C) First Final Flow 14 Safety Joint T-Open 1541
 (D) Initial Shut-In 91 Circ Sub T-Pulled 1811
 (E) Second Initial Flow 19 Hourly Standby T-Out 1929
 (F) Second Final Flow 15 Mileage 108 R/T 167.40 Comments
 (G) Final Shut-In 66 Sampler
 (H) Final Hydrostatic 1469 Straddle Ruined Shale Packer
 Shale Packer Ruined Packer
 Extra Packer Extra Copies
 Initial Open 30 Extra Recorder Sub Total 0
 Initial Shut-In 45 Day Standby Total 1317.40
 Final Flow 30 Accessibility MP/DST Disc't
 Final Shut-In 45 Sub Total 1317.40

Approved By _____

Our Representative Sam Phillips

Trilobite Testing Inc. shall not be liable for damaged of any kind of the property or personnel of the one for whom a test is made, or for any loss suffered or sustained, directly or indirectly, through the use of its equipment, or its statements or opinion concerning the results of any test, tools lost or damaged in the hole shall be paid for at cost by the party for whom the test is made.



TRILOBITE TESTING INC.

1515 Commerce Parkway • Hays, Kansas 67601

Test Ticket

NO. 55354

4/10

Well Name & No. B. KRIER #1 Test No. 2 Date 11/17/2013
 Company Kirby Krier Oil Inc Elevation 1899 KB 1892 GL
 Address 1043 NE 80th Rd CLAFIN KS. 67525
 Co. Rep / Geo. Kurt Talbot Rig Royal Rig #2
 Location: Sec. 4 Twp. 16 S Rge. 12 W Co. BARTON State KS

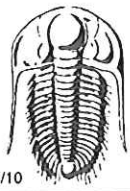
Interval Tested 3202 - 3270 Zone Tested LANSING H-I-J
 Anchor Length 68' Drill Pipe Run 3261 Mud Wt. 9.1
 Top Packer Depth 3198 Drill Collars Run 0 Vis 51
 Bottom Packer Depth 3202 Wt. Pipe Run 0 WL 8.2
 Total Depth 3270 Chlorides 5000 ppm System LCM 1.5#
 Blow Description IBP-30-weak surface blow, built to 1/2 in, died back to nothing
ISI-30-Dead no blow back
FF-30-Dead no blow
FSI-30-Dead no blow back

Rec	Feet of	%gas	%oil	%water	%mud
<u>5</u>	<u>Mud</u>			<u>100</u>	
Rec	Feet of	%gas	%oil	%water	%mud
Rec	Feet of	%gas	%oil	%water	%mud
Rec	Feet of	%gas	%oil	%water	%mud
Rec	Feet of	%gas	%oil	%water	%mud

Rec Total 5 BHT 100 Gravity _____ API RW _____ @ _____ ° F Chlorides _____ ppm

(A) Initial Hydrostatic 1585 Test 1150 T-On Location 1244
 (B) First Initial Flow 13 Jars _____ T-Started 1249
 (C) First Final Flow 14 Safety Joint _____ T-Open 1440
 (D) Initial Shut-In 206 Circ Sub _____ T-Pulled 1640
 (E) Second Initial Flow 22 Hourly Standby _____ T-Out 1803
 (F) Second Final Flow 17 Mileage 108 R/T 167.40 Comments _____
 (G) Final Shut-In 39 Sampler _____
 (H) Final Hydrostatic 1538 Straddle _____ Ruined Shale Packer _____
 Shale Packer _____ Ruined Packer _____
 Extra Packer _____ Extra Copies _____
 Initial Open 30 Extra Recorder _____ Sub Total 0
 Initial Shut-In 30 Day Standby _____ Total 1317.40
 Final Flow 30 Accessibility _____ MP/DST Disc't _____
 Final Shut-In 30 Sub Total 1317.40

Approved By _____ Our Representative Jim Phillips
 Trilobite Testing Inc. shall not be liable for damaged of any kind of the property or personnel of the one for whom a test is made, or for any loss suffered or sustained, directly or indirectly, through the use of its equipment, or its statements or opinion concerning the results of any test, tools lost or damaged in the hole shall be paid for at cost by the party for whom the test is made.



TRILOBITE TESTING INC.

1515 Commerce Parkway • Hays, Kansas 67601

Test Ticket

NO. **55355**

4/10

Well Name & No. B. Kreier Test No. 3 Date 11/18/2013
 Company Kieby Kreier Oil Inc. Elevation 1899 KB 1892 GL
 Address 1043 NE 80th Rd Claflin, KS. 67525
 Co. Rep / Geo. Kurt Talbot Rig Royal Rig #2
 Location: Sec. 4 Twp. 16S Rge. 12W Co. Barton State KS

Interval Tested 3316 - 3375 Zone Tested _____
 Anchor Length 59' Drill Pipe Run 3317 Mud Wt. 9.1
 Top Packer Depth 3312 Drill Collars Run 0 Vis 51
 Bottom Packer Depth 3316 Wt. Pipe Run 0 WL 8.2
 Total Depth 3375 Chlorides 5000 ppm System LCM 1.5[#]

Blow Description IFP-30- Weak blow built to 2in died back, flushed tool, built 1/4 in died back
ISI-30- DEAD NO blow back
FF-45- Died no blow back BOB in 45 sec
FSI-45- Dead No blow back

Rec	Feet of	%gas	%oil	%water	%mud
<u>1045</u>	<u>GOWCM</u>	<u>20</u>	<u>40</u>	<u>30</u>	<u>10</u>
<u>630</u>	<u>WCM</u>		<u>5</u>	<u>90</u>	<u>5</u>
<u>0</u>	<u>GIP 57 ft</u>				
<u>0</u>					
<u>0</u>					
<u>1675</u>	<u>BHT 115</u>	<u>Gravity -</u>	<u>API RW .40</u>	<u>@ 64.9 °F</u>	<u>Chlorides 6800 24,000 ppm</u>

(A) Initial Hydrostatic 1687 Test 1150 T-On Location 0722
 (B) First Initial Flow 316 Jars _____ T-Started 0749
 (C) First Final Flow 417 Safety Joint _____ T-Open 0918
 (D) Initial Shut-In 996 Circ Sub _____ T-Pulled 1148
 (E) Second Initial Flow 486 Hourly Standby _____ T-Out 1455
 (F) Second Final Flow 714 Mileage 108 R/T 167.40 Comments Loaded tool
 (G) Final Shut-In 1018 Sampler _____
 (H) Final Hydrostatic 1694 Straddle _____ Ruined Shale Packer _____
 Shale Packer _____ Ruined Packer _____
 Initial Open 30 Extra Packer _____ Extra Copies _____
 Initial Shut-In 30 Extra Recorder _____ Sub Total 0
 Final Flow 45 Day Standby _____ Total 1317.40
 Final Shut-In 45 Accessibility _____ MP/DST Disc't _____
 Sub Total 1317.40

Approved By _____

Our Representative

Jim Phillips

Trilobite Testing Inc. shall not be liable for damaged of any kind of the property or personnel of the one for whom a test is made, or for any loss suffered or sustained, directly or indirectly, through the use of its equipment, or its statements or opinion concerning the results of any test, tools lost or damaged in the hole shall be paid for at cost by the party for whom the test is made.