

BKC	3321 - 1412		-1416	-1416
ARBUCKLE	3333 - 1424		-1438	-1447
RTD & LTD	3340 - 1431	3339 - 1430	-1514	-1522

SUMMARY OF DAILY ACTIVITY

8-20-13 RU, work on rig

8-21-13 Work on rig, Drill rat hole, Spud @ 5:30 pm,

8-22-13 drilling, set 8 5/8" surface pipe to 395' w/225 sxs common 2% gel, 3%CC, plug down, WOC 8 hrs

8-23-13 work on rig, work on pump

8-24-13 work on rig, drill plug at 7pm.

8-25-13 790' drilling

8-26-13 1774' drilling











8-27-13 2205' drilling

8-28-13 2700' drilling

8-29-13 3145' drilling, CFS @ 3067', CFS @3256'

8-30-13 3338', CFS @ 3280', CFS @3338', work on mud pump, T.O.H. w/25 stands, drill to 3340' TD CFS. Logging

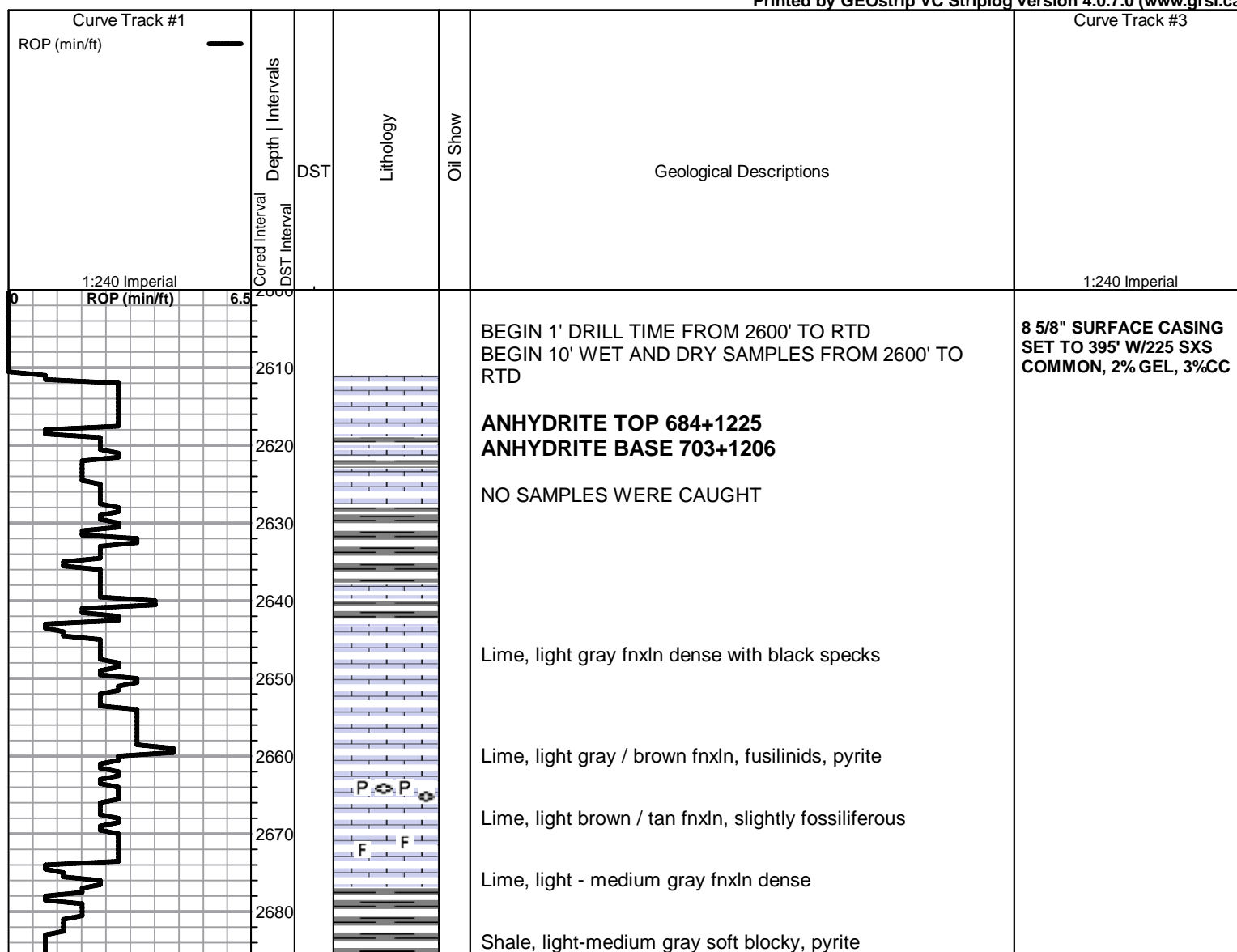
8-31-13 set 5 1/2" casing for open hole completion

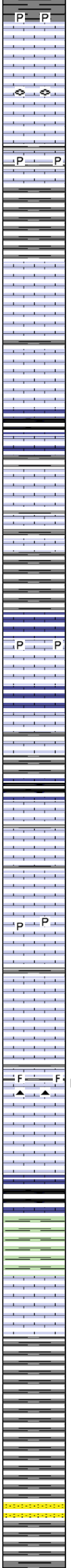
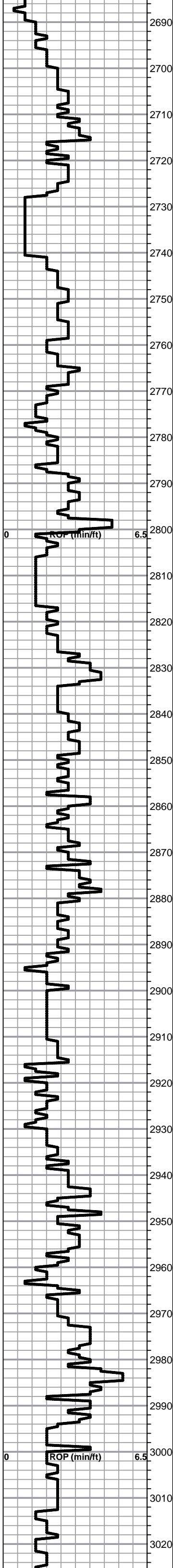
ROCK TYPES			
 Dolprim	 Lscongl	 Carbon Sh	 Ss
 Lmst fw<7	 shale, grn	 shale, red	
 Lmst fw>	 shale, gry	 Shcol	

ACCESSORIES	
MINERAL	FOSSIL
▲ Chert, dark	◇ Brachiopod
P Pyrite	F Fossils < 20%
	⊕ Fossilinid

OTHER SYMBOLS
DST
■ DST Int
■ DST alt

Printed by GEOstrip VC Striplog version 4.0.7.0 (www.grsi.ca)





Lime, light brown fnxn, fusulinids

Lime, cream-tan fnxn friable

Lime, cream / light brown fn-med xln, pyrite

Lime, cream medxln friable

Shale, medium gray soft blocky, gray wash

Shale, brown / reddish soft blocky

Lime, light brown- tan fnxn dense

Lime, medium brown fn-vfxln brittle

Shale, black carbonaceous

Lime, light gray / brown fn-vfxln dense

Lime, tan - medium brown fnxn, bedded chalk

Lime, tan-light brown fn-medxln

Shale, gray calcareous soft blocky
chalk white sticky

Lime, light-medium brown fnxn, pyrite

Lime, light gray-light brown fnxn dense

Lime, cream-light fn-vfxln brittle

Shale, light brown soft sticky gray wash

Shale, black carbonaceous waxy

Lime, light-medium brown fnxn brittle

Lime, light gray - light brown fnxn friable, pyrite

Lime, cream-tan fnxn

Lime, cream-light brown fnxn

Lime, light brown, slightly fossiliferous, easily broken,
Gilsonitic stain, gray chert

Lime, cream- light brown fnxn

Lime, light brown vfxln dense

HEEBNER SH SPL 2943' (-1034') ELOG 2937' (-
Shale, black carbonaceous

Shale, medium gray / green blocky soft

TORONTO SPL 2963' (-1054') ELOG 2957' (-1048')

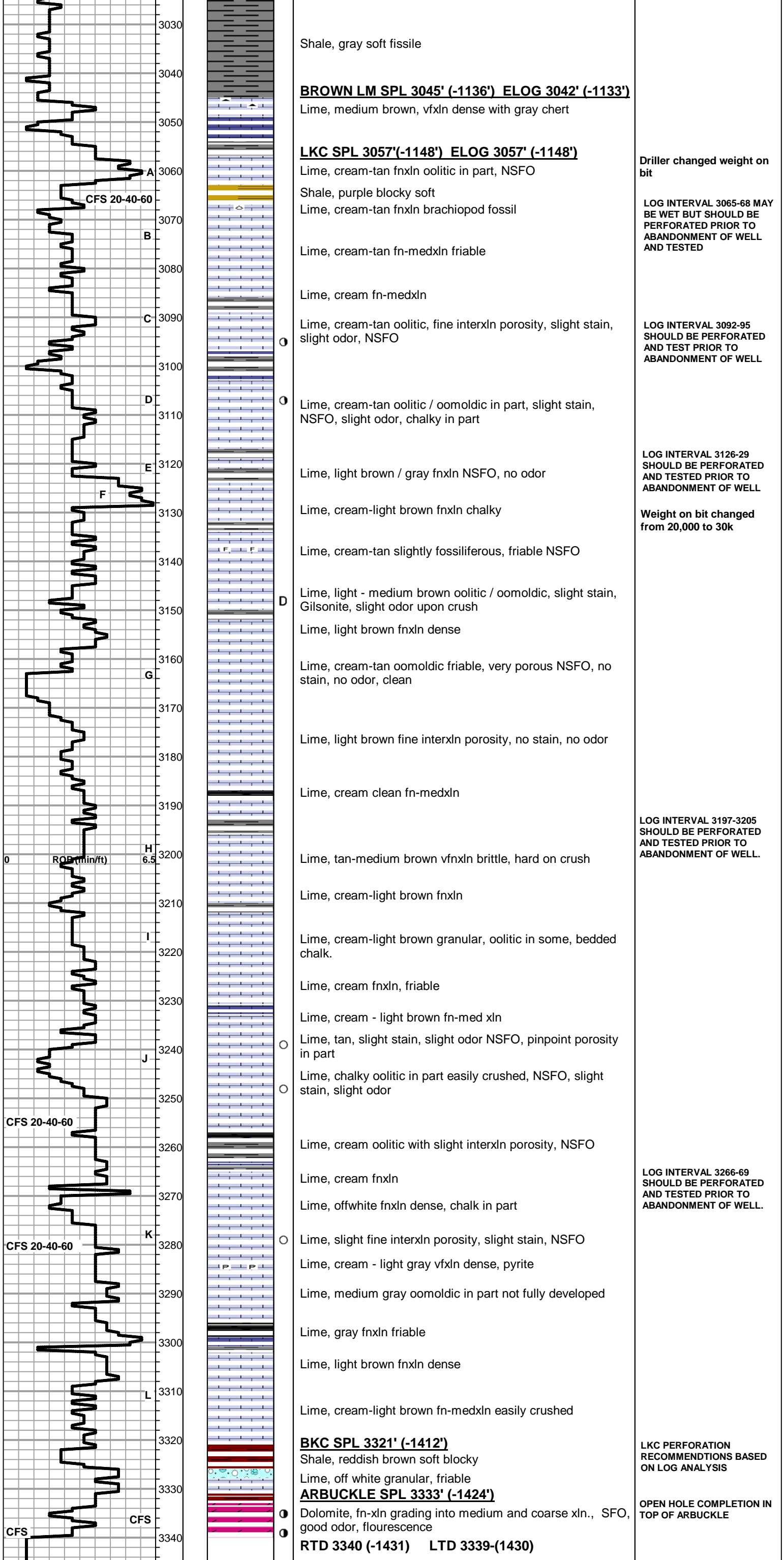
Lime, cream-offwhite fnxn dense

DOUGLAS SH SPL 2976' (-1067') ELOG 2969' (-
1060')
Shale, medium gray blocky dense

Shale, light-medium gray blocky

Shale, medium gray blocky
Sandstone, gray sucrosic low permeability shaley matrix

Shale, gray soft sticky, gray wash



Shale, gray soft fissile

BROWN LM SPL 3045' (-1136') ELOG 3042' (-1133')

Lime, medium brown, vfxln dense with gray chert

LKC SPL 3057'(-1148') ELOG 3057' (-1148')

Lime, cream-tan fnxln oolitic in part, NSFO

Shale, purple blocky soft
Lime, cream-tan fnxln brachiopod fossil

Lime, cream-tan fn-medxln friable

Lime, cream fn-medxln

Lime, cream-tan oolitic, fine interxln porosity, slight stain, slight odor, NSFO

Lime, cream-tan oolitic / oomoldic in part, slight stain, NSFO, slight odor, chalky in part

Lime, light brown / gray fnxln NSFO, no odor

Lime, cream-light brown fnxln chalky

Lime, cream-tan slightly fossiliferous, friable NSFO

Lime, light - medium brown oolitic / oomoldic, slight stain, Gilsonite, slight odor upon crush

Lime, light brown fnxln dense

Lime, cream-tan oomoldic friable, very porous NSFO, no stain, no odor, clean

Lime, light brown fine interxln porosity, no stain, no odor

Lime, cream clean fn-medxln

Lime, tan-medium brown vfxln brittle, hard on crush

Lime, cream-light brown fnxln

Lime, cream-light brown granular, oolitic in some, bedded chalk.

Lime, cream fnxln, friable

Lime, cream - light brown fn-med xln

Lime, tan, slight stain, slight odor NSFO, pinpoint porosity in part

Lime, chalky oolitic in part easily crushed, NSFO, slight stain, slight odor

Lime, cream oolitic with slight interxln porosity, NSFO

Lime, cream fnxln

Lime, offwhite fnxln dense, chalk in part

Lime, slight fine interxln porosity, slight stain, NSFO

Lime, cream - light gray vfxln dense, pyrite

Lime, medium gray oomoldic in part not fully developed

Lime, gray fnxln friable

Lime, light brown fnxln dense

Lime, cream-light brown fn-medxln easily crushed

BKC SPL 3321' (-1412')

Shale, reddish brown soft blocky

Lime, off white granular, friable

ARBUCKLE SPL 3333' (-1424')

Dolomite, fn-xln grading into medium and coarse xln., SFO, good odor, fluorescence

RTD 3340 (-1431) LTD 3339(-1430)

Driller changed weight on bit

LOG INTERVAL 3065-68 MAY BE WET BUT SHOULD BE PERFORATED PRIOR TO ABANDONMENT OF WELL AND TESTED

LOG INTERVAL 3092-95 SHOULD BE PERFORATED AND TEST PRIOR TO ABANDONMENT OF WELL

LOG INTERVAL 3126-29 SHOULD BE PERFORATED AND TESTED PRIOR TO ABANDONMENT OF WELL

Weight on bit changed from 20,000 to 30k

LOG INTERVAL 3197-3205 SHOULD BE PERFORATED AND TESTED PRIOR TO ABANDONMENT OF WELL.

LOG INTERVAL 3266-69 SHOULD BE PERFORATED AND TESTED PRIOR TO ABANDONMENT OF WELL.

LKC PERFORATION RECOMMENDATIONS BASED ON LOG ANALYSIS

OPEN HOLE COMPLETION IN TOP OF ARBUCKLE