



**TEMPORARY ABANDONMENT WELL APPLICATION**

All blanks must be complete

OPERATOR: License# \_\_\_\_\_  
 Name: \_\_\_\_\_  
 Address 1: \_\_\_\_\_  
 Address 2: \_\_\_\_\_  
 City: \_\_\_\_\_ State: \_\_\_\_\_ Zip: \_\_\_\_\_ + \_\_\_\_\_  
 Contact Person: \_\_\_\_\_  
 Phone: ( \_\_\_\_\_ ) \_\_\_\_\_  
 Contact Person Email: \_\_\_\_\_  
 Field Contact Person: \_\_\_\_\_  
 Field Contact Person Phone: ( \_\_\_\_\_ ) \_\_\_\_\_

API No. 15- \_\_\_\_\_  
 Spot Description: \_\_\_\_\_  
 \_\_\_\_\_ - \_\_\_\_\_ - \_\_\_\_\_ - \_\_\_\_\_ Sec. \_\_\_\_\_ Twp. \_\_\_\_\_ S. R. \_\_\_\_\_  E  W  
 \_\_\_\_\_ feet from  N /  S Line of Section  
 \_\_\_\_\_ feet from  E /  W Line of Section  
 GPS Location: Lat: \_\_\_\_\_, Long: \_\_\_\_\_  
(e.g. xx.xxxxx) (e.g. -xxx.xxxxx)  
 Datum:  NAD27  NAD83  WGS84  
 County: \_\_\_\_\_ Elevation: \_\_\_\_\_  GL  KB  
 Lease Name: \_\_\_\_\_ Well #: \_\_\_\_\_  
 Well Type: (check one)  Oil  Gas  OG  WSW  Other: \_\_\_\_\_  
 SWD Permit #: \_\_\_\_\_  ENHR Permit #: \_\_\_\_\_  
 Gas Storage Permit #: \_\_\_\_\_  
 Spud Date: \_\_\_\_\_ Date Shut-In: \_\_\_\_\_

	Conductor	Surface	Production	Intermediate	Liner	Tubing
Size						
Setting Depth						
Amount of Cement						
Top of Cement						
Bottom of Cement						

Casing Fluid Level from Surface: \_\_\_\_\_ How Determined? \_\_\_\_\_ Date: \_\_\_\_\_  
 Casing Squeeze(s): \_\_\_\_\_ to \_\_\_\_\_ w / \_\_\_\_\_ sacks of cement, \_\_\_\_\_ to \_\_\_\_\_ w / \_\_\_\_\_ sacks of cement. Date: \_\_\_\_\_  
(top) (bottom) (top) (bottom)  
 Do you have a valid Oil & Gas Lease?  Yes  No  
 Depth and Type:  Junk in Hole at \_\_\_\_\_  Tools in Hole at \_\_\_\_\_ Casing Leaks:  Yes  No Depth of casing leak(s): \_\_\_\_\_  
(depth) (depth)  
 Type Completion:  ALT. I  ALT. II Depth of:  DV Tool: \_\_\_\_\_ w / \_\_\_\_\_ sacks of cement  Port Collar: \_\_\_\_\_ w / \_\_\_\_\_ sack of cement  
(depth) (depth)  
 Packer Type: \_\_\_\_\_ Size: \_\_\_\_\_ Inch Set at: \_\_\_\_\_ Feet  
 Total Depth: \_\_\_\_\_ Plug Back Depth: \_\_\_\_\_ Plug Back Method: \_\_\_\_\_

**Geological Data:**

Formation Name	Formation Top	Formation Base	Completion Information
1. _____	At: _____	to _____ Feet	Perforation Interval _____ to _____ Feet or Open Hole Interval _____ to _____ Feet
2. _____	At: _____	to _____ Feet	Perforation Interval _____ to _____ Feet or Open Hole Interval _____ to _____ Feet

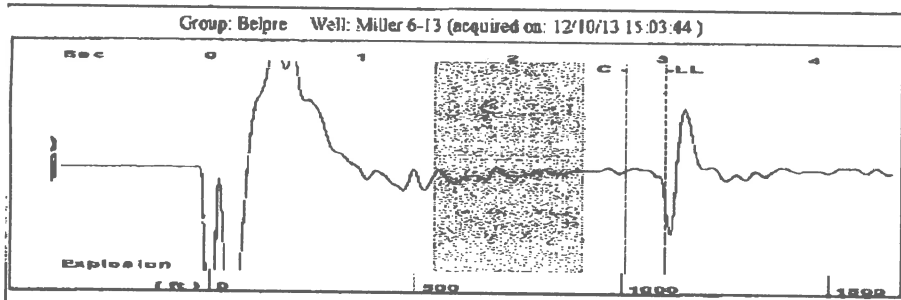
UNDER PENALTY OF PERJURY I HEREBY ATTEST THAT THE INFORMATION CONTAINED HEREIN IS TRUE AND CORRECT TO THE BEST OF MY KNOWLEDGE

Submitted Electronically

<b>Do NOT Write in This Space - KCC USE ONLY</b>	Date Tested: _____	Results: _____	Date Plugged: _____	Date Repaired: _____	Date Put Back in Service: _____
	Review Completed by: _____ Comments: _____				
TA Approved: <input type="checkbox"/> Yes <input type="checkbox"/> Denied Date: _____					

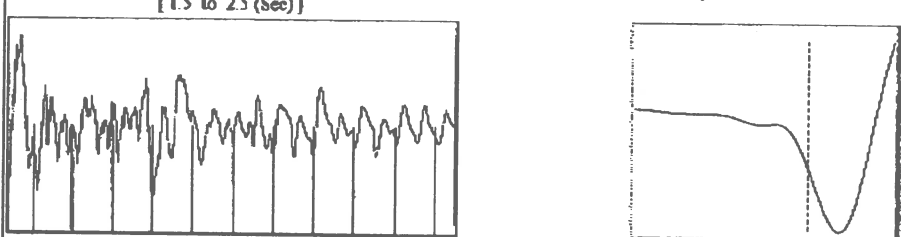
**Mail to the Appropriate KCC Conservation Office:**

	KCC District Office #1 - 210 E. Frontview, Suite A, Dodge City, KS 67801	Phone 620.225.8888
	KCC District Office #2 / UPGS - 3450 N. Rock Road, Building 600, Suite 601, Wichita, KS 67226	Phone 316.630.4000
	KCC District Office #3 - 1500 SW Seventh Steet, Chanute, KS 66720	Phone 620.432.2300
	KCC District Office #4 - 2301 E. 13th Street, Hays, KS 67601-2651	Phone 785.625.0550

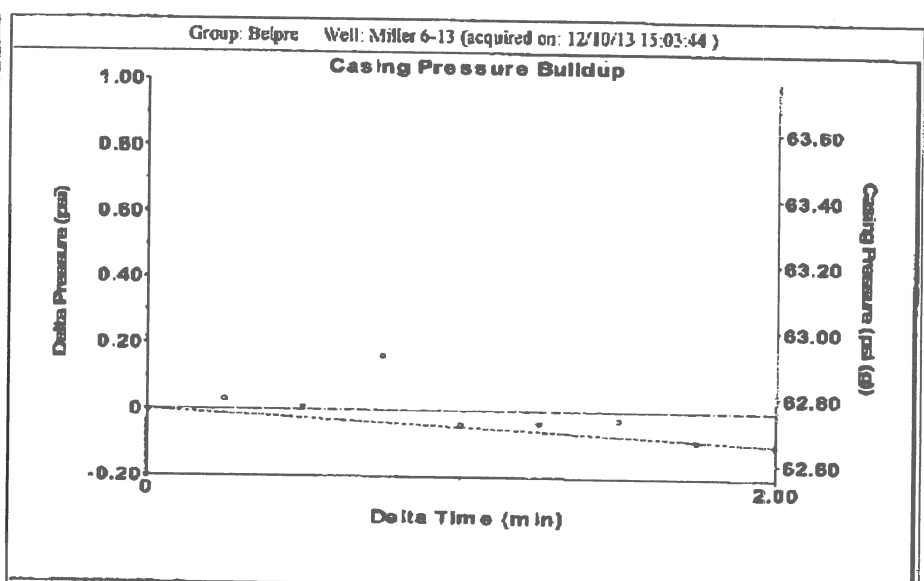


Group: Belpre Well: Miller 6-13 (acquired on: 12/10/13 15:03:44)

Filter Type	High Pass	Automatic Collar Count	Yes	Time	3.023 sec
Manual Acoustic Velo	706.013 f/s	Manual JTS/sec	11.1359	Joints	34.8178 Jts
				Depth	1103.72 ft



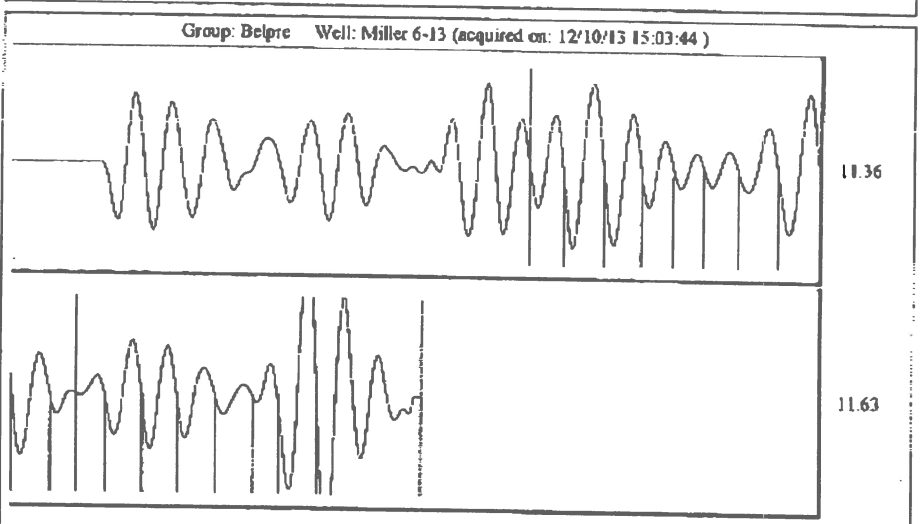
Analysis Method: Automatic



Change in Pressure	-0.10 psi	PT13440
Change in Time	2.00 min	Range
		0-? psi

Group: Belpre Well: Miller 6-13 (acquired on: 12/10/13 15:03:44)

<b>Production</b>	<b>Current</b>	<b>Potential</b>	<b>Casing Pressure</b>	<b>Producing</b>
Oil	-.-	-.- BBL/D	62.8 psi (g)	Annular Gas Flow
Water	-.-	-.- BBL/D	Casing Pressure Buildup	0 Msc/D
Gas	-.-	-.- Msc/D	-0.1 psi	% Liquid
			2.00 min	100 %
IPR Method	Vogel	Gas/Liquid Interface Pressure	66.5 psi (g)	
PBHP/SBHP	-.-	Liquid Level Depth		
Production Efficiency	0.0	1103.72 ft		
Oil	40 deg API	Pump Intake Depth		
Water	1.05 Sp.Gr.H2O	-.- ft		
Gas	1.21 Sp.Gr.AIR	Formation Depth		
Acoustic Velocity	730.217 f/s	2350.00 ft		
Formation Submergence				
Total Gaseous Liquid Column HT (TVD)		1246 ft		
Equivalent Gas Free Liquid HT (TVD)		1246 ft		
Acoustic Test				
			<b>Pump Intake</b>	
			-.- psi (g)	
			<b>Producing BHP</b>	
			633.2 psi (g)	
			<b>Static BHP</b>	
			-.- psi (g)	



Acoustic Velocity	730.217 f/s	Joints counted	17
Joints Per Second	11.5176 jts/sec	Joints to liquid level	34.8178
Depth to liquid level	1103.72 ft	Filter Width	9.13586
Automatic Collar Count	Yes	Time to 1st Collar	1.288
			13.1359
			2.764