



TEMPORARY ABANDONMENT WELL APPLICATION

All blanks must be complete

OPERATOR: License# _____
 Name: _____
 Address 1: _____
 Address 2: _____
 City: _____ State: _____ Zip: _____ + _____
 Contact Person: _____
 Phone: (_____) _____
 Contact Person Email: _____
 Field Contact Person: _____
 Field Contact Person Phone: (_____) _____

API No. 15- _____
 Spot Description: _____
 _____ - _____ - _____ - _____ Sec. _____ Twp. _____ S. R. _____ E W
 _____ feet from N / S Line of Section
 _____ feet from E / W Line of Section
 GPS Location: Lat: _____, Long: _____
(e.g. xx.xxxxx) (e.g. -xxx.xxxxx)
 Datum: NAD27 NAD83 WGS84
 County: _____ Elevation: _____ GL KB
 Lease Name: _____ Well #: _____
 Well Type: (check one) Oil Gas OG WSW Other: _____
 SWD Permit #: _____ ENHR Permit #: _____
 Gas Storage Permit #: _____
 Spud Date: _____ Date Shut-In: _____

| | Conductor | Surface | Production | Intermediate | Liner | Tubing |
|------------------|-----------|---------|------------|--------------|-------|--------|
| Size | | | | | | |
| Setting Depth | | | | | | |
| Amount of Cement | | | | | | |
| Top of Cement | | | | | | |
| Bottom of Cement | | | | | | |

Casing Fluid Level from Surface: _____ How Determined? _____ Date: _____
 Casing Squeeze(s): _____ to _____ w / _____ sacks of cement, _____ to _____ w / _____ sacks of cement. Date: _____
(top) (bottom) (top) (bottom)
 Do you have a valid Oil & Gas Lease? Yes No
 Depth and Type: Junk in Hole at _____ Tools in Hole at _____ Casing Leaks: Yes No Depth of casing leak(s): _____
(depth) (depth)
 Type Completion: ALT. I ALT. II Depth of: DV Tool: _____ w / _____ sacks of cement Port Collar: _____ w / _____ sack of cement
(depth) (depth)
 Packer Type: _____ Size: _____ Inch Set at: _____ Feet
 Total Depth: _____ Plug Back Depth: _____ Plug Back Method: _____

Geological Data:

| Formation Name | Formation Top | Formation Base | Completion Information |
|----------------|---------------|----------------|--|
| 1. _____ | At: _____ | to _____ Feet | Perforation Interval _____ to _____ Feet or Open Hole Interval _____ to _____ Feet |
| 2. _____ | At: _____ | to _____ Feet | Perforation Interval _____ to _____ Feet or Open Hole Interval _____ to _____ Feet |

UNDER PENALTY OF PERJURY I HEREBY ATTEST THAT THE INFORMATION CONTAINED HEREIN IS TRUE AND CORRECT TO THE BEST OF MY KNOWLEDGE

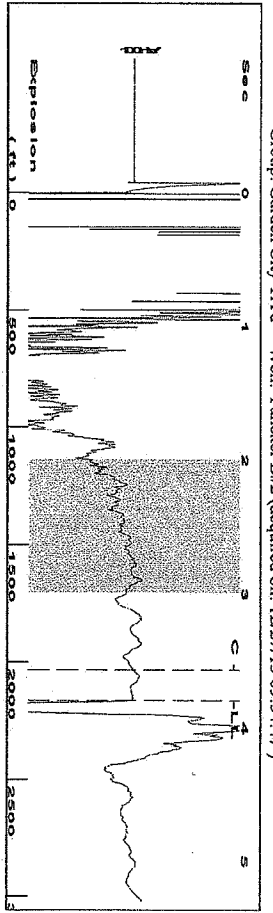
Submitted Electronically

| | | | | | |
|---|--|----------------|---------------------|----------------------|---------------------------------|
| Do NOT Write in This Space - KCC USE ONLY | Date Tested: _____ | Results: _____ | Date Plugged: _____ | Date Repaired: _____ | Date Put Back in Service: _____ |
| | Review Completed by: _____ Comments: _____ | | | | |
| TA Approved: <input type="checkbox"/> Yes <input type="checkbox"/> Denied Date: _____ | | | | | |

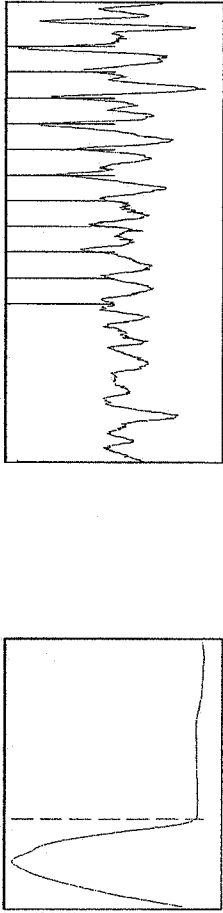
Mail to the Appropriate KCC Conservation Office:

| | | |
|--|---|--------------------|
| | KCC District Office #1 - 210 E. Frontview, Suite A, Dodge City, KS 67801 | Phone 620.225.8888 |
| | KCC District Office #2 / UPGS - 3450 N. Rock Road, Building 600, Suite 601, Wichita, KS 67226 | Phone 316.630.4000 |
| | KCC District Office #3 - 1500 SW Seventh Steet, Chanute, KS 66720 | Phone 620.432.2300 |
| | KCC District Office #4 - 2301 E. 13th Street, Hays, KS 67601-2651 | Phone 785.625.0550 |

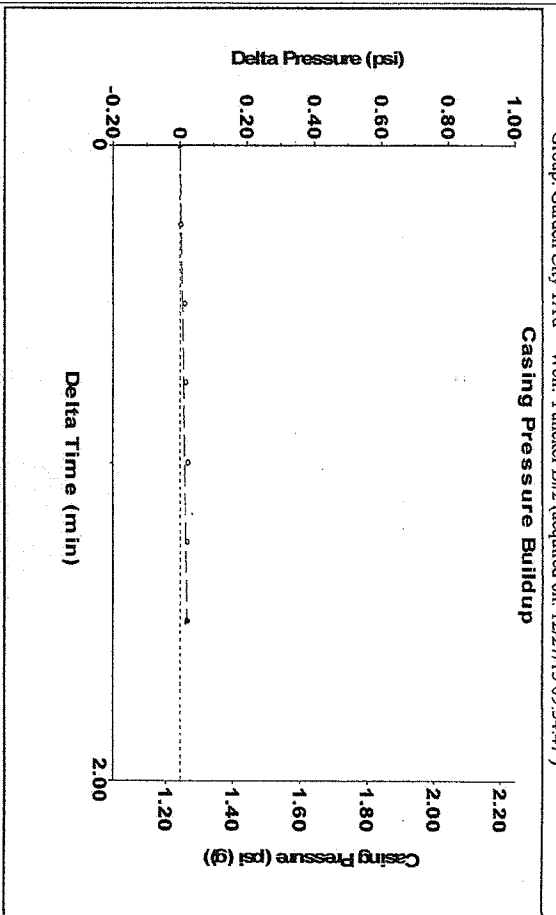
Group: Garden City TAD Well: Yunccker B#2 (acquired on: 12/27/13 09:54:47)



Filter Type High Pass Automatic Collar Count Yes
 Manual Acoustic Velo 1132.14 ft/s Manual JTS/sec 17.8571
 Time 3.797 sec
 Joints 68.3014 Jts
 Depth 2165.15 ft



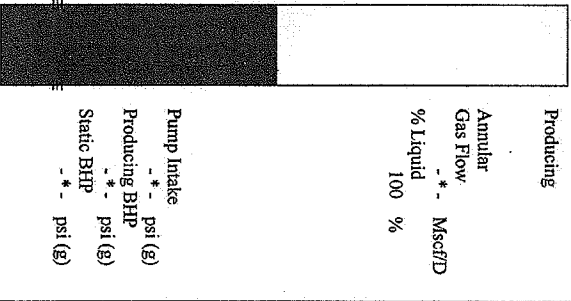
Group: Garden City TAD Well: Yunccker B#2 (acquired on: 12/27/13 09:54:47)



Change in Pressure 0.02 psi PT8746
 Change in Time 1.50 min Range 0 - ? psi

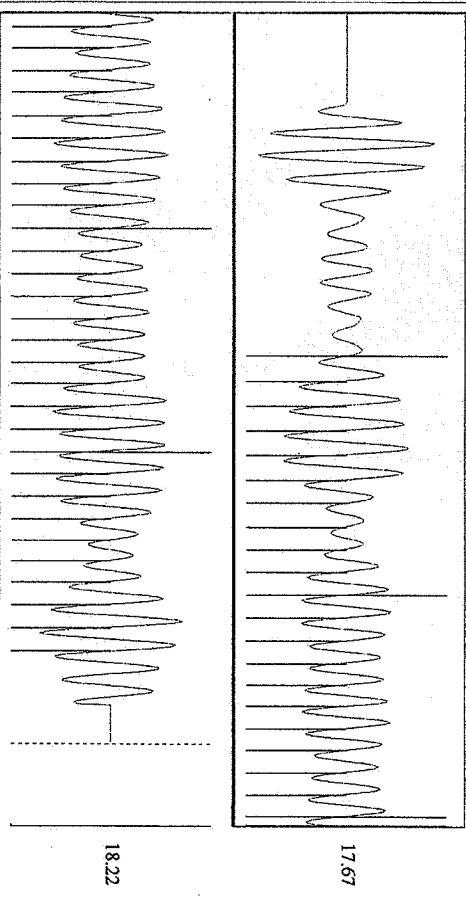
Group: Garden City TAD Well: Yunccker B#2 (acquired on: 12/27/13 09:54:47)

| | | | |
|--------------------------------------|--------------|-------------------------------|----------------------|
| Production Current | Potential | Casing Pressure | Producing |
| Oil - *- | - *- BBL/D | 1.2 psi (g) | Annular |
| Water - *- | - *- BBL/D | Casing Pressure Buildup | Gas Flow - *- Mscf/D |
| Gas - *- | - *- Mscf/D | 0.0 psi | % Liquid 100 % |
| IPR Method | Vogel | Gas/Liquid Interface Pressure | |
| PBHP/SBHP | - *- | - *- psi (g) | |
| Production Efficiency | 0.0 | Liquid Level Depth | |
| Oil 40 deg API | | 2165.15 ft | |
| Water 1.05 Sp.Gr.H2O | | Pump Intake Depth | |
| Gas 0.83 Sp.Gr.AIR | | - *- ft | |
| Acoustic Velocity | 1140.46 ft/s | Formation Depth | |
| | | 4200.00 ft | |
| Formation Submergence | | | |
| Total Gaseous Liquid Column HT (TYD) | | | |
| Equivalent Gas Free Liquid HT (TYD) | | | |
| Acoustic Test | | | |



Casing Pressure Buildup

Group: Garden City TAD Well: Yunccker B#2 (acquired on: 12/27/13 09:54:47)



Acoustic Velocity 1140.46 ft/s Joints counted 49
 Joints Per Second 17.9883 Jts/sec Joints to liquid level 68.3014
 Depth to liquid level 2165.15 ft Filter Width 15.8571
 Automatic Collar Count Yes Time to 1st Collar 3.568

Conservation Division
District Office No. 1
210 E. Frontview, Suite A
Dodge City, KS 67801



Phone: 620-225-8888
Fax: 620-225-8885
<http://kcc.ks.gov/>

Mark Sievers, Chairman
Thomas E. Wright, Commissioner
Shari Feist Albrecht, Commissioner

Sam Brownback, Governor

January 02, 2014

Matt Ogden
Merit Energy Company, LLC
13727 NOEL RD STE 1200
DALLAS, TX 75240

Re: Temporary Abandonment
API 15-081-20854-00-01
YUNCKER B 2
SE/4 Sec.14-29S-34W
Haskell County, Kansas

Dear Matt Ogden:

Your application for Temporary Abandonment (TA) of the above-listed well is denied for the following reasons(s):

Shut-in Over 10 years

In accordance with K.A.R. 82-3-111, this well must be plugged or returned to service by February 01, 2014.

You may file an application for an exception to the 10-year limitation in K.A.R. 82-3-111 to demonstrate why it is necessary to TA the above well for more than (10) years. You must notify the Commission in writing no later than February 01, 2014 of your intention to file the application, and your complete application is due March 03, 2014. All applications and written notifications must be sent to the attention of the Executive Director at the Kansas Corporation Commission Conservation Division at 130 South Market, Room 2078, Wichita, Kansas 67202.

You may contact me at the number above if you have any questions.

Sincerely,

Eric MacLaren