



TEMPORARY ABANDONMENT WELL APPLICATION

All blanks must be complete

OPERATOR: License# _____
 Name: _____
 Address 1: _____
 Address 2: _____
 City: _____ State: _____ Zip: _____ + _____
 Contact Person: _____
 Phone: (_____) _____
 Contact Person Email: _____
 Field Contact Person: _____
 Field Contact Person Phone: (_____) _____

API No. 15- _____
 Spot Description: _____
 _____ - _____ - _____ - _____ Sec. _____ Twp. _____ S. R. _____ E W
 _____ feet from N / S Line of Section
 _____ feet from E / W Line of Section
 GPS Location: Lat: _____, Long: _____
(e.g. xx.xxxxx) (e.g. -xxx.xxxxx)
 Datum: NAD27 NAD83 WGS84
 County: _____ Elevation: _____ GL KB
 Lease Name: _____ Well #: _____
 Well Type: (check one) Oil Gas OG WSW Other: _____
 SWD Permit #: _____ ENHR Permit #: _____
 Gas Storage Permit #: _____
 Spud Date: _____ Date Shut-In: _____

	Conductor	Surface	Production	Intermediate	Liner	Tubing
Size						
Setting Depth						
Amount of Cement						
Top of Cement						
Bottom of Cement						

Casing Fluid Level from Surface: _____ How Determined? _____ Date: _____
 Casing Squeeze(s): _____ to _____ w / _____ sacks of cement, _____ to _____ w / _____ sacks of cement. Date: _____
(top) (bottom) (top) (bottom)
 Do you have a valid Oil & Gas Lease? Yes No
 Depth and Type: Junk in Hole at _____ Tools in Hole at _____ Casing Leaks: Yes No Depth of casing leak(s): _____
(depth) (depth)
 Type Completion: ALT. I ALT. II Depth of: DV Tool: _____ w / _____ sacks of cement Port Collar: _____ w / _____ sack of cement
(depth) (depth)
 Packer Type: _____ Size: _____ Inch Set at: _____ Feet
 Total Depth: _____ Plug Back Depth: _____ Plug Back Method: _____

Geological Data:

Formation Name	Formation Top	Formation Base	Completion Information
1. _____	At: _____	to _____ Feet	Perforation Interval _____ to _____ Feet or Open Hole Interval _____ to _____ Feet
2. _____	At: _____	to _____ Feet	Perforation Interval _____ to _____ Feet or Open Hole Interval _____ to _____ Feet

UNDER PENALTY OF PERJURY I HEREBY ATTEST THAT THE INFORMATION CONTAINED HEREIN IS TRUE AND CORRECT TO THE BEST OF MY KNOWLEDGE

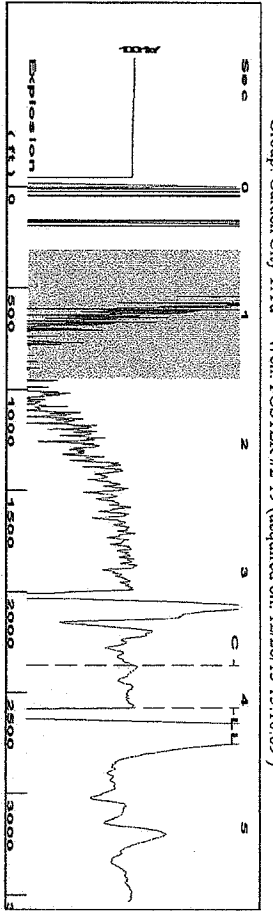
Submitted Electronically

Do NOT Write in This Space - KCC USE ONLY	Date Tested: _____	Results: _____	Date Plugged: _____	Date Repaired: _____	Date Put Back in Service: _____
	Review Completed by: _____ Comments: _____				
TA Approved: <input type="checkbox"/> Yes <input type="checkbox"/> Denied Date: _____					

Mail to the Appropriate KCC Conservation Office:

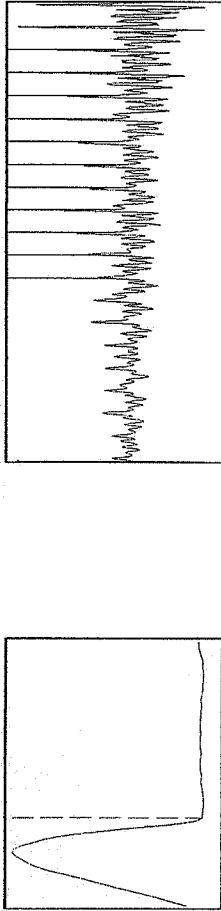
	KCC District Office #1 - 210 E. Frontview, Suite A, Dodge City, KS 67801	Phone 620.225.8888
	KCC District Office #2 / UPGS - 3450 N. Rock Road, Building 600, Suite 601, Wichita, KS 67226	Phone 316.630.4000
	KCC District Office #3 - 1500 SW Seventh Steet, Chanute, KS 66720	Phone 620.432.2300
	KCC District Office #4 - 2301 E. 13th Street, Hays, KS 67601-2651	Phone 785.625.0550

Group: Garden City TAD Well: FOSTER #2-19 (acquired on: 12/26/13 15:10:09)



Filter Type High Pass Automatic Collar Count Yes Time 4.064 sec
 Manual Acoustic Velo 1273.09 ft/s Manual JTS/sec 20.0803 Joints 81.2329 Jts
 Depth 2575.08 ft

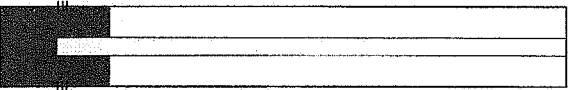
[0.5 to 1.5 (Sec)]



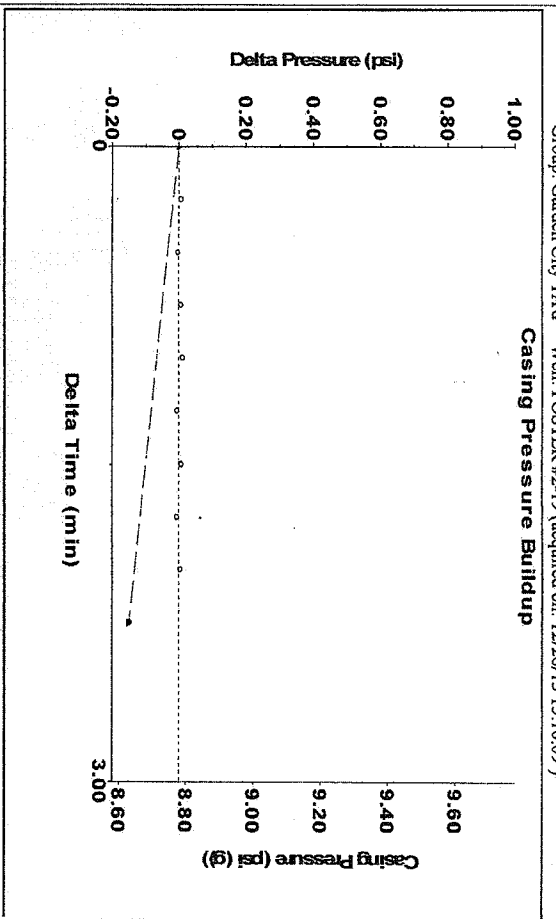
Analysis Method: Automatic

Group: Garden City TAD Well: FOSTER #2-19 (acquired on: 12/26/13 15:10:09)

Production Current	Potential	Casing Pressure	Producing
Oil 0	0.0	8.8 psi (g)	Annular Gas Flow 0 Mscf/D
Water 56	260.4	Casing Pressure Buildup -0.1 psi	% Liquid 100 %
Gas 0.0	0.0	Mscf/D 2.25	
IPR Method PPHP/SBHP	Vogel 0.87	Gas/Liquid Interface Pressure 10.3 psi (g)	
Production Efficiency 21.5		Liquid Level Depth 2575.08 ft	
Oil 40 deg API		Pump Intake 165.3 psi (g)	
Water 1.05 Sp.Gr.H2O		Producing BHP 148.5 psi (g)	
Gas 0.74 Sp.Gr.AIR		Static BHP 172.1 psi (g)	
Acoustic Velocity 1267.27 ft/s	Formation Depth 2879.00 ft		
Formation Submergence 341 ft			
Total Gaseous Liquid Column HT (TVD) 341 ft			
Equivalent Gas Free Liquid HT (TVD)			

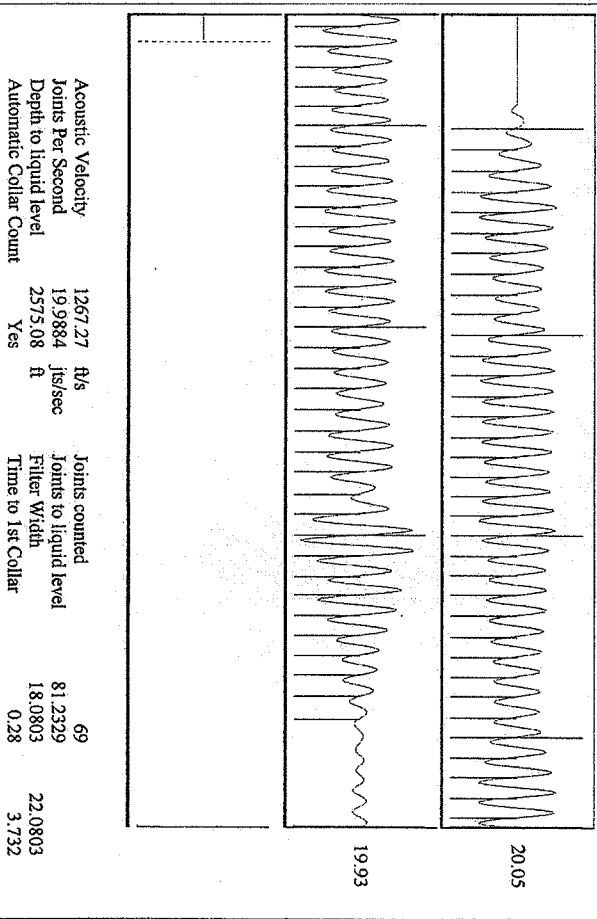


Group: Garden City TAD Well: FOSTER #2-19 (acquired on: 12/26/13 15:10:09)



Change in Pressure -0.15 psi PT8746
 Change in Time 2.25 min Range 0 - ? psi

Group: Garden City TAD Well: FOSTER #2-19 (acquired on: 12/26/13 15:10:09)



Acoustic Velocity 1267.27 ft/s Joints counted 69
 Joints Per Second 19.9884 Jts/sec Joints to liquid level 81.2329
 Depth to liquid level 2575.08 ft Filter Width 18.0803
 Automatic Collar Count Yes Time to 1st Collar 3.732