

GEOLOGIST'S REPORT

DRILLING TIME AND SAMPLE LOG

COMPANY: **Richie Exploration Inc.**
 LEASE: **#11767 29A**
 FIELD: **Wickard**
 SECTION: **W2 NE**
 COUNTY: **Goos** TOWNSHIP: **12** RANGE: **28W**
 STATE: **KS**

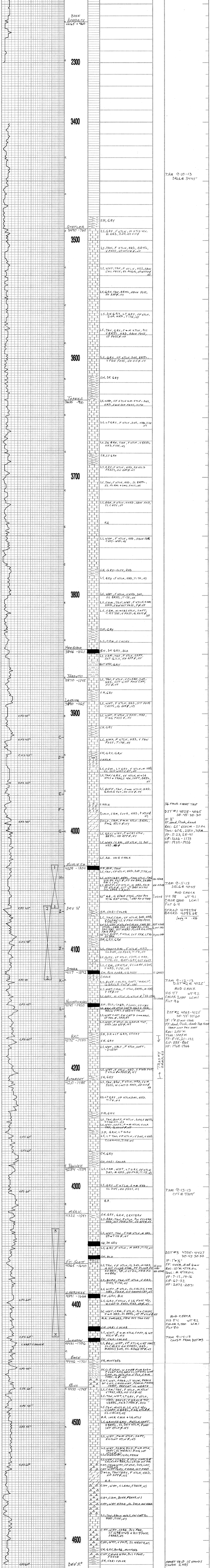
BLK: **2735**
 DEPT: **2720**
 MEASURED ARE A: **All**

CONTRACTOR: **WV #2**
 WELLS: **WV #2**
 RFD: **4920** LTD: **4921**
 SPID: **9-7-2013** COMP: **9-15-2012**
 MUD UP: **9-13** TYPE MUD: **Chem**

FORMATION	SAMPLE TOP	ELECTRIC LOG TOP	SUB-SEA DATA	STRUCTURAL POSITION		
				A	B	C
ANKHILITE	2226	2228	2228	489	501	485
BRN MUDSHALE	2245	2245	2245	482	482	483
SHALE	2245	2245	2245	482	482	483
LEANSBUR	3460	3460	3460	1125	1125	1125
LEANSBUR	3460	3460	3460	1125	1125	1125
MUSKOGEE	3460	3460	3460	1125	1125	1125
SHERBORN	4029	4029	4029	1302	1302	1302
WATER	4175	4175	4175	1417	1417	1417
WATER	4175	4175	4175	1417	1417	1417
WATER	4294	4294	4294	1454	1454	1454
WATER	4385	4385	4385	1465	1465	1465
WATER	4385	4385	4385	1465	1465	1465
WATER	4385	4385	4385	1465	1465	1465
MISSISSIPPI	4410	4410	4410	1481	1481	1481
MISSISSIPPI	4410	4410	4410	1481	1481	1481

REMARKS:

LEGEND



7:AM 9-10-13 DRLG@ 3445'

36 SAND SHORT TRIP
 DST #1 4028-4065
 30.45' 30-30
 IF: 1/2"
 FF: dead, flush, dead
 REC: 65' VSDCM - 2% OIL
 TOOL: 61.6, 2310, 711M
 FP: 5-23, 28-41
 SP: 122.6 - 1173
 HP: 1932-1926

7:AM 9-11-13
 MUD CHECK
 VIS 58 WT 9.1
 CHLOR 2900 LCM1
 FILT 6.4
 STRAD 4093.94
 BOARD 4093.68
 Lorig → .26

7:AM 9-12-13
 DST #2 4063-4125
 30.45' 45' 60'
 IF: 1" @ 10 WH-STAR
 FF: dead, flush, dead, We RUSH
 TRMP: lost PDS seat
 Rec: 250'M
 Tool: 100X'M
 FP: 8-18, 20-132
 SIP: 885-865
 HP: 1968-1966

7:AM 9-13-13
 CFS @ 4304'

DST #3 4335-4427
 30.45' 30-30
 IF: 1 1/2"
 FF: VWSB, dead 6m w
 REC: 10 m w/ TR OIL
 Tool: M w/ TR OIL
 FP: 7-12, 14-16
 SP: 167-32
 HP: 2072-2071

Mud CHECK
 VIS 54 WT 9.2
 CHLOR 2,500 LCM1
 FILT 8.0

7:AM 9-14-13
 COND # FROM DST #3

SHORT TRIP 15 STANDS
 CONDE 2 HRS