

LINN OPERATING INC. O.V. MARTIN #4 ATU-187  
 190' FNL  
 130' FEL  
 NE/4 OF NE/4 OF NE/4 OF NE/4 OF  
 SECTION 7, T-26-S, R-38-W  
 LATITUDE: 37°48'30.81072" N  
 LONGITUDE: 101°30'35.41961" W  
 GROUND ELEVATION: 3263.6'



Keller  
 Surveying &  
 Mapping

2330 B LAKEVIEW DRIVE  
 AMARILLO, TEXAS 79109  
 PH: (808) 418-6263

DRAWN BY: MTK

APPROVED BY: JJK

SCALE: 1" = 200'

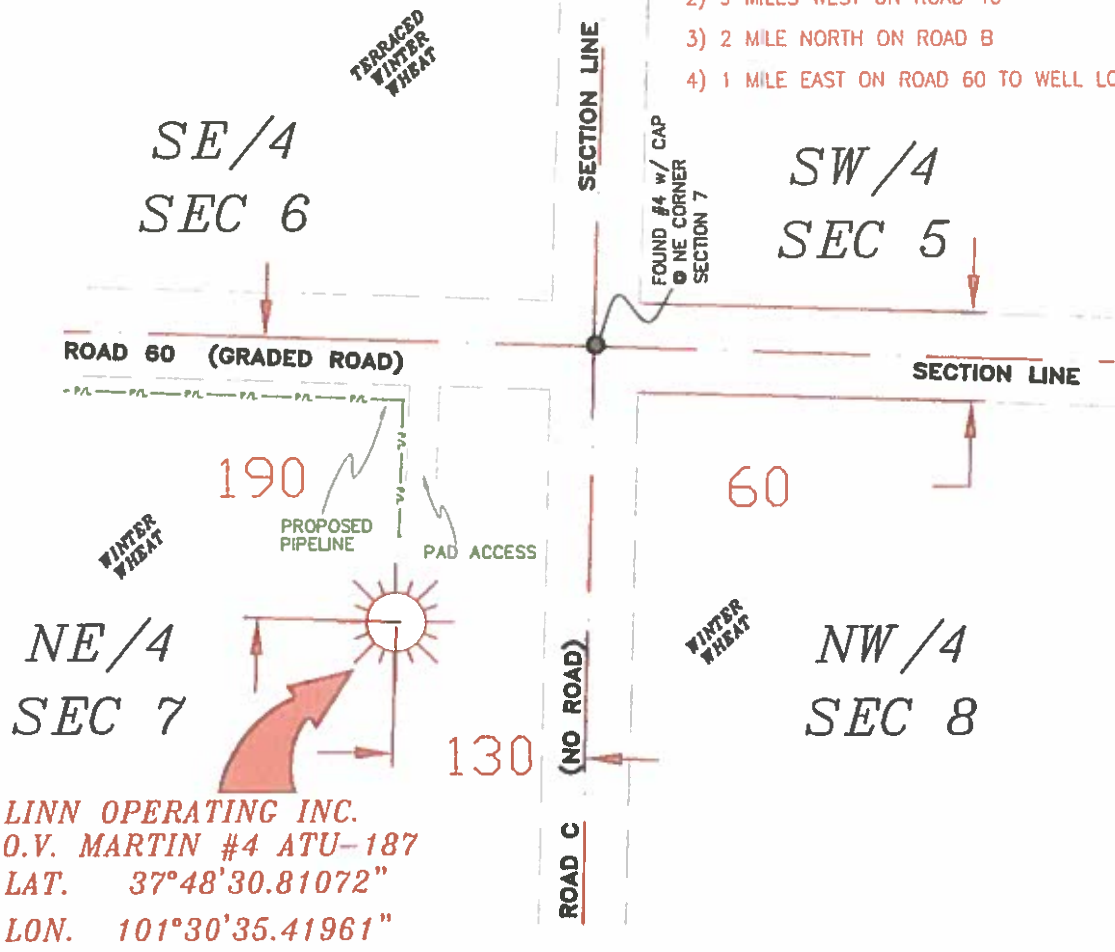
DATE: 11/05/13



2225 W. OKLAHOMA AVE.  
 ULYSSES KANSAS 67880  
 PH: (620) 356-6940  
 FAX: (620) 356-6950

DRIVING DIRECTIONS:

- BEGINNING AT INTERSECTION OF US HWY 160 & HWY 25
- 1) 14 MILES NORTH ON HWY 25
  - 2) 9 MILES WEST ON ROAD 40
  - 3) 2 MILE NORTH ON ROAD B
  - 4) 1 MILE EAST ON ROAD 60 TO WELL LOCATION



LINN OPERATING INC.  
 O.V. MARTIN #4 ATU-187  
 LAT. 37°48'30.81072"  
 LON. 101°30'35.41961"

- NOTES:
- 1) THIS PLAT DOES NOT REPRESENT A TRUE BOUNDARY SURVEY. THE FOOTINGS AND TIES SHOWN ARE FROM LINES OF OCCUPATION WHICH MAY NOT BE ACTUAL PROPERTY LINES.
  - 2) CONTRACTOR TO CONTACT ONE-CALL FOR FOREIGN UTILITY LOCATIONS PRIOR TO ANY EXCAVATION OR CONSTRUCTION.
  - 3) NAD 27 LAT-LONG



T-26-S, R-38-W  
 KEARNY COUNTY, KANSAS

LINN OPERATING INC.  
 O.V. MARTIN #4 ATU-187  
 SECTIONS 5, 6, 7 & 8  
 T-26-S, R-38-W  
 KEARNY COUNTY, KANSAS



JOHN DAVID KELLER, L.S. NO. 1518

**PLAT AND CERTIFICATION OF ACREAGE ATTRIBUTABLE TO A GAS WELL**

Kansas Corporation Commission, Conservation Division  
 Finney State Office Building, 130 South Market, Room 2078  
 Wichita, Kansas 67202

API NUMBER 15- \_\_\_\_\_

LOCATION OF WELL: COUNTY Kearny

OPERATOR LINN Operating, Inc.

190 N feet from south/north line of section  
 130 E feet from east / west line of section

LEASE O. V. Martin

WELL NUMBER 4 ATU-187

FIELD Hugoton-Panoma

SECTION 7 TWP 26 (S) RG 38W E/W

IS SECTION X REGULAR or \_\_\_\_\_ IRREGULAR

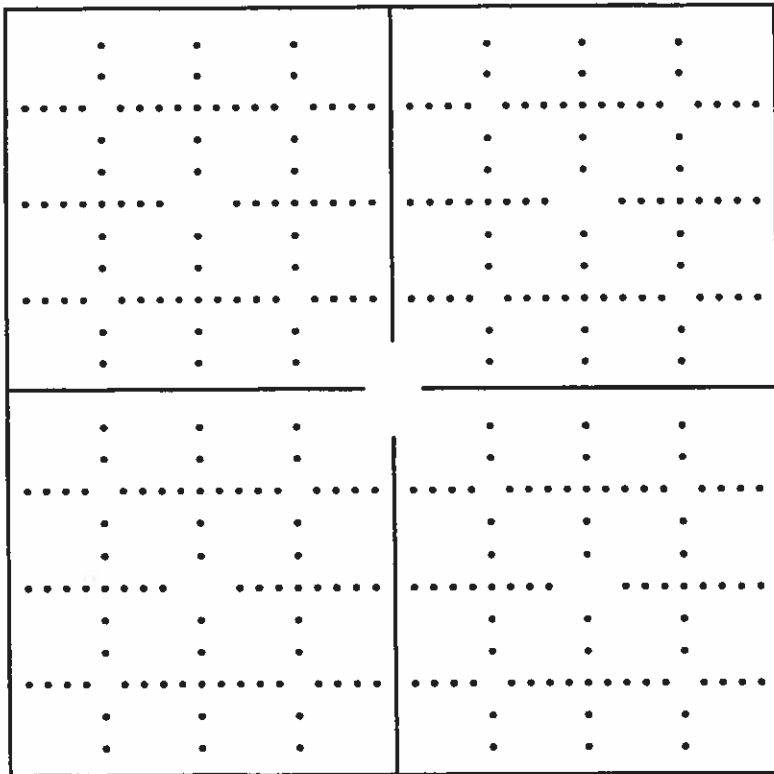
IF SECTION IS IRREGULAR, LOCATE WELL FROM  
 NEAREST CORNER BOUNDARY. (check line below)

Section corner used: NE NW SE SW

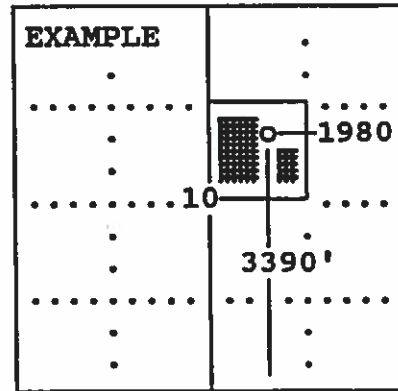
NUMBER OF ACRES ATTRIBUTABLE TO WELL 640

QTR/QTR/QTR OF ACREAGE NE - NE - NE

(Show the location of the well and shade attributable acreage for prorated or spaced wells).  
 (Show the footage to the nearest lease or unit boundary line; and show footage to the nearest  
 common source supply well).



*see attached  
map*



SEWARD CO.

The undersigned hereby certifies as Regulatory Compliance Advisor (title) for

LINN Operating, Inc. (Co.), a duly authorized agent, that all

information shown hereon is true and correct to the best of my knowledge and belief, that all  
 acreage claimed attributable to the well named herein is held by production from that well  
 and hereby make application for an allowable to be assigned to the well upon the filing of  
 this form and the State test, whichever is later.

Signature *Shawn H. Hines*

Subscribed and sworn to before me on this 3rd day of December, 19 2013

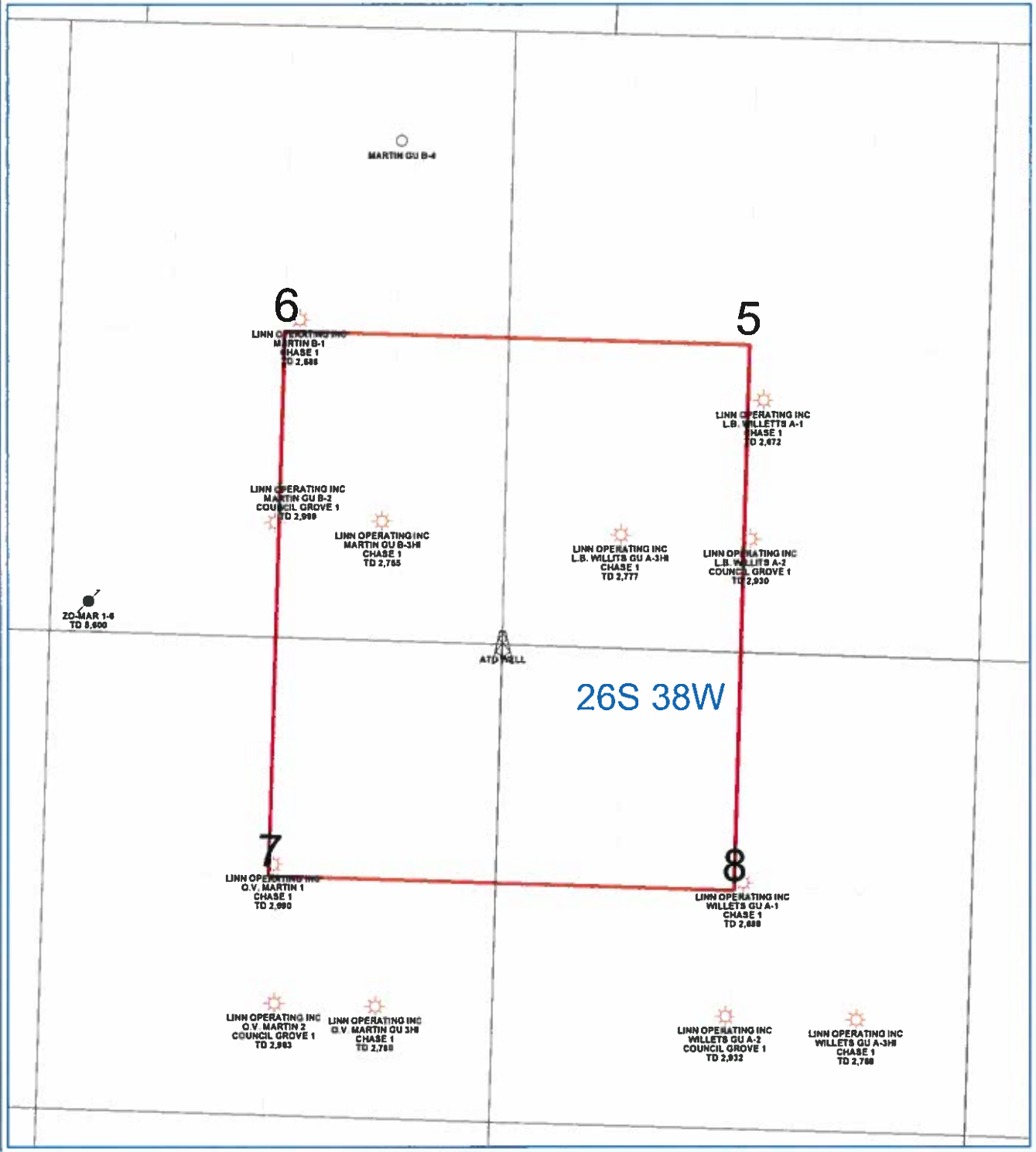


*Mindy Poter*

Notary Public

My Commission expires \_\_\_\_\_

FORM CG-8 (12/94)



PETRA 4/11/2013 10:51:58 AM

<b>LINN Operating Inc</b>	
Hugoton Kansas	
ATU Location	
Kearny Co. 26S - 38W	
<p>0 1,648 FEET</p>	
<p><b>WELL SYMBOLS</b></p> <ul style="list-style-type: none"> <li> ABANDONED LOCATION</li> <li> ATU Well Location</li> <li> Gas Well</li> <li> Plugged and Abandoned</li> </ul>	