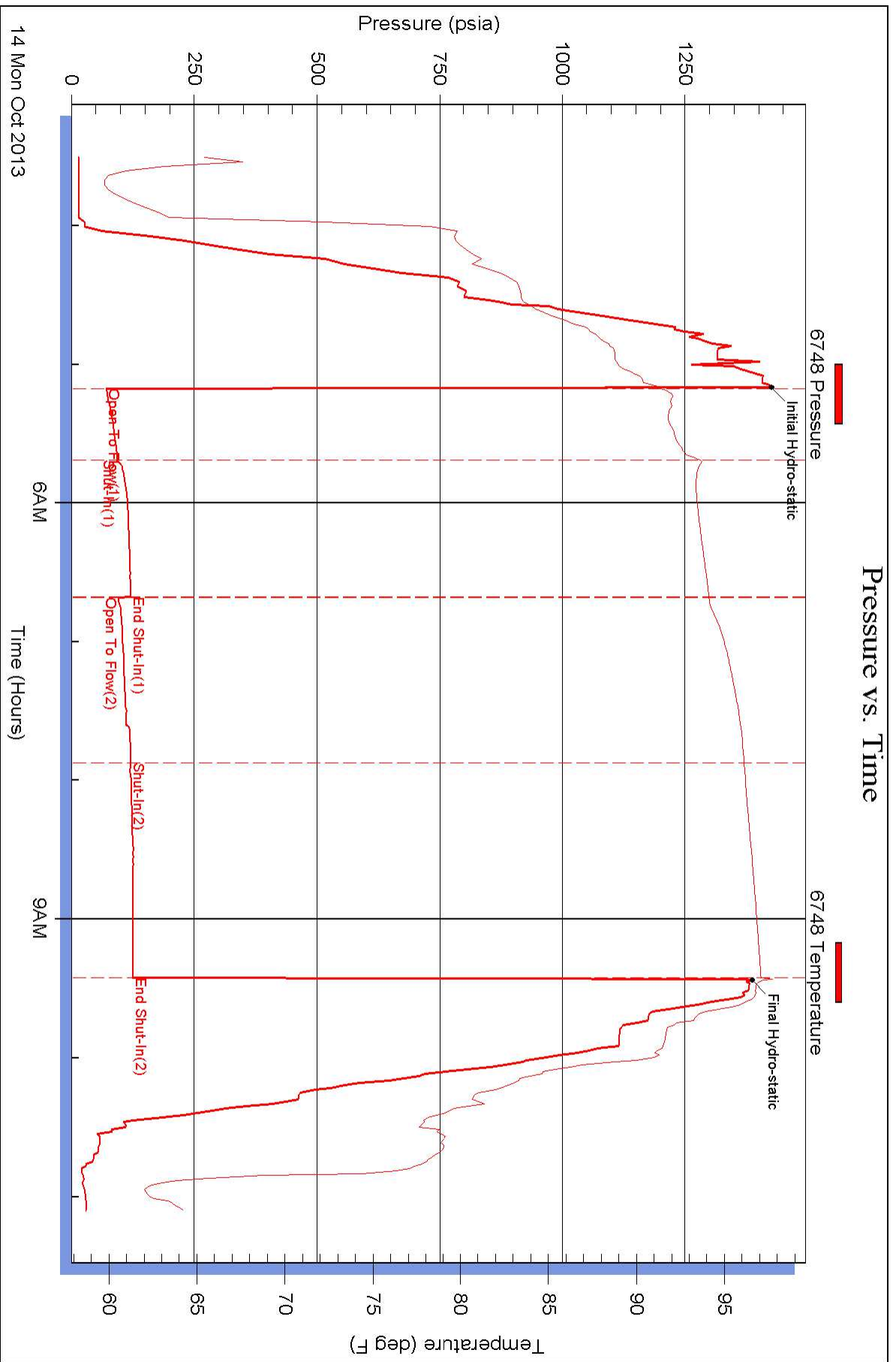
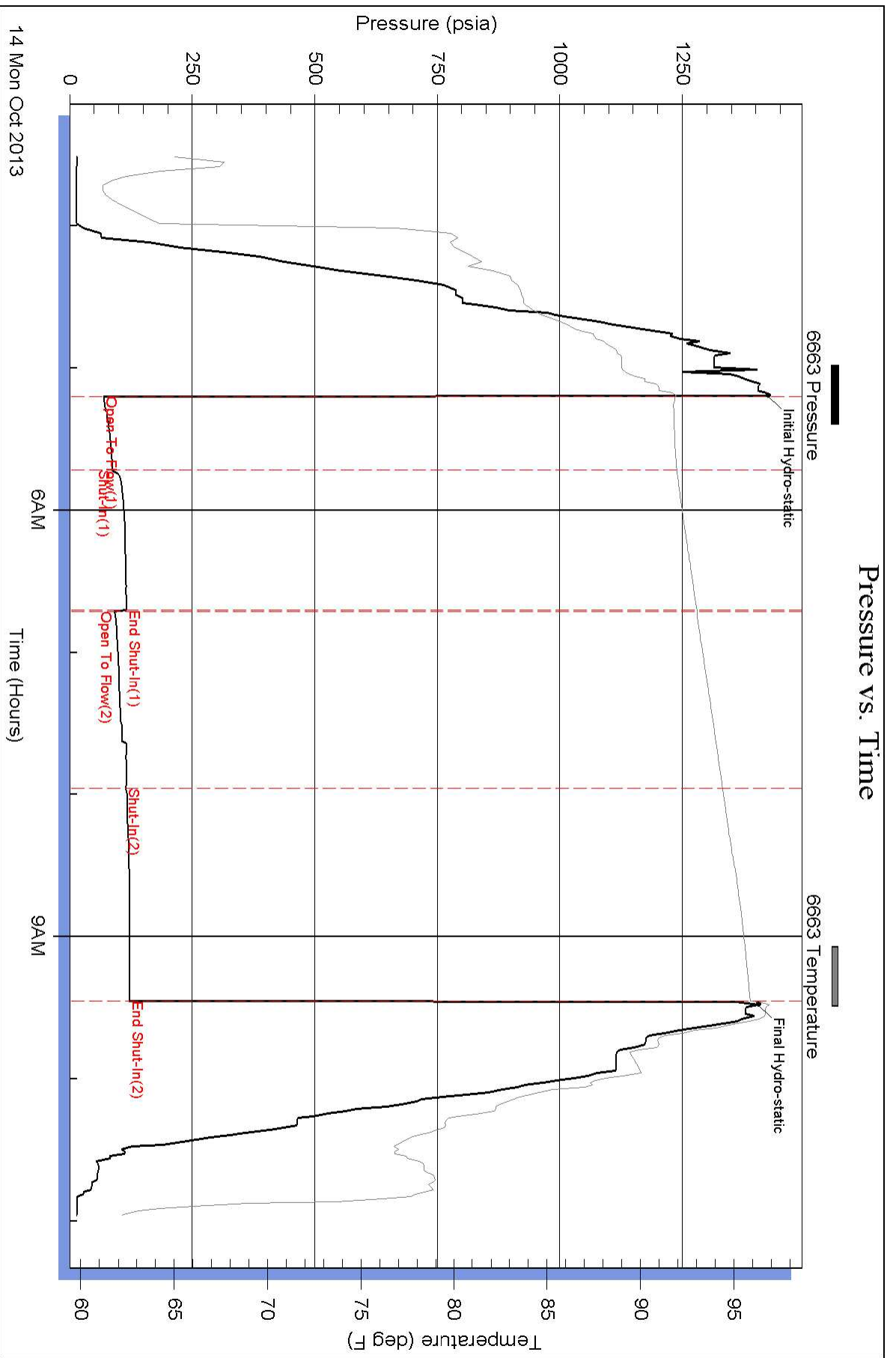


### Pressure vs. Time



### Pressure vs. Time





# DRILL STEM TEST REPORT

## FLUID SUMMARY

Trans Pacific Oil Company

**23-20s-11w Barton**

100 South Main Suite 200  
Wichita, Kansas 67206-3735

**Kasselman #8**

Job Ticket: 17091

**DST#: 1**

ATTN: Jeff Lawler

Test Start: 2013.10.14 @ 00:00:00

### Mud and Cushion Information

Mud Type: Gel Chem  
Mud Weight: 9.00 lb/gal  
Viscosity: 50.00 sec/qt  
Water Loss: 8.39 in<sup>3</sup>  
Resistivity: ohm.m  
Salinity: 4900.00 ppm  
Filter Cake: 1.00 inches

Cushion Type:  
Cushion Length: ft  
Cushion Volume: bbl  
Gas Cushion Type:  
Gas Cushion Pressure: psia

Oil API: deg API  
Water Salinity: ppm

### Recovery Information

Recovery Table

Length ft	Description	Volume bbl
0.00	420 feet of gas in the pipe	0.000
70.00	Drilling mud	0.000

Total Length: 70.00 ft      Total Volume: bbl

Num Fluid Samples: 0

Num Gas Bombs: 0

Serial #:

Laboratory Name:

Laboratory Location:

Recovery Comments:



# DRILL STEM TEST REPORT

**TOOL DIAGRAM**

Trans Pacific Oil Company

**23-20s-11w Barton**

100 South Main Suite 200  
Wichita, Kansas 67206-3735

**Kasselman #8**

Job Ticket: 17091

**DST#: 1**

ATTN: Jeff Lawler

Test Start: 2013.10.14 @ 00:00:00

## Tool Information

Drill Pipe:	Length: 2780.00 ft	Diameter: 3.80 inches	Volume: 39.00 bbl	Tool Weight: 2000.00 lb
Heavy Wt. Pipe:	Length: 0.00 ft	Diameter: 0.00 inches	Volume: 0.00 bbl	Weight set on Packer: 20000.00 lb
Drill Collar:	Length: 117.00 ft	Diameter: 0.00 inches	Volume: 0.00 bbl	Weight to Pull Loose: 72000.00 lb
			<u>Total Volume: 39.00 bbl</u>	Tool Chased 0.00 ft
Drill Pipe Above KB:	12.00 ft			String Weight: Initial 60000.00 lb
Depth to Top Packer:	2905.00 ft			Final 61000.00 lb
Depth to Bottom Packer:	ft			
Interval between Packers:	79.96 ft			
Tool Length:	99.96 ft			
Number of Packers:	1	Diameter: 6.75 inches		

Tool Comments:

Tool Description	Length (ft)	Serial No.	Position	Depth (ft)	Accum. Lengths
------------------	-------------	------------	----------	------------	----------------

Shut-In Tool	5.00			2890.00	
Hydraulic Tool	5.00			2895.00	
Packer	5.00			2900.00	20.00 Bottom Of Top Packer
Packer	5.00			2905.00	
Perforations	5.00			2910.00	
C.O. Sub	0.75			2910.75	
Drill Pipe	62.46			2973.21	
C.O. Sub	0.75			2973.96	
Perforations	6.00			2979.96	
Recorder	1.00	6663	Inside	2980.96	
Recorder	1.00	6748	Outside	2981.96	
Bullnose	3.00			2984.96	79.96 Bottom Packers & Anchor

**Total Tool Length: 99.96**



# DRILL STEM TEST REPORT

Trans Pacific Oil Company  
 100 South Main Suite 200  
 Wichita, Kansas 67206-3735  
 ATTN: Jeff Lawler

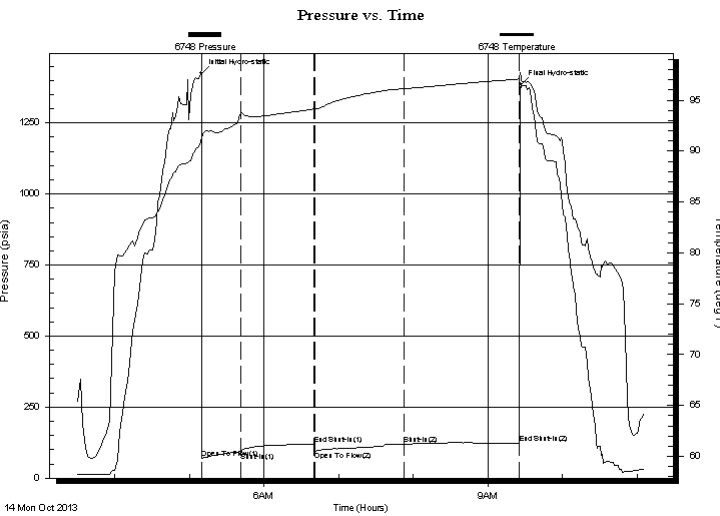
**23-20s-11w Barton**  
**Kasselman #8**  
 Job Ticket: 17091 **DST#: 1**  
 Test Start: 2013.10.14 @ 00:00:00

## GENERAL INFORMATION:

Formation: **Douglas Sand**  
 Deviated: No Whipstock: ft (KB)  
 Test Type: Conventional Bottom Hole (Initial)  
 Time Tool Opened: 00:00:00 Tester: Gene Budig  
 Time Test Ended: 00:00:00 Unit No: 3335-40  
 Interval: **2905.00 ft (KB) To 2985.00 ft (KB) (TVD)** Reference Elevations: 1764.00 ft (KB)  
 Total Depth: 2985.00 ft (KB) (TVD) 1754.00 ft (CF)  
 Hole Diameter: 7.88 inches Hole Condition: Fair KB to GR/CF: 10.00 ft

**Serial #: 6748 Outside**  
 Press @ Run Depth: 124.24 psia @ 2981.96 ft (KB) Capacity: 5000.00 psia  
 Start Date: 2013.10.14 End Date: 2013.10.14 Last Calib.: 2013.10.14  
 Start Time: 03:30:00 End Time: 11:06:23 Time On Btm: 2013.10.14 @ 05:09:53  
 Time Off Btm: 2013.10.14 @ 09:26:23

**TEST COMMENT:** 1st Shut-In 30 Minutes Fair blow built to the bottom of a 5 gallon bucket in 21 minutes  
 1st Shut-In 60 Minutes- No blow back  
 2nd Opening 75 minutes-Weak steady 2 inch blow for 55 minutes then decreased to a weak surface blow  
 2nd Shut-In 90 Minutes-No blow back



PRESSURE SUMMARY			
Time (Min.)	Pressure (psia)	Temp (deg F)	Annotation
0	1425.29	91.36	Initial Hydro-static
1	69.95	91.29	Open To Flow (1)
32	92.12	93.62	Shut-In(1)
91	119.55	94.13	End Shut-In(1)
91	96.18	94.13	Open To Flow (2)
163	119.79	96.12	Shut-In(2)
256	124.24	97.08	End Shut-In(2)
257	1386.26	97.21	Final Hydro-static

Recovery		
Length (ft)	Description	Volume (bbl)
0.00	420 feet of gas in the pipe	0.00
70.00	Drilling mud	0.00

Gas Rates			
	Choke (inches)	Pressure (psia)	Gas Rate (Mcf/d)



# DRILL STEM TEST REPORT

Trans Pacific Oil Company  
 100 South Main Suite 200  
 Wichita, Kansas 67206-3735  
 ATTN: Jeff Lawler

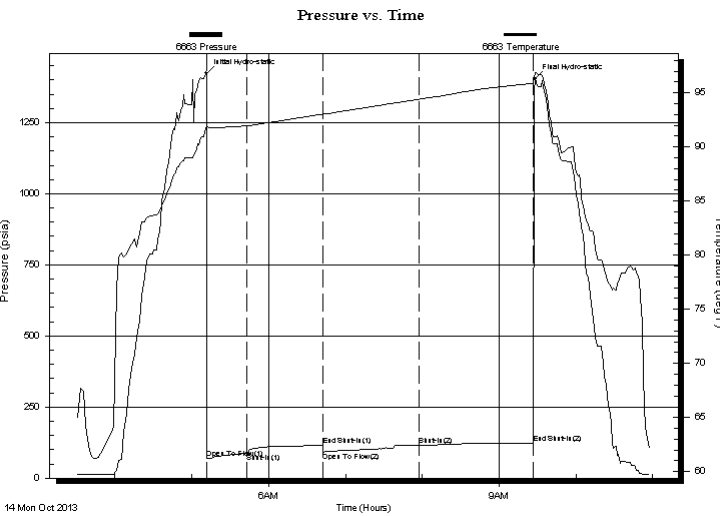
**23-20s-11w Barton**  
**Kasselman #8**  
 Job Ticket: 17091 **DST#: 1**  
 Test Start: 2013.10.14 @ 00:00:00

## GENERAL INFORMATION:

Formation: **Douglas Sand**  
 Deviated: No Whipstock: ft (KB)  
 Test Type: Conventional Bottom Hole (Initial)  
 Time Tool Opened: 00:00:00 Tester: Gene Budig  
 Time Test Ended: 00:00:00 Unit No: 3335-40  
 Interval: **2905.00 ft (KB) To 2985.00 ft (KB) (TVD)** Reference Elevations: 1764.00 ft (KB)  
 Total Depth: 2985.00 ft (KB) (TVD) 1754.00 ft (CF)  
 Hole Diameter: 7.88 inches Hole Condition: Fair KB to GR/CF: 10.00 ft

**Serial #: 6663 Inside**  
 Press @ Run Depth: 121.14 psia @ 2980.96 ft (KB) Capacity: 5000.00 psia  
 Start Date: 2013.10.14 End Date: 2013.10.14 Last Calib.: 2013.10.14  
 Start Time: 03:30:00 End Time: 10:58:00 Time On Btm: 2013.10.14 @ 05:11:30  
 Time Off Btm: 2013.10.14 @ 09:28:30

**TEST COMMENT:** 1st Shut-In 30 Minutes Fair blow built to the bottom of a 5 gallon bucket in 21 minutes  
 1st Shut-In 60 Minutes- No blow back  
 2nd Opening 75 minutes-Weak steady 2 inch blow for 55 minutes then decreased to a weak surface blow  
 2nd Shut-In 90 Minutes-No blow back



PRESSURE SUMMARY			
Time (Min.)	Pressure (psia)	Temp (deg F)	Annotation
0	1424.08	91.90	Initial Hydro-static
1	68.40	91.78	Open To Flow (1)
32	86.49	91.95	Shut-In(1)
91	115.09	93.02	End Shut-In(1)
91	90.30	93.02	Open To Flow (2)
166	114.33	94.40	Shut-In(2)
256	121.14	95.87	End Shut-In(2)
257	1404.33	96.88	Final Hydro-static

Recovery		
Length (ft)	Description	Volume (bbl)
0.00	420 feet of gas in the pipe	0.00
70.00	Drilling mud	0.00

Gas Rates			
	Choke (inches)	Pressure (psia)	Gas Rate (Mcf/d)



## DRILL STEM TEST REPORT

Prepared For: **Trans Pacific Oil Company**

100 South Main Suite 200  
Wichita, Kansas 67206-3735

ATTN: Jeff Lawler

### **Kasselman #8**

#### **23-20s-11w Barton**

Start Date: 2013.10.14 @ 00:00:00

End Date: 2013.10.14 @ 00:00:00

Job Ticket #: 17091                      DST #: 1

Superior Testers Enterprises LLC  
PO Box 138 Great Bend KS 67530  
1-800-792-6902

Printed: 2013.10.14 @ 11:22:21