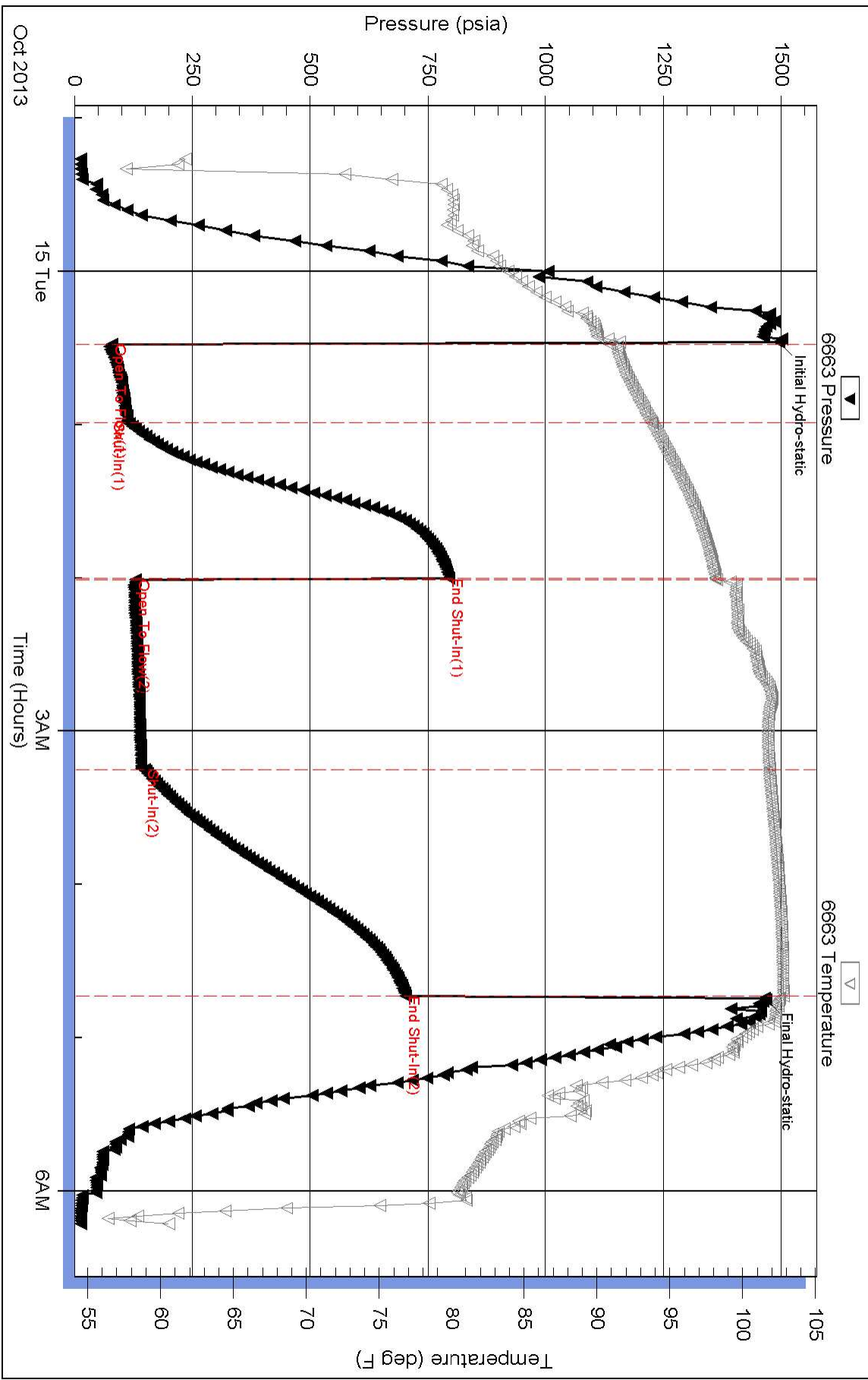


Pressure vs. Time





DRILL STEM TEST REPORT

FLUID SUMMARY

Trans Pacific Oil Company

23-20s-11w Barton

100 South Main Suite 200
Wichita, Kansas 67206-3735

Kasselman #8

Job Ticket: 17092

DST#: 2

ATTN: Jeff Lawler

Test Start: 2013.10.15 @ 00:00:00

Mud and Cushion Information

Mud Type: Gel Chem
Mud Weight: 9.00 lb/gal
Viscosity: 57.00 sec/qt
Water Loss: 7.99 in³
Resistivity: ohm.m
Salinity: 6100.00 ppm
Filter Cake: 1.00 inches

Cushion Type:
Cushion Length: ft
Cushion Volume: bbl
Gas Cushion Type:
Gas Cushion Pressure: psia

Oil API: deg API
Water Salinity: ppm

Recovery Information

Recovery Table

Length ft	Description	Volume bbl
0.00	300 feet of gas in the pipe	0.000
50.00	Oil and gas cut mud	0.246
0.00	10%Gas 5%Oil 80%Mud 5%Water	0.000
58.00	Heavy Oil and Gas Cut Mud	0.285
0.00	10%Gas 35%Oil 45%Mud 10%Water	0.000
58.00	Heavy Oil and Gas cut Mud	0.732
0.00	10%Gas20%Oil 50%Mud 20%Water	0.000
0.00	chlorides 24,000	0.000

Total Length: 166.00 ft Total Volume: 1.263 bbl

Num Fluid Samples: 0

Num Gas Bombs: 0

Serial #:

Laboratory Name:

Laboratory Location:

Recovery Comments:



DRILL STEM TEST REPORT

TOOL DIAGRAM

Trans Pacific Oil Company

23-20s-11w Barton

100 South Main Suite 200
Wichita, Kansas 67206-3735

Kasselmann #8

Job Ticket: 17092

DST#: 2

ATTN: Jeff Lawler

Test Start: 2013.10.15 @ 00:00:00

Tool Information

Drill Pipe:	Length: 2906.00 ft	Diameter: 3.80 inches	Volume: 40.76 bbl	Tool Weight: 2000.00 lb
Heavy Wt. Pipe:	Length: 0.00 ft	Diameter: 0.00 inches	Volume: 0.00 bbl	Weight set on Packer: 20000.00 lb
Drill Collar:	Length: 117.00 ft	Diameter: 2.25 inches	Volume: 0.58 bbl	Weight to Pull Loose: 69000.00 lb
			<u>Total Volume: 41.34 bbl</u>	Tool Chased 0.00 ft
Drill Pipe Above KB:	28.00 ft			String Weight: Initial 61000.00 lb
Depth to Top Packer:	3015.00 ft			Final 62000.00 lb
Depth to Bottom Packer:	ft			
Interval between Packers:	89.98 ft			
Tool Length:	109.98 ft			
Number of Packers:	2	Diameter: 6.75 inches		

Tool Comments:

Tool Description	Length (ft)	Serial No.	Position	Depth (ft)	Accum. Lengths
------------------	-------------	------------	----------	------------	----------------

Shut-In Tool	5.00			3000.00	
Hydraulic Tool	5.00			3005.00	
Packer	5.00			3010.00	20.00 Bottom Of Top Packer
Packer	5.00			3015.00	
Perforations	5.00			3020.00	
C.O. Sub	0.75			3020.75	
Drill Pipe	63.48			3084.23	
C.O. Sub	0.75			3084.98	
Perforations	15.00			3099.98	
Recorder	1.00	6663	Inside	3100.98	
Recorder	1.00	6748	Outside	3101.98	
Bullnose	3.00			3104.98	89.98 Bottom Packers & Anchor

Total Tool Length: 109.98



DRILL STEM TEST REPORT

Trans Pacific Oil Company

23-20s-11w Barton

100 South Main Suite 200
Wichita, Kansas 67206-3735

Kasselman #8

Job Ticket: 17092

DST#: 2

ATTN: Jeff Lawler

Test Start: 2013.10.15 @ 00:00:00

GENERAL INFORMATION:

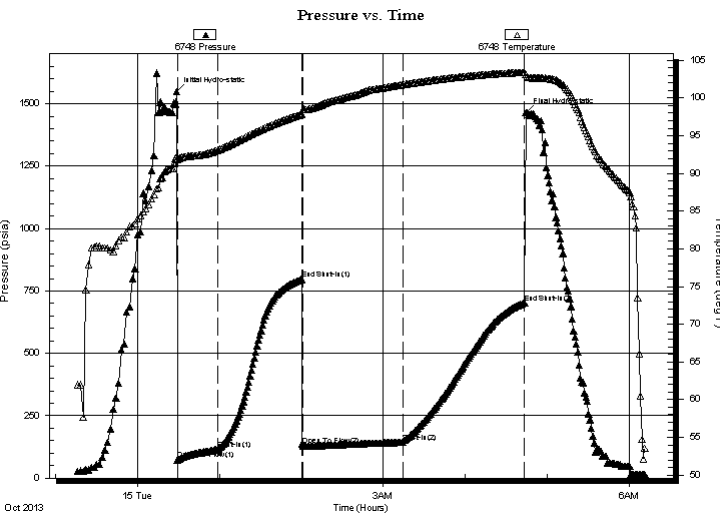
Formation: **Kansas City "A-F"**
 Deviated: No Whipstock: ft (KB)
 Time Tool Opened: 00:00:00
 Time Test Ended: 00:00:00
 Interval: **3015.00 ft (KB) To 3105.00 ft (KB) (TVD)**
 Total Depth: 3105.00 ft (KB) (TVD)
 Hole Diameter: 7.88 inches Hole Condition: Fair
 Test Type: Conventional Bottom Hole (Initial)
 Tester: Gene Budig
 Unit No: 3335-45
 Reference Elevations: 1764.00 ft (KB)
 1754.00 ft (CF)
 KB to GR/CF: 10.00 ft

Serial #: 6748

Outside

Press @ Run Depth: 702.51 psia @ 3101.98 ft (KB) Capacity: 5000.00 psia
 Start Date: 2013.10.14 End Date: 2013.10.15 Last Calib.: 2013.10.15
 Start Time: 23:15:00 End Time: 06:12:00 Time On Btm: 2013.10.15 @ 00:28:30
 Time Off Btm: 2013.10.15 @ 04:44:30

TEST COMMENT: 1st Opening 30 Minutes Weak building blow built to 11 1/2 inches into the water (1/2 inch from the bottom)
 1st Shut-In 60 Minutes-No blow back
 2nd Opening 75 Minutes-Weak building blow built to the bottom of a 5 gallon bucket in 28 minutes
 2nd Shut-In 90 Minutes-No blow back



PRESSURE SUMMARY

Time (Min.)	Pressure (psia)	Temp (deg F)	Annotation
0	1547.45	92.18	Initial Hydro-static
1	74.09	91.90	Open To Flow (1)
30	114.04	93.09	Shut-In(1)
92	796.62	97.81	End Shut-In(1)
93	129.85	98.50	Open To Flow (2)
166	142.88	101.78	Shut-In(2)
255	702.51	103.40	End Shut-In(2)
256	1463.70	103.09	Final Hydro-static

Recovery

Length (ft)	Description	Volume (bbl)
0.00	300 feet of gas in the pipe	0.00
50.00	Oil and gas cut mud	0.25
0.00	10%Gas 5%Oil 80%Mud 5%Water	0.00
58.00	Heavy Oil and Gas Cut Mud	0.29
0.00	10%Gas 35%Oil 45%Mud 10%Water	0.00
58.00	Heavy Oil and Gas cut Mud	0.73

Gas Rates

	Choke (inches)	Pressure (psia)	Gas Rate (Mcf/d)



DRILL STEM TEST REPORT

Trans Pacific Oil Company
 100 South Main Suite 200
 Wichita, Kansas 67206-3735
 ATTN: Jeff Lawler

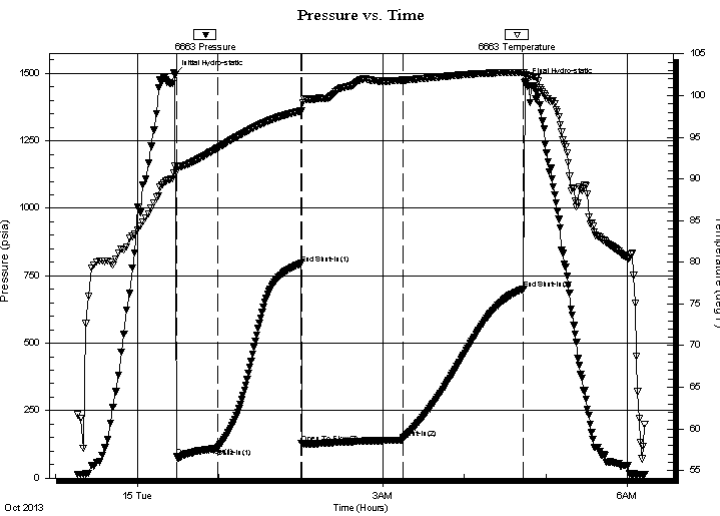
23-20s-11w Barton
Kasselman #8
 Job Ticket: 17092 **DST#: 2**
 Test Start: 2013.10.15 @ 00:00:00

GENERAL INFORMATION:

Formation: **Kansas City "A-F"**
 Deviated: No Whipstock: ft (KB)
 Time Tool Opened: 00:00:00
 Time Test Ended: 00:00:00
 Interval: **3015.00 ft (KB) To 3105.00 ft (KB) (TVD)**
 Total Depth: 3105.00 ft (KB) (TVD)
 Hole Diameter: 7.88 inches Hole Condition: Fair
 Test Type: Conventional Bottom Hole (Initial)
 Tester: Gene Budig
 Unit No: 3335-45
 Reference Elevations: 1764.00 ft (KB)
 1754.00 ft (CF)
 KB to GR/CF: 10.00 ft

Serial #: 6663 Inside
 Press @ Run Depth: 701.99 psia @ 3100.98 ft (KB) Capacity: 5000.00 psia
 Start Date: 2013.10.14 End Date: 2013.10.15 Last Calib.: 2013.10.15
 Start Time: 23:15:00 End Time: 06:12:30 Time On Btm: 2013.10.15 @ 00:27:30
 Time Off Btm: 2013.10.15 @ 04:45:00

TEST COMMENT: 1st Opening 30 Minutes Weak building blow built to 11 1/2 inches into the water (1/2 inch from the bottom)
 1st Shut-In 60 Minutes-No blow back
 2nd Opening 75 Minutes-Weak building blow built to the bottom of a 5 gallon bucket in 28 minutes
 2nd Shut-In 90 Minutes-No blow back



PRESSURE SUMMARY

Time (Min.)	Pressure (psia)	Temp (deg F)	Annotation
0	1494.31	91.53	Initial Hydro-static
1	79.68	90.88	Open To Flow (1)
32	112.30	93.72	Shut-In(1)
93	795.47	98.14	End Shut-In(1)
93	129.02	98.20	Open To Flow (2)
168	148.80	101.85	Shut-In(2)
256	701.99	102.78	End Shut-In(2)
258	1467.60	102.50	Final Hydro-static

Recovery

Length (ft)	Description	Volume (bbl)
0.00	300 feet of gas in the pipe	0.00
50.00	Oil and gas cut mud	0.25
0.00	10%Gas 5%Oil 80%Mud 5%Water	0.00
58.00	Heavy Oil and Gas Cut Mud	0.29
0.00	10%Gas 35%Oil 45%Mud 10%Water	0.00
58.00	Heavy Oil and Gas cut Mud	0.73

Gas Rates

	Choke (inches)	Pressure (psia)	Gas Rate (Mcf/d)



DRILL STEM TEST REPORT

Prepared For: **Trans Pacific Oil Company**

100 South Main Suite 200
Wichita, Kansas 67206-3735

ATTN: Jeff Lawler

Kasselman #8

23-20s-11w Barton

Start Date: 2013.10.15 @ 00:00:00

End Date: 2013.10.15 @ 00:00:00

Job Ticket #: 17092 DST #: 2

Superior Testers Enterprises LLC
PO Box 138 Great Bend KS 67530
1-800-792-6902

Printed: 2013.10.15 @ 06:39:12