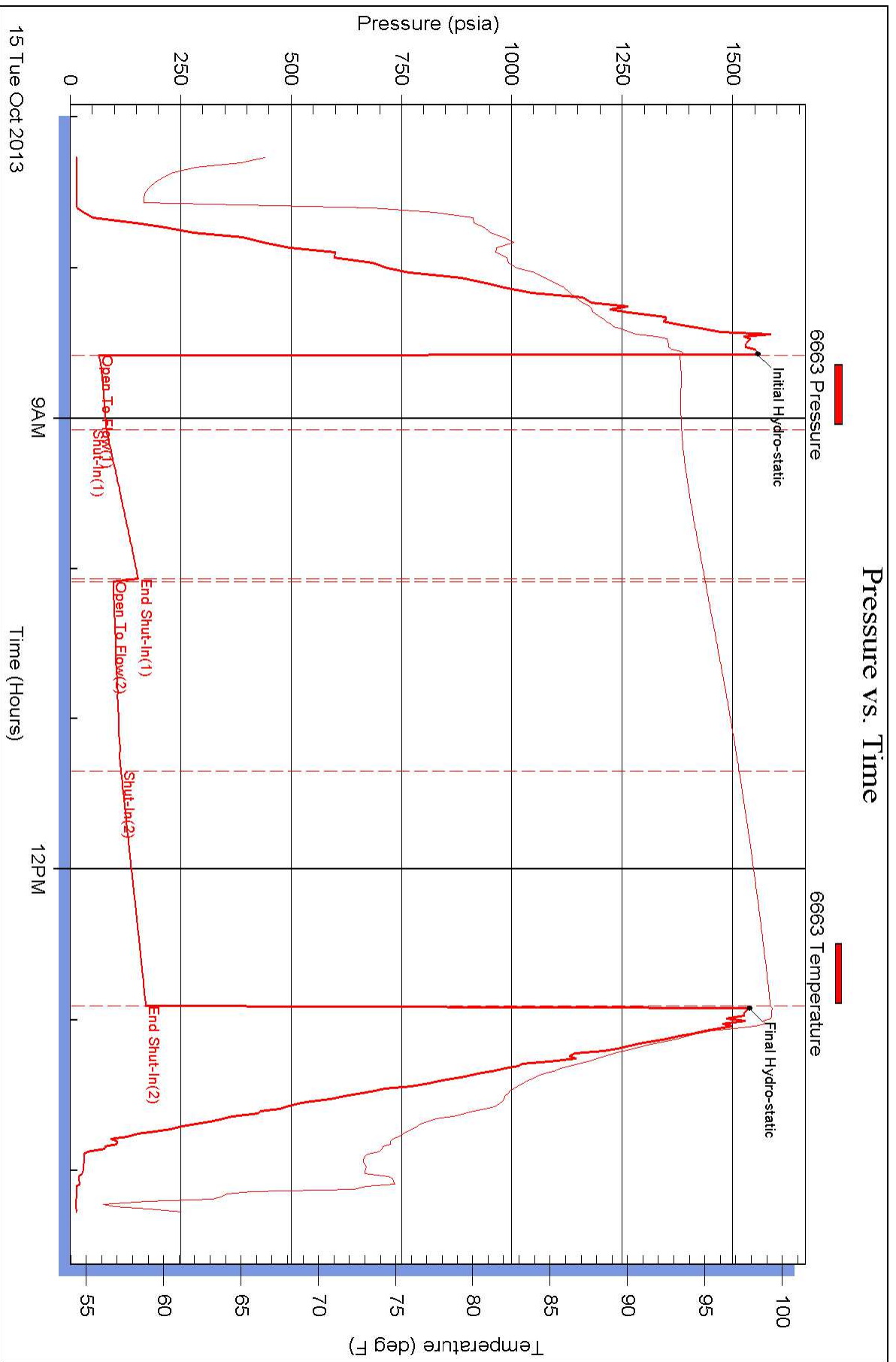
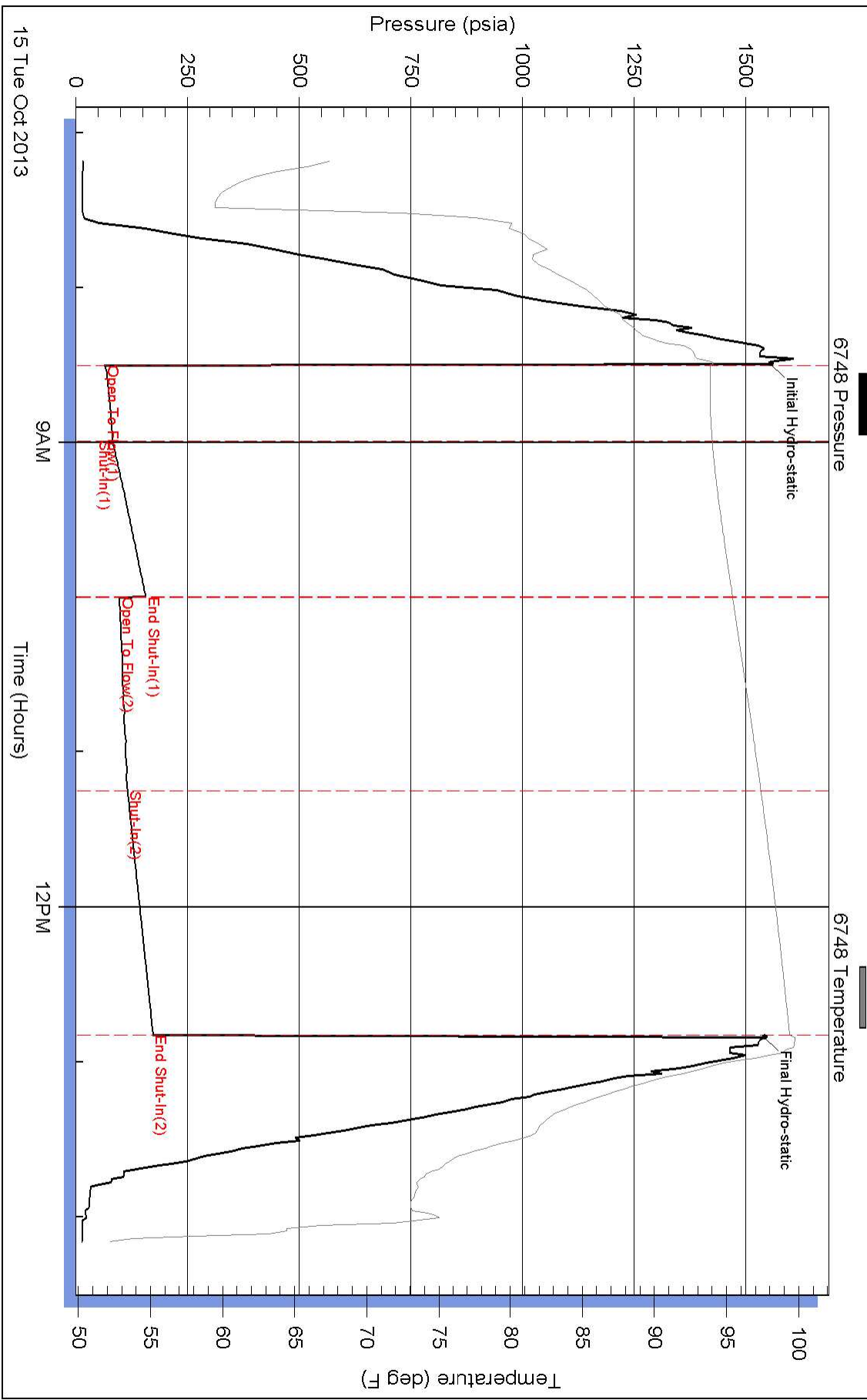


Pressure vs. Time



Pressure vs. Time





DRILL STEM TEST REPORT

FLUID SUMMARY

Trans Pacific Oil Company

23-20s-11w Barton

100 South Main Suite 200
Wichita, Kansas 67206-3735

Kasselman #8

Job Ticket: 17093

DST#: 3

ATTN: Jeff Lawler

Test Start: 2013.10.15 @ 00:00:00

Mud and Cushion Information

Mud Type: Gel Chem

Cushion Type:

Oil API:

deg API

Mud Weight: 9.00 lb/gal

Cushion Length:

ft

Water Salinity:

ppm

Viscosity: 56.00 sec/qt

Cushion Volume:

bbbl

Water Loss: 7.60 in³

Gas Cushion Type:

Resistivity: ohm.m

Gas Cushion Pressure:

psia

Salinity: 6800.00 ppm

Filter Cake: 1.00 inches

Recovery Information

Recovery Table

Length ft	Description	Volume bbbl
70.00	Drilling Mud	0.344

Total Length: 70.00 ft Total Volume: 0.344 bbl

Num Fluid Samples: 0

Num Gas Bombs: 0

Serial #:

Laboratory Name:

Laboratory Location:

Recovery Comments:



DRILL STEM TEST REPORT

TOOL DIAGRAM

Trans Pacific Oil Company

23-20s-11w Barton

100 South Main Suite 200
Wichita, Kansas 67206-3735

Kasselmann #8

Job Ticket: 17093

DST#: 3

ATTN: Jeff Lawler

Test Start: 2013.10.15 @ 00:00:00

Tool Information

Drill Pipe:	Length: 3033.00 ft	Diameter: 3.80 inches	Volume: 42.55 bbl	Tool Weight: 2000.00 lb
Heavy Wt. Pipe:	Length: 0.00 ft	Diameter: 0.00 inches	Volume: 0.00 bbl	Weight set on Packer: 20000.00 lb
Drill Collar:	Length: 117.00 ft	Diameter: 2.25 inches	Volume: 0.58 bbl	Weight to Pull Loose: 69000.00 lb
			<u>Total Volume: 43.13 bbl</u>	Tool Chased 0.00 ft
Drill Pipe Above KB:	23.00 ft			String Weight: Initial 60000.00 lb
Depth to Top Packer:	3147.00 ft			Final 60000.00 lb
Depth to Bottom Packer:	ft			
Interval between Packers:	72.61 ft			
Tool Length:	92.61 ft			
Number of Packers:	2	Diameter: 6.75 inches		
Tool Comments:				

Tool Description	Length (ft)	Serial No.	Position	Depth (ft)	Accum. Lengths
------------------	-------------	------------	----------	------------	----------------

Shut-In Tool	5.00			3132.00	
Hydraulic Tool	5.00			3137.00	
Packer	5.00			3142.00	20.00 Bottom Of Top Packer
Packer	5.00			3147.00	
Perforations	5.00			3152.00	
C.O. Sub	0.75			3152.75	
Drill Pipe	31.11			3183.86	
C.O. Sub	0.75			3184.61	
Perforations	30.00			3214.61	
Recorder	1.00	6663	Inside	3215.61	
Recorder	1.00	6748	Outside	3216.61	
Bullnose	3.00			3219.61	72.61 Bottom Packers & Anchor

Total Tool Length: 92.61



DRILL STEM TEST REPORT

Trans Pacific Oil Company
 100 South Main Suite 200
 Wichita, Kansas 67206-3735
 ATTN: Jeff Lawler

23-20s-11w Barton
Kasselman #8
 Job Ticket: 17093 **DST#: 3**
 Test Start: 2013.10.15 @ 00:00:00

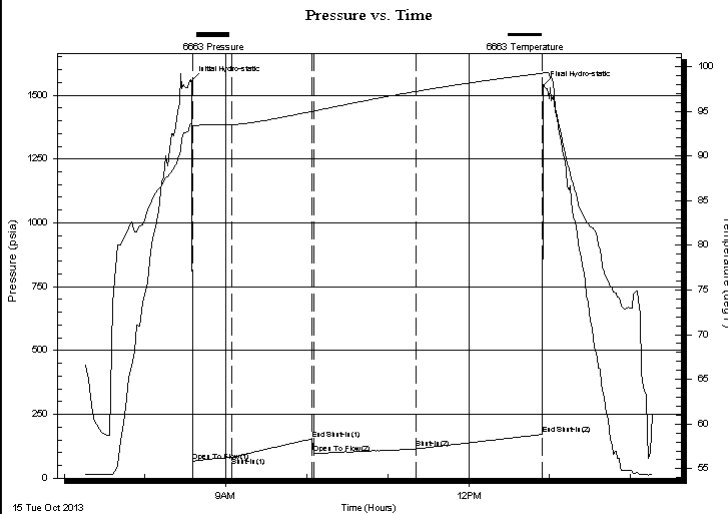
GENERAL INFORMATION:

Formation: **Kansas City "h-I & J"**
 Deviated: No Whipstock: ft (KB) Test Type: Conventional Bottom Hole (Initial)
 Time Tool Opened: 00:00:00 Tester: Gene Budig
 Time Test Ended: 00:00:00 Unit No: 3335
 Interval: **3147.00 ft (KB) To 3220.00 ft (KB) (TVD)** Reference Elevations: 1764.00 ft (KB)
 Total Depth: 3220.00 ft (KB) (TVD) 1754.00 ft (CF)
 Hole Diameter: 7.88 inches Hole Condition: Fair KB to GR/CF: 10.00 ft

Serial #: 6663 Inside

Press @ Run Depth: 170.93 psia @ 3215.61 ft (KB) Capacity: 5000.00 psia
 Start Date: 2013.10.15 End Date: 2013.10.15 Last Calib.: 2013.10.16
 Start Time: 07:15:00 End Time: 14:16:30 Time On Btm: 2013.10.15 @ 08:34:30
 Time Off Btm: 2013.10.15 @ 12:55:30

TEST COMMENT: 1st Opening 30 Minutes weak building blow built to 4 inches into the water
 1st Shut-In 60 Minutes-No blow back
 2nd Opening 75 Minutes-Weak stead 2 inch blow for 50 minutes then decreased and died after 65 minutes
 2nd Shut-In 90 Minutes-No blow back



PRESSURE SUMMARY

Time (Min.)	Pressure (psia)	Temp (deg F)	Annotation
0	1555.58	93.66	Initial Hydro-static
1	65.33	93.37	Open To Flow (1)
30	81.67	93.50	Shut-In(1)
90	154.07	95.00	End Shut-In(1)
91	96.83	95.02	Open To Flow (2)
167	114.94	97.22	Shut-In(2)
260	170.93	99.24	End Shut-In(2)
261	1537.29	99.35	Final Hydro-static

Recovery

Length (ft)	Description	Volume (bbl)
70.00	Drilling Mud	0.34

Gas Rates

	Choke (inches)	Pressure (psia)	Gas Rate (Mcf/d)



DRILL STEM TEST REPORT

Trans Pacific Oil Company
 100 South Main Suite 200
 Wichita, Kansas 67206-3735
 ATTN: Jeff Lawler

23-20s-11w Barton
Kasselman #8
 Job Ticket: 17093 **DST#: 3**
 Test Start: 2013.10.15 @ 00:00:00

GENERAL INFORMATION:

Formation: **Kansas City "h-I & J**
 Deviated: No Whipstock: ft (KB)
 Time Tool Opened: 00:00:00
 Time Test Ended: 00:00:00

Test Type: Conventional Bottom Hole (Initial)
 Tester: Gene Budig
 Unit No: 3335

Interval: 3147.00 ft (KB) To 3220.00 ft (KB) (TVD)
 Total Depth: 3220.00 ft (KB) (TVD)
 Hole Diameter: 7.88 inches Hole Condition: Fair

Reference Elevations: 1764.00 ft (KB)
 1754.00 ft (CF)
 KB to GR/CF: 10.00 ft

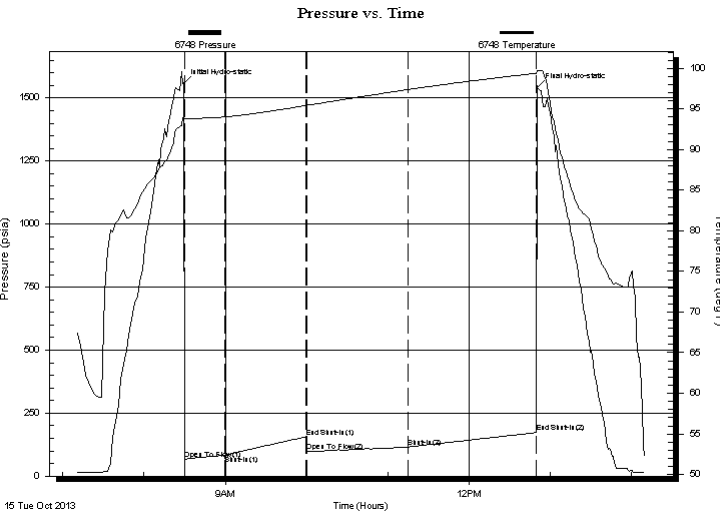
Serial #: 6748

Outside

Press @ Run Depth: 172.60 psia @ 3216.61 ft (KB)
 Start Date: 2013.10.15 End Date: 2013.10.15
 Start Time: 07:10:00 End Time: 14:10:00

Capacity: 5000.00 psia
 Last Calib.: 2013.10.16
 Time On Btm: 2013.10.15 @ 08:29:30
 Time Off Btm: 2013.10.15 @ 12:50:30

TEST COMMENT: 1st Opening 30 Minutes weak building blow built to 4 inches into the water
 1st Shut-In 60 Minutes-No blow back
 2nd Opening 75 Minutes-Weak stead 2 inch blow for 50 minutes then decreased and died after 65 minutes
 2nd Shut-In 90 Minutes-No blow back



PRESSURE SUMMARY

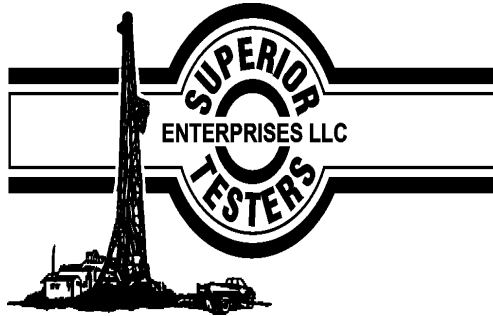
Time (Min.)	Pressure (psia)	Temp (deg F)	Annotation
0	1555.65	94.09	Initial Hydro-static
1	65.03	93.77	Open To Flow (1)
31	82.67	94.01	Shut-In(1)
91	155.88	95.42	End Shut-In(1)
91	98.14	95.42	Open To Flow (2)
166	115.78	97.38	Shut-In(2)
260	172.60	99.38	End Shut-In(2)
261	1541.67	99.74	Final Hydro-static

Recovery

Length (ft)	Description	Volume (bbl)
70.00	Drilling Mud	0.34

Gas Rates

	Choke (inches)	Pressure (psia)	Gas Rate (Mcf/d)



DRILL STEM TEST REPORT

Prepared For: **Trans Pacific Oil Company**

100 South Main Suite 200
Wichita, Kansas 67206-3735

ATTN: Jeff Lawler

Kasselman #8

23-20s-11w Barton

Start Date: 2013.10.15 @ 00:00:00

End Date: 2013.10.15 @ 00:00:00

Job Ticket #: 17093 DST #: 3

Superior Testers Enterprises LLC
PO Box 138 Great Bend KS 67530
1-800-792-6902

Printed: 2013.10.16 @ 02:13:44