

Serial #: 8524

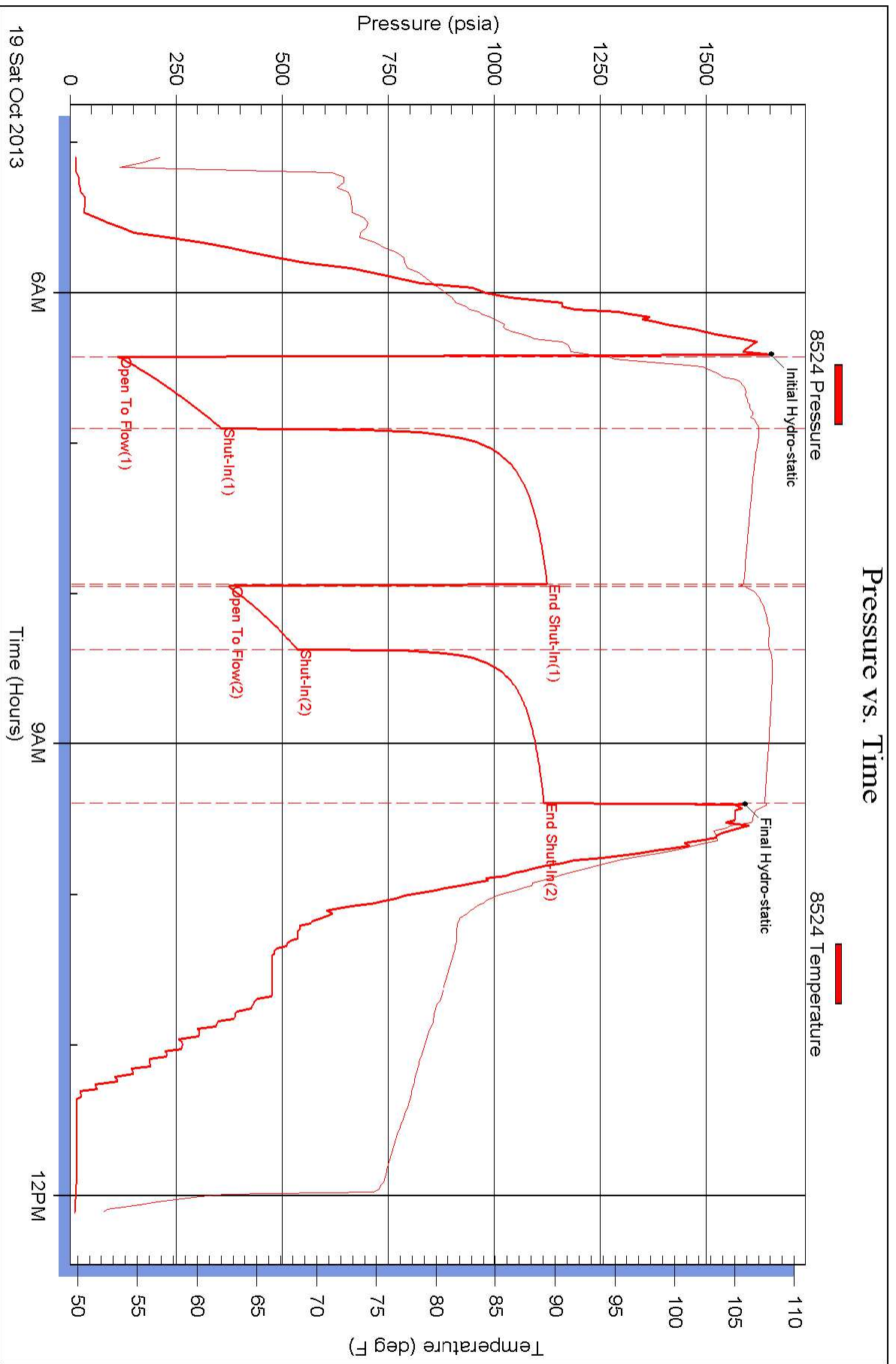
Inside

Trans Pacific Oil Company

Kasselman #8

DST Test Number: 7

Pressure vs. Time

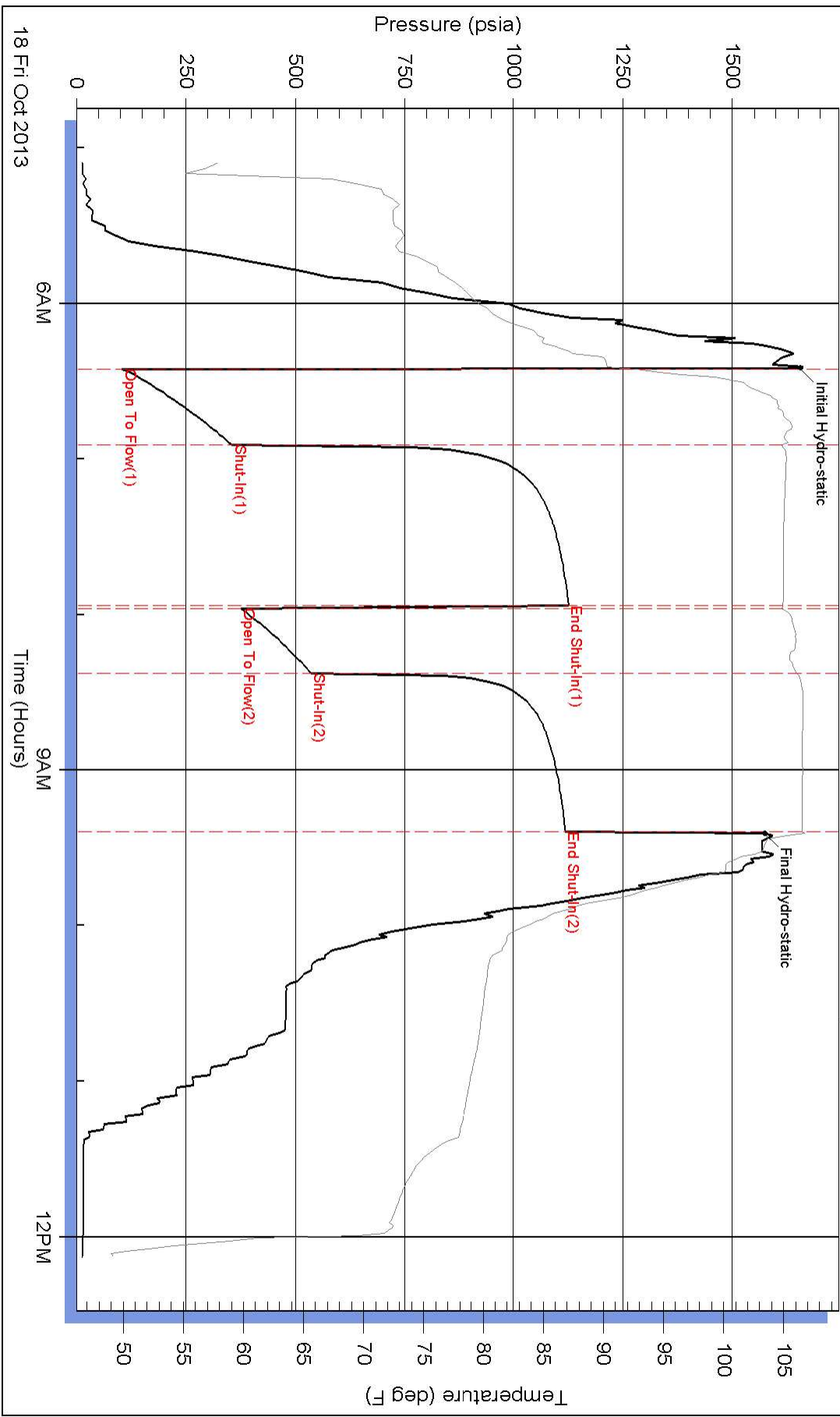


Superior Testers Enterprises LLC

Ref. No: 18571

Printed: 2013.10.19 @ 00:42:27

Pressure vs. Time





DRILL STEM TEST REPORT

FLUID SUMMARY

Trans Pacific Oil Company

23-20s-11w Barton

100 South Main Suite 200
Wichita, Kansas 67206-3735

Kasselman #8

Job Ticket: 18571

DST#: 7

ATTN: Jeff Lawler

Test Start: 2013.10.18 @ 05:05:00

Mud and Cushion Information

Mud Type: Gel Chem
Mud Weight: 9.00 lb/gal
Viscosity: 48.00 sec/qt
Water Loss: 11.99 in³
Resistivity: ohm.m
Salinity: 9300.00 ppm
Filter Cake: 1.00 inches

Cushion Type:
Cushion Length: ft
Cushion Volume: bbl
Gas Cushion Type:
Gas Cushion Pressure: psia

Oil API: deg API
Water Salinity: ppm

Recovery Information

Recovery Table

Length ft	Description	Volume bbl
427.00	Gassy oil cut mud	4.924
0.00	Oil 3 % Gas 20% Mud 77%	0.000
305.00	Gassy oil cut muddy w ater	4.278
0.00	Oil 2% Gas 10% Mud 43% Water 45%	0.000
427.00	Oil spotted gassy w ater	5.990
0.00	Gas 20% Water 80%	0.000

Total Length: 1159.00 ft Total Volume: 15.192 bbl

Num Fluid Samples: 0

Num Gas Bombs: 0

Serial #:

Laboratory Name:

Laboratory Location:

Recovery Comments:



DRILL STEM TEST REPORT

TOOL DIAGRAM

Trans Pacific Oil Company
 100 South Main Suite 200
 Wichita, Kansas 67206-3735
 ATTN: Jeff Lawler

23-20s-11w Barton
Kasselman #8
 Job Ticket: 18571 **DST#: 7**
 Test Start: 2013.10.18 @ 05:05:00

Tool Information

Drill Pipe:	Length: 3193.00 ft	Diameter: 3.80 inches	Volume: 44.79 bbl	Tool Weight: 2000.00 lb
Heavy Wt. Pipe:	Length: 0.00 ft	Diameter: 0.00 inches	Volume: 0.00 bbl	Weight set on Packer: 20000.00 lb
Drill Collar:	Length: 117.00 ft	Diameter: 2.25 inches	Volume: 0.58 bbl	Weight to Pull Loose: 72000.00 lb
			<u>Total Volume: 45.37 bbl</u>	Tool Chased 2.00 ft
Drill Pipe Above KB:	13.00 ft			String Weight: Initial 65000.00 lb
Depth to Top Packer:	3317.00 ft			Final 68000.00 lb
Depth to Bottom Packer:	ft			
Interval between Packers:	43.00 ft			
Tool Length:	63.00 ft			
Number of Packers:	2	Diameter: 6.75 inches		

Tool Comments:

Tool Description	Length (ft)	Serial No.	Position	Depth (ft)	Accum. Lengths
Shut-In Tool	5.00			3302.00	
Hydraulic Tool	5.00			3307.00	
Packer	5.00			3312.00	20.00 Bottom Of Top Packer
Packer	5.00			3317.00	
Perforations	38.00			3355.00	
Recorder	1.00	8524	Inside	3356.00	
Recorder	1.00	6839	Outside	3357.00	
Bullnose	3.00			3360.00	43.00 Bottom Packers & Anchor

Total Tool Length: 63.00



DRILL STEM TEST REPORT

Trans Pacific Oil Company
 100 South Main Suite 200
 Wichita, Kansas 67206-3735
 ATTN: Jeff Lawler

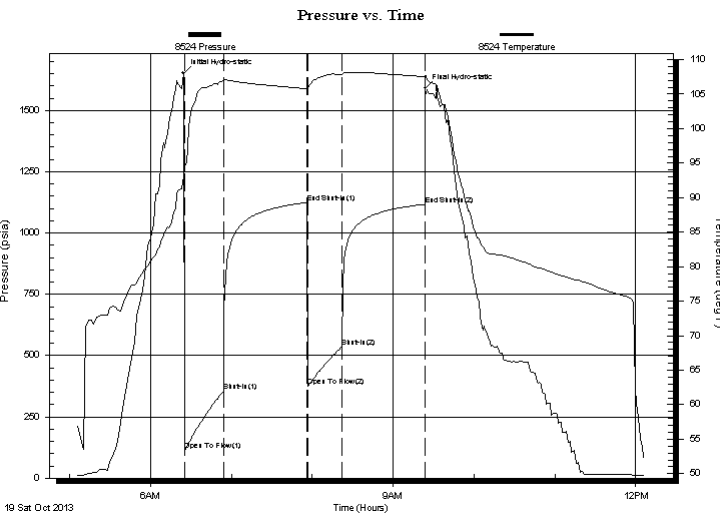
23-20s-11w Barton
Kasselman #8
 Job Ticket: 18571 **DST#: 7**
 Test Start: 2013.10.18 @ 05:05:00

GENERAL INFORMATION:

Formation: **Arbuckle**
 Deviated: No Whipstock: ft (KB)
 Test Type: Conventional Bottom Hole (Initial)
 Time Tool Opened: 06:25:30 Tester: Dustin Ellis
 Time Test Ended: 12:07:30 Unit No: 3315-Great Bend-42
 Interval: **3317.00 ft (KB) To 3360.00 ft (KB) (TVD)** Reference Elevations: 1764.00 ft (KB)
 Total Depth: 3360.00 ft (KB) (TVD) 1754.00 ft (CF)
 Hole Diameter: 7.88 inches Hole Condition: Fair KB to GR/CF: 10.00 ft

Serial #: 8524 Inside
 Press @ Run Depth: 1117.15 psia @ 3356.00 ft (KB) Capacity: 5000.00 psia
 Start Date: 2013.10.19 End Date: 2013.10.19 Last Calib.: 2013.10.19
 Start Time: 05:05:00 End Time: 12:06:30 Time On Btm: 2013.10.19 @ 06:24:30
 Time Off Btm: 2013.10.19 @ 09:24:00

TEST COMMENT: 1st Open 30 minutes Strong blow blew off bottom bucket 2.5 minutes.
 1st Shut in 60 minutes No blow back
 2nd Open 30 minutes Strong blow built to the bottom of a 5 gallon bucket of water in 2.5 minutes.
 2nd Shut in 60 minutes Yes blow back



PRESSURE SUMMARY

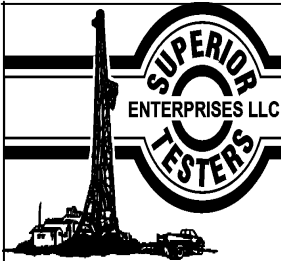
Time (Min.)	Pressure (psia)	Temp (deg F)	Annotation
0	1651.95	93.01	Initial Hydro-static
1	112.67	94.43	Open To Flow (1)
30	355.20	106.99	Shut-In(1)
92	1124.31	105.77	End Shut-In(1)
93	374.59	105.92	Open To Flow (2)
118	535.15	107.91	Shut-In(2)
179	1117.15	107.53	End Shut-In(2)
180	1590.47	107.64	Final Hydro-static

Recovery

Length (ft)	Description	Volume (bbl)
427.00	Gassy oil cut mud	4.92
0.00	Oil 3 % Gas 20% Mud 77%	0.00
305.00	Gassy oil cut muddy w ater	4.28
0.00	Oil 2% Gas 10% Mud 43% Water 45%	0.00
427.00	Oil spotted gassy w ater	5.99
0.00	Gas 20% Water 80%	0.00

Gas Rates

	Choke (inches)	Pressure (psia)	Gas Rate (Mcf/d)



DRILL STEM TEST REPORT

Trans Pacific Oil Company
 100 South Main Suite 200
 Wichita, Kansas 67206-3735
 ATTN: Jeff Lawler

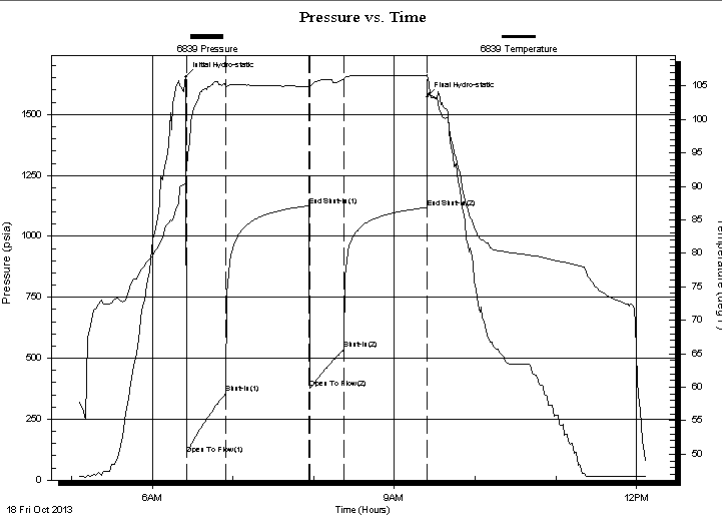
23-20s-11w Barton
Kasselman #8
 Job Ticket: 18571 **DST#: 7**
 Test Start: 2013.10.18 @ 05:05:00

GENERAL INFORMATION:

Formation: **Arbuckle**
 Deviated: No Whipstock: ft (KB)
 Test Type: Conventional Bottom Hole (Initial)
 Time Tool Opened: 06:25:30 Tester: Dustin Ellis
 Time Test Ended: 12:07:30 Unit No: 3315-Great Bend-42
 Interval: **3317.00 ft (KB) To 3360.00 ft (KB) (TVD)** Reference Elevations: 1764.00 ft (KB)
 Total Depth: 3360.00 ft (KB) (TVD) 1754.00 ft (CF)
 Hole Diameter: 7.88 inches Hole Condition: Fair KB to GR/CF: 10.00 ft

Serial #: 6839 Outside
 Press @ Run Depth: 535.97 psia @ 3357.00 ft (KB) Capacity: 5000.00 psia
 Start Date: 2013.10.18 End Date: 2013.10.18 Last Calib.: 2013.10.19
 Start Time: 05:05:00 End Time: 12:07:30 Time On Btm: 2013.10.18 @ 06:25:00
 Time Off Btm: 2013.10.18 @ 09:24:30

TEST COMMENT: 1st Open 30 minutes Strong blow blew off bottom bucket 2.5 minutes.
 1st Shut in 60 minutes No blow back
 2nd Open 30 minutes Strong blow built to the bottom of a 5 gallon bucket of water in 2.5 minutes.
 2nd Shut in 60 minutes Yes blow back



PRESSURE SUMMARY

Time (Min.)	Pressure (psia)	Temp (deg F)	Annotation
0	1653.98	91.69	Initial Hydro-static
1	104.12	92.79	Open To Flow (1)
30	354.74	104.82	Shut-In(1)
92	1125.33	104.94	End Shut-In(1)
93	375.98	104.86	Open To Flow (2)
118	535.97	106.08	Shut-In(2)
179	1118.17	106.51	End Shut-In(2)
180	1572.89	106.71	Final Hydro-static

Recovery

Length (ft)	Description	Volume (bbl)
427.00	Gassy oil cut mud	4.92
0.00	Oil 3 % Gas 20% Mud 77%	0.00
305.00	Gassy oil cut muddy water	4.28
0.00	Oil 2% Gas 10% Mud 43% Water 45%	0.00
427.00	Oil spotted gassy water	5.99
0.00	Gas 20% Water 80%	0.00

Gas Rates

Choke (inches)	Pressure (psia)	Gas Rate (Mcf/d)
----------------	-----------------	------------------



DRILL STEM TEST REPORT

Prepared For: **Trans Pacific Oil Company**

100 South Main Suite 200
Wichita, Kansas 67206-3735

ATTN: Jeff Lawler

Kasselman #8

23-20s-11w Barton

Start Date: 2013.10.18 @ 05:05:00

End Date: 2013.10.18 @ 12:07:30

Job Ticket #: 18571 DST #: 7

Superior Testers Enterprises LLC
PO Box 138 Great Bend KS 67530
1-800-792-6902

Printed: 2013.10.19 @ 00:42:26