

# ADVANTAGE ELEVATIONS

OIL FIELD SURVEYORS

BOX 8604 - PRATT, KS 67124  
(620) 672-6491

125134  
INVOICE NO.

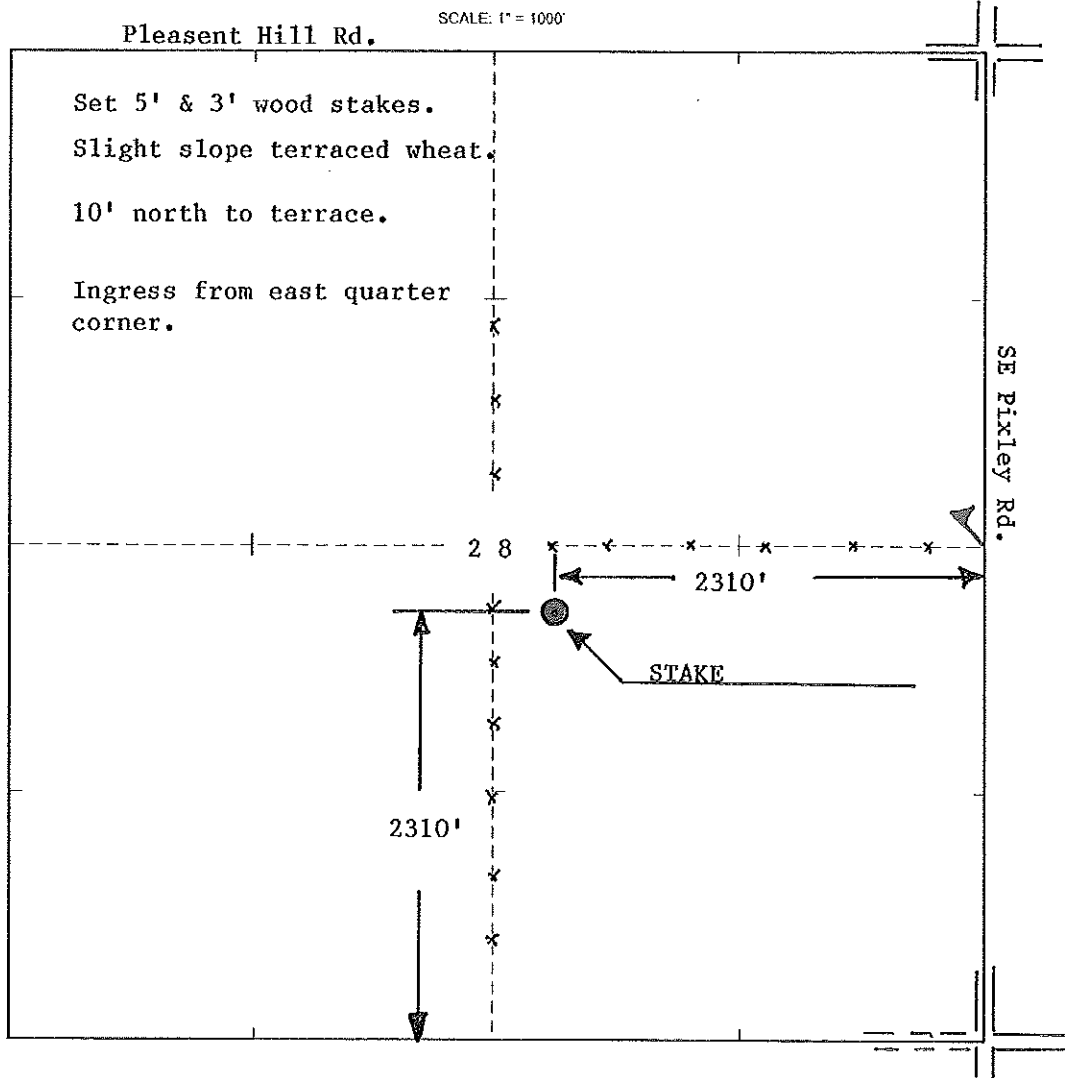
R & B OIL & GAS OPERATOR      1 NO.      LECKNER FARM

Barber COUNTY      28 S      32s T      11w R      C NW NW SE LOCATION

ELEVATION: 1490' GR

↑  
N  
R&B OIL & GAS  
PO Box 195  
Attica, KS 67009-0195

AUTHORIZED BY: Randy Newberry

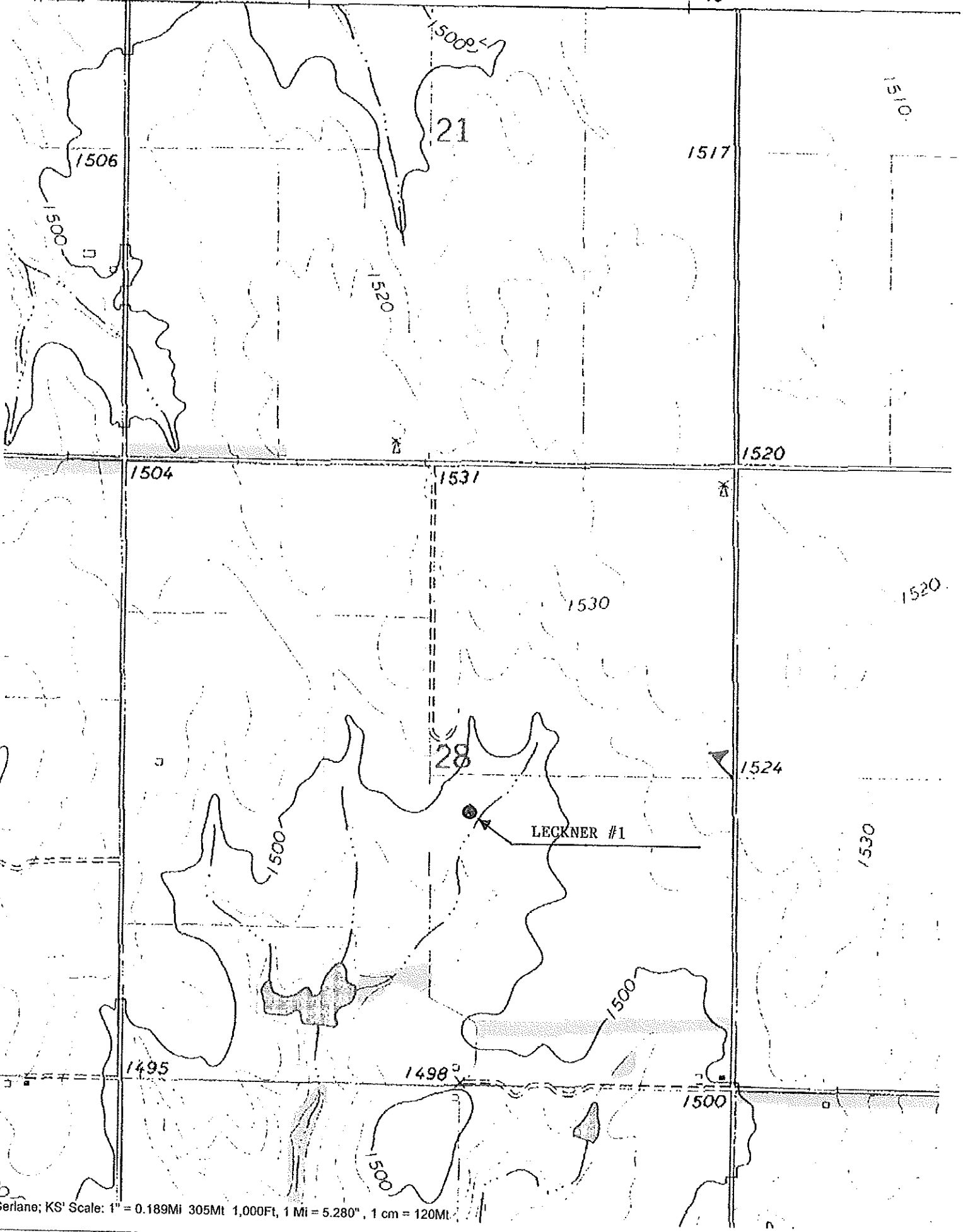


DATE STAKED: 12/5/13

1 990 000 FEET

542

543



Gerlano; KS' Scale: 1" = 0.189Mi 305Mt 1,000Ft, 1 Mi = 5.280", 1 cm = 120Mt.