



# VINCENT OIL CORPORATION



Scale 1:240 Imperial

Well Name:	Ellis 3-15	
Surface Location:	15-29S-22W	
Bottom Location:		
API:	15-047-20907	
License Number:		
Spud Date:	8/12/2013	Time: 8:45 PM
Region:		
Drilling Completed:	8/21/2013	Time: 6:34 AM
Surface Coordinates:	990 FNL & 1305 FWL	
Bottom Hole Coordinates:		
Ground Elevation:	2492.00ft	
K.B. Elevation:	2504.00ft	
Logged Interval:	0.00ft	To: 5322.00ft
Total Depth:	5324.00ft	
Formation:	MISS	
Drilling Fluid Type:	Chemical	

## OPERATOR

Company:	Vincent Oil Corp	
Address:	155 N Market Ste 700	
	Wichita, KS 67202	
Contact Geologist:	Tom Dudgeon	
Contact Phone Nbr:	316262-3573	
Well Name:	Ellis 3-15	
Location:	15-29S-22W	API: 15-047-20907
Pool:		Field:
State:	KANSAS	Country:

## CONTRACTOR

Contractor:	Duke Drilling Co.	
Rig #:	1	
Rig Type:	Rotary	
Spud Date:	8/12/2013	Time: 8:45 PM
TD Date:	8/21/2013	Time: 6:34 AM
Rig Release:	8/22/2013	Time: 2:00 PM

## ELEVATIONS

**ELEVATIONS**

K.B. Elevation: 2504.00ft  
K.B. to Ground: 12.00ft

Ground Elevation: 2492.00ft

**SURFACE CO-ORDINATES**

Well Type: Vertical  
Longitude: -99.7160238  
N/S Co-ord: 990 FNL  
E/W Co-ord: 1305 FWL

Latitude: 37.5240704

**DRILLING FLUID SUMMARY**

Type	Date	From Depth	To Depth
Chemical	8/16/2013	3794.00ft	5324.00ft

**OPEN HOLE LOGS**

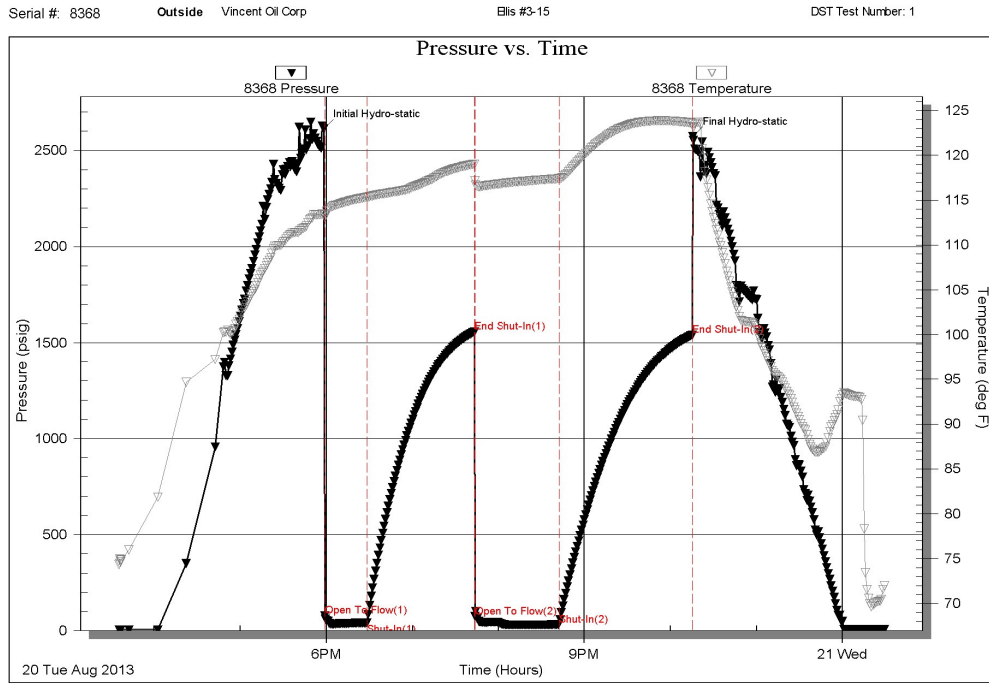
Logging Company: Nabors Completion \_Production Services Co.  
Logging Engineer: Jason Cappellucci  
Truck #: 860  
Logging Date: 8/21/2013  
# Logs Run: 4  
Time Spent: 6  
# Logs Run Successful: 4

**LOGS RUN**

Tool	Logged Interval	Logged Interval	Hours	Remarks	Run #
Dual Induction	0.00ft	5322.00ft	2.00		1
CDL/CNL/PE	4300.00ft	5322.00ft	2.00		1
MICRO	4300.00ft	5322.00ft	4.00		2
SONIC	0.00ft	5322.00ft	4.00		2

**LOGGING OPERATION SUMMARY**

Date	From	To	Description Of Operation
8/15/2013	0.00ft	0.00ft	



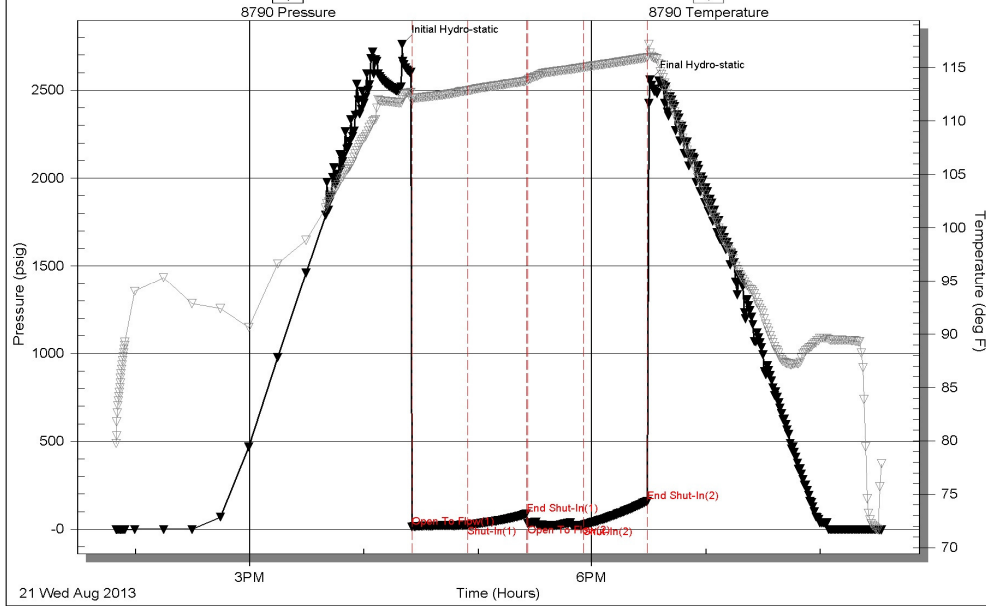
Trilobite Testing, Inc

Ref. No: 52843

Printed: 2013.08.21 @ 07:56:26

Serial #: 8790      Inside      Vincent Oil Corp      Ellis #3-15      DST Test Number: 2

**Pressure vs. Time**



Trilobite Testing, Inc

Ref. No: 52349

Printed: 2013.08.22 @ 07:58:11

### ROCK TYPES

- Coal
- Lmst fw<7
- Shblk
- Cht vari
- Dolsec
- Shgy
- Shcol

### ACCESSORIES

#### MINERAL

- ⊥ Calcareous
- ▲ Chert, dark
- ▣ Chert, tripolitic
- ∩ Glauconite
- P Pyrite
- Sandy
- △ Chert White

#### FOSSIL

- ◇ Brachiopod
- Crinoids
- F Fossils < 20%
- φ Oolite
- ▲ Spicules

#### STRINGER

- Limestone
- Sandstone
- Shale

#### TEXTURE

- C Chalky
- MX Microxln

#### DUNHAM

- MS Mudst
- WS Wackstone

#### MISC

- ▤ Veins

### OTHER SYMBOLS

#### POROSITY TYPE

- × Intercrystalline
- φ Interoolitic
- V Vuggy
- P Pinpoint
- ∩ Moldic
- O Organic
- F Fracture
- e Earthy
- ▣ Fenestral

#### OIL SHOWS

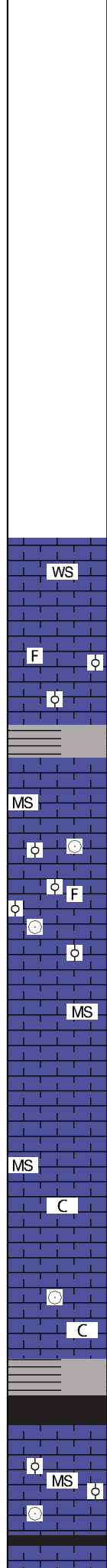
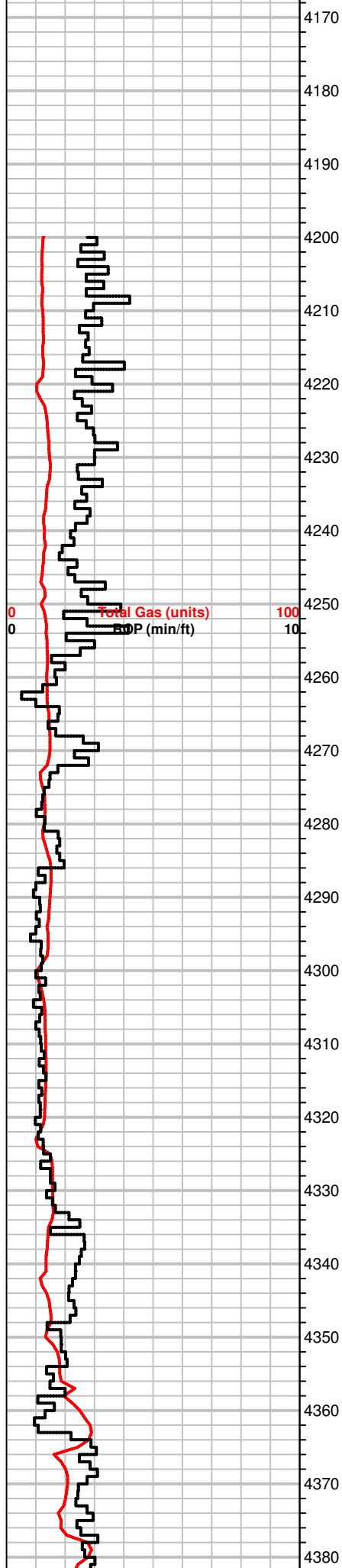
- Even Stn
- Spotted Stn 50 - 75 %
- Spotted Stn 25 - 50 %
- Spotted Stn 1 - 25 %
- Questionable Stn
- D Dead Oil Stn
- Fluorescence

#### INTERVALS

- Core
- DST

Printed by GEOstrip VC Striplog version 4.0.7.0 (www.grsi.ca)

Curve Track #01		Depth   Intervals	Porosity Types	Interpreted Lithology	Oil Shows	Geological Descriptions	Comment
Total Gas (units)	ROP (min/ft)						
1:240 Imperial		Cored Interval					
0	0	DST Interval					
0	0	4160					



MS-WS, crm to off white, f to m-xln, hard, oolitic pcs throughout, NS

MS, crm, f-xln, firm to hard, rare oolitic, some gray pcs, f-xln, firm

MS, crm to tan, f-xln, soft to firm, calcite veins  
SH, gray, green, red.  
Samples cleaning up

MS, crm, f-xln, gritty txt, some fn-oolitic pcs, rare fossilif, black specs, crinoids, rare stn in pores between ooids.

MS, crm, A.A, NS

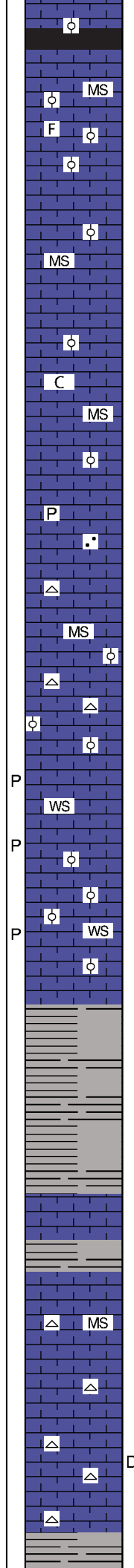
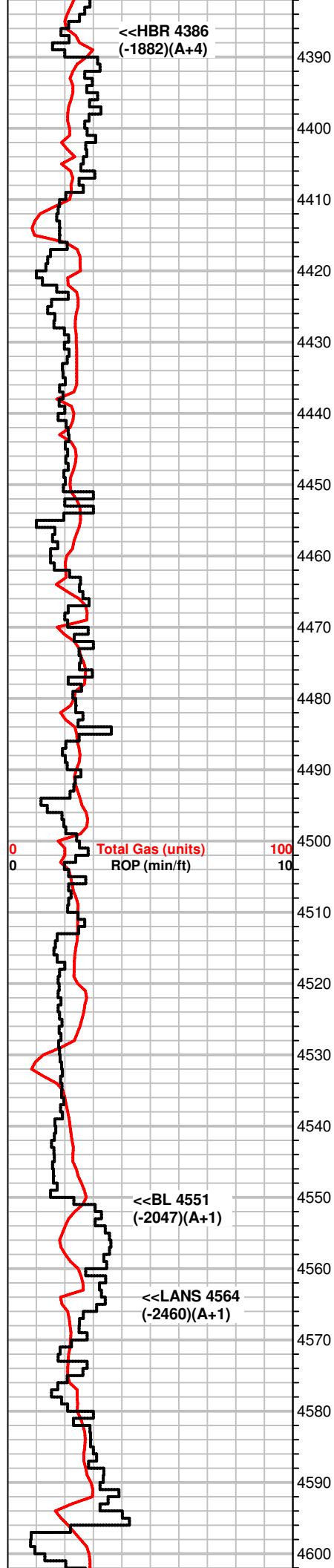
MS, crm, soft, A.A. some chalky, NS

MS crm to lt. tan, firm to soft, mic to f-xln, some chalky,  
Some SH, blk, gray

MS, crm to lt. tan, mic-xln firm, some pcs f-oolitic,

VIS 50  
Wt 9.1  
LCM 0#  
WOB 38K  
RPM 80  
SPM 52 @ 800 PSI

51  
9.2  
38000#  
75 RPM  
52 SPM @ 800PSI



SH, black, dk. brn, carb.

MS, crm to fray, f-xln, hard, dense, some foss.

MS, inc, gray, f-xln, hard, dense,

MS, off white to crm, hard, to firm, rare chalky pcs, mineral flour, NS

MS, crm, f-xln, dense, hard, sub-oolitic in part, some magnetite, pyrite present, scatt. mottled pcs

MS, brn, f-xln, hard, sli. fossilif.  
Chert, white, gray

WS, crm to brn, f-xln, mottled, oolitic to sub oolitic pcs, firm, mineral flour, NS

WS, A.A.

WS

SH, gray, green

Sh, gray

MS, brn, f-xln, dense,

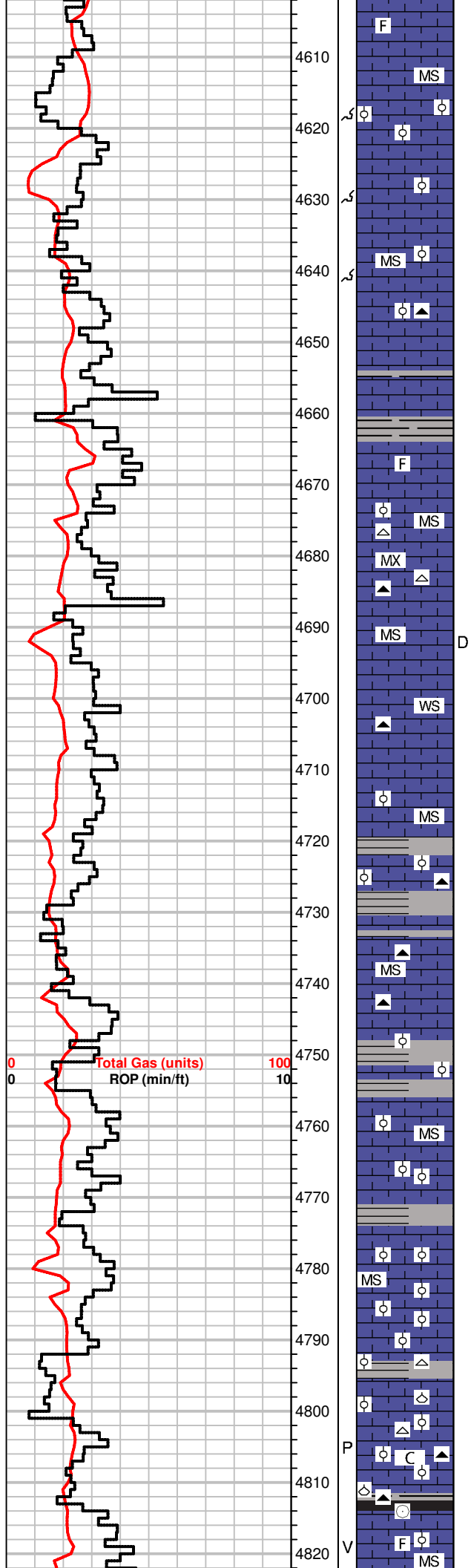
Sh, gray

MS, crm to off white, f-xln, hard, NS  
Chert, white

MS, crm to white, f-xln, hard, NS, some light edge stain in dry  
Chert, white

SH, gray

48  
9.2  
0#



4610 F

4620 MS

MS, crm to lt. gray, f-xln, firm, oomoldic,

4630 MS

MS, crm to gray, f-xln, gray pcs contain magnetite specs, some pcs sub-oolitic in nature, firm, NS, Chert, gray

4640 MS

MS, lt. gray, f-xln, hard, Some SH, gray

4650 F

MS

MS, crm to lt. brn, micro to vf-xln, dense, Chert, white, some weathered on edges

4660 MX

MS

MS-WS, crm to tan, some lt. gray, f to m-xln, hard, dense, Chert, gray

4670 WS

MS

MS, crm to lt. gray and brn, m-xln, friable, fossilif Some SH, gray Chert, gray

4680 MS

MS, crm to tan, A.A., decreasing gray SH Chert, gray

4690 D

SH, gray,

MS, crm to brn, f to m-xln, firm fossilif.

4700 MS

Some SH, gray MS, tan, vf-xln, firm fossilif, A.A.

4710 MS

MS-WS, crm, brn, f-xln, some sli. chalky mottled brn pcs w/ black specs, oolitic in part, some SH, gray Chert, white

4720 MS

MS-WS, off white to crm, f-xln, rare mic-xln, some pcs fossilif and chalky A.A. Chert, brown

4730 C

MS, lt. tan, f-xln, dense, hard, NS rare SH, black

4740 V

MS, crm. f-xln to chalky. some pcs hard. rare brn mic-oolitic pcs

56  
9.4  
1#

52  
9.25  
1#

62  
9.4  
1#

