



## DRILL STEM TEST REPORT

Prepared For: **Shelby Resources L.L.C**

2717 Canal Blvd Hays KS 67601

ATTN: Jeremy Schwartz

### **Slattery Unit #1-16**

#### **16-18-14w Barton**

Start Date: 2013.10.14 @ 08:27:00

End Date: 2013.10.14 @ 15:11:00

Job Ticket #: 18448                      DST #: 3

Superior Testers Enterprises LLC  
PO Box 138 Great Bend KS 67530  
1-800-792-6902

Printed: 2013.10.14 @ 15:25:14



# DRILL STEM TEST REPORT

Shelby Resources L.L.C  
 2717 Canal Blvd Hays KS 67601  
 ATTN: Jeremy Schwartz

**16-18-14w Barton**  
**Slattery Unit #1-16**  
 Job Ticket: 18448 **DST#: 3**  
 Test Start: 2013.10.14 @ 08:27:00

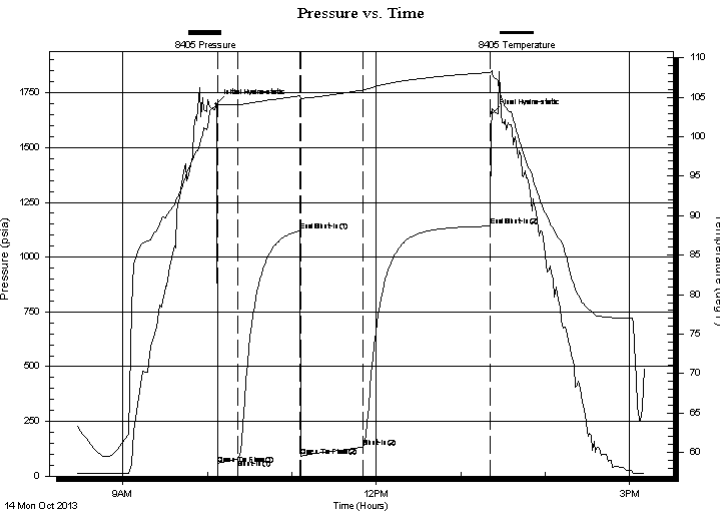
## GENERAL INFORMATION:

Formation: **Arbuckle**  
 Deviated: No Whipstock: ft (KB)  
 Test Type: Conventional Bottom Hole (Initial)  
 Time Tool Opened: 10:07:30 Tester: Jared Scheck  
 Time Test Ended: 15:11:00 Unit No: 3320-Great Bend -40  
 Interval: **3425.00 ft (KB) To 3467.00 ft (KB) (TVD)** Reference Elevations: 1956.00 ft (KB)  
 Total Depth: 3467.00 ft (KB) (TVD) 1943.00 ft (CF)  
 Hole Diameter: 7.88 inches Hole Condition: Fair KB to GR/CF: 13.00 ft

## Serial #: 8405

Press@RunDepth: 132.31 psia @ ft (KB) Capacity: 5000.00 psia  
 Start Date: 2013.10.14 End Date: 2013.10.14 Last Calib.: 2013.10.14  
 Start Time: 08:27:00 End Time: 15:11:00 Time On Btm: 2013.10.14 @ 10:06:30  
 Time Off Btm: 2013.10.14 @ 13:22:00

**TEST COMMENT:** 1st Opening 15 Minutes-Weak blow built 4 inches into bucket w ater in 15 minutes  
 1st Shut-in 45 Minutes-No blow back  
 2nd Opening 45 Minutes-Weak blow built 9 inches into bucket w ater in 45 minutes  
 2nd Shut-in 90 Minutes-Very weak surface blow



## PRESSURE SUMMARY

Time (Min.)	Pressure (psia)	Temp (deg F)	Annotation
0	1700.49	104.07	Initial Hydro-static
1	56.24	104.01	Open To Flow (1)
15	78.04	104.03	Shut-In(1)
59	1119.80	105.19	End Shut-In(1)
60	90.01	104.90	Open To Flow (2)
104	132.31	105.93	Shut-In(2)
195	1141.55	108.15	End Shut-In(2)
196	1655.77	108.42	Final Hydro-static

## Recovery

Length (ft)	Description	Volume (bbl)
20.00	oil 100%	0.10
60.00	mud oil 30% mud 70% oil	0.30
120.00	oil mud 40% oil 60% mud	0.59
0.00		0.00

## Gas Rates

	Choke (inches)	Pressure (psia)	Gas Rate (Mcf/d)



# DRILL STEM TEST REPORT

Shelby Resources L.L.C  
 2717 Canal Blvd Hays KS 67601  
 ATTN: Jeremy Schwartz

**16-18-14w Barton**  
**Slattery Unit #1-16**  
 Job Ticket: 18448 **DST#: 3**  
 Test Start: 2013.10.14 @ 08:27:00

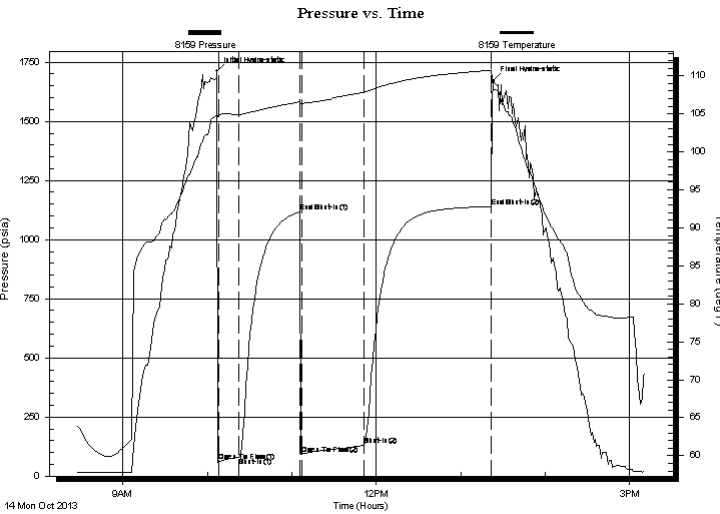
## GENERAL INFORMATION:

Formation: **Arbuckle**  
 Deviated: No Whipstock: ft (KB)  
 Test Type: Conventional Bottom Hole (Initial)  
 Time Tool Opened: 10:07:30 Tester: Jared Scheck  
 Time Test Ended: 15:11:00 Unit No: 3320-Great Bend -40  
 Interval: **3425.00 ft (KB) To 3467.00 ft (KB) (TVD)** Reference Elevations: 1956.00 ft (KB)  
 Total Depth: 3467.00 ft (KB) (TVD) 1943.00 ft (CF)  
 Hole Diameter: 7.88 inches Hole Condition: Fair KB to GR/CF: 13.00 ft

## Serial #: 8159

Press@RunDepth: 1139.87 psia @ ft (KB) Capacity: 5000.00 psia  
 Start Date: 2013.10.14 End Date: 2013.10.14 Last Calib.: 2013.10.14  
 Start Time: 08:27:00 End Time: 15:10:30 Time On Btm: 2013.10.14 @ 10:07:00  
 Time Off Btm: 2013.10.14 @ 13:23:00

**TEST COMMENT:** 1st Opening 15 Minutes-Weak blow built 4 inches into bucket w ater in 15 minutes  
 1st Shut-in 45 Minutes-No blow back  
 2nd Opening 45 Minutes-Weak blow built 9 inches into bucket w ater in 45 minutes  
 2nd Shut-in 90 Minutes-Very weak surface blow



## PRESSURE SUMMARY

Time (Min.)	Pressure (psia)	Temp (deg F)	Annotation
0	1712.22	104.78	Initial Hydro-static
2	62.41	104.87	Open To Flow (1)
15	78.91	104.93	Shut-In(1)
59	1116.86	106.59	End Shut-In(1)
60	92.85	106.37	Open To Flow (2)
104	130.28	107.86	Shut-In(2)
195	1139.87	110.72	End Shut-In(2)
196	1671.46	108.38	Final Hydro-static

## Recovery

Length (ft)	Description	Volume (bbl)
20.00	oil 100%	0.10
60.00	mud oil 30% mud 70% oil	0.30
120.00	oil mud 40% oil 60% mud	0.59
0.00		0.00

## Gas Rates

	Choke (inches)	Pressure (psia)	Gas Rate (Mcf/d)



# DRILL STEM TEST REPORT

**TOOL DIAGRAM**

Shelby Resources L.L.C  
 2717 Canal Blvd Hays KS 67601  
 ATTN: Jeremy Schwartz

**16-18-14w Barton**  
**Slattery Unit #1-16**  
 Job Ticket: 18448      **DST#: 3**  
 Test Start: 2013.10.14 @ 08:27:00

**Tool Information**

Drill Pipe:	Length: 3085.00 ft	Diameter: 3.80 inches	Volume: 43.27 bbl	Tool Weight: 1000.00 lb
Heavy Wt. Pipe:	Length: 0.00 ft	Diameter: 0.00 inches	Volume: 0.00 bbl	Weight set on Packer: 20000.00 lb
Drill Collar:	Length: 330.00 ft	Diameter: 2.25 inches	Volume: 1.62 bbl	Weight to Pull Loose: 85000.00 lb
			<u>Total Volume: 44.89 bbl</u>	Tool Chased 1.00 ft
Drill Pipe Above KB:	18.00 ft			String Weight: Initial 70000.00 lb
Depth to Top Packer:	3425.00 ft			Final 70000.00 lb
Depth to Bottom Packer:	ft			
Interval between Packers:	42.00 ft			
Tool Length:	70.00 ft			
Number of Packers:	2	Diameter: 6.75 inches		

Tool Comments:

Tool Description	Length (ft)	Serial No.	Position	Depth (ft)	Accum. Lengths
Shut-In Tool	5.00			3402.00	
Hydraulic Tool	5.00			3407.00	
Jars	6.00			3413.00	
Safety Joint	2.00			3415.00	
Packer	5.00			3420.00	28.00      Bottom Of Top Packer
Packer	5.00			3425.00	
Anchor	37.00			3462.00	
Recorder	1.00	8405	Inside	3463.00	
Recorder	1.00	8159	Outside	3464.00	
Bullnose	3.00			3467.00	42.00      Bottom Packers & Anchor
<b>Total Tool Length:</b>	<b>70.00</b>				



# DRILL STEM TEST REPORT

## FLUID SUMMARY

Shelby Resources L.L.C  
 2717 Canal Blvd Hays KS 67601  
 ATTN: Jeremy Schwartz

**16-18-14w Barton**  
**Slattery Unit #1-16**  
 Job Ticket: 18448      **DST#: 3**  
 Test Start: 2013.10.14 @ 08:27:00

### Mud and Cushion Information

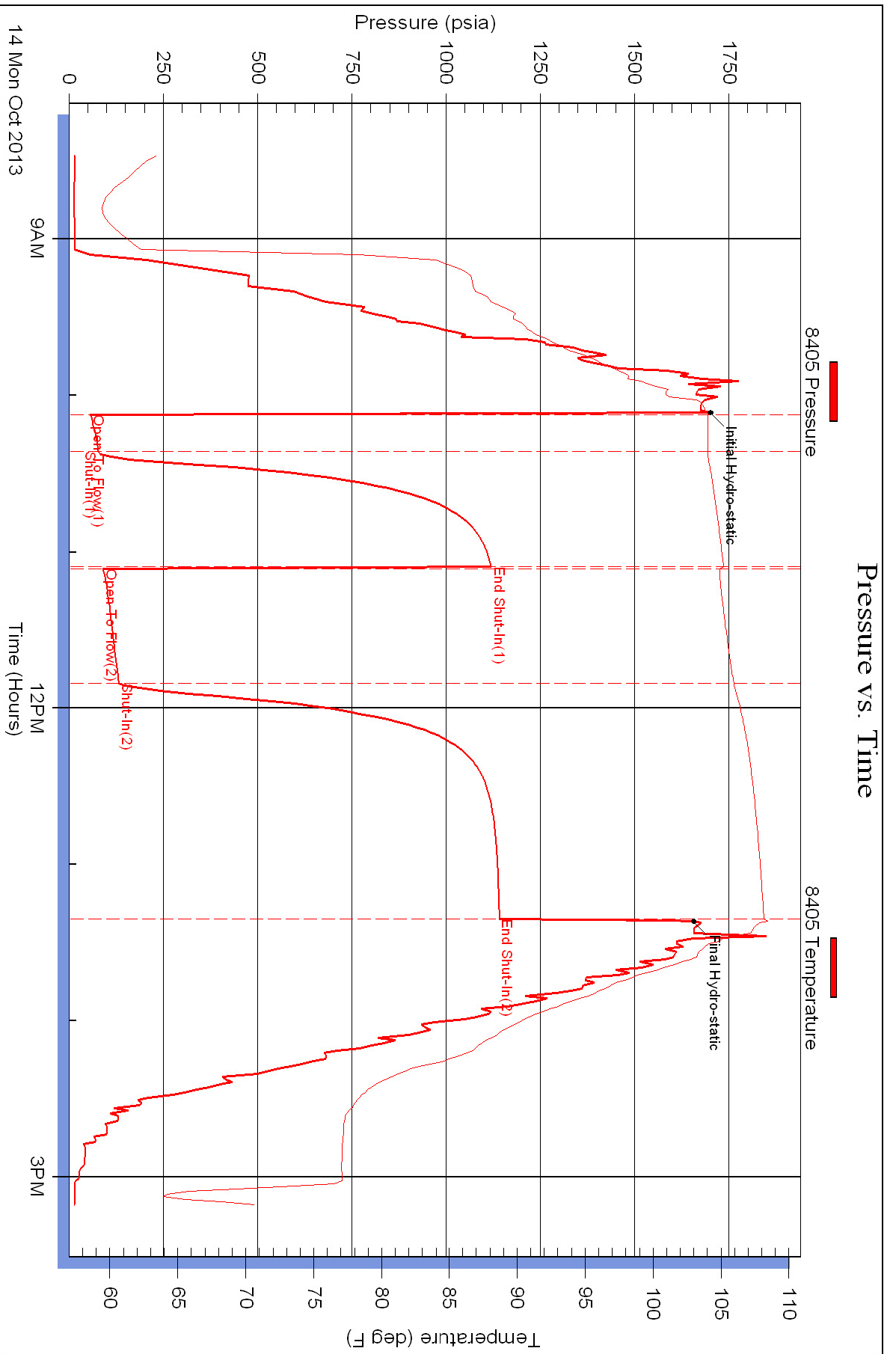
Mud Type: Gel Chem	Cushion Type:	Oil API:	deg API
Mud Weight: 9.00 lb/gal	Cushion Length: ft	Water Salinity:	ppm
Viscosity: 54.00 sec/qt	Cushion Volume: bbl		
Water Loss: 7.20 in <sup>3</sup>	Gas Cushion Type:		
Resistivity: ohm.m	Gas Cushion Pressure: psia		
Salinity: 4000.00 ppm			
Filter Cake: 1.00 inches			

### Recovery Information

Recovery Table

Length ft	Description	Volume bbl
20.00	oil 100%	0.098
60.00	mud oil 30% mud 70% oil	0.295
120.00	oil mud 40% oil 60% mud	0.590
0.00		0.000

Total Length: 200.00 ft      Total Volume: 0.983 bbl  
 Num Fluid Samples: 0      Num Gas Bombs: 0      Serial #:  
 Laboratory Name:      Laboratory Location:  
 Recovery Comments:



# Pressure vs. Time

