

Marc Downing
 Consulting Petroleum Geologist
 1411 Washington Circle
 Hays, KS 67601
 Phone: 620-428-1356 (cell) 785-621-2286

GEOLOGIC REPORT LOG

COMPANY H&C Oil Operating, Inc.
WELL Delbert Walt #13-2
FIELD Gurk
LOCATION 1980' FNL + 1650' FEL
SEC. 13 **TWP.** 10s **RGE.** 26w
COUNTY Sheridan
STATE Kansas

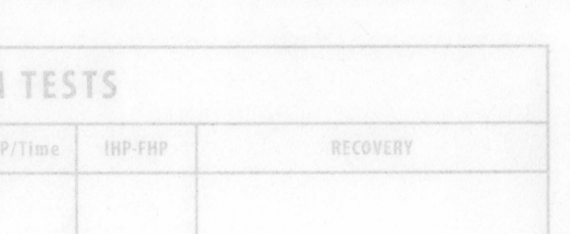
OPERATOR H&C Oil Operating, Inc.
TRACTOR American Eagle, Rig #2
COMP.

CASING RECORD
SURF. 4 5/8" @ 222'
PROD. 5 1/2" @ 4104'
TOTAL DEPTH DRILLERS: 4105'
TOTAL DEPTH LOG: 4104'

PRODUCTION LKC
ELEVATION KB 2569
DF
GL 2562

Drilling Measured From: KB
 Samples Saved From: 3750 To: TD
 Drilling Time From: 3450 To: TD
 Samples Examined From: 3750 To: TD
 Geological Supervision From: 3450 To Total Depth
 Wellsite Geologist: Marc Downing
 Electrical Survey: Pioneer

CNL/CDL
DIL
MEL



FORMATION TOPS AND STRUCTURAL POSITION

FORMATION	SAMPLE TOP	ELECTRIC LOG TOP	SUB-SEA BASE	STRUCTURAL POSITION
Top Anhydrite		2180	+343	+1
Base Anhydrite		2220	+349	+2
Tapoka	3567	3564	-995	-2
HEEBNER	3786	3777	-1208	-1
Taranto	3803	3800	-1231	-3
LKC	3822	3819	-1250	-5
BKC	4053	4049	-1490	-4

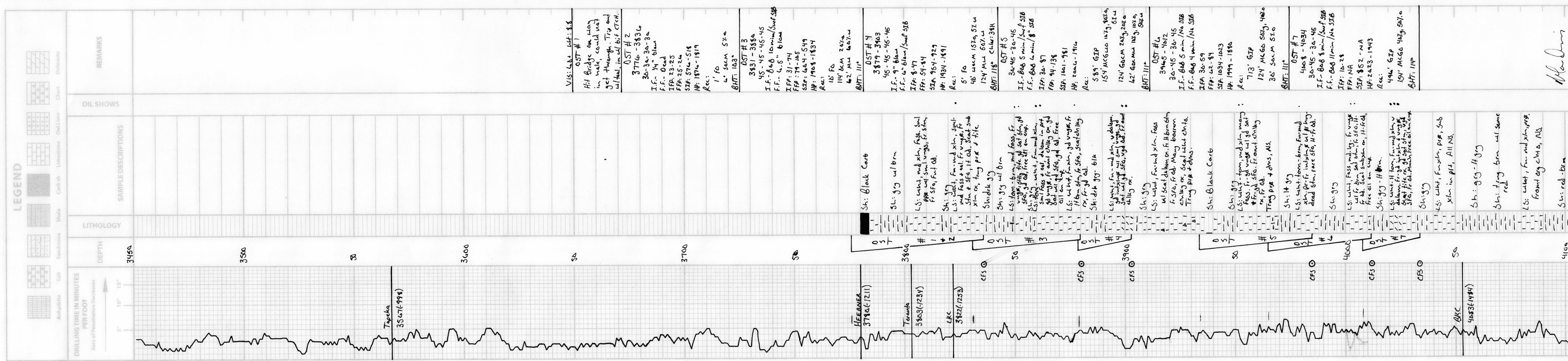
REFERENCE WELL FOR STRUCTURE H&C Oil Operating, Inc.
 Delbert Walt #13-1 2641' FNL + 2200' FEL Sec. 13-10s-26w

DRILL STEM TESTS

No.	Interval	IFP/Time	ISIP/Time	FFP/Time	FSIP/Time	IHP-FHP	RECOVERY

REMARKS AND RECOMMENDATIONS Due to structural position, DST recovery, + log evaluation, it was decided to set 5 1/2" production casing for completion.

Perforate:
 LKC K: 4014-21
 J: 3995-4004
 H: 3950-56
 D: 3855-58
 C: 3847-49



M. Downing