

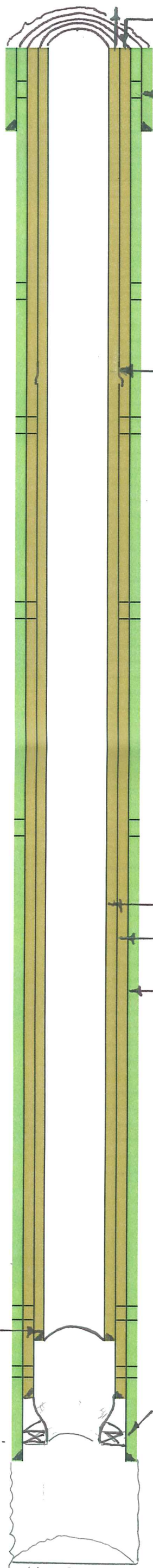
BRAULT 1 SWD

6/2012

15-065-02502

CEMENT CIRCULATED WHILE PUMPING LOWER AND UPPER STAGE

NE NE SE 14-9S-21W
GRAHAM COUNTY



6/12 PUMPED 125 SX CEMENT AFTER PUMPING LOWER STAGE. CIRCULATED GOOD CEMENT OUT 3 1/2" - 5 1/2" ANNULUS.

10 3/4" @ 270' WITH 150 SX
10/50 PERFORATED 7" AT 99' SQUEEZED 50 SX. CIRCULATED CEMENT TO SURFACE.

10/50 PERF 7" AT 779'. SQUEEZE WITH 250 SX

6/12 RAN NEW 5 1/2" 14# CASING TO 964'.

6/12 PERF 5 1/2" AT 1200' PRIOR TO RUNNING 3 1/2"

6/12 PERF 5 1/2" AT 1700' PRIOR TO RUNNING 3 1/2"

10/50 PERF 7" AT 2200'. SQUEEZE WITH 500 SX

3 1/2" CERAMKOTE TUBING

5 1/2" CEMENT LINED

7" CASING

6/12 PERF 5 1/2" PRIOR TO RUNNING 3 1/2"

5/12 PERF 5 1/2" AT 3655. SPOT 20 SX CEMENT MODEL D A 3665'.

7" @ 3839' WITH 500 SX

6/12 SET 3 1/2" CERAMKOTE AT 3645' WITH 450 SX.

CEMENT CIRCULATED TO SURFACE OUT 3 1/2" - 5 1/2" ANNULUS. PUMPED ADDITIONAL 125 SX FROM SURFACE. ARB

■ - 1950S CEMENT

■ - 2012 CEMENT

4222