

LINN OPERATING INC. F.J. SCHMITZ #4 ATU-182

205' FSL

195' FEL

SE/4 OF SE/4 OF SE/4 OF SE/4 OF

SECTION 3, T-27-S, R-38-W

LATITUDE: 37°43'20.60134" N

LONGITUDE: 101°27'16.54775" W

GROUND ELEVATION: 3141.2'



Keller  
Surveying &  
Mapping

2330 B LAKEVIEW DRIVE  
AMARILLO, TEXAS 79109  
PH: (808)418-6253

DRAWN BY: MTK

APPROVED BY: JOK

SCALE: 1" = 200'

DATE: 11/15/13



HABBPAGLINE

2225 W. OKLAHOMA AVE.

OLYSSSES KANSAS 67880

PH: (620)356-6940

FAX: (620)356-6950

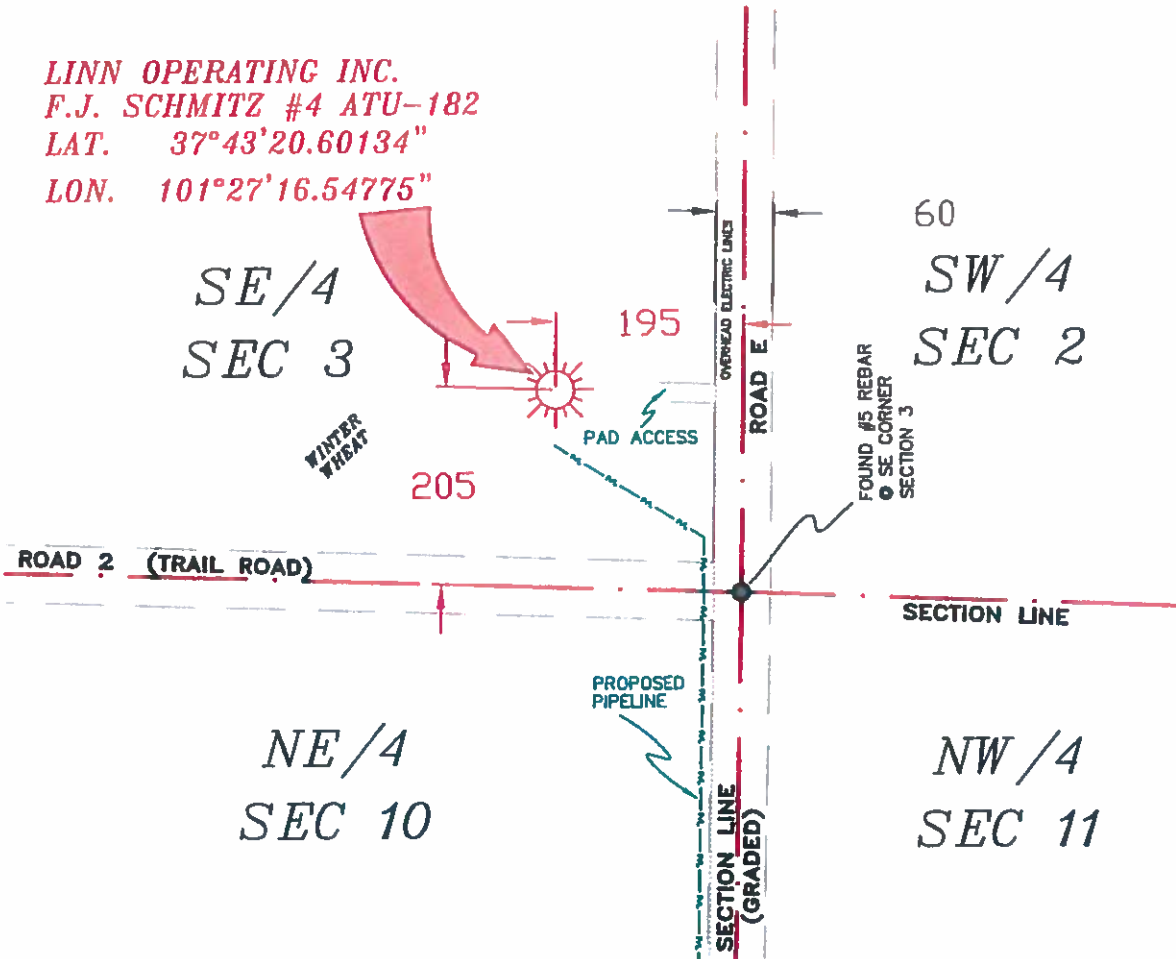
### DRIVING DIRECTIONS:

BEGINNING AT INTERSECTION OF US HWY 160 & HWY 25

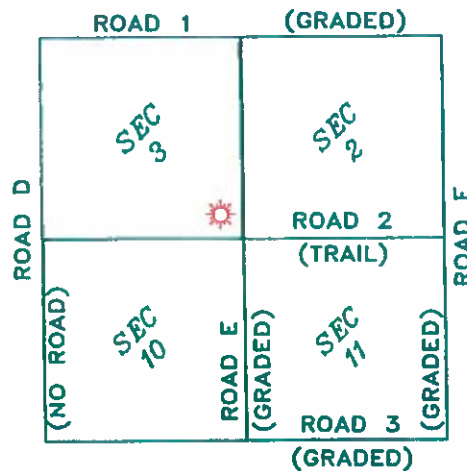
- 1) 9 MILES NORTH ON HWY 25
- 2) 5 MILES WEST ON ROAD 3
- 3) 1 MILE NORTH ON ROAD E
- 3) WELL AT INTERSECTION OF ROAD 2 & E



LINN OPERATING INC.  
F.J. SCHMITZ #4 ATU-182  
LAT. 37°43'20.60134"  
LON. 101°27'16.54775"



- NOTES:
- 1) THIS PLAN DOES NOT REPRESENT A TRUE BOUNDARY SURVEY. THE FOOTINGS AND TIES SHOWN ARE FROM LINES OF OCCUPATION WHICH MAY NOT BE ACTUAL PROPERTY LINES.
  - 2) CONTRACTOR TO CONTACT ONE-CALL FOR FOREIGN UTILITY LOCATIONS PRIOR TO ANY EXCAVATION OR CONSTRUCTION.
  - 3) NAD 27 LAT-LONG



LINN OPERATING INC.  
F.J. SCHMITZ #4 ATU-182  
SECTIONS 2, 3, 10 & 11,  
T-27-S R-38-W,  
GRANT COUNTY, KANSAS

LINN OPERATING INC.  
F.J. SCHMITZ #4 ATU-182  
SECTIONS 2, 3, 10 & 11,  
T-27-S R-38-W,  
GRANT COUNTY, KANSAS



JOHN DAVID KELLER, L.S. NO. 1518

**PLAT AND CERTIFICATION OF ACREAGE ATTRIBUTABLE TO A GAS WELL**

Kansas Corporation Commission, Conservation Division  
 Finney State Office Building, 130 South Market, Room 2078  
 Wichita, Kansas 67202

API NUMBER 15- \_\_\_\_\_

OPERATOR LINN Operating, Inc.  
 LEASE F.J. Schmitz  
 WELL NUMBER 4 ATU-182  
 FIELD Hugoton-Panoma

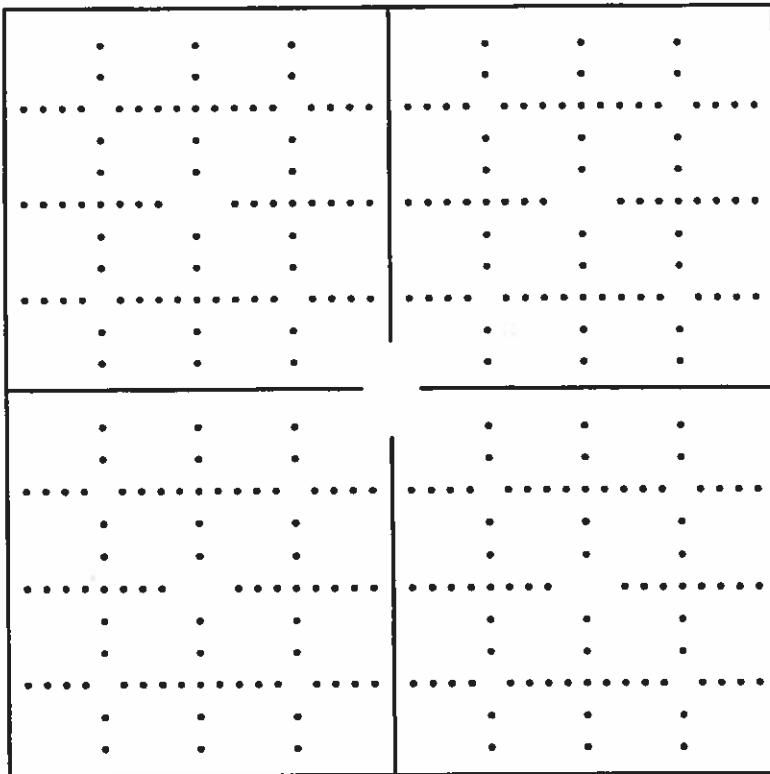
LOCATION OF WELL: COUNTY Grant

205 S feet from south/north line of section  
195 E feet from east / west line of section

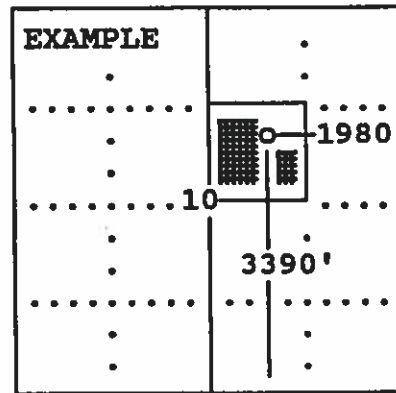
NUMBER OF ACRES ATTRIBUTABLE TO WELL 640  
 QTR/QTR/QTR OF ACREAGE SE - SE - SE

SECTION 3 TWP 27 (S) RG 38W E/W  
 IS SECTION X REGULAR or IRREGULAR  
 IF SECTION IS IRREGULAR, LOCATE WELL FROM  
 NEAREST CORNER BOUNDARY. (check line below)  
 Section corner used: NE NW SE SW

(Show the location of the well and shade attributable acreage for prorated or spaced wells).  
 (Show the footage to the nearest lease or unit boundary line; and show footage to the nearest common source supply well).



*see attached map*



The undersigned hereby certifies as Regulatory Compliance Advisor (title) for  
LINN Operating, Inc. (Co.), a duly authorized agent, that all

information shown hereon is true and correct to the best of my knowledge and belief, that all acreage claimed attributable to the well named herein is held by production from that well and hereby make application for an allowable to be assigned to the well upon the filing of this form and the State test, whichever is later.

Signature *Shawn Hines*

Subscribed and sworn to before me on this 10th day of December, 19 2013



*Mindy Potor*  
 Notary Public

My Commission expires

FORM CG-8 (12/94)

WGP-KHC, LLC  
NM 1  
TD 240

LINN OPERATING INC  
FRANK J. SCHMITZ 3  
CHASE 1  
TD 2,664

LINN OPERATING INC  
F.J. SCHMITZ UNIT 2  
COUNCIL GROVE 1  
TD 2,890

LINN OPERATING INC  
WAECHTER GU C-2  
COUNCIL GROVE 1  
TD 2,863

LINN OPERATING INC  
WAECHTER GU C-3HI  
CHASE 1  
TD 2,633

3

LINN OPERATING INC  
FRANK J. SCHMITZ 1  
CHASE 1  
TD 1,596

2

LINN OPERATING INC  
WAECHTER GU C-1  
CHASE 1  
TD 2,620

27S 38W

ATU WELL

LINN OPERATING INC  
SMITH B-4  
CHASE 1  
TD 3,000

EOR

LINN OPERATING INC  
SMITH GU B-3HI  
CHASE 1  
TD 2,607

10

LINN OPERATING INC  
SMITH GU B-1  
CHASE 1  
TD 2,594

11

LINN OPERATING INC  
WAECHTER GU E-1  
CHASE 1  
TD 2,570

LINN OPERATING INC  
SMITH GU B-2  
COUNCIL GROVE 1  
TD 2,786

LINN OPERATING INC  
WAECHTER GU E-2  
COUNCIL GROVE 1  
TD 2,824

LINN OPERATING INC  
WAECHTER GU E-3HI  
CHASE 1  
TD 2,593

PETRA 4/18/2013 10:13:15 AM

LINN Operating Inc

Hugoton Kansas

ATU Location

Grant Co. 27S-38W



WELL SYMBOLS  
ATU Well Location  
Gas Well