



DRILL STEM TEST REPORT

Prepared For: **American Warrior Inc**

PO Box 399
Garden City KS 67545

ATTN: Jim Musgrove

Eulert #18-35

35-11s-15w

Start Date: 2013.11.02 @ 01:54:44

End Date: 2013.11.02 @ 09:02:14

Job Ticket #: 52549 DST #: 1

Trilobite Testing, Inc
PO Box 362 Hays, KS 67601
ph: 785-625-4778 fax: 785-625-5620

Printed: 2013.11.07 @ 10:18:16



TRILOBITE TESTING, INC.

DRILL STEM TEST REPORT

American Warrior Inc
 PO Box 399
 Garden City KS 67545
 ATTN: Jim Musgrove

35-11s-15w
Eulert #18-35
 Job Ticket: 52549 **DST#: 1**
 Test Start: 2013.11.02 @ 01:54:44

GENERAL INFORMATION:

Formation: **LKC A-C**
 Deviated: No Whipstock: ft (KB)
 Time Tool Opened: 04:34:44
 Time Test Ended: 09:02:14
 Interval: **2904.00 ft (KB) To 3000.00 ft (KB) (TVD)**
 Total Depth: 3000.00 ft (KB) (TVD)
 Hole Diameter: 7.88 inches Hole Condition: Good
 Test Type: Conventional Bottom Hole (Initial)
 Tester: Jeff Brown
 Unit No: 67
 Reference Elevations: 1811.00 ft (KB)
 1803.00 ft (CF)
 KB to GR/CF: 8.00 ft

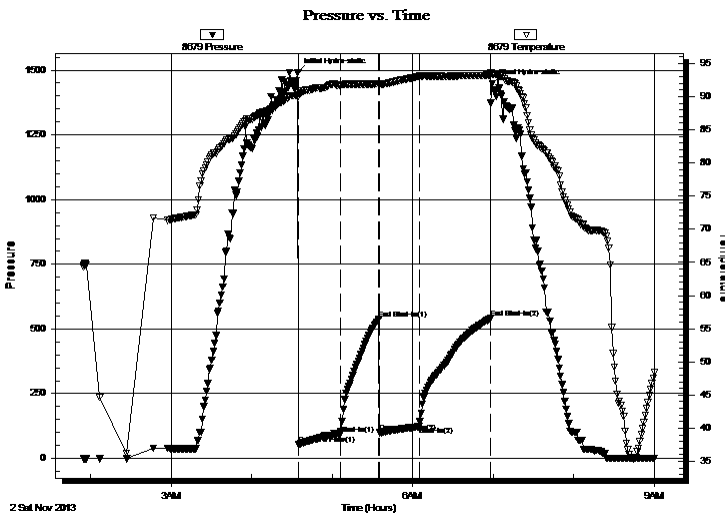
Serial #: 8679

Inside

Press @ Run Depth: 123.69 psig @ 2972.00 ft (KB) Capacity: 8000.00 psig
 Start Date: 2013.11.02 End Date: 2013.11.02 Last Calib.: 2013.11.02
 Start Time: 01:54:45 End Time: 09:00:14 Time On Btm: 2013.11.02 @ 04:34:14
 Time Off Btm: 2013.11.02 @ 06:59:14

TEST COMMENT: IFP-Good blow BOB in 9-1/2 min
 ISI-Dead no blow back
 FFP-Good blow BOB in 21 min
 FSI-Dead no blow back

PRESSURE SUMMARY



Time (Min.)	Pressure (psig)	Temp (deg F)	Annotation
0	1491.22	90.33	Initial Hydro-static
1	53.59	90.06	Open To Flow (1)
32	94.54	91.72	Shut-In(1)
61	537.34	91.95	End Shut-In(1)
61	99.68	91.77	Open To Flow (2)
91	123.69	93.05	Shut-In(2)
144	540.60	93.24	End Shut-In(2)
145	1448.46	93.37	Final Hydro-static

Recovery

Length (ft)	Description	Volume (bbl)
63.00	VSOCGWM 3%G 2%O 35%W 60%M	0.88
108.00	VSOCM 3%G 2%O 95%M	1.51
0.00	126-GIP	0.00

Gas Rates

Choke (inches)	Pressure (psig)	Gas Rate (Mcf/d)



**TRILOBITE
TESTING, INC.**

DRILL STEM TEST REPORT

TOOL DIAGRAM

American Warrior Inc
PO Box 399
Garden City KS 67545
ATTN: Jim Musgrove

35-11s-15w
Eulert #18-35
Job Ticket: 52549 **DST#: 1**
Test Start: 2013.11.02 @ 01:54:44

Tool Information

Drill Pipe:	Length: 2912.00 ft	Diameter: 3.80 inches	Volume: 40.85 bbl	Tool Weight:	2000.00 lb
Heavy Wt. Pipe:	Length: 0.00 ft	Diameter: 2.70 inches	Volume: 0.00 bbl	Weight set on Packer:	20000.00 lb
Drill Collar:	Length: 0.00 ft	Diameter: 2.25 inches	Volume: 0.00 bbl	Weight to Pull Loose:	44000.00 lb
			<u>Total Volume: 40.85 bbl</u>	Tool Chased	0.00 ft
Drill Pipe Above KB:	28.00 ft			String Weight: Initial	36000.00 lb
Depth to Top Packer:	2904.00 ft			Final	38000.00 lb
Depth to Bottom Packer:	ft				
Interval between Packers:	96.00 ft				
Tool Length:	116.00 ft				
Number of Packers:	2	Diameter: 6.88 inches			

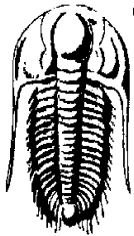
Tool Comments:

Tool Description

Length (ft) Serial No. Position Depth (ft) Accum. Lengths

Change Over Sub	1.00			2885.00	
Shut In Tool	5.00			2890.00	
Hydraulic tool	5.00			2895.00	
Packer	4.00			2899.00	20.00 Bottom Of Top Packer
Packer	5.00			2904.00	
Stubb	1.00			2905.00	
Perforations	2.00			2907.00	
Change Over Sub	1.00			2908.00	
Drill Pipe	63.00			2971.00	
Change Over Sub	1.00			2972.00	
Recorder	0.00	6625	Outside	2972.00	
Recorder	0.00	8679	Inside	2972.00	
Perforations	24.00			2996.00	
Bullnose	4.00			3000.00	96.00 Bottom Packers & Anchor

Total Tool Length: 116.00



**TRILOBITE
TESTING, INC.**

DRILL STEM TEST REPORT

FLUID SUMMARY

American Warrior Inc
PO Box 399
Garden City KS 67545
ATTN: Jim Musgrove

35-11s-15w
Eulert #18-35
Job Ticket: 52549 **DST#: 1**
Test Start: 2013.11.02 @ 01:54:44

Mud and Cushion Information

Mud Type: Gel Chem	Cushion Type:	Oil API:	deg API
Mud Weight: 9.00 lb/gal	Cushion Length: ft	Water Salinity:	ppm
Viscosity: 59.00 sec/qt	Cushion Volume: bbl		
Water Loss: 5.39 in ³	Gas Cushion Type:		
Resistivity: ohm.m	Gas Cushion Pressure: psig		
Salinity: 3600.00 ppm			
Filter Cake: inches			

Recovery Information

Recovery Table

Length ft	Description	Volume bbl
63.00	VSOCGWM 3%G 2%O 35%W 60%M	0.884
108.00	VSOCM 3%G 2%O 95%M	1.515
0.00	126-GIP	0.000

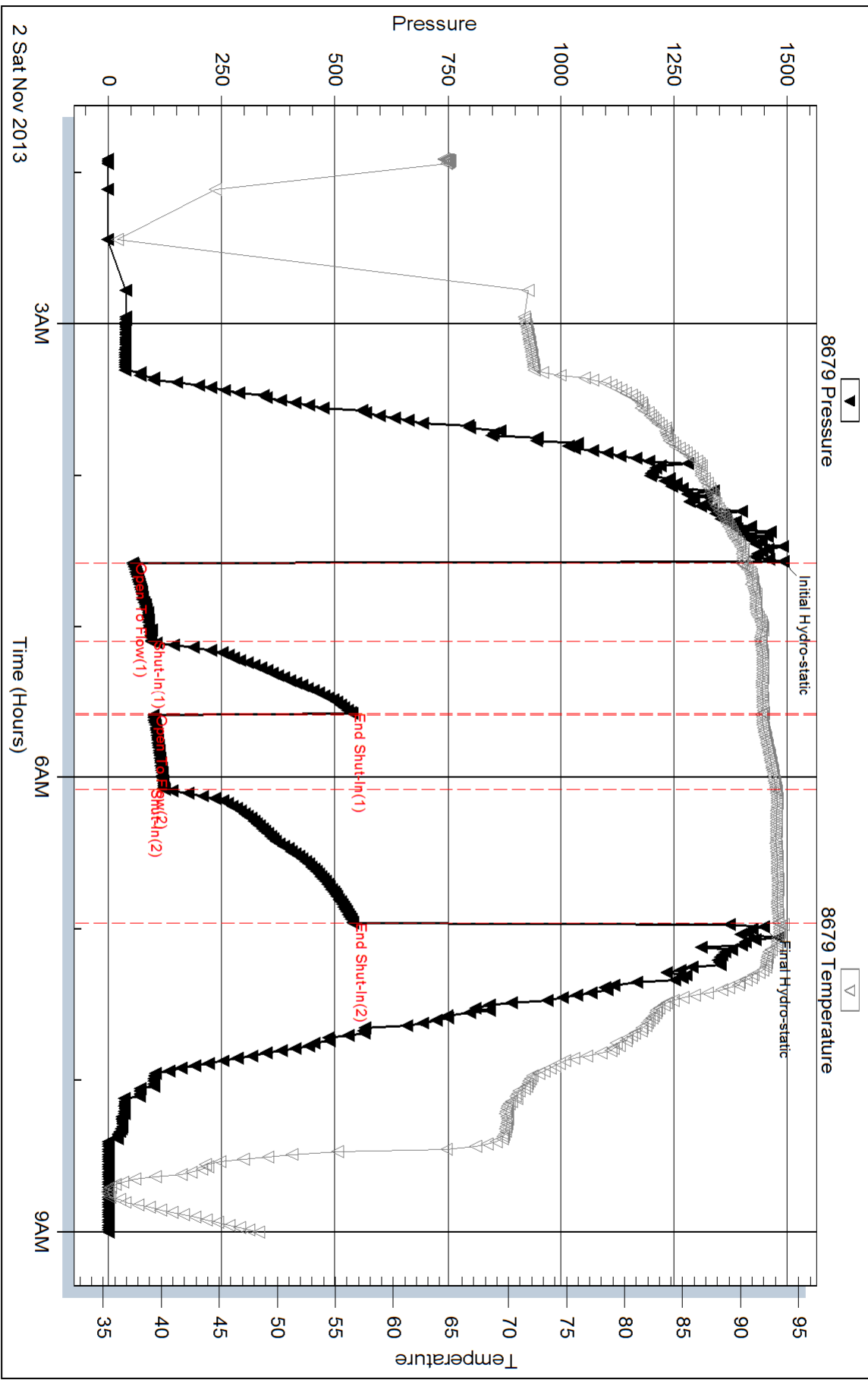
Total Length: 171.00 ft Total Volume: 2.399 bbl

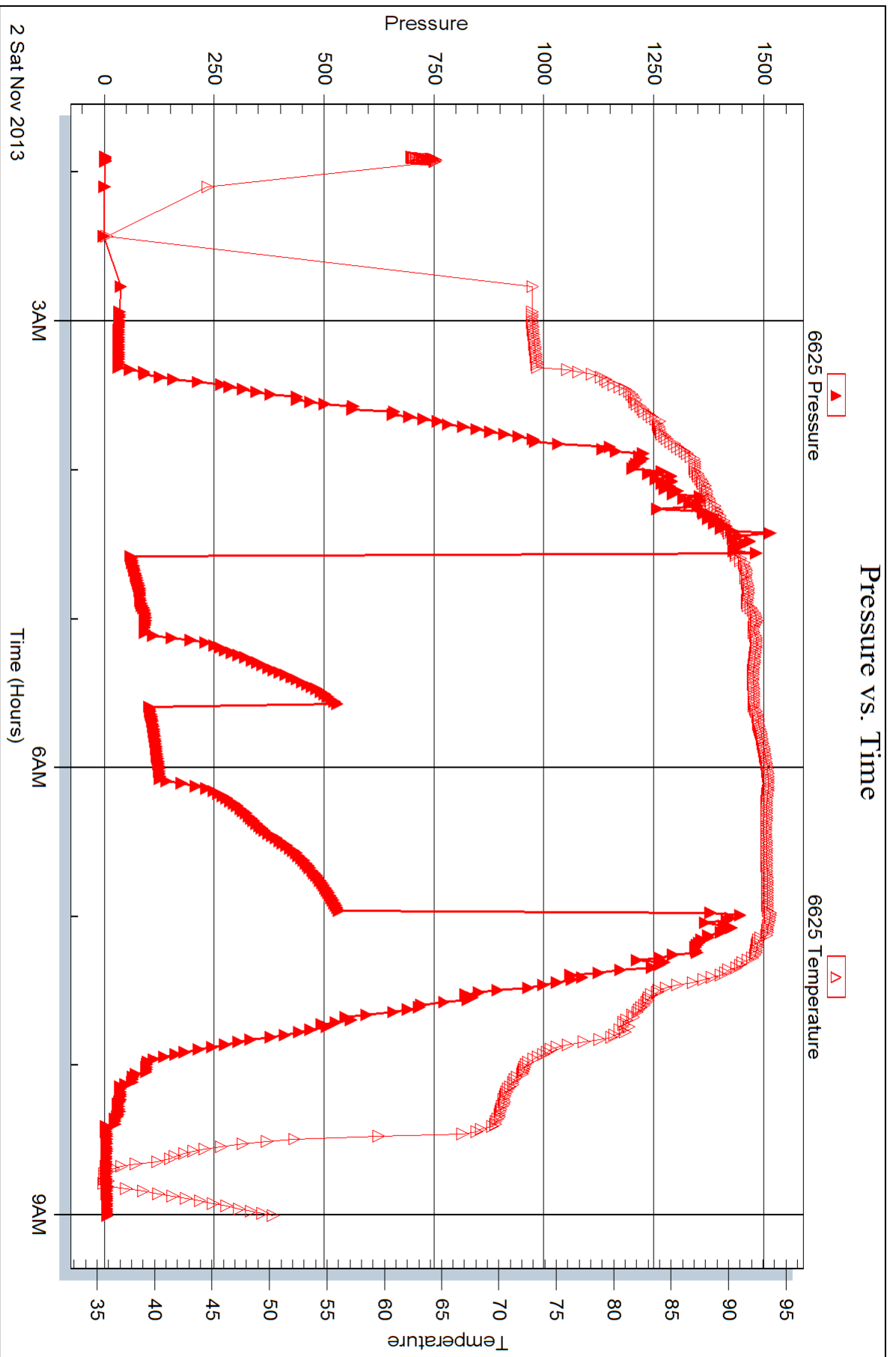
Num Fluid Samples: 0 Num Gas Bombs: 0 Serial #:

Laboratory Name: Laboratory Location:

Recovery Comments:

Pressure vs. Time







DRILL STEM TEST REPORT

Prepared For: **American Warrior Inc**

PO Box 399
Garden City KS 67545

ATTN: Jim Musgrove

Eulert #18-35

35-11s-15w

Start Date: 2013.11.02 @ 19:18:58

End Date: 2013.11.03 @ 02:48:58

Job Ticket #: 52550 DST #: 2

Trilobite Testing, Inc
PO Box 362 Hays, KS 67601
ph: 785-625-4778 fax: 785-625-5620

Printed: 2013.11.07 @ 10:16:59

American Warrior Inc
35-11s-15w
Eulert #18-35
DST # 2
LKC D
2013.11.02



TRILOBITE TESTING, INC.

DRILL STEM TEST REPORT

American Warrior Inc
 PO Box 399
 Garden City KS 67545
 ATTN: Jim Musgrove

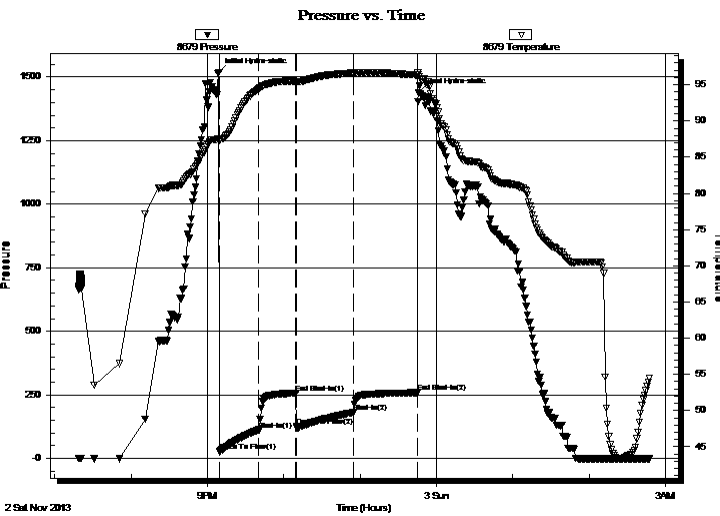
35-11s-15w
Eulert #18-35
 Job Ticket: 52550 **DST#: 2**
 Test Start: 2013.11.02 @ 19:18:58

GENERAL INFORMATION:

Formation: **LKC D**
 Deviated: No Whipstock: ft (KB)
 Time Tool Opened: 21:09:28
 Time Test Ended: 02:48:58
 Interval: **2999.00 ft (KB) To 3035.00 ft (KB) (TVD)**
 Total Depth: 3035.00 ft (KB) (TVD)
 Hole Diameter: 7.88 inches Hole Condition: Good
 Test Type: Conventional Bottom Hole (Reset)
 Tester: Jeff Brown
 Unit No: 67
 Reference Elevations: 1811.00 ft (KB)
 1803.00 ft (CF)
 KB to GR/CF: 8.00 ft

Serial #: 8679 Inside
 Press @ Run Depth: 180.60 psig @ 3002.00 ft (KB) Capacity: 8000.00 psig
 Start Date: 2013.11.02 End Date: 2013.11.03 Last Calib.: 2013.11.03
 Start Time: 19:18:59 End Time: 02:47:58 Time On Btm: 2013.11.02 @ 21:08:58
 Time Off Btm: 2013.11.02 @ 23:45:58

TEST COMMENT: IFP-Strong blow BOB in 4 1/2 min
 ISI-Fair blow Back built to 6 1/2"
 FFP-Good blow BOB in 8 min
 FSI-Fair blow back built to 5"



PRESSURE SUMMARY

Time (Min.)	Pressure (psig)	Temp (deg F)	Annotation
0	1518.21	87.58	Initial Hydro-static
1	27.62	87.32	Open To Flow (1)
31	112.29	94.40	Shut-In(1)
61	256.85	95.47	End Shut-In(1)
61	126.90	95.38	Open To Flow (2)
106	180.60	96.63	Shut-In(2)
156	259.20	96.33	End Shut-In(2)
157	1440.21	96.40	Final Hydro-static

Recovery

Length (ft)	Description	Volume (bbl)
252.00	MW with a scum of oil 10%M 90%W	3.53
63.00	VSO CMW 2%O 30%M 68%W	0.88
25.00	SOCWM 5%O 35%W 60%M	0.35
20.00	Gassy Oil 10%G 90%O	0.28
0.00	519=GIP	0.00

* Recovery from multiple tests

Gas Rates

Choke (inches)	Pressure (psig)	Gas Rate (Mcf/d)



TRILOBITE TESTING, INC.

DRILL STEM TEST REPORT

American Warrior Inc
 PO Box 399
 Garden City KS 67545
 ATTN: Jim Musgrove

35-11s-15w
Eulert #18-35
 Job Ticket: 52550 **DST#: 2**
 Test Start: 2013.11.02 @ 19:18:58

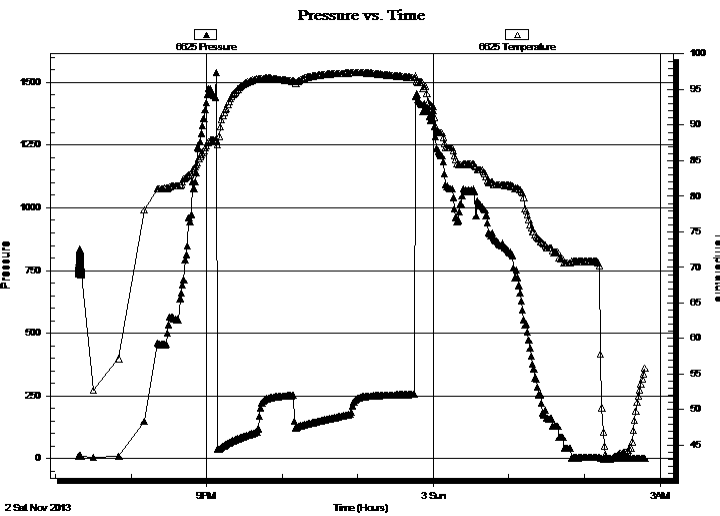
GENERAL INFORMATION:

Formation: **LKC D**
 Deviated: No Whipstock: ft (KB)
 Test Type: Conventional Bottom Hole (Reset)
 Time Tool Opened: 21:09:28 Tester: Jeff Brown
 Time Test Ended: 02:48:58 Unit No: 67
Interval: 2999.00 ft (KB) To 3035.00 ft (KB) (TVD)
 Reference Elevations: 1811.00 ft (KB)
 Total Depth: 3035.00 ft (KB) (TVD) 1803.00 ft (CF)
 Hole Diameter: 7.88 inches Hole Condition: Good KB to GR/CF: 8.00 ft

Serial #: 6625 Outside

Press @ Run Depth: psig @ 3002.00 ft (KB) Capacity: 8000.00 psig
 Start Date: 2013.11.02 End Date: 2013.11.03 Last Calib.: 2013.11.03
 Start Time: 19:18:22 End Time: 02:48:21 Time On Btm:
 Time Off Btm:

TEST COMMENT: IFP-Strong blow BOB in 4 1/2 min
 ISI-Fair blow Back built to 6 1/2"
 FFP-Good blow BOB in 8 min
 FSI-Fair blow back built to 5"



PRESSURE SUMMARY

Time (Min.)	Pressure (psig)	Temp (deg F)	Annotation

Recovery

Length (ft)	Description	Volume (bbl)
252.00	MW with a scum of oil 10%M 90%W	3.53
63.00	VSO CMW 2%O 30%M 68%W	0.88
25.00	SOC MW 5%O 35%W 60%M	0.35
20.00	Gassy Oil 10%G 90%O	0.28
0.00	519=GIP	0.00

Gas Rates

Choke (inches)	Pressure (psig)	Gas Rate (Mcf/d)

* Recovery from multiple tests



**TRILOBITE
TESTING, INC.**

DRILL STEM TEST REPORT

TOOL DIAGRAM

American Warrior Inc
PO Box 399
Garden City KS 67545
ATTN: Jim Musgrove

35-11s-15w
Eulert #18-35
Job Ticket: 52550 **DST#: 2**
Test Start: 2013.11.02 @ 19:18:58

Tool Information

Drill Pipe:	Length: 3006.00 ft	Diameter: 3.80 inches	Volume: 42.17 bbl	Tool Weight:	2000.00 lb
Heavy Wt. Pipe:	Length: 0.00 ft	Diameter: 2.70 inches	Volume: 0.00 bbl	Weight set on Packer:	20000.00 lb
Drill Collar:	Length: 0.00 ft	Diameter: 2.25 inches	Volume: 0.00 bbl	Weight to Pull Loose:	44000.00 lb
			<u>Total Volume: 42.17 bbl</u>	Tool Chased	0.00 ft
Drill Pipe Above KB:	27.00 ft			String Weight: Initial	36000.00 lb
Depth to Top Packer:	2999.00 ft			Final	38000.00 lb
Depth to Bottom Packer:	ft				
Interval between Packers:	36.00 ft				
Tool Length:	56.00 ft				
Number of Packers:	2	Diameter: 6.88 inches			

Tool Comments:

Tool Description	Length (ft)	Serial No.	Position	Depth (ft)	Accum. Lengths
-------------------------	--------------------	-------------------	-----------------	-------------------	-----------------------

Change Over Sub	1.00			2980.00	
Shut In Tool	5.00			2985.00	
Hydraulic tool	5.00			2990.00	
Packer	4.00			2994.00	20.00 Bottom Of Top Packer
Packer	5.00			2999.00	
Stubb	1.00			3000.00	
Perforations	2.00			3002.00	
Recorder	0.00	6625	Outside	3002.00	
Recorder	0.00	8679	Inside	3002.00	
Perforations	29.00			3031.00	
Bullnose	4.00			3035.00	36.00 Bottom Packers & Anchor

Total Tool Length: 56.00



**TRILOBITE
TESTING, INC.**

DRILL STEM TEST REPORT

FLUID SUMMARY

American Warrior Inc
PO Box 399
Garden City KS 67545
ATTN: Jim Musgrove

35-11s-15w
Eulert #18-35
Job Ticket: 52550 **DST#: 2**
Test Start: 2013.11.02 @ 19:18:58

Mud and Cushion Information

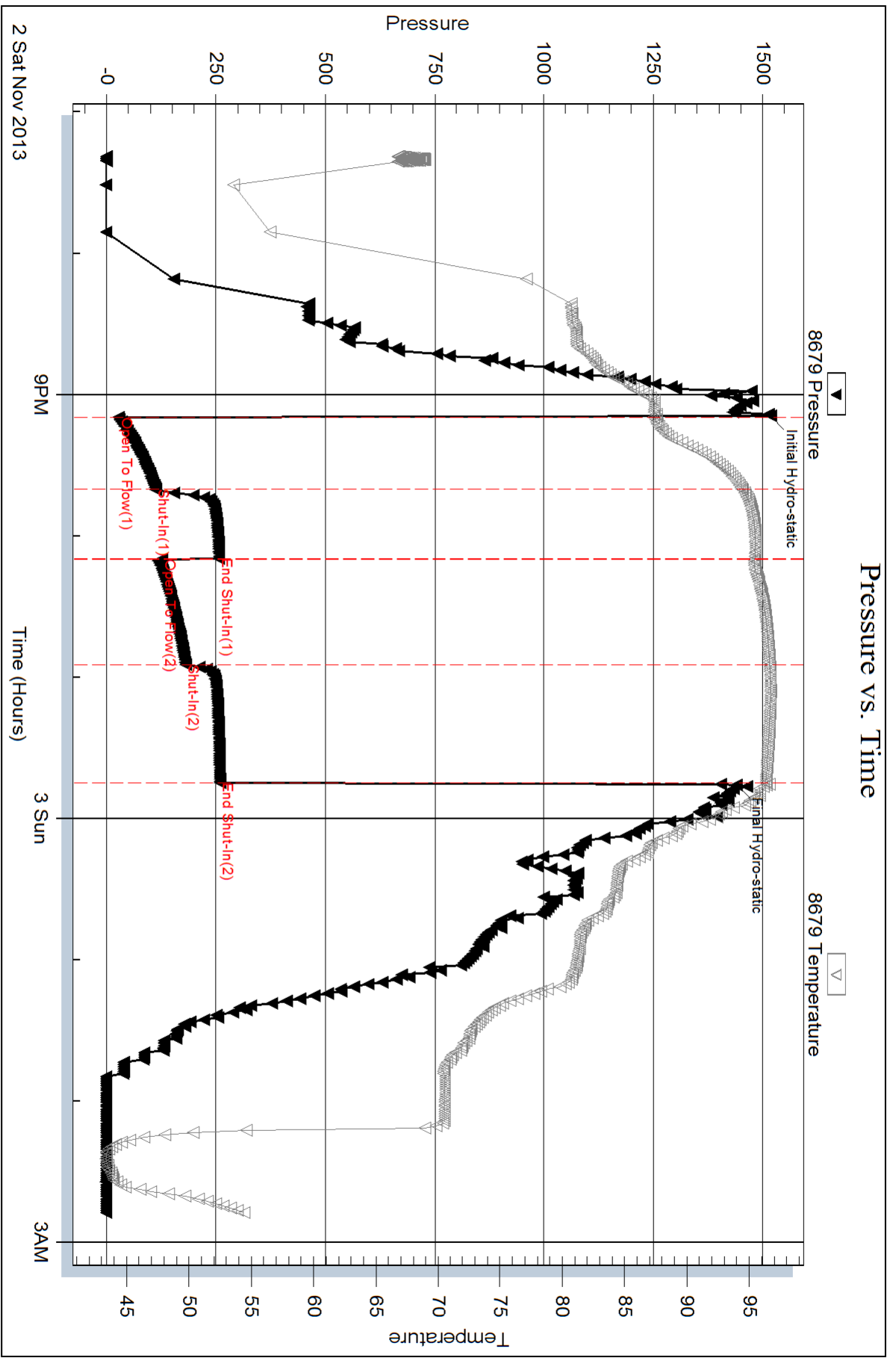
Mud Type: Gel Chem	Cushion Type:	Oil API: 38 deg API
Mud Weight: 9.00 lb/gal	Cushion Length: ft	Water Salinity: ppm
Viscosity: 60.00 sec/qt	Cushion Volume: bbl	
Water Loss: 5.79 in ³	Gas Cushion Type:	
Resistivity: ohm.m	Gas Cushion Pressure: psig	
Salinity: 3500.00 ppm		
Filter Cake: inches		

Recovery Information

Recovery Table

Length ft	Description	Volume bbl
252.00	MW with a scum of oil 10%M 90%W	3.535
63.00	VSOCMW 2%O 30%M 68%W	0.884
25.00	SOCWM 5%O 35%W 60%M	0.351
20.00	Gassy Oil 10%G 90%O	0.281
0.00	519=GIP	0.000

Total Length: 360.00 ft Total Volume: 5.051 bbl
Num Fluid Samples: 0 Num Gas Bombs: 0 Serial #:
Laboratory Name: Laboratory Location:
Recovery Comments:

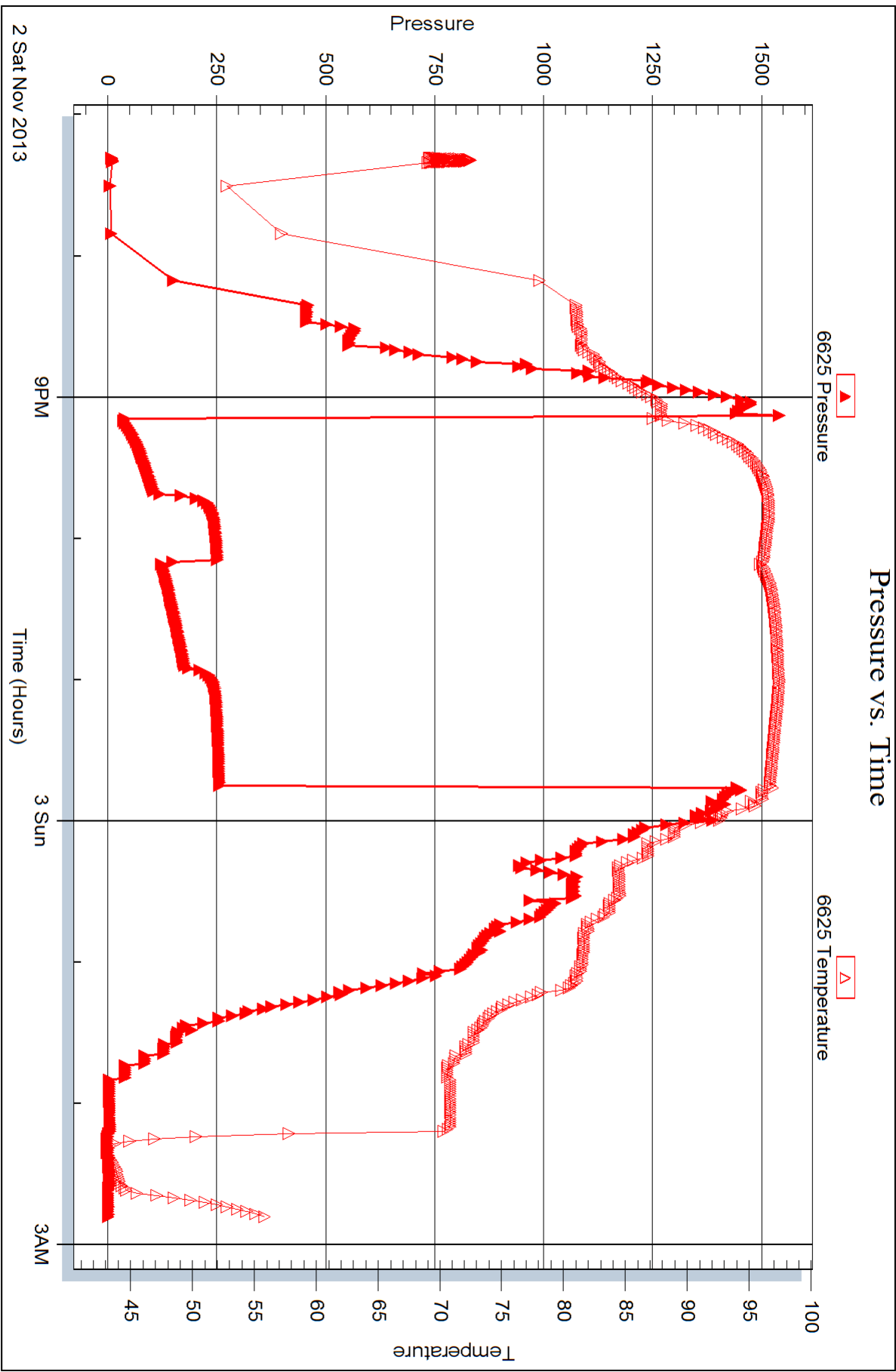


Serial #: 6625

Outside American Warrior Inc

Eulerl #18-35

DST Test Number: 2



Trilobite Testing, Inc

Ref. No: 52550

Printed: 2013.11.07 @ 10:17:01



DRILL STEM TEST REPORT

Prepared For: **American Warrior Inc**

PO Box 399
Garden City KS 67545

ATTN: Jim Musgrove

Eulert #18-35

35-11s-15w

Start Date: 2013.11.03 @ 13:15:08

End Date: 2013.11.03 @ 19:00:38

Job Ticket #: 039751 DST #: 3

Trilobite Testing, Inc
PO Box 362 Hays, KS 67601
ph: 785-625-4778 fax: 785-625-5620

Printed: 2013.11.07 @ 10:16:30



TRILOBITE TESTING, INC.

DRILL STEM TEST REPORT

American Warrior Inc
 PO Box 399
 Garden City KS 67545
 ATTN: Jim Musgrove

35-11s-15w
Eulert #18-35
 Job Ticket: 039751 **DST#: 3**
 Test Start: 2013.11.03 @ 13:15:08

GENERAL INFORMATION:

Formation: **LKC I-J**
 Deviated: No Whipstock: ft (KB)
 Time Tool Opened: 14:28:08
 Time Test Ended: 19:00:38
 Interval: **3111.00 ft (KB) To 3160.00 ft (KB) (TVD)**
 Total Depth: 3160.00 ft (KB) (TVD)
 Hole Diameter: 7.88 inches Hole Condition: Good
 Test Type: Conventional Bottom Hole (Reset)
 Tester: Jeff Brown
 Unit No: 67
 Reference Elevations: 1811.00 ft (KB)
 1803.00 ft (CF)
 KB to GR/CF: 8.00 ft

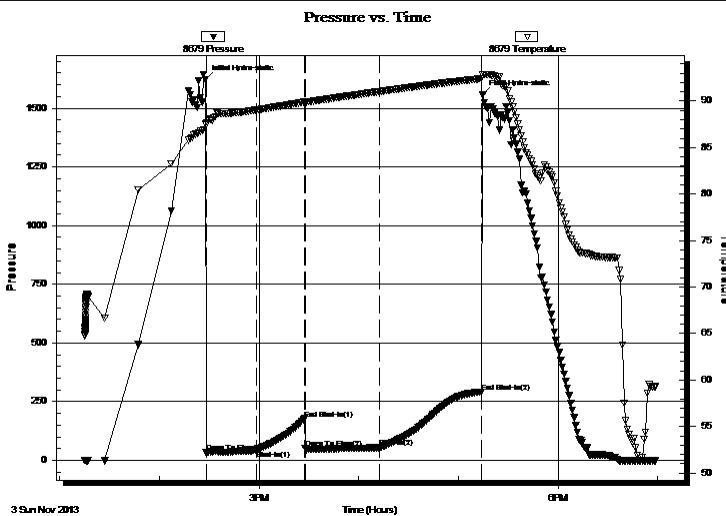
Serial #: 8679

Inside

Press @ Run Depth: 54.09 psig @ 3147.00 ft (KB) Capacity: 8000.00 psig
 Start Date: 2013.11.03 End Date: 2013.11.03 Last Calib.: 2013.11.03
 Start Time: 13:15:09 End Time: 18:58:38 Time On Btm: 2013.11.03 @ 14:27:38
 Time Off Btm: 2013.11.03 @ 17:14:38

TEST COMMENT: IFP-Good blow BOB in 20 min
 ISI-Dead no blow back
 FFP-Strong blow BOB in 4 min
 FSI-Dead no blow back

PRESSURE SUMMARY



Time (Min.)	Pressure (psig)	Temp (deg F)	Annotation
0	1621.82	87.57	Initial Hydro-static
1	32.83	87.45	Open To Flow (1)
31	44.58	89.02	Shut-In(1)
60	176.95	89.89	End Shut-In(1)
60	52.91	89.83	Open To Flow (2)
105	54.09	91.01	Shut-In(2)
166	291.56	92.40	End Shut-In(2)
167	1556.83	92.79	Final Hydro-static

Recovery

Length (ft)	Description	Volume (bbl)
94.00	SOCGM 5%O 20%G 75%M	1.32
0.00	315=GIP	0.00

Gas Rates

	Choke (inches)	Pressure (psig)	Gas Rate (Mcf/d)

* Recovery from multiple tests



**TRILOBITE
TESTING, INC.**

DRILL STEM TEST REPORT

TOOL DIAGRAM

American Warrior Inc
 PO Box 399
 Garden City KS 67545
 ATTN: Jim Musgrove

35-11s-15w
Eulert #18-35
 Job Ticket: 039751 **DST#: 3**
 Test Start: 2013.11.03 @ 13:15:08

Tool Information

Drill Pipe:	Length: 3100.00 ft	Diameter: 3.80 inches	Volume: 43.48 bbl	Tool Weight:	2000.00 lb
Heavy Wt. Pipe:	Length: 0.00 ft	Diameter: 2.70 inches	Volume: 0.00 bbl	Weight set on Packer:	20000.00 lb
Drill Collar:	Length: 0.00 ft	Diameter: 2.25 inches	Volume: 0.00 bbl	Weight to Pull Loose:	40000.00 lb
			<u>Total Volume: 43.48 bbl</u>	Tool Chased	0.00 ft
Drill Pipe Above KB:	9.00 ft			String Weight: Initial	34000.00 lb
Depth to Top Packer:	3111.00 ft			Final	35000.00 lb
Depth to Bottom Packer:	ft				
Interval between Packers:	49.00 ft				
Tool Length:	69.00 ft				
Number of Packers:	2	Diameter: 6.88 inches			

Tool Comments:

Tool Description	Length (ft)	Serial No.	Position	Depth (ft)	Accum. Lengths
-------------------------	--------------------	-------------------	-----------------	-------------------	-----------------------

Change Over Sub	1.00			3092.00	
Shut In Tool	5.00			3097.00	
Hydraulic tool	5.00			3102.00	
Packer	4.00			3106.00	20.00 Bottom Of Top Packer
Packer	5.00			3111.00	
Stubb	1.00			3112.00	
Perforations	2.00			3114.00	
Change Over Sub	1.00			3115.00	
Drill Pipe	31.00			3146.00	
Change Over Sub	1.00			3147.00	
Recorder	0.00	6625	Outside	3147.00	
Recorder	0.00	8679	Inside	3147.00	
Perforations	9.00			3156.00	
Bullnose	4.00			3160.00	49.00 Bottom Packers & Anchor

Total Tool Length: 69.00



TRILOBITE
TESTING, INC.

DRILL STEM TEST REPORT

FLUID SUMMARY

American Warrior Inc
PO Box 399
Garden City KS 67545
ATTN: Jim Musgrove

35-11s-15w
Eulert #18-35
Job Ticket: 039751 **DST#: 3**
Test Start: 2013.11.03 @ 13:15:08

Mud and Cushion Information

Mud Type: Gel Chem	Cushion Type:	Oil API:	deg API
Mud Weight: 9.00 lb/gal	Cushion Length: ft	Water Salinity:	ppm
Viscosity: 59.00 sec/qt	Cushion Volume: bbl		
Water Loss: 5.38 in ³	Gas Cushion Type:		
Resistivity: ohm.m	Gas Cushion Pressure: psig		
Salinity: 3600.00 ppm			
Filter Cake: inches			

Recovery Information

Recovery Table

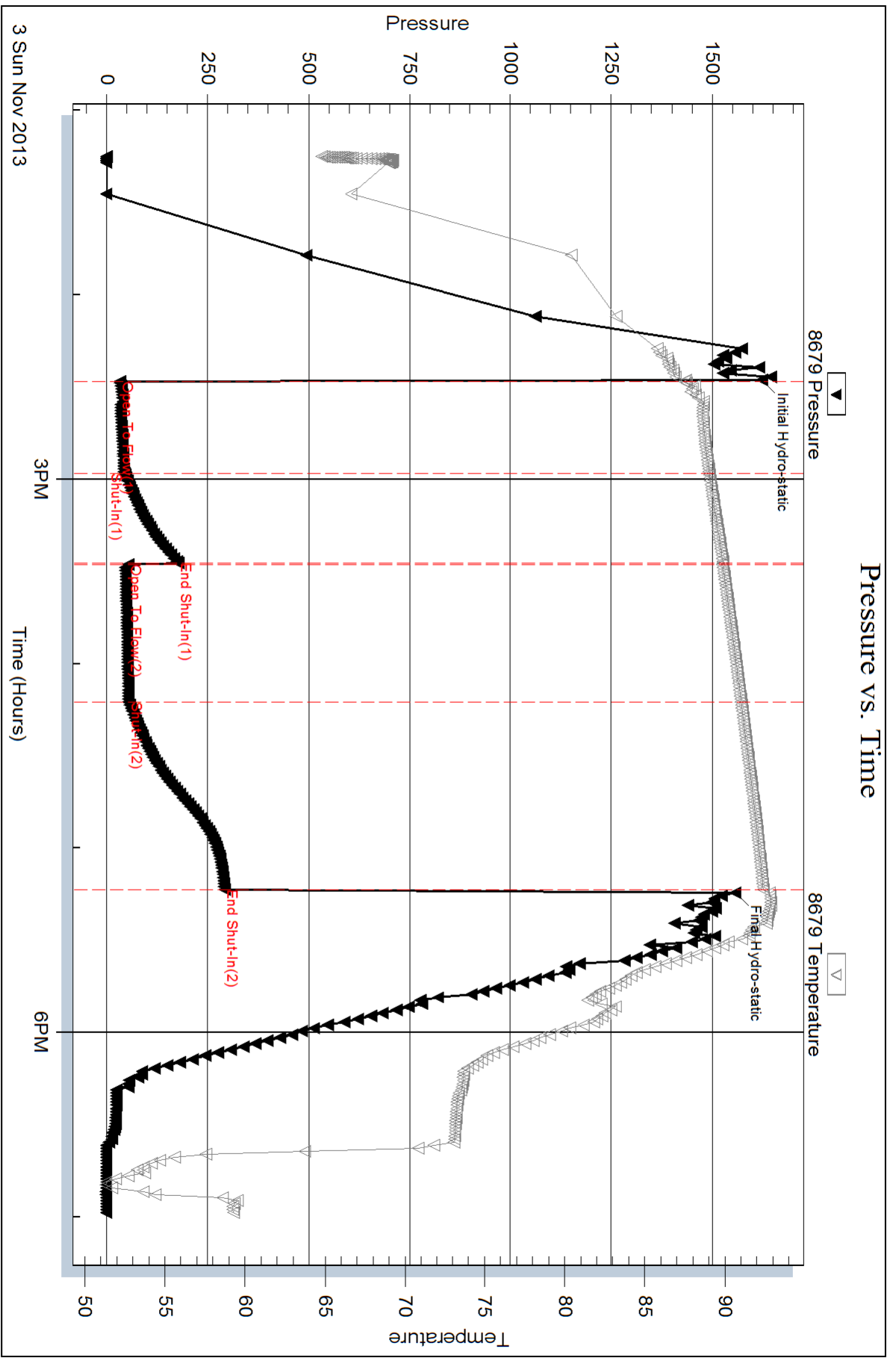
Length ft	Description	Volume bbl
94.00	SOCGM 5%O 20%G 75%M	1.319
0.00	315=GIP	0.000

Total Length: 94.00 ft Total Volume: 1.319 bbl

Num Fluid Samples: 0 Num Gas Bombs: 0 Serial #:

Laboratory Name: Laboratory Location:

Recovery Comments:

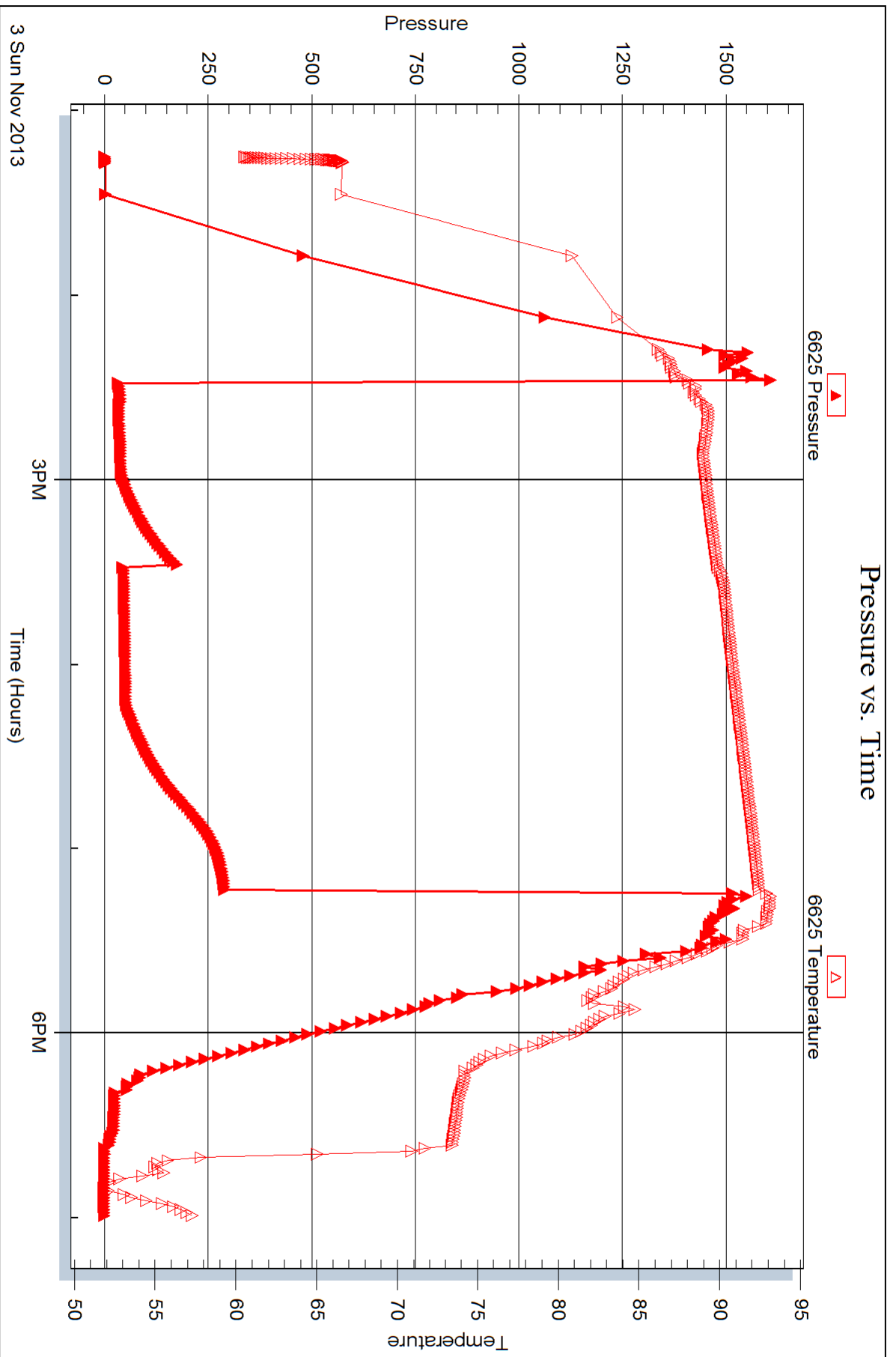


Serial #: 6625

Outside American Warrior Inc

Ellert #18-35

DST Test Number: 3





DRILL STEM TEST REPORT

Prepared For: **American Warrior Inc**

PO Box 399
Garden City KS 67545

ATTN: Jim Musgrove

Eulert #18-35

35-11s-15w

Start Date: 2013.11.04 @ 04:05:30

End Date: 2013.11.04 @ 10:16:00

Job Ticket #: 039752 DST #: 4

Trilobite Testing, Inc
PO Box 362 Hays, KS 67601
ph: 785-625-4778 fax: 785-625-5620

Printed: 2013.11.07 @ 10:14:59



TRILOBITE TESTING, INC.

DRILL STEM TEST REPORT

American Warrior Inc
 PO Box 399
 Garden City KS 67545
 ATTN: Jim Musgrove

35-11s-15w
Eulert #18-35
 Job Ticket: 039752 **DST#: 4**
 Test Start: 2013.11.04 @ 04:05:30

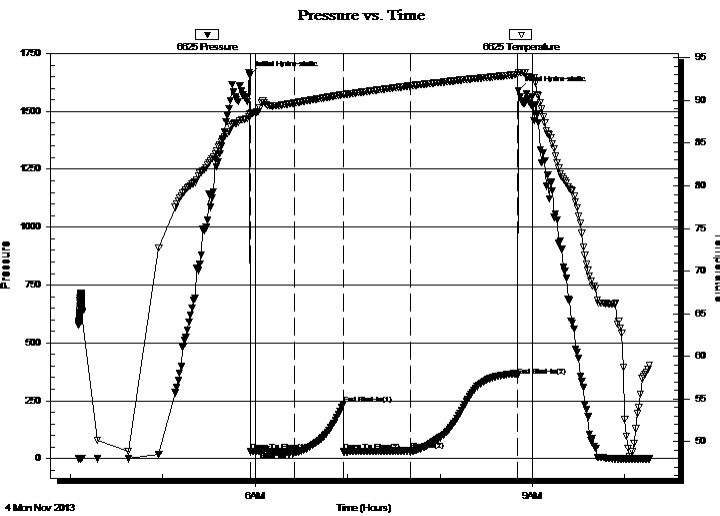
GENERAL INFORMATION:

Formation: **LKC K-L**
 Deviated: No Whipstock: ft (KB)
 Time Tool Opened: 05:57:00
 Time Test Ended: 10:16:00
 Interval: **3160.00 ft (KB) To 3215.00 ft (KB) (TVD)**
 Total Depth: 3000.00 ft (KB) (TVD)
 Hole Diameter: 7.88 inches Hole Condition: Good
 Test Type: Conventional Bottom Hole (Reset)
 Tester: Jeff Brown
 Unit No: 67
 Reference Elevations: 1811.00 ft (KB)
 1803.00 ft (CF)
 KB to GR/CF: 8.00 ft

Serial #: 6625 Outside

Press @ Run Depth: 34.57 psig @ 3197.00 ft (KB) Capacity: 8000.00 psig
 Start Date: 2013.11.04 End Date: 2013.11.04 Last Calib.: 2013.11.04
 Start Time: 04:05:31 End Time: 10:16:00 Time On Btm: 2013.11.04 @ 05:56:30
 Time Off Btm: 2013.11.04 @ 08:51:00

TEST COMMENT: IFP-Fair blow built to 4 1/2"
 ISI-Dead no blow back
 FFP-Fair blow built to 7"
 FSI-Dead no blow back



PRESSURE SUMMARY

Time (Min.)	Pressure (psig)	Temp (deg F)	Annotation
0	1656.05	88.41	Initial Hydro-static
1	30.73	88.33	Open To Flow (1)
29	30.05	89.71	Shut-In(1)
61	234.42	90.68	End Shut-In(1)
61	32.19	90.68	Open To Flow (2)
105	34.57	91.73	Shut-In(2)
174	358.10	93.03	End Shut-In(2)
175	1589.46	93.27	Final Hydro-static

Recovery

Length (ft)	Description	Volume (bbl)
31.00	SOCGM 5%G 5%O 90%M	0.43
0.00	94=GIP	0.00

* Recovery from multiple tests

Gas Rates

Choke (inches)	Pressure (psig)	Gas Rate (Mcf/d)



**TRILOBITE
TESTING, INC.**

DRILL STEM TEST REPORT

TOOL DIAGRAM

American Warrior Inc
PO Box 399
Garden City KS 67545
ATTN: Jim Musgrove

35-11s-15w
Eulert #18-35
Job Ticket: 039752 **DST#: 4**
Test Start: 2013.11.04 @ 04:05:30

Tool Information

Drill Pipe:	Length: 3163.00 ft	Diameter: 3.80 inches	Volume: 44.37 bbl	Tool Weight:	2000.00 lb
Heavy Wt. Pipe:	Length: 0.00 ft	Diameter: 2.70 inches	Volume: 0.00 bbl	Weight set on Packer:	20000.00 lb
Drill Collar:	Length: 0.00 ft	Diameter: 2.25 inches	Volume: 0.00 bbl	Weight to Pull Loose:	40000.00 lb
			<u>Total Volume: 44.37 bbl</u>	Tool Chased	0.00 ft
Drill Pipe Above KB:	23.00 ft			String Weight: Initial	34000.00 lb
Depth to Top Packer:	3160.00 ft			Final	34000.00 lb
Depth to Bottom Packer:	ft				
Interval between Packers:	55.00 ft				
Tool Length:	75.00 ft				
Number of Packers:	2	Diameter: 6.88 inches			

Tool Comments:

Tool Description	Length (ft)	Serial No.	Position	Depth (ft)	Accum. Lengths
-------------------------	--------------------	-------------------	-----------------	-------------------	-----------------------

Change Over Sub	1.00			3141.00	
Shut In Tool	5.00			3146.00	
Hydraulic tool	5.00			3151.00	
Packer	4.00			3155.00	20.00 Bottom Of Top Packer
Packer	5.00			3160.00	
Stubb	1.00			3161.00	
Perforations	3.00			3164.00	
Change Over Sub	1.00			3165.00	
Drill Pipe	31.00			3196.00	
Change Over Sub	1.00			3197.00	
Recorder	0.00	6625	Outside	3197.00	
Recorder	0.00	8679	Inside	3197.00	
Perforations	14.00			3211.00	
Bullnose	4.00			3215.00	55.00 Bottom Packers & Anchor

Total Tool Length: 75.00



TRILOBITE
TESTING, INC.

DRILL STEM TEST REPORT

FLUID SUMMARY

American Warrior Inc
PO Box 399
Garden City KS 67545
ATTN: Jim Musgrove

35-11s-15w
Eulert #18-35
Job Ticket: 039752 **DST#: 4**
Test Start: 2013.11.04 @ 04:05:30

Mud and Cushion Information

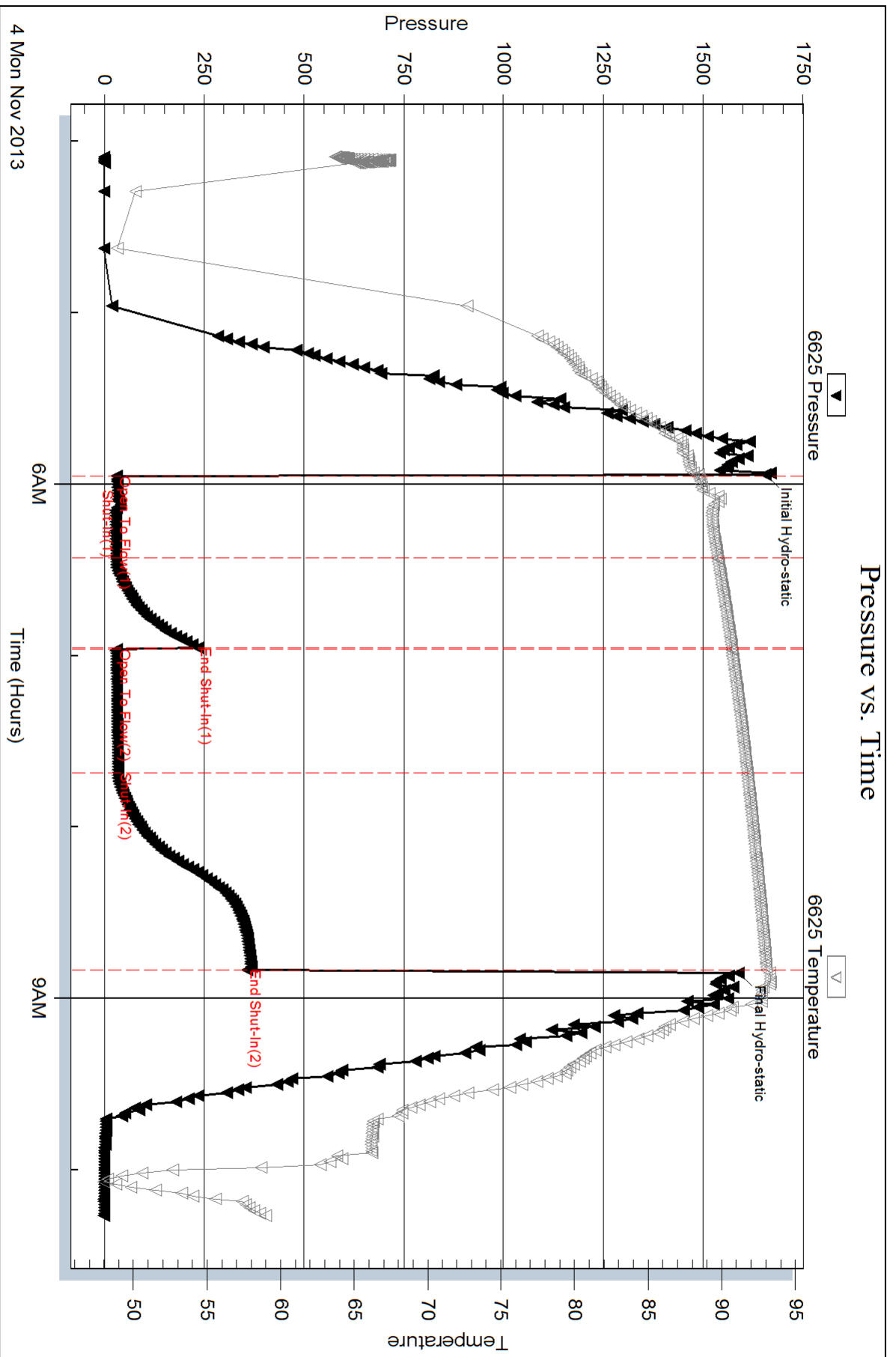
Mud Type: Gel Chem	Cushion Type:	Oil API:	deg API
Mud Weight: 9.00 lb/gal	Cushion Length: ft	Water Salinity:	ppm
Viscosity: 59.00 sec/qt	Cushion Volume: bbl		
Water Loss: 5.38 in ³	Gas Cushion Type:		
Resistivity: ohm.m	Gas Cushion Pressure: psig		
Salinity: 3600.00 ppm			
Filter Cake: inches			

Recovery Information

Recovery Table

Length ft	Description	Volume bbl
31.00	SOCGM 5%G 5%O 90%M	0.435
0.00	94=GIP	0.000

Total Length: 31.00 ft Total Volume: 0.435 bbl
 Num Fluid Samples: 0 Num Gas Bombs: 0 Serial #:
 Laboratory Name: Laboratory Location:
 Recovery Comments:



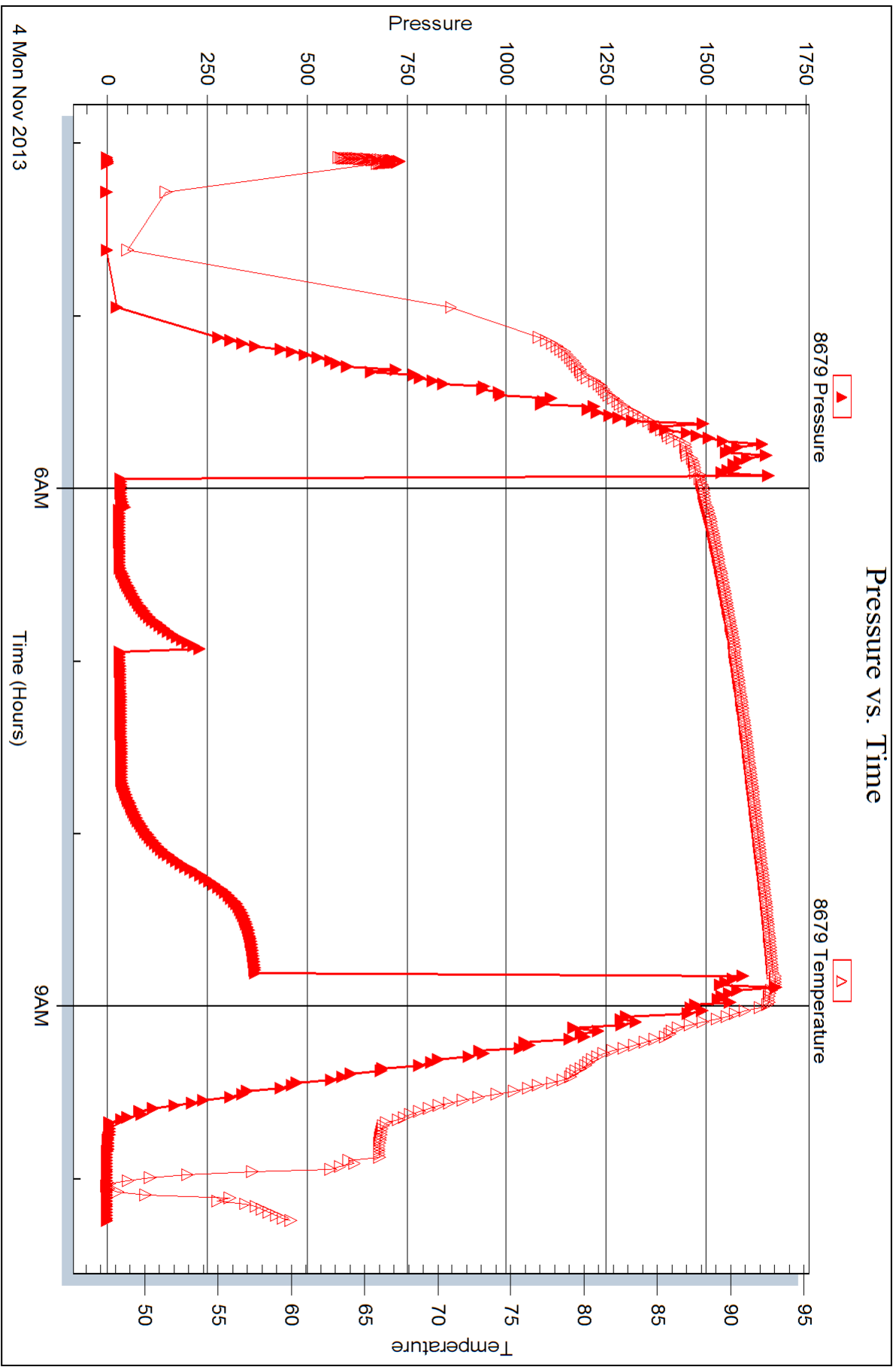
Serial #: 8679

Inside

American Warrior Inc

Ellert #18-35

DST Test Number: 4



Triobite Testing, Inc

Ref. No: 039752

Printed: 2013.11.07 @ 10:15:01



DRILL STEM TEST REPORT

Prepared For: **American Warrior Inc**

PO Box 399
Garden City KS 67545

ATTN: Jim Musgrove

Eulert #18-35

35-11s-15w

Start Date: 2013.11.04 @ 20:29:00

End Date: 2013.11.05 @ 02:07:30

Job Ticket #: 039753 DST #: 5

Trilobite Testing, Inc
PO Box 362 Hays, KS 67601
ph: 785-625-4778 fax: 785-625-5620

Printed: 2013.11.07 @ 10:13:00



**TRILOBITE
TESTING, INC.**

DRILL STEM TEST REPORT

TOOL DIAGRAM

American Warrior Inc
PO Box 399
Garden City KS 67545
ATTN: Jim Musgrove

35-11s-15w
Eulert #18-35
Job Ticket: 039753 **DST#: 5**
Test Start: 2013.11.04 @ 20:29:00

Tool Information

Drill Pipe:	Length: 3226.00 ft	Diameter: 3.80 inches	Volume: 45.25 bbl	Tool Weight:	2000.00 lb
Heavy Wt. Pipe:	Length: 0.00 ft	Diameter: 2.70 inches	Volume: 0.00 bbl	Weight set on Packer:	20000.00 lb
Drill Collar:	Length: 0.00 ft	Diameter: 2.25 inches	Volume: 0.00 bbl	Weight to Pull Loose:	38000.00 lb
			<u>Total Volume: 45.25 bbl</u>	Tool Chased	0.00 ft
Drill Pipe Above KB:	25.00 ft			String Weight: Initial	34000.00 lb
Depth to Top Packer:	3221.00 ft			Final	35000.00 lb
Depth to Bottom Packer:	ft				
Interval between Packers:	45.00 ft				
Tool Length:	65.00 ft				
Number of Packers:	2	Diameter: 6.88 inches			

Tool Comments:

Tool Description	Length (ft)	Serial No.	Position	Depth (ft)	Accum. Lengths
-------------------------	--------------------	-------------------	-----------------	-------------------	-----------------------

Change Over Sub	1.00			3202.00	
Shut In Tool	5.00			3207.00	
Hydraulic tool	5.00			3212.00	
Packer	4.00			3216.00	20.00 Bottom Of Top Packer
Packer	5.00			3221.00	
Stubb	1.00			3222.00	
Perforations	3.00			3225.00	
Change Over Sub	1.00			3226.00	
Change Over Sub	1.00			3227.00	
Recorder	0.00	6625	Outside	3227.00	
Recorder	0.00	8679	Inside	3227.00	
Drill Pipe	31.00			3258.00	
Perforations	4.00			3262.00	
Bullnose	4.00			3266.00	45.00 Bottom Packers & Anchor

Total Tool Length: 65.00



**TRILOBITE
TESTING, INC.**

DRILL STEM TEST REPORT

FLUID SUMMARY

American Warrior Inc
PO Box 399
Garden City KS 67545
ATTN: Jim Musgrove

35-11s-15w
Eulert #18-35
Job Ticket: 039753 **DST#: 5**
Test Start: 2013.11.04 @ 20:29:00

Mud and Cushion Information

Mud Type: Gel Chem	Cushion Type:	Oil API:	deg API
Mud Weight: 9.00 lb/gal	Cushion Length: ft	Water Salinity:	ppm
Viscosity: 57.00 sec/qt	Cushion Volume: bbl		
Water Loss: 5.99 in ³	Gas Cushion Type:		
Resistivity: ohm.m	Gas Cushion Pressure: psig		
Salinity: 3500.00 ppm			
Filter Cake: inches			

Recovery Information

Recovery Table

Length ft	Description	Volume bbl
157.00	Mud	2.202

Total Length: 157.00 ft Total Volume: 2.202 bbl
 Num Fluid Samples: 0 Num Gas Bombs: 0 Serial #:
 Laboratory Name: Laboratory Location:
 Recovery Comments: MIS-Run

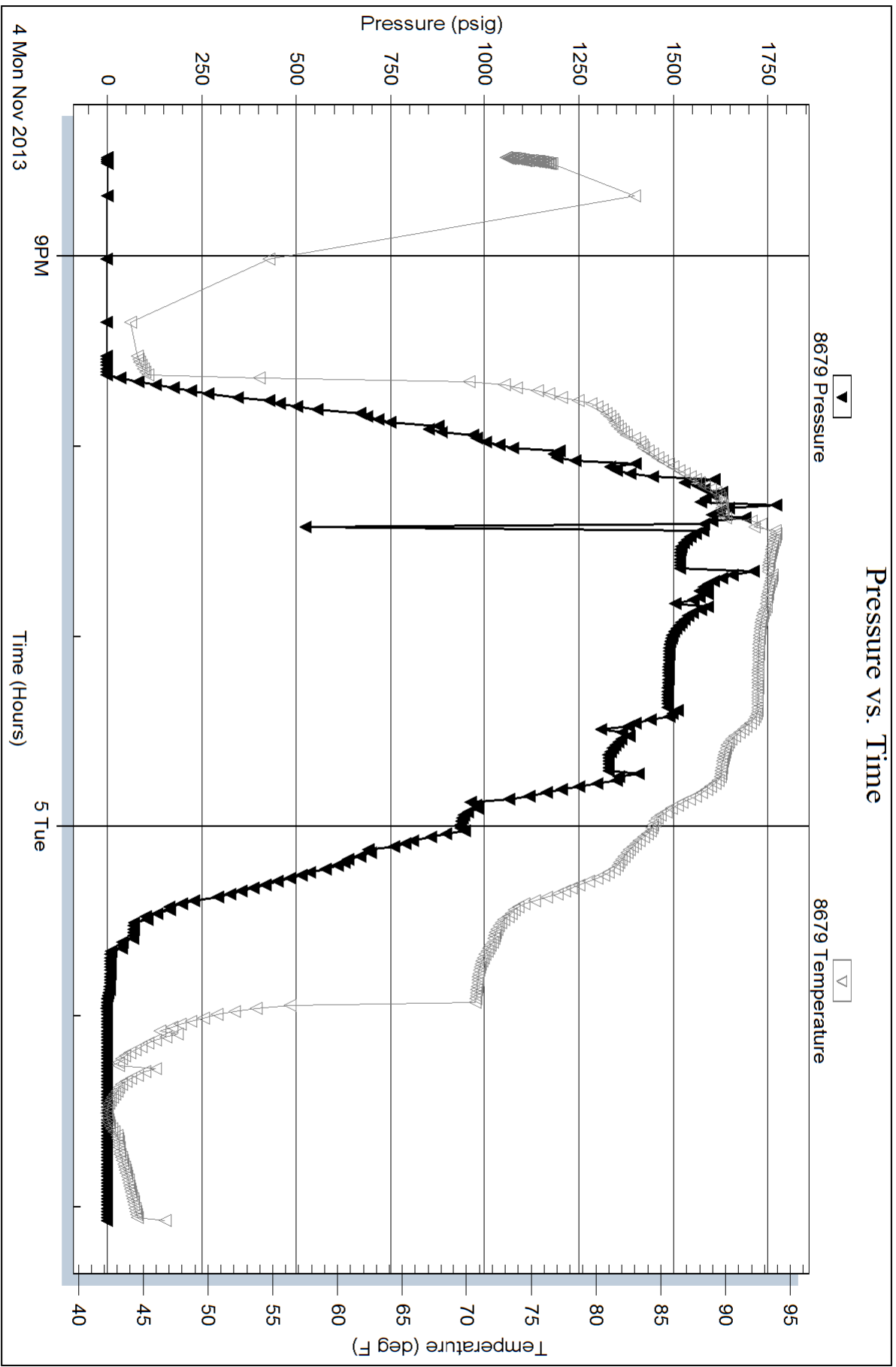
Serial #: 8679

Inside

American Warrior Inc

Ellert #18-35

DST Test Number: 5





TRILOBITE TESTING INC.

1515 Commerce Parkway • Hays, Kansas 67601

Test Ticket

NO. 52549

Well Name & No. Euler + # 18-35 Test No. 1 Date 11-02-13
 Company American Warrior INC Elevation 1811 KB 1803 GL
 Address Po Box 399 Garden City KS 67545
 Co. Rep / Geo. Jim Musgrave Rig Duke #8
 Location: Sec. 35 Twp. 11 S Rge. 15 W Co. Russel State KS

Interval Tested 2904-3000 Zone Tested Lansing -A-B-C
 Anchor Length 960 Drill Pipe Run 2912 Mud Wt. 8.7
 Top Packer Depth 2899 Drill Collars Run 0 Vis 59
 Bottom Packer Depth 2904 Wt. Pipe Run 0 WL 5.4
 Total Depth 3000 Chlorides 3600 ppm System LCM 2

Blow Description IP-Good Blow Bob IN 9 1/2 min
ISI-Dead No Blow Back
FP-Good Blow Bob IN 21 min
ISI-Dead No Blow Back

Rec	Feet of	%gas	%oil	%water	%mud
<u>603</u>	<u>USOCGM</u>	<u>3</u>	<u>2</u>	<u>35</u>	<u>60</u>
<u>108</u>	<u>USOCGM</u>	<u>3</u>	<u>2</u>		<u>95</u>
	<u>126-GIP</u>				

Rec Total 171 BHT 93 Gravity API RW, 248 @ 48.9° F Chlorides 42,000 ppm

(A) Initial Hydrostatic 1491 Test 1150 T-On Location 1:14
 (B) First Initial Flow 54 Jars T-Started 1:54
 (C) First Final Flow 95 Safety Joint T-Open 4:35
 (D) Initial Shut-In 537 Circ Sub T-Pulled 6:50
 (E) Second Initial Flow 100 Hourly Standby T-Out 9:02
 (F) Second Final Flow 124 Mileage 960 RT 148.80 Comments _____
 (G) Final Shut-In 541 Sampler _____
 (H) Final Hydrostatic 1448 Straddle _____ Ruined Shale Packer _____
 Shale Packer _____ Ruined Packer _____

Initial Open 30 Extra Packer _____ Extra Copies _____
 Initial Shut-In 30 Extra Recorder _____ Sub Total 0
 Final Flow 30 45 Day Standby _____ Total 1298.80
 Final Shut-In _____ Accessibility _____ MP/DST Disc't _____
 Sub Total 1298.80

Approved By _____ Our Representative Jeff Brown

Trilobite Testing Inc. shall not be liable for damaged of any kind of the property or personnel of the one for whom a test is made, or for any loss suffered or sustained, directly or indirectly, through the use of its equipment, or its statements or opinion concerning the results of any test, tools lost or damaged in the hole shall be paid for at cost by the party for whom the test is made.



TRILOBITE TESTING INC.

1515 Commerce Parkway • Hays, Kansas 67601

Test Ticket

NO. 52550

Well Name & No. Eulert #18-35 Test No. 2 Date 11-2-13
 Company American Warrior INC Elevation 1811 KB 1803 GL
 Address PO Box 399 Garden City KS 67545
 Co. Rep / Geo. Jim Mus Grove Rig Duke #8
 Location: Sec. 35 Twp. 11S Rge. 15W Co. Russell State KS

Interval Tested 2999-3035 Zone Tested Lansing-D
 Anchor Length 36 Drill Pipe Run 300Lp Mud Wt. 8.9
 Top Packer Depth 2994 Drill Collars Run 0 Vis 60
 Bottom Packer Depth 2999 Wt. Pipe Run 0 WL 5.8
 Total Depth 3035 Chlorides 3500 ppm System LCM 2

Blow Description 1st-Strong Blow Bob IN 4 1/2 min
1st-fair Blow Back Built To 6 1/2 IN
1st-Good Blow Bob IN 8 min
1st-fair Blow Back Built TO 5 IN

Rec	Feet of	%gas	%oil	%water	%mud
<u>252</u>	<u>MW WITH A scum of oil</u>		<u>90</u>	<u>10</u>	
<u>63</u>	<u>USOC MW</u>	<u>2</u>	<u>68</u>	<u>30</u>	
<u>25</u>	<u>SOC WM</u>	<u>5</u>	<u>35</u>	<u>60</u>	
<u>20</u>	<u>Gassy oil</u>	<u>10</u>	<u>90</u>		
	<u>519-GIP</u>				

Rec Total 360 BHT 96 Gravity 38 API RW 246 @ 57.5° F Chlorides 36,000 ppm

(A) Initial Hydrostatic 1518 Test 1150 T-On Location 19:12
 (B) First Initial Flow 28 Jars T-Started 19:18
 (C) First Final Flow 112 Safety Joint T-Open 21:09
 (D) Initial Shut-In 257 Circ Sub T-Pulled 23:39
 (E) Second Initial Flow 127 Hourly Standby T-Out 2:48
 (F) Second Final Flow 181 Mileage 148.80 Comments _____
 (G) Final Shut-In 259 Sampler _____
 (H) Final Hydrostatic 1440 Straddle _____ Ruined Shale Packer _____
 Shale Packer _____ Ruined Packer _____

Initial Open 30 Extra Packer _____ Extra Copies _____
 Initial Shut-In 30 Extra Recorder _____ Sub Total 0
 Final Flow 45 Day Standby _____ Total 1298.80
 Final Shut-In 45 Accessibility _____ MP/DST Disc't _____
 Sub Total 1298.80

Approved By _____ Our Representative Jeff Brown

Trilobite Testing Inc. shall not be liable for damaged of any kind of the property or personnel of the one for whom a test is made, or for any loss suffered or sustained, directly or indirectly, through the use of its equipment, or its statements or opinion concerning the results of any test, tools lost or damaged in the hole shall be paid for at cost by the party for whom the test is made.



TRILOBITE TESTING INC.

P.O. Box 1733 • Hays, Kansas 67601

Test Ticket

NO. 039751

Well Name & No. Eulert #18-35 Test No. 3 Date 11-2-13
 Company American Warrior INC Elevation 1811 KB 1803 GL
 Address PO Box 399 Garden City KS 67545
 Co. Rep / Geo. Jim Musgrave Rig Duke #8
 Location: Sec. 35 Twp. 11 S Rge. 15 W Co. Russell State KS

Interval Tested 3111 - 3160 Zone Tested Lansing - I - J
 Anchor Length 49 Drill Pipe Run 3100 Mud Wt. 9.0
 Top Packer Depth 3106 Drill Collars Run 0 Vis 57
 Bottom Packer Depth 3111 Wt. Pipe Run 0 WL 5.8
 Total Depth 3160 Chlorides 3500 ppm System LCM TR

Blow Description FF-Good Blow Bob IN 20 min
ISI-Dead No Blow Back
FF-Strong Blow Bob IN 4 min
ISI-Dead No Blow Back

Rec	Feet of	%gas	%oil	%water	%mud
<u>94</u>	<u>SOC GM</u>	<u>20</u>	<u>5</u>	<u>75</u>	
	<u>315-GIP</u>				

Rec Total 94 BHT 92 Gravity _____ API RW _____ @ _____ °F Chlorides _____ ppm

(A) Initial Hydrostatic 1422 Test 1150 T-On Location 13:05
 (B) First Initial Flow 33 Jars _____ T-Started 13:15
 (C) First Final Flow 45 Safety Joint _____ T-Open 14:28
 (D) Initial Shut-In 177 Circ Sub _____ T-Pulled 17:13
 (E) Second Initial Flow 53 Hourly Standby _____ T-Out 19:00
 (F) Second Final Flow 54 Mileage 148.80 Comments _____
 (G) Final Shut-In 292 Sampler _____
 (H) Final Hydrostatic 1557 Straddle _____ Ruined Shale Packer _____
 Shale Packer _____ Ruined Packer _____
 Extra Packer _____ Extra Copies _____
 Extra Recorder _____ Sub Total 0
 Day Standby _____ Total 1298.80
 Accessibility _____ MP/DST Disc't _____

Initial Open 30
 Initial Shut-In 30
 Final Flow 45
 Final Shut-In 600

Sub Total 1298.80

Approved By _____ Our Representative Jeff Brown

Trilobite Testing Inc. shall not be liable for damaged of any kind of the property or personnel of the one for whom a test is made, or for any loss suffered or sustained, directly or indirectly, through the use of its equipment, or its statements or opinion concerning the results of any test, tools lost or damaged in the hole shall be paid for at cost by the party for whom the test is made.



TRILOBITE TESTING INC.

P.O. Box 1733 • Hays, Kansas 67601

Test Ticket

NO. 039752

Well Name & No. EulerT #18-35 Test No. 4 Date 11-4-13
 Company American Warrior INC Elevation 1811 KB 1803 GL
 Address PO Box 399 Garden City KS 67545
 Co. Rep / Geo. Jim Musgrave Rig Duke #8
 Location: Sec. 35 Twp. 11s Rge. 15W Co. Russell State KS

Interval Tested 3160-3215 Zone Tested Lansing - K-L
 Anchor Length 55 Drill Pipe Run 3160 Mud Wt. 9.1
 Top Packer Depth 3155 Drill Collars Run 0 Vis 57
 Bottom Packer Depth 3160 Wt. Pipe Run 0 WL 6.0
 Total Depth 3215 Chlorides 3500 ppm System LCM 2

Blow Description FF-Fair Blow BUILT TO 4 1/2 IN
1st-Dead No Blow Back
FF-Fair Blow BUILT TO 7 IN
1st-Dead No Blow Back

Rec	Feet of	%gas	%oil	%water	%mud
<u>31</u>	<u>SOCGM</u>	<u>5</u>	<u>5</u>	<u>90</u>	<u>95</u>
Rec	Feet of <u>94-GIP</u>	%gas	%oil	%water	%mud
Rec	Feet of	%gas	%oil	%water	%mud
Rec	Feet of	%gas	%oil	%water	%mud
Rec	Feet of	%gas	%oil	%water	%mud

Rec Total 31 BHT 93 Gravity _____ API RW _____ @ _____ °F Chlorides _____ ppm

(A) Initial Hydrostatic 1456 Test 1150 T-On Location 4:00
 (B) First Initial Flow 31 Jars _____ T-Started 4:05
 (C) First Final Flow 30 Safety Joint _____ T-Open 5:56
 (D) Initial Shut-In 234 Circ Sub _____ T-Pulled 8:41
 (E) Second Initial Flow 32 Hourly Standby _____ T-Out 10:15
 (F) Second Final Flow 35 Mileage 148.80 Comments _____
 (G) Final Shut-In 358 Sampler _____
 (H) Final Hydrostatic 1589 Straddle _____ Ruined Shale Packer _____
 Shale Packer _____ Ruined Packer _____
 Extra Packer _____ Extra Copies _____
 Initial Open 30 Extra Recorder _____ Sub Total 0
 Initial Shut-In 30 Day Standby _____ Total 1298.80
 Final Flow 45 Accessibility _____ MP/DST Disc't _____
 Final Shut-In 60 Sub Total 1298.80

Approved By _____ Our Representative Jeff Brown

TriLOBite Testing Inc. shall not be liable for damaged of any kind of the property or personnel of the one for whom a test is made, or for any loss suffered or sustained, directly or indirectly, through the use of its equipment, or its statements or opinion concerning the results of any test, tools lost or damaged in the hole shall be paid for at cost by the party for whom the test is made.



TRILOBITE TESTING INC.

P.O. Box 1733 • Hays, Kansas 67601

Test Ticket

NO. 039753

Well Name & No. EulerT #18-35 Test No. 5 Date 11-4-13
 Company American Warrior INC Elevation 1811 KB 1803 GL
 Address PO Box 399 Garden City KS 67545
 Co. Rep / Geo. Jim MusGrove Rig Duke #8
 Location: Sec. 35 Twp. 11s Rge. 15W Co. Russell State KS

Interval Tested 3221-3246 Zone Tested ArBuckle
 Anchor Length 45 Drill Pipe Run 3226 Mud Wt. 9.1
 Top Packer Depth 3216 Drill Collars Run 0 Vis 57
 Bottom Packer Depth 3221 Wt. Pipe Run 0 WL 6.0
 Total Depth 3246 Chlorides 3500 ppm System LCM 2

Blow Description MIS-RUN 157' mud

Rec	Feet of	%gas	%oil	%water	%mud

Rec Total _____ BHT _____ Gravity _____ API RW _____ @ _____ °F Chlorides _____ ppm

(A) Initial Hydrostatic _____ Test 950 _____ T-On Location 20:06
 (B) First Initial Flow _____ Jars _____ T-Started 20:29
 (C) First Final Flow _____ Safety Joint _____ T-Open 22:27
 (D) Initial Shut-In _____ Circ Sub _____ T-Pulled 22:45
 (E) Second Initial Flow _____ Hourly Standby _____ T-Out 2:07
 (F) Second Final Flow _____ Mileage 148.80 _____ Comments MIS-RUN packer failure
 (G) Final Shut-In _____ Sampler _____
 (H) Final Hydrostatic _____ Straddle _____ Ruined Shale Packer _____
 Shale Packer _____ Ruined Packer _____
 Extra Packer _____ Extra Copies _____
 Initial Open _____ Extra Recorder _____ Sub Total 0
 Initial Shut-In _____ Day Standby _____ Total 1098.80
 Final Flow MIS-RUN _____ Accessibility _____ MP/DST Disc't _____
 Final Shut-In _____ Sub Total 1098.80

Approved By _____ Our Representative Jeff Brown

TriLOBITE TESTING Inc. shall not be liable for damaged of any kind of the property or personnel of the one for whom a test is made, or for any loss suffered or sustained, directly or indirectly, through the use of its equipment, or its statements or opinion concerning the results of any test, tools lost or damaged in the hole shall be paid for at cost by the party for whom the test is made.