

# ADVANTAGE ELEVATIONS

OIL FIELD SURVEYORS

BOX 8604 - PRATT, KS 67124  
(620) 672-6491

124131

INVOICE NO.

VAL ENERGY INC

OPERATOR

1-36

NO.

ANDES

FARM

Cowley

COUNTY

36

S

32s

T

5e

R

660' FSL & 500' FEL of Sec.

LOCATION

1285' GR

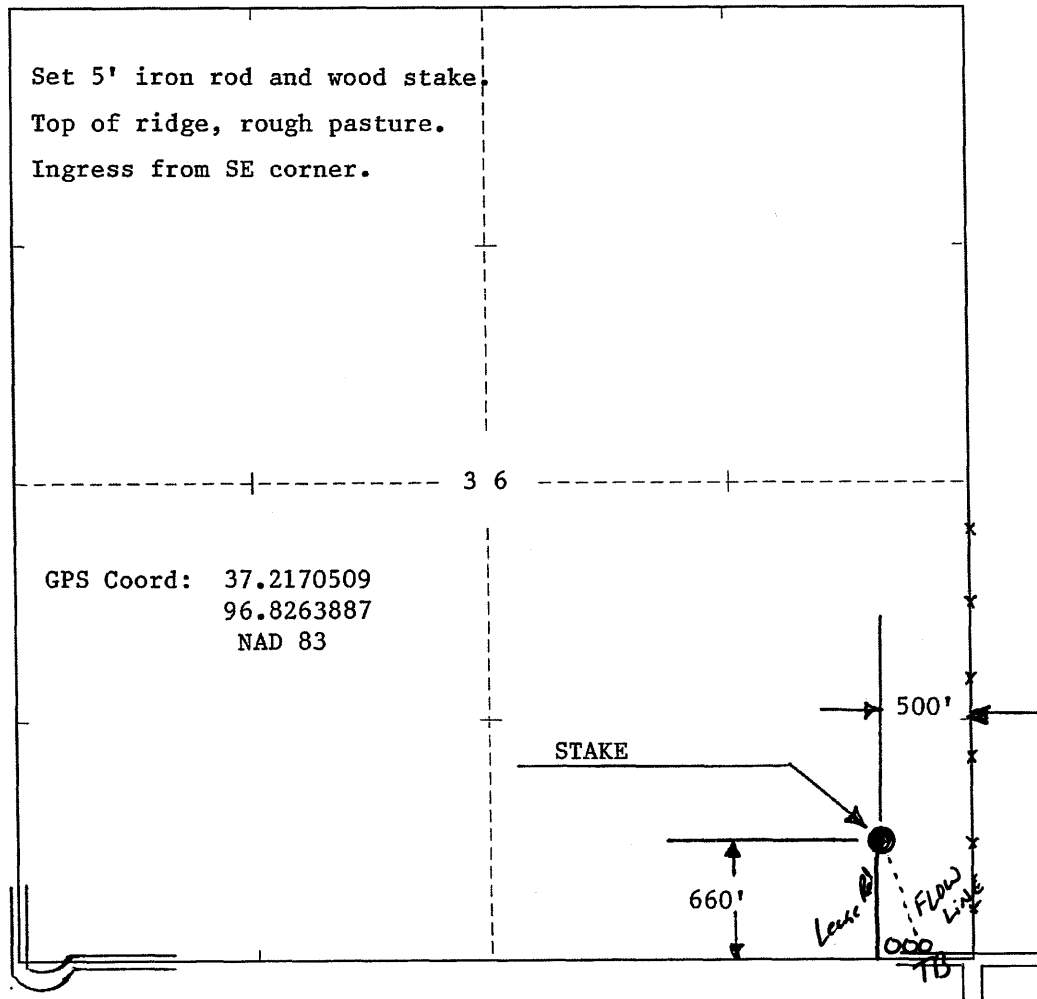
ELEVATION:

VAL ENERGY INC  
200 W Douglas, Ste 520  
Wichita, KS 67202-3005



AUTHORIZED BY: Todd Allam

SCALE: 1" = 1000'



DATE STAKED: 12/4/13