

ADVANTAGE ELEVATIONS

OIL FIELD SURVEYORS

BOX 8604 - PRATT, KS 67124
(620) 672-6491

124133

INVOICE NO.

VAL ENERGY INC

OPERATOR

3-1

NO.

SILVER CREEK RANCH

FARM

Cowley

COUNTY

1

S

33s

T

5e

R

660' FNL & 610' FEL of Sec.

LOCATION

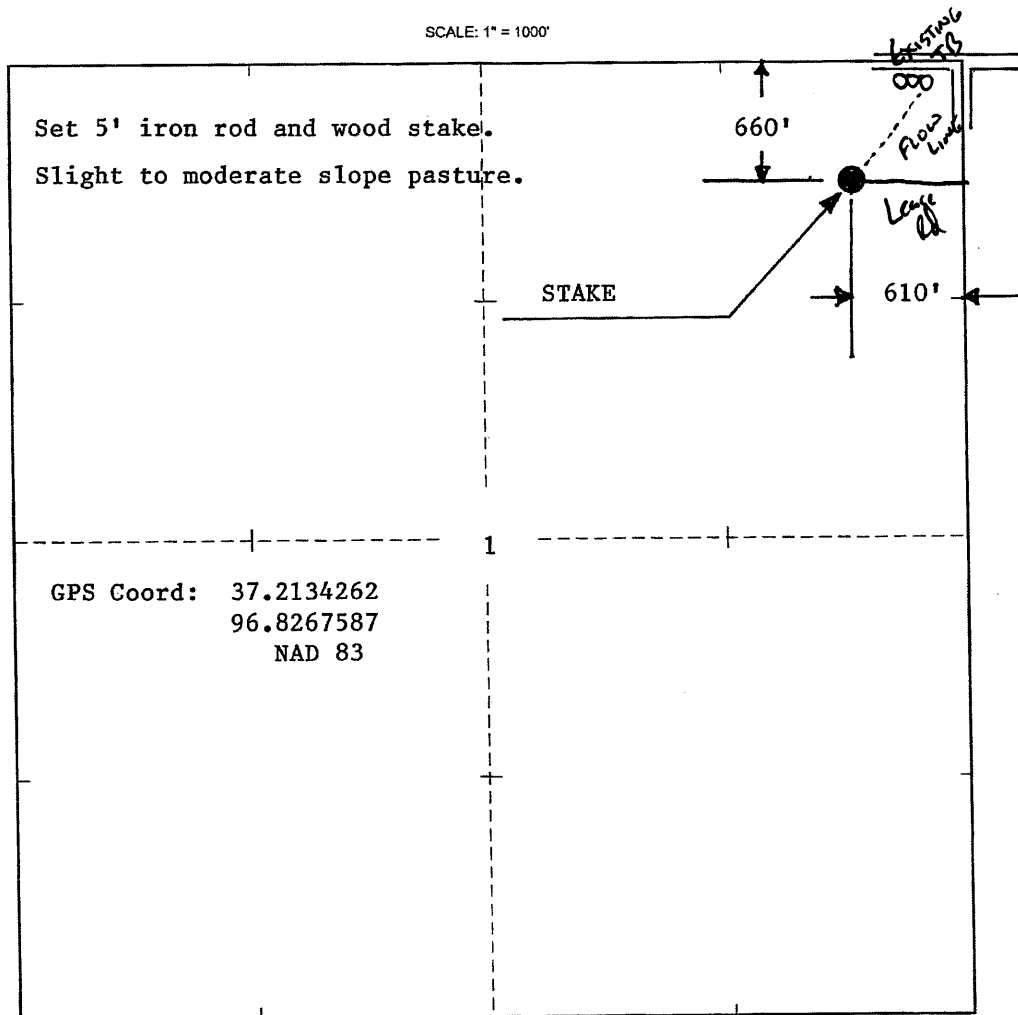
ELEVATION: 1294' GR



VAL ENERGY INC
200 W. Douglas, Ste 520
Wichita, KS 67202-3005

AUTHORIZED BY: Todd Allam

SCALE: 1" = 1000'



DATE STAKED: 12/4/13