

WELLSITE GEOLOGIST'S REPORT

VERNON C. SCHRAG
CONSULTANT GEOLOGIST



Scale 1:240 (5"=100') Imperial

Well Name: Boomhower A #1-16
Location: NE SE NW SEC. 16-17s-29w
Licence Number: API: 15-101-22457
Spud Date: August 27, 2013
Surface Coordinates: 860' FNL & 1173' FWL

Region: Lane Co., KS
Drilling Completed: September 8, 2013

Bottom Hole Coordinates:
Ground Elevation (ft): 2819' **K.B. Elevation (ft):** 2826'
Logged Interval (ft): 3800' **To: RTD** **Total Depth (ft):** 4620'
Formation: Mississippi
Type of Drilling Fluid: Chemical Premix (Displaced)

Printed by MUD.LOG from WellSight Systems 1-800-447-1534 www.WellSight.com

OPERATOR:

Company: Larson Engineering Inc.
Address: 562 West State Road 4
 Olmitz, KS 67564-8561

DRILLING CONTRACTOR:

H. D. Drilling, LLC, Rig #3 (Company Tools)

DP 4.5" XH (16.6#); DC 6.25" x 2.25" x 560'; Kelly 40.30'; Tool Joint 5.5" ; Bit: JZ-HA20-Q, 7-7/8" , jets 15-15-15; rpm 80, WOB 35k; Kelly Bushing 7' above ground level; LeWayne "Lew" Tresner (tool pusher).

CASING:

Set 8-5/8" casing at 266'
 Set 5-1/2" production casing

CIRCULATION SYSTEM:

Continental EMSCO D-300, duplex, 6 x 14, 60 spm, 700 psi, Chemical, premix, displaced 3388 to 3402'; earth pits, Morgan Mud, Inc., Cade Lines.

OPEN HOLE LOGS:

DN, DI (SP) (Run-1); ML (Run-2); No Sonic; 5" detail LTD-3600; 2" DI to surface casing; LogTech-Pioneer Wireline, Hays, KS, Jerrod Long, Log total depth (4621') was one foot long to rotary total depth (4620').

DRILL STEM TEST #1:

LKC "E-zone": Interval: 4035-4051 (16'); Blow: weak incr 1" IFP, no RB, weak incr 2-1/2" FFP, no RB; Times: 5-15-30-60; Recovery: 92' GIP, 117' HOCM (5%G, 35%O, 60%M); Pressures: HP: 1992-2008, SIP: 939-998, FP: 18-28, 30-51; BHT: 118 F; Trilobite Testing, Inc., Scott City, KS, Mike Roberts.

DRILL STEM TEST #2:

LKC "H-zone": Interval: 4130-4155 (25'); Blow: weak incr 1" IFP, no RB, weak incr BOB in 24 min FFP, no RB; Times: 5-15-30-60; Recovery: 62' GIP, 117' HOCM (20%G, 40%O, 40%M); Pressures: HP: 2052-2030, SIP: 1055-1088, FP: 20-31, 37-60; BHT: 117 F; Trilobite Testing, Inc., Scott City, KS, Mike Roberts.

DRILL STEM TEST #3:

LKC "J-zone": Interval: 4185-4206' (21'); Blow: weak incr 1/2" IFP; no RB, weak incr 4" FFP, no RB; Times: 5-15-30-60; Recovery: 239' SOCM (3%O, 97%M); Pressures: HP: 2103-2034; SIP: 323-320; FP: 19-34, 38-104; BHT: 123 F; Trilobite Testing, Inc., Scott City, KS, Mike Roberts.

DRILL STEM TEST #4:

LKC "K-zone": Interval: 4220-4236 (16'); Blow: weak incr 4" IFP, no RB, weak incr BOB 12 min FFP, 1" RB FSIP; Times: 5-15-30-60; Recovery: 92' GIP, 211' TF: 94' Oil (100%O, Grav 28), 117' GOCM (2%G, 38%O, 60%M); Pressures: HP: 2086-2092, SIP: 266-250, FP: 28-65, 73-99; BHT: 122 F; Trilobite Testing, Inc., Scott City, KS, Mike Roberts.

DRILL STEM TEST #5:

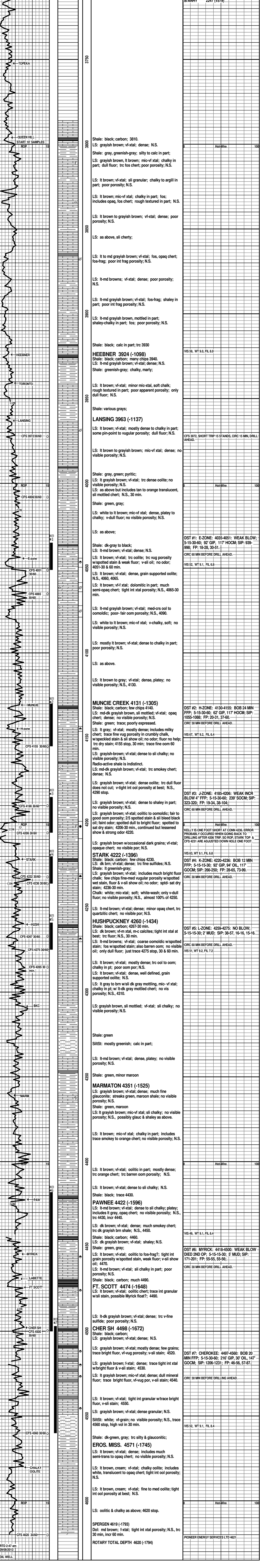
LKC "L-zone": Interval: 4259-4275 (16'); No Blow; Times: 5-15-15-30; Recovery: 2' mud w/oil spots; Pressures: HP: 2125-2089, SIP: 38-57, FP: 16-16, 15-16; BHT: 117 F; Trilobite Testing, Inc., Scott City, KS, Mike Roberts.

DRILL STEM TEST #6:

Pawnee, Myrick Station, Ft. Scott: Interval: 4418-4500 (82'); Blow blow died at 2nd open; Times: 5-15-15-30; Recovery: 5' mud w/oil spots (100%M); Pressures: HP: 2227-2289, SIP: 171-201, FP: 55-55, 55-56; BHT: 118 F; Trilobite Testing, Inc., Scott City, KS, Mike Roberts.

DRILL STEM TEST #7:

Cherokee: Interval: 4497-4560 (63'); Blow: weak incr 2" IFP, no RB, weak incr BOB/20 min FFP, no RB; Times: 5-15-30-60; Recovery: 216' GIP, 177' TF: 30' Oil (100%O, 37 Grav), 147' GOCM (5%G, 15%O, 80%M); Pressures: HP: 2279-2237, SIP: 1206-1231, FP: 46-56, 57-87; BHT: 122 F; Trilobite Testing, Inc., Scott City, KS, Mike Roberts.



RTD 2-47 am
09/08/2013
OIL WELL