

**LINN OPERATING INC. LEIGH #5 ATU-242**

195' FNL  
 276' FWL  
 NW/4 OF NW/4 OF NW/4 OF  
 SECTION 27, T-28-S, R-38-W  
 LATITUDE: 37°35'25.80492" N  
 LONGITUDE: 101°28'13.28053" W  
 GROUND ELEVATION: 3110.6'



*Keller  
 Surveying &  
 Mapping*

2330 B LAKEVIEW DRIVE  
 AMARILLO, TEXAS 79109  
 PH: (806) 418-6253

DRAWN BY: MTK  
 APPROVED BY: JDK  
 SCALE: 1" = 200'  
 DATE: 11/05/13

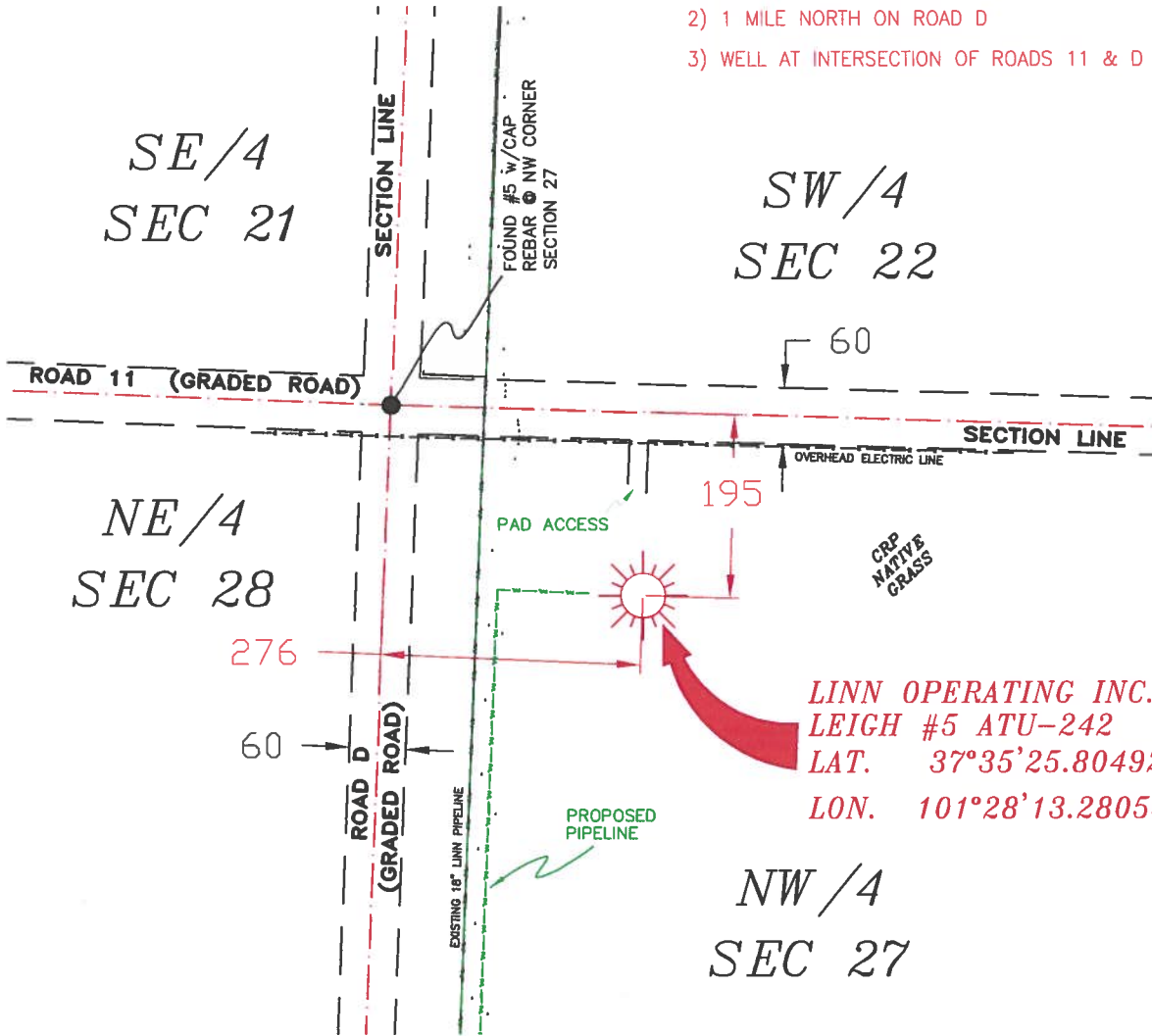


HABDAD LINE

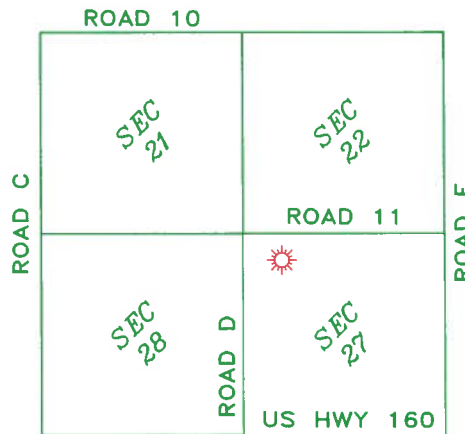
2225 W. OKLAHOMA AVE.  
 ULYSSES KANSAS 67880  
 PH: (620) 356-6940  
 FAX: (620) 356-6950

**DRIVING DIRECTIONS:**

- BEGINNING AT INTERSECTION OF US HWY 160 & HWY 25
- 1) 6 MILES WEST ON HWY 160
  - 2) 1 MILE NORTH ON ROAD D
  - 3) WELL AT INTERSECTION OF ROADS 11 & D



- NOTES:**
- 1) THIS PLAN DOES NOT REPRESENT A TRUE BOUNDARY SURVEY. THE FOOTAGES AND TIES SHOWN ARE FROM LINES OF OCCUPATION WHICH MAY NOT BE ACTUAL PROPERTY LINES.
  - 2) CONTRACTOR TO CONTACT ONE-CALL FOR FOREIGN UTILITY LOCATIONS PRIOR TO ANY EXCAVATION OR CONSTRUCTION.
  - 3) NAD 27 LAT-LONG



T-28-S, R-38-W  
 GRANT COUNTY, KANSAS



JOHN DAVID KELLER, L.S. NO. 1518

**LINN OPERATING INC.**  
**LEIGH #5 ATU-242**  
 SECTIONS 21, 22, 27 & 28  
 T-28-S, R-38-W  
 GRANT COUNTY, KANSAS