

GEOLOGIST'S REPORT

DRILLING TIME AND SAMPLE LOG

BACH OIL PRODUCTION

WELL: KATS UNIT #1

**LOC.: 1585' FSL & 1400' FWL
SEC. 10-1-19W
PHILLIPS COUNTY, KANSAS
API: 15-147-20717-00-00**

**DRILLING CONTR.: MURFIN RIG #24
SPUD: 08-27-13 COMP: 08-30-13
MUD UP: 2800' TYPE MUD: CHEM.
DRILL TIME: 3000 to' RTD
RTD: 3630' LTD:3628 '
SAMPLES SAVED: 3000'-RTD
GEOLOGIST: ROBERT J. PETERSEN**

ELEVATION

KB: 2118
GL: 2113
LOG MEASURED
FROM: KB

SURFACE CASING

20# 8 5/8 "
Casing set @ 222
w/175 SX

PRODUCTION CASING

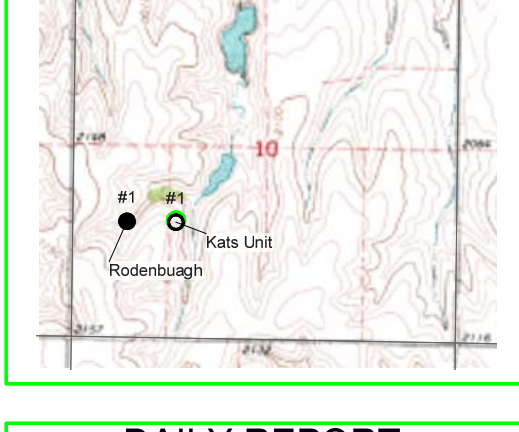
5 1/2" Casing set

WELL LOG SURVEYS

DIL/CDL/MICRO

ELECTRIC LOG TOPS

FORMATION	DEPTH	DATUM	POS.
Stone Corral	1770	+348	+3
Base Stone Corral	1792	+326	+5
Topeka	3121	-1003	+8
Heebner	3322	-1204	+8
Toronto	3350	-1232	+8
Lansing	3369	-1251	+8
Muncie Creek	3483	-1365	+5
Stark	3549	-1431	+7
BKC	3590	-1472	+8



REFERENCE WELL:

Bach Oil Prod.
Rodenbaugh #1
1585' FSL & 733' FWL
10-1-19W

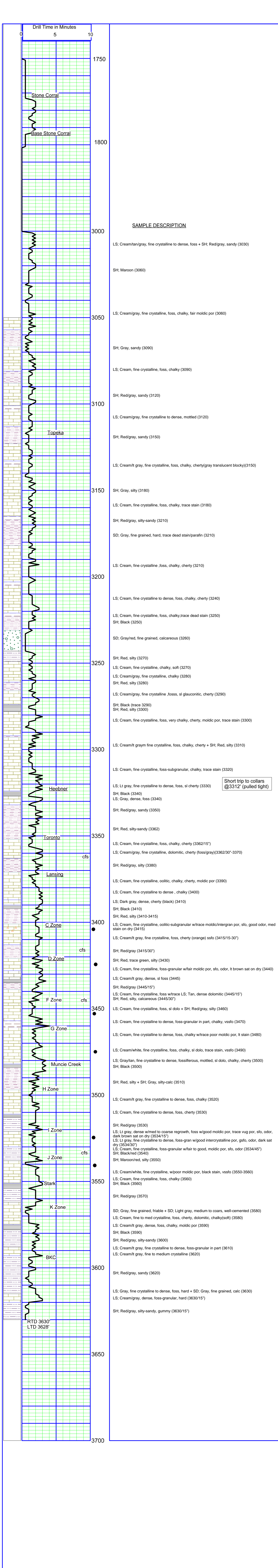
REMARKS AND RECOMMENDATIONS

Pipe was run to further test this well.

Robert J. Petersen

**DAILY REPORT
@7:00 A.M.**

08-26-13 MIRU
08-27-13 SPUD/SET SURF.
Drilled out from surface
@10:45 PM
08-28-13 1280' Drilling
08-29-13 2930' Drilling
08-30-13 3540' Drilling



Short trip to collars @3312' (pulled tight)