

LITHOLOGY STRIP LOG

WellSight Systems

Scale 1:240 (5"=100') Imperial

Well Name: Theda Rose "A" #1-13
Location: 160' FNL & 1875' FWL, Sec. 13-T27S-R20W, Kiowa Co., KS.
Licence Number: 15-097-21777-0000 Region: Wildcat
Spud Date: 11/22/2013 Drilling Completed: 12/1/2013
Surface Coordinates: 160' FNL & 1875' FWL, Sec. 13-T27S-R20W

Bottom Hole Same as Above
Coordinates:
Ground Elevation (ft): 2263' K.B. Elevation (ft): 2274'
Logged Interval (ft): 3350' To: 4923' Total Depth (ft): 4923'
Formation: Mississippian at Total Depth
Type of Drilling Fluid: Freshwater/Gel to 3038'; Chemical Gel 3038' to 4923'

Printed by MUD.LOG from WellSight Systems 1-800-447-1534 www.WellSight.com

OPERATOR

Company: Strata Exploration, Inc.
Address: P.O. Box 401
Fairfield, IL. 62839-0401

GEOLOGIST

Name: Jon D. Christensen
Company: Consulting Petroleum Geologist
Address: 9002 W. Silver Hollow St.
Wichita, KS. 67205-8856

Cores

None Taken

DSTs

DST #1(Lansing 'A') 4213' - 4229'(Corrected Depth to Log) Test Times 15"-45"-30"-60" IFP Weak Blow built to 1.5", FFP Weak Surface Blow throughout, no Blowback on SI's; REC: 15' Watery Mud(20%W, 80%M), no Shows of oil or gas, CI 76,000, Mud 4000; IFP 15-20#, ISIP 1336#, FFP 25-33#, FSIP 1341#, IHP 2009#, FHP 1855#, BHT 112 Deg. F.

DST #2(Lansing "B") 4237' - 4256'(Corrected Depths to Log) Test Times 15"-45"-45"-90" IFP Weak Blow built to 5", FFP Fair to Good 8" Blow, no Blowback on SI's; REC: 275' Gsy SOCMW(3%G, Trc O, 70%W, 27%M) CI 82,000, Mud 4600; IFP 16-66#, ISIP 1443#, FFP 70-153#, FSIP 1438#, IHP 2065#, FHP 2035#, BHT 115 Deg. F.

DST #3(Cherokee/Miss.) 4774' - 4857'(Corrected Depths to Log) Test Times 15"-45"-30"-60" IFP Weak 0.5" Blow, FFP No Blow, no Blowback on SI's; REC: 20' SOCM(2%O, 98%M), no Water; IFP 19-22#, ISIP 181#, FFP 24-25#, FSIP 92#, IHP 2391#, FHP 2224#, BHT 118 Deg. F.

Comments

11/21/13 MIRU Sterling Drilling Rig #2; 11/22/13 Spud at 1:45 AM., Drilling at 410'; 11/23/13 TD. 606' - Nipple up BOB; 11/24/13 Drilling at 1740'; 11/25/13 Drilling at 2830'; 11/26/13 Drilling at 3497'; 11/27/13 Drilling at 4072'; 11/28/13 TD. 4225' - DST #1; 11/29/30 Drilling at 4260'; 11/30/13 Drilling at 4646'; 12/1/13 TD. 4853' - TIH for DST #3, Reached TD. of 4923' at 8:55 PM; 12/2/13 RTD. 4923', LTD. 4920' - P & A.

Set new 8 5/8"(24#) Surface Casing at 601' with 350 sacks cement(Basic Energy Services). Cement did not Circulate. PD. 9:15 PM. 11/23/13. Use 75 Sx. through 1" to fill cement to cellar.

Surveys: 0.75 Deg. at 606'(Surface Casing); 1 Deg. at 4225'(DST #1); 0.5 Deg. at 4853'(DST #3).

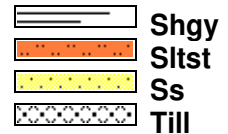
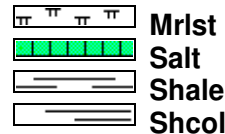
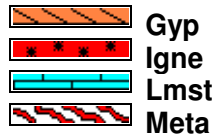
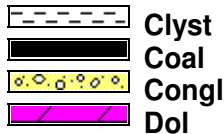
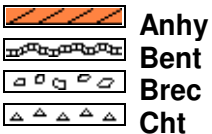
Pipe Strap at 4225'(DST #1): Strap 0.40' Long to the Board, no correction made to the Board.

LOG TOPS: Stotler Lmst. 3424(-1150), Howard 3626(-1352), Queen Hill Shale 3930(-1656), Heebner Shale 4064(-1790), Toronto 4086(-1812), Brown Lmst. 4201(-1927), Lansing 'A' 4210(-1936), Lansing 'B' 4233(-1959), Lansing/KC 'H' 4382(-2108), KC 'I' 4439(-2165), Stark Shale 4531(-2257), Swope 4542(-2268), Hertha 4576(-2302), Base Kansas City 4610(-2336), Marmaton 4652(-2378), Pawnee 4696(-2422), Cherokee Shale 4746(-2472), Miss. Chert 4822(-2548), Miss. Osage Marker 4860(-2586).

NOTE: This log was shifted downward by 4' to 5' for correlation purposes with the Halliburton Logs.

After review of the Halliburton Logs, DST data, structural position and lack of commercial amounts of hydrocarbons, the operator elected to Plug and Abandon the Theda Rose 'A' #1-13 at RTD. 4923' on 12/2/13.

ROCK TYPES



ACCESSORIES

MINERAL
 Anhy
 Arggrn
 Arg
 Bent
 Bit
 Brecfrag
 Calc
 Carb
 Chtdk
 Chtlt
 Dol
 Feldspar
 Ferrpel
 Ferr
 Glau

Gyp
 Hvymin
 Kaol
 Marl
 Minxl
 Nodule
 Phos
 Pyr
 Salt
 Sandy
 Silt
 Sil
 Sulphur
 Tuff

FOSSIL
 Algae
 Amph
 Belm
 Bioclst
 Brach
 Bryozoa
 Cephal
 Coral
 Crin
 Echin
 Fish
 Foram
 Fossil
 Gastro
 Oolite

Ostra
 Pelec
 Pellet
 Pisolite
 Plant
 Strom

STRINGER
 Anhy
 Arg
 Bent
 Coal
 Dol
 Gyp
 Ls
 Mrst

Sltstrg
 Ssstrg

TEXTURE
 Boundst
 Chalky
 Cryxln
 Earthy
 Finexln
 Grainst
 Lithogr
 Microxln
 Mudst
 Packst
 Wackst

OTHER SYMBOLS

- POROSITY**
- E Earthy
 - F Fenest
 - X Fracture
 - Inter
 - Moldic
 - Organic
 - P Pinpoint

V Vuggy

- SORTING**
- W Well
 - M Moderate
 - P Poor

- ROUNDING**
- R Rounded
 - Subrnd
 - Subang
 - A Angular

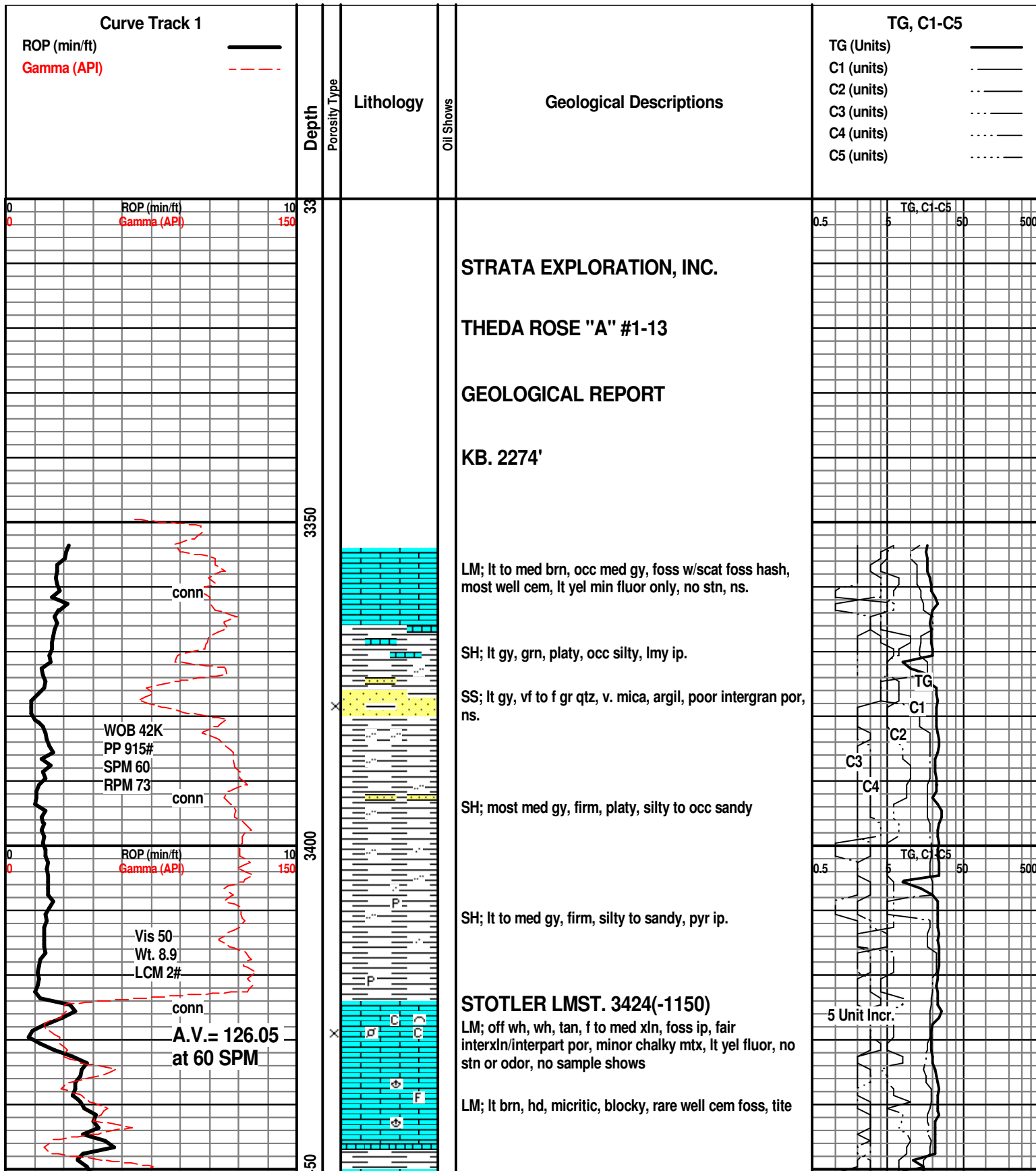
OIL SHOW

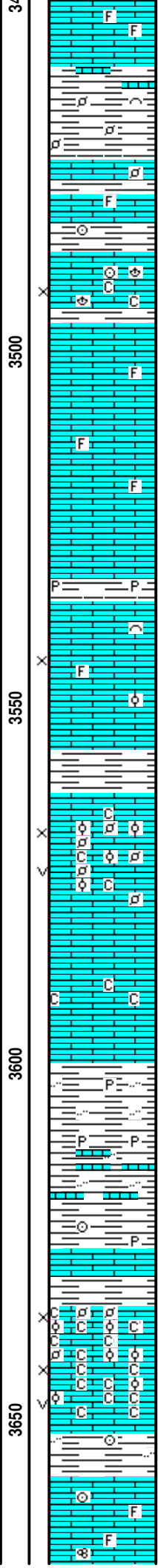
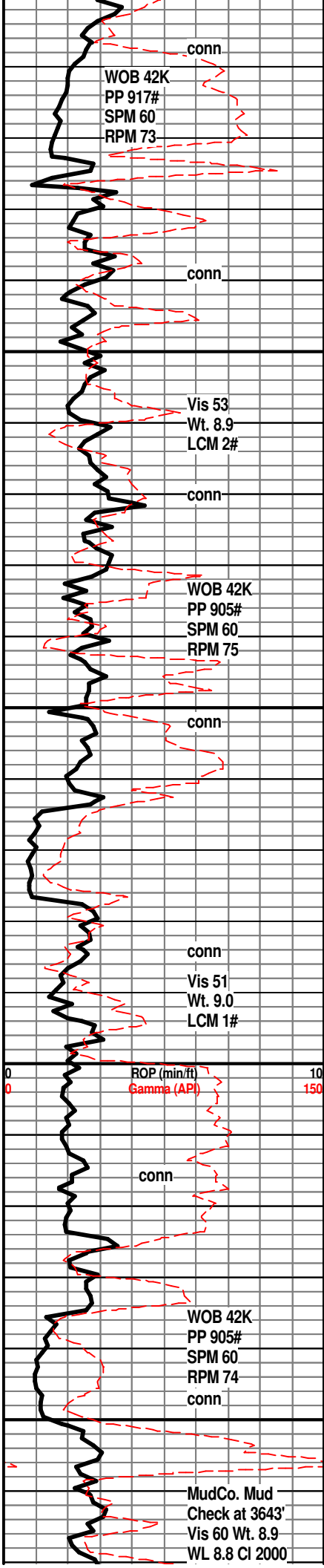
- Even

- Spotted
- Ques
- Dead

- INTERVAL**
- Core
 - Dst

- EVENT**
- Rft
 - Sidewall





LM; off wh, buff, fxln ip, most well cem, scat lt yel min fluor, no vis por, no stn or odor, ns.

SH; grn, gy grn, v. foss ip, scat pellets, interbdd lmy sh

LM; lt brn, tan, dense, rarely foss, no vis por, ns.

LM; tan to cream, buff, foss w/scat crin/bracs, scat poor interpart por - most well cem, minor soft chalky mtx, lt yel min fluor, no stn/odor, ns.

LM; tan to lt brn, buff, foss ip, most dense - blocky, interbdd hd micrite, no vis por, no fluor, ns.

LM; lt gy to lt gy brn, dense, micritic, tite

SH; med to dk gy, platy, occ pyr

LM; lt to med brn, occ med gy, fxln w/rare foss mat, trc poor interpart por, dull yel to no fluor, no stn, ns.

SH; med to dk gy, platy, calc

LM; tan to cream, buff, off wh, foss w/scat pellets and ooids, weakly cem - fair interpart w/scat vug por, some chalky mtx, lt yel min fluor, no stn or odor, no gas kick, barren, ns.

LM; off wh, wh, buff, fxln w/some sucrosic text, fair interxln por, partly chalky, soft ip, dull yel to no fluor, ns.

SH; lt gy, grn, platy to flakey

SH; grn, gy grn, maroon, varic ip, scat silty sh, occ pyr, firm, interbdd hd lmy sh strngs.

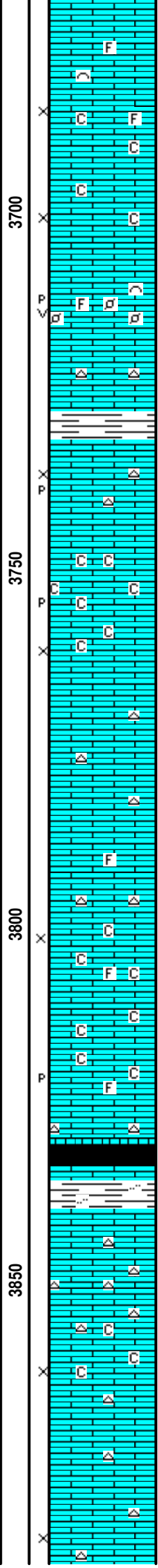
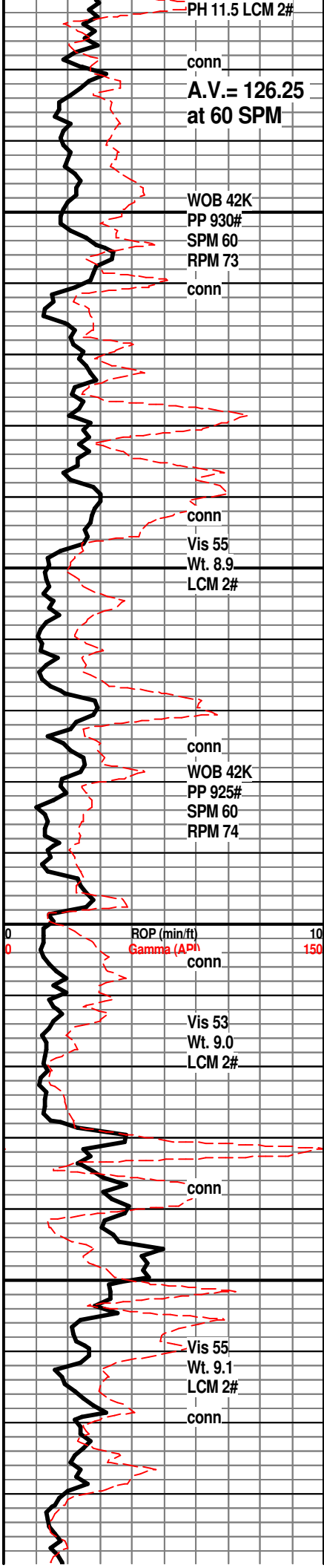
HOWARD 3626(-1352)
LM; med/dk brn, dense, pyr ip.
LM; lt brn, tan, foss - oolitic/pelletal, well cem at top, bcm oolitic and very chalky - soft, fair interpart por, lt yel min fluor, no stn or odor, no gas kick, barren, ns.

LM; wh, off wh, buff, f to med xln, scat cse spar calc, v. chalky - soft, poor interxln w/scat small vug por, lt yel min fluor, ns.

SH; med gy, silty, foss ip.

LM; tan to buff, cream, f to med xln, scat foss mat, most well cem, no vis por, no fluor, ns.





LM; off wh, wh, buff, fxln, rare poor interxln por, occ chalky mtx, no fluor, ns.

LM; tan to lt brn, buff, foss w/scat pellets and foss hash, fair small p-p and vug por, lt yel min fluor, no stn, no gas kick, ns.

LM; lt brn, tan, dense, scat tan to gy foss/spicular cht, tite

SH; med gy, gy brn, platy, firm

LM; tan to buff, lt brn, fxln w/trc poor interxln/p-p por, dull yel fluor, rare amber to tan cht, dull yel min fluor, no stn, ns.

LM; tan to lt brn, fxln, fair to gd interxln w/scat p-p por, soft ip, abnt chalky mtx, no fluor, no stn or odor, ns.

Gas Test at Extractor

LM; tan to off wh, buff, fxln w/interbdd dense micrite, no vis por, no fluor, rare off wh/tan cht, ns.

LM; off wh, buff, cream, f to med xln, some gran text, rarely foss, fair interxln w/rare p-p por, chalky ip, soft, no fluor, no stn or odor, ns.

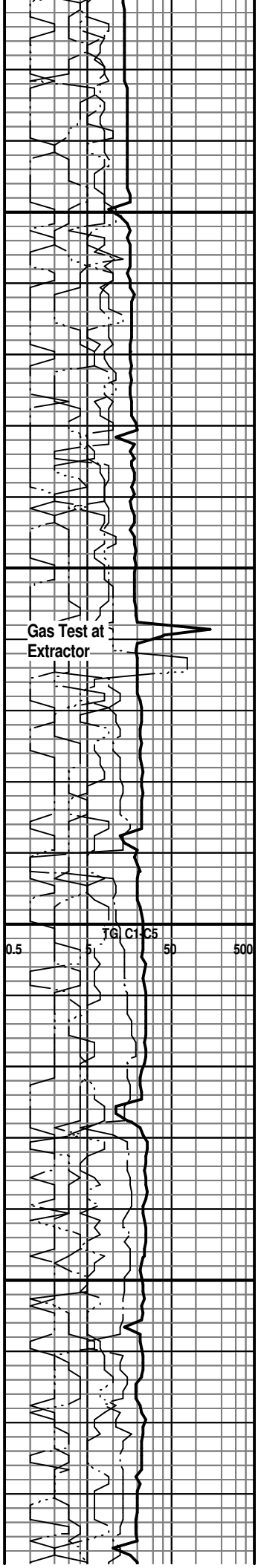
SH; dk gy/blk, fiss

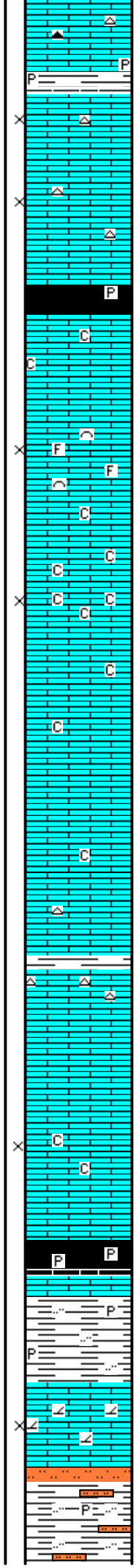
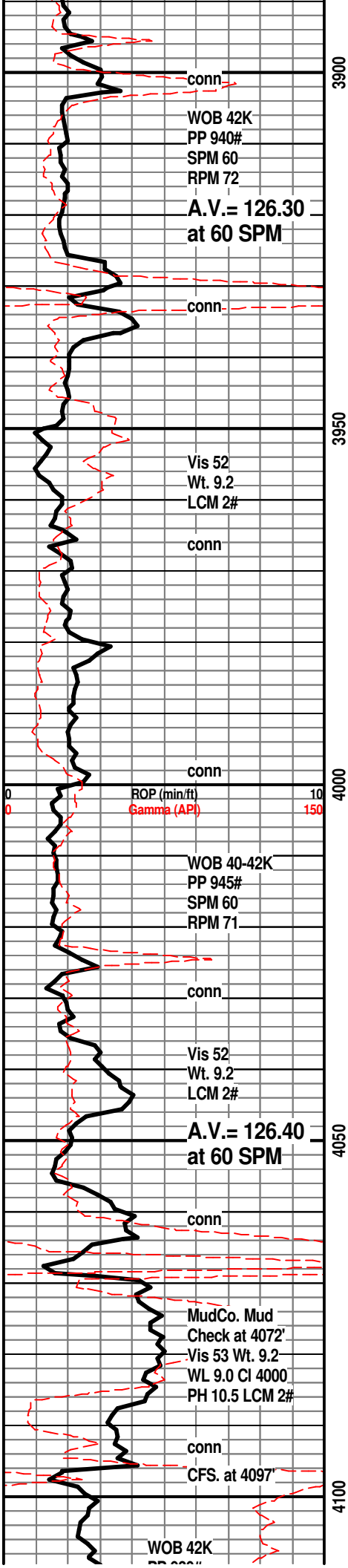
SH; med gy to gy grn, silty ip

LM; off wh, tan - buff, fxln w/abnt wh fresh cht, dense, blocky ip, lt yel min fluor, ns.

LM; off wh, tan, fxln w/rare gy cht, chalky mtx ip, soft, fair interxln por, no fluor, ns.

LM; off wh, wh, tan, f to med xln, fair interxln por, scat off wh to gy cht, occ spar calc xtals, no fluor, no stn or odor, ns.





SH; med gy, gy grn, pyr ip, firm

LM; tan to off wh, buff, f to med xln, poor to fair interxln por, occ chalky, interbdd off wh to wh cht, dull yel min fluor, no stn or odor, no gas kick, ns.

QUEEN HILL SHALE 3930(-1656)
SH; blk, carb ip, platy, rarely pyr
LM; tan to off wh, buff, fxln w/scat chalky mtx, firm, no vis por, ns.

LM; lt brn, foss w/occ cse xln lmst, fair to gd interxln/interpart por, dull yel min fluor, no stn or odor, ns.

LM; off wh, tan, fxln, poor to fair interxln por, incr. chalky mtx, dull yel fluor, ns.

LM; tan to off wh, lt brn, foss w/scat fxln lmst, incr. in shales w/some varic sh(sloughing), trc blk sh, scat lt yel fluor, no stn or odor, no sample shows

LM; off wh, tan, lt brn, f to med xln, rare cse xln w/spar calc, interbdd wh to off wh cht, dull yel min fluor, no stn or odor, ns.

LM; lt brn, tan, hd, micritic, blocky, tite

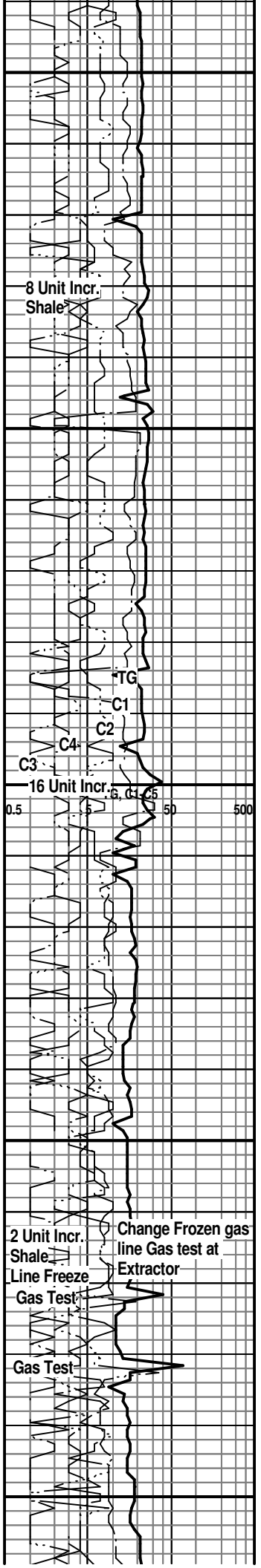
LM; tan to lt brn, f to med xln, scat cse opaque spar calc xtals, fair interxln por, trc soft chalky mtx, lt yel min fluor, no stn, ns.

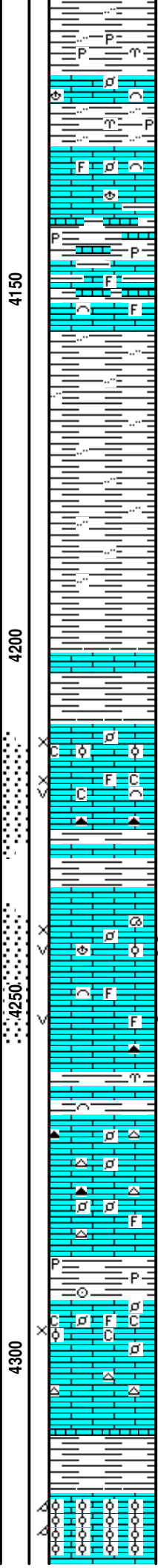
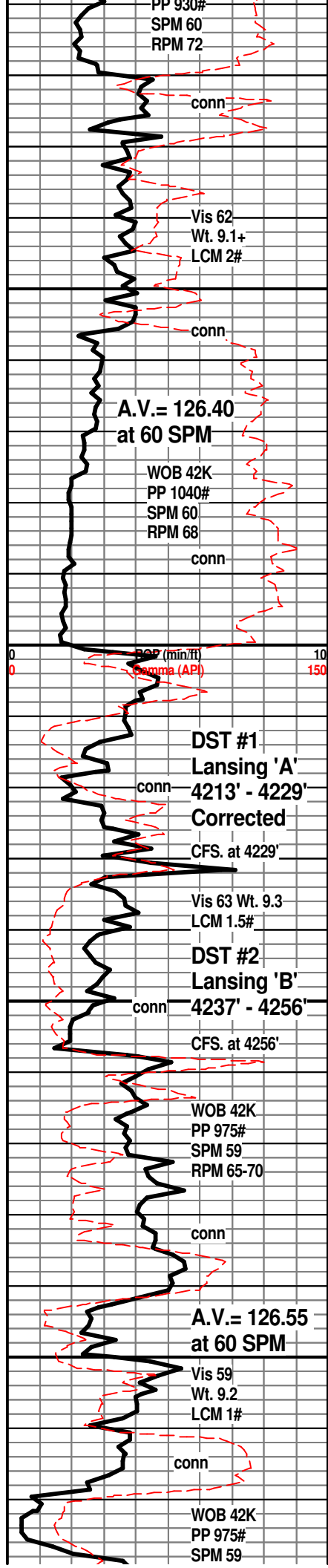
HEEBNER SHALE 4064(-1790)
SH; blk, carb ip, scat pyr, trc gas
LM; med to dk brn, dense, hd

SH; grn, gy grn, firm, rarely silty, occ dissem pyr.

TORONTO 4086(-1812)
LM; off wh, buff, wh, sucrosic text, partly dolomitic, poor interxln por, lt yel fluor, quest. gas bubbles, no stn/odor, no gas kick, looks tite

DOUGLAS SHALE 4096(-1822)
SH; lt gy, silty w/interbdd soft sltst, mica ip,





SH; med gy, firm, silty ip, scat pyr

LM; med/dk brn, blocky, scat well cem foss, tite

SH; lt gy, gy grn, silty, fiss.

LM; med brn, rare gy brn, most micritic, rare foss mat, no vis por, no fluor, ns.

SH; med gy brn, firm, interbdd hd shaly lmst, pyr ip.

LM; med to dk brn, scat cse foss frags, well cem, rare lt yel fluor, no stn, ns.

SH; lt to med gy, fiss, silty ip, some sticky

SH; lt to med gy, fiss, some v. soft - sticky, occ silty

BROWN LMST. 4201(-1927)
LM; med brn, hd, foss ip, well cem, trc pyr

LANSING 'A' 4210(-1936)
LM; off wh, tan, cream, foss w/some ooids, scat wh cht, minor soft chalky mtz, lt yel fluor
LM; off wh, buff, fxln w/scat foss mat, poor/fair interxln w/trc vug por, partly chalky mtz, lt yel fluor, few gas bubbles, no odor, no vis oil stn, no cut, gas show only

DST #1: Lansing 'A' 4213' - 4229'
LANSING 'B' 4233(-1959)
LM; off wh, buff, foss ip, scat vug por, sev. pcs. w/spotted w/even stn on few pcs, lt brn stn, faint to fair odor, fair vug and interxln por, occ med/brite yel fluor, gd cut, trc gas bubbles
LM; tan to lt gy brn, foss w/scat spar calc xtals, minor chalky mtz, trc spotted lt brn oil stn, no odor, fair vug por, dull/lt yel fluor
DST #2: Lansing 'B' 4237' - 4256'
Corrected Depths to Log
SH; med gy, grn, platy, occ foss.
LM; med brn, some mottled text, occ foss w/scat pellets and hash, well cem, cherty ip, no vis por, no fluor, ns.

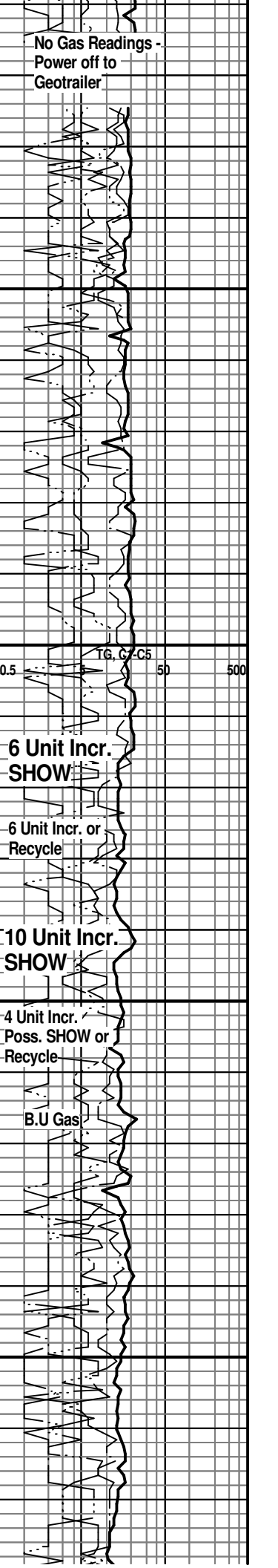
LM; tan to lt brn, dense, most micritic, blocky, occ cherty, tite

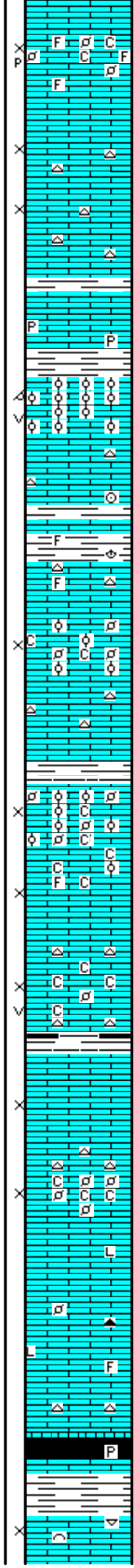
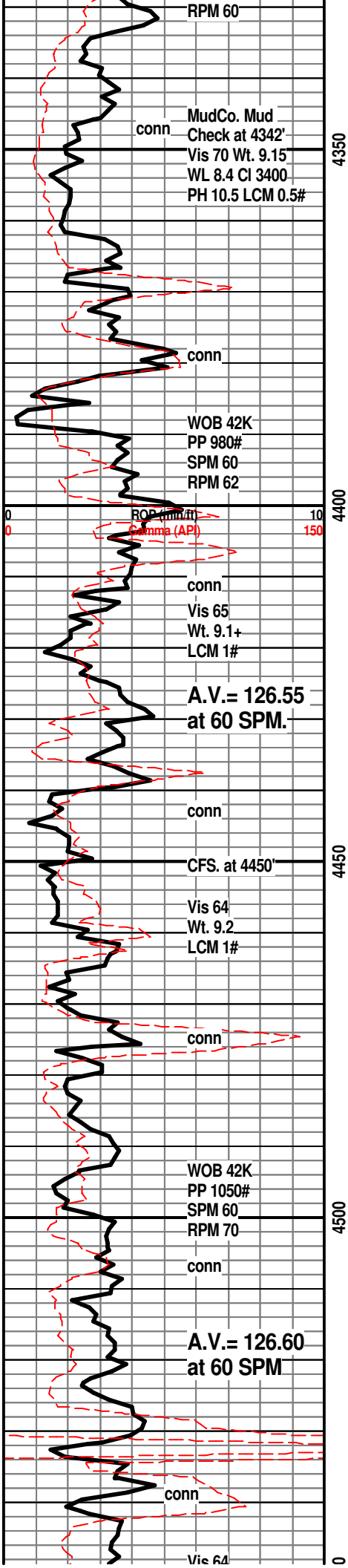
SH; grn, gy grn, platy, occ pyr

LANSING 'E' ZONE 4292(-2018)
LM; off wh, buff, tan, fxln w/scat foss mat, occ finely pelletal, poor interpart por, chalky mtz, lt yel min fluor, no stn or odor, no gas kick

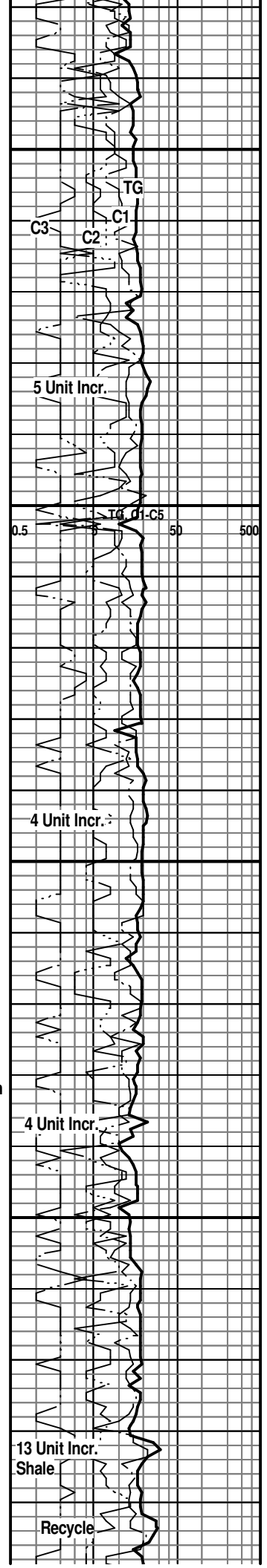
SH; med gy, grn, fiss

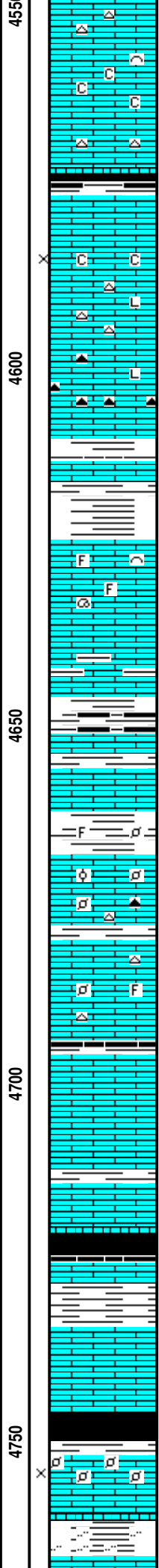
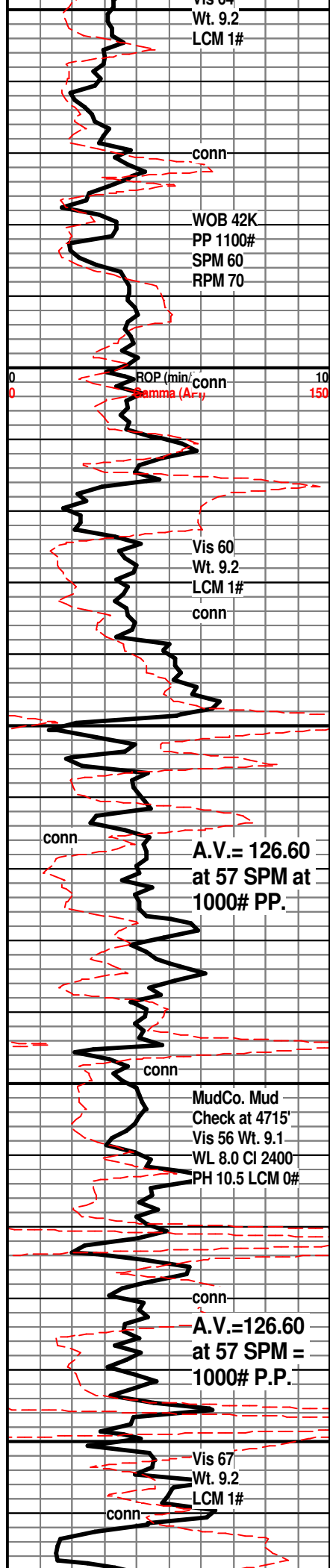
LANSING 'G' PORO. 4319(-2045)
LM; lt to med brn, oolitic, med to occ lrg molds, v. gd oomoldic por, brittle ip, some rextalized, dull yel fluor, no stn or odor, no gas kick





LM; tan to lt brn, foss ip, scat small pellets w/poor p-p/interpart por, minor chalky mtx, no fluor, ns.
 LM; tan to buff, f to med xln w/scat cse spar calc xtals, poor to fair interxln por, dull to occ lt yel min fluor, no stn or odor, no gas kick, scat off wh to wh cht
 LM; med to dk brn, foss ip, tite
 SH; med gy, gy grn, fiss, occ pyr
LANSING/K.C. 'H' 4382(-2108)
 LM; lt brn, tan, oolitic, med size molds, v. gd oomoldic w/scat vug por, lt/med yel min fluor only, brittle ip, no vis stn, no odor, no sample shows
 LM; tan to cream, buff, fxln to micritic, scat tan cht, no vis por, ns.
 SH; grn, gy grn, fiss, occ foss
 LM; tan to buff, lt brn, dense, scat off wh cht, rare well cem foss, tite
 LM; tan to cream, buff, foss w/scat ooids and pellets/hash, fair interpart por, minor chalky mtx, dull yel fluor, no vis oil stn, no gas kick, ns.
KANSAS CITY 'I' 4439(-2165)
 LM; lt brn, oolitic/pelletal, trc poor interpart por - most well cem, spotted med yel min fluor, no stn or odor, ns.
 LM; tan to off wh, wh, foss w/scat ooids/pellets, fair interpart por, occ soft chalk and chalky mtx, rare lt yel min fluor, no stn/odor, no sample shows
 LM; off wh, buff, fxln w/occ foss mat, much soft chalky mtx, no fluor, fair to poor interxln por, no stn, ns.
 SH; dk gy, trc blk, platy
KANSAS CITY 'J' 4477(-2203)
 LM; tan to cream, buff, med xln to gran text, fair interxln w/occ vug por, dull yel to no fluor, scat cse spar calc xtals, scat lt gy cht, no stn, no gas kick
 LM; tan to buff, off wh, fxln w/scat foss mat. occ small pellets, interbdd soft chalky mtx, dull yel min fluor, no stn or odor, ns.
 LM; tan to lt brn, rarely foss, most dense - some litho, scat tan/rare amber cht, tite
STARK SHALE 4531(-2257)
 SH; blk, carb ip, trc gas, rare pyr
SWOPE 4542(-2268)
 LM; tan to lt gy brn, foss ip, well cem, trc poor interpart





por, no fluor, no stn, ns.

LM; tan to lt brn, buff, most dense, micritic, scat gy to tan foss cht, occ off wh chalky lmst interbdd, no fluor, no stn or odor, ns.

SH; dy gy, some blk, platy, carb ip.
HERTHA 4576(-2302)
LM; off wh, tan, f to med xln, poor to fair interxln por, minor chalky mtz, no fluor, no stn or odor, ns.

LM; tan to lt brn, rare med brn, dense, scat gy to brn cht, hd, litho ip, ns.

LM; med to dk brn, hd, scat smoky/brn cht, litho, dense

BASE KANSAS CITY 4610(-2336)
SH; grn, gy grn, some varic, platy, interbdd brn shaly lmst.

PLEASANTON 4624(-2350)
LM; tan to lt brn, foss ip, well cem, no vis por, no fluor, ns.

LM; lt brn, gy brn, some argil, hd, blocky, no vis por, ns.

SH; grn, gy, blk, rust red, platy, occ foss

MARMATON 4652(-2378)
LM; lt brn, buff, rare pale grn tint(argil), dense, no vis por, no fluor, ns.

SH; med gy, gy grn, some varic, foss ip.

LM; tan to lt brn, occ foss w/small pellets/ooids, well cem, no vis por, scat amber to tan cht, no stn or odor, no sample shows

LM; tan to lt brn, foss ip, most dense - micritic, scat tan to off wh cht, no vis por, no fluor, ns.

SH; med gy, trc blk, occ pyr

PAWNEE 4696(-2422)
LM; tan to cream, foss(corals), most well cem, occ cse spar calc xtals, v. dull yel to no fluor, no stn, no gas kick, ns.

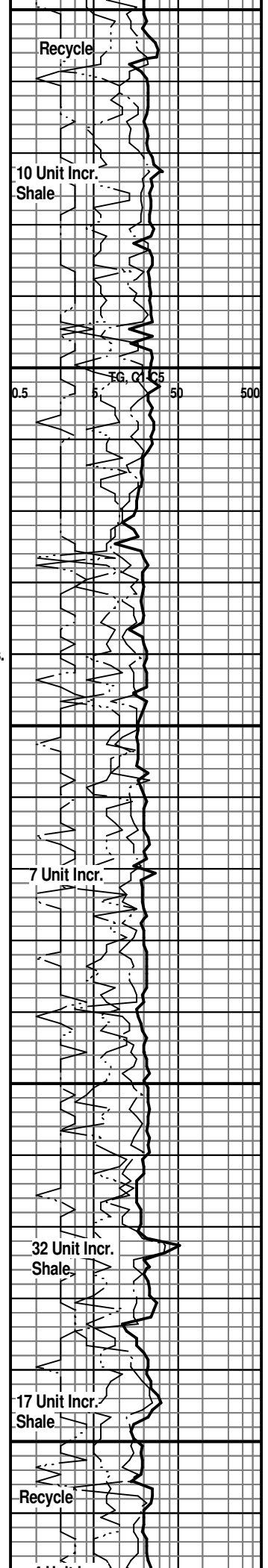
LM; tan to lt gy brn, dense, blocky, no vis por, ns.

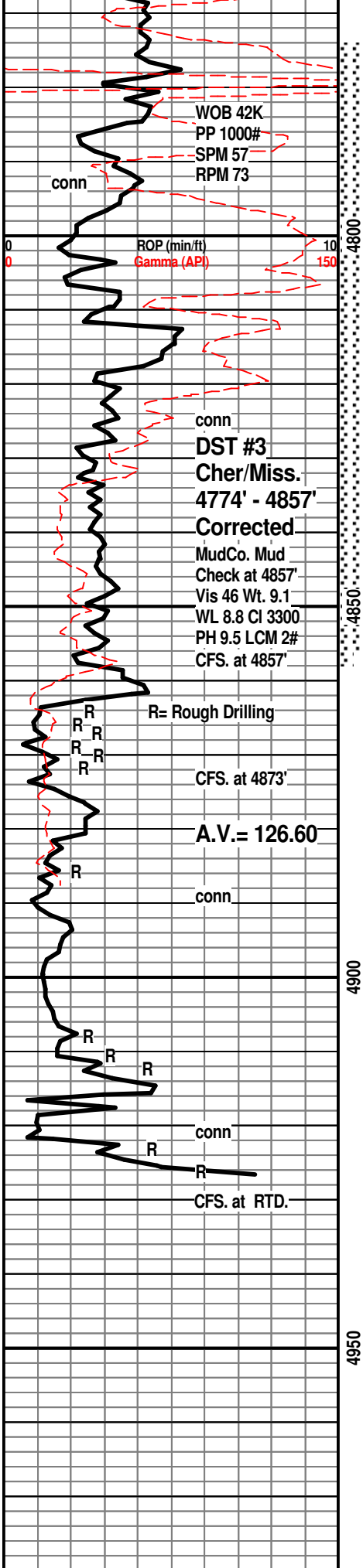
LABETTE SHALE 4721(-2447)
SH; blk, carb, blocky, gassy ip.

SH; grn, gy grn, fiss

LM; tan to buff, fxln w/cse spar calc xtals, lt yel min fluor, no vis por, no stn, ns.

CHEROKEE SHALE 4746(-2472)
SH; dk gy - blk, carb ip, platy
LM; lt to med brn, most dense, interbdd compact pelletal lmst, trc interpart por, dull/lt yel fluor, no vis stn, no odor, no gas kick
SH; varic, much rust red, soft, occ silty





WOB 42K
PP 1000#
SPM 57
RPM 73

ROP (min/ft)
Gamma (API)

conn
DST #3
Cher/Miss.
4774' - 4857'
Corrected
MudCo. Mud
Check at 4857'
Vis 46 Wt. 9.1
WL 8.8 CI 3300
PH 9.5 LCM 2#
CFS. at 4857'

R= Rough Drilling

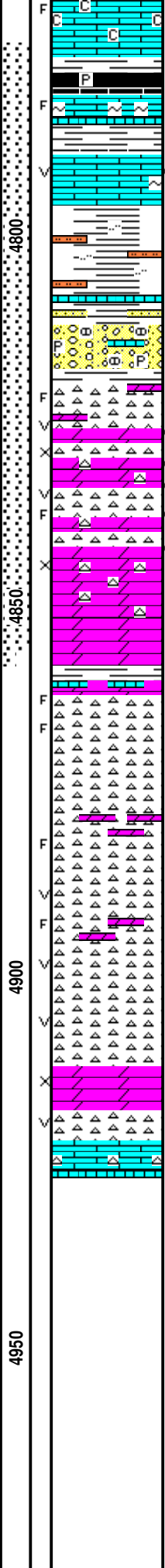
CFS. at 4873'

A.V.= 126.60

conn

conn

CFS. at RTD.



LM; off wh, wh, buff, fxln w/occ soft chalky mtz, tew fracs, most dense, trc lt yel fluor, no vis stn/odor, no shows of gas
SH; dk gy, blk, pyr ip, fiss
LM; lt gy, lt brn, fxln w/grn clay(glau) incl, trc fracs, trc blk tar/dead oil, no odor, no live show
LM; lt brn, med xln, scat calc. xtals w/med/dk brn oil stn, occ vug por, lt yel fluor, instant milky cut, no odor

BASE CHEROKEE LMST. 4796(-2522)
SH; varic, pred grn, gy, maroon, platy, trc soft sltst.

CONGL; weath nodular grn lmst, scat vf/f gr qtz argil ss, much sh, pyr ip, no stn or odor

MISSISSIPPI CHERT 4822(-2548)
CHT; wh, lt gy, opaque, pale yel, fresh, occ dk specks, no vis stn, some grainy dolo.
CHTY DOL; pale grn, off wh, grainy dolo w/fresh cht, weathered edges on chert w/scat vug por, scat live oil stn, gd odor, spotted/occ even med brn stn, fracs, occ cse qtz xtals w/live brn oil stn, med/brite yel fluor, gd cut
DOL; wh, sucrosic, poor to fair interxln por, lt to med yel fluor, occ oil stn, some barren, fair odor
CHTY DOL; off wh, wh, sucrosic, v. rare med brn stn, fair/gd odor, med yel fluor

DST #3: Cher/Miss. 4774' - 4857'
MISS. OSAGE MARKER 4860(-2586)
CHT; wh, lt gy, most fresh, rare weathered edges, fracs evident, rare lrg vug por, dull yel to no fluor, no vis oil stn, very faint odor, no cut, no vis oil stn, some lt brn sucrosic dolo w/med yel min fluor

CHT; wh, fresh, interbdd lt brn gritty dolomitic cht, some v. hd, scat fracs, no fluor, no stn, no gas kick, ns.

CHT; wh, lt gy, partly dolomitic, scat cse qtz xtals, occ fracs w/rare vug por, no fluor, ns.

DOL; tan, buff, sucrosic, fair interxln por, med yel min fluor, no vis stn, no odor, no gas kick
CHT; wh, lt gy, fresh, occ vug por, ns.
LM; tan, dense, cherty ip, tite

RTD. 4923' at 8:55 PM. 12/1/13

LTD. 4920'
Halliburton "Triple Combo" ACRT,
NEU/DEN w/PE, Microlog

NOTE: This log was shifted downward by 4' to 5' for correlation purposes with the Halliburton Logs.

