



**TRILOBITE
TESTING, INC.**

DRILL STEM TEST REPORT

Victory Operating Inc.

28-26s-15w Pratt, KS

6 N. Scottsdale
Wichita, KS 67230

Hamilton 1-28

Job Ticket: 52458

DST#: 1

ATTN: Keith Reavis

Test Start: 2013.10.04 @ 11:44:05

GENERAL INFORMATION:

Formation: **LKC B**

Deviated: No Whipstock: 0.00 ft (KB)

Time Tool Opened: 13:42:50

Time Test Ended: 18:51:50

Test Type: Conventional Bottom Hole (Initial)

Tester: Ryan Reynolds

Unit No: 48

Interval: **3912.00 ft (KB) To 3935.00 ft (KB) (TVD)**

Total Depth: 3935.00 ft (KB) (TVD)

Hole Diameter: 7.88 inches Hole Condition: Fair

Reference Elevations: 2062.00 ft (KB)

2049.00 ft (CF)

KB to GR/CF: 13.00 ft

Serial #: 8790

Inside

Press@RunDepth: 1154.56 psig @ 3913.00 ft (KB)

Start Date: 2013.10.04

End Date: 2013.10.04

Start Time: 11:44:10

End Time: 18:51:49

Capacity: 8000.00 psig

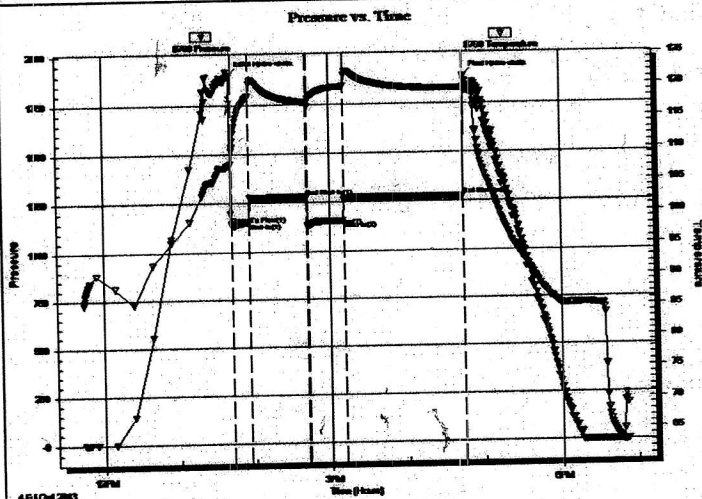
Last Calib.: 2013.10.04

Time On Btm: 2013.10.04 @ 13:41:20

Time Off Btm: 2013.10.04 @ 16:44:50

TEST COMMENT: IF: Strong blow . BOB immed. GTS @ 1 1/2 min.
IS: Weak blow . Surf. - 1"
FF: Strong blow . BOB immed. Gauged gas throughout
FS: Strong blow . BOB @ 57 min.

PRESSURE SUMMARY



Time (Min.)	Pressure (psig)	Temp (deg F)	Annotation
0	1902.92	107.53	Initial Hydro-static
2	1139.80	110.31	Open To Flow (1)
15	1151.29	118.39	Shut-In(1)
61	1277.16	117.32	End Shut-In(1)
61	1127.92	117.20	Open To Flow (2)
90	1154.56	119.82	Shut-In(2)
183	1274.19	119.40	End Shut-In(2)
184	1886.93	119.60	Final Hydro-static

Recovery

Length (ft)	Description	Volume (bbl)
60.00	Clean oil 100%oil 33grav	0.30

Gas Rates

	Choke (inches)	Pressure (psig)	Gas Rate (Mcf/d)
First Gas Rate	1.00	200.00	6163.75
Last Gas Rate	1.00	210.00	6451.23
Max. Gas Rate	1.00	210.00	6451.23



**TRILOBITE
TESTING, INC.**

DRILL STEM TEST REPORT

FLUID SUMMARY

Victory Operating Inc.

28-26s-15w Pratt, KS

6 N. Scottsdale
Wichita, KS 67230

Hamilton 1-28

Job Ticket: 52458

DST#: 1

ATTN: Keith Reavis

Test Start: 2013.10.04 @ 11:44:05

Mud and Cushion Information

Mud Type: Gel Chem

Cushion Type:

Oil API:

deg API

Mud Weight: 9.00 lb/gal

Cushion Length:

ft

Water Salinity:

4900 ppm

Viscosity: 59.00 sec/qt

Cushion Volume:

bbbl

Water Loss: 8.78 in³

Gas Cushion Type:

Resistivity: ohm.m

Gas Cushion Pressure:

psig

Salinity: 4800.00 ppm

Filter Cake: 0.02 inches

Recovery Information

Recovery Table

Length ft	Description	Volume bbl
60.00	Clean oil 100%oil 33grav	0.295

Total Length:

60.00 ft

Total Volume:

0.295 bbl

Num Fluid Samples: 1

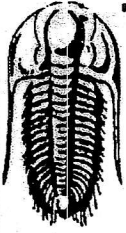
Num Gas Bombs: 1

Serial #: RR-1

Laboratory Name: Caraway

Laboratory Location: Liberal, KS

Recovery Comments:



**TRILOBITE
TESTING, INC.**

DRILL STEM TEST REPORT

GAS RATES

Victory Operating Inc.

28-26s-15w Pratt, KS

6 N. Scottsdale
Wichita, KS 67230

Hamilton 1-28

Job Ticket: 52458

DST#: 1

ATTN: Keith Reavis

Test Start: 2013.10.04 @ 11:44:05

Gas Rates Information

Temperature: 59 (deg F)
Relative Density: 0.65
Z Factor: 0.8

Gas Rates Table

Flow Period	Elapsed Time	Choke (inches)	Pressure (psig)	Gas Rate (Mcf/d)
1	10	1.00	200.00	6163.75
1	15	1.00	205.00	6307.49
2	10	1.00	200.00	6163.75
2	20	1.00	210.00	6451.23
2	30	1.00	210.00	6451.23

Serial #: 8790

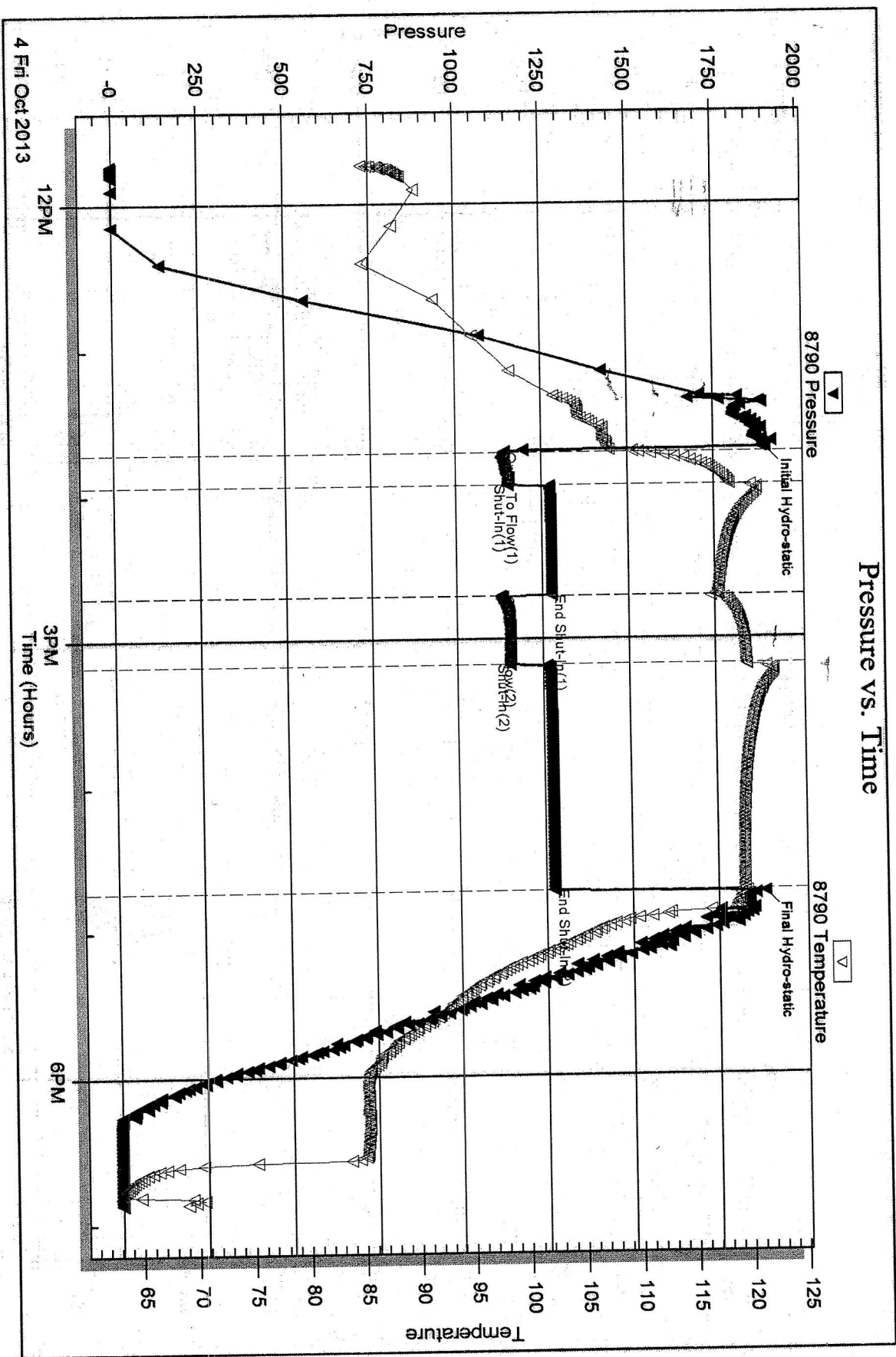
Inside

Victory Operating Inc.

Hamilton 1-28

DST Test Number: 1

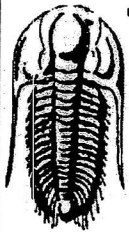
Pressure vs. Time



Triobite Testing, Inc

Ref. No: 52458

Printed: 2013.10.08 @ 13:48:48



TRILOBITE TESTING, INC.

DRILL STEM TEST REPORT

Victory Operating Inc.
6 N. Scottsdale
Wichita, KS 67230
ATTN: Keith Reavis

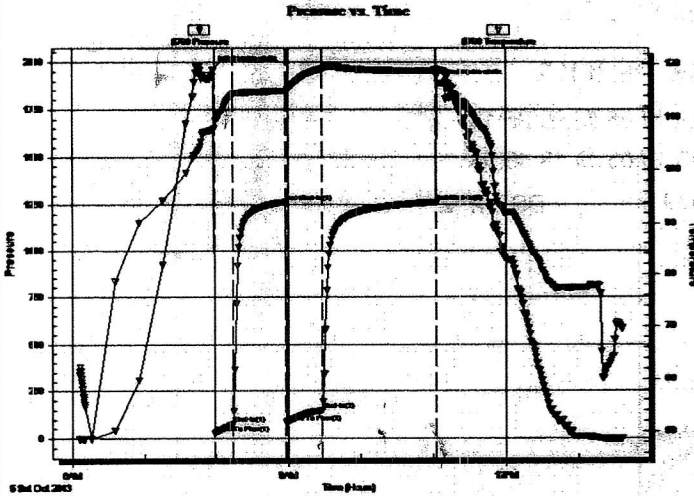
28-26s-15w Pratt,KS
Hamilton 1-28
Job Ticket: 52459 **DST# 2**
Test Start: 2013.10.05 @ 06:05:18

GENERAL INFORMATION:

Formation: **LKC G**
Deviated: No Whipstock: 0.00 ft (KB)
Time Tool Opened: 07:59:03
Time Test Ended: 13:36:03
Test Type: **Conventional Bottom Hole (Reset)**
Tester: **Ryan Reynolds**
Unit No: **48**
Interval: **3992.00 ft (KB) To 4026.00 ft (KB) (TVD)**
Reference Elevations: 2062.00 ft (KB)
Total Depth: 4026.00 ft (KB) (TVD) 2049.00 ft (CF)
Hole Diameter: 7.88 inches Hole Condition: Fair KB to GR/CF: 13.00 ft

Serial #: 8790 Inside
Press@RunDepth: 148.67 psig @ 3993.00 ft (KB) Capacity: 8000.00 psig
Start Date: 2013.10.05 End Date: 2013.10.05 Last Calib.: 2013.10.05
Start Time: 06:05:23 End Time: 13:36:02 Time On Btm: 2013.10.05 @ 07:57:18
Time Off Btm: 2013.10.05 @ 11:03:48

TEST COMMENT: IF: Strong blow . BOB @ 6 min.
ISI: No blow
FF: Strong blow . BOB @ 9 min.
FSI: Weak 2" BB



PRESSURE SUMMARY

Time (Min.)	Pressure (psig)	Temp (deg F)	Annotation
0	1959.39	107.64	Initial Hydro-static
2	26.39	107.90	Open To Flow (1)
17	75.54	114.30	Shut-In(1)
61	1264.63	114.93	End Shut-In(1)
62	84.03	114.64	Open To Flow (2)
92	148.67	119.19	Shut-In(2)
186	1263.51	118.83	End Shut-In(2)
187	1889.06	118.94	Final Hydro-static

Recovery

Length (ft)	Description	Volume (bbl)
180.00	OMCW 5%oil, 20%mud, 75%w tr	0.89
120.00	WGMCO 2%w tr, 23%gas, 34%mud, 41%w tr	90.60
0.00	505' GIP	0.00

* Recovery from multiple tests

Gas Rates

	Choke (inches)	Pressure (psig)	Gas Rate (Mcf/d)



**TRILOBITE
TESTING, INC.**

DRILL STEM TEST REPORT

FLUID SUMMARY

Victory Operating Inc.

28-26s-15w Pratt,KS

6 N. Scottsdale
Wichita, KS 67230

Hamilton 1-28

Job Ticket: 52459

DST#: 2

ATTN: Keith Reavis

Test Start: 2013.10.05 @ 06:05:18

Mud and Cushion Information

Mud Type: Gel Chem

Cushion Type:

Oil API:

deg API

Mud Weight: 9.00 lb/gal

Cushion Length:

ft

Water Salinity:

94000 ppm

Viscosity: 59.00 sec/qt

Cushion Volume:

bbbl

Water Loss: 8.78 in³

Gas Cushion Type:

Resistivity: ohm.m

Gas Cushion Pressure:

psig

Salinity: 4800.00 ppm

Filter Cake: 0.02 inches

Recovery Information

Recovery Table

Length ft	Description	Volume bbl
180.00	OMCW 5%oil, 20%mud, 75%w tr	0.885
120.00	WGMCO 2%w tr, 23%gas, 34%mud, 41%oil	0.599
0.00	505' GIP	0.000

Total Length: 300.00 ft

Total Volume: 1.484 bbl

Num Fluid Samples: 0

Num Gas Bombs: 0

Serial #: none

Laboratory Name:

Laboratory Location:

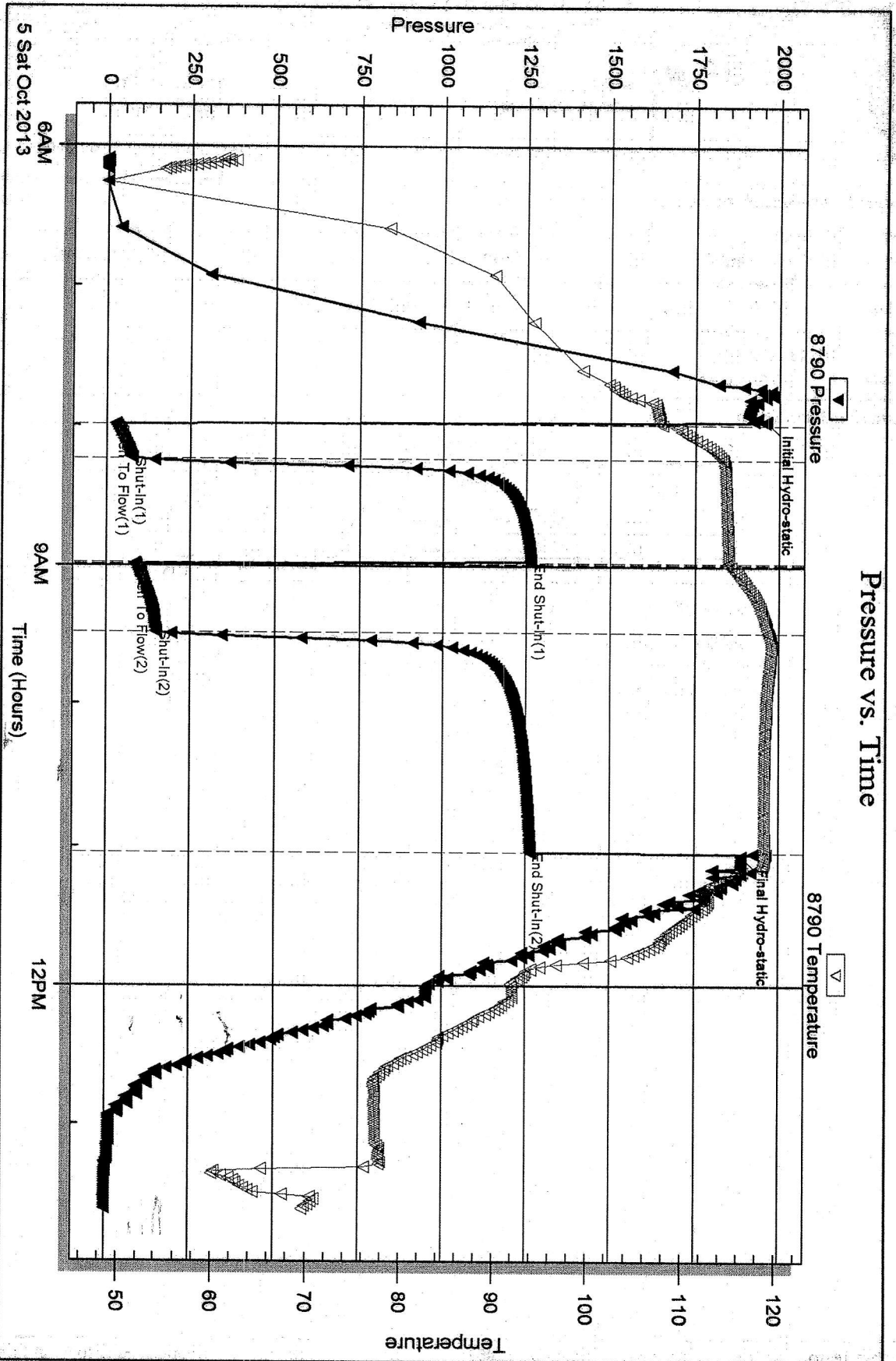
Recovery Comments:

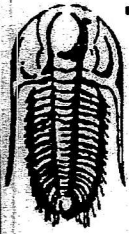
Serial #: 8790

Inside Victory Operating Inc.

Hamilton 1-28

DST Test Number: 2





**TRILOBITE
TESTING, INC.**

DRILL STEM TEST REPORT

Victory Operating Inc.

28-26s-15w Pratt,KS

6 N. Scottsdale
Wichita, KS 67230

Hamilton 1-28

ATTN: Keith Reavis

Job Ticket: 52460

DST#: 3

Test Start: 2013.10.05 @ 20:53:21

GENERAL INFORMATION:

Formation: **Lansing H**
 Deviated: No Whipstock: 0.00 ft (KB)
 Time Tool Opened: 23:02:36
 Time Test Ended: 05:36:36
 Interval: **4040.00 ft (KB) To 4070.00 ft (KB) (TVD)**
 Total Depth: 4070.00 ft (KB) (TVD)
 Hole Diameter: 7.88 inches Hole Condition: Fair

Test Type: Conventional Bottom Hole (Reset)
 Tester: Ryan Reynolds
 Unit No: 48
 Reference Elevations: 2062.00 ft (KB)
 2049.00 ft (CF)
 KB to GR/CF: 13.00 ft

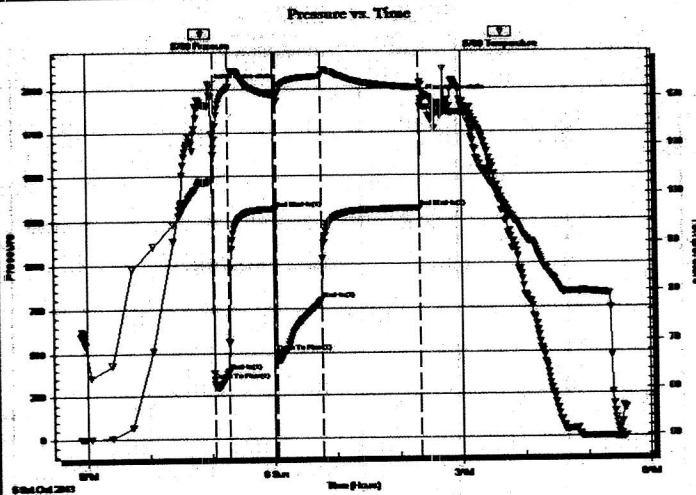
Serial #: 8790

Inside

Press@RunDepth: 798.05 psig @ 4041.00 ft (KB)
 Start Date: 2013.10.05 End Date: 2013.10.06
 Start Time: 20:53:26 End Time: 05:36:36

Capacity: 8000.00 psig
 Last Calib.: 2013.10.06
 Time On Btm: 2013.10.05 @ 22:58:51
 Time Off Btm: 2013.10.06 @ 02:21:21

TEST COMMENT: IF: Strong blow . BOB immed. GTS @ 4 min.
 IS: Strong blow . BOB throughout
 FF: Strong blow . BOB immed.
 FS: Strong blow . Oil to surf. 2 min. into.



PRESSURE SUMMARY

Time (Min.)	Pressure (psig)	Temp (deg F)	Annotation
0	2015.67	102.86	Initial Hydro-static
4	343.28	109.61	Open To Flow (1)
18	397.32	122.20	Shut-In(1)
63	1315.75	120.53	End Shut-In(1)
64	506.00	119.30	Open To Flow (2)
108	798.05	124.66	Shut-In(2)
201	1314.19	122.02	End Shut-In(2)
203	1940.01	122.64	Final Hydro-static

Recovery

Length (ft)	Description	Volume (bbl)
4028.00	Clean gassy oil	53.78

* Recovery from multiple tests

Gas Rates

	Choke (inches)	Pressure (psig)	Gas Rate (Mcf/d)
First Gas Rate	0.25	20.00	54.57
Last Gas Rate	0.25	1.00	24.43
Max. Gas Rate	0.25	49.00	100.58



**TRILOBITE
TESTING, INC.**

DRILL STEM TEST REPORT

FLUID SUMMARY

Victory Operating Inc.

28-26s-15w Pratt,KS

6 N. Scottsdale
Wichita, KS 67230

Hamilton 1-28

Job Ticket: 52460

DST#: 3

ATTN: Keith Reavis

Test Start: 2013.10.05 @ 20:53:21

Mud and Cushion Information

Mud Type: Gel Chem

Cushion Type:

Oil API:

deg API

Mud Weight: 9.00 lb/gal

Cushion Length:

ft

Water Salinity:

6000 ppm

Viscosity: 541.00 sec/qt

Cushion Volume:

bbbl

Water Loss: 7.99 in³

Gas Cushion Type:

Resistivity: ohm.m

Gas Cushion Pressure:

psig

Salinity: 6000.00 ppm

Filter Cake: 0.02 inches

Recovery Information

Recovery Table

Length ft	Description	Volume bbbl
4028.00	Clean gassy oil	53.779

Total Length: 4028.00 ft

Total Volume: 53.779 bbl

Num Fluid Samples: 1

Num Gas Bombs: 2

Serial #: RR-2

Laboratory Name:

Laboratory Location:

Recovery Comments:



**TRILOBITE
TESTING, INC.**

DRILL STEM TEST REPORT

GAS RATES

Victory Operating Inc.

28-26s-15w Pratt,KS

6 N. Scottsdale
Wichita, KS 67230

Hamilton 1-28

Job Ticket: 52460

DST#: 3

ATTN: Keith Reavis

Test Start: 2013.10.05 @ 20:53:21

Gas Rates Information

Temperature: 59 (deg F)
Relative Density: 0.65
Z Factor: 0.8

Gas Rates Table

Flow Period	Elapsed Time	Choke (inches)	Pressure (psig)	Gas Rate (Mcf/d)
1	10	0.25	20.00	54.57
1	15	0.25	28.00	67.26
2	10	0.13	13.00	10.26
2	20	0.25	49.00	100.58
2	30	0.25	20.00	54.57
2	40	0.25	10.00	38.71
2	45	0.25	1.00	24.43

Serial # 8790

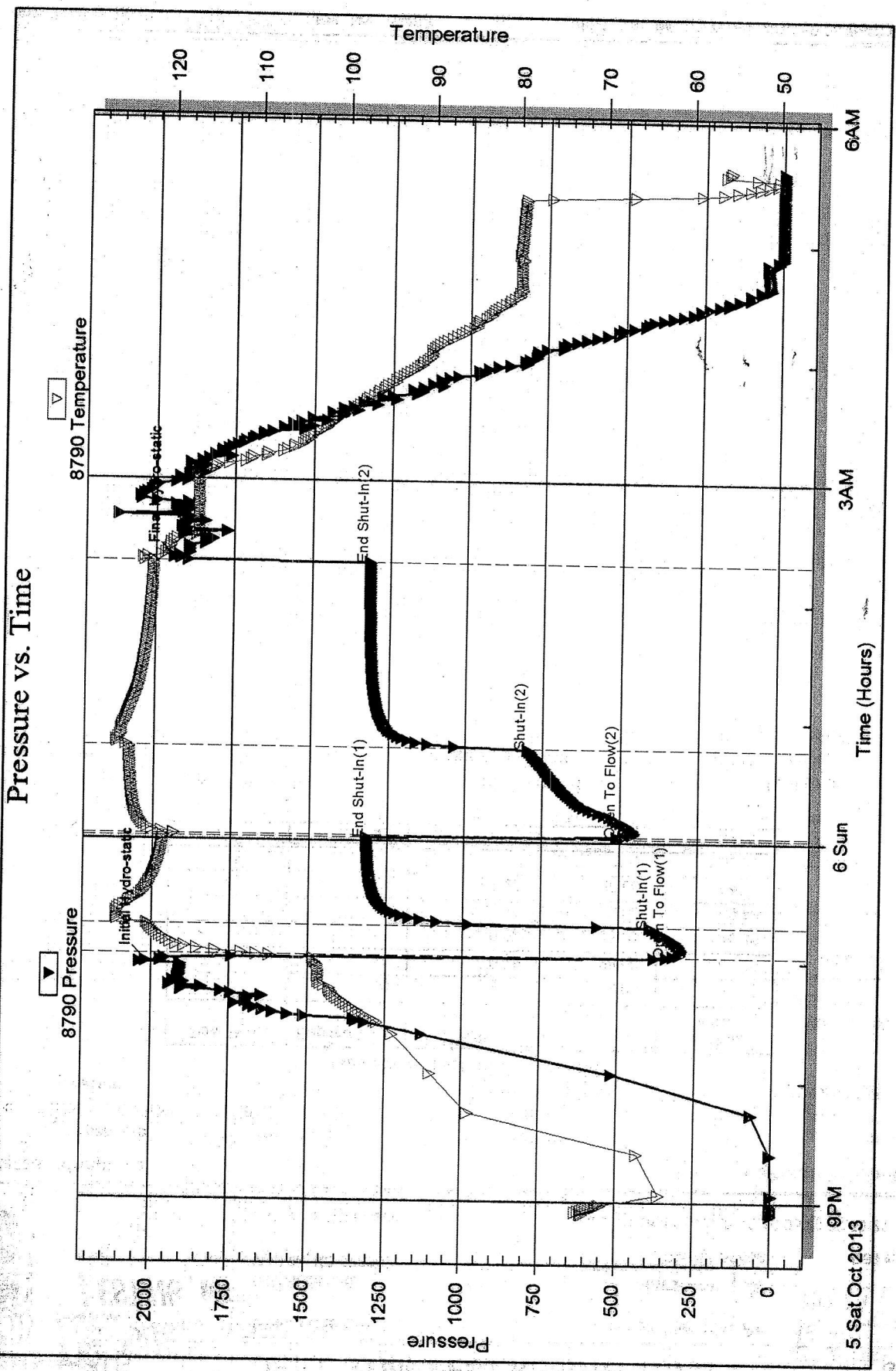
inside

Victory Operating Inc.

Hamilton 1-28

DST Test Number: 3

Pressure vs. Time



Tribble Testing, Inc

Ref. No: 52460

Printed: 2013.10.08 @ 13:51:05