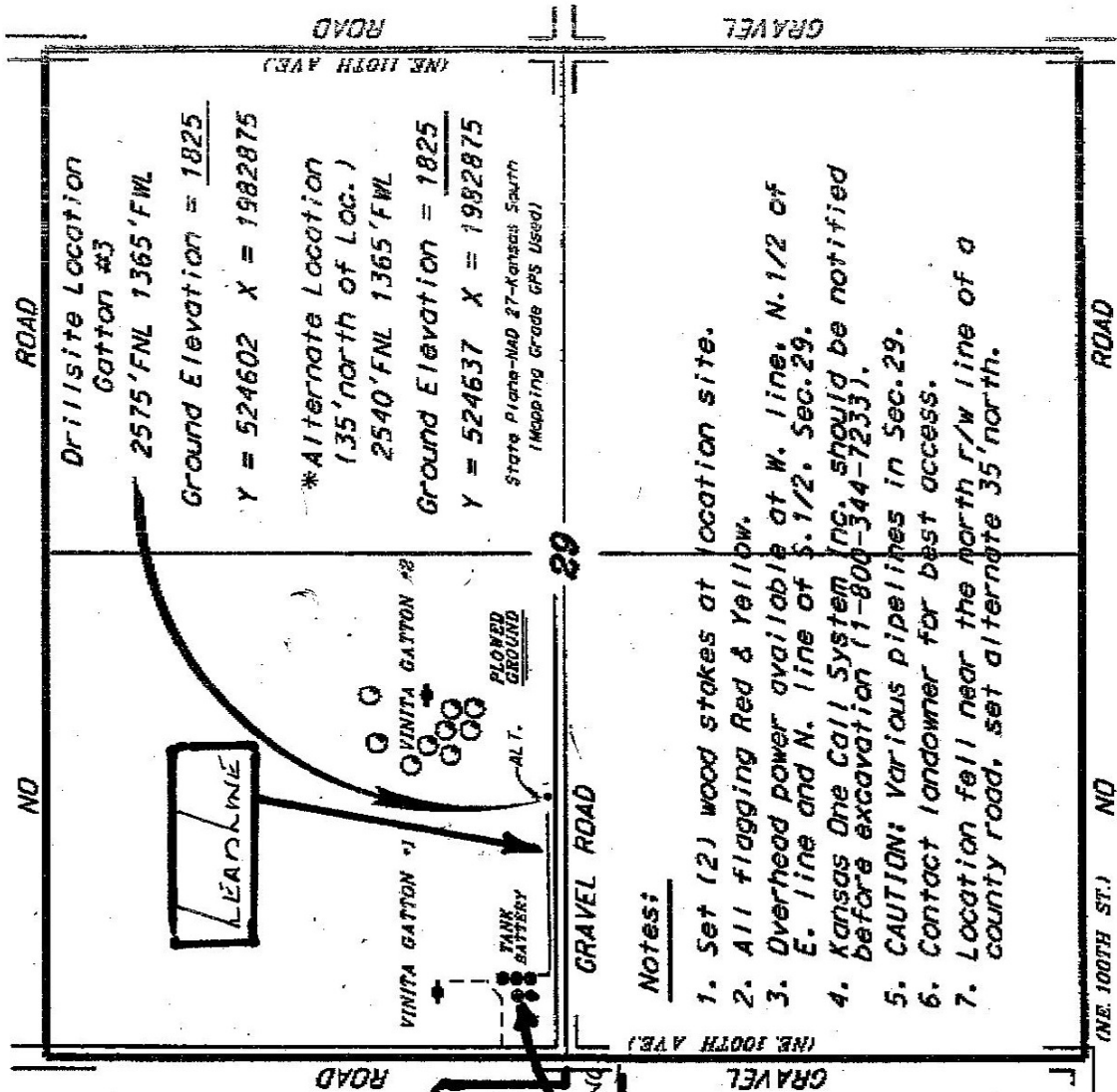


LAVETA OIL & GAS
GATTON LEASE
NW. 1/4, SECTION 29, T22S, R11W
STAFFORD COUNTY, KANSAS



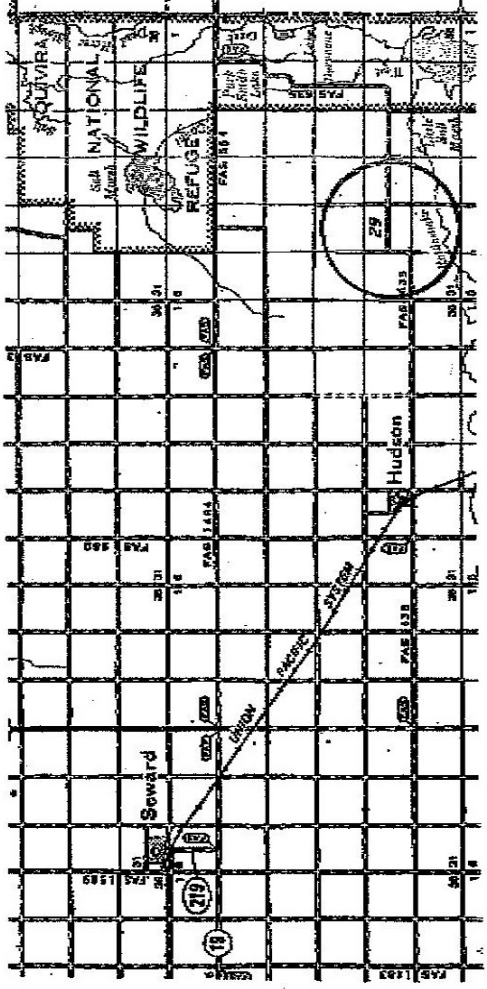
*Ingress and egress to location as shown on this plot is per usage only and may not be legally opened for public use. Contact landowner, tenant and county road department for access.

SET TANKS NEXT TO EXISTING ROAD

Notes:

1. Set (2) wood stakes at location site.
2. All flagging Red & Yellow.
3. Overhead power available at W. line, N. 1/2 of E. line and N. line of S. 1/2, Sec. 29.
4. Kansas One Call System (ng. should be notified before excavation (1-800-344-7233).
5. CAUTION: Various pipelines in Sec. 29.
6. Contact landowner for best access.
7. Location fell near the north r/w line of a county road, set alternate 35' north.

Drillsite Location
Gatton #3
2575' FNL 1365' FWL
Ground Elevation = 1825
Y = 524602 X = 1982875
*Alternate Location
(35' north of Loc.)
2540' FNL 1365' FWL
Ground Elevation = 1825
Y = 524637 X = 1992875
State Plane-NAD 27-Kansas South
(Mapping Grade GPS Used)



* Contouring was done using the best most and photographs available to us and upon a regular section of land containing 80 acres.
 • Approximate section lines were determined using the normal standard of care of airfield surveys practicing in the state of Kansas. The section corners, which establish the precise section lines, were not necessarily located, and the exact location of any section corners was not determined. The survey was done for the purpose of providing a general location of the section lines and any other features existing thereon. We do not warrant the accuracy of the section lines or any other features shown hereon. We do not warrant the accuracy of the section lines or any other features shown hereon. We do not warrant the accuracy of the section lines or any other features shown hereon.
 • Elevations derived from National Geographic Vertical Datum.