

ADVANTAGE ELEVATIONS

OIL FIELD SURVEYORS

BOX 8604 - PRATT, KS 67124
(620) 672-6491

123135

INVOICE NO.

CORAL COAST PETROLEUM LC
OPERATOR

1-17
NO.

HARDEN
FARM

Clark
COUNTY

17 32s 21w
S T R

150' N of C E/2 SE
LOCATION

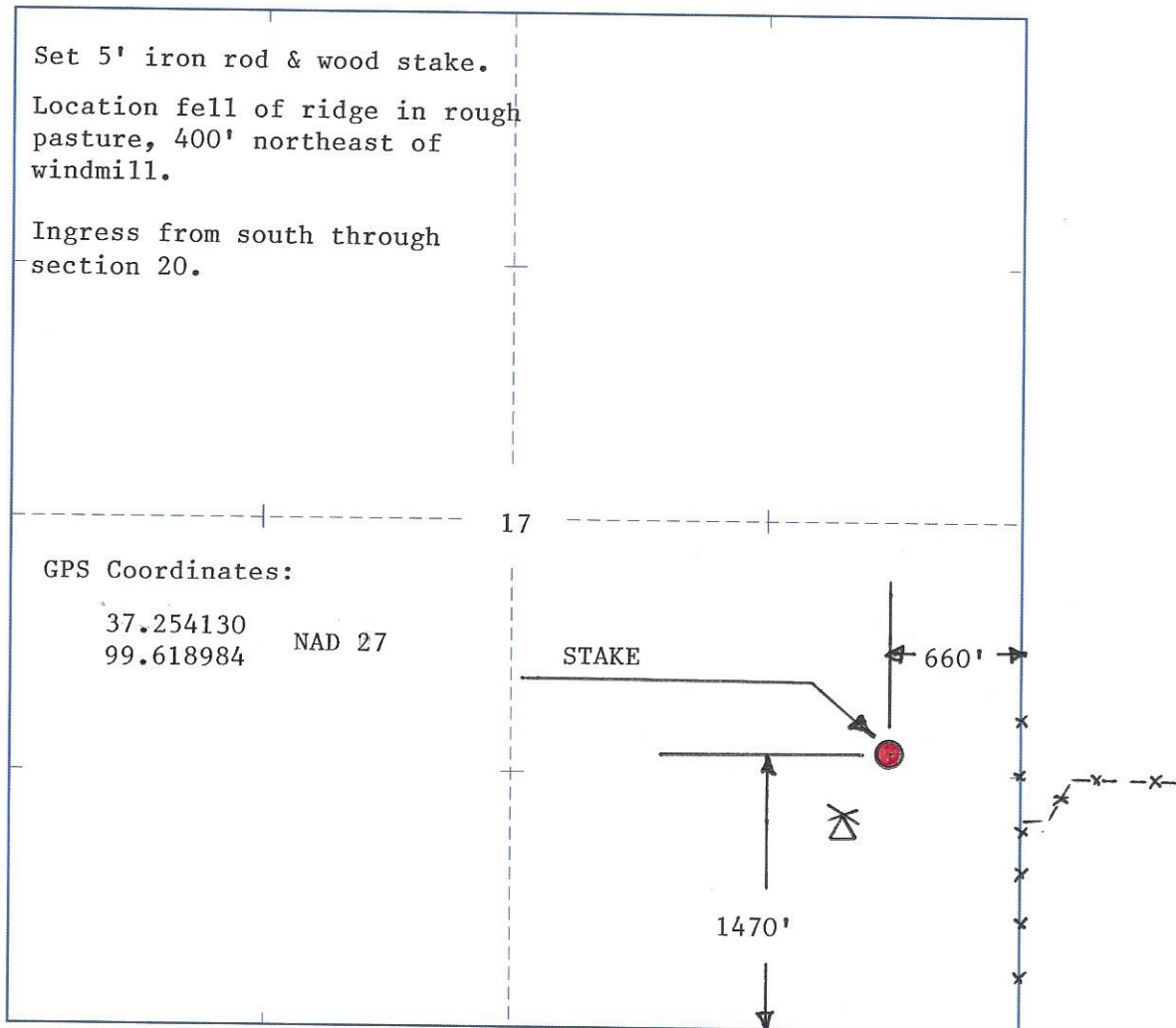
ELEVATION: 2133' GR



CORAL COAST PETROLEUM LC
8100 E 22nd St No,
Bldg 600, Ste R
Wichita, KS 67226

AUTHORIZED BY: Daniel Reynolds

SCALE: 1" = 1000'



DATE STAKED: 12/13/13

ADVANTAGE ELEVATIONS

OIL FIELD SURVEYORS

BOX 8604 - PRATT, KS 67124
(620) 672-6491

124135
INVOICE NO.

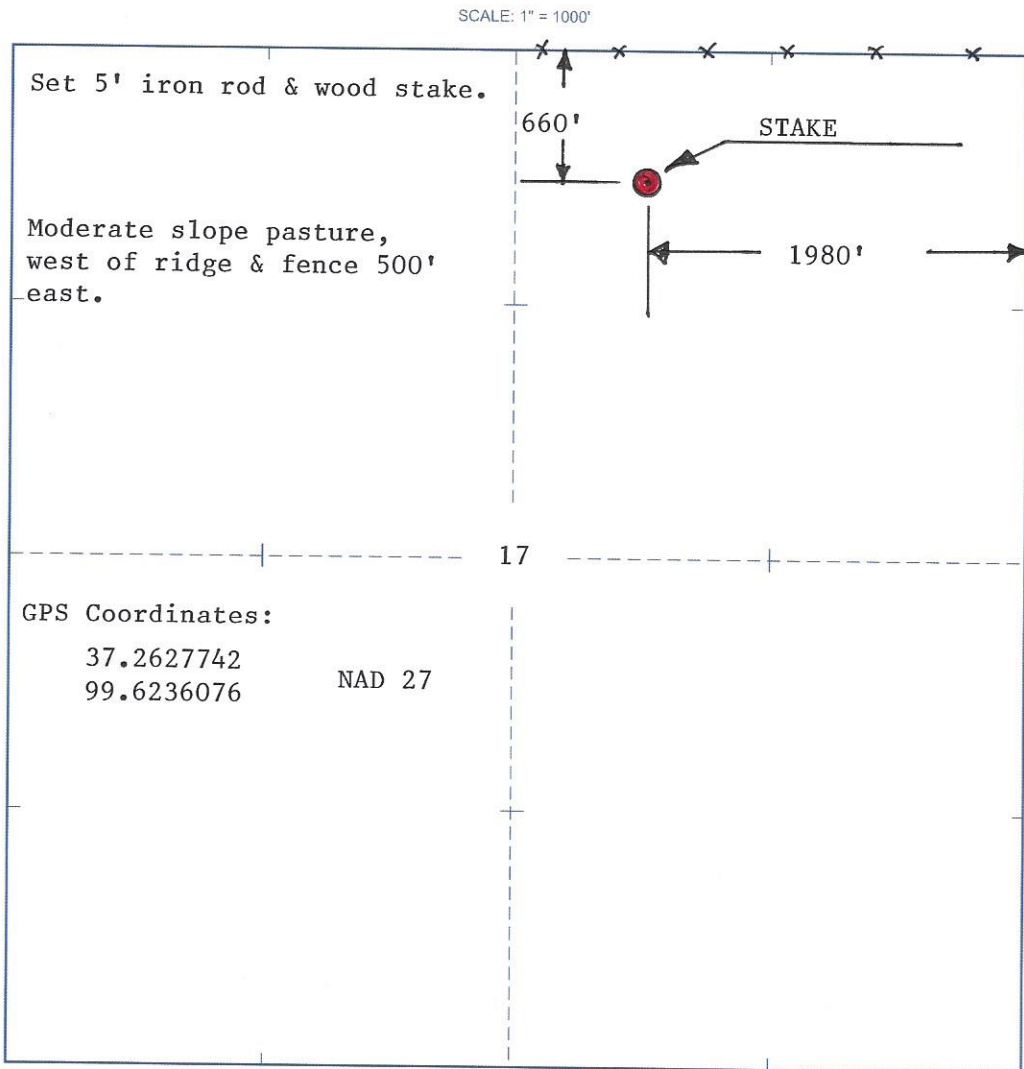
CORAL COAST PETROLEUM LC
OPERATOR
NO. _____ FARM _____

Clark 17 32s 21w C NW NE
COUNTY S T R LOCATION

ELEVATION: 2114' GR

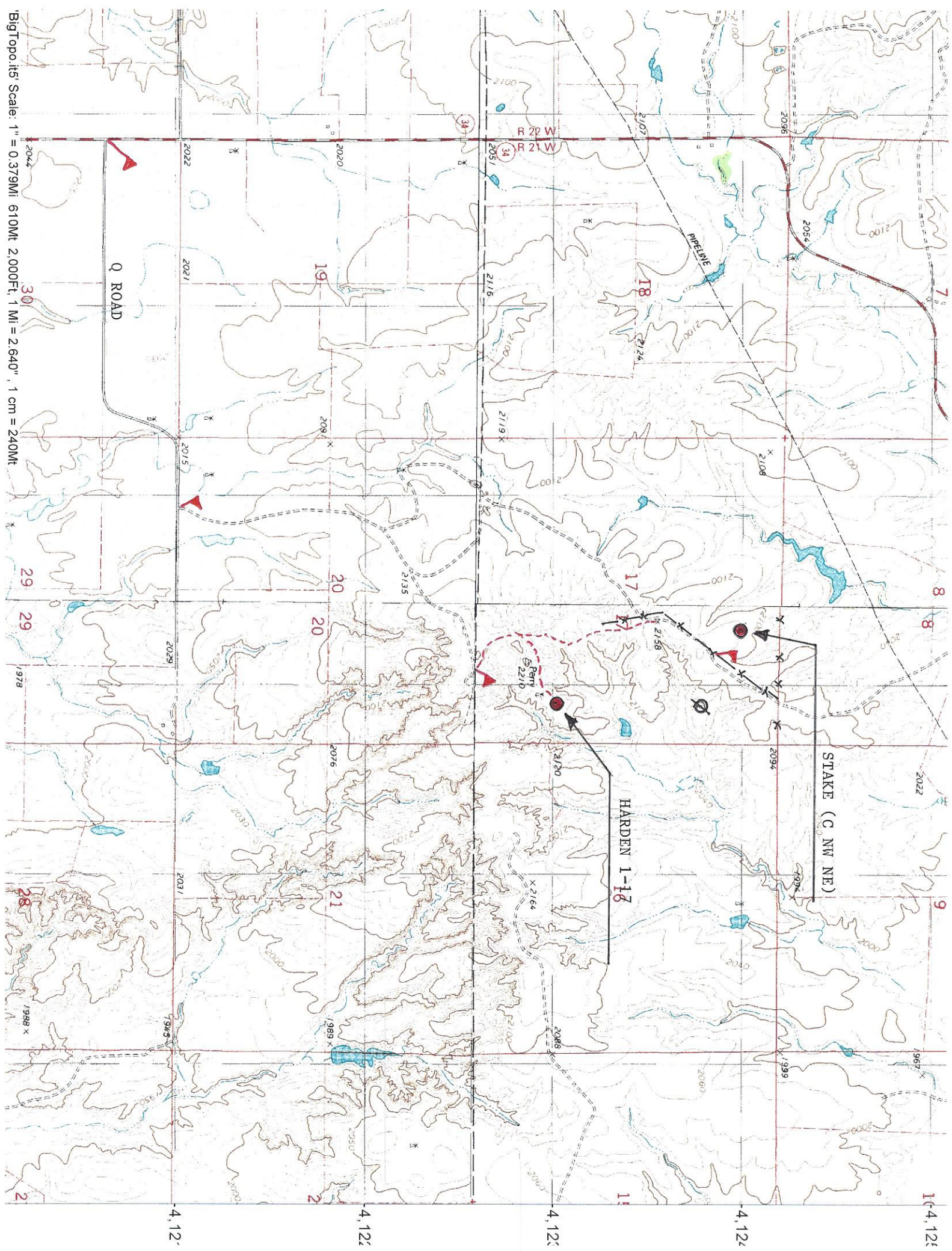
■ CORAL COAST PETROLEUM LC
8100 E 22nd St No
Bldg 600, Ste R
Wichita, KS 67226

AUTHORIZED BY: Daniel Reynolds



DATE STAKED: 12/13/13

BigTopo.it's Scale: 1" = 0.379Mi 610M, 2.000Ft, 1 Mi = 2.640", 1 cm = 240M



STAKE (C NW NE)

HARDEN 1-12

Q ROAD

PIPELINE

1-4, 12-12

