

OPERATOR

Company: TRANS PACIFIC OIL CORPORATION
Address: 100 S MAIN
SUITE 200
WICHITA, KS 67202
Contact Geologist: BETH A. ISERN
Contact Phone Nbr: (316) 262-3596
Well Name: HARPER 'B' UNIT #1-13
Location: N2 N2 N2 NW Sec. 13 - 17S - 27
Pool: API: 15-101-22476-00-00
State: KANSAS
Field: WILDCAT
Country: USA

Scale 1:240 Imperial

Well Name: HARPER 'B' UNIT #1-13
Surface Location: N2 N2 N2 NW Sec. 13 - 17S - 27
Bottom Location:
API: 15-101-22476-00-00
License Number: 6408
Spud Date: 11/19/2013
Region: LANE COUNTY, KANSAS
Drilling Completed: 11/25/2013
Surface Coordinates: 01' FNL & 1320' FWL
Bottom Hole Coordinates:
Ground Elevation: 2557.00ft
K.B. Elevation: 2566.00ft
Logged Interval: 3600.00ft
Total Depth: 4600.00ft
Formation: LANSING - KANSAS CITY
Drilling Fluid Type: FRESH WATER / CHEMICAL GEL

Time: 3:15 AM
Time: 2:24 PM
To: 4604.00ft

SURFACE CO-ORDINATES

Well Type: Vertical
Longitude: -100.2614327
N/S Co-ord: 01' FNL
E/W Co-ord: 1320' FWL
Latitude: 38.5814485

LOGGED BY

Company: SOLUTIONS CONSULTING, INC.
Address: 108 W 35TH
HAYS, KS 67601

Phone Nbr: (785)259-3737
Logged By: Geologist
Name: JEFF LAWLER

CONTRACTOR

Contractor: DUKE DRILLING COMPANY, INC.
Rig #: 4
Rig Type: MUD ROTARY
Spud Date: 11/19/2013
TD Date: 11/25/2013
Rig Release: 11/26/2013

Time: 3:15 AM
Time: 2:24 PM
Time: 12:00 PM

ELEVATIONS

K.B. Elevation: 2566.00ft
K.B. to Ground: 9.00ft
Ground Elevation: 2557.00ft

NOTES

THE HARPER 'B' UNIT #1-13 RAN STRUCTURALLY LOWER TO MOST WELLS IN THE AREA. THERE WAS SOME THICKENING THROUGH THE FT. SCOTT AND CHEROKEE SECTIONS. THE CHEROKEE SAND WAS RELATIVELY MATURE AND DEVELOPED BUT DID NOT CARRY ANY SHOWS OR STAIN. THE CONGLOMERATE





AFTER LOG ANALYSIS OPERATOR MADE THE DECISION TO PLUG AND ABANDON THE HARPER 'B' UNIT #1-13.

RESPECTFULLY SUBMITTED,
JEFF LAWLER

WELL COMPARISON SHEET

					H					H					P&A 6-84					●									
					VIKING RESOURCES					CHIEF DRILLING CO., INC.					D.R. LAUCK OIL CO., INC.					TRANS PACIFIC OIL CORP.									
					DOUGLAS #1 OWWO					HAGANS 'B' #1					JOHNSON 'A' #1					HANKS 'B' #1-14									
					HARPER 'B' UNIT #1-13					SW NW SW 13-17-27					E2 NW NE 14-17-27					N2 N2 NW 18-17-26					NE SW NE SE 14-17-27				
KB		2566		GL		2557		KB		2589		KB		2556		KB		2562		KB		2608							
LOG TOPS		SAMPLE TOPS		COMP. CARD		LOG		SMPL.		LOGS		LOG		SMPL.		COMP. CARD		LOG		SMPL.		LOGS		LOG		SMPL.			
FORMATION		DEPTH		DATUM		DEPTH		DATUM		CORR.		CORR.		DEPTH		DATUM		CORR.		CORR.		DEPTH		DATUM		CORR.		CORR.	
ANHYDRITE TOP		1970	596	1960	606	1986	603	-	7	+	3	1950	606	-	10	+	0	1949	613	-	17	-	7	2010	598	-	2	+	8
BASE		1993	573	1993	573							1982	574	-	1	-	1							2041	567	+	6	+	6
HEEBNER SHALE		3849	-1283	3844	-1278	3860	-1271	-	12	-	7	3814	-1258	-	25	-	20	3849	-1287	+	4	+	9	3875	-1267	-	16	-	11
TORONTO		3870	-1304	3864	-1298	3882	-1293	-	11	-	5	3834	-1278	-	26	-	20							3896	-1288	-	16	-	10
LANSING		3890	-1324	3878	-1312	3902	-1313	-	11	+	1	3850	-1294	-	30	-	18	3890	-1328	+	4	+	16	3913	-1305	-	19	-	7
MUNCIE CREEK		4045	-1479	4043	-1477							4010	-1454	-	25	-	23							4073	-1465	-	14	-	12
STARK SHALE		4143	-1577	4139	-1573							4113	-1557	-	20	-	16	4142	-1580	+	3	+	7	4169	-1561	-	16	-	12
BKC		4211	-1645	4207	-1641	4249	-1660	+	15	+	19	4188	-1632	-	13	-	9							4242	-1634	-	11	-	7
MARMOTON		4239	-1673	4235	-1669							4214	-1658	-	15	-	11	4257	-1695	+	22	+	26	4270	-1662	-	11	-	7
PAWNEE		4303	-1737	4303	-1737	4362	-1773	+	36	+	36	4281	-1725	-	12	-	12	4343	-1781	+	44	+	44						
FORT SCOTT		4403	-1837	4397	-1831	4413	-1824	-	13	-	7	4376	-1820	-	17	-	11	4406	-1844	+	7	+	13	4428	-1820	-	17	-	11
CHEROKEE SHALE		4429	-1863	4423	-1857	4436	-1847	-	16	-	10	4399	-1843	-	20	-	14	4431	-1869	+	6	+	12	4453	-1845	-	18	-	12
CHEROKEE SAND		4506	-1940	4496	-1930							4472	-1916	-	24	-	14	4500	-1938	-	2	+	8						
CONGL. CHERT		4490	-1924	4489	-1923													4514	-1952	+	28	+	29						
MISSISSIPPIAN		4552	-1986			4508	-1919	-	67			4504	-1948	-	38			4529	-1967	-	19			4534	-1926	-	60		
TOTAL DEPTH		4604	-2038	4600	-2034	4580	-1991	-	47	-	43	4550	-1994	-	44	-	40	4585	-2023	-	15	-	11	4534	-1926	-	112	-	108

ROCK TYPES

 Cht
  Lmst fw7>
  Carbon Sh
  Shcol
 Cht vari
 shale, grn
 Shblk
 Lscong1
 Dolprim
 shale, gry
 shale, red

ACCESSORIES

MINERAL	FOSSIL	STRINGER
• Sandy	◊ Oolite	~~~~ Chert
	◊ Oomoldic	

OTHER SYMBOLS

DST

 DST Int

 DST alt

Printed by GEOstrip VC Striplog version 4.0.7.0 (www.grsi.ca)

Well Log Data - Well ID: W-101							
Curve Track #1		Depth Intervals	DST	Lithology	Oil Show	Geological Descriptions	Curve Track #3
ROP (min/ft)							Cored Interval
0	ROP (min/ft)	5					1:240 Imperial
0	Gamma (API)	150					
6	Cal (in)	16					
		3500					
1' DRILL TIME THROUGH ANHYDRITE FROM 1925' - 2025'							

1' DRILL TIME FROM 3500' - RTD
10' WET/DRY SAMPLES FROM 3700' - RTD

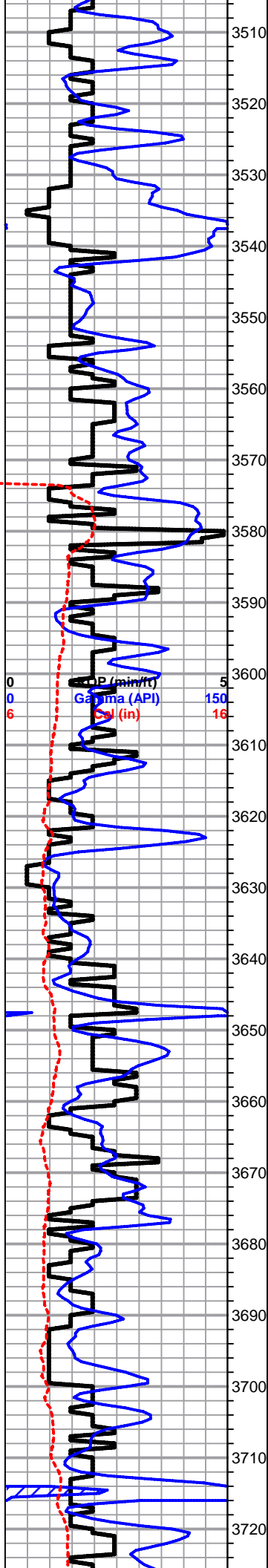
GEOLOGICAL SUPERVISION BY JEFF LAWLER FROM 3600' - RTD

8 5/8" SURFACE PIPE SET @ 224' SURVEY 3/4 dgr.

ANHYDRITE TOP 1960' (+606) E-LOG 1971' (+595)
BASE 1993' (+573) E-LOG 1994' (+572)

SURVEY

224'	3/4
1004'	0
1501'	1/2
1997'	3/4
2499'	3/4
2998'	3/4
4600'	3/4



Sh- Black Maroon Lm Green, dense, well compacted, carbonaceous, sl sandy, silty & calcareous

Lm- Cream Tan, Vf-Fn Grn, chalky mud supported matrix, loosely cemented, soft, mottled, few pcs of arenaceous FXLN ls w/ fn ppt porosity, barren

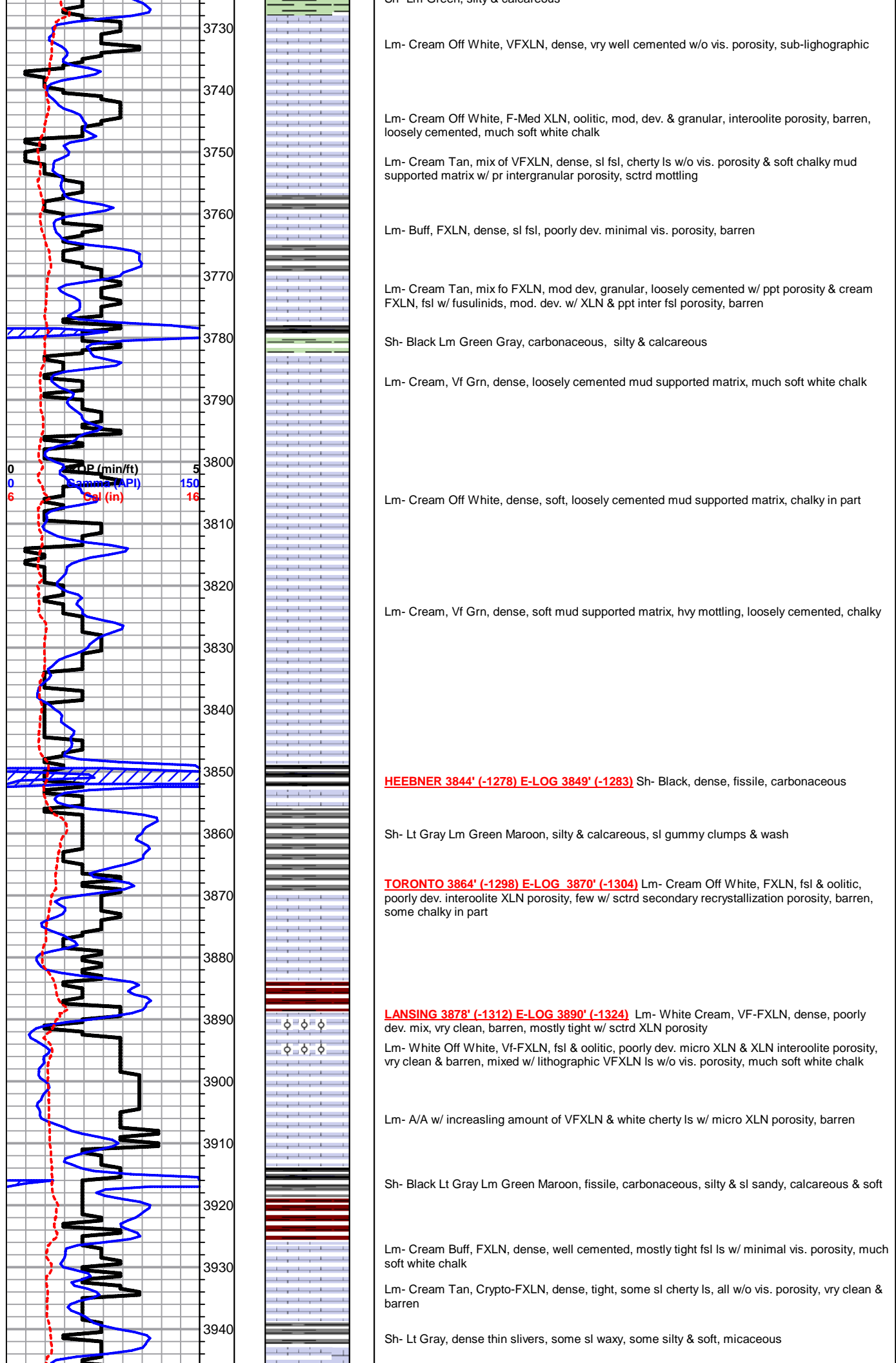
Lm- Cream Tan, Fn Grn, fsl, sl granular, chalky mud supported matrix, mod. dev. w/ fn intergranular porosity, barren, hvy mottling

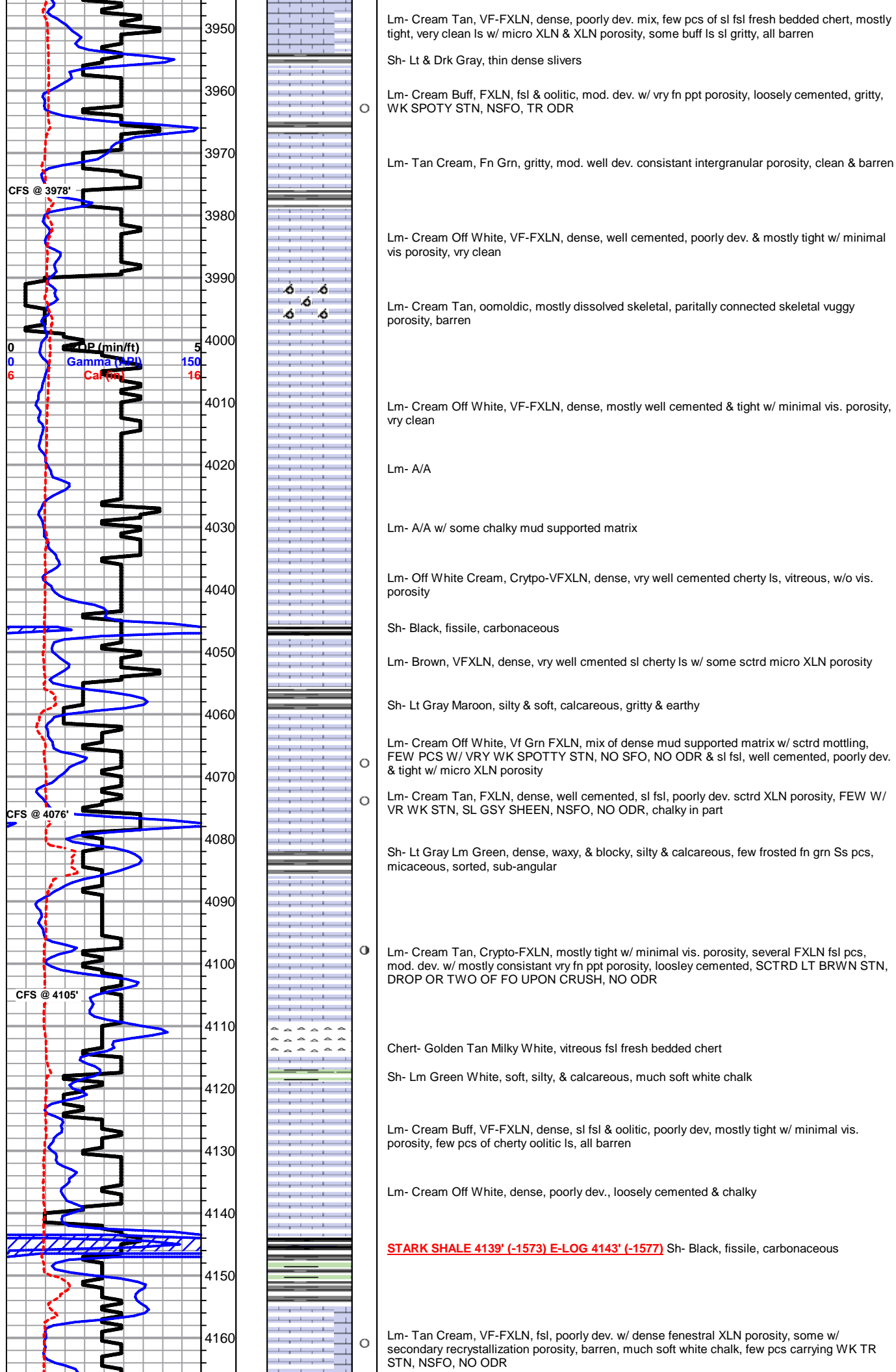
Lt Gray, gummy argillaceous clumps

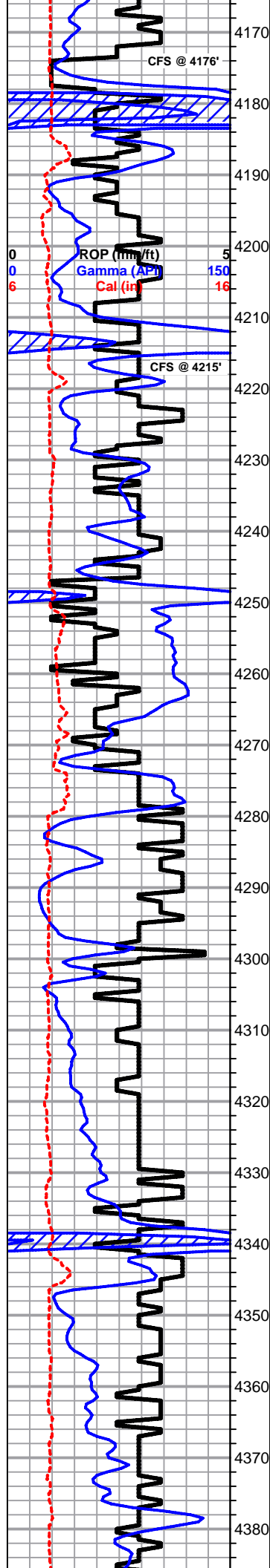
Lm- Cream Tan, mix of FXLN, gritty & granular, mod dev. w/ XLN porosity, tan VFXLN, dense, vry well cemented, tight w/ minimal vis. porosity, all w/ sctrd mottling

Sh- Black Maroon, fissile, carbonaceous, gritty & earthy

Sh- Lm Green, silty & calcareous







Lm- Buff, FXLN, dense, fsl, poorly dev. well cemented, sctrd XLN porosity, fresh bedded chert & cherty ls

Sh- Black, fissile, dense, carbonaceous

Sh- Lt Gray Maroon Lm Green, silty & calcareous, some wash, gritty & earthy, much soft white chalk

Lm- Cream Off White, Vf Grn FXLN, mix of fsl well cemented, poorly dev. FXLN, dense w/ micro XLN porositiy, & soft mud supported matrix, most loosely cemented, tight w/ minimal vis. intergranular porosity, chalky

Lm- Cream Off White, FXLN, dense, fsl, well cemented & poorly dev. w/ XLN porosity, barren

BKC 4207' (-1641) E-LOG 4211' (-1645) Sh- Black, fissile, carbonaceous, some black wash

Sh- Lm Green Lt Gray, waxy & dense, silty, sl pebbley

Lm- Cream Off White, VF-FXLN, dense, loosely cemented, sl grainy, sctrd to dense XLN porosity, barren

Sh- Lm Green Gray, soft, vry silty, calcareous

MARMATON 4235' (-1669) E-LOG 4239' (-1673) Lm- Cream Off White, VF-FXLN, dense tight mix, some well cemented w/ micro XLN porosity & sctrd crystallization secondary porosity, & dense mud supported matrix, loosely cemented, all vry clean & barren

Sh- Lm Green Gray, waxy, crumbly, pebbley, gummy argillaceous clumps

Sh- Mustard Yellow White, gummy argillaceous clumps

Lm- Mustard Yellow, unconsolidated weathered & reworked appearance, XLN porosity, barren, trashy

Sh- Maroon, wash & gummy argillaceous clumps, some sandy lime

Lm- Cream Off White, VF-FXLN, dense, loosely cemented, poorly dev. & mostly tight w/ micro XLN porosity

Lm- Cream Off White, VF-FXLN Vf Grn, dense tight mix, all poorly dev., FXLN well cemented w/ micro XLN porosity, & mud supported matrix soft, loosely cemented & chalky, all vry clean

PAWNEE 4303' (-1737) E-LOG 4303' (-1737) Lm- Cream Off White, FXLN, dense, vry well cemented, mostly tight w/ micro XLN porosity, some chalky mud supported matrix, vry clean

Lm- Buff, VF-FXLN Vf Grn, dense tight mix, all vry well cemented, poor vis. porosity

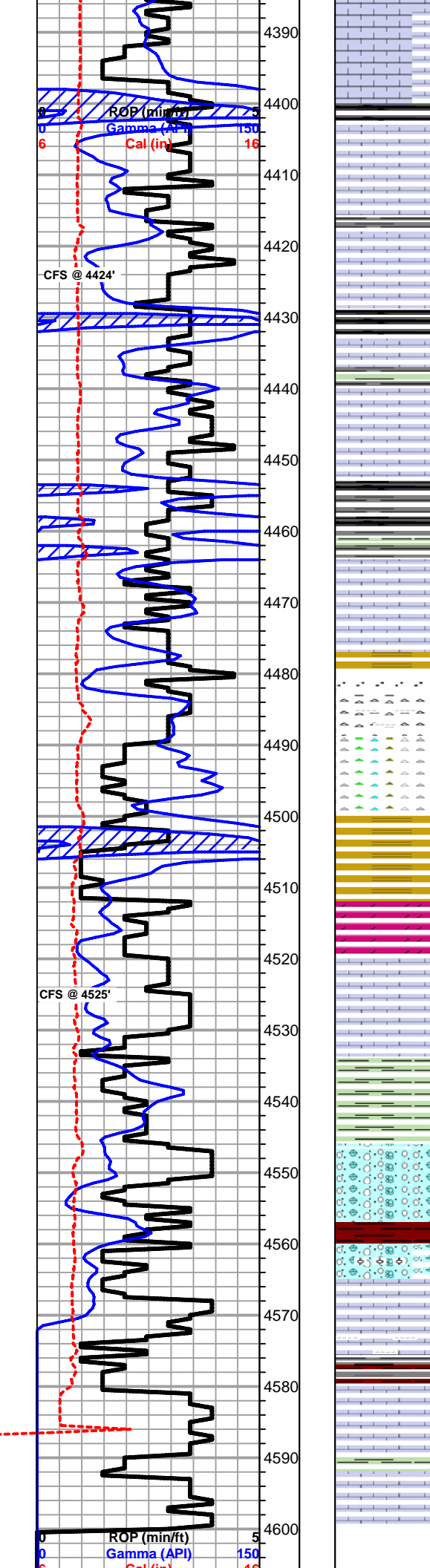
Sh- Black Lt Gray, fissile, carbonaceous, silty, calcareous

Lm- Buff, VF-FXLN Vf Grn, dense tight mix, poorly dev. some mud supported matrix, all w/ minimal vis. porosity

Lm- Cream Off White, Vf-Fn Grn, dense mud supported matrix, chakly in part, poor vis. porosity

Sh- Black Drk Gray, vry silty, soft, calcareous

Lm- White Off White, dense, soft, mud supported matrix, chalky in part



Sh- Black, dense, vry well compacted, near lithofied, carbonaceous

FT SCOTT 4397' (-1831) E-LOG 4403' (-1837) Lm- Cream Tan, FXLN, dense, loosely cemented, sl fsl, poorly dev. & mostly tight w/ dense XLN porosity, some w/ small pyrite veins, barren, some chalky in part

Lm- A/A, increasing amount of tan, VFXLN, dense, vry well cemented, oolitic biomicrite w/ sctrd micro XLN porosity



Lm- Buff, FXLN, dense, well cemented, mostly tight, some w/ sctrd vry fn ppt porosity, VRY SCTRD LT BRWN STN, SL FLAKEY, SL TR SFO UPON CRUSH, NO ODR, LT YLW FLOR & SLW STRM WET CUT

CHEROKEE SHALE 4423' (-1857) E-LOG 4429' (-1863) Sh- Black, fissile, carbonaceous

Lm- Cream Off White, VF-FXLN Vf Grn, dense tight mix, well cemented, sub-lithographic w/ minimal vis. porosity & chalky mud supported matrix, all vry clean

Lm- Cream Tan, VF-FXLN, dense, most all well cemented, sctrd micro XLN & XLN porosity, barren

Lm- Tan, VFXLN, dense, vry well cemented, tight cherty ls w/o vis. porosity

Lm- Cream Off White, Vf Grn, dense, chalky mud supported matrix, poor vis. porosity

Sh- Purple, crumbly waxy Ss- Clear to Semi-Frosted, Fn-Med Grn, mix of consolidated, poorly sorted, mature, vry friable, clean & unconsolidated and shaley, friable, poorly sorted, sub-angular, barren

Cherty Conglomerate- Mustard Ylw Salmon White, some gritty dolomitic chert, most bedded chert Ss- A/A w/ mint green tint, vry friable and clean, mature & poorly sorted

Conglomerate Chert- Mustard Drk Maroon, trashy reworked chert, some fsl

Dol- Buff, VFXLN, dense, vry well cemented, tight w/ minimal vis. porosity, clean & barren, much soft white chalk

Lm- Cream Off White, FXLN, sl fsl, well cemented, sctrd-dense XLN porosity, clean & barren

Lm- Cream Off White, Vf-Fn Grn, dense, sl oolitic, loosely-well cemented mud supported matrix w/ poor intergranular porosity, much soft white chalk, barren

Sh- Lt Gray Pea Green Maroon White, gritty, conglomerate, massive, some sl pebbly, trashy, much soft white chalk

MISSISSIPPIAN E-LOG 4551' (-1985) Lm Conglomerate- Cream w/ Maroon Tint, FXLN, reworked, loosely cemented, sl oolitic, XLN porosity, barren

Lm- Cream, A/A w/ trashy pebbly shale lenses, much soft white chalk

Lm- Cream, A/A, oolitic, clean cherty ls

Lm- Cream, FXLN, dense, vry well cemented, sl dolomitic ls w/ poor XLN porosity, barren, several pcs of white fresh bedded chert

Lm- Cream Off White, VF-FXLN, dense, tight, vry well cemented, tight w/ micro XLN porosity, poorly dev., clean

Sh- Gray Maroon Mint Green, silty, gritty & earthy, mint green sh w/ rounded qtz inclusions & pyrite

Lm- Cream Off White, FXLN, dense tight cherty ls w/ XLN porosity, sl oolitic, barren

RTD 4600' (-2034) LTD 4604' (-2038) @ 14:24 11/25/2013

Ca (mg/L)

Time (h)

4610