

AUSTIN B. KLAUS



Cell 785.650.3629
Work 785.483.3145
Ext 225

PO BOX 352
Russell, KS 67665
austin.klaus@johnofarmer.com

Scale 1:240 (5"=100') Imperial
Measured Depth Log

Well Name: Potter K #1
Location: Ness County
License Number: API #15-135-25665-00-00
Spud Date: 9/18/13
Surface Coordinates: Section 25 - Township 17 South - Range 25 West
1,570' FNL & 330' FWL
Bottom Hole Coordinates: Vertical well with minimal deviation, same as above
Ground Elevation (ft): 2,484' **K.B. Elevation (ft):** 2,492'
Logged Interval (ft): 3700' **To:** RTD **Total Depth (ft):** 4510'
Formation: Mississippian
Type of Drilling Fluid: Chemical (Andy's)

Region: Kansas
Drilling Completed: 9/25/13

Printed by STRIP.LOG from WellSight Systems 1-800-447-1534 www.WellSight.com

OPERATOR

Company: John O. Farmer, Inc.
Address: P.O. Box 352
Russell, KS 67665-0352

Comments

The Potter K #1 well was drilled by Discovery Drilling Rig #3 (Tool Pusher: Galen Gaschler).

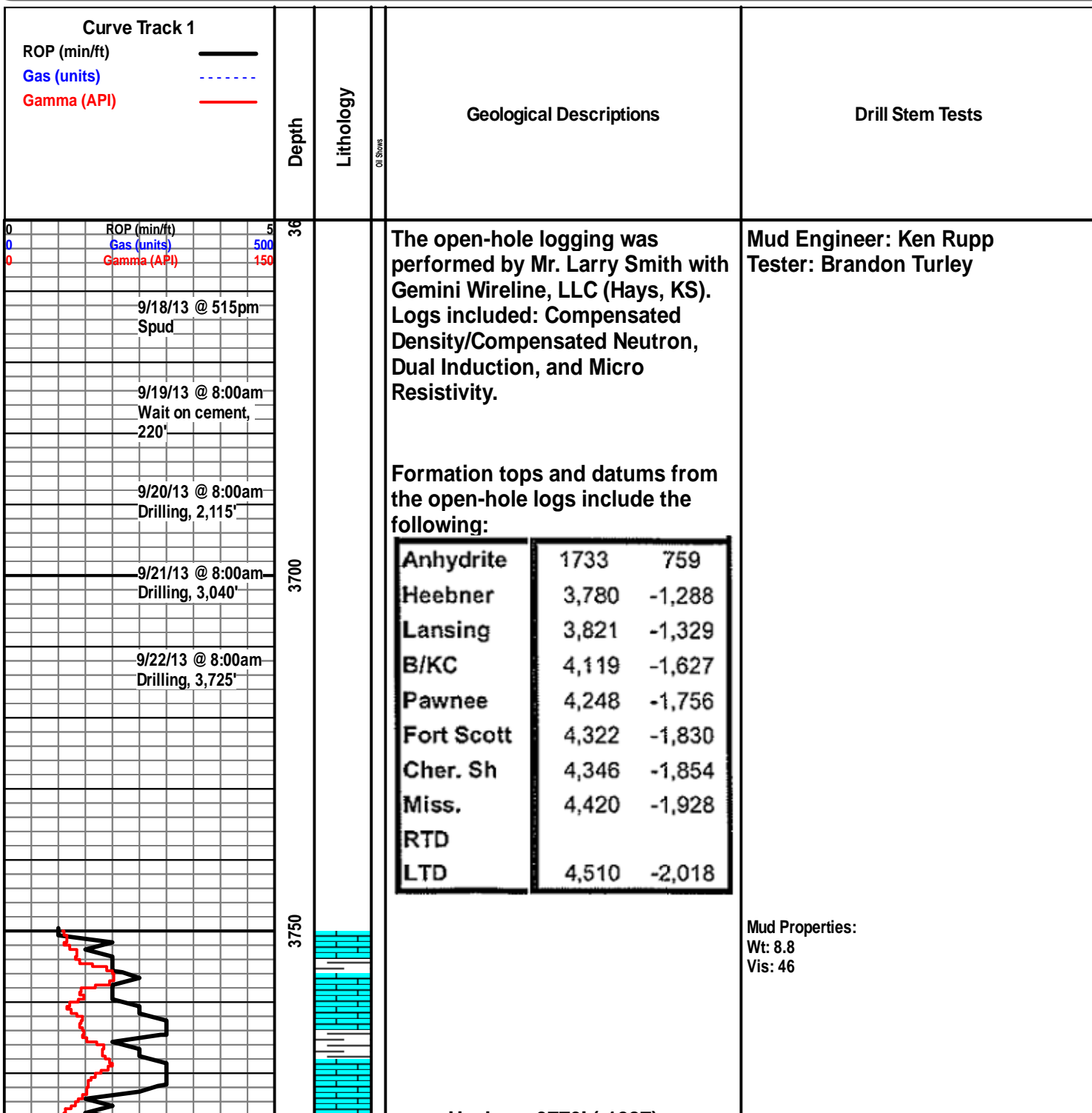
The location for the Potter K #1 well was found via 3-D seismic survey. Geologic samples were collected and examined from 3,750-4,510'. Upon examination of rock samples in the Fort Scott it was decided a bottom-hole test be conducted; this test yielded negative results. After log data was aquired and analyzed one straddle test was conducted on the Mississippian formation. After all sample, log, and drill stem test data was gathered and evaluated, the decision was made to run 5 1/2" production casing to further evaluate the Potter K #1 well on 9/26/13.

ROCK TYPES

Anhy	Clyst	Gyp	Mrlst	Shgy
Bent	Coal	Igne	Salt	Slstst
Brec	Congl	Lmst	Shale	Ss
Cht	Dol	Meta	Shcol	Till

OTHER SYMBOLS

POROSITY	<input checked="" type="checkbox"/> Vuggy	ROUNDING	<input type="checkbox"/> Spotted	EVENT
<input type="checkbox"/> Earthy	SORTING	<input type="checkbox"/> Rounded	<input type="checkbox"/> Ques	<input type="checkbox"/> Rft
<input type="checkbox"/> Fenest	<input type="checkbox"/> Well	<input type="checkbox"/> Subrnd	<input type="checkbox"/> Dead	<input type="checkbox"/> Sidewall
<input type="checkbox"/> Fracture	<input type="checkbox"/> Moderate	<input type="checkbox"/> Subang	INTERVAL	
<input type="checkbox"/> Inter	<input type="checkbox"/> Poor	<input type="checkbox"/> Angular	<input type="checkbox"/> Core	
<input type="checkbox"/> Moldic		OIL SHOW	<input type="checkbox"/> Dst	
<input type="checkbox"/> Organic		<input type="checkbox"/> Even		
<input type="checkbox"/> Pinpoint				



Heebner 3779' (-1287)

Sh: drk gry-blk, carb

Ls: off wh-lt gry, fn-sub xln, mostly DNS

Sh: gry-brn

Ls: lt gry-tan-brn, fn-sub xln, mostly DNS, sl fossil

Sh: lt-drk gry

Lansing 3821' (-1329)

Ls: crm-brn -gry, fn-vry fn xln, mostly DNS, hard, sl chalky, sl fossil, NSFO

Ls: ala

Sh: gry-drk gry

Ls: off wh-tan-brn, vry fn-fn xln, mostly DNS, occ, fossil, sl chert-off wh, sl chalky NSFO, no odor

Ls: ala

Ls: crm-tan, fn-sub xln, mostly DNS, chert-off wh, sl fossil, NSFO

Sh: lt-drk gry-brn

Ls: ala

Ls: tan-lt gry, fn-vry fn xln, sl chalky, mostly DNS, trace chert-off wh, sl fossil, NSFO, no odor

Sh: drk gry

Ls: off wh-crm-lt gry, fn-vry fn xln, occ, ool w/ fair oom porosity, sl chalky, vry lt oil st in porosity, NSFO

Ls: ala

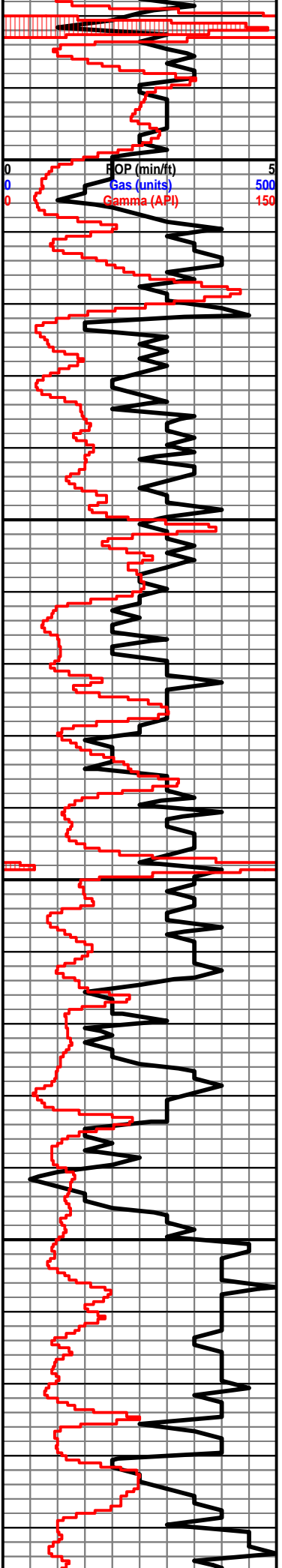
Sh: drk gry-grn, soft

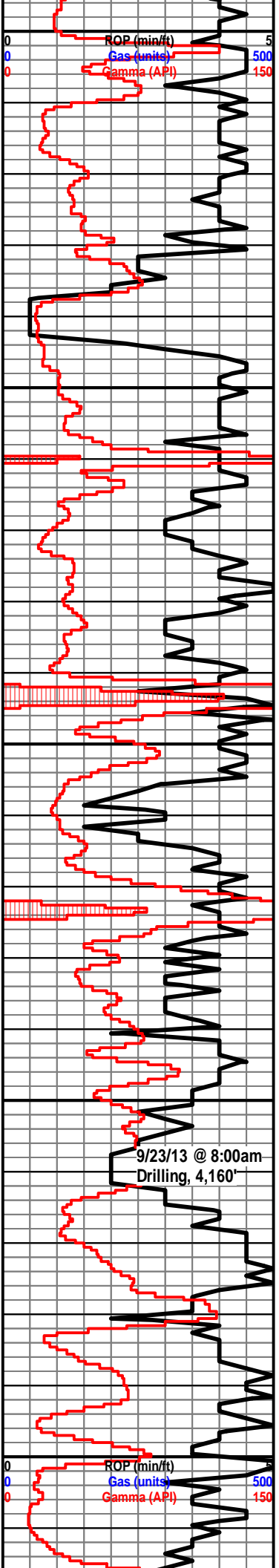
Ls: off wh-tan-lt gry, fn-sub xln, mostly DNS, vry hard, no porosity, NSFO

Ls: ala

Sh: drk gry-grn-brn

Ls: off wh-tan-gry, mostly DNS, vry hard, sl fossil, chalky, no porosity, NSFO





Sh: lt-drk gry

Ls: tan-lt gry, fn-vry fn xln, vry poor int xln porosity, lt oil st in porosity, NSFO, sl chert-off wh, sl chalky

Sh: lt-drk gry, mostly hard, DNS

Ls: off wh-tan-lt gry, fn xln, ool, w/ fair-good oom porosity, mostly barren, NSFO, sl chalky

Sh: lt-drk gry, few pcs soft

Ls: off wh-tan-crm, fn-vry fn xln, poor int xln porosity, mostly barren, NSFO, sl chalky, sl chert-off wh

Ls: ala

Sh: drk gry-blk, carb, fissile

Ls: crm-lt gry, fn-sub xln, mostly DNS, sl chert-off wh-tan

Ls: ala

B/KC 4118' (-1626)

Sh: drk gry-brn, few pcs blk carb

Ls: off wh-tan-lt gry, fn-sub xln, mostly DNS, vry hrd, sl fossil, NSFO

Sh: drk gry-brn-grn, few pcs soft

Sh: lt-drk gry-brn, soft

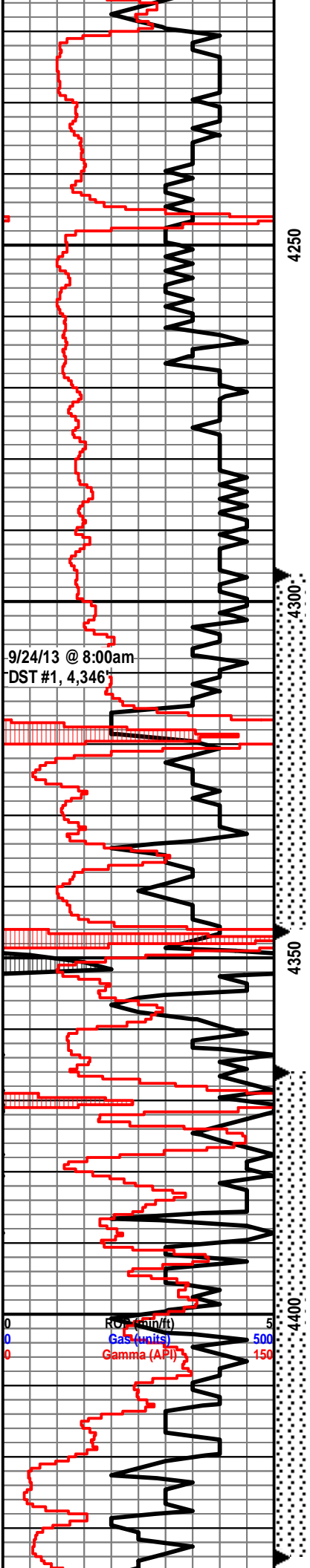
Ls: off wh-tan-lt gry, fn-sub xln, mostly DNS, sl fossil, chalky, NSFO

Ls: ala

Sh: lt-drk gry, mostly hard, DNS

Ls: off wh-tan-lt gry, fn-sub xln, mostly DNS, sl chalky, NSFO, no odor

Mud Properties:
Wt: 9.3
Vis: 56



Ls: ala

Ls: off wh-tan-lt gry, fn-vry fn xln, sl chalky, sl chert-off wh, NSFO, no odor

Pawnee 4241' (1749)

Ls: off wh-tan-gry, fn-sub xln, vry DNS, sl chalky, NSFO

Ls: ala

Sh: drk gry-brn-lt grn

Ls: off wh-lt gry, fn-sub xln, mostly DNS, vry hard, sl chert-off wh, sl fossil, NSFO

Sh: lt-drk gry-brn-grn

Sh: lt-drk gry-brn-grn

Sh: drk gry-brn-grn-maroon, few pcs soft

Sh: drk gry-blk, carb

Fort Scott 4322 (-1830)

Ls: off wh-tan, vry fn-fn xln, poor-fair int xln porosity, vry lt oil st, sl odor, VSSFO

Ls: ala

Sh: drk gry

Ls: tan-lt gry, fn-sub xln, mostly DNS, NSFO, no odor, sl fossil

Cherokee Sh 4347' (-1855)

Sh: drk gry-blk, carb

Sh: drk gry-brn

Ls: tan-lt gry, fn-sub xln, mostly DNS, sl fossil, NSFO, no odor

Sh: lt-drk gry

Ls: off wh-brn, fn xln, vry hard, sl fossil, chalky

Ls: ala

Sh: gry-brn-grn

Ls: off wh-lt gry, fn-sub xln, mostly DNS, sl chert-off wh, pyrite

Sh: drk gry-brn, Cong: chert-off wh

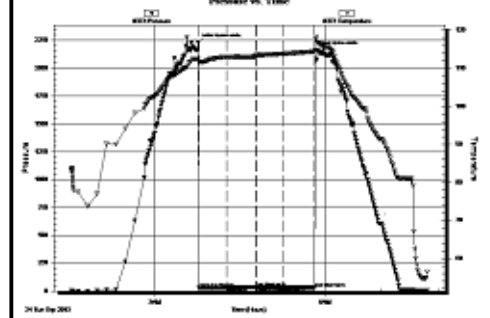
Mississippian 4428' (-1936)

Dolo: off wh-brn, fn-vry fn xln, poor-fair int xln porosity, fair oil st, SSFO, sl-fair odor, poor-fair yel fluor, chert-off wh

Mud Properties:
Wt: 9.3
Vis: 50

DST #1 4,296-4,346' Fort Scott
30"-30"-30"-30"

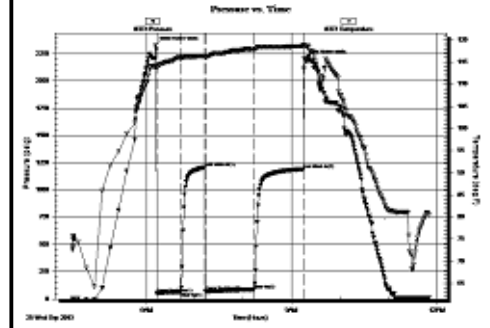
IF: Surface blow died in 9 minutes
FF: no blow
Rec: 5' Mud with oil spots
FP: 27-29, 29-29#
SIP: 33-30#
HP: 2,230-2,163#
BHT: 118

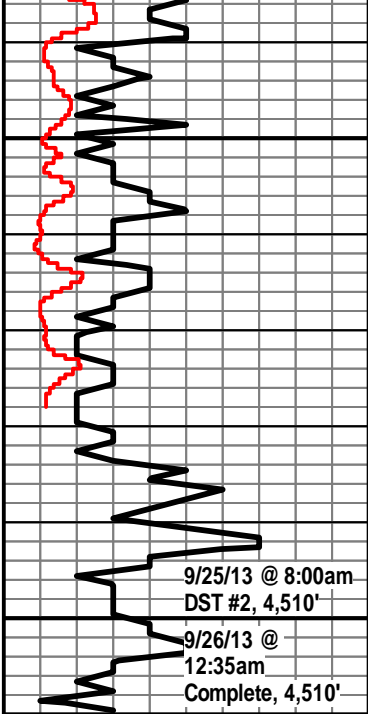


Survey:
1 degree deviation

DST #2 4,366-4,434' Top 14' of Miss
30"-30"-60"-60"

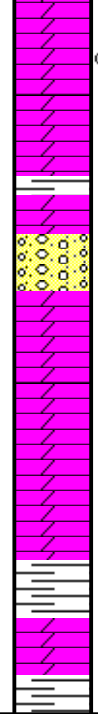
IF: weak blow built to 5.5"
FF: weak blow built to 8"
Rec: 62' GIP, 20' CO, 62' HOCGM (10% G, 30% O, 60% M)
FP: 52-64, 71-86#
SIP: 1,207-1,191#
HP: 2,325-2,202#
BHT: 118





4450

4500



Dolo: off wh-tan-brn, fn xln, poor-fair int xln porosity, vry lt oil st, VSSFO, sl odor, hvy chert-off wh, sl fossil

Sh: drk gry-brn-grn

Cong: chert-off wh-lt yellow

Dolo: off wh-tan-brn, fn-vry fn xln, poor int xln porosity, NSFO, no odor, sl fossil, hvy chert-off wh

Dolo: ala

Sh: drk gry-brn-grn