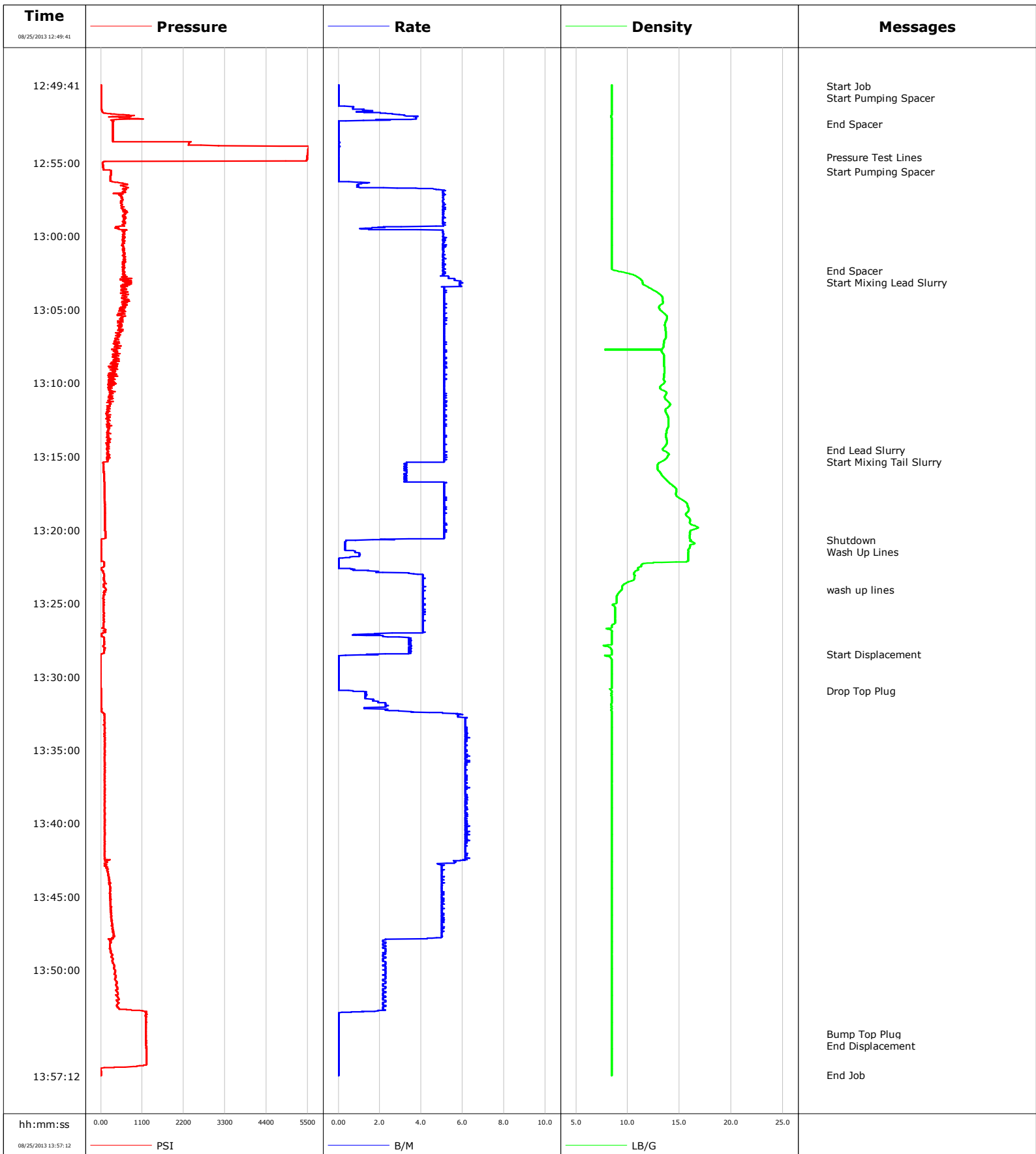


Well	College SW 3202-1-4	Client	Sandridge
Field	Osborn	SIR No.	CDL7-338
Engineer	Charles Jacobs	Job Type	5.5" Production
Country	United States	Job Date	08-25-2013



Customer Sandridge				Job Number 1019373						
Well College SW3202-1-4			Location (legal)			Schlumberger Location Elreno		Job Start Aug/25/2013		
Field Osborn		Formation Name/Type		Deviation		Bit Size		Well MD		Well TVD
County Sumner		State/Province KS		BHP		BHST		BHCT		Pore Press. Gradient
Well Master 0631486364		API/UWI 1519122700								
Rig Name Horison #5		Drilled For Oil & Gas		Service Via Land		Casing/Liner				
						Depth,	Size,	Weight,	Grade	Thread
Offshore Zone		Well Class New		Well Type Development						
Drilling Fluid Type		Max. Density		Plastic Viscosity		Tubing/Drill Pipe				
						Depth,	Size,	Weight,	Grade	Thread
Service Line Cementing		Job Type Cem Prod Casing								
Max. Allowed Tub. Press		Max. Allowed Ann. Press		WH Connection		Perforations/Open Hole				
						Top,	Bottom,		No. of Shots	Total Interval
Service Instructions										Diameter
						Treat Down		Displacement		Packer Type
Tubing Vol.		Casing Vol.		Annular Vol.		Openhole Vol.				
Casing/Tubing Secured <input type="checkbox"/>		1 Hole Vol. Circulated prior to Cement <input checked="" type="checkbox"/>		Casing Tools			Squeeze Job			
Lift Pressure 490 psi		Shoe Type Guide		Squeeze Type						
Pipe Rotated <input type="checkbox"/>		Pipe Reciprocated <input type="checkbox"/>		Shoe Depth 4506.0 ft		Tool Type				
No. Centralizers 5		Top Plugs 1		Bottom Plugs 0		Stage Tool Type			Tool Depth	
Cement Head Type Single		Stage Tool Depth		Tail Pipe Size						
Job Scheduled For Aug/25/2013		Arrived on Location Aug/25/2013		Leave Location Aug/25/2013		Collar Type Float			Tail Pipe Depth	
						Collar Depth 4334.9 ft			Sqz. Total Vol.	
Date	Time 24-hr clock	Treating Pressure PSI	Flow Rate B/M	Density LB/G	Volume BBL	Message				
08/25/2013	12:49:41	2	0.0	8.44	0.0					
08/25/2013	12:49:47					Start Job				
08/25/2013	12:49:47	2	0.0	8.44	0.0					
08/25/2013	12:49:49					Start Pumping Spacer				
08/25/2013	12:49:49	1	0.0	8.44	0.0					
08/25/2013	12:51:51	805	3.9	8.43	1.2					
08/25/2013	12:52:20					End Spacer				
08/25/2013	12:52:20	319	0.0	8.44	2.1					
08/25/2013	12:54:01	5520	0.0	8.44	2.1					
08/25/2013	12:54:36					Pressure Test Lines				
08/25/2013	12:54:36	5479	0.0	8.44	2.1					
08/25/2013	12:55:36					Start Pumping Spacer				
08/25/2013	12:55:36	266	0.0	8.44	2.1					
08/25/2013	12:56:11	259	0.0	8.44	2.1					
08/25/2013	12:58:21	680	5.1	8.45	10.8					
08/25/2013	13:00:31	570	5.1	8.44	21.0					
08/25/2013	13:02:18					End Spacer				
08/25/2013	13:02:18	583	5.1	8.64	30.1					
08/25/2013	13:02:23					Start Mixing Lead Slurry				
08/25/2013	13:02:23	620	5.1	9.03	30.5					
08/25/2013	13:02:41	632	5.1	10.70	32.0					

Well		Field		Job Start	Customer	Job Number
College SW3202-1-4		Osborn		Aug/25/2013	Sandridge	1019373
Date	Time 24-hr clock	Treating Pressure PSI	Flow Rate B/M	Density LB/G	Volume BBL	Message
08/25/2013	13:07:01	442	5.1	13.62	54.6	
08/25/2013	13:09:11	327	5.1	13.54	65.7	
08/25/2013	13:11:21	246	5.1	14.01	76.8	
08/25/2013	13:13:31	198	5.1	13.71	87.8	
08/25/2013	13:14:34					End Lead Slurry
08/25/2013	13:14:34	194	5.1	13.42	93.2	
08/25/2013	13:14:52					Start Mixing Tail Slurry
08/25/2013	13:14:52	170	5.1	13.98	94.7	
08/25/2013	13:15:41	69	3.2	12.88	98.4	
08/25/2013	13:17:51	104	5.1	15.00	107.5	
08/25/2013	13:20:01	113	5.2	16.25	118.6	
08/25/2013	13:20:40					Shutdown
08/25/2013	13:20:40	2	2.7	16.08	121.8	
08/25/2013	13:20:53					Wash Up Lines
08/25/2013	13:20:53	5	0.3	16.42	121.9	
08/25/2013	13:22:11	84	0.0	15.69	122.5	
08/25/2013	13:24:05					wash up lines
08/25/2013	13:24:05	134	4.1	9.43	127.5	
08/25/2013	13:24:21	82	4.1	9.07	128.6	
08/25/2013	13:26:31	67	4.1	8.48	137.5	
08/25/2013	13:28:27					Start Displacement
08/25/2013	13:28:27	45	3.4	8.44	144.0	
08/25/2013	13:28:41	-5	0.0	8.31	144.2	
08/25/2013	13:30:51	0	0.0	8.28	144.2	
08/25/2013	13:30:57					Drop Top Plug
08/25/2013	13:30:57	16	0.5	8.43	144.2	
08/25/2013	13:33:01	107	6.1	8.44	150.2	
08/25/2013	13:35:11	108	6.1	8.44	163.6	
08/25/2013	13:37:21	106	6.1	8.45	176.9	
08/25/2013	13:39:31	103	6.2	8.45	190.2	
08/25/2013	13:41:41	105	6.1	8.45	203.6	
08/25/2013	13:43:51	237	5.1	8.45	215.5	
08/25/2013	13:46:01	271	5.0	8.45	226.3	
08/25/2013	13:48:11	260	2.3	8.45	236.3	
08/25/2013	13:50:21	393	2.2	8.45	241.1	
08/25/2013	13:52:31	448	2.2	8.45	245.9	
08/25/2013	13:54:20					Bump Top Plug
08/25/2013	13:54:20	1198	0.0	8.45	246.6	
08/25/2013	13:54:22					End Displacement
08/25/2013	13:54:22	1197	0.0	8.45	246.6	
08/25/2013	13:54:41	1203	0.0	8.45	246.6	
08/25/2013	13:56:51	0	0.0	8.45	246.6	
08/25/2013	13:57:08					End Job

Well College SW3202-1-4	Field Osborn	Job Start Aug/25/2013	Customer Sandridge	Job Number 1019373
-----------------------------------	------------------------	---------------------------------	------------------------------	------------------------------

Post Job Summary

Average Pump Rates, bbl/min					Volume of Fluid Injected, bbl			
Slurry 5.0	N2	Mud	Maximum Rate 6.0	Total Slurry 84.0	Mud 0.0	Spacer 30.0	N2	
Treating Pressure Summary, psi					Breakdown Fluid			
Maximum 1500	Final 0	Average	Bump Plug to 1207	Breakdown	Type	Volume	Density	
Avg. N2 Percent	Designed Slurry Volume	Displacement 102.0 bbl	Mix Water Temp	Cement Circulated to Surface? <input type="checkbox"/>	Volume			
				Washed Thru Perfs <input type="checkbox"/>	To			
Customer or Authorized Representative Edwin Miller			Schlumberger Supervisor Charles Jacobs		Circulation Lost <input type="checkbox"/>	Job Completed <input checked="" type="checkbox"/>		
					-	-		