



DRILL STEM TEST REPORT

CAPTIVA ENERGY L.L.C
 2717 CANAL BLVD SUITE C
 HAYS KS 67601
 ATTN: KEITH REAVIS

MEIGS TRUST 1-5

5-29-13

Job Ticket: 16400

DST#: 3

Test Start: 2009.06.01 @ 01:12:49

GENERAL INFORMATION:

Formation: **SIMPSON SANDS**
 Deviated: No Whipstock: ft (KB)
 Time Tool Opened: 03:44:19
 Time Test Ended: 09:36:49
 Interval: **4516.00 ft (KB) To 4565.00 ft (KB) (TVD)**
 Total Depth: 4565.00 ft (KB) (TVD)
 Hole Diameter: 7.88 inches Hole Condition: Fair
 Test Type: Conventional Bottom Hole (Initial)
 Tester: DAVID NICHOLS
 Unit No: 3345 114 M GB
 Reference Elevations: 1968.00 ft (KB)
 1956.00 ft (CF)
 KB to GR/CF: 12.00 ft

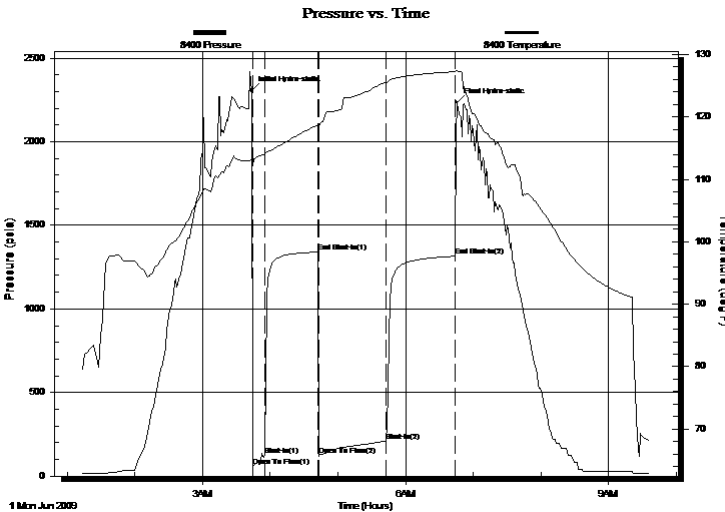
Serial #: 8400

Inside

Press@RunDepth: 209.38 psia @ 4560.00 ft (KB) Capacity: 5000.00 psia
 Start Date: 2009.06.01 End Date: 2009.06.01 Last Calib.: 2009.06.01
 Start Time: 01:12:49 End Time: 09:36:49 Time On Btm: 2009.06.01 @ 03:43:19
 Time Off Btm: 2009.06.01 @ 06:45:19

TEST COMMENT: 10-INITIAL OPENING WEAK BLOW BUILT TO 3 INCHES INTO WATER
 45-INITIAL SHUT IN NO BLOW BACK
 60-FINAL OPENING WEAK BLOW BUILT TO BOTTOM OF THE BUCKET IN 55 MINS
 60-FINAL SHUT IN NO BLOW BACK

PRESSURE SUMMARY



Time (Min.)	Pressure (psia)	Temp (deg F)	Annotation
0	2305.13	113.24	Initial Hydro-static
1	58.11	112.22	Open To Flow (1)
12	125.32	113.96	Shut-In(1)
59	1339.79	118.65	End Shut-In(1)
60	123.05	118.39	Open To Flow (2)
119	209.38	125.48	Shut-In(2)
181	1315.38	127.25	End Shut-In(2)
182	2234.36	127.45	Final Hydro-static

Recovery

Length (ft)	Description	Volume (bbl)
30.00	MUD 100% MUD	0.15
300.00	MUDDY WATER 30%M 70%W	2.35

Gas Rates

Choke (inches)	Pressure (psia)	Gas Rate (Mcf/d)



DRILL STEM TEST REPORT

CAPTIVA ENERGY L.L.C
 2717 CANAL BLVD SUITE C
 HAYS KS 67601
 ATTN: KEITH REAVIS

MEIGS TRUST 1-5

5-29-13

Job Ticket: 16400

DST#: 3

Test Start: 2009.06.01 @ 01:12:49

GENERAL INFORMATION:

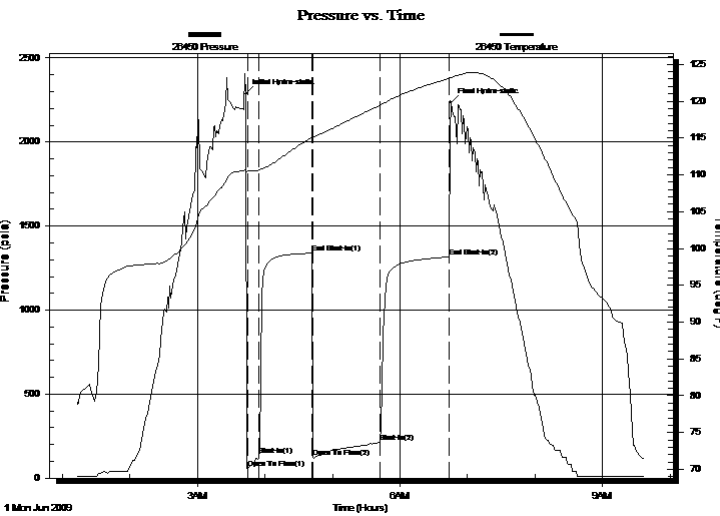
Formation: **SIMPSON SANDS**
 Deviated: No Whipstock: ft (KB)
 Time Tool Opened: 03:44:19
 Time Test Ended: 09:36:49
 Interval: **4516.00 ft (KB) To 4565.00 ft (KB) (TVD)**
 Total Depth: 4565.00 ft (KB) (TVD)
 Hole Diameter: 7.88 inches Hole Condition: Fair
 Test Type: Conventional Bottom Hole (Initial)
 Tester: DAVID NICHOLS
 Unit No: 3345 114 M GB
 Reference Elevations: 1968.00 ft (KB)
 1956.00 ft (CF)
 KB to GR/CF: 12.00 ft

Serial #: 26450

Outside

Press@RunDepth: 1315.68 psia @ 4560.00 ft (KB) Capacity: 5000.00 psia
 Start Date: 2009.06.01 End Date: 2009.06.01 Last Calib.: 2009.06.01
 Start Time: 01:13:36 End Time: 09:37:47 Time On Btm: 2009.06.01 @ 03:43:18
 Time Off Btm: 2009.06.01 @ 06:45:18

TEST COMMENT: 10-INITIAL OPENING WEAK BLOW BUILT TO 3 INCHES INTO WATER
 45-INITIAL SHUT IN NO BLOW BACK
 60-FINAL OPENING WEAK BLOW BUILT TO BOTTOM OF THE BUCKET IN 55 MINS
 60-FINAL SHUT IN NO BLOW BACK



PRESSURE SUMMARY

Time (Min.)	Pressure (psia)	Temp (deg F)	Annotation
0	2286.70	110.60	Initial Hydro-static
1	57.70	110.37	Open To Flow (1)
12	133.77	110.64	Shut-In(1)
59	1339.38	115.08	End Shut-In(1)
60	122.92	115.07	Open To Flow (2)
119	213.98	119.43	Shut-In(2)
180	1315.68	123.05	End Shut-In(2)
182	2236.45	123.21	Final Hydro-static

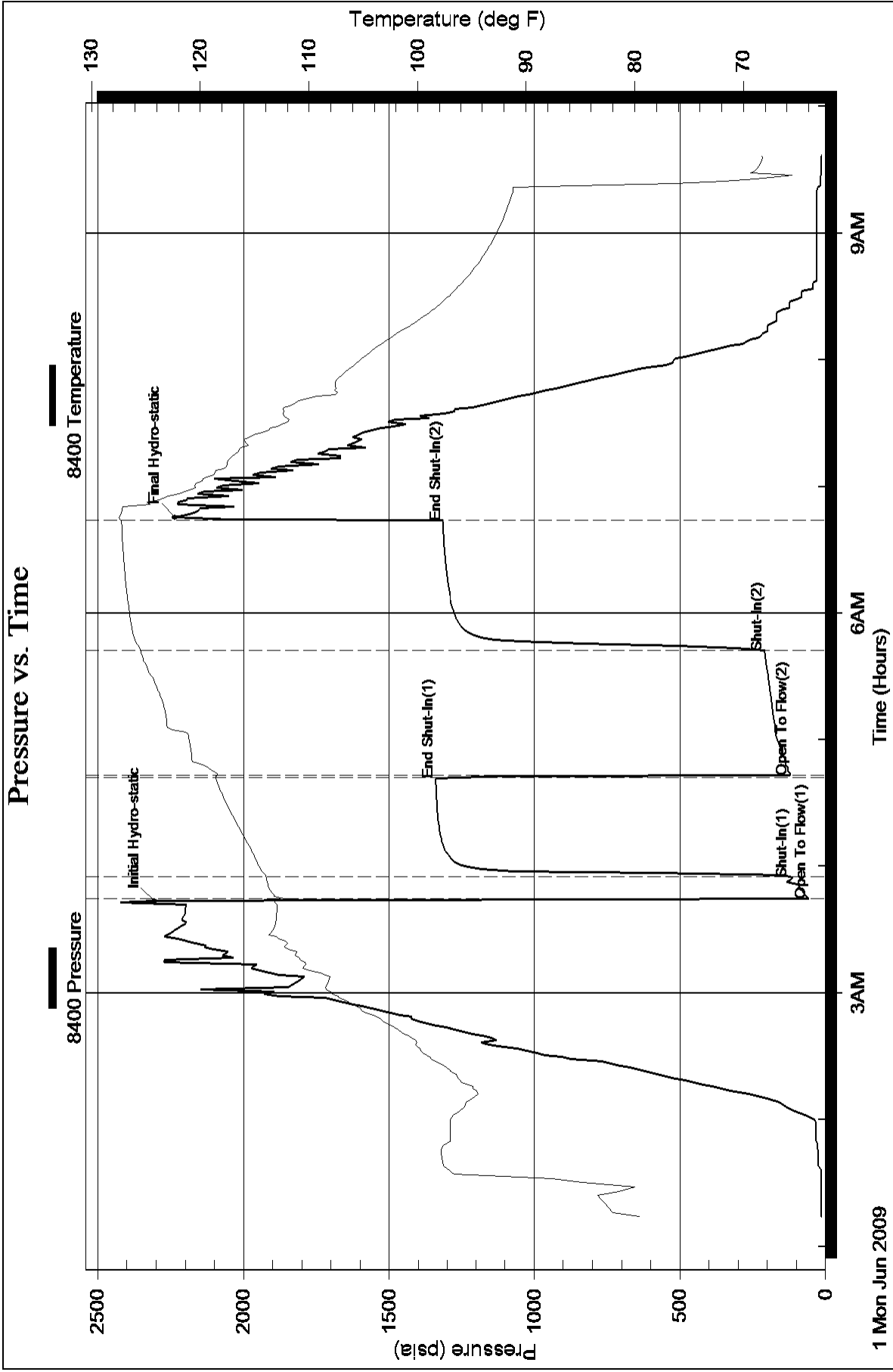
Recovery

Length (ft)	Description	Volume (bbl)
30.00	MUD 100% MUD	0.15
300.00	MUDDY WATER 30%M 70%W	2.35

Gas Rates

	Choke (inches)	Pressure (psia)	Gas Rate (Mcf/d)

Pressure vs. Time



Pressure vs. Time

