

Sean P. Deenihan

Petroleum Geologist

15-151-22360

GEOLOGIST'S REPORT DRILLING TIME AND SAMPLE LOG

COMPANY Shelby Resources, LLC.

LEASE Aschenbrenner #1-5

FIELD Wilkcat

LOCATION 366' FSL & 1799' FEL

SEC 5 TWP 29S RGE 13W

COUNTY Pratt STATE KS

CONTRACTOR Sterling Drilling Co., Rig #4

SPUD 5000' COMP LTD 5000'

MUD UP TYPE MUD Chemical

SAMPLES SAVED FROM 3600' TO RTD

DRILLING TIME KEPT FROM 3600' TO RTD

SAMPLES EXAMINED FROM 3600' TO RTD

GEOLOGICAL SUPERVISION FROM 3600' -RTD

GEOLOGIST ON WELL Sean Deenihan

ELEVATIONS

KB 1954'

DF 1953'

GL 1945'

Measurements Are All From KB

CASING

CONDUCTOR SURFACE 8 5/8" @ 257

PRODUCTION None

ELECTRICAL

SURVEYS

CND DIL

FORMATION TOPS	ELECTRIC LOG	SAMPLE
Heebner	3870 (-1916)	3868 (-1914)
Brown Lime	4056 (-2102)	4058 (-2104)
Lansing	4078 (-2124)	4078 (-2124)
BKC	4490 (-2536)	4490 (-2536)
Marmaton	4510 (-2556)	4510 (-2556)
Miss Chert	4710 (-2756)	4708 (-2754)
Kinderhook Cht	4758 (-2804)	4758 (-2804)
Viola	4880 (-2926)	4874 (-2920)
Simpson Sh.	4962 (-3008)	4986 (-3032)

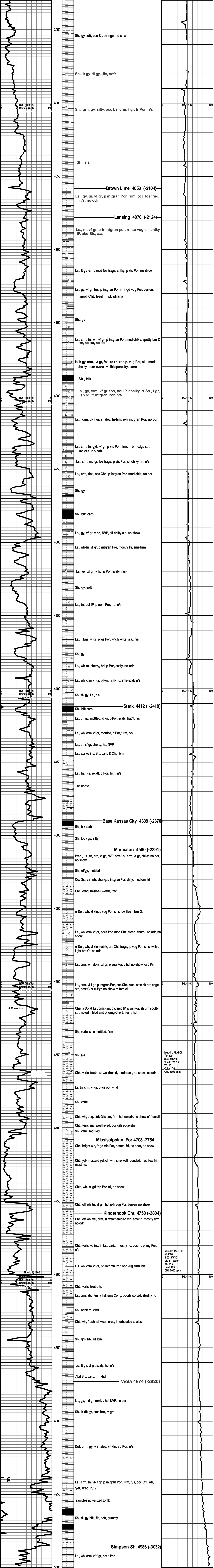


REMARKS With low relative structural position and no shows of oil, the decision was made to plug and abandon the Aschenbrenner #1-5.

Respectfully Submitted,

Sean Deenihan

15-151-22360



Mud-Co Mud Ck @ 4426' 8.00 SR10 Vis 48 WL 9.2 WL 10 Cake 132 CHL 5000 ppm

Mud-Co Mud Ck @ 4807' 8.00 SR10 Vis 51 WL 9.1 WL 11.2 Cake 132 CHL 5000 ppm

Mud-Co Mud Ck @ 4807' 8.00 SR10 Vis 51 WL 9.1 WL 11.2 Cake 132 CHL 5000 ppm

Rotary TD 5000 ft @ hrs 9/10/10 Superior Log TD 5000 ft Complete Logging Operations @16:00 hrs