



DRILL STEM TEST REPORT

Prepared For: **Wildcat Oil and Gas LLC.**

PO Box 40
Spivey, KS 67142-0040

ATTN: Terry

McLeod #1

11-30s-8w Kingman,KS

Start Date: 2013.09.01 @ 13:55:56

End Date: 2013.09.01 @ 22:51:26

Job Ticket #: 52452 DST #: 1

Trilobite Testing, Inc
PO Box 362 Hays, KS 67601
ph: 785-625-4778 fax: 785-625-5620

Printed: 2013.09.06 @ 09:33:44

Wildcat Oil and Gas LLC. 11-30s-8w Kingman,KS McLeod #1 DST # 1 Miss. 2013.09.01



TRILOBITE TESTING, INC.

DRILL STEM TEST REPORT

Wildcat Oil and Gas LLC.

11-30s-8w Kingman, KS

PO Box 40
Spivey, KS 67142-0040

McLeod #1

Job Ticket: 52452 DST#: 1

ATTN: Terry

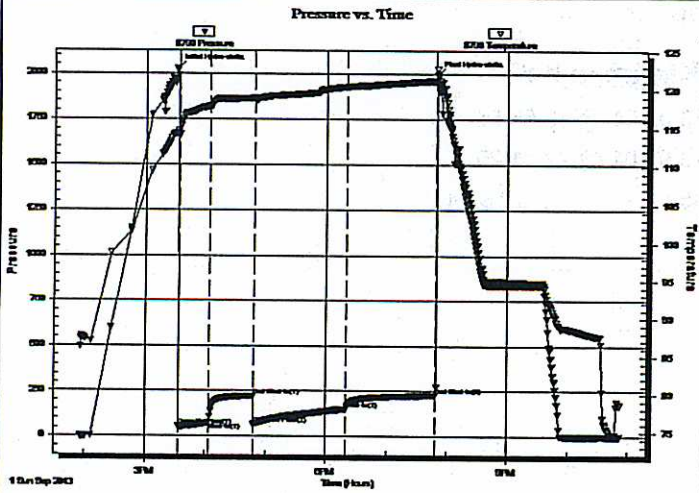
Test Start: 2013.09.01 @ 13:55:56

GENERAL INFORMATION:

Formation: Miss.
 Deviated: No Whipstock: ft (KB)
 Time Tool Opened: 15:33:41
 Time Test Ended: 22:51:26
 Interval: 4090.00 ft (KB) To 4190.00 ft (KB) (TVD)
 Total Depth: 4190.00 ft (KB) (TVD)
 Hole Diameter: 7.88 inches Hole Condition: Fair
 Test Type: Conventional Bottom Hole (Initial)
 Tester: Ryan Reynolds
 Unit No: 48
 Reference Elevations: 1536.00 ft (KB)
 1526.00 ft (CF)
 KB to GR/CF: 10.00 ft

Serial #: 8790 Inside
 Press@RunDepth: 149.44 psig @ 4091.00 ft (KB) Capacity: 8000.00 psig
 Start Date: 2013.09.01 End Date: 2013.09.01 Last Calib.: 2013.09.01
 Start Time: 13:56:01 End Time: 22:51:26 Time On Btm: 2013.09.01 @ 15:30:56
 Time Off Btm: 2013.09.01 @ 19:49:56

TEST COMMENT: IF: Strong blow . BOB @ 2 min. GTS @ 21 min.
 IS: No blow
 FF: Strong blow . BOB immed. Gauged gas throughout
 FSI: No blow



PRESSURE SUMMARY

Time (Min.)	Pressure (psig)	Temp (deg F)	Annotation
0	2025.17	114.32	Initial Hydro-static
3	50.60	114.22	Open To Flow (1)
33	73.56	117.89	Shut-In(1)
77	222.69	118.95	End Shut-In(1)
78	65.07	118.77	Open To Flow (2)
169	149.44	120.42	Shut-In(2)
258	225.97	121.23	End Shut-In(2)
259	1993.60	122.79	Final Hydro-static

Recovery

Length (ft)	Description	Volume (bbl)
120.00	OGCM 7%oil, 15%gas, 78%mud	0.59
120.00	OGCM 7%oil, 10%gas, 83%mud	1.68

Gas Rates

	Choke (inches)	Pressure (psig)	Gas Rate (Mcf/d)
First Gas Rate	0.13	7.00	8.01
Last Gas Rate	0.13	46.00	22.61
Max. Gas Rate	0.13	46.00	22.61



**TRILOBITE
TESTING, INC.**

DRILL STEM TEST REPORT

TOOL DIAGRAM

Wildcat Oil and Gas LLC.

11-30s-8w Kingman, KS

PO Box 40
Spivey, KS 67142-0040

McLeod #1

Job Ticket: 52452

DST#: 1

ATTN: Terry

Test Start: 2013.09.01 @ 13:55:56

Tool Information

Drill Pipe:	Length: 3961.00 ft	Diameter: 3.80 inches	Volume: 55.56 bbl	Tool Weight: 2500.00 lb
Heavy Wt. Pipe:	Length: 0.00 ft	Diameter: inches	Volume: 0.00 bbl	Weight set on Packer: 25000.00 lb
Drill Collar:	Length: 120.00 ft	Diameter: 2.25 inches	Volume: 0.59 bbl	Weight to Pull Loose: 94000.00 lb
			<u>Total Volume: 56.15 bbl</u>	Tool Chased 3.00 ft
Drill Pipe Above KB:	13.00 ft			String Weight: Initial 67000.00 lb
Depth to Top Packer:	4090.00 ft			Final 67500.00 lb
Depth to Bottom Packer:	ft			
Interval between Packers:	100.00 ft			
Tool Length:	122.00 ft			
Number of Packers:	2	Diameter: 6.75 inches		

Tool Comments:

Tool Description

Tool Description	Length (ft)	Serial No.	Position	Depth (ft)	Accum. Lengths
Shut In Tool	5.00			4073.00	
Hydraulic tool	5.00			4078.00	
Safety Joint	2.00			4080.00	
packer	5.00			4085.00	
Packer	5.00			4090.00	22.00 Bottom Of Top Packer
Stubb	1.00			4091.00	
Recorder	0.00	8790	Inside	4091.00	
Recorder	0.00	8792	Outside	4091.00	
perforations	5.00			4096.00	
change Over Sub	1.00			4097.00	
drill Pipe	62.00			4159.00	
Change Over Sub	1.00			4160.00	
Perforations	27.00			4187.00	
Bullnose	3.00			4190.00	100.00 Anchor Tool

Total Tool Length: 122.00



**TRILOBITE
TESTING, INC.**

DRILL STEM TEST REPORT

FLUID SUMMARY

Wildcat Oil and Gas LLC.

11-30s-8w Kingman,KS

PO Box 40
Spivey, KS 67142-0040

McLeod #1

Job Ticket: 52452

DST#: 1

ATTN: Terry

Test Start: 2013.09.01 @ 13:55:56

Mud and Cushion Information

Mud Type: Gel Chem

Mud Weight: 9.00 lb/gal

Viscosity: 56.00 sec/qt

Water Loss: 8.97 in³

Resistivity: ohm.m

Salinity: 3000.00 ppm

Filter Cake: 0.02 inches

Cushion Type:

Cushion Length: ft

Cushion Volume: bbl

Gas Cushion Type:

Gas Cushion Pressure: psig

Oil API:

deg API

Water Salinity: 3000 ppm

Recovery Information

Recovery Table

Length ft	Description	Volume bbl
120.00	OGCM 7%oil, 15%gas, 78%mud	0.590
120.00	OGCM 7%oil, 10%gas, 83%mud	1.683

Total Length: 240.00 ft Total Volume: 2.273 bbl

Num Fluid Samples: 1

Num Gas Bombs: 1

Serial #: RR-1

Laboratory Name: Caraway

Laboratory Location: Liberal, KS

Recovery Comments:



**TRILOBITE
TESTING, INC.**

DRILL STEM TEST REPORT

GAS RATES

Wildcat Oil and Gas LLC.

11-30s-8w Kingman,KS

PO Box 40
Spivey, KS 67142-0040

McLeod #1

Job Ticket: 52452

DST#: 1

ATTN: Terry

Test Start: 2013.09.01 @ 13:55:56

Gas Rates Information

Temperature: 59 (deg F)
Relative Density: 0.65
Z Factor: 0.8

Gas Rates Table

Flow Period	Elapsed Time	Choke (inches)	Pressure (psig)	Gas Rate (Mcf/d)
1	30	0.13	7.00	8.01
2	10	0.13	11.00	9.51
2	20	0.13	18.00	12.13
2	30	0.13	24.00	14.37
2	40	0.13	30.00	16.62
2	50	0.13	35.00	18.49
2	60	0.13	38.00	19.61
2	70	0.13	41.00	20.73
2	80	0.13	44.00	21.86
2	90	0.13	46.00	22.61

Serial #: 8790

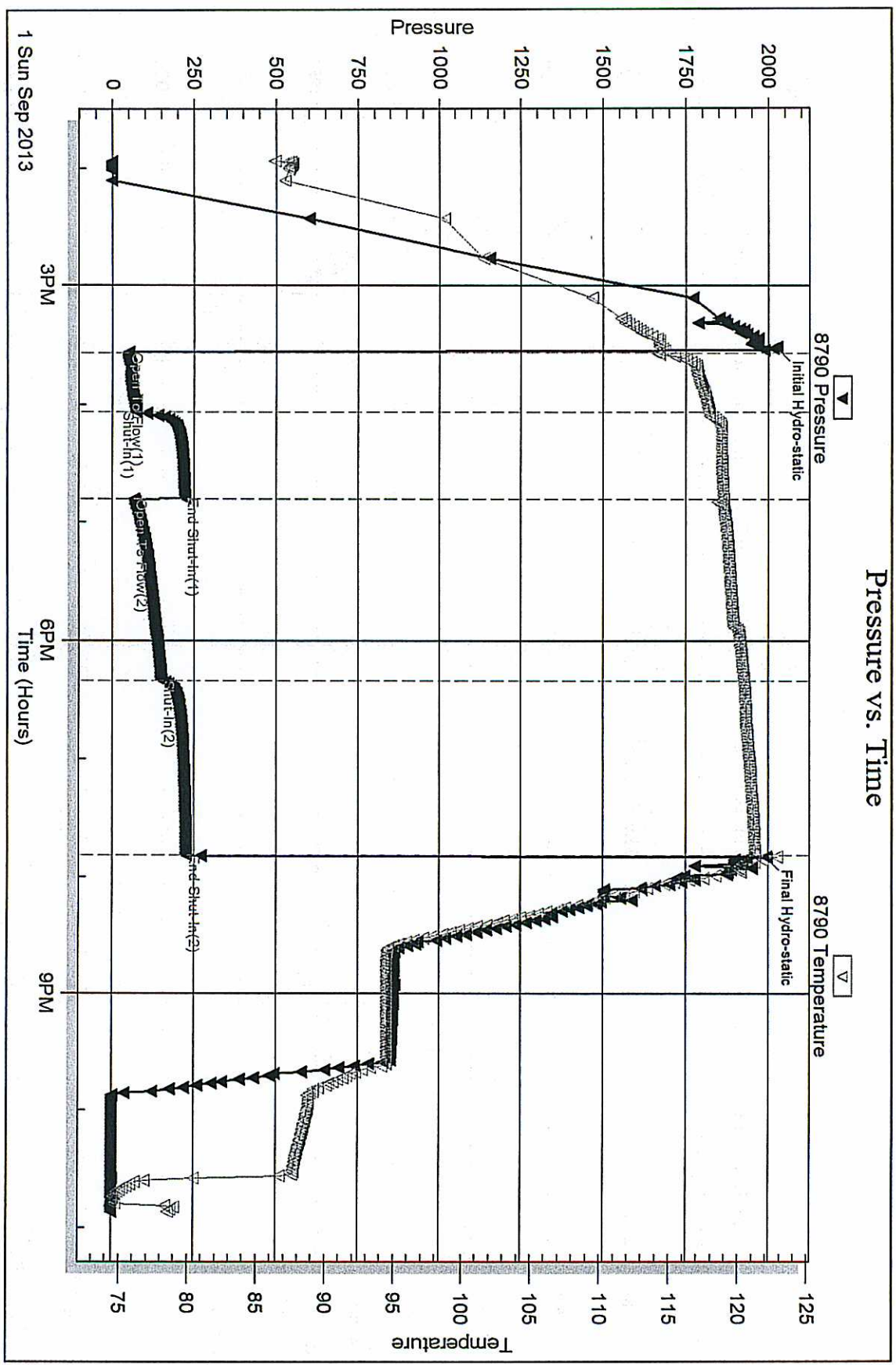
Inside

Wildcat Oil and Gas LLC.

McLeod #1

DST Test Number: 1

Pressure vs. Time



Tribble Testing, Inc

Ref. No: 52452

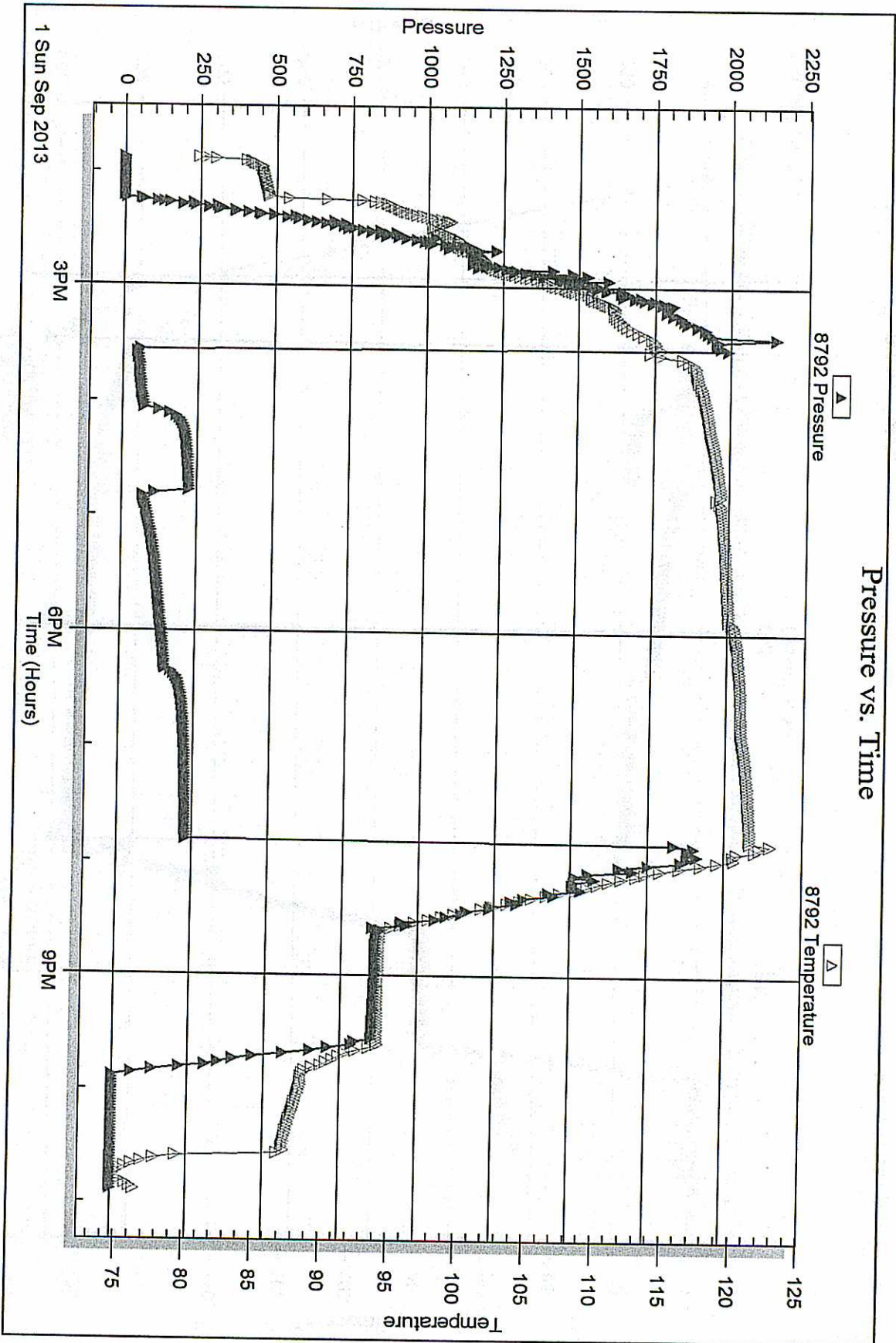
Printed: 2013.09.06 @ 09:33:46

Serial #: 8792

Outside Wildcat Oil and Gas LLC.

McLeod #1

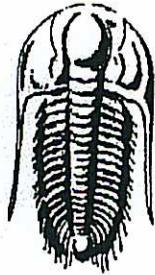
DST Test Number: 1



Trilobite Testing, Inc

Ref. No: 52452

Printed: 2013.09.06 @ 09:33:46



**TRILOBITE
TESTING, INC.**

DRILL STEM TEST REPORT

Prepared For: **Wildcat Oil and Gas LLC.**

PO Box 40
Spivey, KS 67142-0040

ATTN: Terry

McLeod #1

11-30s-8w Kingman,KS

Start Date: 2013.09.02 @ 21:05:37

End Date: 2013.09.03 @ 04:16:37

Job Ticket #: 52453 DST #: 2

Trilobite Testing, Inc

PO Box 362 Hays, KS 67601

ph: 785-625-4778 fax: 785-625-5620

Printed: 2013.09.06 @ 09:39:02

Wildcat Oil and Gas LLC.

11-30s-8w Kingman,KS

McLeod #1

DST # 2

Viola

2013.09.02



**TRILOBITE
TESTING, INC.**

DRILL STEM TEST REPORT

Wildcat Oil and Gas LLC.

11-30s-8w Kingman, KS

PO Box 40
Spivey, KS 67142-0040

McLeod #1

Job Ticket: 52453 DST#: 2

ATTN: Terry

Test Start: 2013.09.02 @ 21:05:37

GENERAL INFORMATION:

Formation: Viola

Deviated: No Whipstock: ft (KB)

Time Tool Opened: 23:07:07

Time Test Ended: 04:16:37

Test Type: Conventional Bottom Hole (Reset)

Tester: Ryan Reynolds

Unit No: 48

Interval: 4400.00 ft (KB) To 4530.00 ft (KB) (TVD)

Total Depth: 4530.00 ft (KB) (TVD)

Hole Diameter: 7.88 inches Hole Condition: Fair

Reference Elevations: 1536.00 ft (KB)

1526.00 ft (CF)

KB to GR/CF: 10.00 ft

Serial #: 8790

Inside

Press@RunDepth: 27.52 psig @ 4401.00 ft (KB)

Start Date: 2013.09.02

End Date:

2013.09.03

Capacity: 8000.00 psig

Last Calib.: 2013.09.03

Start Time: 21:05:42

End Time:

04:16:36

Time On Btm: 2013.09.02 @ 23:05:22

Time Off Btm: 2013.09.03 @ 01:08:52

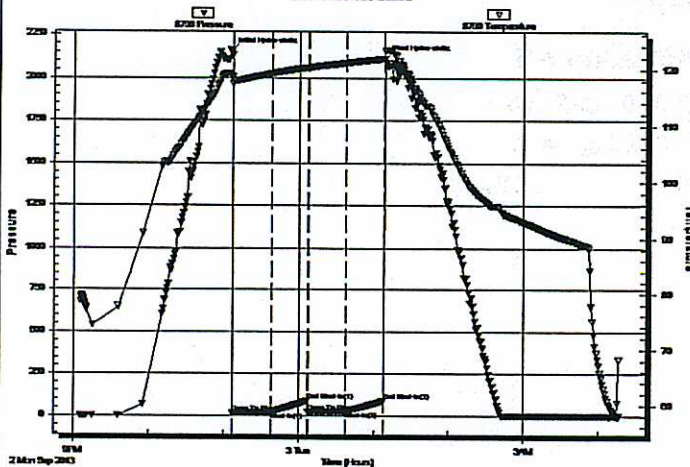
TEST COMMENT: IF: Weak blow . 1/4" - Surface

IS: No blow

FF: Weak surf. blow .

FSI: No blow

Pressure vs. Time



PRESSURE SUMMARY

Time (Min.)	Pressure (psig)	Temp (deg F)	Annotation
0	2151.80	118.75	Initial Hydro-static
2	16.67	117.36	Open To Flow (1)
34	22.77	119.26	Shut-In(1)
62	90.17	120.33	End Shut-In(1)
63	20.70	120.31	Open To Flow (2)
93	27.52	121.14	Shut-In(2)
123	88.94	121.86	End Shut-In(2)
124	2110.88	123.14	Final Hydro-static

Recovery

Length (ft)	Description	Volume (bbl)
10.00	Drig mud 100% mud	0.05
0.00	60' GIP	0.00

* Recovery from multiple tests

Gas Rates

Choke (Inches)	Pressure (psig)	Gas Rate (Mcf/d)



**TRILOBITE
TESTING, INC.**

DRILL STEM TEST REPORT

TOOL DIAGRAM

Wildcat Oil and Gas LLC.

11-30s-8w Kingman,KS

PO Box 40
Spivey, KS 67142-0040

McLeod #1

Job Ticket: 52453

DST#: 2

ATTN: Terry

Test Start: 2013.09.02 @ 21:05:37

Tool Information

Drill Pipe:	Length: 4271.00 ft	Diameter: 3.80 inches	Volume: 59.91 bbl	Tool Weight: 2500.00 lb
Heavy Wt. Pipe:	Length: 0.00 ft	Diameter: inches	Volume: 0.00 bbl	Weight set on Packer: 25000.00 lb
Drill Collar:	Length: 120.00 ft	Diameter: 2.25 inches	Volume: 0.59 bbl	Weight to Pull Loose: 93000.00 lb
			<u>Total Volume: 60.50 bbl</u>	Tool Chased 0.00 ft
Drill Pipe Above KB:	13.00 ft			String Weight: Initial 71000.00 lb
Depth to Top Packer:	4400.00 ft			Final 72000.00 lb
Depth to Bottom Packer:	ft			
Interval between Packers:	130.00 ft			
Tool Length:	152.00 ft			
Number of Packers:	2	Diameter: 6.75 inches		

Tool Comments:

Tool Description

Tool Description	Length (ft)	Serial No.	Position	Depth (ft)	Accum. Lengths
Shut In Tool	5.00			4383.00	
Hydraulic tool	5.00			4388.00	
Safety Joint	2.00			4390.00	
packer	5.00			4395.00	
Packer	5.00			4400.00	22.00 Bottom Of Top Packer
Stubb	1.00			4401.00	
Recorder	0.00	8790	Inside	4401.00	
Recorder	0.00	8792	Outside	4401.00	
perforations	4.00			4405.00	
change Over Sub	1.00			4406.00	
drill Pipe	93.00			4499.00	
Change Over Sub	1.00			4500.00	
Perforations	27.00			4527.00	
Bullnose	3.00			4530.00	130.00 Anchor Tool
Total Tool Length:	152.00				



**TRILOBITE
TESTING, INC.**

DRILL STEM TEST REPORT

FLUID SUMMARY

Wildcat Oil and Gas LLC.

11-30s-8w Kingman,KS

PO Box 40
Spivey, KS 67142-0040

McLeod #1

Job Ticket: 52453

DST#: 2

ATTN: Terry

Test Start: 2013.09.02 @ 21:05:37

Mud and Cushion Information

Mud Type: Gel Chem	Cushion Type:	Oil API:	deg API
Mud Weight: 9.00 lb/gal	Cushion Length: ft	Water Salinity:	5000 ppm
Viscosity: 40.00 sec/qt	Cushion Volume: bbl		
Water Loss: 10.37 in ³	Gas Cushion Type:		
Resistivity: ohm.m	Gas Cushion Pressure: psig		
Salinity: 5000.00 ppm			
Filter Cake: 0.02 inches			

Recovery Information

Recovery Table

Length ft	Description	Volume bbl
10.00	Drlg mud 100%mud	0.049
0.00	60' GIP	0.000

Total Length: 10.00 ft Total Volume: 0.049 bbl

Num Fluid Samples: 0

Num Gas Bombs: 0

Serial #: none

Laboratory Name:

Laboratory Location:

Recovery Comments:

Serial #: 8790

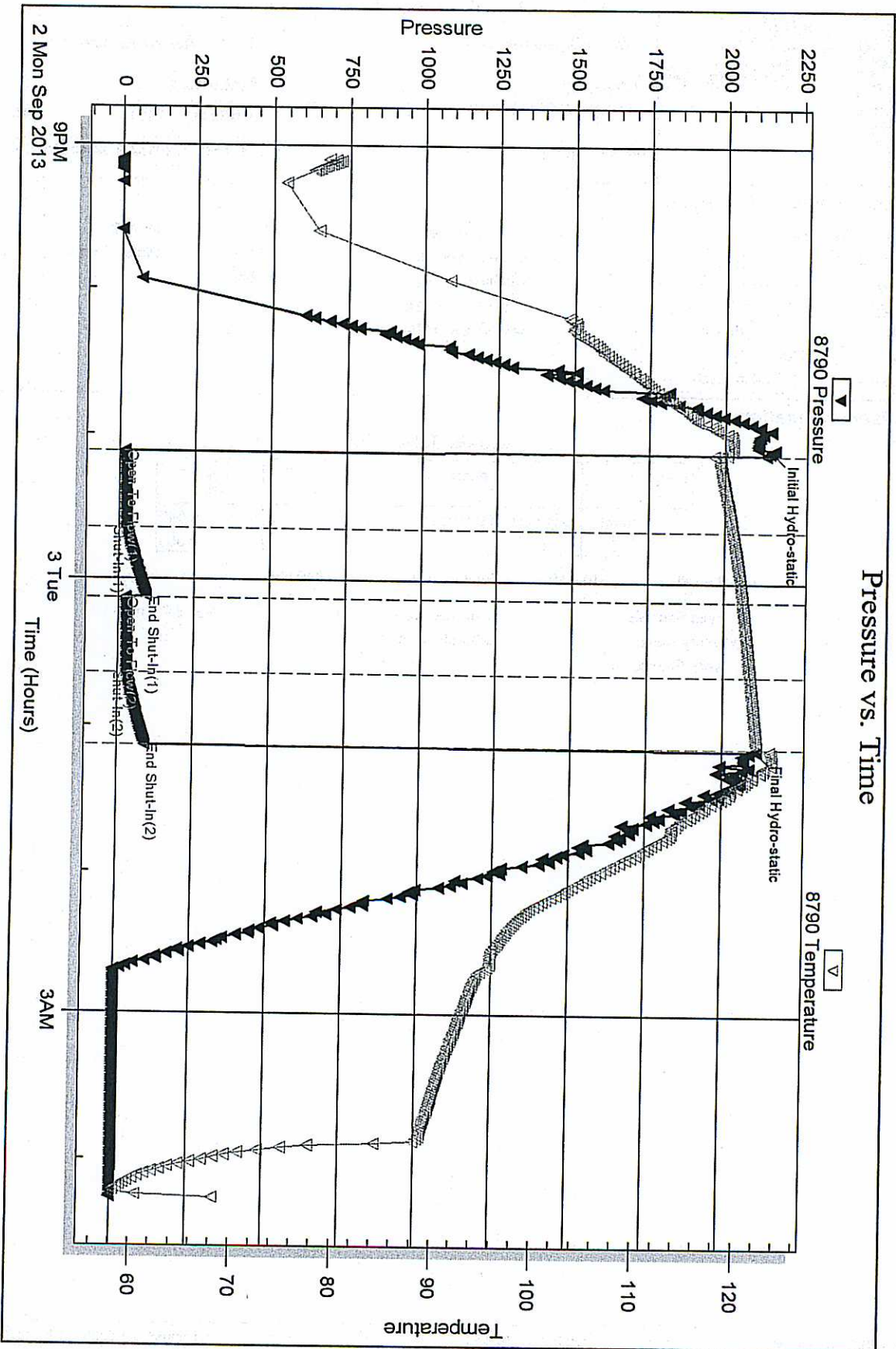
Inside

Wildcat Oil and Gas LLC

McLeod #1

DST Test Number: 2

Pressure vs. Time



Triobite Testing, Inc

Ref. No: 52453

Printed: 2013.09.06 @ 09:39:04

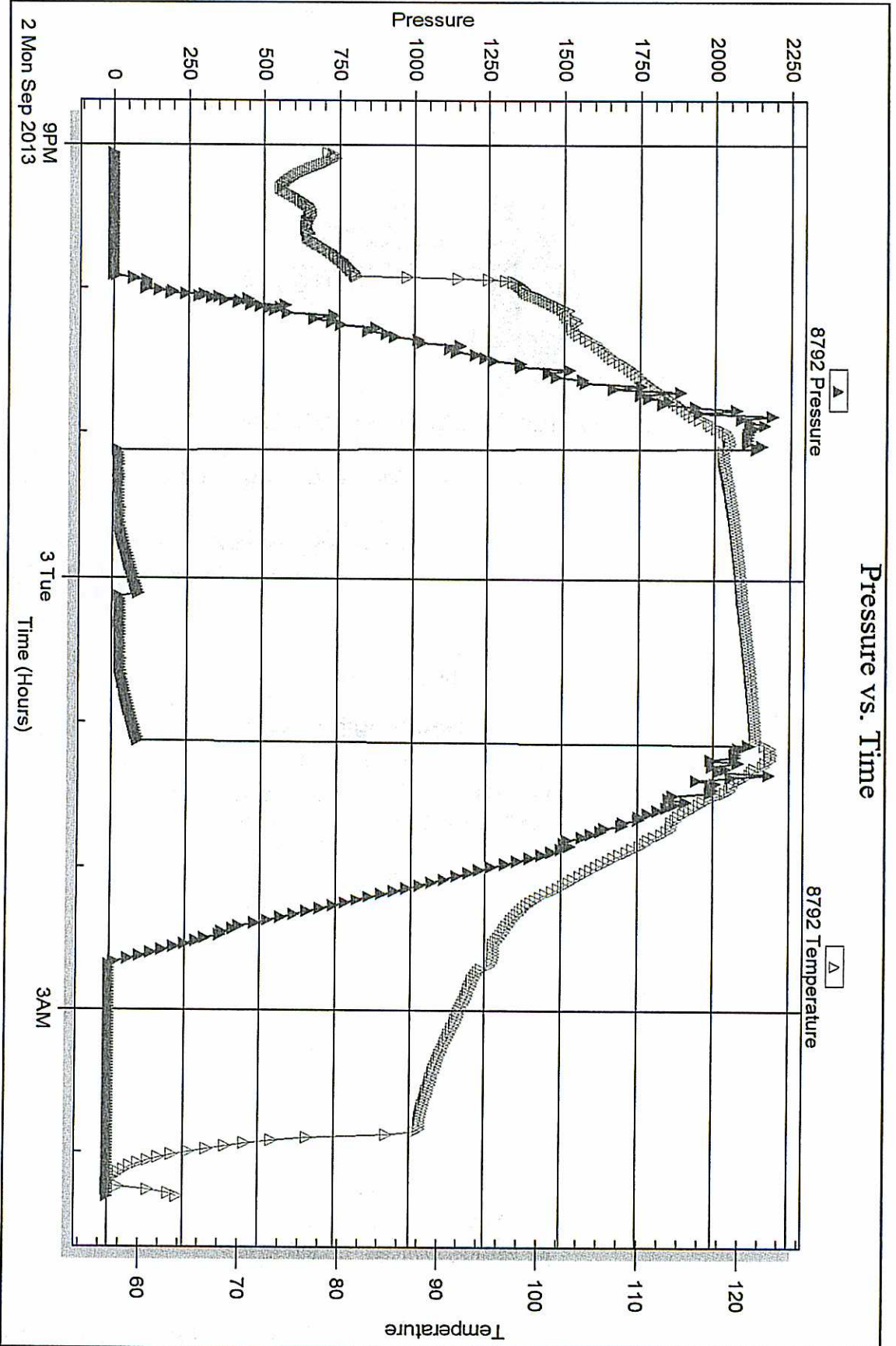
Serial #: 8792

Outside Wildcat Oil and Gas LLC.

McLeod #1

DST Test Number: 2

Pressure vs. Time



Triobite Testing, Inc

Ref. No: 52453

Printed: 2013.09.06 @ 09:39:04



**TRILOBITE
TESTING, INC.**

DRILL STEM TEST REPORT

Prepared For: **Wildcat Oil and Gas LLC.**

PO Box 40
Spivey, KS 67142-0040

ATTN: Terry

McLeod #1

11-30s-8w Kingman,KS

Start Date: 2013.09.03 @ 17:00:42

End Date: 2013.09.04 @ 01:15:27

Job Ticket #: 52454 DST #: 3

Trilobite Testing, Inc

PO Box 362 Hays, KS 67601

ph: 785-625-4778 fax: 785-625-5620

Printed: 2013.09.06 @ 09:37:53



**TRILOBITE
TESTING, INC.**

DRILL STEM TEST REPORT

Wildcat Oil and Gas LLC.

11-30s-8w Kingman, KS

PO Box 40
Spivey, KS 67142-0040

McLeod #1

Job Ticket: 52454

DST#: 3

ATTN: Terry

Test Start: 2013.09.03 @ 17:00:42

GENERAL INFORMATION:

Formation: Simpson Sd.

Deviated: No Whipstock: ft (KB)

Time Tool Opened: 19:11:27

Time Test Ended: 01:15:27

Test Type: Conventional Bottom Hole (Reset)

Tester: Ryan Reynolds

Unit No: 48

Interval: 4537.00 ft (KB) To 4562.00 ft (KB) (TVD)

Total Depth: 4562.00 ft (KB) (TVD)

Hole Diameter: 7.88 inches Hole Condition: Fair

Reference Elevations: 1536.00 ft (KB)

1526.00 ft (CF)

KB to GR/CF: 10.00 ft

Serial #: 8790

Inside

Press@RunDepth: 503.25 psig @ 4538.00 ft (KB)

Start Date: 2013.09.03

End Date:

2013.09.04

Capacity:

8000.00 psig

Start Time:

17:00:47

End Time:

01:15:26

Last Calib.:

2013.09.04

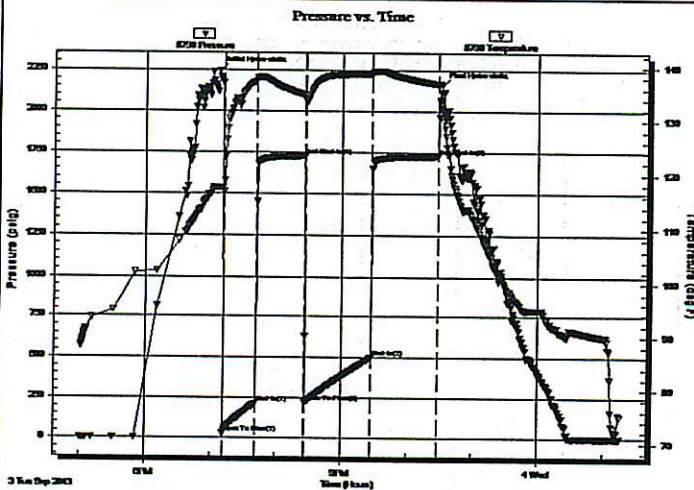
Time On Btm:

2013.09.03 @ 19:07:27

Time Off Btm:

2013.09.03 @ 22:31:27

TEST COMMENT: IF: Strong blow . BOB @ 12 min. No GTS.
IS: Weak blow . surf. - 3/4"
FF: Strong blow . BOB @ 13 min. NO GTS.
FSI: Weak blow . surf. - 2"



PRESSURE SUMMARY

Time (Min.)	Pressure (psig)	Temp (deg F)	Annotation
0	2245.07	117.67	Initial Hydro-static
4	27.71	116.84	Open To Flow (1)
35	218.29	137.46	Shut-In(1)
79	1724.10	134.82	End Shut-In(1)
80	223.13	134.09	Open To Flow (2)
140	503.25	138.78	Shut-In(2)
202	1724.10	136.85	End Shut-In(2)
204	2157.40	132.32	Final Hydro-static

Recovery

Length (ft)	Description	Volume (bbl)
1050.00	GMCW 5%gas, 10%mud, 85%w tr	13.64

* Recovery from multiple tests

Gas Rates

	Choke (inches)	Pressure (psig)	Gas Rate (Mcf/d)



**TRILOBITE
TESTING, INC.**

DRILL STEM TEST REPORT

TOOL DIAGRAM

Wildcat Oil and Gas LLC.

11-30s-8w Kingman, KS

PO Box 40
Spivey, KS 67142-0040

McLeod #1

Job Ticket: 52454

DST#: 3

ATTN: Terry

Test Start: 2013.09.03 @ 17:00:42

Tool Information

Drill Pipe:	Length: 4426.00 ft	Diameter: 3.80 inches	Volume: 62.09 bbl	Tool Weight: 2500.00 lb
Heavy Wt. Pipe:	Length: 0.00 ft	Diameter: inches	Volume: 0.00 bbl	Weight set on Packer: 25000.00 lb
Drill Collar:	Length: 120.00 ft	Diameter: 2.25 inches	Volume: 0.59 bbl	Weight to Pull Loose: 85000.00 lb
			<u>Total Volume: 62.68 bbl</u>	Tool Chased 0.00 ft
Drill Pipe Above KB:	31.00 ft			String Weight: Initial 72000.00 lb
Depth to Top Packer:	4537.00 ft			Final 77000.00 lb
Depth to Bottom Packer:	ft			
Interval between Packers:	25.00 ft			
Tool Length:	47.00 ft			
Number of Packers:	2	Diameter: 6.75 inches		

Tool Comments:

Tool Description	Length (ft)	Serial No.	Position	Depth (ft)	Accum. Lengths
Shut In Tool	5.00			4520.00	
Hydraulic tool	5.00			4525.00	
Safety Joint	2.00			4527.00	
packer	5.00			4532.00	
Packer	5.00			4537.00	22.00 Bottom Of Top Packer
Stubb	1.00			4538.00	
Recorder	0.00	8790	Inside	4538.00	
Recorder	0.00	8792	Outside	4538.00	
Perforations	21.00			4559.00	
Bullnose	3.00			4562.00	25.00 Anchor Tool
Total Tool Length:	47.00				



**TRILOBITE
TESTING, INC.**

DRILL STEM TEST REPORT

FLUID SUMMARY

Wildcat Oil and Gas LLC.

11-30s-8w Kingman,KS

PO Box 40
Spivey, KS 67142-0040

McLeod #1

Job Ticket: 52454

DST#: 3

ATTN: Terry

Test Start: 2013.09.03 @ 17:00:42

Mud and Cushion Information

Mud Type: Gel Chem

Cushion Type:

Oil API:

deg API

Mud Weight: 9.00 lb/gal

Cushion Length:

ft

Water Salinity:

61000 ppm

Viscosity: 57.00 sec/qt

Cushion Volume:

bbf

Water Loss: 9.58 in³

Gas Cushion Type:

Resistivity: ohm.m

Gas Cushion Pressure:

psig

Salinity: 6000.00 ppm

Filter Cake: 0.02 inches

Recovery Information

Recovery Table

Length ft	Description	Volume bbf
1050.00	GMCW 5%gas, 10%mud, 85%w tr	13.636

Total Length: 1050.00 ft

Total Volume: 13.636 bbl

Num Fluid Samples: 0

Num Gas Bombs: 0

Serial #: none

Laboratory Name:

Laboratory Location:

Recovery Comments:

Serial #: 8790

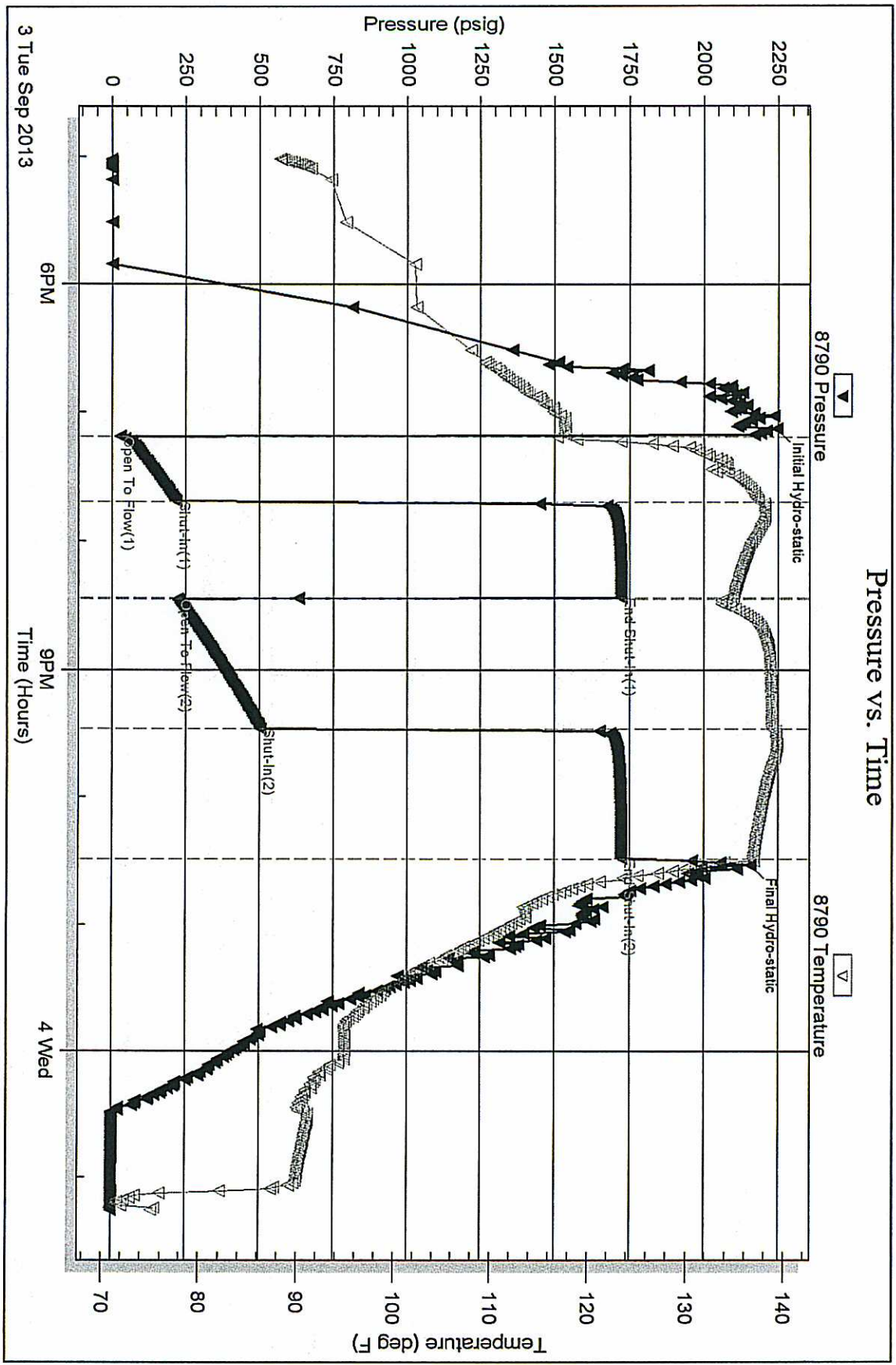
Inside

Wildcat Oil and Gas LLC.

MbLeod #1

DST Test Number: 3

Pressure vs. Time

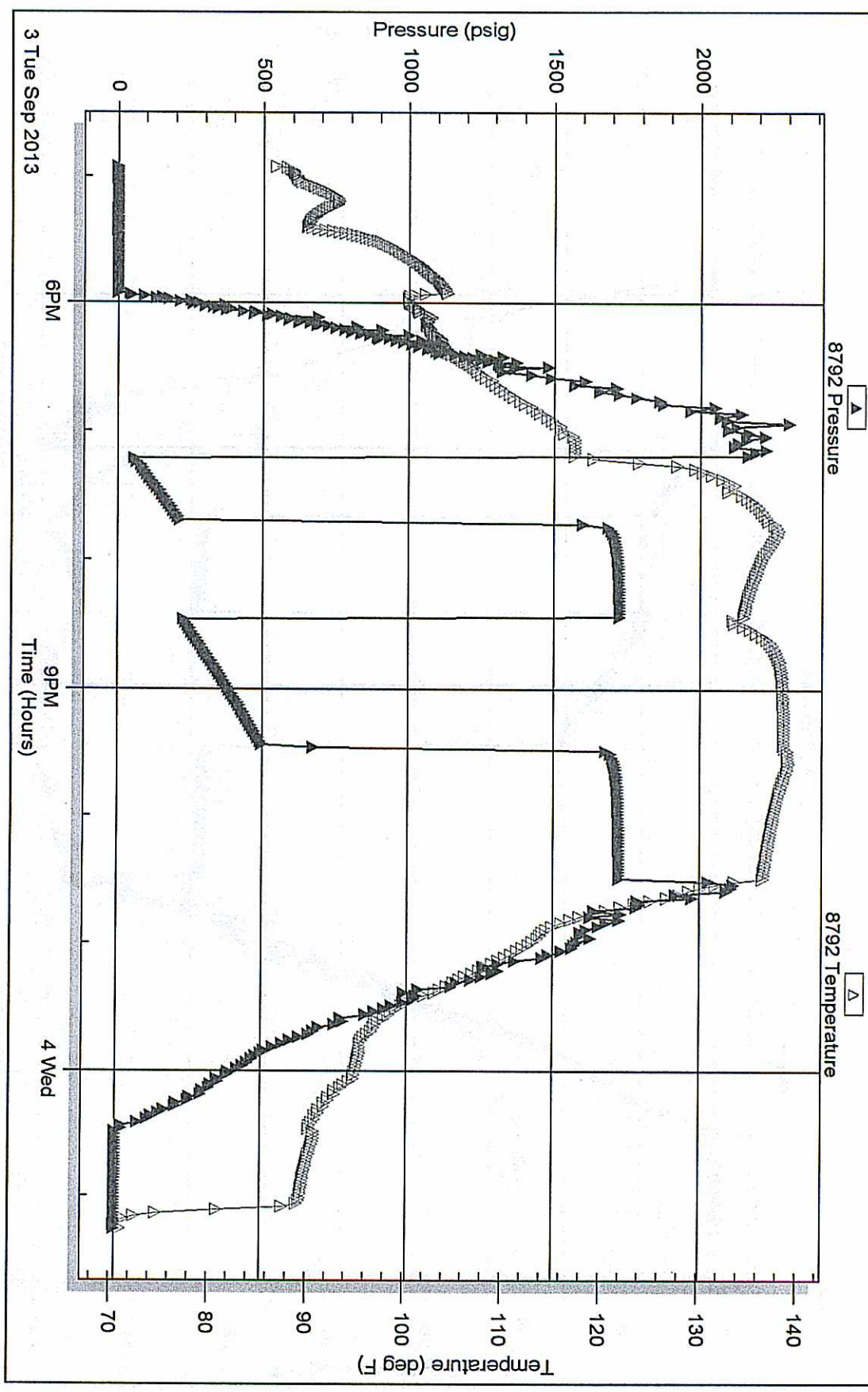


Triobite Testing, Inc

Ref. No: 52454

Printed: 2013.09.06 @ 09:37:54

Pressure vs. Time





TRILOBITE TESTING INC.

1515 Commerce Parkway • Hays, Kansas 67601

Test Ticket

NO. 52452

Well Name & No. McLead #1 Test No. 1 Date 9-1-13
 Company Wildcat O & G, LLC. Elevation 1536 KB 1526 GL
 Address P.O. Box 40 Spivey, KS 67142-0040
 Co. Rep / Geo. Terry Rig Hardt Drlg #1
 Location: Sec. 11 Twp. 30s. Rge. 8w. Co. Kingman State KS

Interval Tested 4090-4190 Zone Tested Mississippi
 Anchor Length 100 Drill Pipe Run 3961 Mud Wt. 9.2
 Top Packer Depth 4085 Drill Collars Run 120 Vis 56
 Bottom Packer Depth 4090 Wt. Pipe Run Ø WL 9.0
 Total Depth 4190 Chlorides 3000 ppm System LCM 2*

Blow Description IF: Strong blow, BOB @ 2 min, GTSE @ 21 min.

IST: No blow

FF: Strong blow, BOB immersed, Gauged gas throughout.

FSI: No blow.

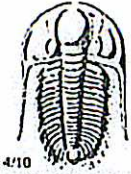
Rec	Feet of	%gas	%oil	%water	%mud
<u>120</u>	<u>Ø 6 CM</u>	<u>10</u>	<u>7</u>	<u>Ø</u>	<u>83</u>
<u>120</u>	<u>Ø 6 CM</u>	<u>15</u>	<u>7</u>	<u>Ø</u>	<u>78</u>
Rec	Feet of	%gas	%oil	%water	%mud
Rec	Feet of	%gas	%oil	%water	%mud
Rec	Feet of	%gas	%oil	%water	%mud

Rec Total 240 BHT 123 Gravity N/C API RW N/C @ N/C °F Chlorides 3000 ppm

(A) Initial Hydrostatic 2025 Test 1250 T-On Location 1300
 (B) First Initial Flow 51 Jars T-Started 1356
 (C) First Final Flow 74 Safety Joint 75 T-Open 1534
 (D) Initial Shut-In 223 Circ Sub T-Pulled 1950
 (E) Second Initial Flow 65 Hourly Standby T-Out 2251
 (F) Second Final Flow 149 Mileage 94 145.70 Comments
 (G) Final Shut-In 226 Sampler
 (H) Final Hydrostatic 1994 Straddle Ruined Shale Packer
 Shale Packer Ruined Packer
 Extra Packer Extra Copies
 Extra Recorder Sub Total 0
 Day Standby Total 1470.70
 Accessibility MP/DST Disc't

Sub Total 1470.70
Approved By [Signature] Our Representative Ryan Reynolds

Trilobite Testing Inc. shall not be liable for damaged or any kind of the property or personnel of the one for whom a test is made, or for any loss suffered or sustained, directly or indirectly, through the use of its equipment, or its statements or opinion concerning the results of any test, tools lost or damaged in the hole shall be paid for at cost by the party for whom the test is made.



TRILOBITE TESTING INC.

1515 Commerce Parkway • Hays, Kansas 67601

Test Ticket

NO. 52453

Well Name & No. M-Lead #1 Test No. 2 Date 9-2-13
 Company Wildcat O&G, LLC Elevation 1536 KB 1526 GL
 Address P.O. Box 40 Spivey, KS 67142-0040
 Co. Rep / Geo. Terry Rig Hardt 1
 Location: Sec. 11 Twp. 30s. Rge. 8w. Co. Kingman State Ks

Interval Tested 4400-4530 Zone Tested Viola
 Anchor Length 130 Drill Pipe Run 4271 Mud Wt. 9.2
 Top Packer Depth 4395 Drill Collars Run 120 Vis 40
 Bottom Packer Depth 4400 Wt. Pipe Run Ø WL 10.4
 Total Depth 4530 Chlorides 5000 ppm System LCM 4"

Blow Description IF: Weak blow. 1/4" - surf.
ISI: No blow.
FF: Weak surf. blow.
FSI: No blow.

Rec	Feet of	%gas	%oil	%water	%mud
<u>60</u>	<u>ETP</u>	<u>100</u>			
<u>10</u>	<u>Dr. lg mud</u>			<u>100</u>	
Rec	Feet of	%gas	%oil	%water	%mud
Rec	Feet of	%gas	%oil	%water	%mud

Rec Total 70 BHT 123 Gravity N/C API RW N/C @ N/C °F Chlorides 5000 ppm
 (A) Initial Hydrostatic 2152 Test 1250 T-On Location 2045
 (B) First Initial Flow 17 Jars T-Started 2106
 (C) First Final Flow 23 Safety Joint 75 T-Open 2307
 (D) Initial Shut-In 90 Circ Sub T-Pulled 0107
 (E) Second Initial Flow 21 Hourly Standby T-Out 0417
 (F) Second Final Flow 28 Mileage 94 145.70 Comments _____
 (G) Final Shut-In 89 Sampler _____
 (H) Final Hydrostatic 2111 Straddle _____
 Shale Packer 250 Ruined Shale Packer _____
 Extra Packer _____ Ruined Packer _____
 Extra Recorder _____ Sub Total 0
 Day Standby _____ Total 1720.70
 Accessibility _____ MP/DST Disc't _____
 Sub Total 1720.70

Approved By Jay D. Miller Our Representative Ryan Reynolds

Trilobite Testing Inc. shall not be liable for damaged of any kind of the property or personnel of the one for whom a test is made, or for any loss suffered or sustained, directly or indirectly, through the use of its equipment, or its statements or opinion concerning the results of any test, tools lost or damaged in the hole shall be paid for at cost by the party for whom the test is made.



TRILOBITE TESTING INC.

1515 Commerce Parkway • Hays, Kansas 67601

Test Ticket

NO. 52454

Well Name & No. McLeod #1 Test No. 3 Date 9-3-13
 Company Wildcat O & G, LLC Elevation 1536 KB 1526 GL
 Address P.O. Box 40 Spivey, KS 67142 - 0040
 Co. Rep / Geo. Terry Rig Hardt 1
 Location: Sec. 11 Twp. 30s. Rge. 8w. Co. Kingman State KS

Interval Tested 4537 - 4562 Zone Tested Simpson sd.
 Anchor Length 25' Drill Pipe Run 4426 Mud Wt. 8.9
 Top Packer Depth 4532 Drill Collars Run 120 Vis 57
 Bottom Packer Depth 4537 Wt. Pipe Run Ø WL 9.6
 Total Depth 4562 Chlorides 6000 ppm System LCM 4#

Blow Description IF: Strong blow. BOB @ 12 min. No GTS
FSI: Weak blow, surf. - 3/4"
FE: Strong blow. BOB @ 13 min. No GTS.
FSI: Weak blow, surf. - 2"

Rec	Feet of	%gas	%oil	%water	%mud
<u>1050</u>	<u>GMCW</u>	<u>5</u>	<u>Ø</u>	<u>85</u>	<u>10</u>
Rec	Feet of	%gas	%oil	%water	%mud
Rec	Feet of	%gas	%oil	%water	%mud
Rec	Feet of	%gas	%oil	%water	%mud
Rec	Feet of	%gas	%oil	%water	%mud

Rec Total 1050 BHT 139 Gravity N/A API RW Ø 11 @ 80 °F Chlorides 6100 ppm

(A) Initial Hydrostatic 2245 Test 1250 T-On Location 1645
 (B) First Initial Flow 28 Jars _____ T-Started 1701
 (C) First Final Flow 218 Safety Joint 75 T-Open 1911
 (D) Initial Shut-In 1724 Circ Sub _____ T-Pulled 2227
 (E) Second Initial Flow 223 Hourly Standby _____ T-Out Ø 15
 (F) Second Final Flow 503 Mileage 94 145.70 Comments _____
 (G) Final Shut-In 1724 Sampler _____
 (H) Final Hydrostatic 2157 Straddle _____
 Ruined Shale Packer _____
 Ruined Packer _____

Initial Open 30 Extra Packer _____
 Initial Shut-In 45 Extra Recorder _____
 Final Flow 60 Day Standby _____
 Final Shut-In 60 Accessibility _____
 Sub Total 1470.70 MP/DST Disc't _____

Approved By _____ Our Representative Ryan Reynolds
 TriLOBITE TESTING INC. shall not be liable for damaged of any kind of the property or personnel of the one for whom a test is made, or for any loss suffered or sustained, directly or indirectly, through the use of its equipment, or its statements or opinion concerning the results of any test, tools lost or damaged in the hole shall be paid for at cost by the party for whom the test is made.