



## DRILL STEM TEST REPORT

Black Dahlia Oil and Gas Company

10/16S/13W/Barton

22120 Golf Club Drive  
Sun City West, Arizona  
85375+2078  
ATTN: W.C. Hafeman

Bitter #1

Job Ticket: 17058      DST#: 1  
Test Start: 2013.10.29 @ 22:10:00

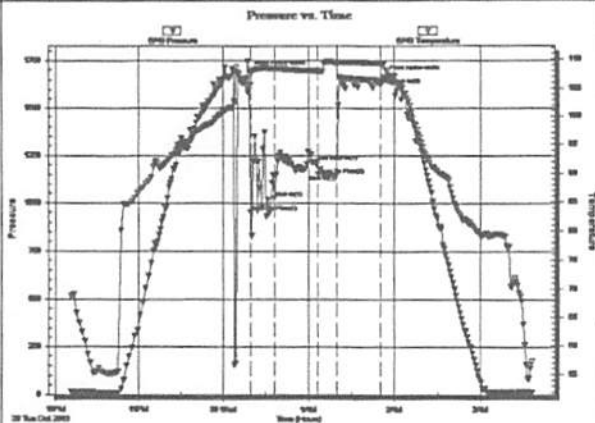
### GENERAL INFORMATION:

Formation: **Arbuckle**  
Deviated: No Whipstock:                      ft (KB)  
Time Tool Opened: 00:19:30  
Time Test Ended: 03:37:00  
Interval: **3368.00 ft (KB) To 3390.00 ft (KB) (TVD)**  
Total Depth: **3390.00 ft (KB) (TVD)**  
Hole Diameter: **7.80 inches** Hole Condition: Fair  
Test Type: Conventional Bottom Hole (Initial)  
Tester: Ken Swinney  
Unit No: 3325 Great Bend/43  
Reference Elevations: 1912.00 ft (KB)  
1900.00 ft (CF)  
KB to GR/CF: 12.00 ft

### Serial #: 6749

Press@RunDepth: 1151.14 psia @                      ft (KB)      Capacity: 5000.00 psia  
Start Date: 2013.10.29      End Date: 2013.10.30      Last Calib.: 2013.10.30  
Start Time: 22:11:00      End Time: 03:37:00      Time On Btm: 2013.10.30 @ 00:18:30  
Time Off Btm: 2013.10.30 @ 01:52:30

TEST COMMENT: 1ST Open      17 Minutes/Tool slide 4 feet/Blow at 3 inches after slide stop/Off and On surging  
1ST Shut In      30 Minutes/No blow back  
2ND Open      15 Minutes/No blow/Flush tool/Blow to 1/2 inch then stopped building/2ND flush/Off and on surge  
2ND Shut In      30 Minutes/No blow back



### PRESSURE SUMMARY

| Time (Min.) | Pressure (psia) | Temp (deg F) | Annotation           |
|-------------|-----------------|--------------|----------------------|
| 0           | 1690.08         | 104.53       | Initial Hydro-static |
| 1           | 950.94          | 105.52       | Open To Flow (1)     |
| 18          | 1026.28         | 108.23       | Shut-In(1)           |
| 48          | 1218.48         | 107.87       | End Shut-In(1)       |
| 48          | 1151.62         | 107.84       | Open To Flow (2)     |
| 61          | 1151.14         | 109.30       | Shut-In(2)           |
| 92          | 1621.96         | 109.20       | End Shut-In(2)       |
| 94          | 1663.63         | 109.18       | Final Hydro-static   |

### Recovery

| Length (ft) | Description                   | Volume (bbl) |
|-------------|-------------------------------|--------------|
| 105.00      | Mud with show of oil/Mud 100% | 1.47         |
|             |                               |              |
|             |                               |              |
|             |                               |              |
|             |                               |              |
|             |                               |              |

### Gas Rates

| Choke (inches) | Pressure (psia) | Gas Rate (Mcf/d) |
|----------------|-----------------|------------------|
|                |                 |                  |
|                |                 |                  |
|                |                 |                  |



# DRILL STEM TEST REPORT

Black Dahlia Oil and Gas Company

10/16S/13W/Barton

22120 Golf Club Drive  
Sun City West, Arizona  
85375+2078  
ATTN: W.C. Hafeman

Bitter #1

Job Ticket: 17059

DST#: 2

Test Start: 2013.10.30 @ 09:03:00

## GENERAL INFORMATION:

Formation: Arbuckle

Deviated: No Whipstock ft (KB)

Time Tool Opened: 10:27:30

Time Test Ended: 14:02:30

Test Type: Conventional Bottom Hole (Initial)

Tester: Ken Swinney

Unit No: 3325 Great Bend/43

Interval: 3365.00 ft (KB) To 3390.00 ft (KB) (TVD)

Reference Elevations: 1912.00 ft (KB)

Total Depth: 3390.00 ft (KB) (TVD)

1900.00 ft (CF)

Hole Diameter: 7.80 inches Hole Condition: Fair

KB to GR/CF: 12.00 ft

Serial #: 6749

Inside

Press@RunDepth: 836.66 psia @ 3386.00 ft (KB)

Capacity: 5000.00 psia

Start Date: 2013.10.30

End Date:

2013.10.30

Last Calib.:

2013.10.30

Start Time:

09:04:00

End Time:

14:02:30

Time On Btm:

2013.10.30 @ 10:27:00

Time Off Btm:

2013.10.30 @ 12:00:30

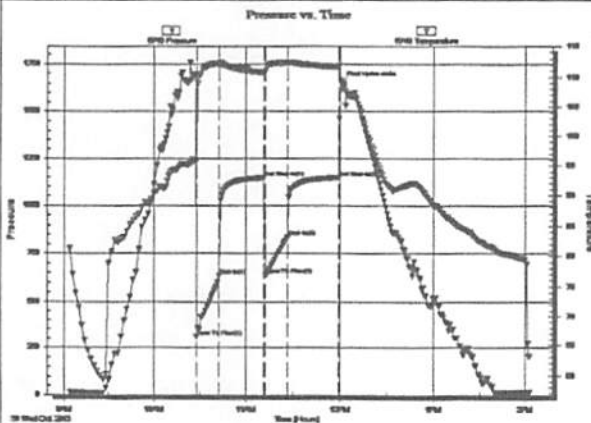
## TEST COMMENT:

1ST Open 15 Minutes/Strong blow/Blow built to bottom of bucket in 1 minutes

1ST Shut In 30 Minutes/Very slight surface blow back

2ND Open 15 Minutes/Strong blow/Blow built to bottom of bucket in 1 minute 15 seconds

2ND Shut In 30 Minutes/No blow back



## PRESSURE SUMMARY

| Time (Min.) | Pressure (psia) | Temp (deg F) | Annotation           |
|-------------|-----------------|--------------|----------------------|
| 0           | 1694.84         | 95.91        | Initial Hydro-static |
| 1           | 307.25          | 95.88        | Open To Flow (1)     |
| 16          | 631.64          | 112.28       | Shut-in(1)           |
| 45          | 1145.07         | 110.74       | End Shut-in(1)       |
| 46          | 637.83          | 110.93       | Open To Flow (2)     |
| 60          | 836.66          | 112.37       | Shut-in(2)           |
| 92          | 1145.73         | 111.73       | End Shut-in(2)       |
| 94          | 1648.72         | 109.43       | Final Hydro-static   |

## Recovery

| Length (ft) | Description                  | Volume (bbl) |
|-------------|------------------------------|--------------|
| 1721.00     | Slightly oil cut Muddy Water | 24.14        |
| 0.00        | Oil 1% Mud 10% Water 89%     | 0.00         |
|             |                              |              |
|             |                              |              |
|             |                              |              |

## Gas Rates

|  | Choke (inches) | Pressure (psia) | Gas Rate (Mcf/d) |
|--|----------------|-----------------|------------------|
|  |                |                 |                  |