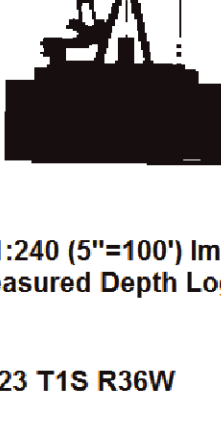


ERICKSON WELLSITE GEOLOGY



Scale 1:240 (5"=100') Imperial
Measured Depth Log

Well Name: Burk Trust 'A' #1-23
Location: N2 SW SW NW Sec 23 T15 R36W
License Number: 15-153-20942
Spud Date: 8/30/2013
Surface Coordinates: 2225' FNL & 330' FWL
Region: Rawlins County, KS
Drilling Completed: 9/6/2013

Bottom Hole Coordinates: 3220
Ground Elevation (ft): 3220
Logged Interval (ft): 3500 To: TD
Formation:
Type of Drilling Fluid: Chemical Mud
K.B. Elevation (ft): 3225
Total Depth (ft): 4520

Printed by MUD.LOG from WellSight Systems 1-800-447-1534 www.WellSight.com

OPERATOR

Company: Murfin Drilling Co., Inc.
Address: 250 N Water, Suite 300
Wichita, KS 67202

GEOLOGIST

Name: Clayton Erickson
Company: Erickson WellSite Geology
Address: 402 Palmer Street
P.O. Box 294
Loomis, NE 68958

DSTs

NO DSTs

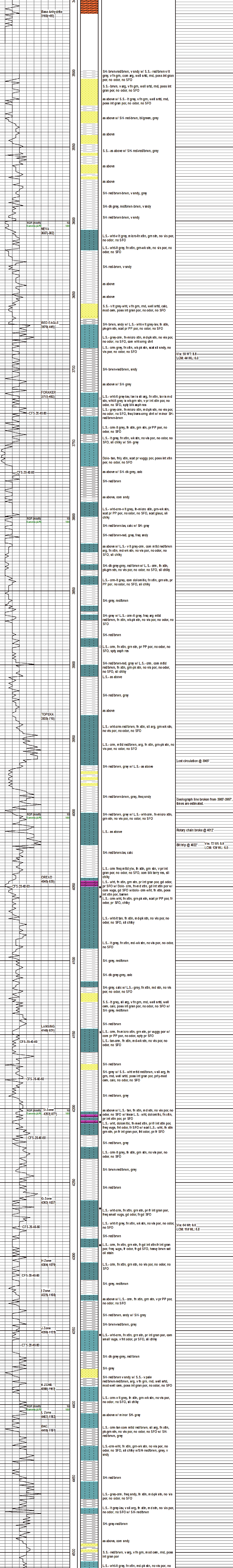
COMMENTS

FORMATION TOPS

Log Tops	Sample tops
Anhydrite	3127(+98)
Base Anhy	3160(+65)
NEVA	3607(-382)
RED EAGLE	3670(-445)
FORAKER	3717(-492)
TOPEKA	3935(-710)
OREAD	4045(-820)
LANSING	4146(-921)
BKC	4416(-1191)
TD	4520(-1295)

ROCK TYPES	
Anhy	Clyst
Bent	Carb. shale
Brec	Arkose
Cht	Dol
Gyp	Ignre
Lnst	Meta
Mrfst	Salt
Shale	Shcol
Shgy	Silst
Ss	Ss
Till	Till

OTHER SYMBOLS	
OIL SHOW Even	Spotted Quces
Dead	INTERVAL Dst



Dev: 2 deg