



TRILOBITE TESTING, INC

DRILL STEM TEST REPORT

Shakespeare Oil Company

11-13s-32w Logan Co, KS

202 West Main ST
Salem IL, 62881

Teeter #2-11

Job Ticket: 54583

DST#: 1

ATTN: Tim Priest

Test Start: 2013.12.05 @ 05:35:00

GENERAL INFORMATION:

Formation: **Kansas City "K" Zone**

Deviated: No Whipstock: ft (KB)

Time Tool Opened: 10:11:30

Time Test Ended: 16:03:15

Test Type: Conventional Bottom Hole (Initial)

Tester: Jace McKinney

Unit No: 46

Interval: 4240.00 ft (KB) To 4270.00 ft (KB) (TVD)

Total Depth: 4270.00 ft (KB) (TVD)

Hole Diameter: 7.88 inches Hole Condition: Poor

Reference Elevations: 2993.00 ft (KB)

2983.00 ft (CF)

KB to GR/CF: 10.00 ft

Serial #: 8675

Inside

Press@RunDepth: 62.50 psig @ 4245.00 ft (KB)

Start Date: 2013.12.05

End Date:

2013.12.05

Start Time: 05:35:15

End Time:

16:03:15

Capacity: 8000.00 psig

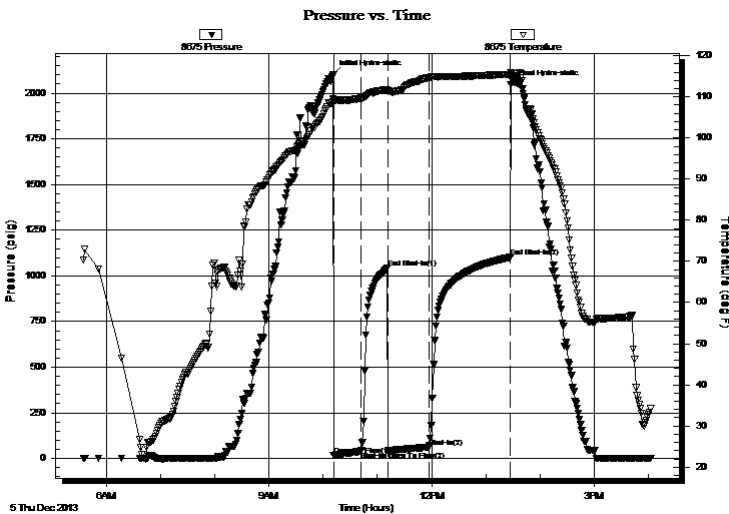
Last Calib.: 2013.12.05

Time On Btm: 2013.12.05 @ 10:11:15

Time Off Btm: 2013.12.05 @ 13:27:30

TEST COMMENT: Built to 3" blow
No return blow
Built to 2 3/4" blow
Weak surface return blow

PRESSURE SUMMARY



Time (Min.)	Pressure (psig)	Temp (deg F)	Annotation
0	2102.93	109.65	Initial Hydro-static
1	16.16	108.86	Open To Flow (1)
31	38.71	109.64	Shut-In(1)
61	1041.60	111.76	End Shut-In(1)
61	42.27	111.43	Open To Flow (2)
106	62.50	114.71	Shut-In(2)
196	1101.99	115.48	End Shut-In(2)
197	2045.51	115.95	Final Hydro-static

Recovery

Length (ft)	Description	Volume (bbl)
30.00	100% Mud w ith oil scum on top	0.15
60.00	w cm 35%W 65%M w ith oil spots	0.30

Gas Rates

	Choke (inches)	Pressure (psig)	Gas Rate (Mcf/d)



**TRILOBITE
TESTING, INC**

DRILL STEM TEST REPORT

FLUID SUMMARY

Shakespeare Oil Company

11-13s-32w Logan Co, KS

202 West Main ST
Salem IL, 62881

Teeter #2-11

Job Ticket: 54583

DST#: 1

ATTN: Tim Priest

Test Start: 2013.12.05 @ 05:35:00

Mud and Cushion Information

Mud Type: Gel Chem

Cushion Type:

Oil API:

deg API

Mud Weight: 9.00 lb/gal

Cushion Length:

ft

Water Salinity:

20000 ppm

Viscosity: 53.00 sec/qt

Cushion Volume:

bbbl

Water Loss: 8.79 in³

Gas Cushion Type:

Resistivity: ohm.m

Gas Cushion Pressure:

psig

Salinity: 2500.00 ppm

Filter Cake: 1.00 inches

Recovery Information

Recovery Table

Length ft	Description	Volume bbbl
30.00	100% Mud w ith oil scum on top	0.148
60.00	w cm 35%W 65%M w ith oil spots	0.295

Total Length: 90.00 ft Total Volume: 0.443 bbl

Num Fluid Samples: 0

Num Gas Bombs: 0

Serial #:

Laboratory Name:

Laboratory Location:

Recovery Comments: RW: .75 @ 20 F = 20,000

Serial #: 8675

Inside

Shakespeare Oil Company

Teeler #2-11

DST Test Number: 1

