

# Robert D. Hendrix

## Petroleum Geologist

### GEOLOGIST'S REPORT

#### DRILLING TIME AND SAMPLE LOG

COMPANY **Murfin Drilling Co. Inc.**

LEASE **Walter #2-1**

FIELD **KB 3117**

LOCATION **3307nl & 13607wl**

SEC **1** TWPSP **1S** RGE **36W**

COUNTY **Rawlins** STATE **Kansas**

CONTRACTOR **Murfin Drilling Co. Inc. rig #14**

SPUD **9/2/2013** COMP **9/11/2013**

RTD **4:43:32** LTD **4:43:07**

MUD UP **3:30:07** TYPE MUD **Chemical**

SAMPLES SAVED FROM **3:43:07 TO 4:43:32**

DRILLING TIME KEPT FROM **3:43:07 TO 4:43:32**

SAMPLES EXAMINED FROM **3:43:07 TO 4:43:32**

GEOLOGICAL SUPERVISION FROM **3:45:57**

GEOLOGIST ON WELL **Robert D. Hendrix**

FORMER SUPERVISOR **Robert D. Hendrix**

FORMER LOGGERS **Robert D. Hendrix**

FORMER DRILLERS **Robert D. Hendrix**

FORMER MUD LOGGERS **Robert D. Hendrix**

FORMER RIG HANDS **Robert D. Hendrix**

FORMER RIG HANDS **Robert D. Hendrix**

FORMER RIG HANDS **Robert D. Hendrix**

FORMER RIG HANDS **Robert D. Hendrix**

FORMER RIG HANDS **Robert D. Hendrix**

ELEVATIONS

KB 3117

DF

GL 3107

Measurements Are All From Kelly Building

CASING

CONDUCTOR

SURFACE 8-5/8" @ 268'

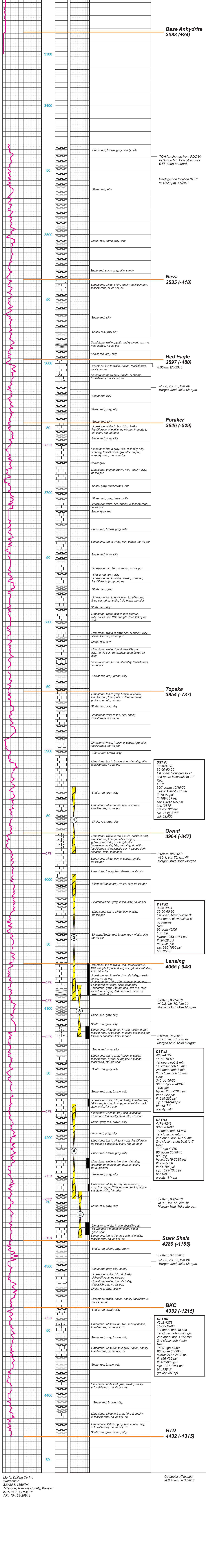
PRODUCTION 5-1/2" @ 4429'

FORMATION TOPS

Neve	3047 (-70)	3051 (-66)
Foraker	3535 (-118)	3535 (-118)
Topoka	3644 (-227)	3646 (-229)
Oread	3852 (-735)	3854 (-737)
Lansing	3962 (-845)	3964 (-847)
Stark Shale	4065 (-949)	4065 (-949)
BKC	4280 (-1163)	4280 (-1163)
	4331 (-1214)	4332 (-1215)

AP# 15-153-20944

REMARKS:



Murfin Drilling Co Inc  
Walter #2-1  
3307nl & 13607wl  
1-1s-36w, Rawlins County, Kansas  
KB-3117, GL=3107  
AP# 15-153-20944

Geologist off location  
at 3:45am, 9/11/2013