



DRILL STEM TEST REPORT

Prepared For: **Shelby Resources LLC**

2717 Canal BLVD.
Suite C
Hays Ks, 67601

ATTN: Jeremy Schwartz

Nancy #2-17

17/17s/13w/Barton

Start Date: 2013.10.22 @ 20:50:00

End Date: 2013.10.23 @ 04:51:30

Job Ticket #: 18507 DST #: 2

Superior Testers Enterprises LLC
PO Box 138 Great Bend KS 67530
1-800-792-6902

Printed: 2013.10.23 @ 05:10:11



DRILL STEM TEST REPORT

Shelby Resources LLC
 2717 Canal BLVD.
 Suite C
 Hays Ks, 67601
 ATTN: Jeremy Schwartz

17/17s/13w/Barton
Nancy #2-17
 Job Ticket: 18507 **DST#: 2**
 Test Start: 2013.10.22 @ 20:50:00

GENERAL INFORMATION:

Formation: **LKC "F-G"**
 Deviated: No Whipstock: ft (KB)
 Test Type: Conventional Bottom Hole (Initial)
 Time Tool Opened: 22:38:30
 Tester: Shane Konzem
 Time Test Ended: 04:51:30
 Unit No: 3330/30/Great Bend
Interval: 3297.00 ft (KB) To 3321.00 ft (KB) (TVD)
 Reference Elevations: 1997.00 ft (KB)
 Total Depth: 3321.00 ft (KB) (TVD) 1984.00 ft (CF)
 Hole Diameter: 7.88 inches Hole Condition: Poor KB to GR/CF: 13.00 ft

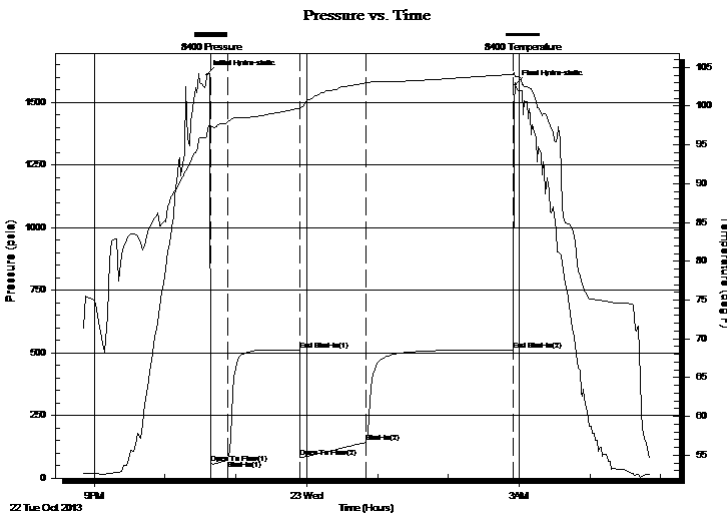
Serial #: 8400

Inside

Press @ Run Depth: 142.30 psia @ 3317.00 ft (KB) Capacity: 5000.00 psia
 Start Date: 2013.10.22 End Date: 2013.10.23 Last Calib.: 2013.10.23
 Start Time: 20:50:00 End Time: 04:51:30 Time On Btm: 2013.10.22 @ 22:35:30
 Time Off Btm: 2013.10.23 @ 02:57:00

TEST COMMENT: 1st Open/ 15 Minutes. Good blow built to bottom of 5 gallon bucket in 9 minutes.
 1st Shut In/ 60 Minutes. No blow back.
 2nd Open/ 60 Minutes. Good blow built to bottom of 5 gallon bucket in 10 minutes 30 seconds.
 2nd Shut In/ 120 Minutes. No blow back

PRESSURE SUMMARY



Time (Min.)	Pressure (psia)	Temp (deg F)	Annotation
0	1609.68	96.02	Initial Hydro-static
3	57.77	97.32	Open To Flow (1)
18	71.64	97.96	Shut-In(1)
79	512.61	99.71	End Shut-In(1)
79	83.65	99.57	Open To Flow (2)
135	142.30	103.03	Shut-In(2)
260	510.83	104.10	End Shut-In(2)
262	1569.59	103.76	Final Hydro-static

Recovery

Length (ft)	Description	Volume (bbl)
0.00	630 feet 100% gas.	0.00
437.00	100% clean gassy oil	3.66
63.00	5% Oil, 5% mud, 90% w ater.	0.88
0.00	Chloride recov. 29000 ppm	0.00
0.00	Resist recov. .22 at 40%	0.00
0.00	Oil gravity corrected w as 41.	0.00

Gas Rates

Choke (inches)	Pressure (psia)	Gas Rate (Mcf/d)



DRILL STEM TEST REPORT

Shelby Resources LLC
 2717 Canal BLVD.
 Suite C
 Hays Ks, 67601
 ATTN: Jeremy Schwartz

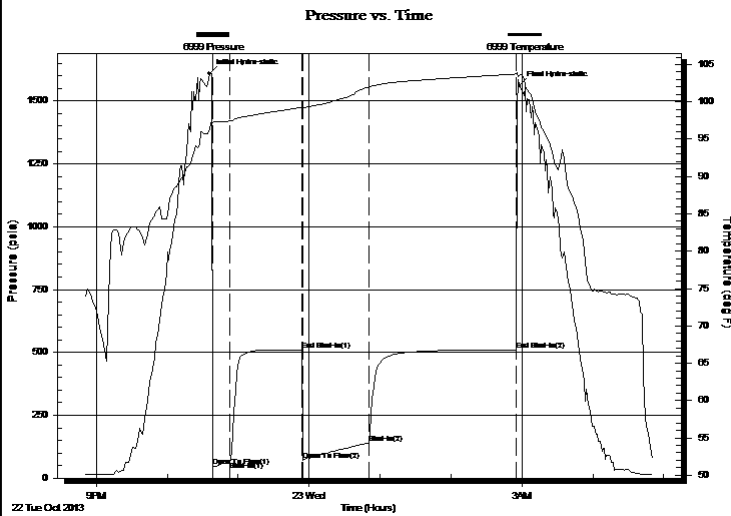
17/17s/13w/Barton
Nancy #2-17
 Job Ticket: 18507 **DST#: 2**
 Test Start: 2013.10.22 @ 20:50:00

GENERAL INFORMATION:

Formation: **LKC "F-G"**
 Deviated: No Whipstock: ft (KB)
 Test Type: Conventional Bottom Hole (Initial)
 Time Tool Opened: 22:38:30 Tester: Shane Konzem
 Time Test Ended: 04:51:30 Unit No: 3330/30/Great Bend
 Interval: **3297.00 ft (KB) To 3321.00 ft (KB) (TVD)** Reference Elevations: 1997.00 ft (KB)
 Total Depth: 3321.00 ft (KB) (TVD) 1984.00 ft (CF)
 Hole Diameter: 7.88 inches Hole Condition: Poor KB to GR/CF: 13.00 ft

Serial #: 6999 Outside
 Press @ Run Depth: 508.69 psia @ 3318.00 ft (KB) Capacity: 5000.00 psia
 Start Date: 2013.10.22 End Date: 2013.10.23 Last Calib.: 2013.10.23
 Start Time: 20:50:00 End Time: 04:51:00 Time On Btm: 2013.10.22 @ 22:35:30
 Time Off Btm: 2013.10.23 @ 02:58:00

TEST COMMENT: 1st Open/ 15 Minutes. Good blow built to bottom of 5 gallon bucket in 9 minutes.
 1st Shut In/ 60 Minutes. No blow back.
 2nd Open/ 60 Minutes. Good blow built to bottom of 5 gallon bucket in 10 minutes 30 seconds.
 2nd Shut In/ 120 Minutes. No blow back



PRESSURE SUMMARY

Time (Min.)	Pressure (psia)	Temp (deg F)	Annotation
0	1608.97	96.40	Initial Hydro-static
3	45.18	97.25	Open To Flow (1)
18	66.92	97.43	Shut-In(1)
79	510.06	99.28	End Shut-In(1)
79	71.75	99.22	Open To Flow (2)
135	139.91	101.99	Shut-In(2)
260	508.69	103.75	End Shut-In(2)
263	1560.82	103.59	Final Hydro-static

Recovery

Length (ft)	Description	Volume (bbl)
0.00	630 feet 100% gas.	0.00
437.00	100% clean gassy oil	3.66
63.00	5% Oil, 5% mud, 90% w ater.	0.88
0.00	Chloride recov. 29000 ppm	0.00
0.00	Resist recov. .22 at 40%	0.00
0.00	Oil gravity corrected w as 41.	0.00

Gas Rates

	Choke (inches)	Pressure (psia)	Gas Rate (Mcf/d)



DRILL STEM TEST REPORT

TOOL DIAGRAM

Shelby Resources LLC

17/17s/13w/Barton

2717 Canal BLVD.
Suite C
Hays Ks, 67601
ATTN: Jeremy Schwartz

Nancy #2-17

Job Ticket: 18507

DST#: 2

Test Start: 2013.10.22 @ 20:50:00

Tool Information

Drill Pipe:	Length: 3028.00 ft	Diameter: 3.80 inches	Volume: 42.47 bbl	Tool Weight: 2000.00 lb
Heavy Wt. Pipe:	Length: 0.00 ft	Diameter: 0.00 inches	Volume: 0.00 bbl	Weight set on Packer: 25000.00 lb
Drill Collar:	Length: 270.87 ft	Diameter: 2.25 inches	Volume: 1.33 bbl	Weight to Pull Loose: 86000.00 lb
			<u>Total Volume: 43.80 bbl</u>	Tool Chased 0.00 ft
Drill Pipe Above KB:	30.87 ft			String Weight: Initial 70000.00 lb
Depth to Top Packer:	3297.00 ft			Final 72000.00 lb
Depth to Bottom Packer:	ft			
Interval between Packers:	24.00 ft			
Tool Length:	53.00 ft			
Number of Packers:	2	Diameter: 6.75 inches		

Tool Comments:

Tool Description	Length (ft)	Serial No.	Position	Depth (ft)	Accum. Lengths
------------------	-------------	------------	----------	------------	----------------

Change Over Sub	1.00			3269.00	
Shut-In Tool	5.00			3274.00	
Hydroic Tool	5.00			3279.00	
Jars	6.00			3285.00	
Safety Joint	2.00			3287.00	
Packer	5.00			3292.00	29.00 Bottom Of Top Packer
Packer	5.00			3297.00	
Perforations	19.00			3316.00	
Recorder	1.00	8400	Inside	3317.00	
Recorder	1.00	6999	Outside	3318.00	
Bullnose	3.00			3321.00	24.00 Bottom Packers & Anchor

Total Tool Length: 53.00



DRILL STEM TEST REPORT

FLUID SUMMARY

Shelby Resources LLC
 2717 Canal BLVD.
 Suite C
 Hays Ks, 67601
 ATTN: Jeremy Schwartz

17/17s/13w/Barton
Nancy #2-17
 Job Ticket: 18507 **DST#: 2**
 Test Start: 2013.10.22 @ 20:50:00

Mud and Cushion Information

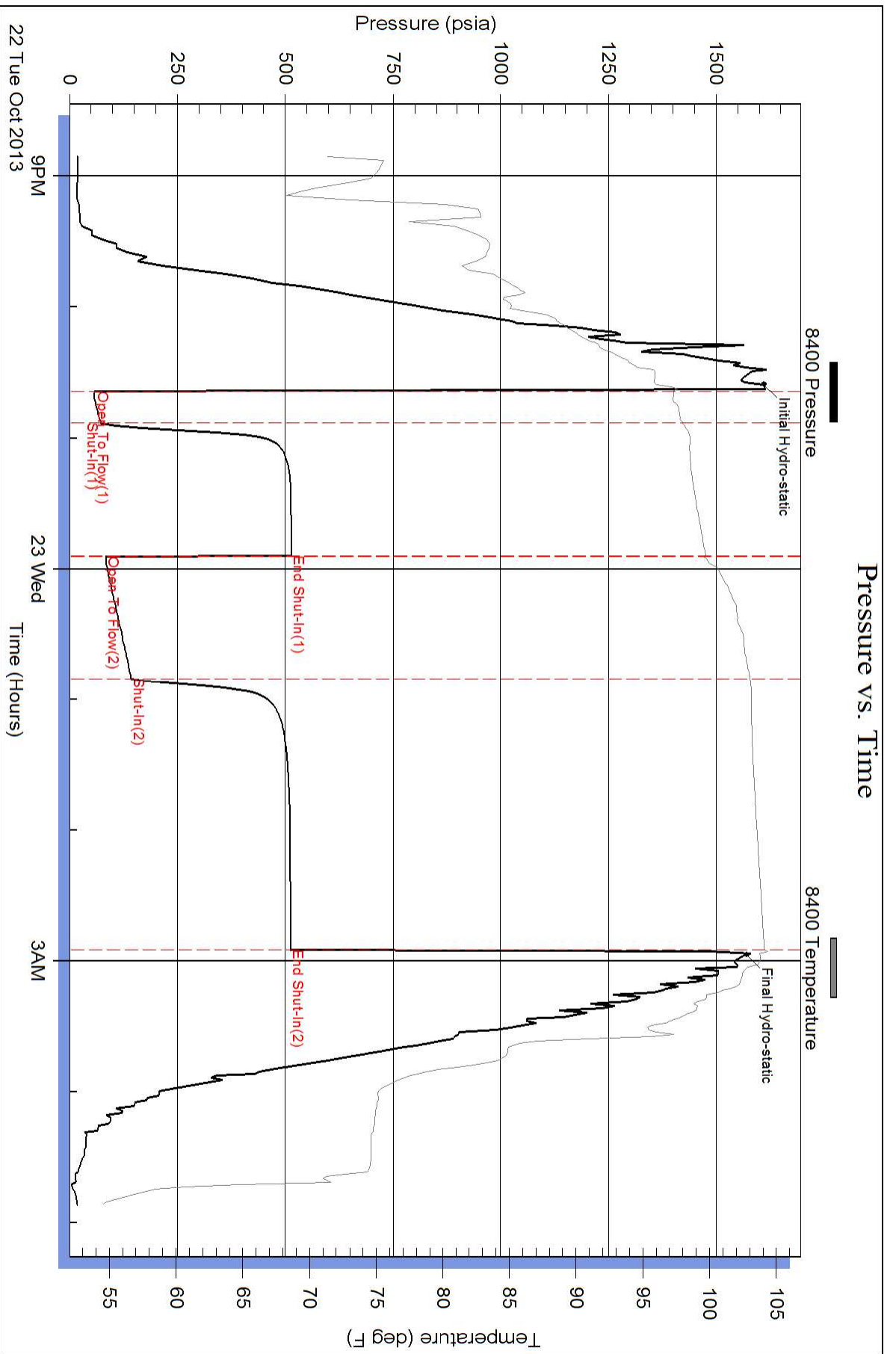
Mud Type: Gel Chem	Cushion Type:	Oil API:	deg API
Mud Weight: 9.00 lb/gal	Cushion Length: ft	Water Salinity:	ppm
Viscosity: 51.00 sec/qt	Cushion Volume: bbl		
Water Loss: 8.79 in ³	Gas Cushion Type:		
Resistivity: ohm.m	Gas Cushion Pressure: psia		
Salinity: 5900.00 ppm			
Filter Cake: 1.00 inches			

Recovery Information

Recovery Table

Length ft	Description	Volume bbl
0.00	630 feet 100% gas.	0.000
437.00	100% clean gassy oil	3.662
63.00	5% Oil, 5% mud, 90% w ater.	0.884
0.00	Chloride recov. 29000 ppm	0.000
0.00	Resist recov. .22 at 40%	0.000
0.00	Oil gravity corrected w as 41.	0.000

Total Length: 500.00 ft Total Volume: 4.546 bbl
 Num Fluid Samples: 0 Num Gas Bombs: 0 Serial #:
 Laboratory Name: Laboratory Location:
 Recovery Comments:



Pressure vs. Time

