



## DRILL STEM TEST REPORT

Prepared For: **F.G Holl Company L.L.C**

9431 E Central Ste 100 Wichita KS  
67206+2563

ATTN: Ryan Greenbaum

### **Panning "A" #1-17**

### **17-20s-13w Barton**

Start Date: 2013.11.21 @ 15:20:00

End Date: 2013.11.21 @ 21:38:00

Job Ticket #: 18524                      DST #: 4

Superior Testers Enterprises LLC  
PO Box 138 Great Bend KS 67530  
1-800-792-6902

Printed: 2013.11.21 @ 22:31:58



# DRILL STEM TEST REPORT

F.G Holl Company L.L.C

**17-20s-13w Barton**

9431 E Central Ste 100 Wichita KS 67206+2563

**Panning "A" #1-17**

ATTN: Ryan Greenbaum

Job Ticket: 18524

**DST#: 4**

Test Start: 2013.11.21 @ 15:20:00

## GENERAL INFORMATION:

Formation: **LKC " J "**

Deviated: No Whipstock: ft (KB)

Time Tool Opened: 16:58:30

Time Test Ended: 21:38:00

Test Type: Conventional Bottom Hole (Initial)

Tester: Jared Scheck

Unit No: 3330-10-Great Bend

**Interval: 3390.00 ft (KB) To 3414.00 ft (KB) (TVD)**

Reference Elevations: 1879.00 ft (KB)

Total Depth: 3414.00 ft (KB) (TVD)

1871.00 ft (CF)

Hole Diameter: 7.88 inches Hole Condition: Fair

KB to GR/CF: 8.00 ft

**Serial #: 6663 Inside**

Press @ RunDepth: 43.80 psia @ 3410.00 ft (KB)

Capacity: 5000.00 psia

Start Date: 2013.11.21

End Date:

2013.11.21

Last Calib.:

2013.11.21

Start Time: 15:20:00

End Time:

21:38:00

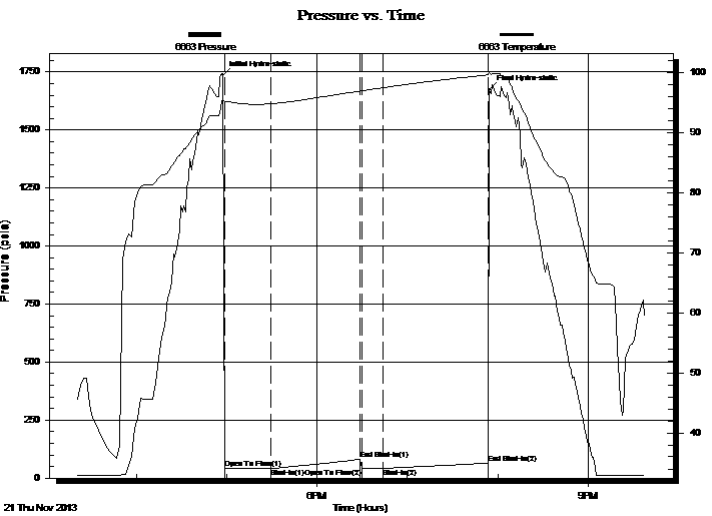
Time On Btm:

2013.11.21 @ 16:57:30

Time Off Btm:

2013.11.21 @ 19:54:30

**TEST COMMENT:** 1st OPeing 30 Minutes-Weak blow built 1/2 inch into bucket in 30 minutes  
 1st Shut-in 60 Minutes-No blow back  
 2nd Opening 15 Minutes-Weak surge did not build  
 2nd Shut-in 60 Minutes-No blow back



## PRESSURE SUMMARY

Time (Min.)	Pressure (psia)	Temp (deg F)	Annotation
0	1735.94	95.47	Initial Hydro-static
1	41.20	95.27	Open To Flow (1)
32	43.29	94.82	Shut-In(1)
91	81.98	96.95	End Shut-In(1)
92	43.82	96.98	Open To Flow (2)
106	43.80	97.49	Shut-In(2)
176	65.18	99.65	End Shut-In(2)
177	1673.66	100.05	Final Hydro-static

## Recovery

Length (ft)	Description	Volume (bbl)
5.00	oil cut mud 5%oil 95%mud	0.07

## Gas Rates

Choke (inches)	Pressure (psia)	Gas Rate (Mcf/d)



# DRILL STEM TEST REPORT

F.G Holl Company L.L.C

**17-20s-13w Barton**

9431 E Central Ste 100 Wichita KS 67206+2563

**Panning "A" #1-17**

ATTN: Ryan Greenbaum

Job Ticket: 18524

**DST#: 4**

Test Start: 2013.11.21 @ 15:20:00

## GENERAL INFORMATION:

Formation: **LKC " J "**

Deviated: No Whipstock: ft (KB)

Time Tool Opened: 16:58:30

Time Test Ended: 21:38:00

Test Type: Conventional Bottom Hole (Initial)

Tester: Jared Scheck

Unit No: 3330-10-Great Bend

**Interval: 3390.00 ft (KB) To 3414.00 ft (KB) (TVD)**

Reference Elevations: 1879.00 ft (KB)

Total Depth: 3414.00 ft (KB) (TVD)

1871.00 ft (CF)

Hole Diameter: 7.88 inches Hole Condition: Fair

KB to GR/CF: 8.00 ft

**Serial #: 6748 Outside**

Press @ RunDepth: 70.22 psia @ 3411.00 ft (KB)

Capacity: 5000.00 psia

Start Date: 2013.11.21

End Date:

2013.11.21

Last Calib.:

2013.11.21

Start Time: 15:20:00

End Time:

21:38:30

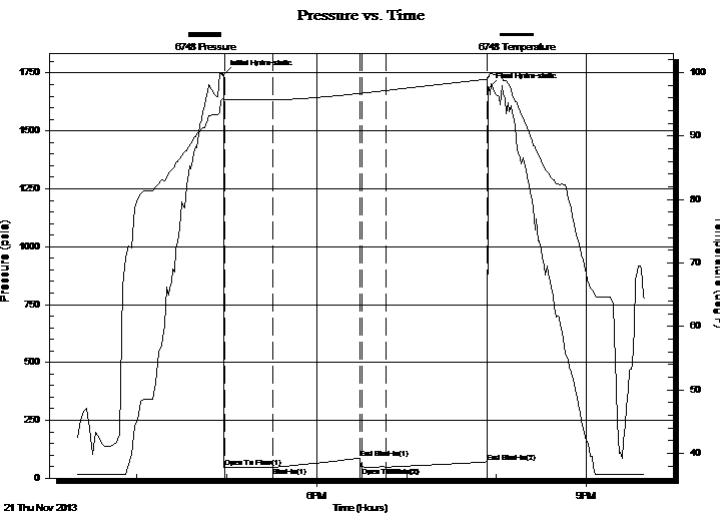
Time On Btm:

2013.11.21 @ 16:58:00

Time Off Btm:

2013.11.21 @ 19:55:00

**TEST COMMENT:** 1st OPeing 30 Minutes-Weak blow built 1/2 inch into bucket in 30 minutes  
 1st Shut-in 60 Minutes-No blow back  
 2nd Opening 15 Minutes-Weak surge did not build  
 2nd Shut-in 60 Minutes-No blow back



## PRESSURE SUMMARY

Time (Min.)	Pressure (psia)	Temp (deg F)	Annotation
0	1742.43	95.96	Initial Hydro-static
1	45.48	95.73	Open To Flow (1)
33	47.44	95.70	Shut-In(1)
91	86.64	96.73	End Shut-In(1)
93	48.63	96.76	Open To Flow (2)
109	48.54	97.18	Shut-In(2)
176	70.22	98.96	End Shut-In(2)
177	1687.14	99.35	Final Hydro-static

## Recovery

Length (ft)	Description	Volume (bbl)
5.00	oil cut mud 5%oil 95%mud	0.07

## Gas Rates

Choke (inches)	Pressure (psia)	Gas Rate (Mcf/d)



# DRILL STEM TEST REPORT

**TOOL DIAGRAM**

F.G Holl Company L.L.C

**17-20s-13w Barton**

9431 E Central Ste 100 Wichita KS 67206+2563

**Panning "A" #1-17**

Job Ticket: 18524

**DST#: 4**

ATTN: Ryan Greenbaum

Test Start: 2013.11.21 @ 15:20:00

## Tool Information

Drill Pipe:	Length: 3371.00 ft	Diameter: 3.80 inches	Volume: 47.29 bbl	Tool Weight: 1000.00 lb
Heavy Wt. Pipe:	Length: 0.00 ft	Diameter: 0.00 inches	Volume: 0.00 bbl	Weight set on Packer: 20000.00 lb
Drill Collar:	Length: 0.00 ft	Diameter: 0.00 inches	Volume: 0.00 bbl	Weight to Pull Loose: 67000.00 lb
			<u>Total Volume: 47.29 bbl</u>	Tool Chased 0.00 ft
Drill Pipe Above KB:	10.00 ft			String Weight: Initial 47000.00 lb
Depth to Top Packer:	3390.00 ft			Final 47000.00 lb
Depth to Bottom Packer:	ft			
Interval between Packers:	24.00 ft			
Tool Length:	53.00 ft			
Number of Packers:	2	Diameter: 6.75 inches		

Tool Comments:

Tool Description	Length (ft)	Serial No.	Position	Depth (ft)	Accum. Lengths
Change Over Sub	1.00			3362.00	
Shut-In Tool	5.00			3367.00	
Hydroic Tool	5.00			3372.00	
Jars	6.00			3378.00	
Safety Joint	2.00			3380.00	
Packer	5.00			3385.00	29.00 Bottom Of Top Packer
Packer	5.00			3390.00	
Perforations	19.00			3409.00	
Recorder	1.00	6663	Inside	3410.00	
Recorder	1.00	6748	Outside	3411.00	
Bullnose	3.00			3414.00	24.00 Bottom Packers & Anchor

**Total Tool Length: 53.00**



# DRILL STEM TEST REPORT

## FLUID SUMMARY

F.G Holl Company L.L.C

**17-20s-13w Barton**

9431 E Central Ste 100 Wichita KS 67206+2563

**Panning "A" #1-17**

Job Ticket: 18524

**DST#: 4**

ATTN: Ryan Greenbaum

Test Start: 2013.11.21 @ 15:20:00

### Mud and Cushion Information

Mud Type: Gel Chem  
 Mud Weight: 9.00 lb/gal  
 Viscosity: 46.00 sec/qt  
 Water Loss: 8.80 in<sup>3</sup>  
 Resistivity: ohm.m  
 Salinity: 7300.00 ppm  
 Filter Cake: 1.00 inches

Cushion Type:  
 Cushion Length: ft  
 Cushion Volume: bbl  
 Gas Cushion Type:  
 Gas Cushion Pressure: psia

Oil API: deg API  
 Water Salinity: ppm

### Recovery Information

Recovery Table

Length ft	Description	Volume bbl
5.00	oil cut mud 5%oil 95%mud	0.070

Total Length: 5.00 ft      Total Volume: 0.070 bbl

Num Fluid Samples: 0

Num Gas Bombs: 0

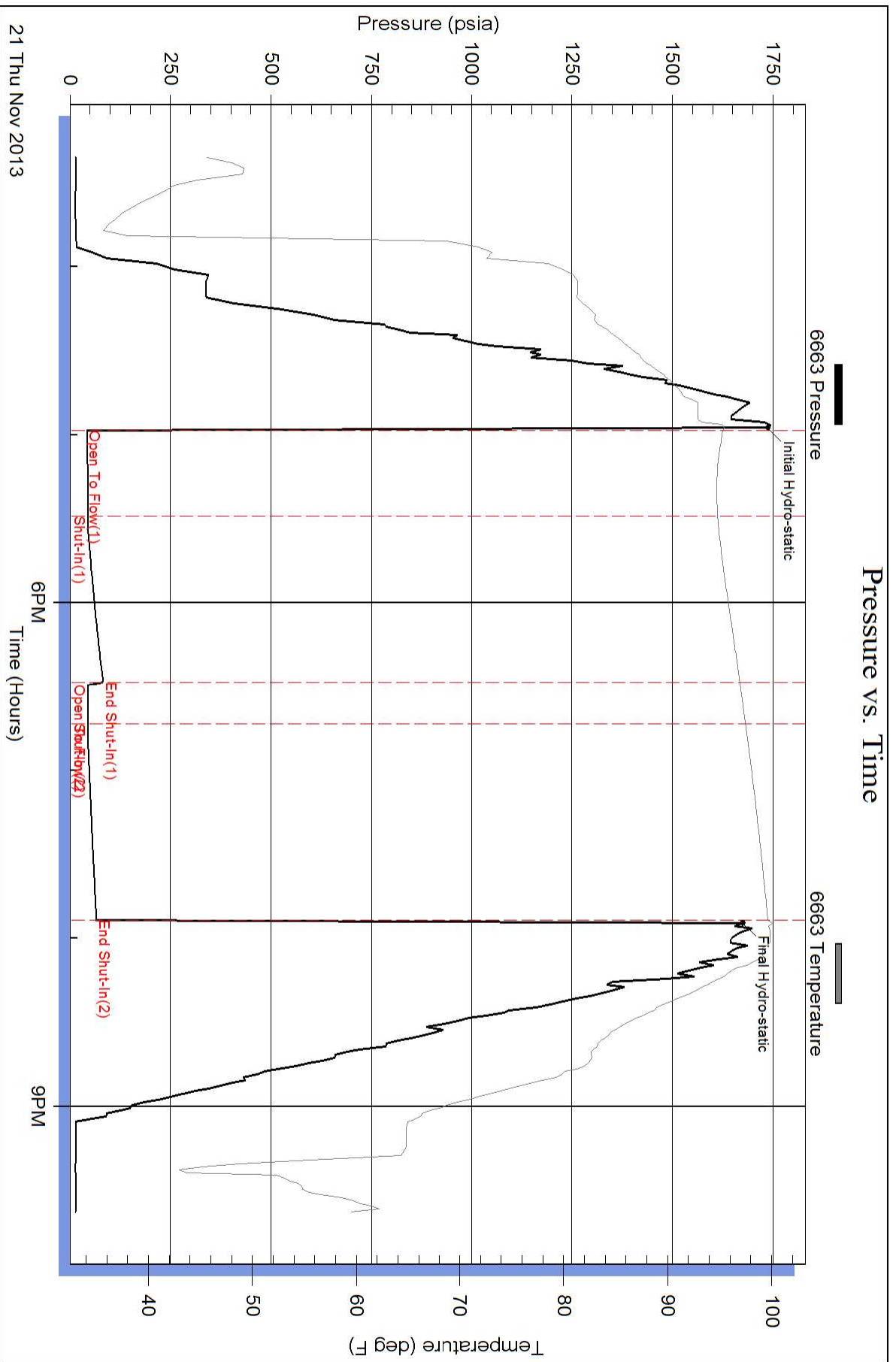
Serial #:

Laboratory Name:

Laboratory Location:

Recovery Comments:

### Pressure vs. Time



### Pressure vs. Time

