

# GEOLOGIST'S REPORT

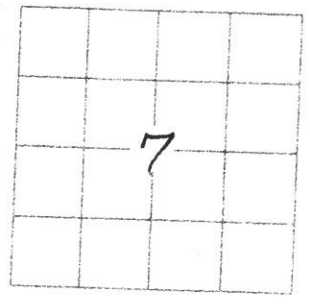
DRILLING TIME AND SAMPLE LOG

COMPANY TRANS PACIFIC Oil Corp  
 LEASE Graham Family Trust A #2-7  
 FIELD \_\_\_\_\_  
 LOCATION 1980' FSL 330' FWL  
 SEC 7 TWSP 14S RGE 27W  
 COUNTY Govc STATE Ks  
 CONTRACTOR DUKE Rig #4  
 SPUD 11/29/13 COMP 12/7/13  
 RTD 4500 LTD 4500  
 MUD UP 3500 TYPE MUD Chem

ELEVATIONS  
 KB 2563  
 DF \_\_\_\_\_  
 GL 2554  
 Measurements Are All  
 From KB  
 CASING  
 SURFACE 8 7/8" @ 210  
 PRODUCTION \_\_\_\_\_  
 ELECTRICAL SURVEYS  
Comp-D  
Dual, Micro

SAMPLES SAVED FROM 3600 TO RTD  
 DRILLING TIME KEPT FROM 3500 TO RTD  
 SAMPLES EXAMINED FROM 3600 TO RTD  
 GEOLOGICAL SUPERVISION FROM 3500 TO RTD  
 GEOLOGIST ON WELL Michael R. Kidwell

FORMATION TOPS	LOG	SAMPLES
Anhydrite	2006 +557	
B/Anhy	2017 +516	
Heebner	3725 -1162	3725
Lansing	3764 -1201	3764
Stark	3999 -1436	3998
Marmaton	4071 -1508	4070
Labele	4262 -1699	4258
Miss Dolo	4405 -1842	4400

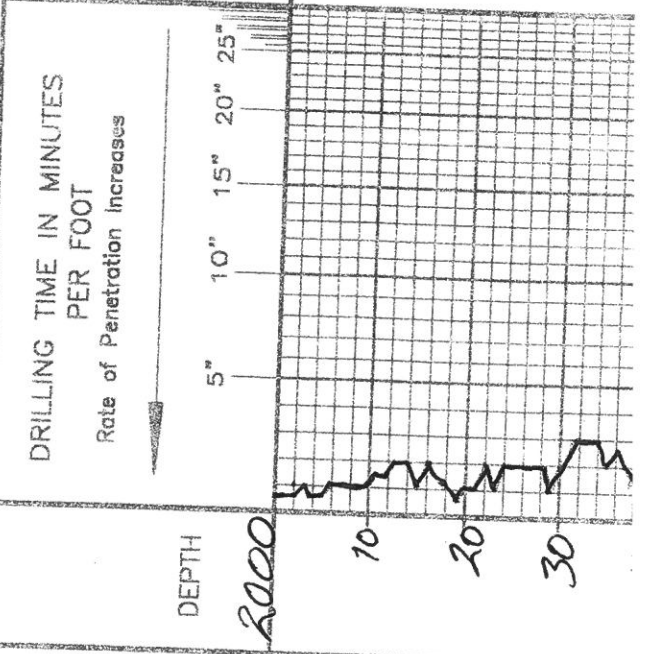


REMARKS

## LEGEND

- Anhydrite
- Salt
- Sandstone
- Shale
- Carb sh
- Limestone
- Cal.Lime
- Chert
- Dolomite

SCALE " = 100'



LITHOLOGY	SAMPLE DESCRIPTIONS	REMARKS

40  
50  
60  
70

3500  
10  
20  
30  
40  
50  
60  
70  
80  
90

3600  
10  
20  
30  
40  
50  
60  
70  
80  
90  
3700  
10

LS -  $\frac{cm}{xi} \tan \frac{vi}{fn} \times \frac{fn}{xi} - \frac{cm}{xi} \tan \frac{vi}{fn} \times \frac{fn}{xi}$

LS -  $\frac{cm}{xi} \tan \frac{vi}{fn} \times \frac{fn}{xi}$

LS -  $\frac{cm}{xi} \tan \frac{vi}{fn} \times \frac{fn}{xi}$

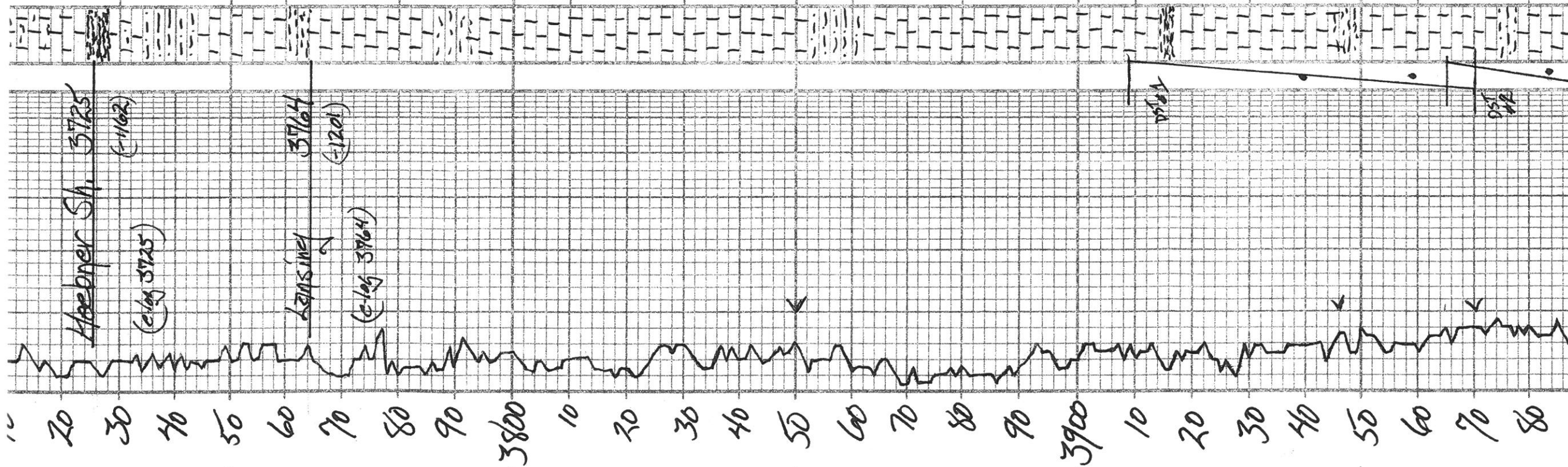
LS -  $\frac{cm}{xi} \tan \frac{vi}{fn} \times \frac{fn}{xi}$

LS -  $\frac{cm}{xi} \tan \frac{vi}{fn} \times \frac{fn}{xi}$

LS -  $\frac{cm}{xi} \tan \frac{vi}{fn} \times \frac{fn}{xi}$

LS -  $\frac{cm}{xi} \tan \frac{vi}{fn} \times \frac{fn}{xi}$

LS -  $\frac{cm}{xi} \tan \frac{vi}{fn} \times \frac{fn}{xi}$



LS-tan vrfn xln med  
 fms slaty slaty  
 cont. silt xln  
 Sh-bk carb  
 LS-tan vrfn xln  
 slaty  
 Siltstn - grey  
 LS-tan vrfn xln  
 cont. carb  
 Sh - grey  
 LS - cream vrfn xln  
 LS - lt grey clay vrfn xln  
 Ept cont grey  
 Sh - grey  
 LS - cream vrfn xln  
 cont - carb whit  
 LS - lt grey vrfn xln  
 slaty  
 LS - tan vrfn xln med xln  
 LS - cream vrfn xln slaty  
 LS - lt grey vrfn xln sl  
 xln  
 LS - tan med xln sl  
 spe. fm fr. vis. q  
 N.S.  
 Siltstn - grey qm  
 LS - cream vrfn xln  
 slaty  
 LS - grey tan fgn xln  
 LS - lt tan fm - med  
 xln ool  
 LS - lt grey vrfn xln  
 Ept - grey  
 Sh - grey blk  
 LS - tan vrfn xln  
 LS - lt tan vrfn xln  
 ool  
 LS - lt tan vrfn xln ool  
 Siltstn pe no odr  
 Sh - blk  
 LS - lt tan fgn xln slaty  
 LS - tan vrfn xln ool  
 slaty cont pe slaty  
 fr. blk. silt  
 Sh - siltstn - grey  
 LS - lt grey med xln  
 spe. fm spe. odr

DST #1  
 3909-3970  
 30-75-60-90  
 1st open - 3"  
 2nd open - 3"  
 Rec: 80  
 1 RC  
 200  
 FAP 23-51  
 FAP 58-104  
 ISIP 897  
 FSIP 876  
 IMP 1878  
 FHP 1877

slightly concave upward  
to top 50'

Sh - sltsh - qiy

LS - 11 qiy med xln ppl  
30' tan 30' fadr

Sh - blk carb

LS - 11 qiy vr fa xln

LS - qiy vr fa xln

LS - 11 tan 11 fa xln  
8' sec xln 10' w/ 5' SFO

Sh - blk

LS - 11 tan 11 qiy vr fa xln

LS - 11 tan vr fa xln  
5' 100'

LS - tan tan fa med xln  
5' sec xln 5' SFO  
7' 00'

Sh - qiy

Sltsln - qiy

LS - orn vr fa xln cdy

LS - 11 qiy vr fa xln

Sltsln - red qiy

LS - qiy vr fa xln

LS - tan 11 tan vr fa  
xln sltly red  
5' 00'

Sh - qiy

Sltsln - qia

LS - 11 qiy vr fa xln

Sh - red

LS - 11 qiy vr fa xln

LS - 11 qiy tan vr fa xln  
Chrt - orn qiy  
5' qiy sm 10' cdy  
3' qiy Ag 10' x  
10' odr - 3' 10' q

LS - 11 qiy vr fa xln

Sh - qiy

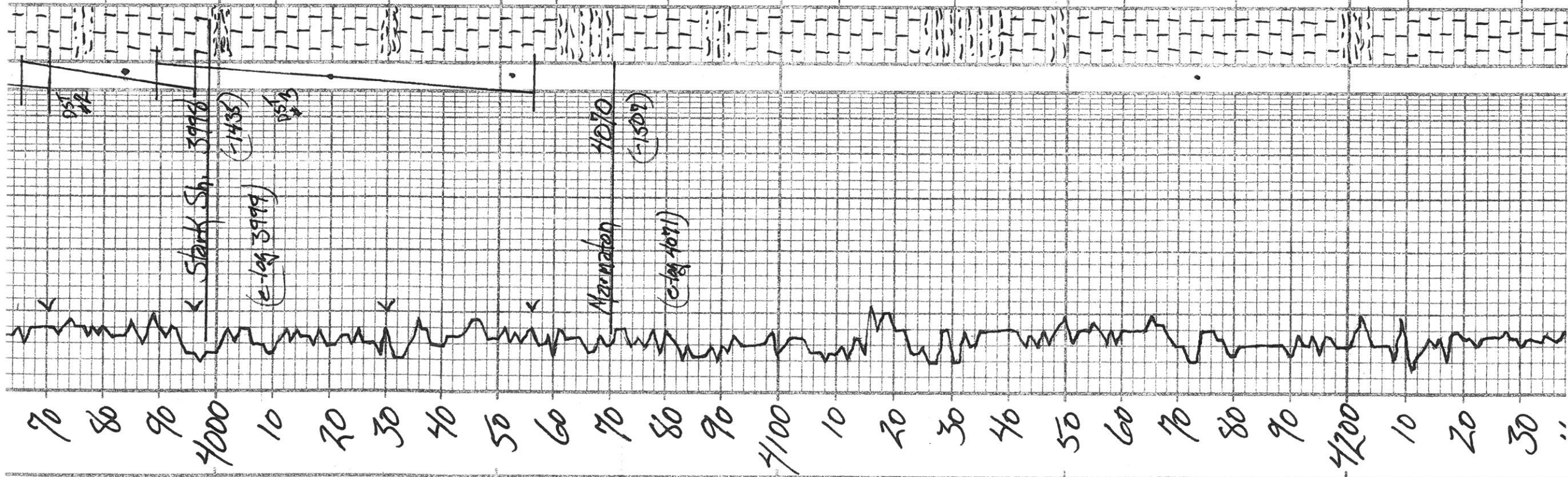
LS - qiy xln fa xln  
10' slt

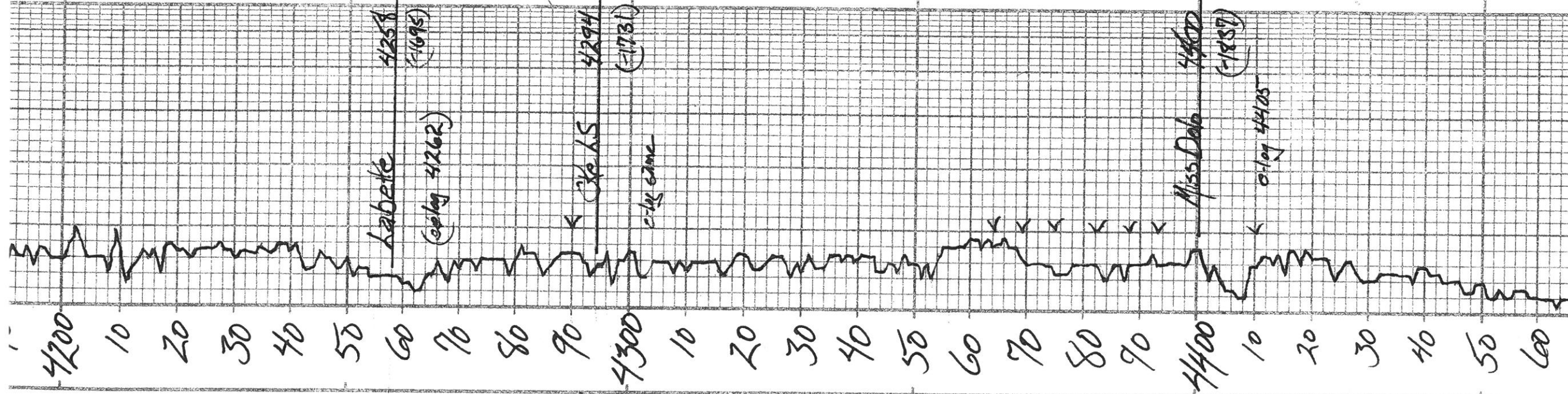
LS - qiy 11 tan vr fa  
xln

LS - qiy vr fa xln

DST #2  
3965-3996  
30"-60"-30"-30"  
1st open - 1/4"  
2nd open - N.B  
Rec: 5  
IFP 9-10  
FFP 10-9  
ISIP 827  
FSIP 76  
IMP 1898  
FHP 1888

DST #3  
3989-4046  
30"-60"-30"-30"  
1st open - 3/4"  
2nd open - N.C  
Rec: 5  
IFP 10-11  
FFP 12-13  
ISIP 472  
FSIP 181  
IMP 1910  
FHP 1898





Sh-grey

LS-grey v. fa xln  
silty

LS-grey v. fa xln  
xln

LS-grey v. fa xln

LS-grey v. fa xln  
silty

Sh-bk carb

LS-tan light v. fa xln  
ool. silt. sh. sand  
v. g. r. s. Fe

LS-crm. tan v. fa xln  
ool. silt. sh. sand  
v. g. r. s. Fe  
interool. sh.

Sh-bk

LS-crm. tan v. fa xln  
silt. pe. silty

LS-crm. tan v. fa xln

Sh-grey

LS-crm. tan v. fa xln  
silty

LS-tan v. med. xln  
silt. sh. v. g. r. s. Fe  
ool. silt. sh. sand  
v. g. r. s. Fe  
interool. sh.

LS-crm. v. fa xln

Sh-grey

Silt. sh. grey red  
chert - tan. grey

Sh-grey

SS-grey v. fa xln well sort  
v. g. r. s. Fe  
LS-tan v. fa xln

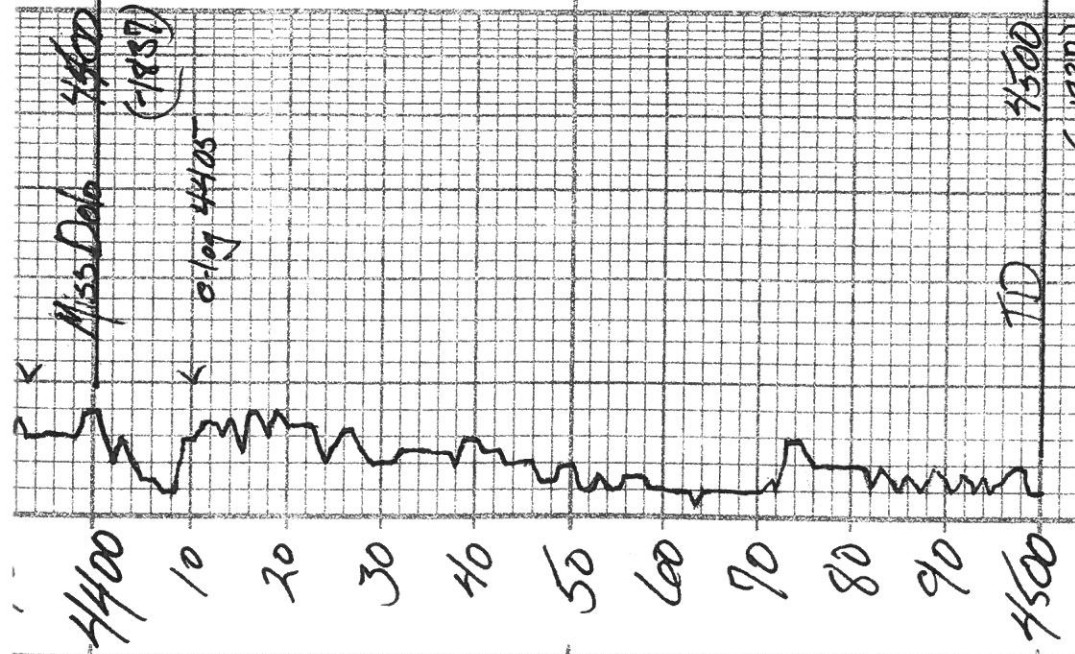
Dolo - tan v. fa xln  
silt. sh. v. g. r. s. Fe  
some tab. carb. N.S.

Dolo-grey v. fa xln

Sh-grey  
chert - white

Dolo - tan v. fa xln  
silt. sh. v. g. r. s. Fe

Chert - white



DEPTH	LITHOLOGY	SAMPLE DESCRIPTIONS	REMARKS
4400	AA		Dolo - thin to xln Some fossils Some fossils east N.S.
4405	AA		Dolo - thin to xln
4410	AA		Sh - grey Chert - white
4415	AA		Dolo - thin to xln Some fossils
4420	AA		Chert - white
4425	AA		Dolo - thin to xln
4430	AA		Dolo - thin to xln
4435	AA		Dolo - thin to xln
4440	AA		Dolo - thin to xln
4445	AA		Dolo - thin to xln
4450	AA		Dolo - thin to xln
4455	AA		Dolo - thin to xln
4460	AA		Dolo - thin to xln
4465	AA		Dolo - thin to xln
4470	AA		Dolo - thin to xln
4475	AA		Dolo - thin to xln
4480	AA		Dolo - thin to xln
4485	AA		Dolo - thin to xln
4490	AA		Dolo - thin to xln
4495	AA		Dolo - thin to xln
4500	AA		Dolo - thin to xln

COMPANY \_\_\_\_\_ ELEVATION: \_\_\_\_\_  
 LEASE \_\_\_\_\_  
 LOCATION \_\_\_\_\_ SEC \_\_\_\_\_ TWP \_\_\_\_\_ RNG \_\_\_\_\_  
 COUNTY \_\_\_\_\_ STATE \_\_\_\_\_