

COMPANY H+C Oil Operating, Inc.  
 WELL R. Labeiner # 7-3

FIELD Barry SE  
 LOCATION 1981 FwL + 1981 FwL

SEC. 7 TWP. 9S RGE. 18W  
 COUNTY Rooks  
 STATE Kansas

PRODUCTION Abuckle  
 ELEVATION KB 2043  
 DF 2038  
 GL 2038

OPERATOR H+C Oil Operating, Inc.  
 CONTRACTOR American Eagle, Log #3  
 COMM. 11-30-13  
 CASING RECORD  
 SURF: 9 3/4" @ 219' PROD: 5 1/2" @ 3419'  
 TOTAL DEPTH DRILLERS: 3474'  
 TOTAL DEPTH LOG: 3474'

FORMATION TOPS AND STRUCTURAL POSITION

FORMATION	SAMPLE TOP	ELECTRIC LOG TOP	SUB-SEA DRTM	STRUCTURAL POSITION
Top Anhydrite	1431	1431	+612	NA
Base Anhydrite	1411	1411	+572	NA
Topeka	2969	2971	-928	-8
Heegner	3180	3180	-1131	-16
Taranta	3201	3201	-1158	-16
LKC	3219	3220	-1177	-11
Arbuckle	3443	3444	-1421	-13
Arbuckle	3469	3461	-1424	-13

REFERENCE WELL FOR STRUCTURE Continental Oil Co.  
 J. Labeiner # 2 NE-SE-NW Sec. 7-9S-18W

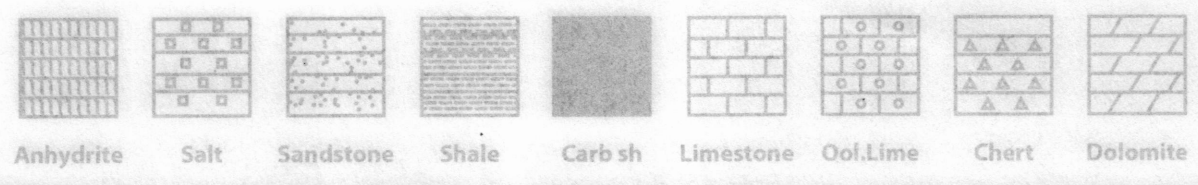
DRILL STEM TESTS

No.	Interval	IFP/Time	ISIP/Time	FFP/Time	FSIP/Time	HP-FHP	RECOVERY

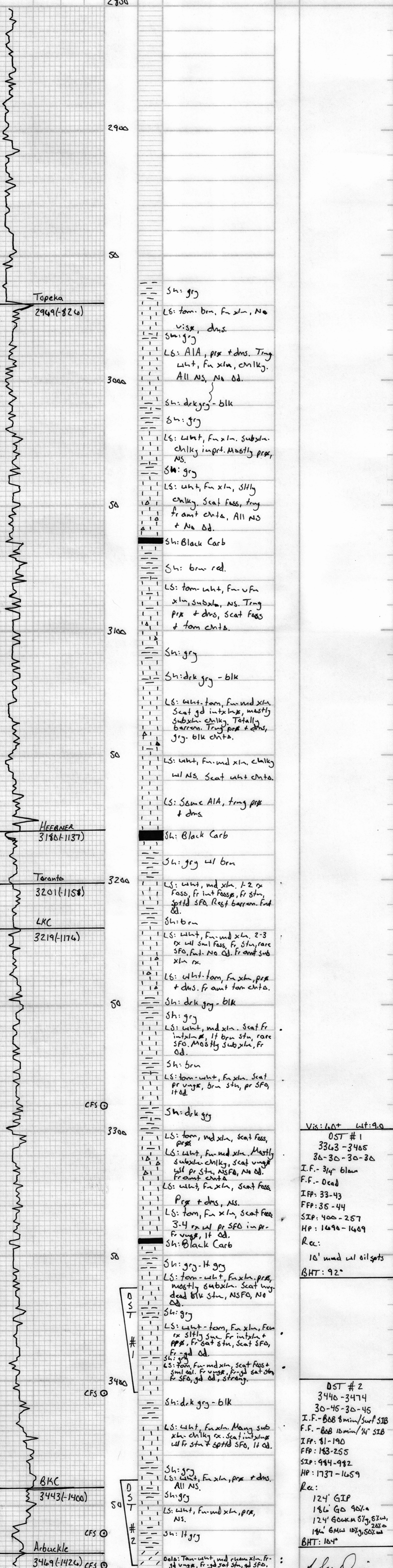
REMARKS AND RECOMMENDATIONS  
 Due to structural position, DST recovery, + casing for open hole completion of the Arbuckle.

Perforate:  
 LKC K: 3417-21  
 C: 3258-64

LEGEND



DRILLING TIME IN MINUTES PER FOOT  
 Rate of Penetration Decreases



Marc Downing