



DRILL STEM TEST REPORT

Prepared For: **Landmark Resources Inc.**

1616 S. Voss Rd. STE. 600
Houston TX. 77057

ATTN: Terry McLeod

Decker #3-9

9-17s-32w Scott,KS

Start Date: 2013.10.21 @ 10:28:00

End Date: 2013.10.21 @ 20:08:00

Job Ticket #: 55801 DST #: 1

Trilobite Testing, Inc
PO Box 362 Hays, KS 67601
ph: 785-625-4778 fax: 785-625-5620

Printed: 2013.10.28 @ 09:10:03

Landmark Resources Inc.

9-17s-32w Scott,KS

Decker #3-9

DST # 1

Marmaton & Altamont

2013.10.21



TRILOBITE TESTING, INC.

DRILL STEM TEST REPORT

Landmark Resources Inc.

9-17s-32w Scott,KS

1616 S. Voss Rd. STE. 600
Houston TX. 77057

Decker #3-9

Job Ticket: 55801

DST#: 1

ATTN: Terry McLeod

Test Start: 2013.10.21 @ 10:28:00

GENERAL INFORMATION:

Formation: **Marmaton & Altamont**

Deviated: No Whipstock: ft (KB)

Time Tool Opened: 14:39:30

Time Test Ended: 20:08:00

Test Type: Conventional Bottom Hole (Initial)

Tester: Royal Fisher

Unit No: 44

Interval: 4470.00 ft (KB) To 4550.00 ft (KB) (TVD)

Reference Elevations: 3134.00 ft (KB)

Total Depth: 4550.00 ft (KB) (TVD)

3129.00 ft (CF)

Hole Diameter: 7.88 inches Hole Condition: Good

KB to GR/CF: 5.00 ft

Serial #: 6669 Inside

Press @ Run Depth: 74.46 psig @ 4471.00 ft (KB)

Capacity: 8000.00 psig

Start Date: 2013.10.21

End Date:

2013.10.21

Last Calib.:

2013.10.21

Start Time: 10:28:05

End Time:

20:08:00

Time On Btm:

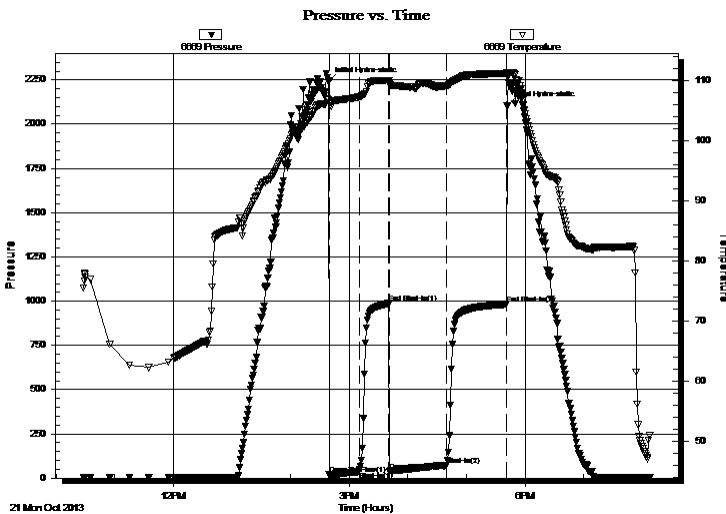
2013.10.21 @ 14:39:15

Time Off Btm:

2013.10.21 @ 17:41:45

TEST COMMENT: 30 - IF - surface blow built to 1/4" then died
30 - ISI - faint return
30 - FF - surface blow built to 10 1/2"
30 - FSI - surface blow in 9 min. built to 1/4"

PRESSURE SUMMARY



Time (Min.)	Pressure (psig)	Temp (deg F)	Annotation
0	2242.64	106.79	Initial Hydro-static
1	19.56	106.24	Open To Flow (1)
31	37.07	107.22	Shut-In(1)
62	987.38	109.96	End Shut-In(1)
63	37.73	109.41	Open To Flow (2)
121	74.46	109.12	Shut-In(2)
182	983.37	111.10	End Shut-In(2)
183	2103.23	111.24	Final Hydro-static

Recovery

Length (ft)	Description	Volume (bbl)
150.00	MCO - 90o - 5G - 5M	2.10
0.00	120' of gas	0.00

Gas Rates

	Choke (inches)	Pressure (psig)	Gas Rate (Mcf/d)



**TRILOBITE
TESTING, INC.**

DRILL STEM TEST REPORT

TOOL DIAGRAM

Landmark Resources Inc.

9-17s-32w Scott,KS

1616 S. Voss Rd. STE. 600
Houston TX. 77057

Decker #3-9

Job Ticket: 55801

DST#: 1

ATTN: Terry McLeod

Test Start: 2013.10.21 @ 10:28:00

Tool Information

Drill Pipe:	Length: 4474.00 ft	Diameter: 3.80 inches	Volume: 62.76 bbl	Tool Weight: 2500.00 lb
Heavy Wt. Pipe:	Length: 0.00 ft	Diameter: 0.00 inches	Volume: 0.00 bbl	Weight set on Packer: 25000.00 lb
Drill Collar:	Length: 0.00 ft	Diameter: 2.25 inches	Volume: 0.00 bbl	Weight to Pull Loose: 72000.00 lb
			Total Volume: 62.76 bbl	Tool Chased ft
Drill Pipe Above KB:	31.00 ft			String Weight: Initial 69000.00 lb
Depth to Top Packer:	4470.00 ft			Final 70000.00 lb
Depth to Bottom Packer:	ft			
Interval between Packers:	80.00 ft			
Tool Length:	107.00 ft			
Number of Packers:	2	Diameter: 6.75 inches		

Tool Comments:

Tool Description	Length (ft)	Serial No.	Position	Depth (ft)	Accum. Lengths
------------------	-------------	------------	----------	------------	----------------

Shut In Tool	5.00			4448.00	
Hydraulic tool jars	5.00			4453.00	
safety Joint	3.00			4458.00	
Packer	5.00			4461.00	
Packer	5.00			4466.00	27.00 Bottom Of Top Packer
Packer	4.00			4470.00	
Stubb	1.00			4471.00	
Recorder	0.00	6669	Inside	4471.00	
Recorder	0.00	8879	Outside	4471.00	
Perforations	11.00			4482.00	
Change Over Sub	1.00			4483.00	
Drill Pipe	63.00			4546.00	
Change Over Sub	1.00			4547.00	
Bullnose	3.00			4550.00	80.00 Bottom Packers & Anchor

Total Tool Length: 107.00



**TRILOBITE
TESTING, INC.**

DRILL STEM TEST REPORT

FLUID SUMMARY

Landmark Resources Inc.

9-17s-32w Scott,KS

1616 S. Voss Rd. STE. 600
Houston TX. 77057

Decker #3-9

Job Ticket: 55801

DST#: 1

ATTN: Terry McLeod

Test Start: 2013.10.21 @ 10:28:00

Mud and Cushion Information

Mud Type: Gel Chem

Cushion Type:

Oil API:

deg API

Mud Weight: 9.00 lb/gal

Cushion Length:

ft

Water Salinity:

ppm

Viscosity: 52.00 sec/qt

Cushion Volume:

bbbl

Water Loss: 10.78 in³

Gas Cushion Type:

Resistivity: 0.00 ohm.m

Gas Cushion Pressure:

psig

Salinity: 10000.00 ppm

Filter Cake: 2.00 inches

Recovery Information

Recovery Table

Length ft	Description	Volume bbl
150.00	MCO - 90o - 5G - 5M	2.104
0.00	120' of gas	0.000

Total Length: 150.00 ft Total Volume: 2.104 bbl

Num Fluid Samples: 0

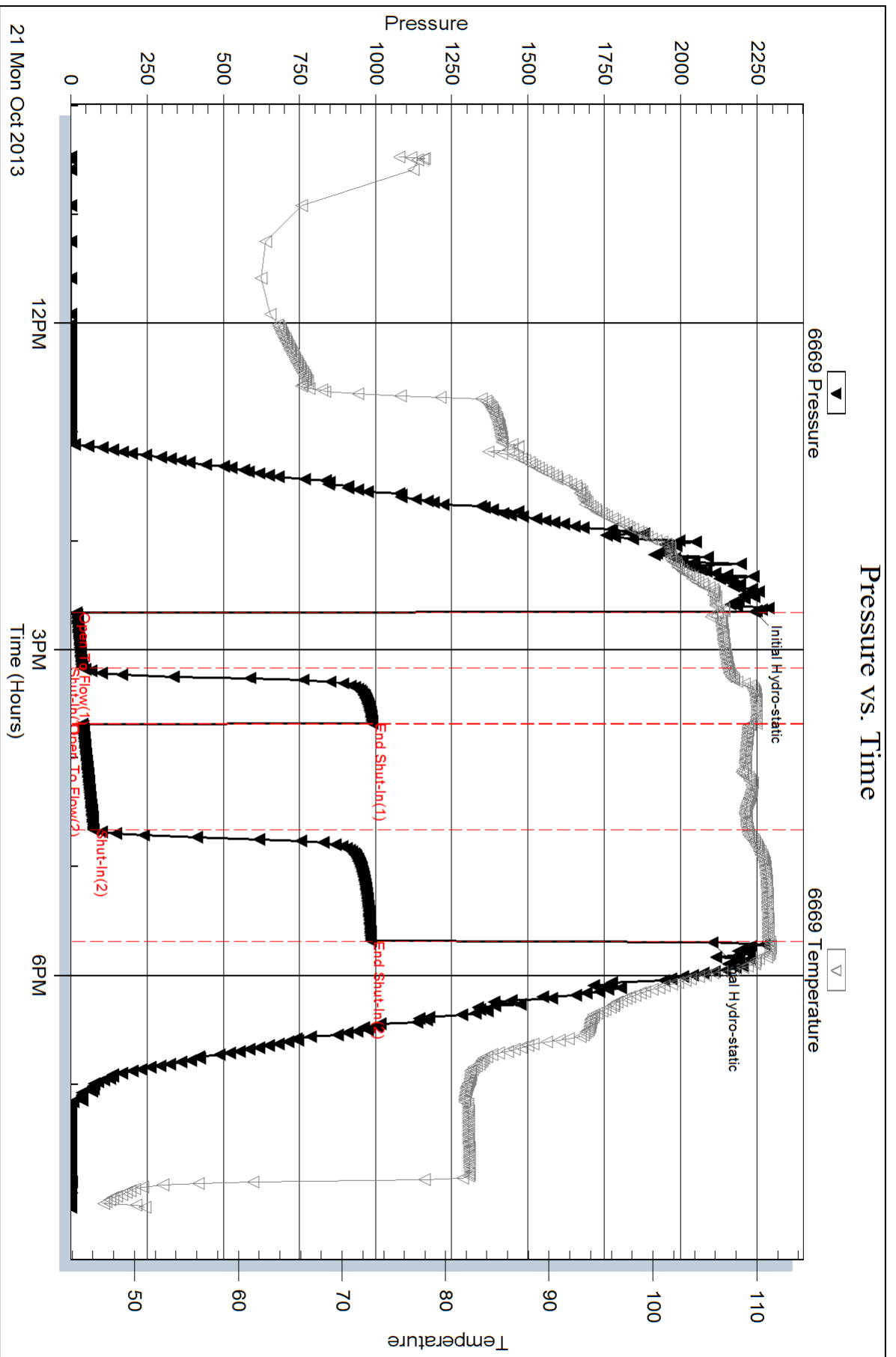
Num Gas Bombs: 0

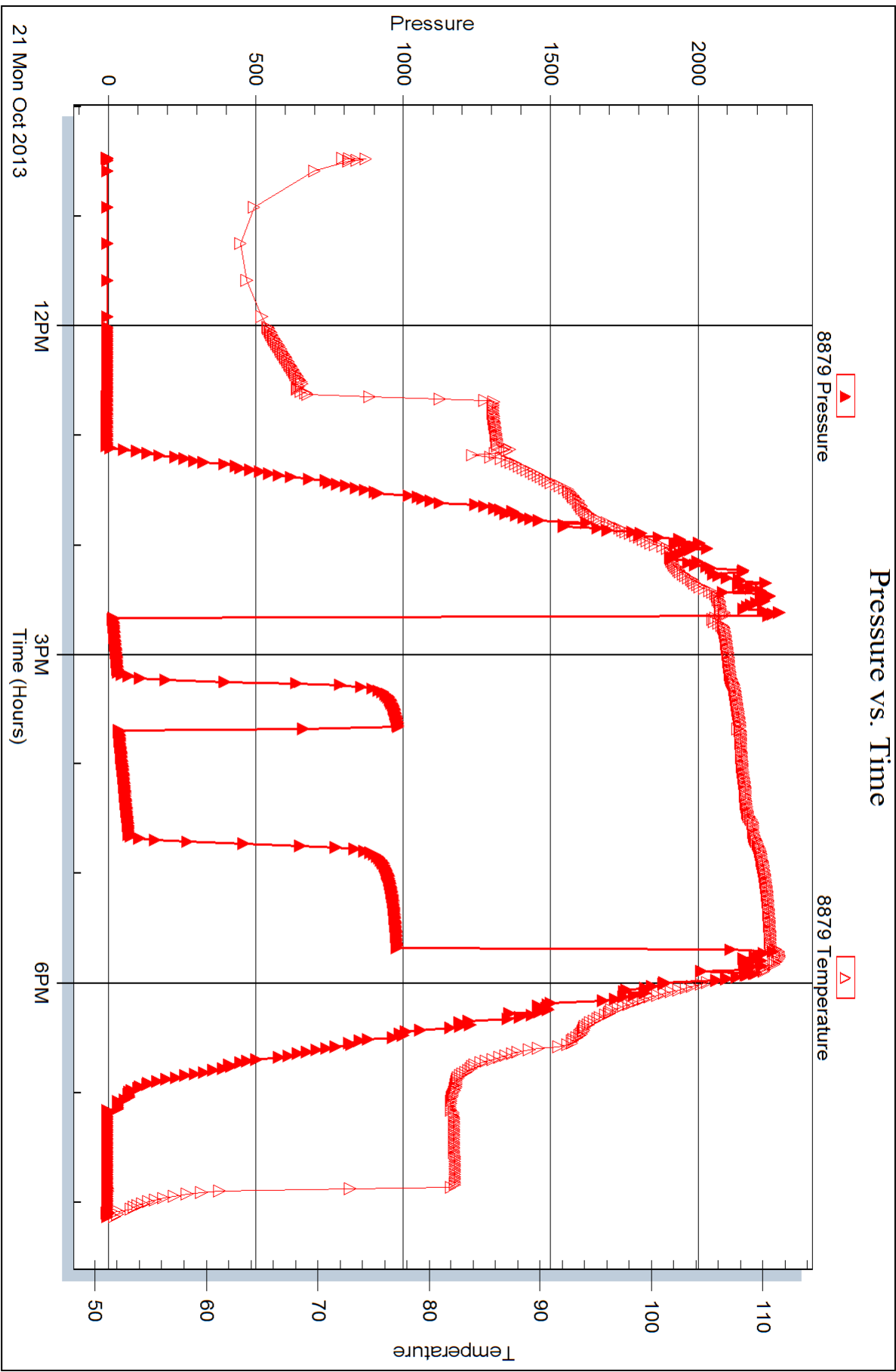
Serial #:

Laboratory Name:

Laboratory Location:

Recovery Comments:







DRILL STEM TEST REPORT

Prepared For: **Landmark Resources Inc.**

1616 S. Voss Rd. STE. 600
Houston TX. 77057

ATTN: Terry McLeod

Decker #3-9

9-17s-32w Scott,KS

Start Date: 2013.10.23 @ 05:18:15

End Date: 2013.10.23 @ 12:16:15

Job Ticket #: 54687 DST #: 2

Trilobite Testing, Inc

PO Box 362 Hays, KS 67601

ph: 785-625-4778 fax: 785-625-5620

Printed: 2013.10.28 @ 09:08:30



TRILOBITE TESTING, INC.

DRILL STEM TEST REPORT

Landmark Resources Inc.

9-17s-32w Scott,KS

1616 S. Voss Rd. STE. 600
Houston TX. 77057

Decker #3-9

Job Ticket: 54687

DST#: 2

ATTN: Terry McLeod

Test Start: 2013.10.23 @ 05:18:15

GENERAL INFORMATION:

Formation: **Johnson**

Deviated: No Whipstock: ft (KB)

Time Tool Opened: 08:03:45

Time Test Ended: 12:16:15

Test Type: Conventional Bottom Hole (Initial)

Tester: Mike Roberts

Unit No: 65

Interval: 4721.00 ft (KB) To 4787.00 ft (KB) (TVD)

Reference Elevations: 3134.00 ft (KB)

Total Depth: 4787.00 ft (KB) (TVD)

3129.00 ft (CF)

Hole Diameter: 7.88 inches Hole Condition: Fair

KB to GR/CF: 5.00 ft

Serial #: 8846

Inside

Press @ Run Depth: 33.97 psig @ 4722.00 ft (KB)

Capacity: 8000.00 psig

Start Date: 2013.10.23

End Date:

2013.10.23

Last Calib.:

2013.10.23

Start Time: 05:18:15

End Time:

12:16:15

Time On Btm:

2013.10.23 @ 08:03:30

Time Off Btm:

2013.10.23 @ 10:34:30

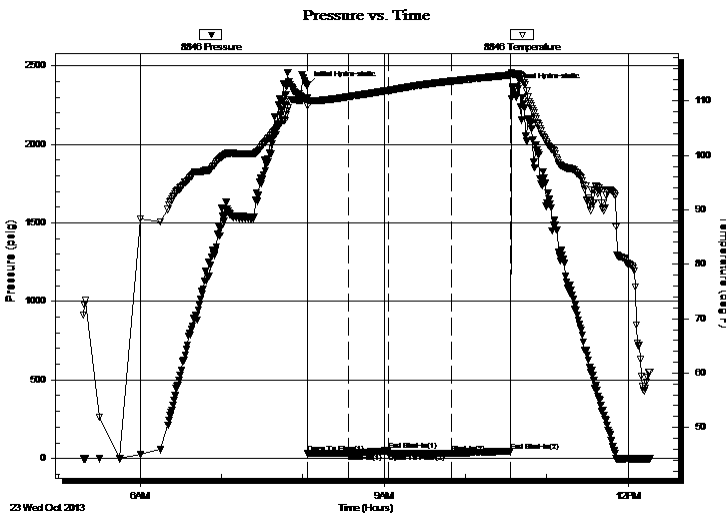
TEST COMMENT: IF: Built to weak surface blow and died in 15 min

IS: No return blow

FF: No blow

FS: No return blow

PRESSURE SUMMARY



Time (Min.)	Pressure (psig)	Temp (deg F)	Annotation
0	2372.81	110.50	Initial Hydro-static
1	31.59	109.17	Open To Flow (1)
31	34.05	110.76	Shut-In(1)
60	51.38	111.92	End Shut-In(1)
60	33.55	111.92	Open To Flow (2)
106	33.97	113.61	Shut-In(2)
150	45.48	114.77	End Shut-In(2)
151	2363.24	114.96	Final Hydro-static

Recovery

Gas Rates

Length (ft)	Description	Volume (bbl)
5.00	mud 100% m	0.07

	Choke (inches)	Pressure (psig)	Gas Rate (Mcf/d)



TRILOBITE TESTING, INC.

DRILL STEM TEST REPORT

Landmark Resources Inc.

9-17s-32w Scott,KS

1616 S. Voss Rd. STE. 600
Houston TX. 77057

Decker #3-9

Job Ticket: 54687

DST#: 2

ATTN: Terry McLeod

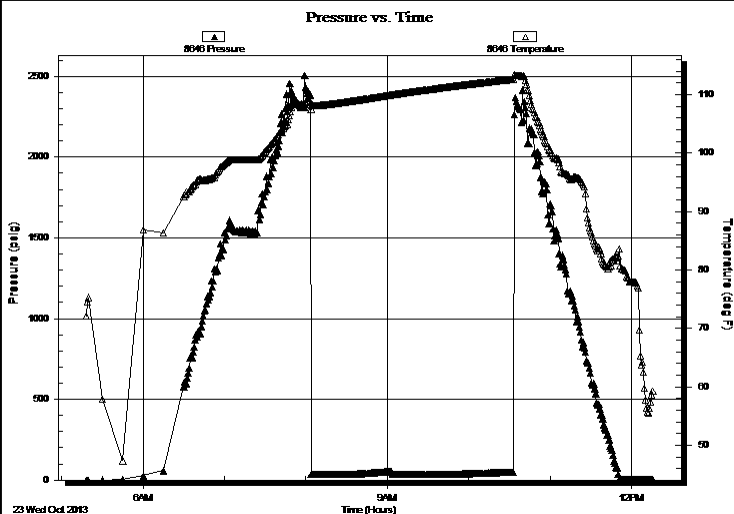
Test Start: 2013.10.23 @ 05:18:15

GENERAL INFORMATION:

Formation: **Johnson**
 Deviated: No Whipstock: ft (KB)
 Test Type: Conventional Bottom Hole (Initial)
 Time Tool Opened: 08:03:45
 Tester: Mike Roberts
 Time Test Ended: 12:16:15
 Unit No: 65
 Interval: **4721.00 ft (KB) To 4787.00 ft (KB) (TVD)**
 Reference Elevations: 3134.00 ft (KB)
 Total Depth: 4787.00 ft (KB) (TVD)
 3129.00 ft (CF)
 Hole Diameter: 7.88 inches
 Hole Condition: Fair
 KB to GR/CF: 5.00 ft

Serial #: 8646 Outside
 Press @ Run Depth: psig @ 4722.00 ft (KB) Capacity: 8000.00 psig
 Start Date: 2013.10.23 End Date: 2013.10.23 Last Calib.: 2013.10.23
 Start Time: 05:18:15 End Time: 12:16:15 Time On Btm:
 Time Off Btm:

TEST COMMENT: IF: Built to weak surface blow and died in 15 min
 IS: No return blow
 FF: No blow
 FS: No return blow



PRESSURE SUMMARY

Time (Min.)	Pressure (psig)	Temp (deg F)	Annotation

Recovery

Length (ft)	Description	Volume (bbl)
5.00	mud 100% m	0.07

Gas Rates

	Choke (inches)	Pressure (psig)	Gas Rate (Mcf/d)



**TRILOBITE
TESTING, INC.**

DRILL STEM TEST REPORT

TOOL DIAGRAM

Landmark Resources Inc.

9-17s-32w Scott,KS

1616 S. Voss Rd. STE. 600
Houston TX. 77057

Decker #3-9

Job Ticket: 54687

DST#: 2

ATTN: Terry McLeod

Test Start: 2013.10.23 @ 05:18:15

Tool Information

Drill Pipe:	Length: 4727.00 ft	Diameter: 3.80 inches	Volume: 66.31 bbl	Tool Weight: 1500.00 lb
Heavy Wt. Pipe:	Length: 0.00 ft	Diameter: 0.00 inches	Volume: 0.00 bbl	Weight set on Packer: 20000.00 lb
Drill Collar:	Length: 0.00 ft	Diameter: 0.00 inches	Volume: 0.00 bbl	Weight to Pull Loose: 90000.00 lb
			<u>Total Volume: 66.31 bbl</u>	Tool Chased 0.00 ft
Drill Pipe Above KB:	30.00 ft			String Weight: Initial 70000.00 lb
Depth to Top Packer:	4721.00 ft			Final 70000.00 lb
Depth to Bottom Packer:	ft			
Interval between Packers:	66.00 ft			
Tool Length:	90.00 ft			
Number of Packers:	2	Diameter: 6.75 inches		

Tool Comments:

Tool Description

Tool Description	Length (ft)	Serial No.	Position	Depth (ft)	Accum. Lengths
Change Over Sub	1.00			4698.00	
Shut In Tool	5.00			4703.00	
Hydraulic tool	5.00			4708.00	
Safety Joint	3.00			4711.00	
Packer	5.00			4716.00	24.00 Bottom Of Top Packer
Packer	5.00			4721.00	
Stubb	1.00			4722.00	
Recorder	0.00	8846	Inside	4722.00	
Recorder	0.00	8646	Outside	4722.00	
Perforations	2.00			4724.00	
Change Over Sub	1.00			4725.00	
Drill Pipe	32.00			4757.00	
Change Over Sub	1.00			4758.00	
Perforations	24.00			4782.00	
Bullnose	5.00			4787.00	66.00 Bottom Packers & Anchor

Total Tool Length: 90.00



**TRILOBITE
TESTING, INC.**

DRILL STEM TEST REPORT

FLUID SUMMARY

Landmark Resources Inc.

9-17s-32w Scott,KS

1616 S. Voss Rd. STE. 600
Houston TX. 77057

Decker #3-9

Job Ticket: 54687

DST#: 2

ATTN: Terry McLeod

Test Start: 2013.10.23 @ 05:18:15

Mud and Cushion Information

Mud Type: Gel Chem

Cushion Type:

Oil API:

0 deg API

Mud Weight: 9.00 lb/gal

Cushion Length:

ft

Water Salinity:

0 ppm

Viscosity: 51.00 sec/qt

Cushion Volume:

bbbl

Water Loss: 11.96 in³

Gas Cushion Type:

Resistivity: 0.00 ohm.m

Gas Cushion Pressure:

psig

Salinity: 10500.00 ppm

Filter Cake: 1.00 inches

Recovery Information

Recovery Table

Length ft	Description	Volume bbl
5.00	mud 100% m	0.070

Total Length: 5.00 ft Total Volume: 0.070 bbl

Num Fluid Samples: 0

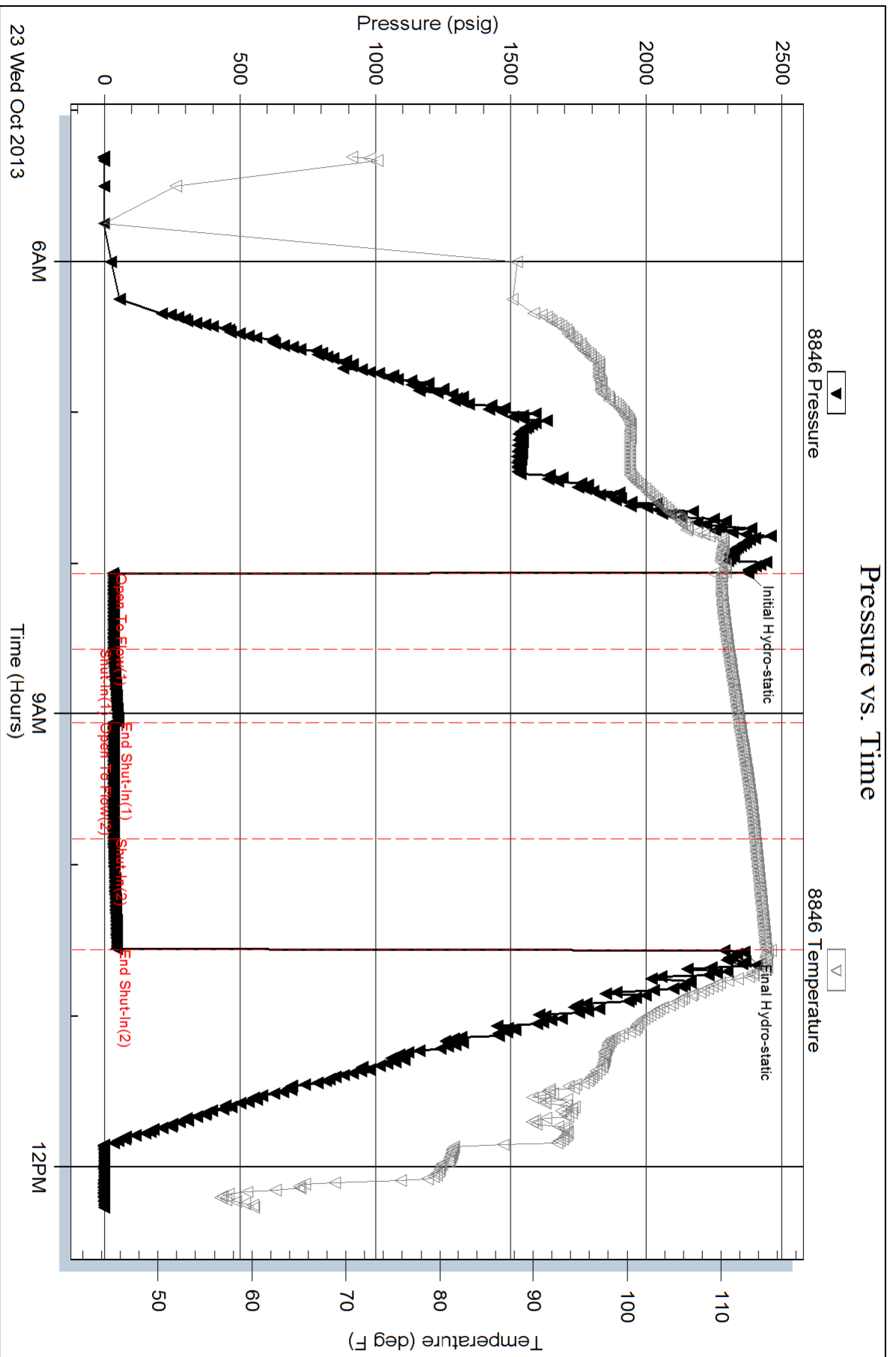
Num Gas Bombs: 0

Serial #:

Laboratory Name:

Laboratory Location:

Recovery Comments:



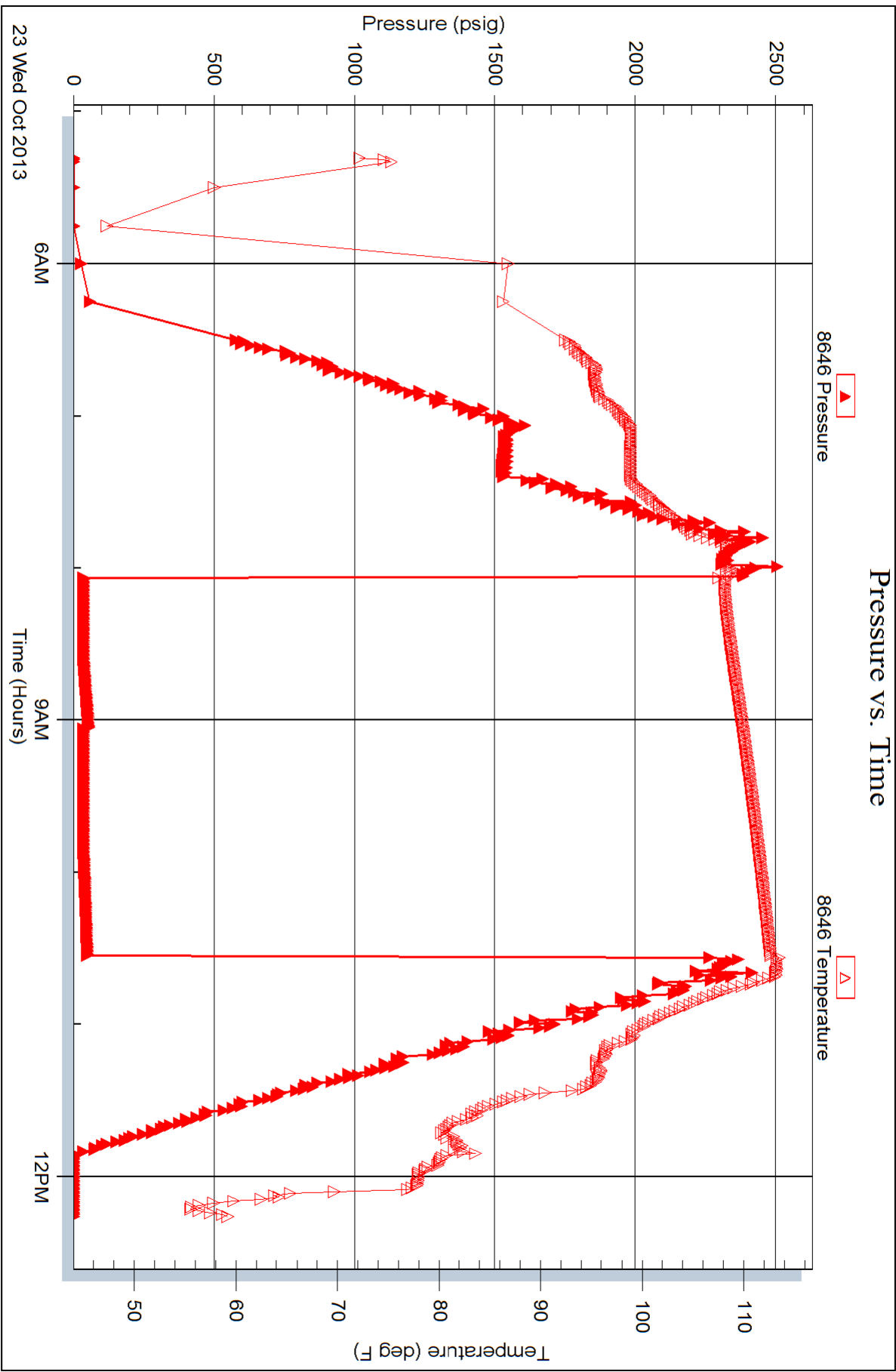
Serial #: 8646

Outside

Landmark Resources Inc.

Decker #3-9

DST Test Number: 2



Triobite Testing, Inc

Ref. No: 54687

Printed: 2013.10.28 @ 09:08:31



TRILOBITE TESTING INC.

1515 Commerce Parkway • Hays, Kansas 67601

Test Ticket

NO. **55801**

Well Name & No. Decker #3-9 Test No. 1 Date 10-21-13
 Company Landmark Resources Inc. Elevation 3131 KB 3629 GL
 Address 1616 S. Voss Rd. Ste. 600 Houston TX 77057
 Co. Rep / Geo. Terry McLead Rig LD#1
 Location: Sec. 9 Twp. 17s Rge. 32w Co. Scott State KS

Interval Tested 4470 - 4550 Zone Tested marmaton & Altamont
 Anchor Length 80' Drill Pipe Run 4474 Mud Wt. 9.0
 Top Packer Depth 4466 Drill Collars Run 0 Vis 52
 Bottom Packer Depth 4470 Wt. Pipe Run 0 WL 10.8
 Total Depth 4550 Chlorides 10,000 ppm System LCM trc

Blow Description IF - surface blow built to 4' then died
ISI - faint return
FF - surface blow built to 10 1/2"
FSI - surface blow in 9 min. built to 1/4"

Rec	Feet of	%gas	%oil	%water	%mud
<u>150'</u>	<u>MCO</u>	<u>5</u>	<u>90</u>	<u>5</u>	
	<u>120' of gas</u>	<u>100</u>			

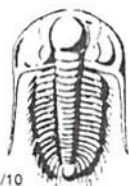
Rec Total 150' BHT 109°F Gravity 26 API RW @ _____ °F Chlorides _____ ppm

(A) Initial Hydrostatic 2242 Test 1250 T-On Location 9:00 am
 (B) First Initial Flow 19 Jars 250 T-Started 10:28 am
 (C) First Final Flow 37 Safety Joint 75 T-Open 2:40 pm
 (D) Initial Shut-In 987 Circ Sub _____ T-Pulled 4:40 pm 5:40 pm
 (E) Second Initial Flow 37 Hourly Standby _____ T-Out 8:10 pm
 (F) Second Final Flow 74 Mileage 52.70 Comments _____
 (G) Final Shut-In 983 Sampler _____
 (H) Final Hydrostatic 2103 Straddle _____ Ruined Shale Packer _____
 Shale Packer _____ Ruined Packer _____

Initial Open 30 Extra Packer _____ Extra Copies _____
 Initial Shut-In 30 Extra Recorder _____ Sub Total 0
 Final Flow ~~30~~ 60 Day Standby _____ Total 1627.70
 Final Shut-In ~~30~~ 60 Accessibility _____ MP/DST Disc't _____
 Sub Total 1627.70

Approved By _____ Our Representative [Signature]

Trilobite Testing Inc. shall not be liable for damaged of any kind of the property or personnel of the one for whom a test is made, or for any loss suffered or sustained, directly or indirectly, through the use of its equipment, or its statements or opinion concerning the results of any test, tools lost or damaged in the hole shall be paid for at cost by the party for whom the test is made.



TRILOBITE TESTING INC.

1515 Commerce Parkway • Hays, Kansas 67601

Test Ticket

NO. **54687**

Well Name & No. Decker 3-9 Test No. 2 Date 10-23-13
 Company Landmark Resources Inc. Elevation 3134 KB 3129 GL
 Address 1614 S. Voss Rd Ste 600 Houston TX 77057
 Co. Rep / Geo. Terry McLeod Rig LD
 Location: Sec. 9 Twp. 17 Rge. 34 Co. ~~Scott~~ Scott State KS

Interval Tested 4721-4787 Zone Tested Johnson
 Anchor Length 66 Drill Pipe Run 4727 Mud Wt. 9.1
 Top Packer Depth 4717 Drill Collars Run 0 Vis 51
 Bottom Packer Depth 4721 Wt. Pipe Run 0 WL 12.0
 Total Depth 4787 Chlorides 10500 ppm System LCM 1

Blow Description IF: Weak Surface Blow Died in 15 Min
IS: No Return Blow
FF: No Blow
FS: No Return Blow

Rec	Feet of	%gas	%oil	%water	%mud
<u>5</u>	<u>MUD</u>			<u>100</u>	
Rec	Feet of	%gas	%oil	%water	%mud
Rec	Feet of	%gas	%oil	%water	%mud
Rec	Feet of	%gas	%oil	%water	%mud
Rec	Feet of	%gas	%oil	%water	%mud

Rec Total 5 BHT _____ Gravity _____ API RW _____ @ _____ °F Chlorides _____ ppm

(A) Initial Hydrostatic 2372 Test 1250 T-On Location 03:40
 (B) First Initial Flow 31 Jars T-Started 05:18
 (C) First Final Flow 34 Safety Joint 75 T-Open 08:03
 (D) Initial Shut-In 51 Circ Sub NC T-Pulled 10:33
 (E) Second Initial Flow 33 Hourly Standby T-Out _____
 (F) Second Final Flow 33 Mileage 34 RT 52.70 Comments _____
 (G) Final Shut-In 45 Sampler _____
 (H) Final Hydrostatic 2363 Straddle _____ Ruined Shale Packer _____
 Shale Packer _____ Ruined Packer _____

Initial Open 30 Extra Packer _____ Extra Copies _____
 Initial Shut-In 30 Extra Recorder _____ Sub Total 0
 Final Flow 45 Day Standby _____ Total 1377.70
 Final Shut-In 45 Accessibility _____ MP/DST Disc't _____
 Sub Total 1377.70

Approved By Terry McLeod Our Representative Mike Rohrt

Trilobite Testing Inc. shall not be liable for damaged of any kind of the property or personnel of the one for whom a test is made, or for any loss suffered or sustained, directly or indirectly, through the use of its equipment, or its statements or opinion concerning the results of any test, tools lost or damaged in the hole shall be paid for at cost by the party for whom the test is made.