

OPERATOR

Company: BICKLE ENERGIES, LLC.
 Address: 2052 250TH AVE.
 HAYS, KS 67601

Contact Geologist:
 Contact Phone Nbr: 785-639-1681
 Well Name: DRECO #1
 Location: 825FSL 2062FEL 35-T16S-R13W API: 15-009-25906
 Pool: OIL WELL Field: TRAPP
 State: KANSAS Country: BARTON

Scale 1:240 Imperial

Well Name: DRECO #1
 Surface Location: 825FSL 2062FEL 35-T16S-R13W
 Bottom Location:
 API: 15-009-25906
 License Number:
 Spud Date: 11/11/2013 Time: 12:00 AM
 Region: CENTRAL KANSAS
 Drilling Completed: 11/16/2013 Time: 12:00 AM
 Surface Coordinates:
 Bottom Hole Coordinates:
 Ground Elevation: 1879.00ft
 K.B. Elevation: 1884.00ft
 Logged Interval: 2500.00ft To: 3400.00ft
 Total Depth: 3400.00ft
 Formation: ARBUCKLE
 Drilling Fluid Type:

ELEVATIONS

K.B. Elevation: 1884.00ft Ground Elevation: 1879.00ft
 K.B. to Ground: 5.00ft

TOTAL DEPTH

Measurement Type:	Measurement Depth:	TVD:
RTD	3400.00	0.00
LTD	3400.00	0.00

CASING SUMMARY

	Surface	Intermediate	Main		
Bit Size	12.25 in		7.88 in		
Hole Size	12.25 in		7.88 in		
	Size	Set At	Type	# of Joints	Drilled Out At
Surf Casing	8.625 in	767 ft			
Int Casing					
Prod Casing	5.50 in	3398 ft	15.5#		

CASING SEQUENCE

Type	Hole Size	Casing Size	At
SURFACE	12.25 in	8.63	767.00 ft
PRODUCTION	7.88 in	5.50	3398.00 ft

OPEN HOLE LOGS

Logging Company: GEMINI WIRELINE
 Logging Engineer: GUS PFANENSTIEL
 Truck #:
 Logging Date: 11/16/2013 Time Spent:
 # Logs Run: 3 # Logs Run Successful: 3

LOGS RUN

Tool	Logged Interval	Logged Interval	Hours	Remarks	Run #
DL	750.00ft	3400.00ft	0.00		0

DI	750.00ft	3400.00ft	0.00	0
CND	2800.00ft	3400.00ft	0.00	0
MICRO	2800.00ft	3400.00ft	0.00	0

LOGGING OPERATION SUMMARY

Date	From	To	Description Of Operation
11/22/2013	750.00ft	3400.00ft	

LOGGED BY

Company:
Address:

Phone Nbr: 316-265-2228 / 316-250-5655
Logged By: Geologists

Name: LARRY FRIEND/ JEFF BURK

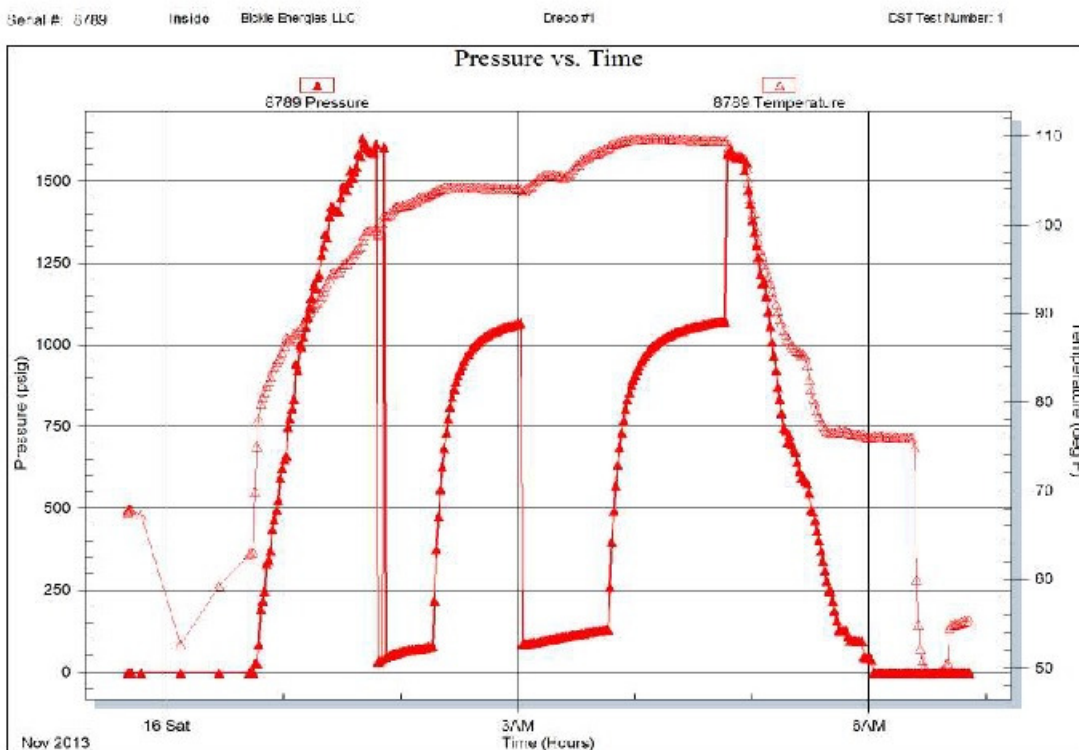
FORMATION TOPS

FORMATION TOPS	SAMPLE	LOG	COMPARISON WELL: ALPINE, 1 LANG NW SW SE 35-16-13W	
ANHYDRITE	772 (+1112)	773 (+1111)	NA	
TARKIO	2523 (-639)	2523 (-639)	NA	
TOPEKA	2703 (-819)	2704 (-820)	+1	
HEEBNER SHALE	2987 (-1103)	2988 (-1104)	+4	
BROWN LIME	3075 (-1191)	3076 (-1192)	+3	
LANSING	3091 (-1207)	3092 (-1208)	+1	
H ZONE POROSITY	3215 (-1331)	3216 (-1332)	+4	
BKC	3317 (-1433)	3318 (-1434)	+1	
ARBUCKLE	3327 (-1443)	3321 (-1437)	+4	
QUARTZITE	3368 (-1484)	3370 (-1486)	NA	

DRILLSTEM TESTS

No	Interval	Formation
1	3290.00 - 3343.00	ARBUCKLE

DST #1 CHART, ARBUCKLE TEST: 3290-3343



ROCK TYPES

- Dolsec
- Lmst fw7>
- Shblk
- Igneacidic
- Shgy

ACCESSORIES

MINERAL

- ▲ Chert, dark
- Sandy
- Silty

FOSSIL

- ◊ Oolites

STRINGER

- ≡ Shale

OTHER SYMBOLS

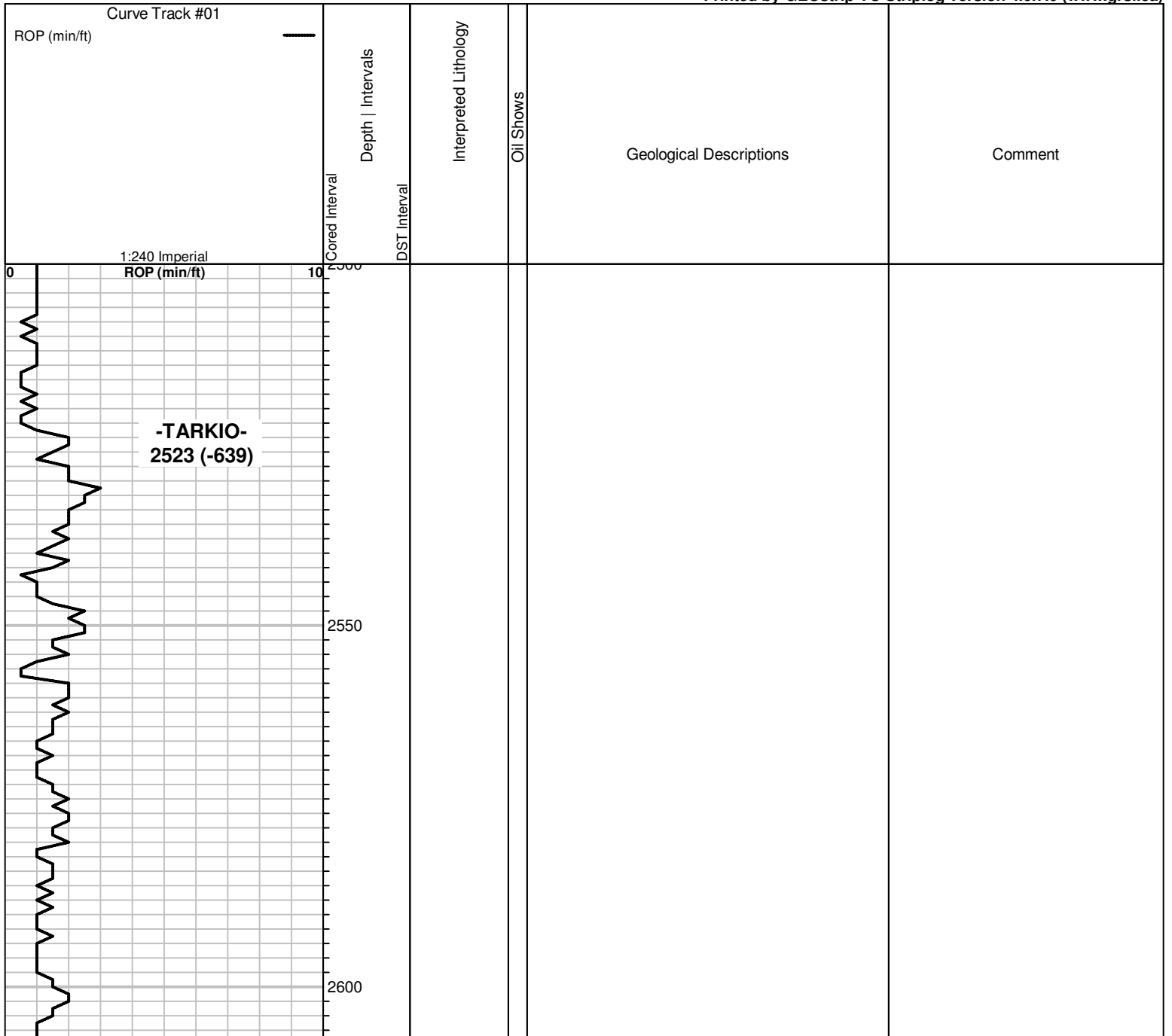
OIL SHOWS

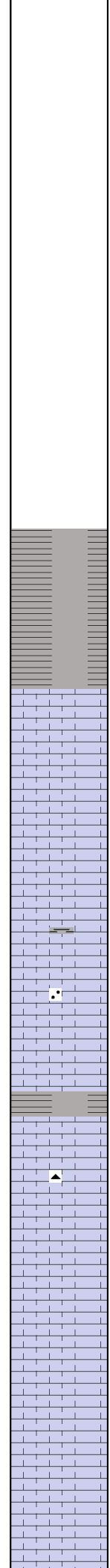
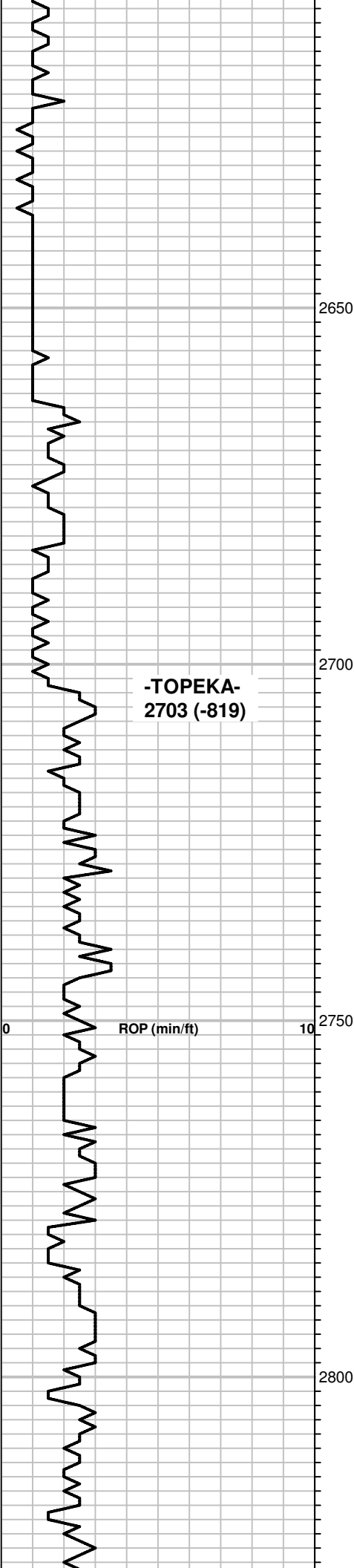
- Even Stn
- Spotted Stn 50 - 75 %
- Spotted Stn 25 - 50 %
- Spotted Stn 1 - 25 %
- Questionable Stn
- D Dead Oil Stn
- Fluorescence

INTERVALS

- Core
- DST

Printed by GEOstrip VC Striplog version 4.0.7.0 (www.grsi.ca)





SAMPLES MIXED

20: SHALE GRY.

LS, BRN, FXLN, FOSS, PR. VIS. POROSITY; NS
NO FLUOR.

40: LS, BRN, FXLN, DSE; NS

60: LS, GRY-BRN, VF-FXLN, SOME SLI. SHLY,
SLI. SILTY, PR. VIS. POROSITY; NS

70: LS, AS ABV; TR. SST, FN GRND, V. LMY;
NS

80: SHALE, GRY & LS, TAN, FXLN, FOSS, PR.
XLN. POROSITY; NS

90: LS, BRN, VF-FXLN, DSE TO PR. XLN. POR;
NS

100: LS, TAN-BRN, VF-FXLN, PR. POR; TR. LS,
SLI. FOSS, SOFT, SLI. CHLKY; TR. CHERT.
GRY, SHP; NS

10: LS, AS ABV; TR. LS, FOSS (FUSILINIDS),
PR. VIS. POR; NS, NO FLUOR.

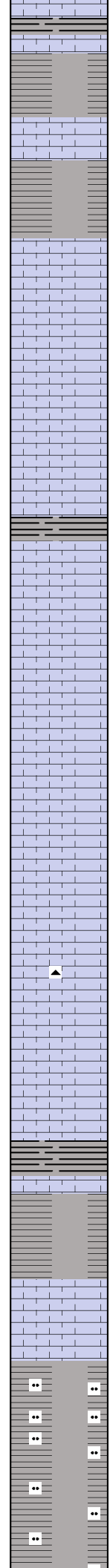
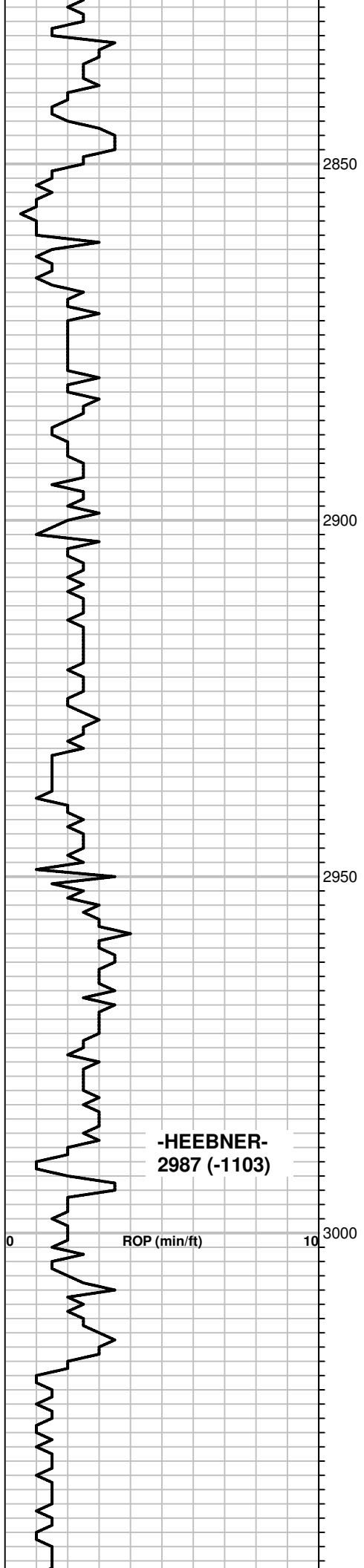
20: LS, BRN, FXLN, V. FOSS, PR- TR. FR. XLN.
POR; NS

30: LS, BRN, VFXLN, DSE; SHALE GRY, GRN;
TR. V. LMY. SST, PR. POR; NS

40: LS, TAN-BRN, FXLN, FOSS, SLI. CALCITIC,
SLI. CHLKY, PR- FR. POR; NS

MUD @ 2708:
WT: 9.1
VIS: 54
FILTRATE: 7.2
CHLOR: 4000
LCM: NA

START 10 FT. SAMPLES @ 2760'



50: SHALE, GRY, TR. BLK; LS, AS ABV, SLI. CHLKY; NS

60: TR. SHALE, GRY; LS, TAN-BRN, FXLN, SLI. FOSS, SLI. CALCITIC, PR -FR. XLN. POR; NS

70: LS, TAN - MOTTLED GRY, FXLN, SLI. DETRITAL; SHALE, GRY; NS

80: LS, TAN, FXLN, SMOOTH, PR - FR. XLN. POR; SHALE, GRY; NS

90: LS, BRN, FXLN, SLI. MOTTLED, PR. XLN. POR; NS

100: LS, AS ABV TO LS, CRM-BRN, SOFT, SLI. CHLKY; NS

10: LS, BRN, VF-FXLN, SLI. MOTTLED GRY, PR. POR. TO TR. LS, CALCITIC WITH PR - FR. XLN. POR; NS

20: SHALE, BLK, GRY, RED; LS, BRN, VF-FXLN, TR. MOTTLED, TR. V. FOSS, MOSTLY PR. TO TR. FR. XLN. POR; NS

30: LS, BRN, FXLN, SLI. MOTT, SLI. FOSS, PR. POR. TO SOME WEATHERED, SLI. CHLKY; NS

40: LS, BRN, FXLN, SLI. FOSS, SLI. CALCITIC, MOSTLY PR. XLN. POR, SLI. ODOR.

LS, CRM, MOSTLY CHLKY, SOFT TO SOME BRN, FXLN W/ PR. XLN. POR.; FR SHOW GAS BUBBS, NO FO, SPTY BRN. SAT. STN, GD. FLUSH CUT, SLI. ODOR.

60: LS, CRM, MOSTLY CHLKY TO FXLN, SOFT; NS

70: LS, TAN-BRN, VF-FXLN, SLI. FOSS, PR. POR; SOME SHALE GRY & GRN; NS

80: LS, AS ABV, SLI. MOTTLED, SLI. FOSS, SOME SLI. CHLKY; TR. CHERT, GRY; SHALE; NS

90: LS, TAN-BRN, SLI. MOTTLED

100: LS, AS ABV; INC. SHALE, GRY & TR. BLK. SHALE, CARBONACEOUS.

10: SHALE, AS ABV; LS, TAN, VFXLN, DSE TO SLI. CHLKY; NS

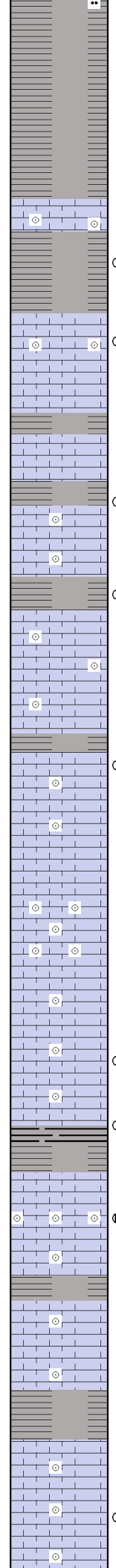
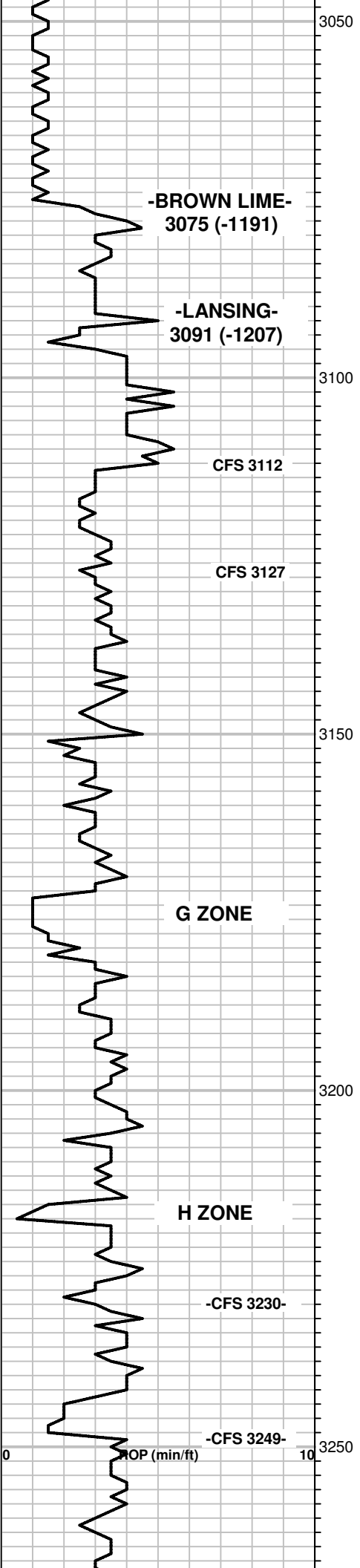
20, 30 & 40: LS, CRM-TAN, FXLN, PR-FR. XLN. POR, SOME SLI. CHLKY; NS

50: GRY, MICA. SILTSTONE, TITE.

60: SOFT, GRY, SHLY SILTSTN TO SILTY SHALE.

70: GRY, MICA. SILTSTN, SHLY, LAMINATED.

RAN SHORT TRIP @ 3230'. GOT STUCK @ 2937 FOR 10 HRS. APPAR. WALL CAKE BUILDUP ON A DEPLETED ZONE. SPOTTED 40 BLS OIL - CAME LOOSE.



80: MOSTLY GRY SHALE; SOME SILTSTN AS ABV.

90: SHALE, GRY & LS, BRN, FOSS, DSE.

100: TR. LS, BRN, V. OOLITIC W/ PR. OOLIC. POR, SSFO, SG, PR. SPTY STN, LOOKS TITE, NO ODOR

10: TR. LS, V. OOLITIC, W/ PR. TR. SPTY OOLIC. POR, S-FSFO&G, SPTY BRN STN, SLI - FR. ODOR.

LS, TAN-BRN, VF-FXLN, PR. VIS. POR; NS

TR. LS, TAN, V. OOLITIC, SLI. CALCITIC, PR - TR. GD. OOLIC. POR, SSFO&G, SCAT. SPTY. STN, SLI. ODOR.

40: TR. LS, CRM, OOLITIC, SLI. CHLKY, FR. XLN. POR, TR. STN, SLI. ODOR, NFO

50: TR. LS, TAN, FXLN, SLI. OOLITIC, PR. XLN. POR; NS

60: SHALE, GRY, GRN; LS, BRN, VF-FXLN, SOME OOLITIC, PR. POR; NS

70: LS, CRM-TAN, V. OOLITIC, PR. TR. OOLIC. POR, SPTY. FLUOR, NO FLUSH CUT.

80: LS, CRM-TAN, FXLN, SOME OOLITIC, PR-FR. XLN POR; NS

90: LS, TAN, V. OOLITIC W/ PR. OOLIC. POR, NS, NO FLUOR.

100: LS, TAN-BRN, VF-FXLN; AND SM. AMT. OOLITIC LS, AS ABV; NS

10: TR. LS, OOLITIC W/ PR - GD. OOLIC. POR, 1 PC. W/ TR. BLK. SPTY. STN.

20: SHALE, GRY & BLK; TR. LS AS ABV. W/ FR - GD OOLIC. POR, 1 PC. FSFO.

LS, GD. OOLIC. POR, F-GSFO&G, FR. - TR. GD. SPTY DK. SAT. STN, FR. ODOR.

TR. LS, PR - FR. OOLIC. POR, SOME SLI. CHLKY; NS.

LS, BRN, V. FOSS / OOLITIC, PR. VIS. POR; NS

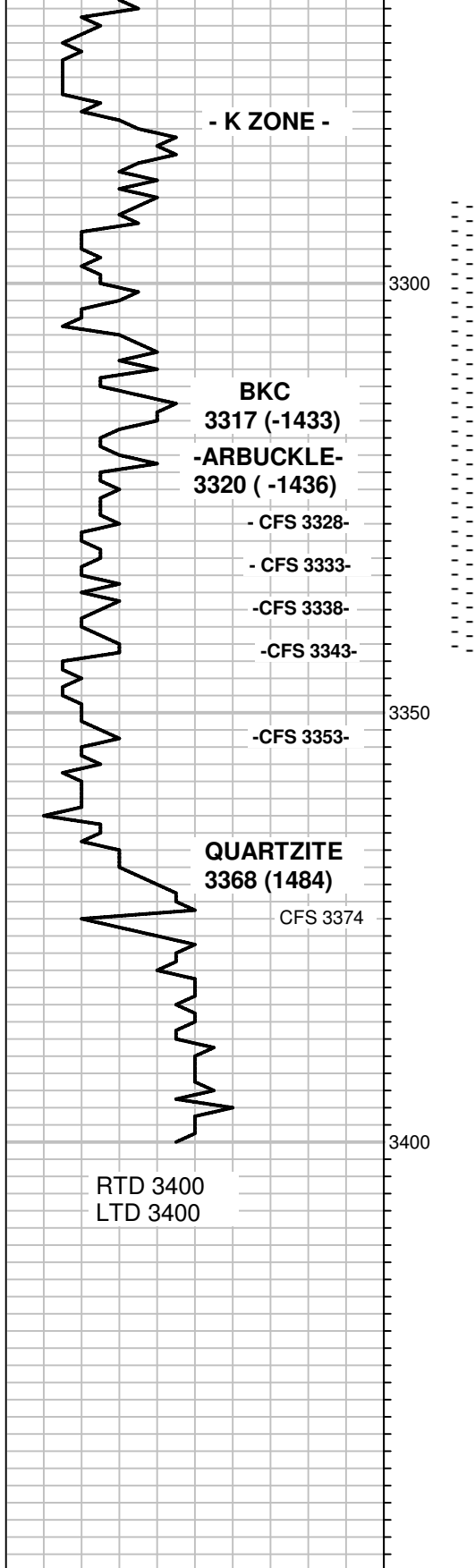
LS, TAN, V. OOLITIC, PR - FR. XLN. POR & SHALE GRY; NS

60: SHALE, BLK & V. COLORED; LS, AS ABV; NS

70: LS, TAN-BRN, OOL. / FOSS, PR - TR. FR. XLN, 1 PC. PR. LIVE STN & SSG, NFO, SOME IS SLI. CHLKY; NO ODOR.

"H" ZONE HAD GOOD SHOW AND CAME IN 4 FT. HIGH TO ALPINE WELL, OFFSET TO NW. CONSIDERED TESTING BUT FOUND VERY LOW PRESSURES ON DSTS ON OLDER WELLS NEARBY. ONLY 43# SIP ON #2 REXROAT, SW SE SW, SAME SECTION. MAY WANT TO PERF BEFORE ABANDONMENT?? RAN SHORT TRIP @ 3230. GOT BIT STUCK @ 2937. SEE NOTE ABOVE.

MUD @ 3234:
 WT: 8.9
 VIS: 56
 FILTRATE: 6.4
 CHLOR: 4000
 LCM: TR.



80: SHALE, GRY, BLK, GRN, SOME SOFT, STICKY; TR. PYRITE.

90: LS, TAN-BRN, OOLITIC / FOSS, PR. - TR. FR. XLN. POR; NS

100: LS, TAN-BRN, SLI. OOL. / FOSS, PR - TR. FR. XLN. POR; NS

10: LS, AS ABV. & SHALE, GRY; NS

20 & 28: LS, TAN-BRN, VF-FXLN, V. SLI. OOL. / FOSS, PR. - TR. FR. XLN. POR; NS

28: 30" CIRC: LS, TAN-BRN, FXLN, SLI. OOLITIC / FOSS, PR. - FR. XLN. POR; SHALE, GRY; NS

28: 40" CIRC: V. SLI. TR. DOL. TAN, MXLN, PR. VIS. POR AND AS ABV; NS

33: DOL. TAN, M-CXLN, PR - TR. GD. XLN. POR, TR. CALCITIC, TR. SDY, CP. PCS. W/ SSFO&G & LT. EVEN STN, TR. QTZ; SLI. ODOR

38: DOL, AS ABV W/ PR- SM. AMT FR. XLN POR, SSFO, PR. SPTY STN, SLI- FR. ODOR

43: DOL, TAN, CXLN, PR - FR. XLN & TR. VUG. POR, LT. W/ FSFO & PR -FR. SPTY-EVEN LT. BRN. STN, LT. SPTY-EVEN FLUOR; FEW QTZ GRNS; FR. ODOR (BEST LOOK. DOL SO FAR)

53: DOL, CRM-BUFF, M-CXLN, FR. RHOMBIC XLN POR, SFO&G, LT. FLOR & STN; GD ODOR

DOL, TAN, MXLN, FSFO; FEW QTZ GRNS

QTZ, ABT, CLR, MANY W/ PYRITE & OTHER INCLUSIONS, PR - NO FLUOR; V. WK. ODOR

QTZITE, MOST CLR SHARDS OF QTZ; TR. DOL, POSS V. SLI. SO IN 1 PC, NO FLUOR; WK ODOR.

QTZITE, MOSTLY QTZ, FEW PK FELDSPAR, V. DNS, FRAC, PR. POR, ABT. INCLUS OF PYR & DK. MINERALS; NS

QTZITE, CLR QTZ, MOST W/ DK MINERAL INCLUSIONS, PR TO NO VIS. POR; NS

DST #1: 3290-3343
TIMES: 30-45-45-60
IF: NO BLOW, FLUSHED AT 5", THEN BOB IN 24"
FF: BOB IN 25"
NO RETURN BLOW
REC: 254' TOTAL FLUID:
92' CO (37 GRAV),
45' OCM (10%O, 90%MD),
117' SW&MCO (50%O, 10% W, 40%MD)
IFP: 33-81#
FFP: 89-132#
SIP: 1068-1074#
BHT: 109 F.
SEE CHART ABOVE

PIPE STRAP @ 3343:
 2.31 FT. LONG TO BOARD
 WAS WINDY.

MUD @ 3343:
 WT: 8.8
 VIS: 55
 FILTRATE: 7.2
 CHLOR: 5000
 LCM: 2#

DEVIATION SURVEY AT 3343:
 1 DEGREE

GEOLOGIST JEFF BURK
 TOOK OVER WELL @ 3343'.